

TREES



(A) *Quercus ilex*, Standard, RG/CG, 30-35cm girth, 6-7m height, min 400cm width, clear stem of 2.5m

(B) *Acer palmatum* 'Osakazuki', Multi-stemmed, RB/CG, 300-350cm height, min 250cm width

(C) *Amelanchier lamarckii*, Multi-stemmed, RB/CG, 300cm height, min 150cm width

TREES

Tree planting consists of three elements:

A grove of trees on the eastern boundary that form an under-story to the mature trees from the adjacent footpath overhanging the garden.



(B) Grove of multi-stem Maples



(C) Multi-stemmed Amelanchier lamarckii

A single semi-mature tree is planted in the centre of the garden providing evergreen screening towards the house on the south of the garden.

At the rear of central axis of the garden is an evergreen oak. It is near a mature and imposing copper beech and therefore needs to be able to compete and tolerate the shade and drought caused by this large specimen.



Acorns provide forage



(A) Evergreen Oak



Evergreen Oak in the nursery

A single multi stemmed maple will be planted near the top of the steps leading to the basement. It will help to bridge the gap between the sunken courtyard garden and the groundfloor level planting.

EVERGREEN HEDGES AND PLANTING



EVERGREEN HEDGES AND PLANTING

The garden will be planted with a mixture of evergreen plants. Clipped yew hedges are used as screens and barriers and as a continuation of the architectural language. Evergreens will create all year round interest in the garden. An evergreen screen will provide privacy from the neighbouring garden.



(8) Evergreen native yew hedge to garden terrace.



(10) Deciduous azaleas



(10) Sarcococca confusa, evergreen groundcover plan with incredible winter blossom period.

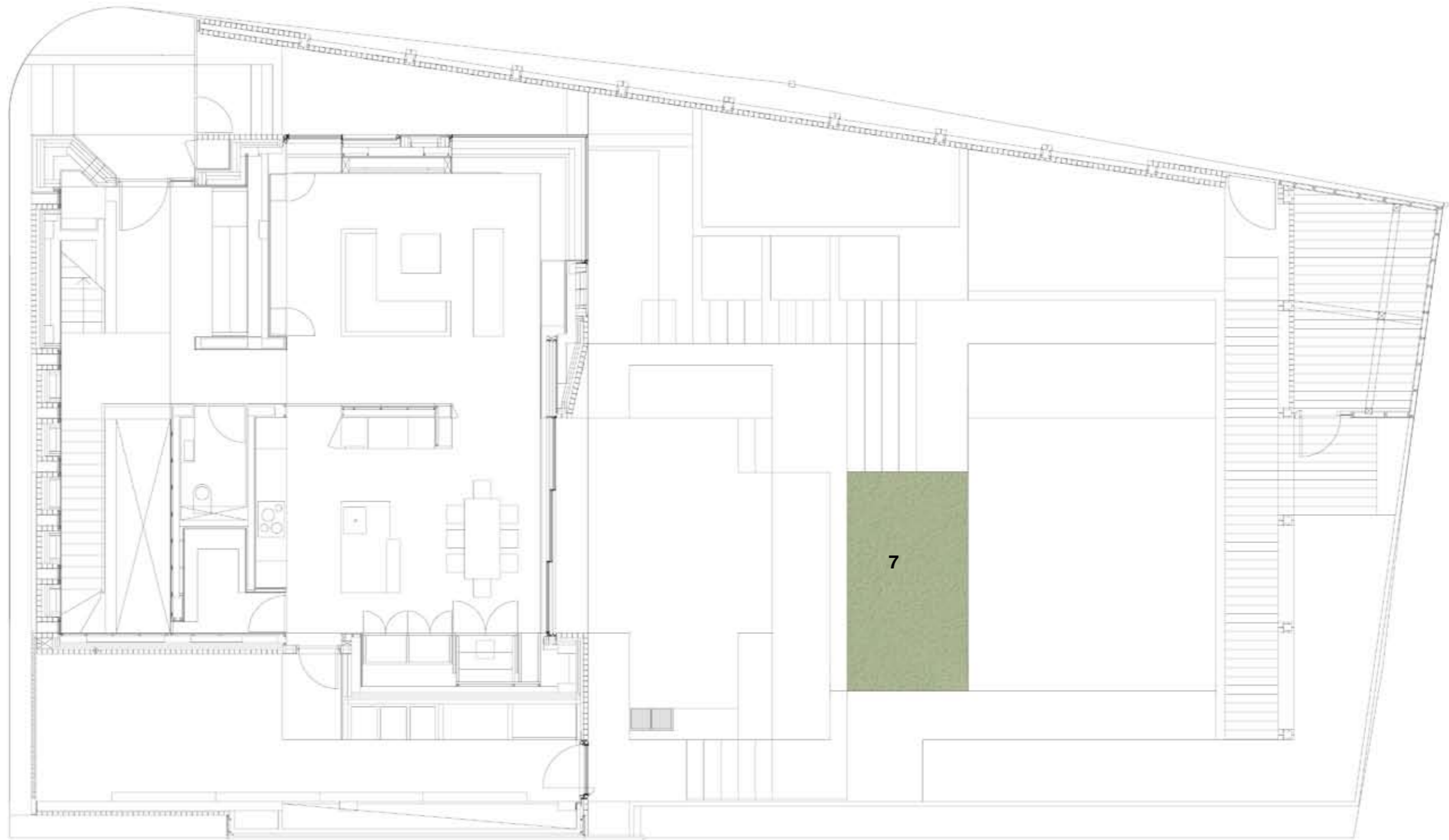


(10) Soleirolia soleirolii for the garden area in front of living room.



(9) Bamboo screen

HERBACEOUS PERENNIALS



HERBACEOUS PERENNIALS

In contrast to evergreen hedge and shrub planting, herbaceous perennials introduce seasonality, varying sizes and colour.

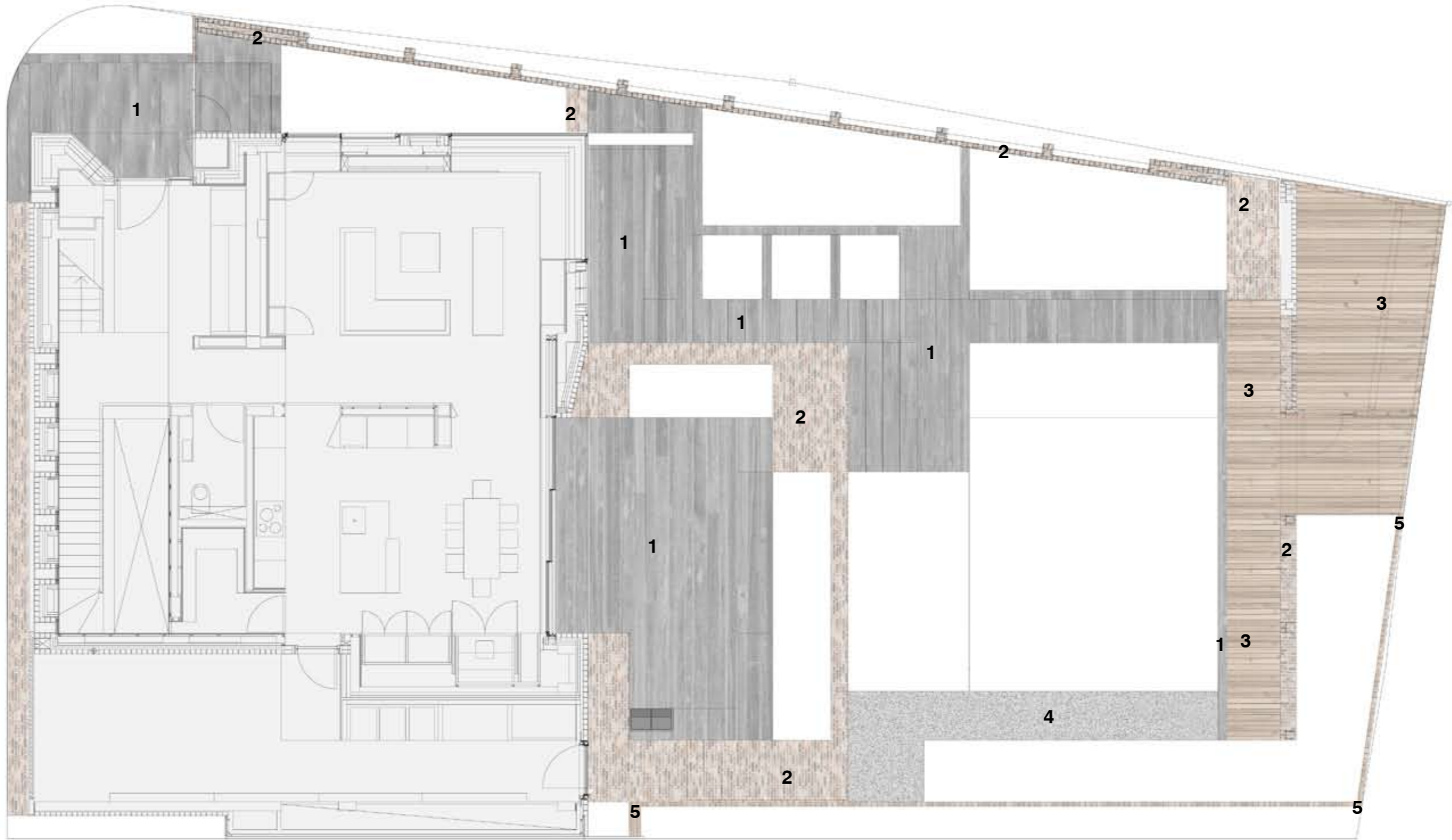


(7) Mixed perennials and grasses as shown in above schemes by BHSLA will be set against brick wall and a grove of trees.

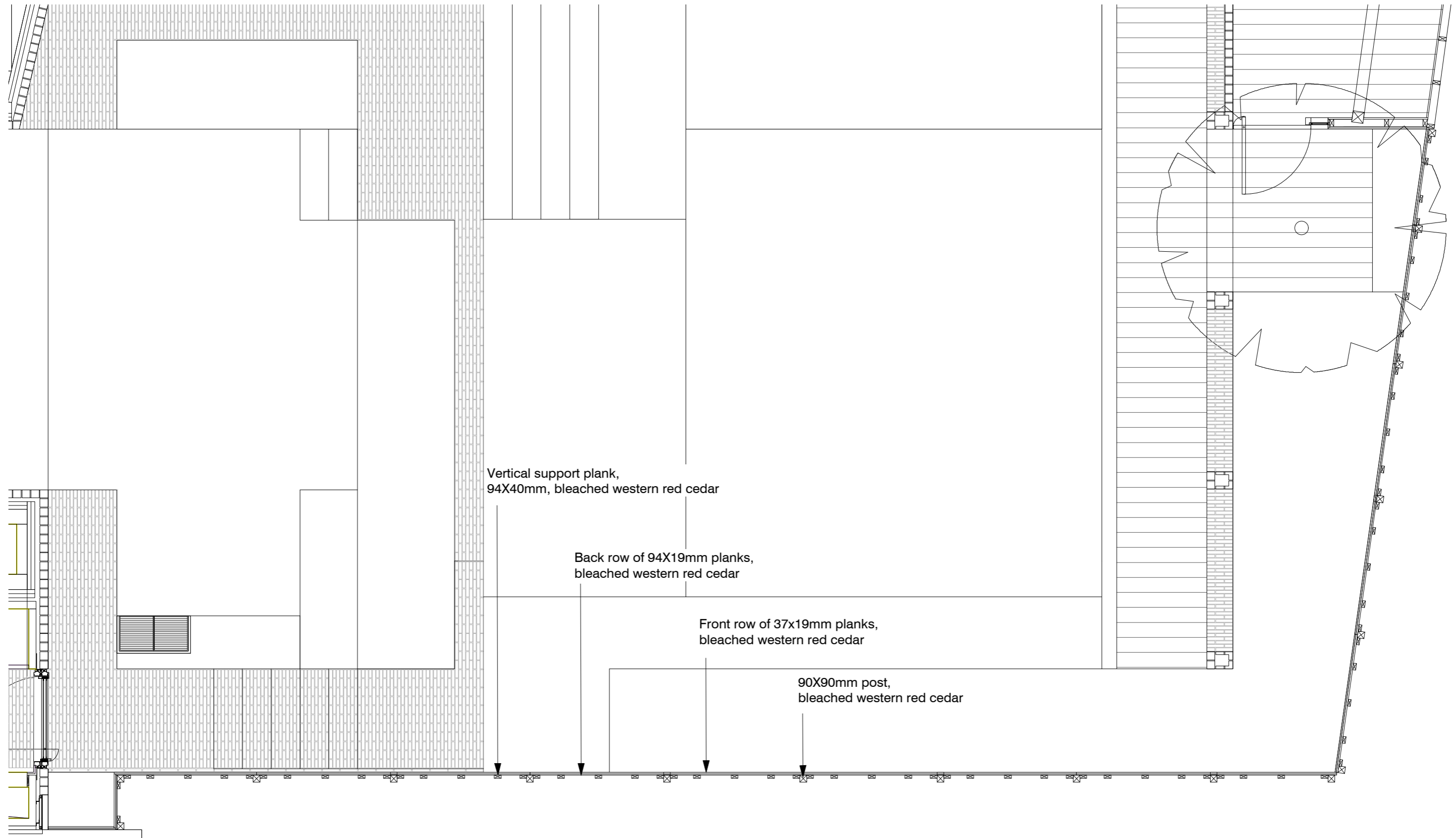


(7) Mixed herbaceous planting with gravel bed

HARD LANDSCAPE



TIMBER FENCE PLAN



SCALE:1:50 @A3

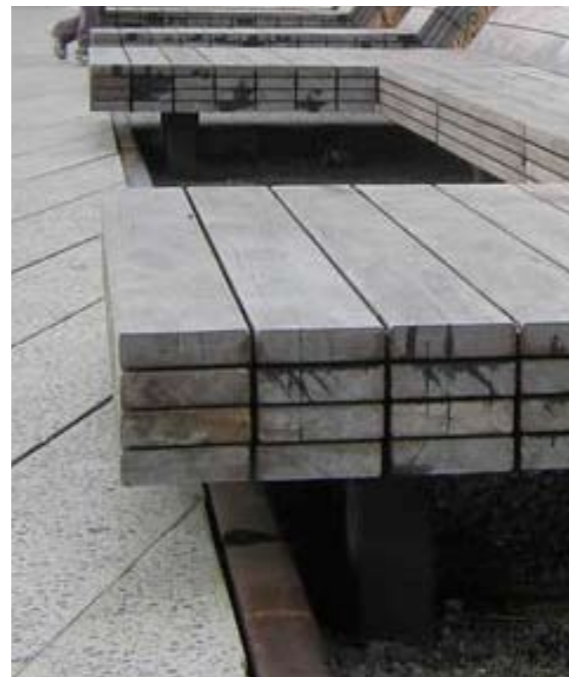
TIMBER FENCE AND BENCH



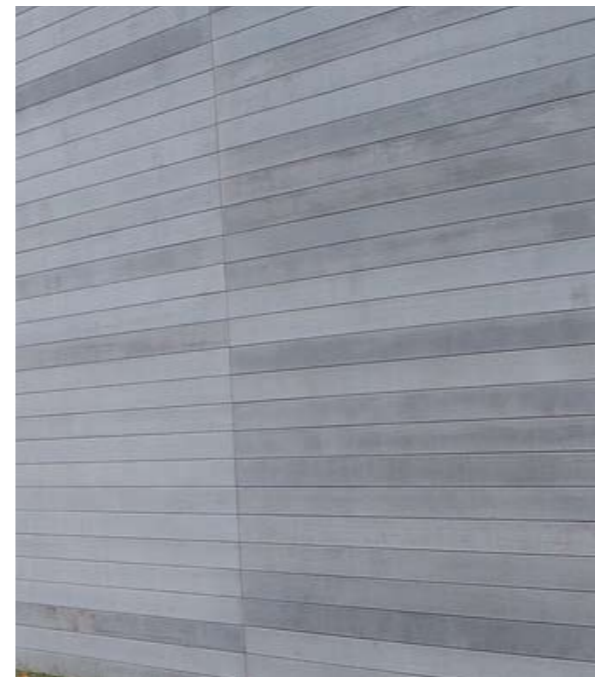
Timber fence precedent



Seamless transition from timber to bricks



Stacked timber bench

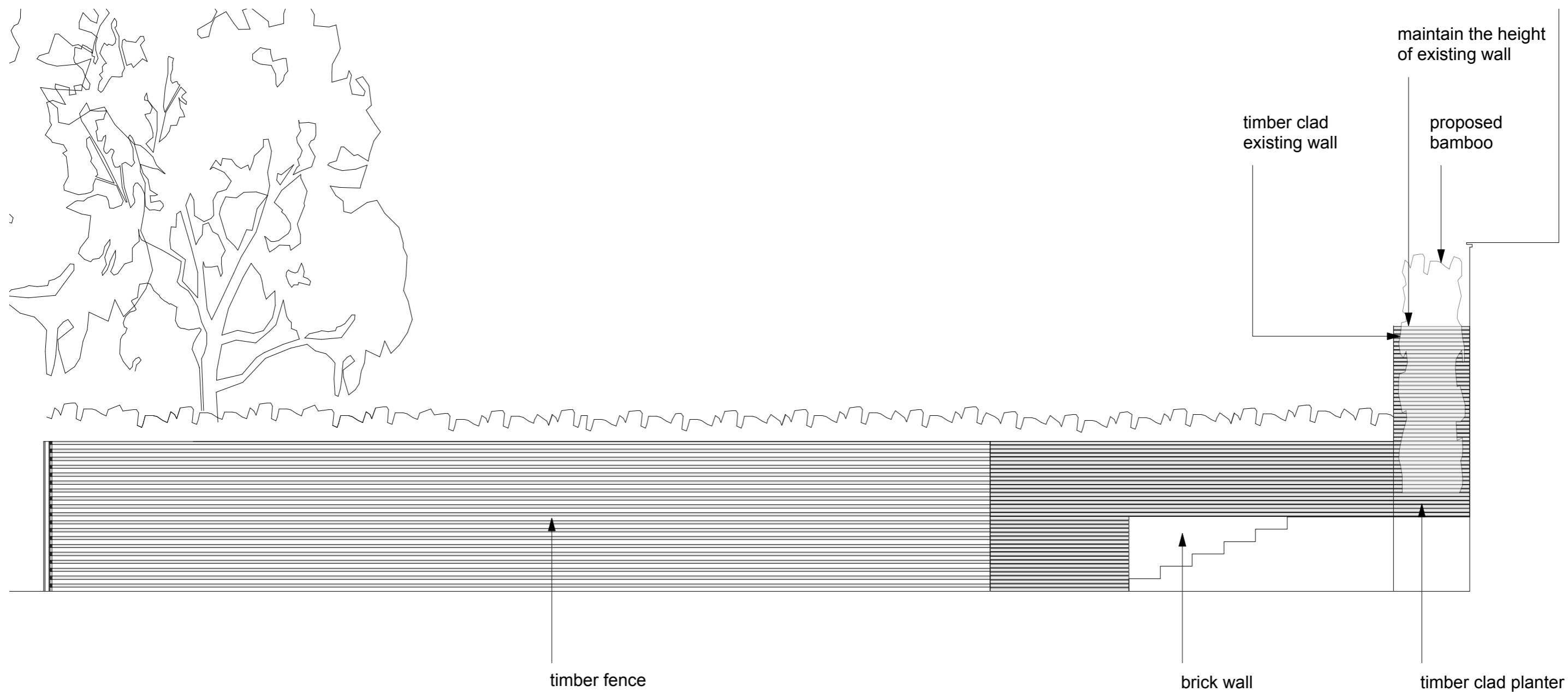


Bleached western red cedar



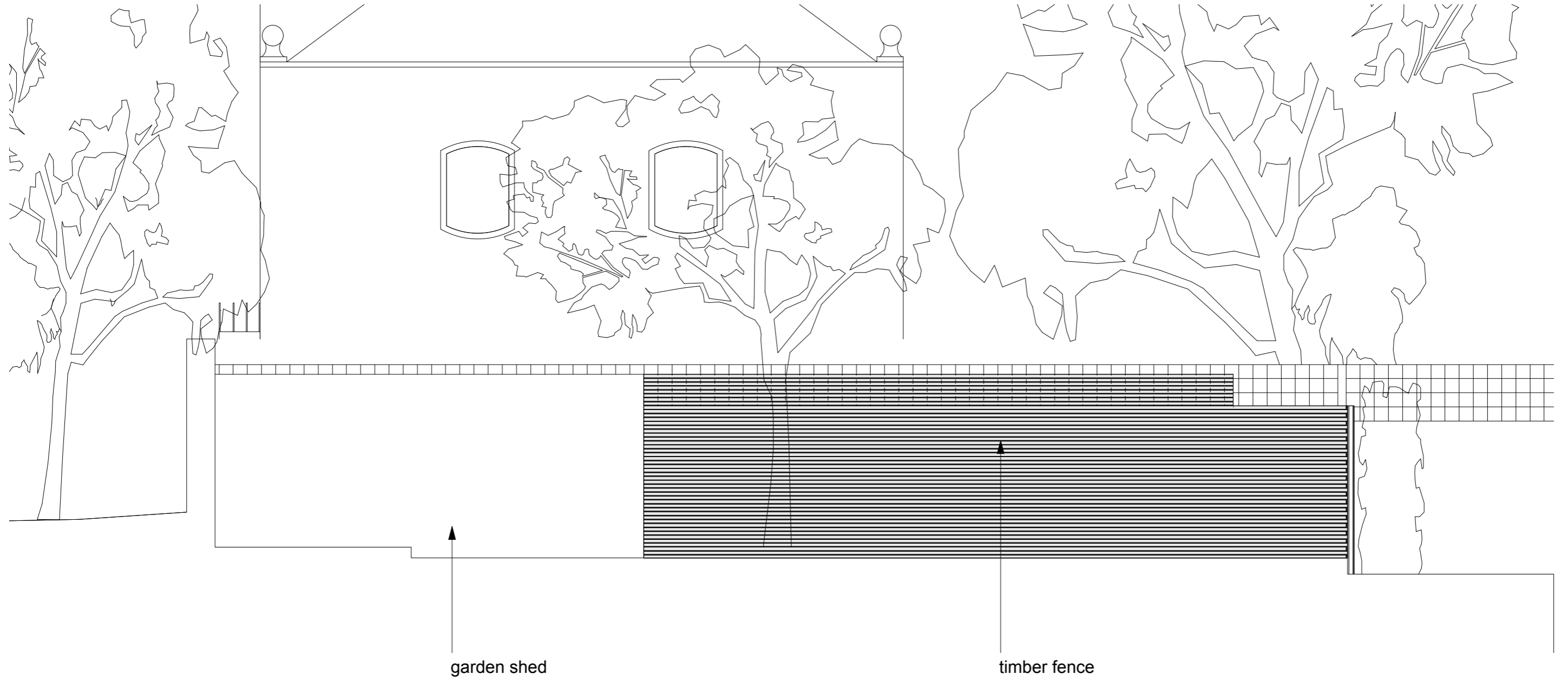
Bleached western red cedar facade

TIMBER FENCE WEST ELEVATION



SCALE:1:100 @A3

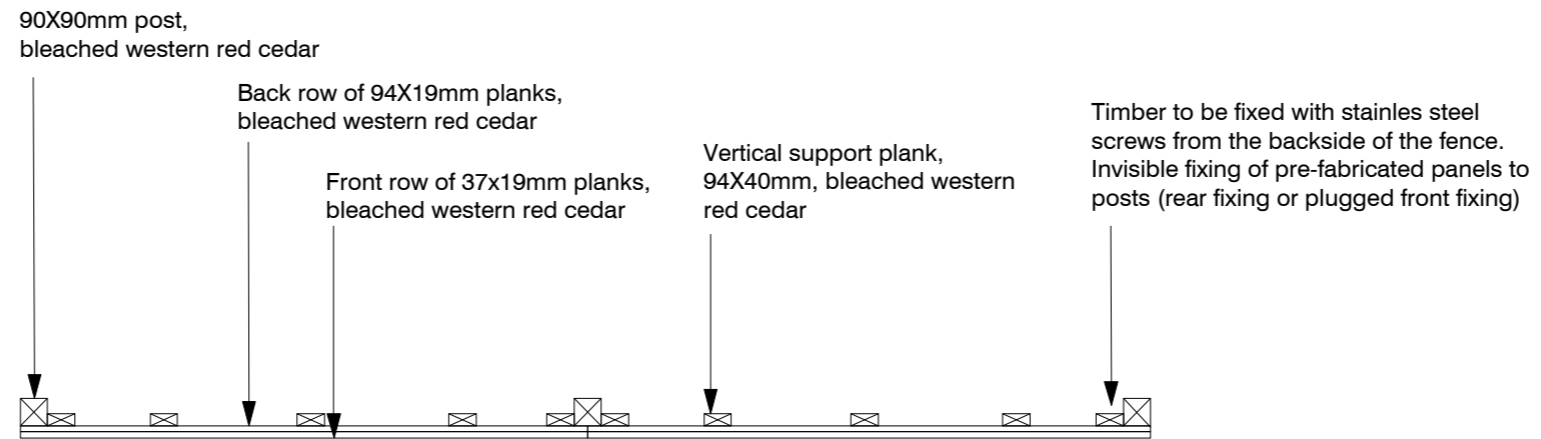
TIMBER FENCE SOUTH ELEVATION



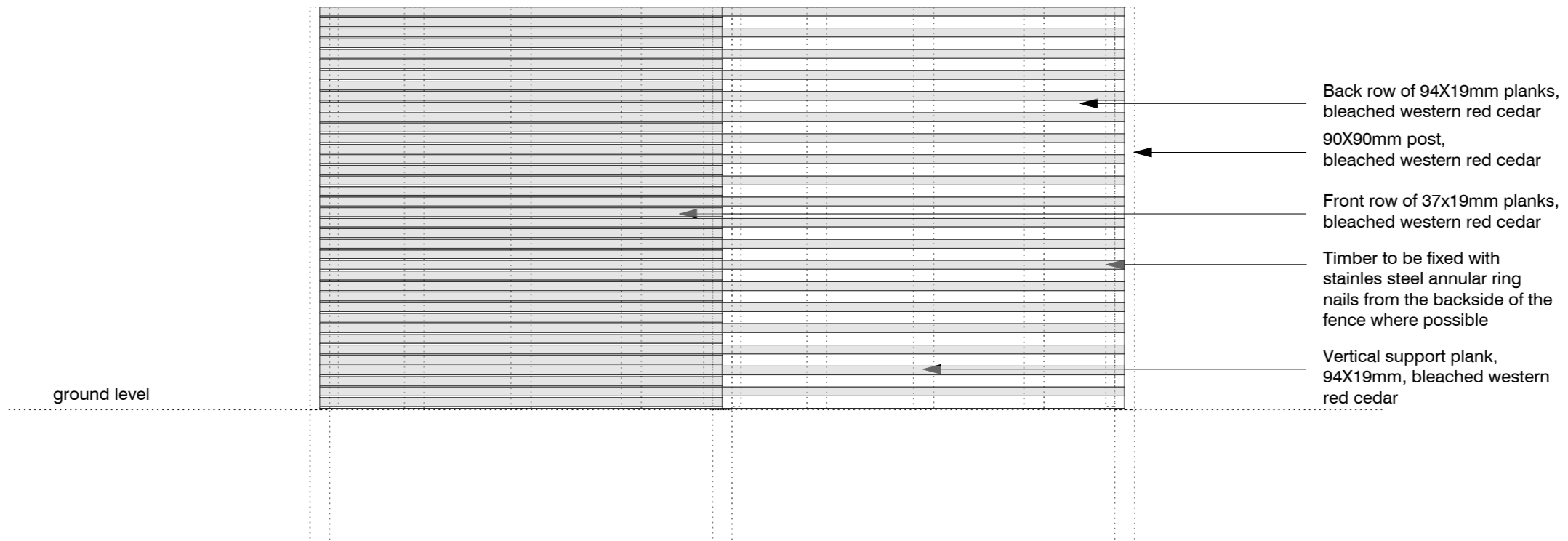
SCALE:1:100 @A3

TIMBER FENCE AND BENCH DETAILS

A Timber fence
Plan view



B Timber fence
Front elevation



SCALE:1:25 @A3