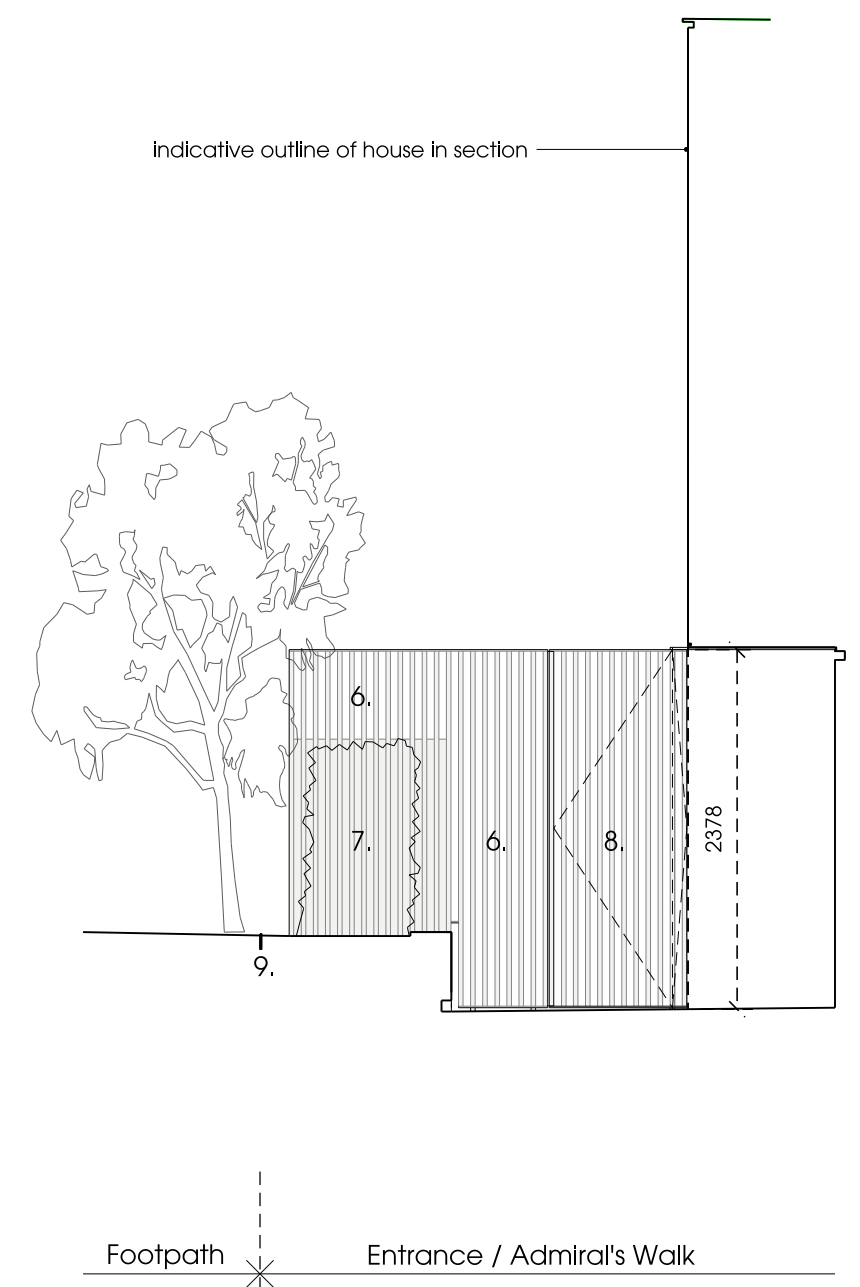
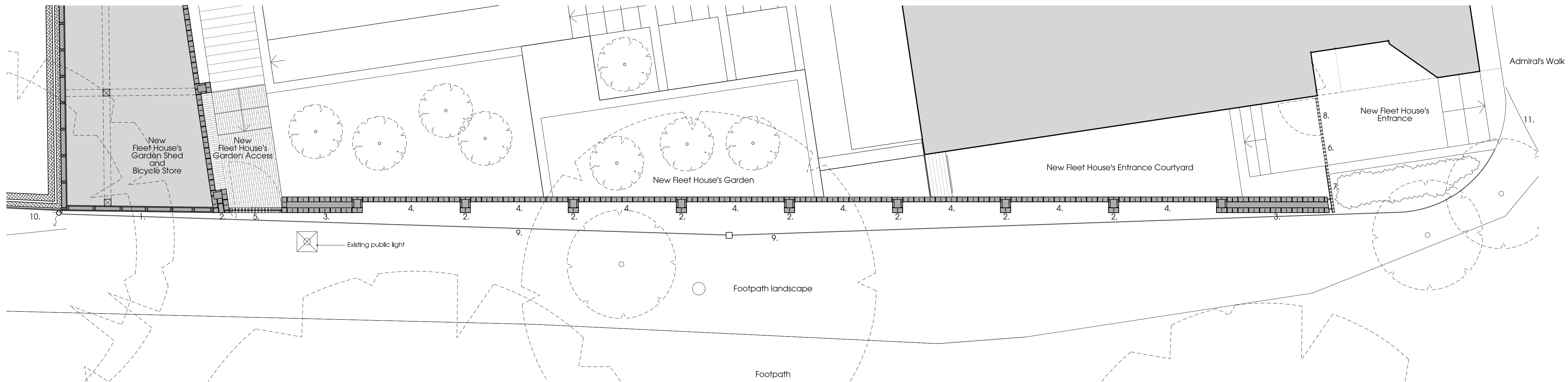


01 Garden Wall - East Elevation
PP_900 Elevation along Footpath



02 Garden Wall - North Elevation
PP_900 Elevation along Admiral's Walk



03 Garden Wall - Plan
PP_900 East side

- KEY:
1. New timber cladding to garden shed:
 - bleached western red cedar
 - timber structure
 2. New brick piers:
 - brick dimensions = 228 x 108 x 40mm
 - flush joints with lime mortar
 3. New brick wall (1 1/2 leaf deep):
 - brick dimensions = 228 x 108 x 40mm
 - flush joints with lime mortar
 4. New brick wall (1/2 leaf deep) with perforations:
 - brick dimensions = 228 x 108 x 40mm
 - flush joints with lime mortar
 5. New metal entrance gate:
 - vertical tubes set on a solid back panel folded at the top and bottom
 - powder coated steel with metallic finish, colour bronze
 - gate lockable with key and connected to general alarm system.
 6. New metal fence:
 - vertical tubes set on horizontal bars (top and bottom)
 - powder coated steel with metallic finish, colour bronze
 7. New metal fence:
 - vertical tubes set on a solid back panel folded at the top and bottom
 - powder coated steel with metallic finish, colour bronze
 8. New metal gate:
 - vertical tubes set on horizontal bars (top and bottom)
 - powder coated steel with metallic finish, colour bronze
 - gate lockable with key and connected to general alarm system.
 9. Aluminium lawn edging for boundary line
 - 100mm deep
 - Fixing stakes at intervals
 10. Existing neighbour's extension timber cladding
 11. Existing kerb line made good and repaired with new stone kerb

Notes

Contractor to check all dimensions on site. Do not scale from this drawing. Stanton Williams to be advised of any variation between the drawings and site conditions.

© Stanton Williams. All rights described in Chapter IV of the Copyright, Designers and Patents Act 1998 have been asserted.

To be read in conjunction with the specification and all relevant drawings.



Revision Date Description Location

Revision	Date	Description	Location

Stanton Williams
36 Graham Street
London N1 8GJ
Phone +44 (0)20 7880 6400
Email
www.stantonwilliams.com

STANTON
WILLIAMS

Project
Fleet House
3 Admiral's Walk, Hampstead
London NW3 6RS

Date 11/04/2014
Scale @ A1 (A3) 1:50 / A1
Status Planning

Drawn PT
Checked PT
Approved PR

Drawing Title
Proposed Layout
Garden Wall
East Elevation

Project No.	Drawing No.	Revision
451	PP_900	-