

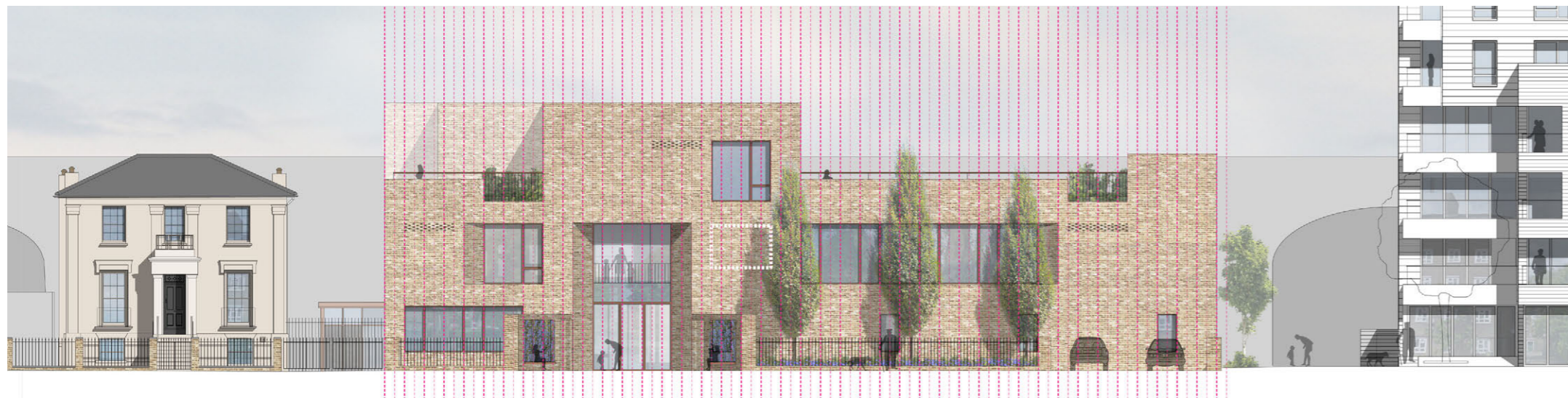
4.0 Appearance

4.4 Hawley Road Elevation

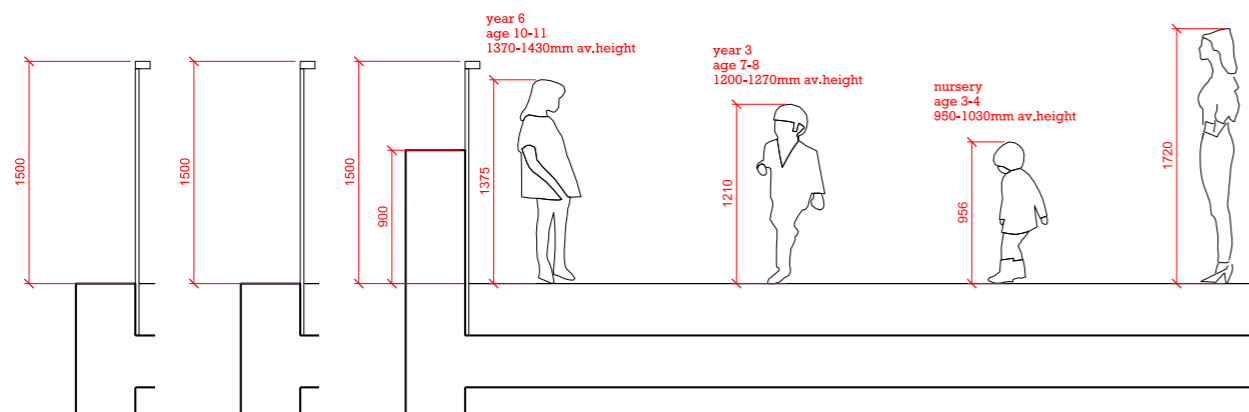


The vertical rhythm of the existing villas along Hawley Road have informed the design of the front wall at pavement edge and secondary window locations.

Although the massing is established in the consented parameter plans, vertical alignments have been composed to quietly express the central entrance 'portico' in relation to the neighbouring listed villa and the consented residential block to the west.



The vertical setting out of the elevation derives from the width of a standard brick 215mm + 10mm mortar wide. This diagram overlays 450mm, 2 brick modules and 900mm, 4 brick modules over the elevation. The alignments and misalignments are generated from this grid.



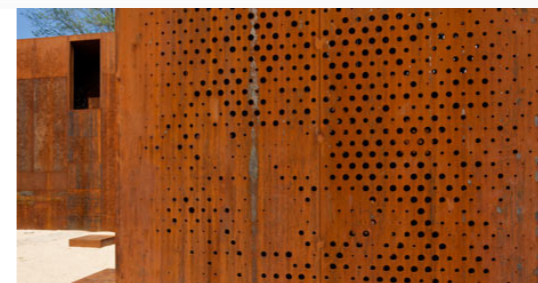
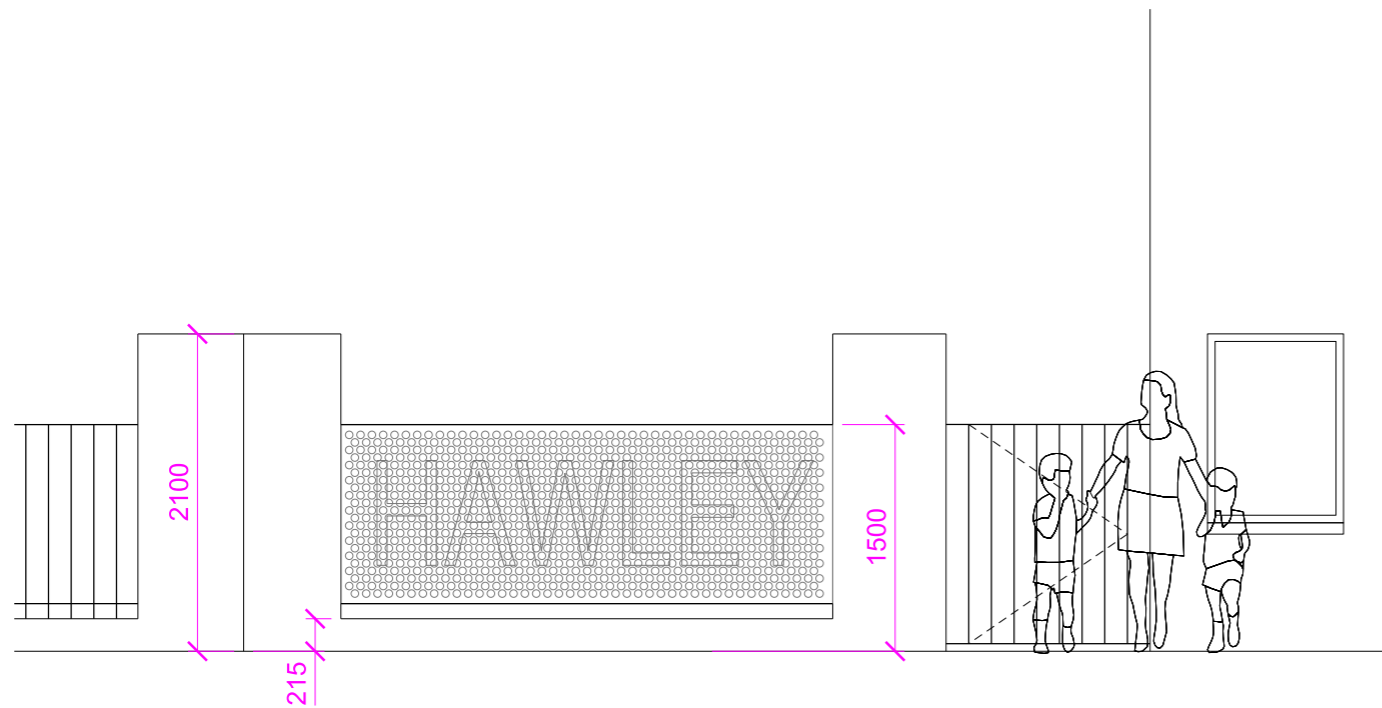
Scale and growth are two recurring themes throughout the school design. Solid parapet datum heights vary in height depending on their function.

4.0 Appearance

4.4 Hawley Road Elevation

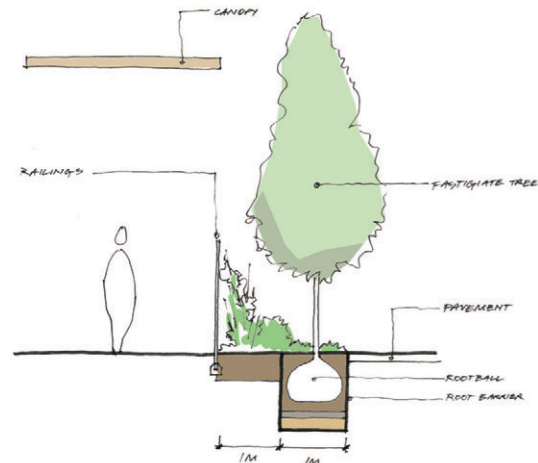
The main visitor's entrance is signalled by a 1m deep chamfered brickwork reveal, double-height, and flanked by angled fin walls to provide a welcoming, clearly visible entrance for visitors. The fin walls frame an area of signage / artwork to be confirmed via a planning condition.

The white dotted area denotes a placeholder for future artwork / signage. It is considered that the artwork / signage would be dealt with via a planning condition.



4.0 Appearance

4.5 West Elevation



Sketch section through courtyard threshold



Examples of exposed plant.



Proposed view from approved pedestrian route towards pupil's entrance

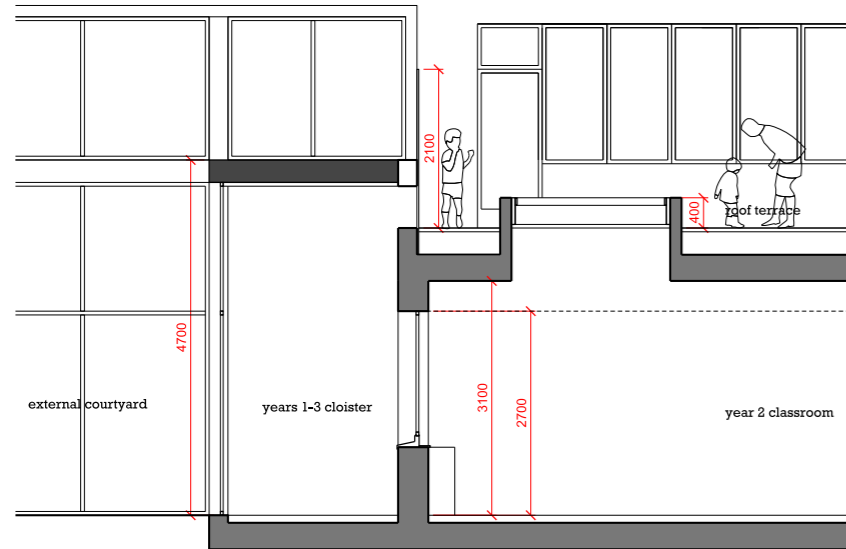
The west elevation faces the approved public pedestrian route that joins Hawley Road to the approved new market buildings and canal. The elevation reflects this more sheltered environment, with the brick outer skin broken by the central private courtyard. This forms the main pupil's entrance to the school, secured by 2.4m high metal railings, with views in screened by planting to the 1m wide landscape strip. This is also where service access to bin stores and kitchen is proposed. The plant room at first floor level is to be glazed. In-keeping with aspirations of a high sustainable performance school, the proposal seeks to celebrate the mechanical plant within, adding animation to the flank wall.



Proposed west elevation

4.0 Appearance

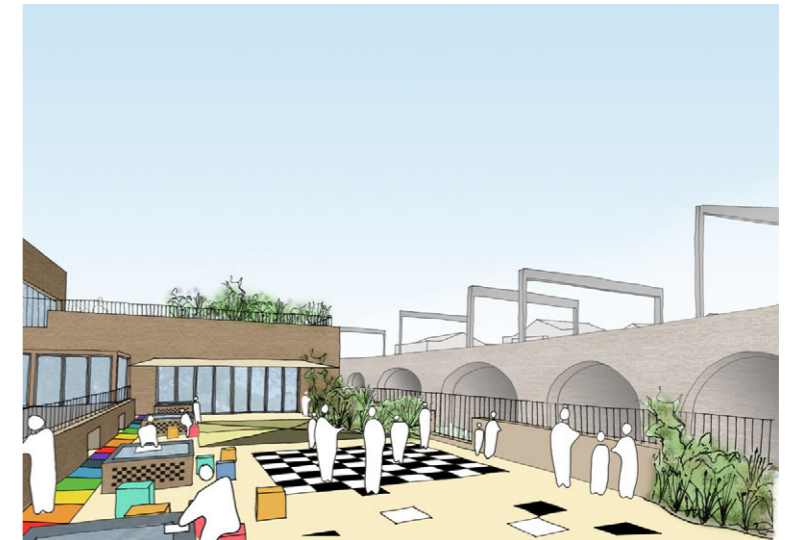
4.6 Playground Elevations



Section through classroom and terrace



Sketch of view from playground towards Years 1-3 classrooms



Sketch of proposed year 5 external classroom and first floor terrace



Proposed south elevation

4.0 Appearance

4.6 Playground Elevations



Proposed view from playground towards nursery and reception

The elevations to south and east seek to maximise the visual connections between the main playground and the upper landscape terraces. The modulation of the solid parapet becomes more playful to enhance views out to the playground. Glazed openings to years 1-3 classrooms and the nursery and reception classes are screened by external timber canopies which are similar in design to the central courtyard cloister.



Proposed east elevation

4.0 Appearance

4.7 Central Courtyard

Central to the scheme is a private, landscaped external courtyard and a double height 'heart' space bounded on three sides by a timber cloister structure. On two sides this is external, offering cover for parents, children and bicycles in inclement weather and defining the entrance route to the main stair. The third side, to the south, forms an internal cloister and doubles as cloakroom and break-out space for years 1-3. Openings are proposed to the solid parapet of the terrace above to retain visual connections.

Timber is chosen for the cloister structure to contrast with the solid, protective brickwork elements that wrap around the perimeter of the scheme.



Proposed 'heart' space sketch



Proposed internal courtyard sketch