

## 4.0 Appearance

### 4.1 Wider Site Context

#### Wider Site Context

The wider site context is composed of a number of different materials.

Brickwork is the dominant construction material. This is treated in a number of ways. The more traditional residential properties are left as either exposed brickwork or finished with a variety coloured of stucco.

Camden High Street is treated with applied three dimensional graphics and bright paintwork that gives the area its distinct character.



## 4.0 Appearance

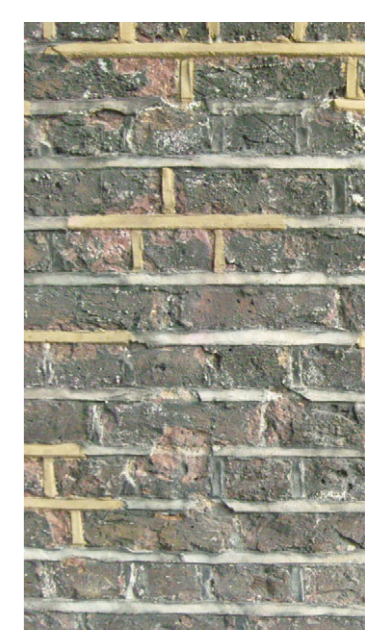
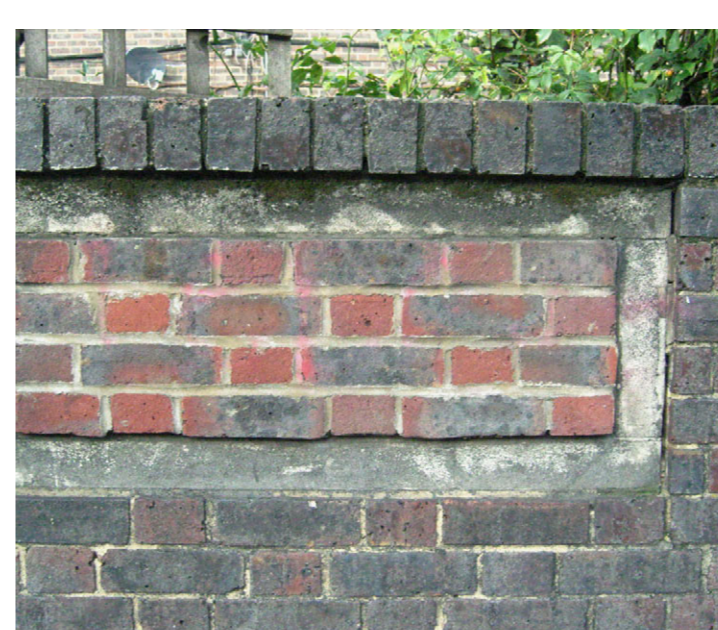
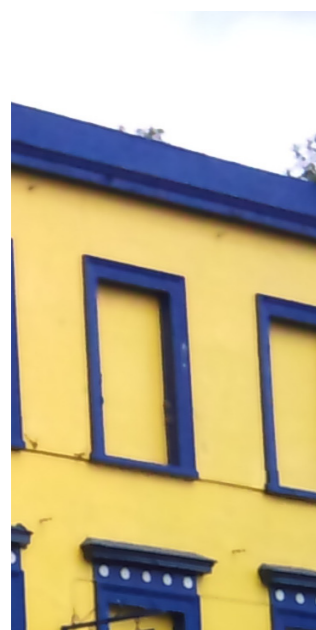
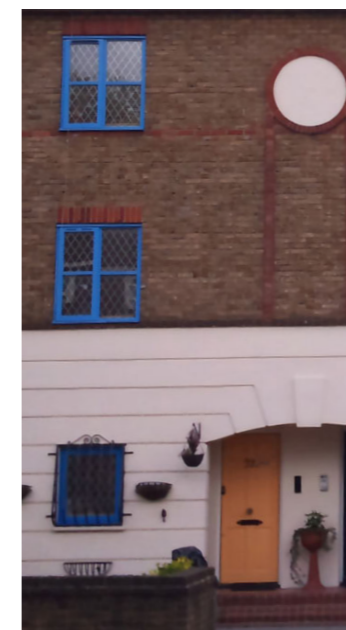
### 4.2 Local Site Context

#### Local Site Context - Hawley Road

The prevailing material of construction along Hawley Road is brick. A number of different type of bricks are used with no single dominant tone.

Much of the brick has been surfaced with stucco. This creates a sharp contrast between the smooth stucco and more textured brickwork.

Lapped clay tile cladding as proposed for neighbouring Building W, consented January 2013.



Stretcher-bond brickwork options with horizontal emphasis proposed for neighbouring Building X, consented January 2013.

## 4.0 Appearance

### 4.3 Materials

The intention has been to create a building that has a strong civic presence. The proposal achieves this through both the detailed design of the facades and the choice of materials.

A palette of predominantly brick give the building a strong civic quality that is in keeping with the local context of Camden.

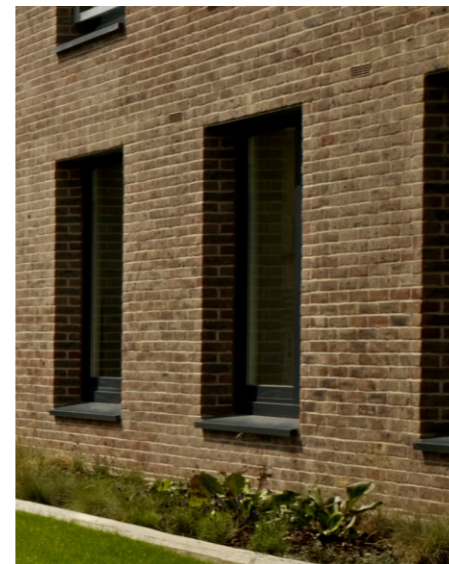
To compliment the predominantly brickwork external elevations, warm colour tones have been introduced to window frames, cills, soffits and parapet. These also define and accentuate facade component and break down the mass of the building.

Key drivers for material selection are:

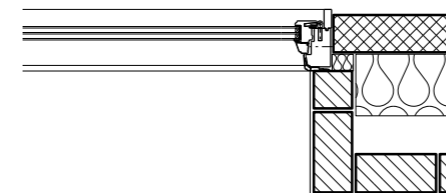
- Quality of finish
- Longevity
- Ease of maintenance



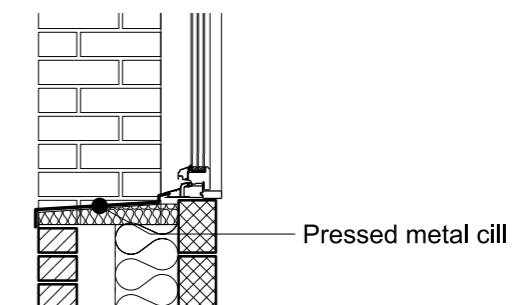
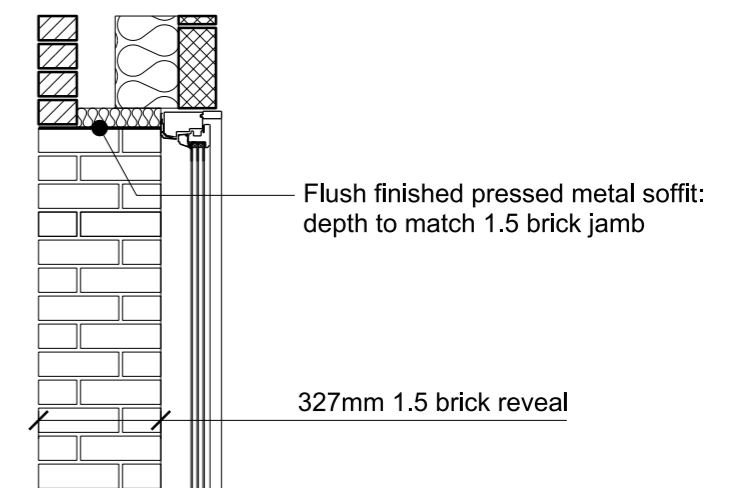
Proposed north elevation



Example of brickwork window reveals



Typical window jamb detail (plan)



Typical window cill and head details (section)

## 4.0 Appearance

### 4.3 Materials

#### Brickwork

A light textured brick is used as the primary material. The brick returns at the reveals to the windows and terraces to express the depth of the facade. Extract vents to the mechanically ventilated classrooms and hall are to be screened by an open-weave brickwork detail which repeats on all external elevations.

#### Timber

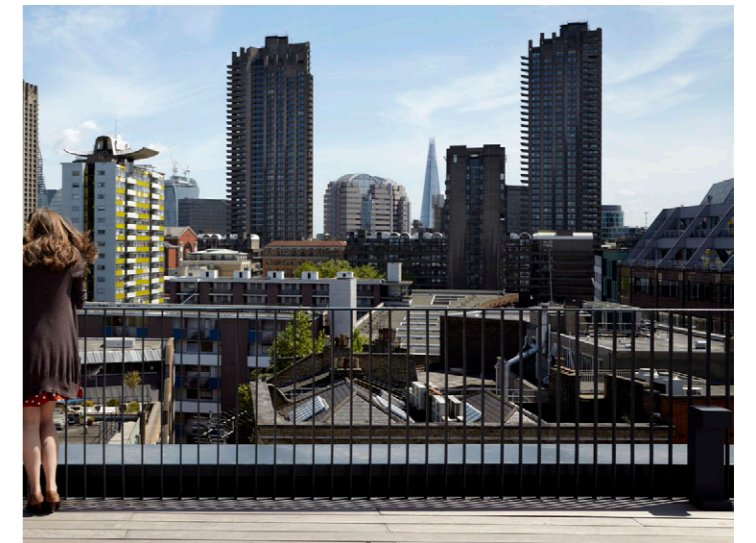
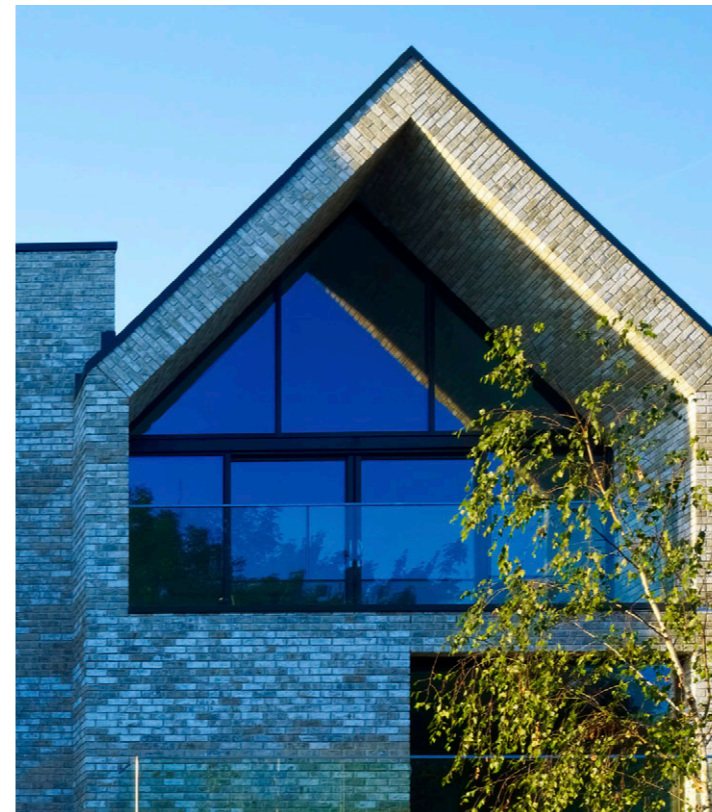
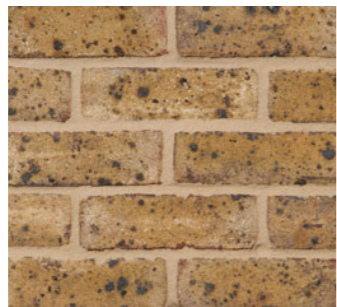
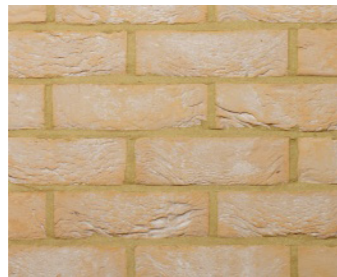
Timber is proposed for the cloister structure that wraps the internal courtyard to provide a warmer character to the internal courtyard elevations.

#### Windows / Entrance Glazing

Large triple glazed units are proposed to all school spaces and a double height opening to the visitors entrance. The double-height internal 'heart' space is also to be predominantly triple glazed.

#### Metal balustrades

Open metal balustrades provide edge protection to all inboard balconies. These are constructed with thin vertical balusters to create additional depth to the facade and unobstructed views out. The top rail will be coloured to match window frames and parapet details.



## 4.0 Appearance

### 4.4 Hawley Road Elevation



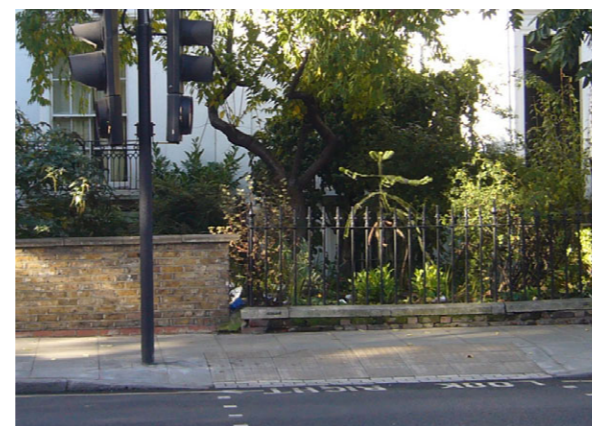
The north facing elevation is the school's primary public face. The main visitor's entrance is signalled by a 1m deep chamfered brickwork reveal, double-height, and flanked by angled fin walls, opening its arms to visitors. A further aperture provides high-level north-light to the hall space which is again chamfered to accentuate the depth of the facade.

The building is setback to the east, as set out in the approved parameter plans, to respond to the scale of the grade II listed property at 1 Hawley Road.

The building line is set back by 5m behind a landscaped garden and front wall, designed to respond to its listed neighbour. The front wall treatment is of a consistent language across both buildings but adapts to provide a suitable setting for the listed building.

The white dotted area denotes a placeholder for future artwork / signage. It is considered that the artwork / signage would be dealt with via a planning condition.

[Hawley School - Design and Access Statement](#)



Railing to 63 Kentish Town Road. The property was constructed at a similar time to 1 Hawley Road. A similar Victorian profile railing is deemed appropriate in front of 1 Hawley Road.



Example of a contemporary railing of a similar order to the Victorian profile version, offering good visual permeability.



Sketch view south along the consented pedestrian route