



## **Hawley Primary School** Design and Access Statement



# Contents

## Document Control

Job Title: Hawley Primary School  
Job number: 12160  
Report title: Design and Access Statement  
Report number: R022  
Revision: PA  
Date of issue: 28th March 2014  
Purpose of issue: Reserved Matters Planning Application  
Compiled by: David Murphy - AHMM  
Reviewed by: Will Lee - AHMM  
Date reviewed: 12th March 2014  
File name/location I:\AHMM Images 2012\12160 Hawley Primary School\5.0 Reports\140310\_DAS

<b>1.0 Introduction</b>	<b>5</b>
1.1 Executive Summary	
1.2 Context	
1.3 Design Overview	
<b>2.0 Scale</b>	<b>13</b>
2.1 Approved Parameter Plans	
2.2 Proposed Massing	
<b>3.0 Layout</b>	<b>17</b>
3.1 Site Organisation	
3.2 Attenuation Tank	
3.3 HS2	
3.4 Interim site access	
3.5 Accommodation Overview	
3.6 Proposed Floor Plans	
3.7 Typical Unit Layouts	
<b>4.0 Appearance</b>	<b>26</b>
4.1 Wider Site Context	
4.2 Local Context	
4.3 Materials	
4.4 Hawley Road Elevation	
4.5 West Elevation	
4.6 Playground Elevations	
4.7 Central Courtyard	
4.8 Key Views	
<b>5.0 Access</b>	<b>40</b>
5.1 Refuse Strategy	
5.2 Cycle Parking Strategy	
5.3 Vehicle Parking Strategy	
5.4 Cleaning & Maintenance Strategy	
5.5 Security	
<b>6.0 Appendices</b>	
6.1 Appendix A: Landscape Statement	
6.2 Appendix B: Energy Statement	
6.3 Appendix C: Transport Statement	



## 1.0 Introduction

### 1.1 Executive Summary



This Design and Access Statement has been prepared as supporting documentation for the Reserved Matters Application of Hawley Primary School.

The Design Documents have been prepared by and with the input of the Project Team who are:

*Client: Stanley Sidings Limited*

*Local Authority: London Borough of Camden*

*School Client: Hawley Infant School*

*School Design Advisor: SCABAL*

*Architect: Allford Hall Monaghan Morris Architects*

*Landscape Architects: Fabrik*

*Planning Consultants: Gerald Eve*

*Structural Engineers: Walsh Group*

*Services Engineers: Waterman Group*

*Transport Consultants: Arup*

*Cost Consultants: Gardiner + Theobald*

*Environmental Consultants: Waterman Group*

*Heritage Architects: Stephen Levrant*

This Reserved Matters submission sets out the design within the context of the Approved Camden Lock Village Masterplan. This document describes the scheme in terms of scale, layout, appearance, and access. The other reserved matter, namely landscaping is described in the Landscape Design Statement, prepared by Fabrik and appended to this document. The other appendices contain support information to the main chapters which includes:

- Energy Statement
- Transport Statement





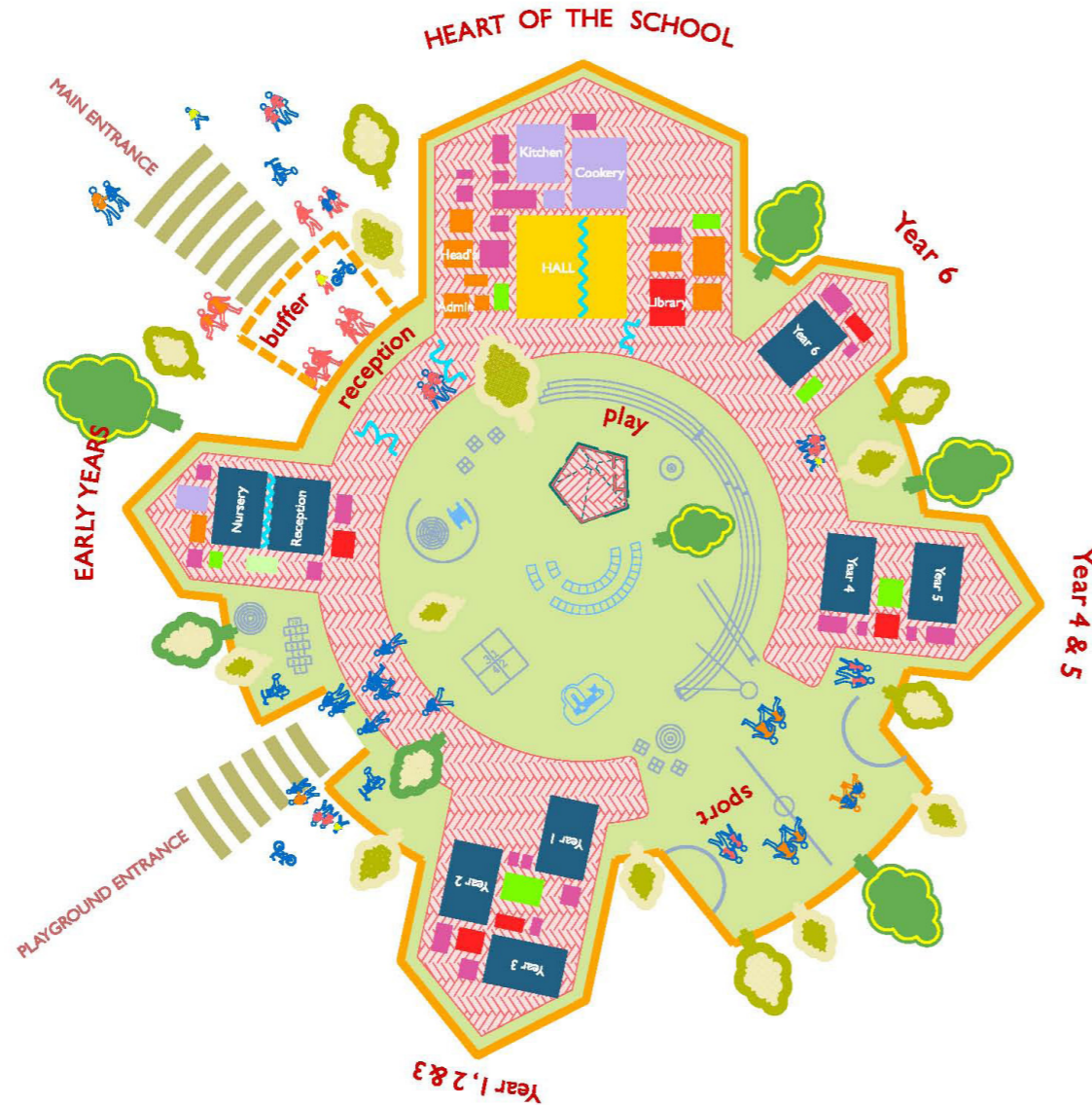
# 1.0 Introduction

## 1.1 Executive Summary

### Summary of Proposals

The design is for a 1 form entry primary school and is based on SCABAL's Design Brief Issue 2 - June 2012.

- 26 place nursery ( 26 pupils in morning, 26 pupils in the afternoon).
- 1 Form Entry Primary school for 7 classes of 30 pupils.
- Total = 236 Places



<b>Age</b>	3-4	5	6	7	8	9	10	11	12	13	14	15	16	17	
<b>Academic Year</b>	nursery	reception	Y1	Y2	Y3	Y4	Y5	Y6	Y7	Y8	Y9	Y10	Y11	Y12	Y13
<b>National Curriculum</b>	FOUNDATION	KEY STAGE 1	KEY STAGE 2					KEY STAGE 3			KEY STAGE 4	6 <sup>TH</sup> FORM			
<b>Hawley Primary School</b>	[Yellow bar]														

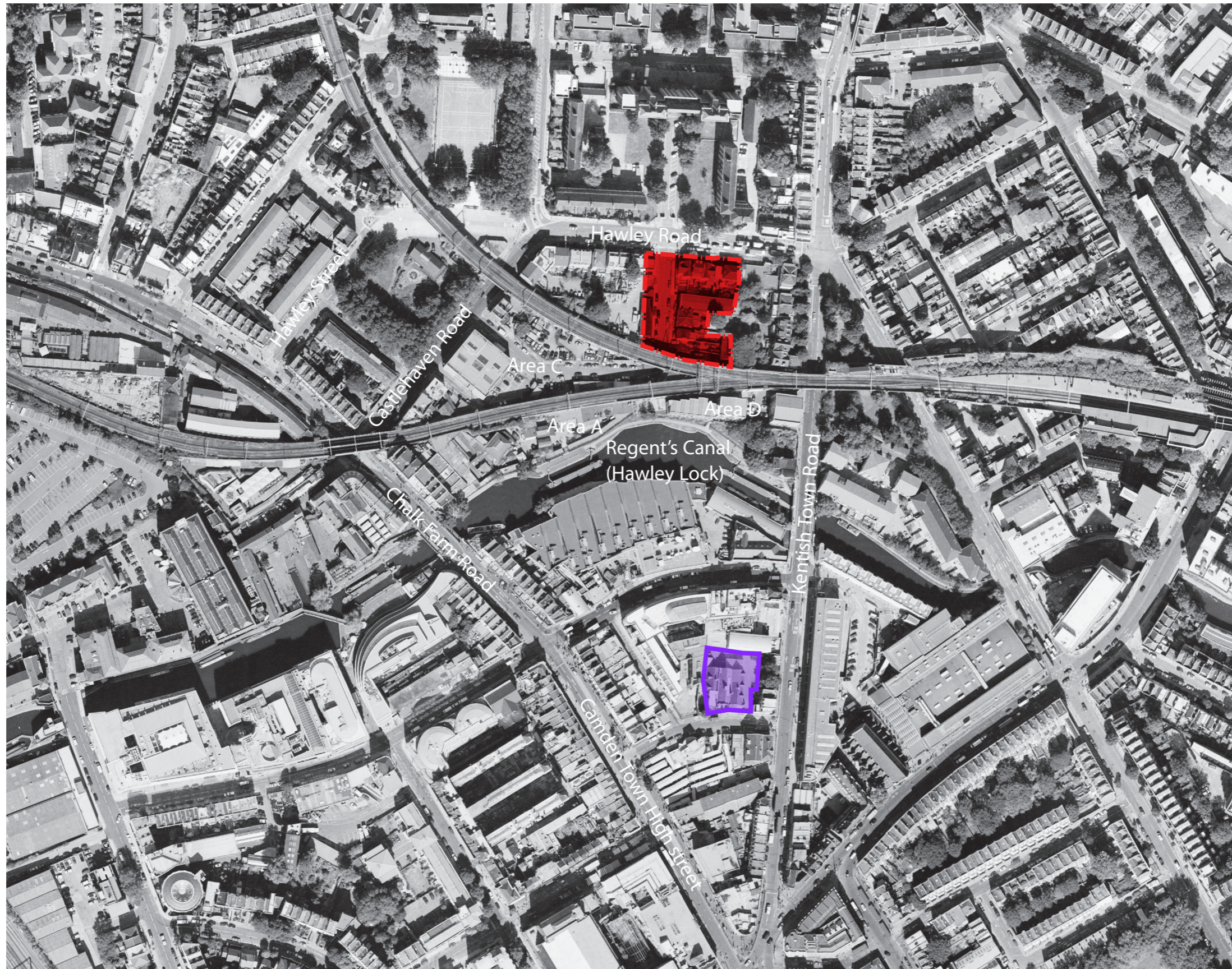




Boundary of Outline Application for School Use



Existing Hawley Infant School



©2011 Google, Map Data ©2011 Tele Atlas