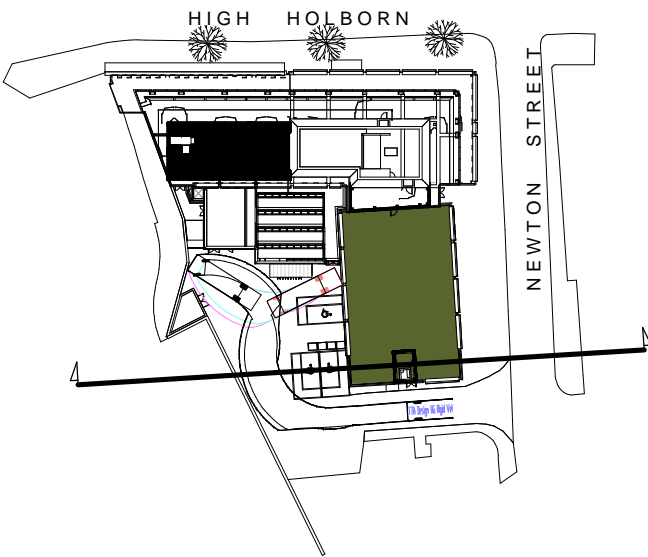


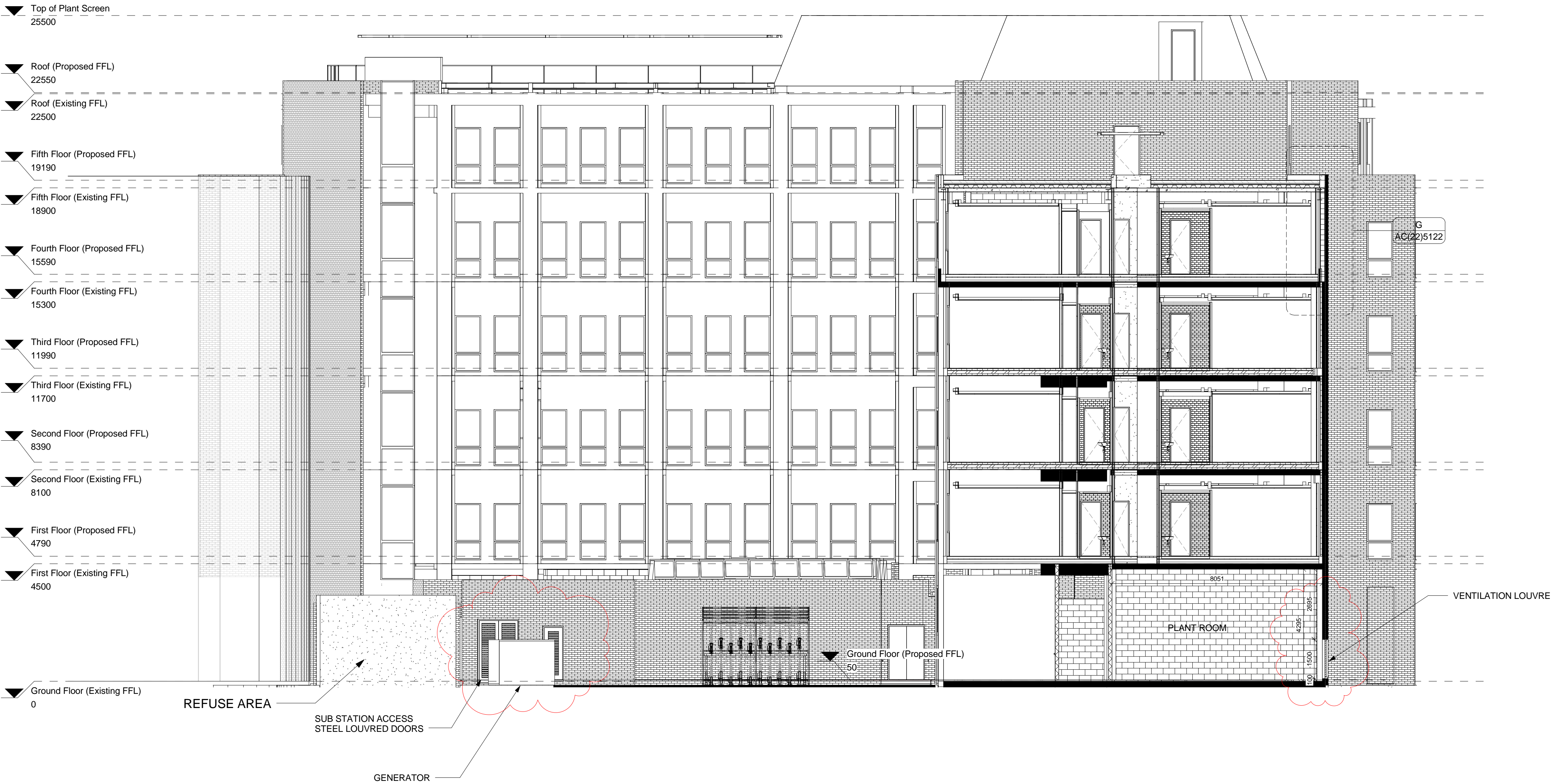
Responsibility is not accepted for errors made by others in scaling from this drawing. All construction information should be taken from figured dimensions only.

0mm 50mm 100mm

A1 Original Sheet Size



KEY PLAN



14/04/2014	D	NBH	AB	Amendments according to planning consultants comments
10/04/2014	C	NBH	AB	Amended according to Planning Consultants comments
20/03/2014	B	NBH	AB	Information Added
13/05/2013	A	DW	AB	PLANNING ISSUE
date	rev	name	chk	note

© Stride Treglown Limited 2012.

**Stride Treglown**

Architecture Town Planning Interior Design Building Surveying Landscape Design Graphic Design  
3 Cosser Street, London, SE1 7BU  
T 020 7401 0700 F 020 7401 0701 www.stridetreglown.co.uk

PROJECT  
HOXTON HOTEL HOLBORN  
199-206 HIGH HOLBORN  
LONDON WC1V 7BU

DRAWING TITLE  
SECTION B-B (PROPOSED)

INFORMATION			
SCALE	DATE	DRAWN BY	CHECKED BY
As indicated	JAN 2013	DW	AB
PROJECT NUMBER	DRAWING NUMBER	REVISION	
20918	AP(00)8031	D	

B SECTION B-B  
1:100