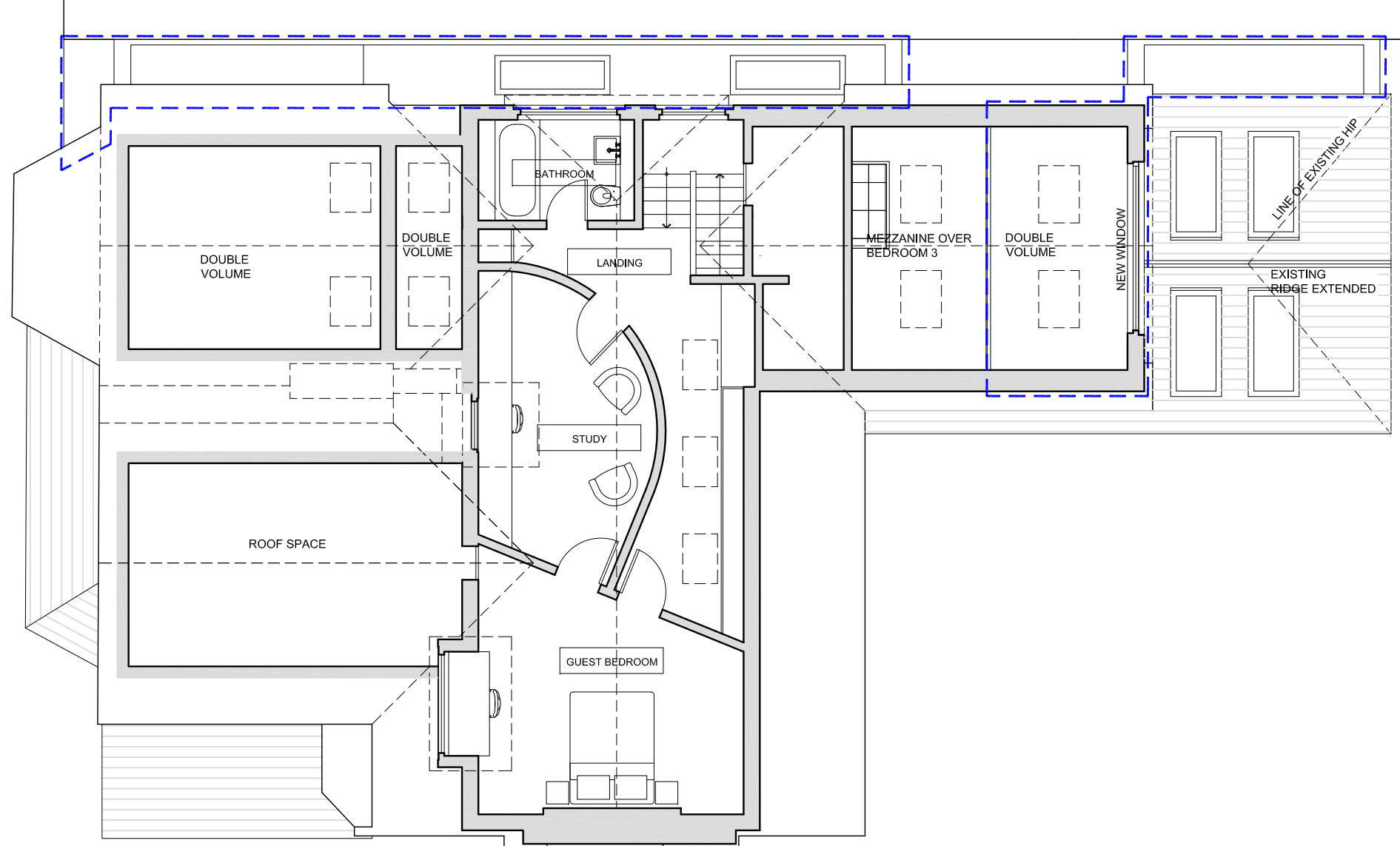
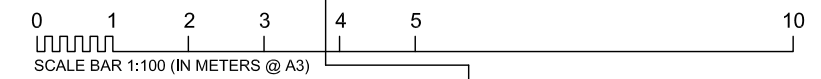


BLUE DASHED LINE DENOTES  
 CONSENTED WORKS, CAMDEN  
 APPLICATION NO. 2013/5996/P GRANTED  
 24 JANUARY 2014.



SECOND FLOOR PLAN

1:100 @ A3



<b>general notes</b>
THIS DRAWING IS COPYRIGHT OF STUDIO MARK RUTHVEN. THIS DRAWING MUST BE READ IN CONJUNCTION WITH THE DESIGNER'S RISK ASSESSMENT, SPECIFICATION AND ALL OTHER RELEVANT DOCUMENTATION AND DRAWINGS. STUDIO MARK RUTHVEN ACCEPT NO LIABILITY FOR ANY EXPENSE, LOSS OR DAMAGE OF WHATSOEVER NATURE AND HOWEVER ARISING FROM ANY VARIATION MADE TO THIS DRAWING OR IN THE EXECUTION OF THE WORK TO WHICH IT RELATES WHICH HAS NOT BEEN REFERRED TO THEM AND THEIR APPROVAL OBTAINED.
FOR THE PURPOSE OF CONSTRUCTION DO NOT SCALE FROM THIS DRAWING OR THE COMPUTER DIGITAL DATA. ONLY FIGURED DIMENSIONS ARE TO BE USED.
IF IN DOUBT ASK.
<b>purpose of issue</b>
<b>PLANNING</b>

<b>notes</b>

<b>project name</b>		<b>26 REDINGTON ROAD LONDON NW3 7RB</b>		<b>StudioMarkRuthven architecture</b>	
<b>drawing title</b>		PROPOSED SECOND FLOOR PLAN		92 Prince of Wales Road Kentish Town London NW5 3NE T 020 7 485 0050 F 020 7 485 0030	
<b>rev</b>	<b>notes</b>	<b>date</b>	<b>by</b>	<b>checked</b>	<b>scale</b> 1:100 @ A3
	* do not scale from this drawing. * check all dimensions on site.				date 24.03.14
		<b>drawn by</b>		<b>checked</b>	
		RER		drawing no. RER-P-103	
				revision -	