



- NOTES:
1. This drawing remains the copyright of M&B Architects Ltd and shall not be copied in any format without written consent. The issue of the drawing in digital format only entitles the recipient to use the information visible in paperspace at the time of issue for the purposes of the named project only.
 2. All dimensions to be checked on site by those undertaking the work.
 3. Where reference is given to a written specification that shall take precedence over the drawing.
 4. Where two or more drawings illustrate the same element, the larger scale drawing takes precedence.
 5. Later drawing revisions and/or issue dates always take precedence over earlier versions.
 6. Elements that are subject to detailed design by others are purely indicative and you should make reference to the relevant information provided by those designers which will at all times take precedence over this drawing.
 7. All works are to be carried out to the satisfaction of Building Control and in accordance with current British Standards.

- EXISTING WALL
PROPOSED WALL

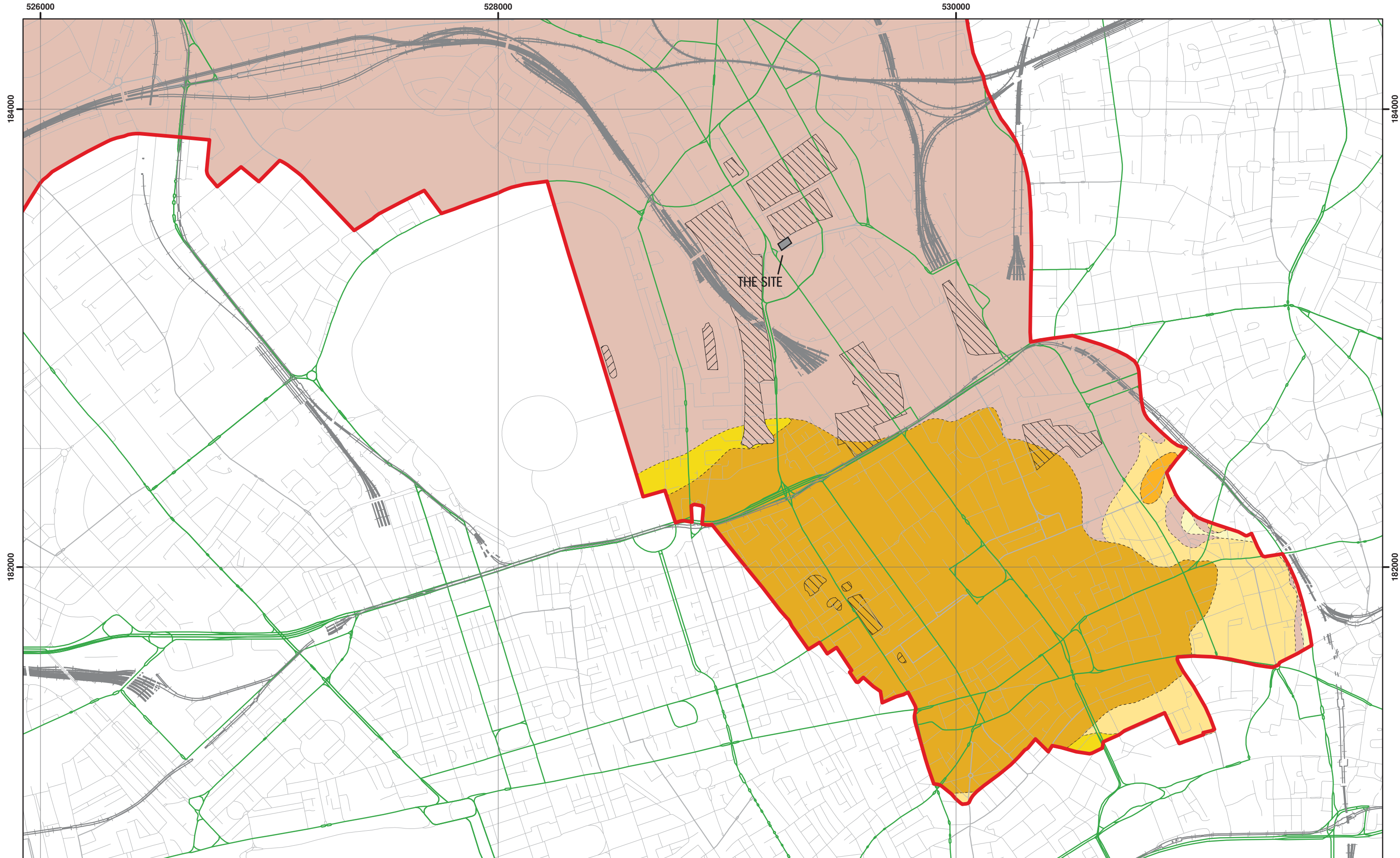
Fig 7

REVISION DATE / BY AMENDMENT

MADIGAN BROWNE

14 City Road, London, EC1Y 2AA
Telephone: 0207 036 6290
www.madiganbrowne.com

project title			
THE HOPE AND ANCHOR			
drawing title			
PROPOSED GROUND FLOOR PLAN			
status	PLANNING		
date	JANUARY 2014		
scale	1:100@A3		
job no	1087	drawing no	revision
drawn	NAA	P101	-
checked	AJB		



526000
Data source: BGS Mapping - Scale 1:10,000



Scale at A3: 1:15,000

Coordinate System:
British National Grid
GCS_OSGB_1936



528000
Legend

- London Borough of Camden
- Railway Lines
- A Roads

- BGS 1:10K Artificial Ground**
- MADE GROUND
 - WORKED GROUND

- BGS 1:10K Drift Geology**
- ALLUVIUM
 - HACKNEY GRAVEL FORMATION
 - LANGLEY SILT FORMATION
 - LYNCH HILL GRAVEL FORMATION
 - STANMORE GRAVEL FORMATION

- BGS 1:10K Solid Geology**
- BAGSHOT FORMATION
 - CLAYGATE MEMBER
 - LAMBETH GROUP
 - LONDON CLAY FORMATION

Report: J11708

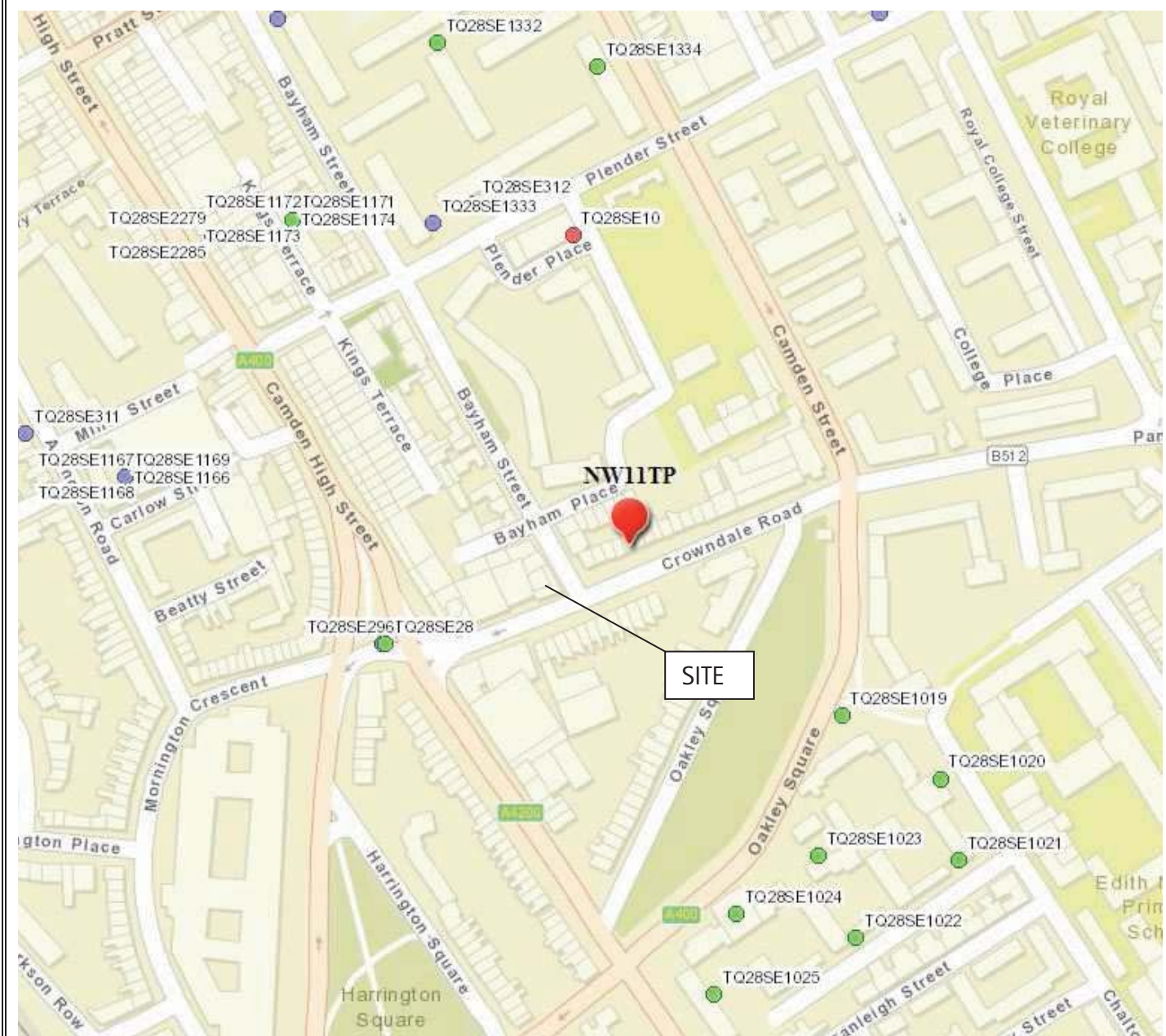
Figure: 8

Camden Geological, Hydrogeological and Hydrological Study

South Camden Geological Map

Site: Hope and Anchor Public House NW1 1TP

NB. Geological boundaries are largely indicative based on available geological mapping



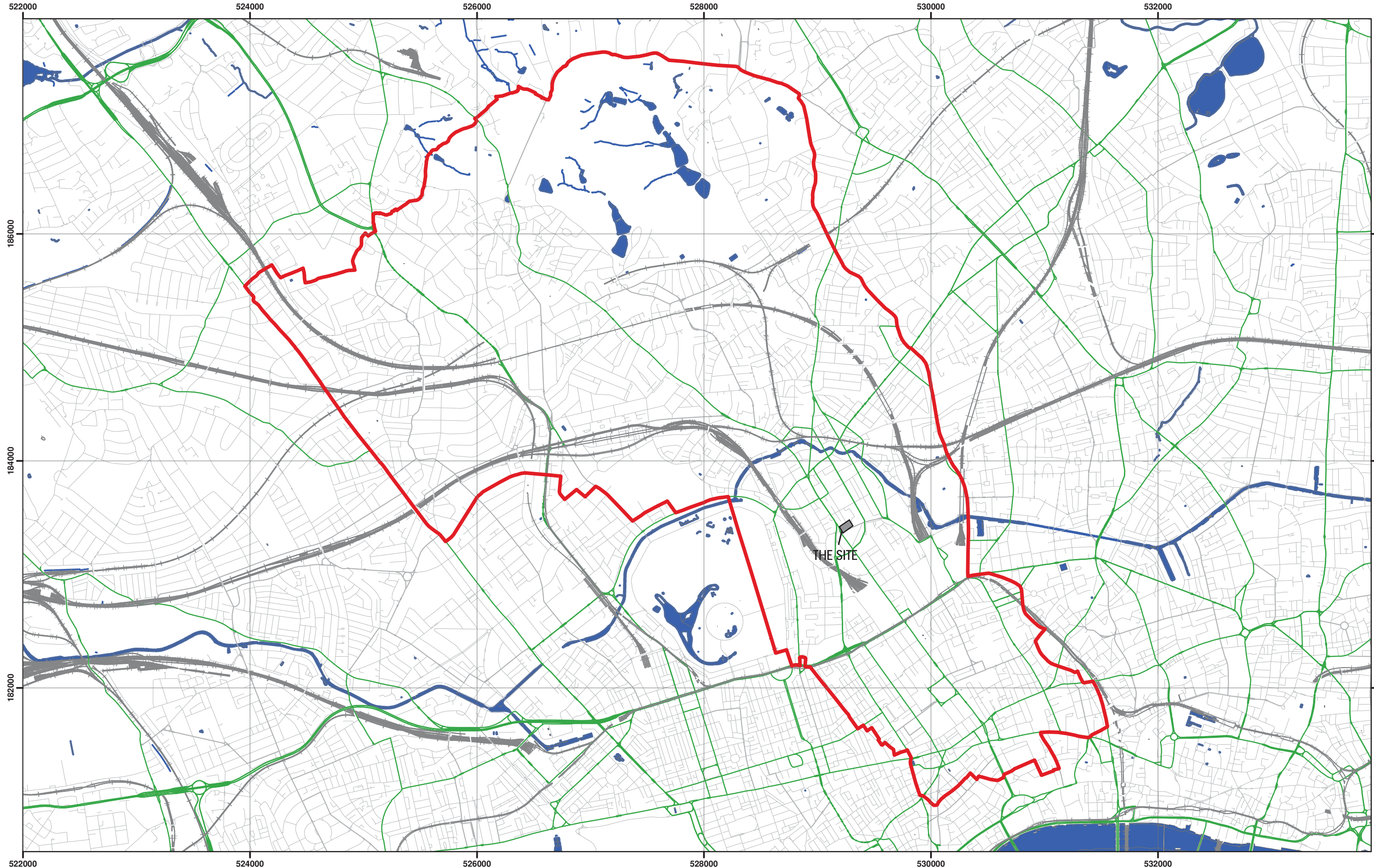
NB: Positions of Boreholes are only indicative unless dimensioned

Site:	Hope and Anchor Public House,	STL: J11708	Fig No: 9
Date:	17 March 2014	BGS Borehole Locations and other borehole data	

 Southern Testing

Southern Testing: Keeble House, Stuart Way, East Grinstead, West Sussex RH19 4QA
ST Consult: Twigden Barns, Brixworth Road, Creton, Northampton NN6 8NN

 ST Consult



Data Source: London Borough of Camden, 2010



Scale at A3: 1:30,000

Coordinate System:
British National Grid
GCS_OSGB_1936

Legend

- ▬ London Borough of Camden
- ▬ Surface water
- ▬ Railway Lines
- ▬ A Roads

Camden Geological, Hydrogeological and Hydrological Study

Camden Surface Water Features

Report: J11708
Figure: 10

Site: Hope and Anchor Public House, NW1 1TP



Date 18 February 2014
Our Ref 20878-SI-17-180214
Your Ref J11708
To Becky Coleman
Southern Testing
BColeman@southerntesting.co.uk



Hello Becky,

74 Crowndale Road London NW1 1TP

Thank you for your communication of 11th February 2014.

I can confirm that London Underground does not have any railway tunnels or infrastructure in the vicinity of your intended works as shown on the plan you provided.

However we do have cable ducts in the area. Should you or your client intend undertaking highway works at this location, please contact:

NRSWA Enquiries
UK Power Networks Services Powerlink
Drawing Office
Unit 7,
Bush Industrial Estate,
Station Road,
London,
N19 5UW

Tel: 0203 054 8354
Email: LULHVpowerassets@tfl.gov.uk

Should you have any further enquiries, please do not hesitate to contact me.

Shahina Inayathusein
Information Manager
LUL Infrastructure Protection
E-mail: locationenquiries@tube.tfl.gov.uk
Tel: 020 7918 0016

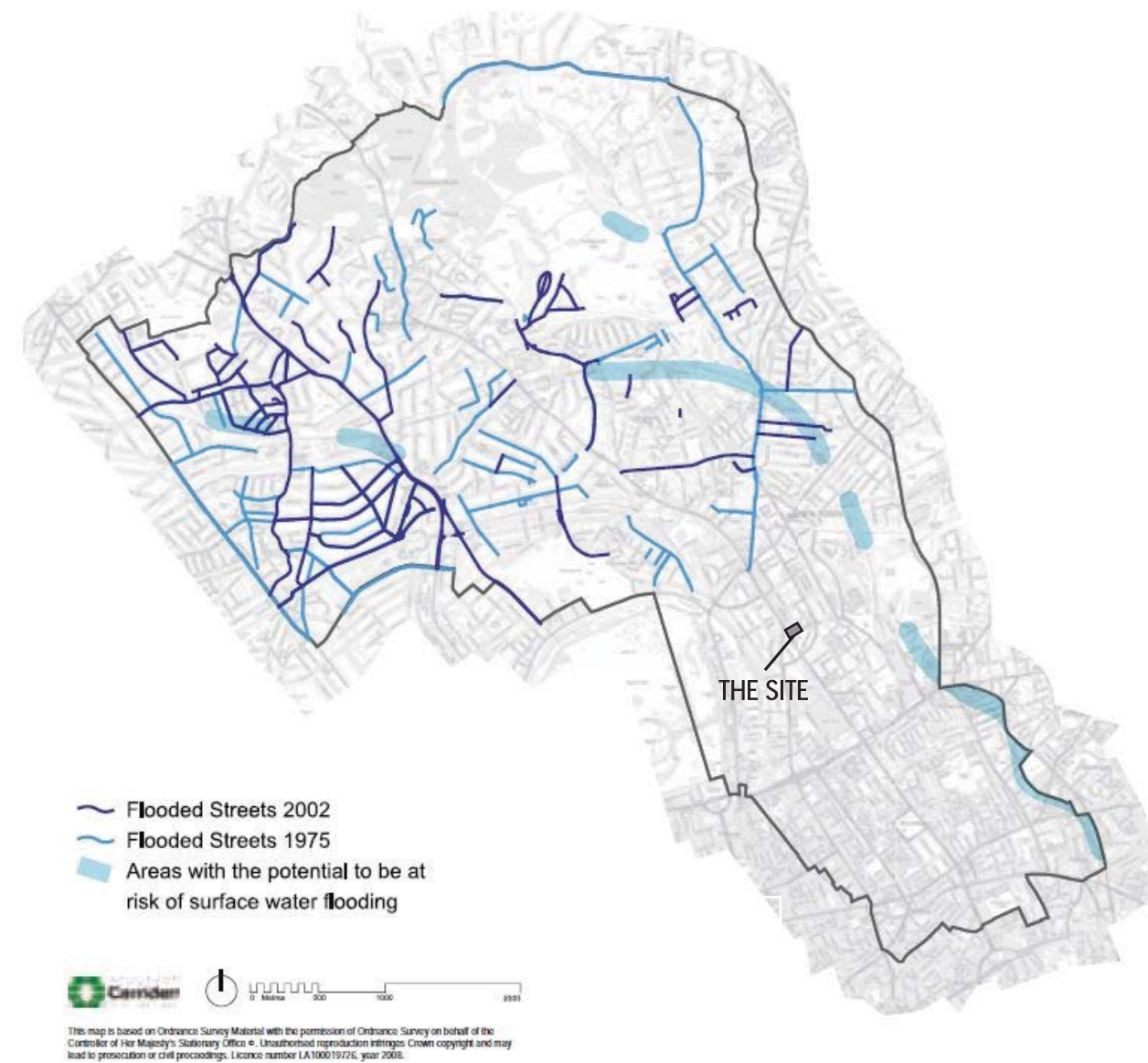
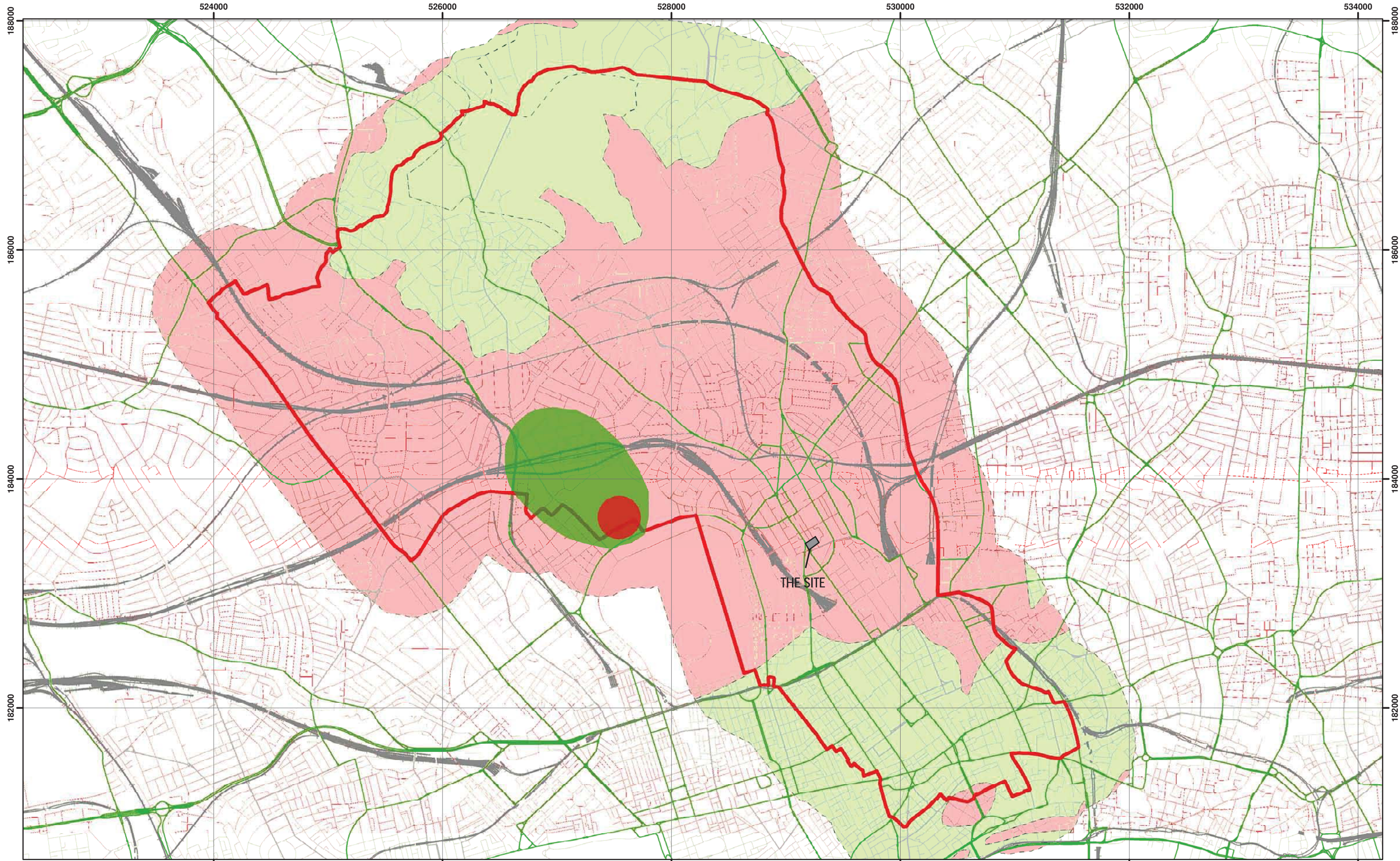


Figure 5 from Core Strategy, London Borough of Camden

Camden Geological, Hydrogeological and Hydrological Study Flood Map



Environment Agency Aquifer Designation based on BGS Mapping



Scale at A3: 1:30,000

Coordinate System:
British National Grid
GCS_OSGB_1936

Legend



Borough of Camden

Railway Lines

A Roads

Aquifer Designation

Secondary A Aquifer

Unproductive Strata

Source Protection Zone

Outer Source Protection Zone

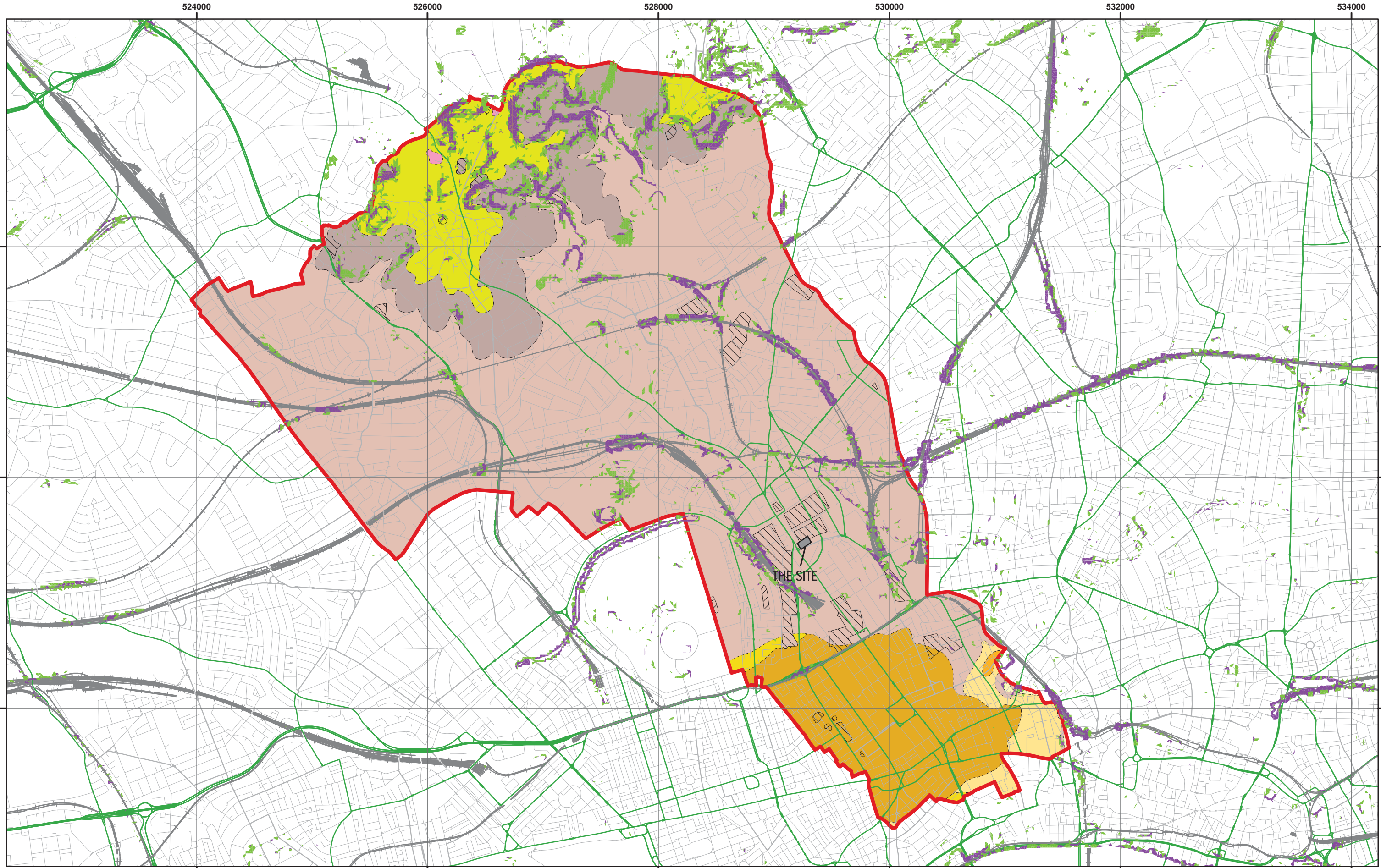
Inner Source Protection Zone

NB. Aquifer boundaries are indicative based on available geological mapping data

**Camden Geological, Hydrogeological
and Hydrological Study**
Camden Aquifer Designation Map

Report: J11708
Figure: 13

Site: Hope and Anchor Public House, NW1 1TP



Slope Angles calculated from Digital Terrain Model Provided By Camden Borough Council



Scale at A3: 1:30,000

1:10,000 BGS Mapping
Coordinate System:
British National Grid
GCS_OSGB_1936



Legend

Slope

- 0° - 7°
- 7° - 10°
- > 10°



London Borough of Camden



Railway Lines



A Roads



> 10°

BGS 1:10K Artificial Ground

- MADE GROUND
- WORKED GROUND

BGS 1:10K Drift Geology

- ALLUVIUM
- HACKNEY GRAVEL FORMATION
- LANGLEY SILT FORMATION
- LYNCH HILL GRAVEL FORMATION
- STANMORE GRAVEL FORMATION

BGS 1:10K Solid Geology

- BAGSHOT FORMATION
- CLAYGATE MEMBER
- LAMBETH GROUP
- LONDON CLAY FORMATION

NB. Geological boundaries are largely indicative based on available geological mapping

Camden Geological, Hydrogeological and Hydrological Study

Slope Angle Map

Report: J11708

Site: Hope and Anchor Public House, NW 1 11P

Figure: 14