

103 Camley Street

Condition 3c - Gates

Executive summary

The following report forms our formal submission for partial discharge of condition 3c - Gates, for the referred Planning Permission - 2011/5695/P approved on 30 March 2012.

We have been in discussion with Neil McDonald the principle planning officer & attended site with Kevin Fisher a design advisor. Please note all other parts of condition 3c have been approved and discharged.

Document Control

Job Title: 103 Camley Street
Job number: 10019
Report title: Condition 3c - Gates
Report number: REP-26
Revision: -
Date of issue: April 2014
Purpose of issue: Issued for Approval
Compiled by: Kevin Hong - AHMM Architects
Reviewed by: Keval Patel - AHMM Architects
Date reviewed: April 2014
**File name/
location** I:\10019 103 Camley Street\5.0
Reports\xxxxxx_PLANNING S106
CONDITIONS SUBMISSIONS\
condition 3c_gates

Contents

1.0 Typical Gate Design Approach

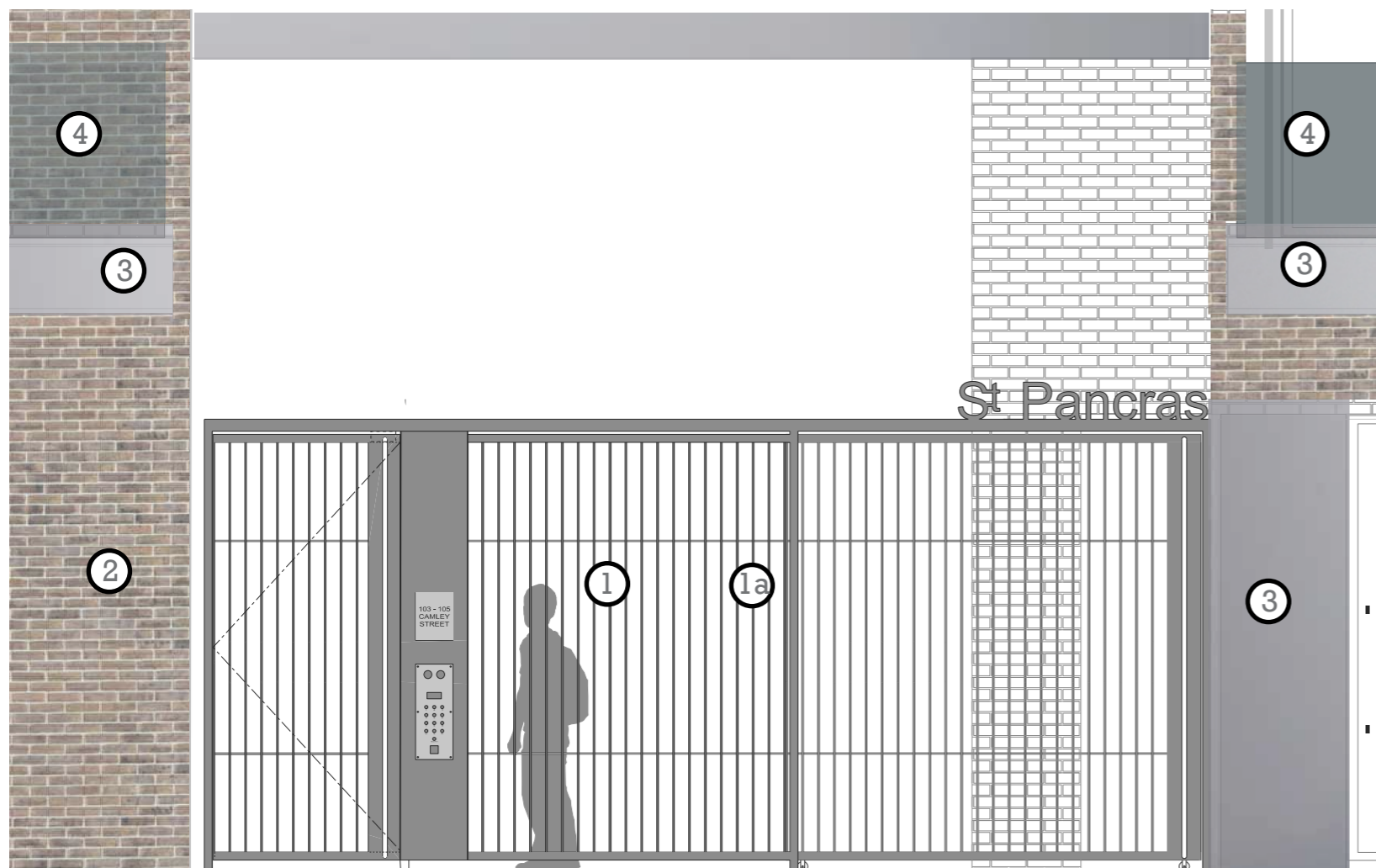
2.0 Gate Locations

3.0 Gate Drawings

1.0 Typical Gate Design Approach

The proposed window finishes are ppc aluminium frame system with aluminium ventilation grilles. There are varying configurations which can be viewed in complete form in the Appendices

- ① PPC metal Gate
- ② brick
- ③ PPC aluminium cladding
- ④ glass baustrading at balconies
- ①a PPC entry access panel



Elevation of Student Entrance Gate

Precedents

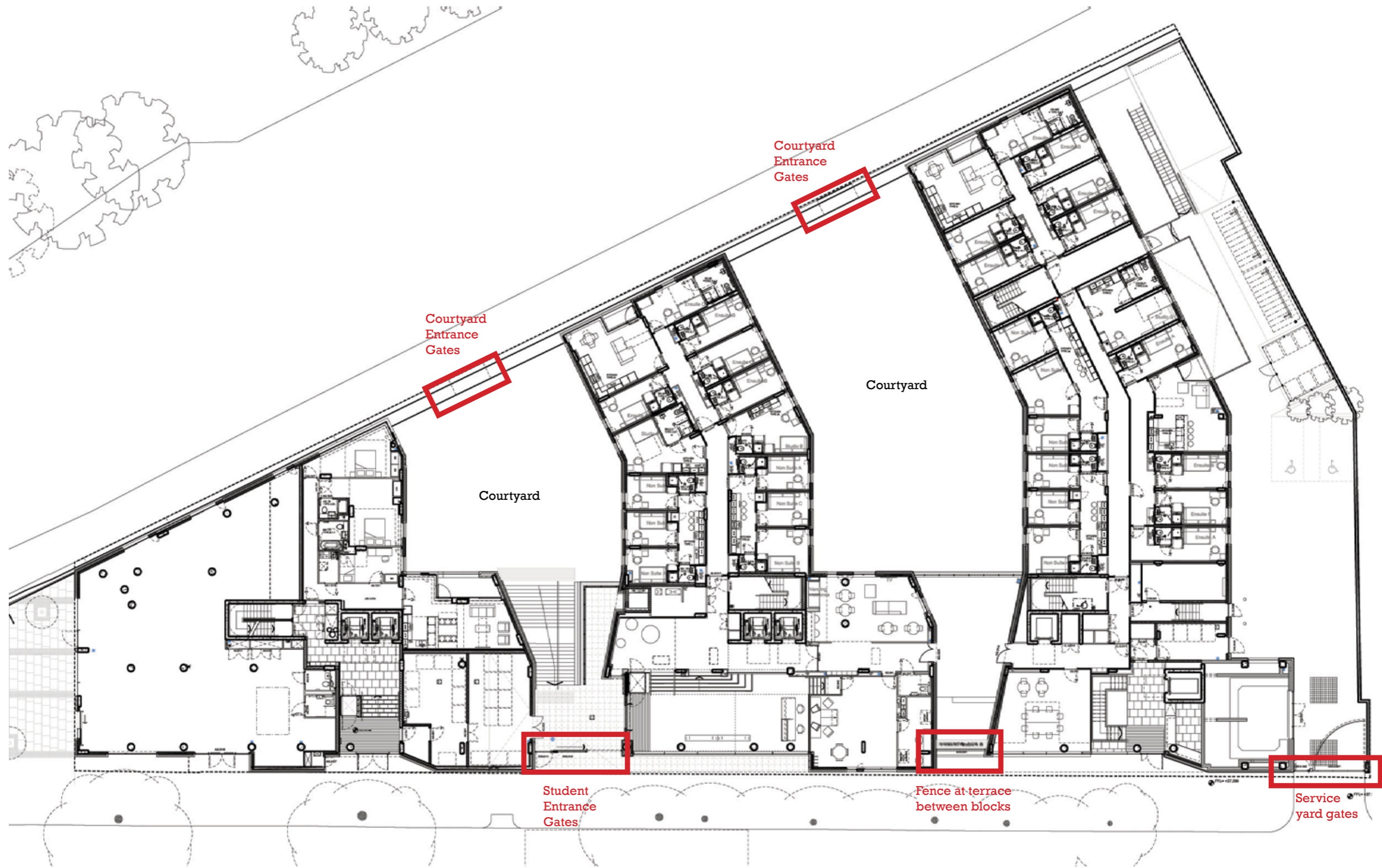


Polyester powder coated metal flat bar balustrading - AHMM



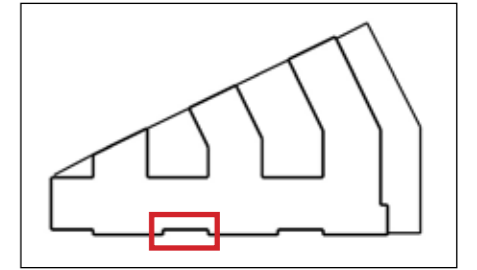
Polyester powder coated metal flat bar entrance gate- AHMM

2.0 Gate Locations Reference Plan

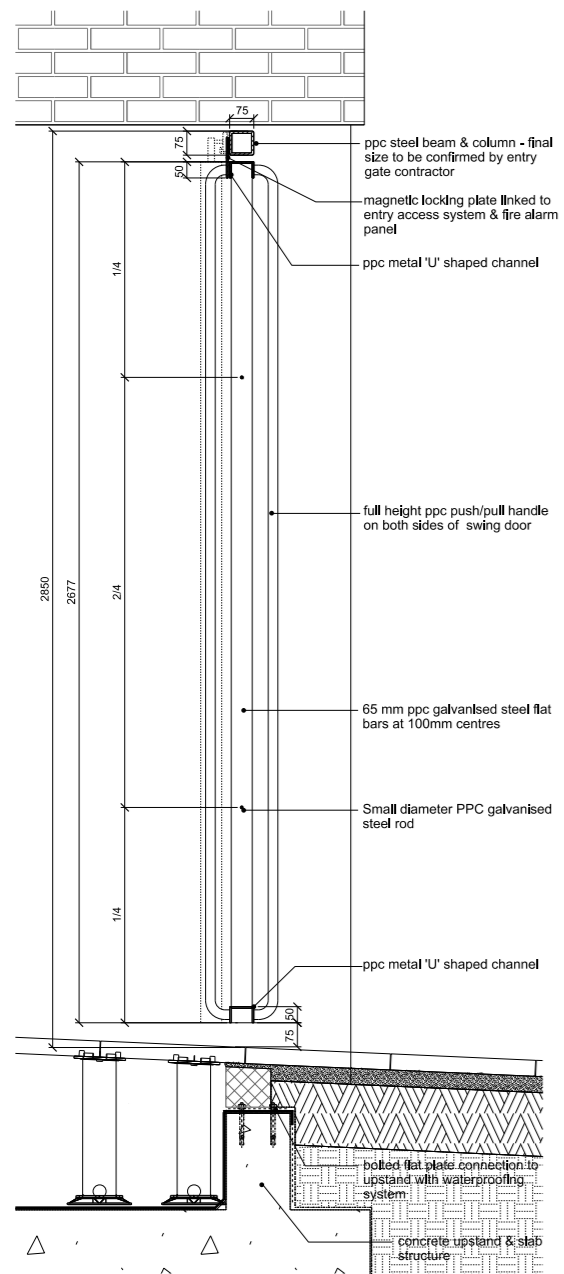


3.0 Gates

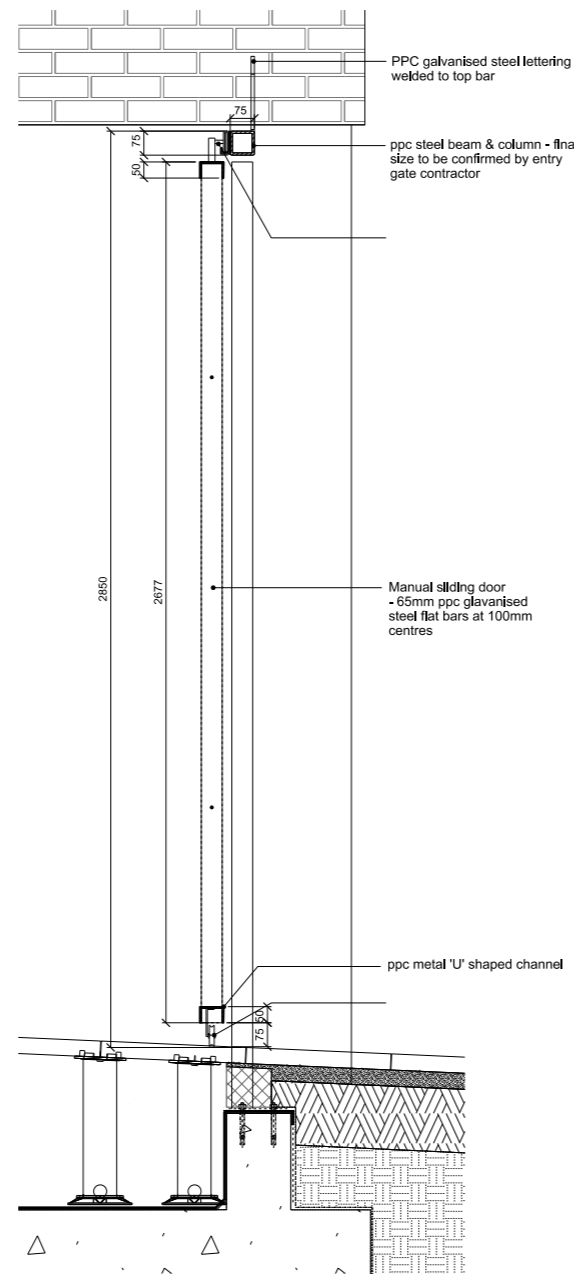
Student Entrance Gate



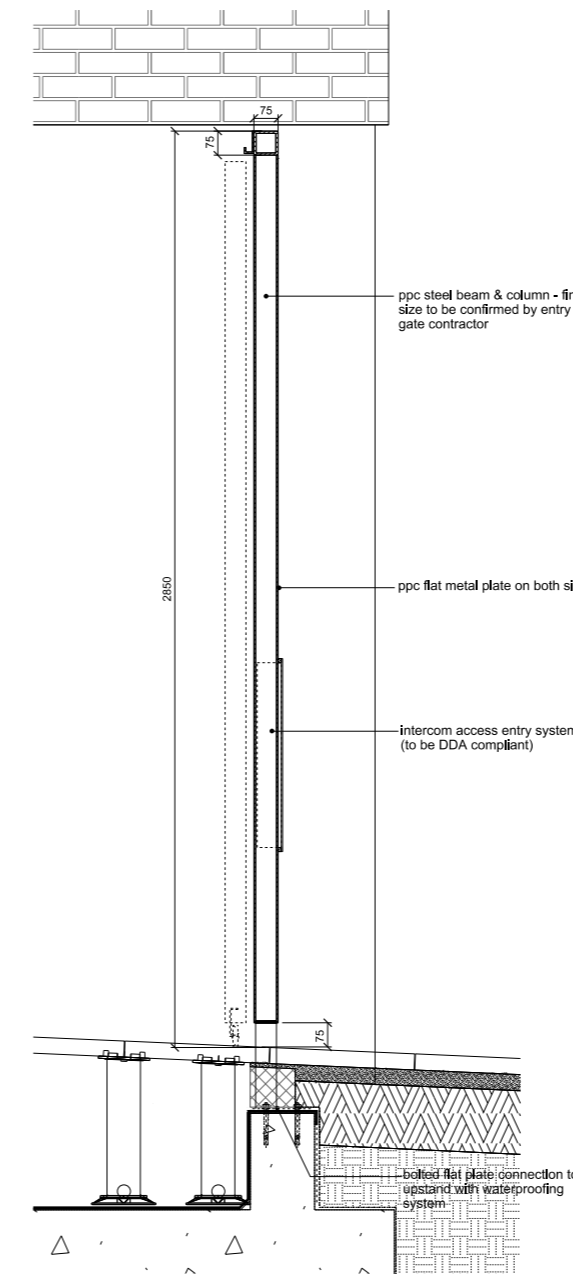
Key



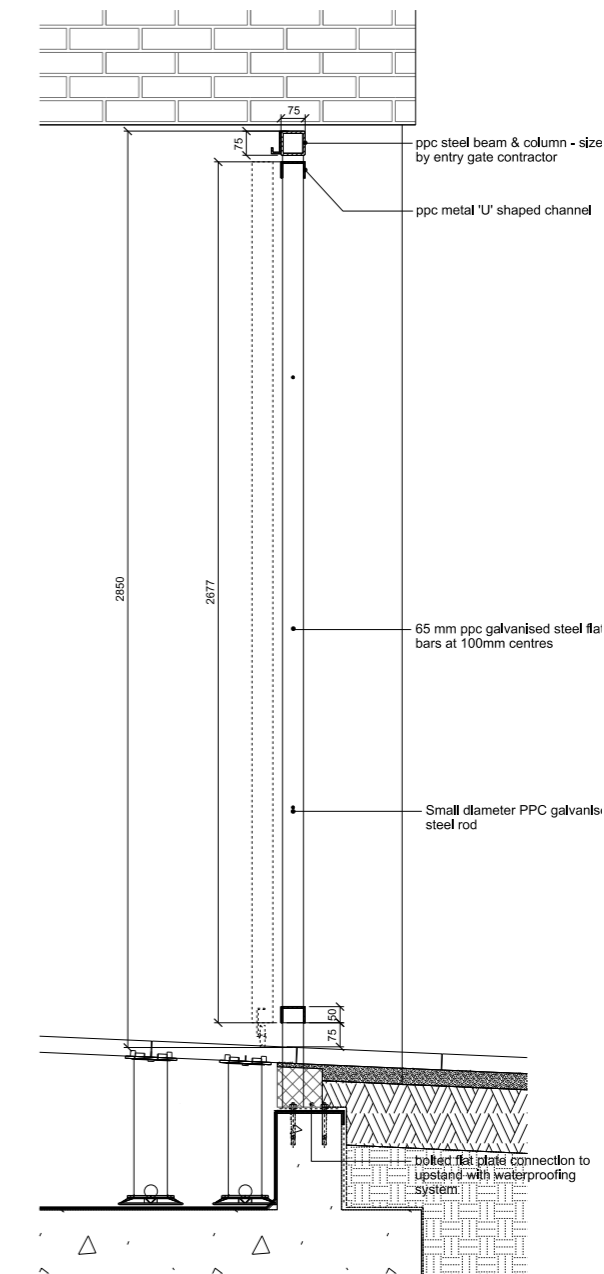
1 Section through swing door



2 Section through sliding door



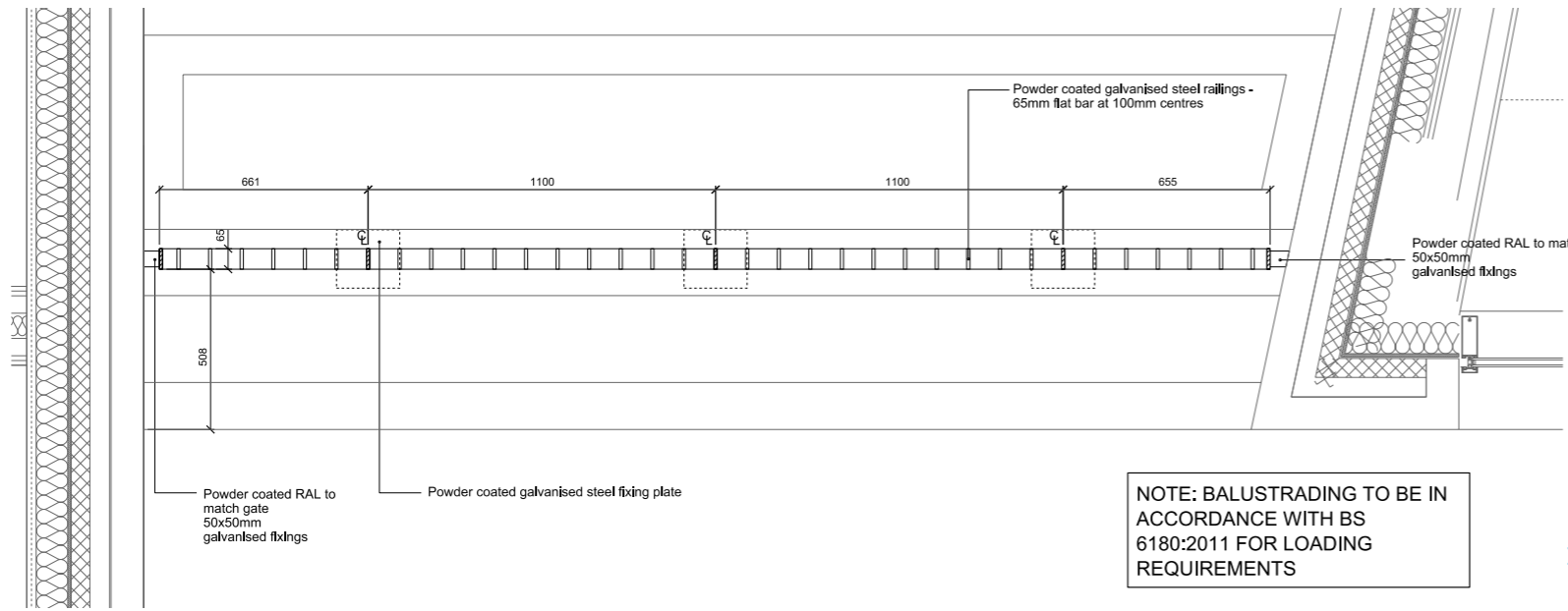
3 Section through Intercom panel



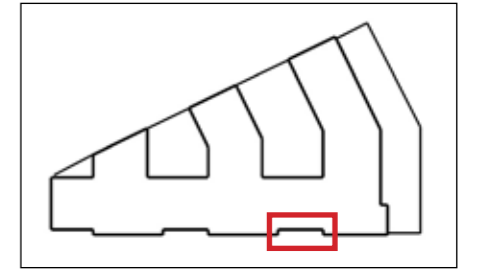
4 Section through fixed panel

3.0 Gates

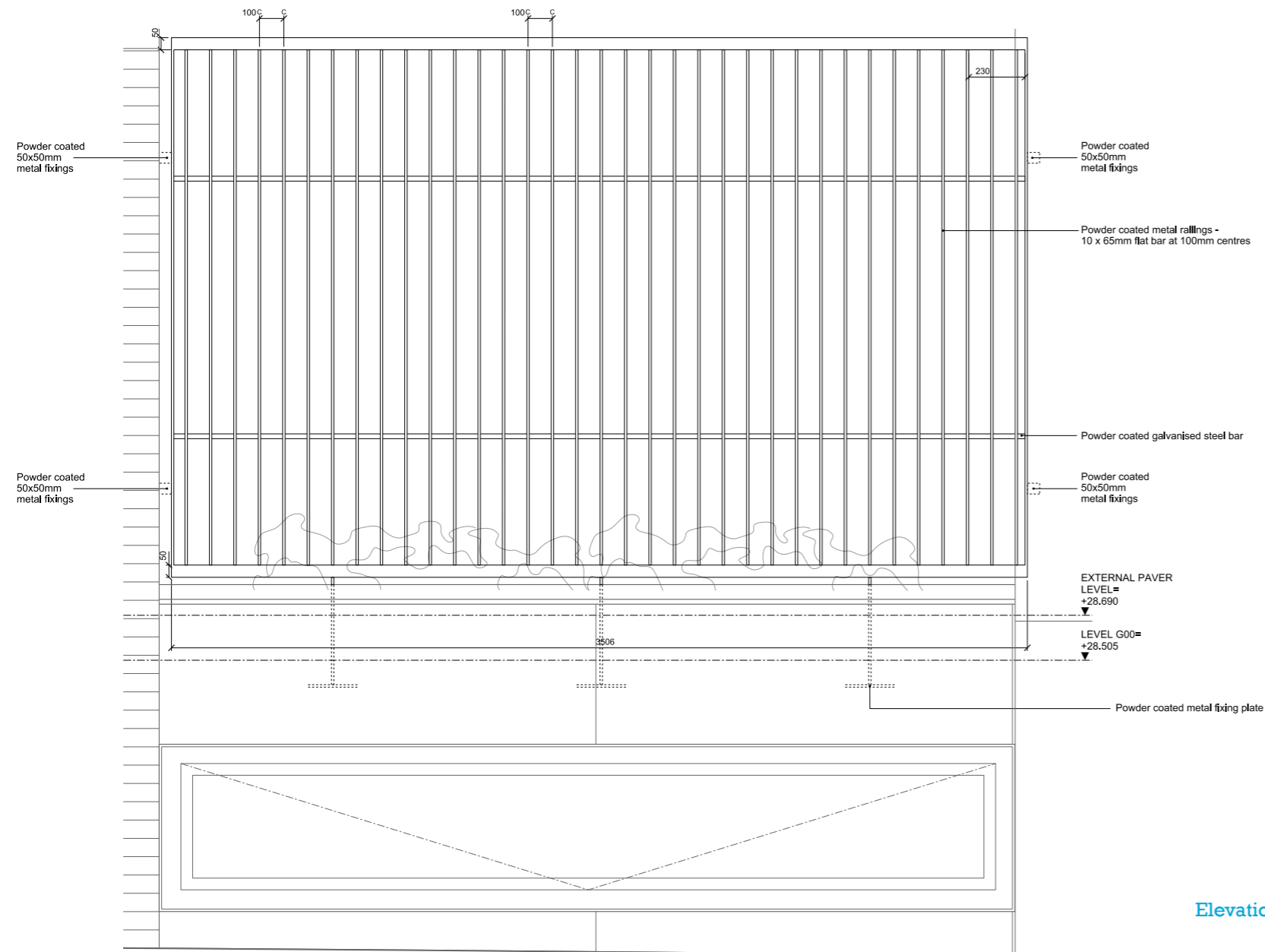
Fence between blocks B & C Gate



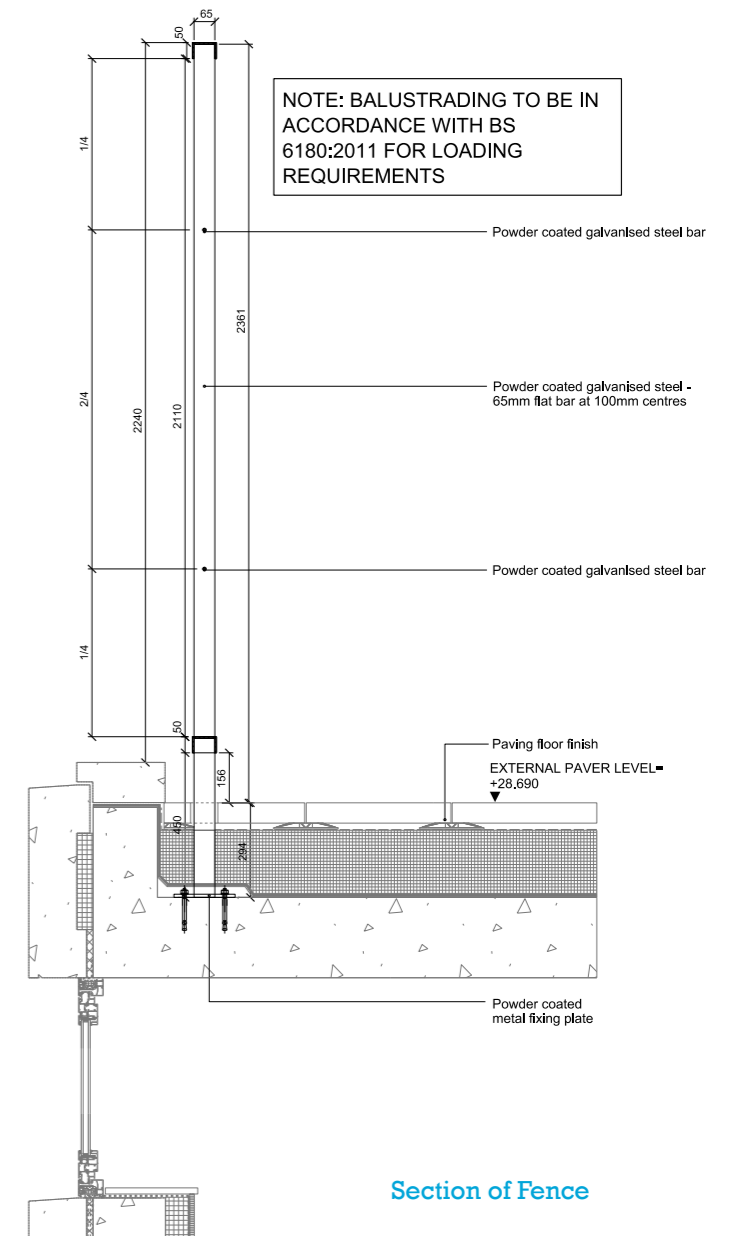
Plan of Fence



Key



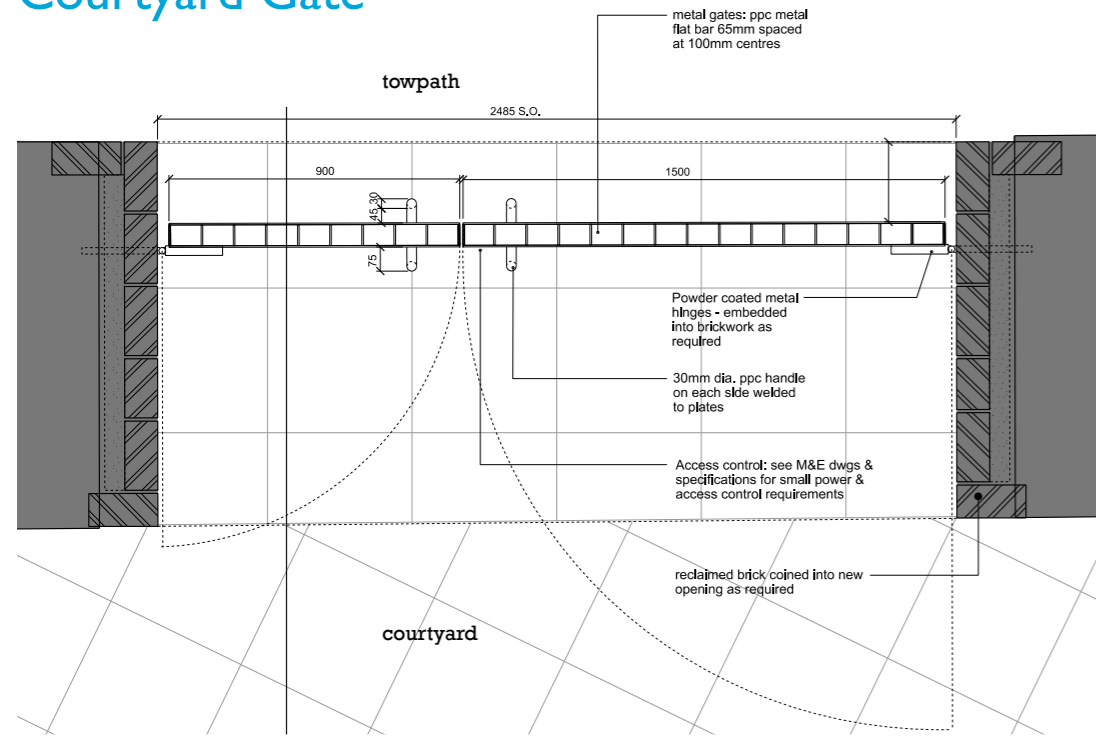
Elevation of Fence



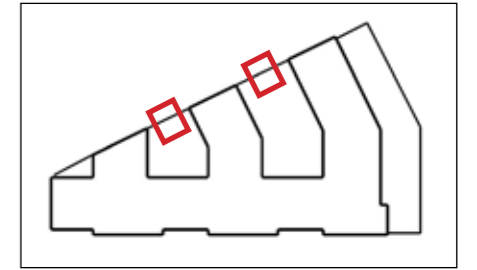
Section of Fence

3.0 Gates

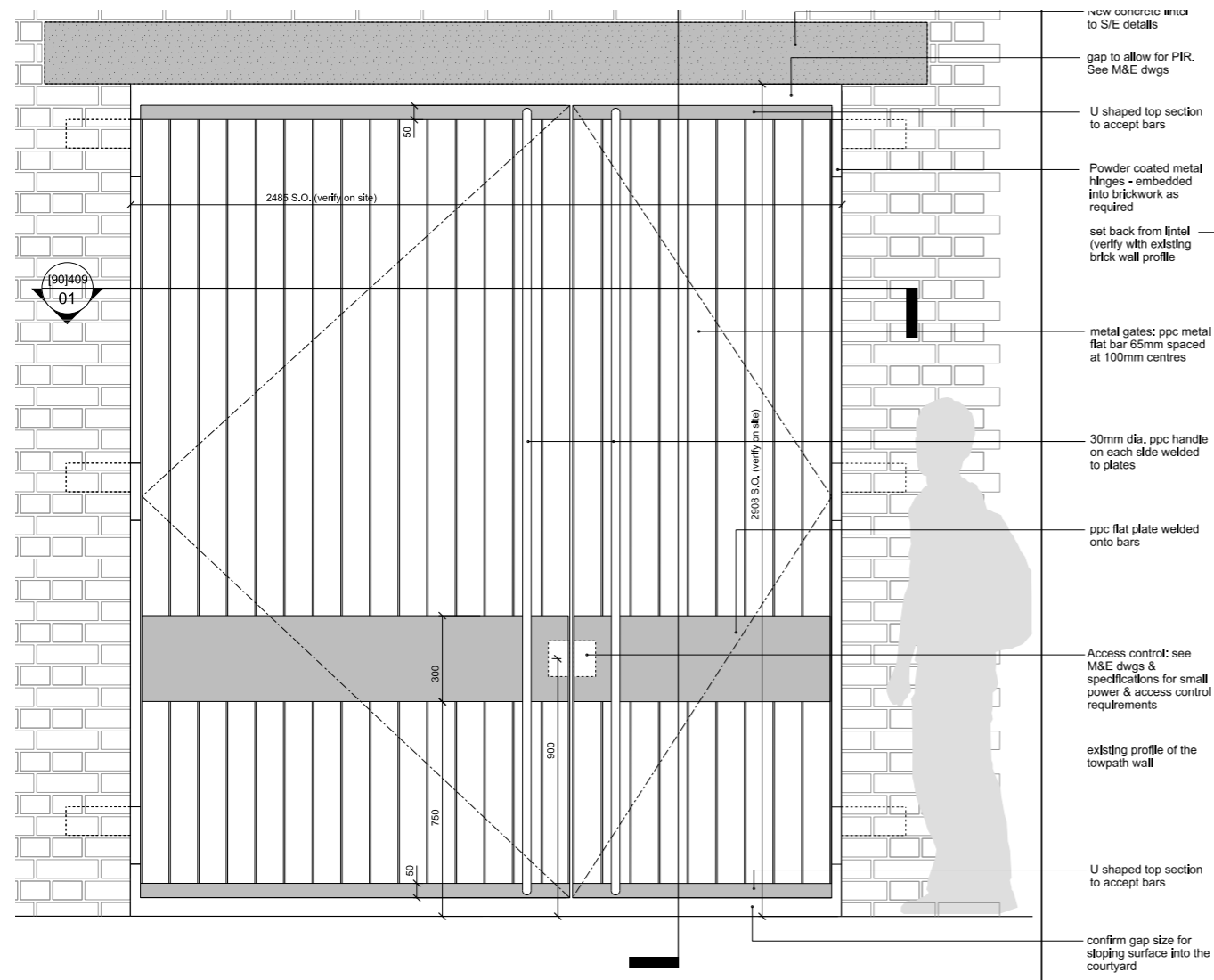
Courtyard Gate



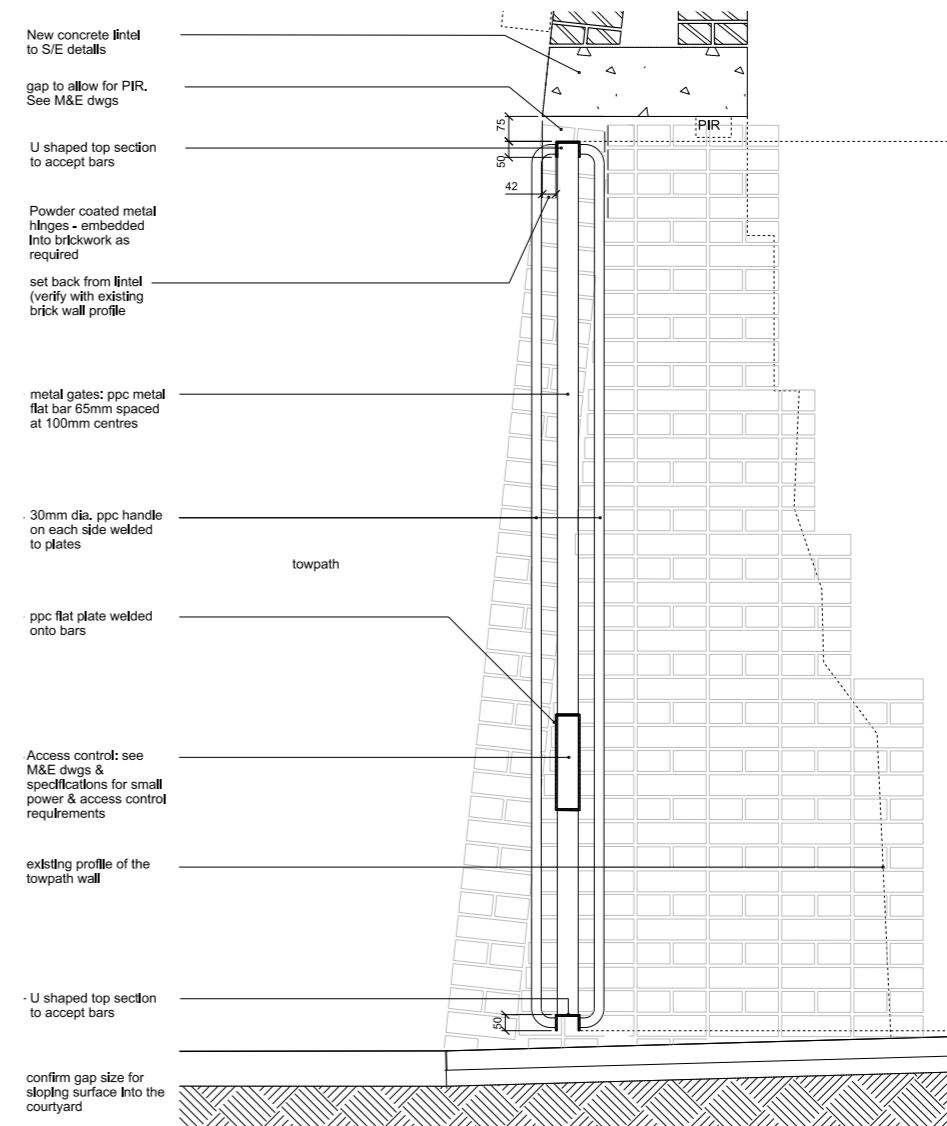
Plan of Gate



Key



Elevation of Gate



Section of Gate