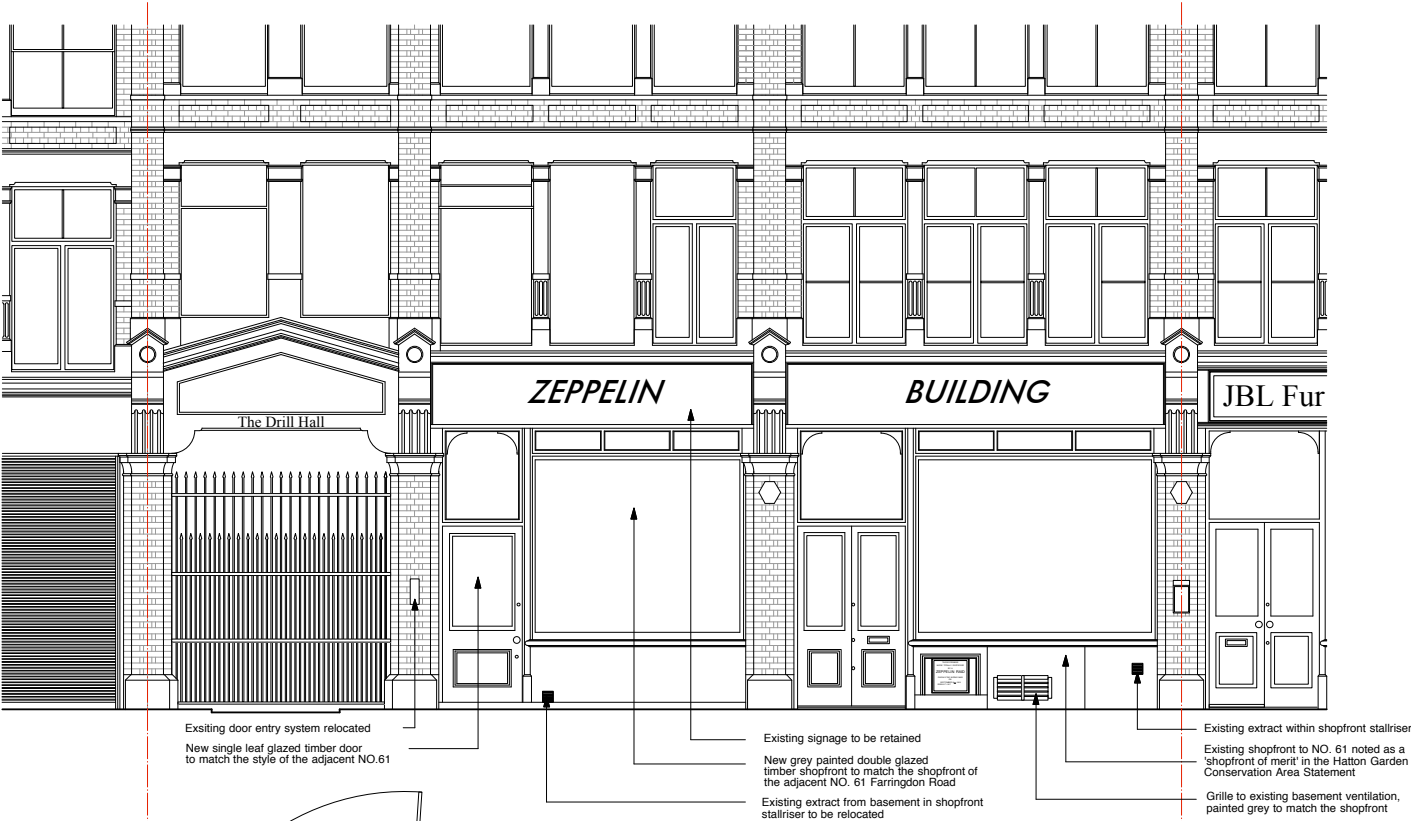
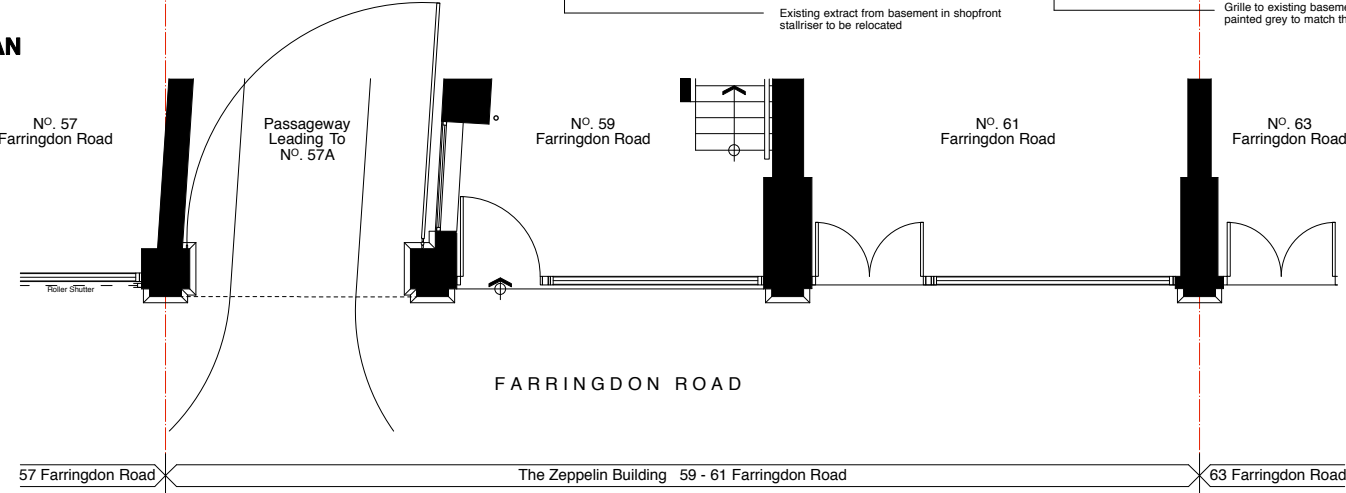


APPROVED
ELEVATION



Approved proposals as per March 2013
planning application 2013/1653/P

APPROVED PLAN



0 1m 2m 3m 4m 5m

APPROVED SHOPFRONT PLAN & ELEVATION

rev.	date	notes
© gpad ltd.		
gpad architecture & interior design		
CLIENT KENRUGHT PROPERTIES LTD		
PROJECT ZEPPELIN BUILDING 59-61 FARRINGTON ROAD LONDON EC1M 3JB		
TITLE APPROVED SHOPFRONT PLAN & ELEVATION		
DWG NO	398B-PA.07	REV
DRAWN BY	J.W	SCALE 1:50@A2
CHECKED BY		DATE April 2014
T: 020 7549 2133 F: 020 7549 2144 E: info@gpadltd.com W: www.gpadltd.com		
Unit 1 9a Dollington Street Clerkenwell London EC1V 0BQ		
This drawing is the copyright of gpad ltd. Not to be reproduced, retained or disclosed to any unauthorised person either wholly or in part without written permission. Do not scale the drawing. All indicated dimensions to be checked and verified on site by the contractor before commencement of any fabrication drawings or work whatsoever on site. Report any discrepancies to the Architect immediately. Drawings to be read in conjunction with relevant drawings and specification.		
FILE NAME	PRINT SIZE	A2