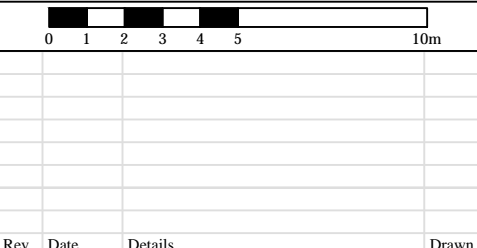


LEGEND

- A CATEGORY TREE**
Trees of high quality with an estimated life expectancy of at least 40 years
- B CATEGORY TREE**
Trees of moderate quality with an estimated remaining life expectancy of at least 20 years
- C CATEGORY TREE**
Trees of low quality with an estimated remaining life expectancy of at least 10 years, or young trees with a stem diameter below 150 mm
- U CATEGORY TREE**
Those in such a condition that they cannot realistically be retained as living tree in the context of the current land use for longer than 10 years
- ROOT PROTECTION AREA (RPA) FOR A & B CATEGORY TREES**
- RPA FOR C CATEGORY TREES**

NOTE:
FOR PLANNING PURPOSES ONLY
DO NOT SCALE FROM DRAWING



ACD
Ecology
Arboriculture
Landscape Architecture

- Rodbourne Rail Business Centre, Grange Lane, Malmesbury, Wilts, SN16 0ES
Tel: 01666 825646 Fax: 01666 824654
- Courtyard House, Mill Lane Godalming, Surrey, GU7 1EY
Tel: 01483 425714
- 12 Southgate Street, Winchester, Hampshire, SO23 9EF
Tel: 01962 855604

www.acdlandscape.co.uk

Copyright of ACD. All rights described in Chapter IV of the Copyright, Designs and Patents Act 1988 have been generally asserted: 2011. Copyright of this plan remains with ACD until all fees have been paid in full.

scheme: 51-53 Agar Grove, London, NW1 9UE
client: 3PM
drawing: Tree Reference Plan
date: 08.01.2014
scale: 1:200@A3
dwg no: PRI18839-01
drawn: TRG checked: MW