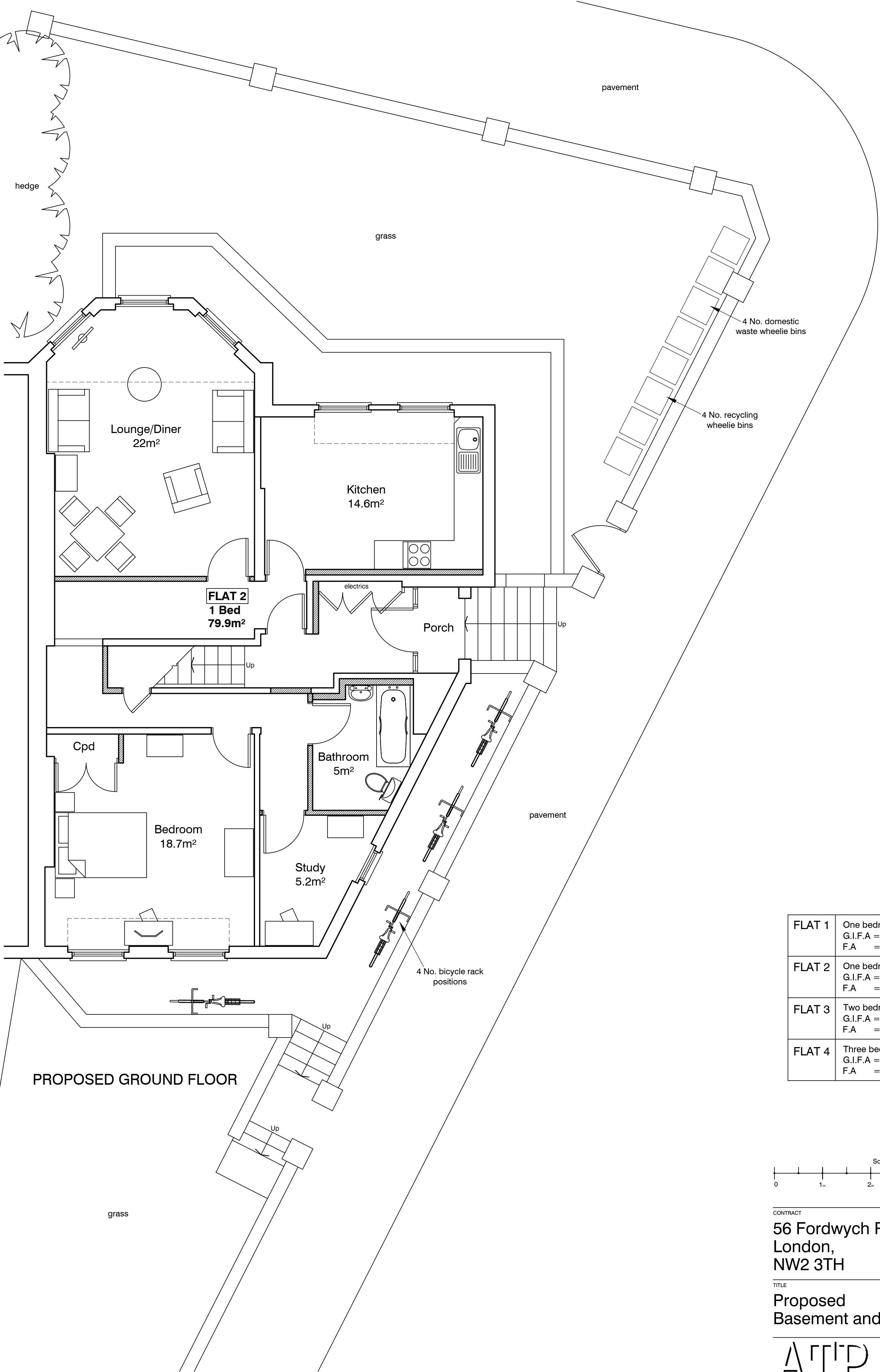


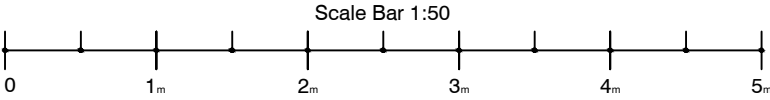
PROPOSED BASEMENT FLOOR



PROPOSED GROUND FLOOR

DO NOT SCALE REPORT ERRORS AND OMISSIONS TO THE ARCHITECT CHECK ALL DIMENSIONS BEFORE FABRICATION			
REVISION	DRAWN	CHKD	DATE
-	-	-	-/-/-

FLAT 1	One bedroom two person flat. G.I.F.A = 90.1m² F.A = 86.1m²
FLAT 2	One bedroom two person flat. G.I.F.A = 81.7m² F.A = 79.9m²
FLAT 3	Two bedroom three person flat. G.I.F.A = 86.5m² F.A = 84.2m²
FLAT 4	Three bedroom five person flat. G.I.F.A = 110.95m² F.A = 104.04m²



CONTRACT		SCALE	
56 Fordwych Road, London, NW2 3TH		1:50 @A1	
DATE		March 2014	
DRAWN		BJF	
CHECKED		DF	
TITLE		DRAWING No	
Proposed Basement and Ground Floor Plans		14104_03	
		REVISION	