

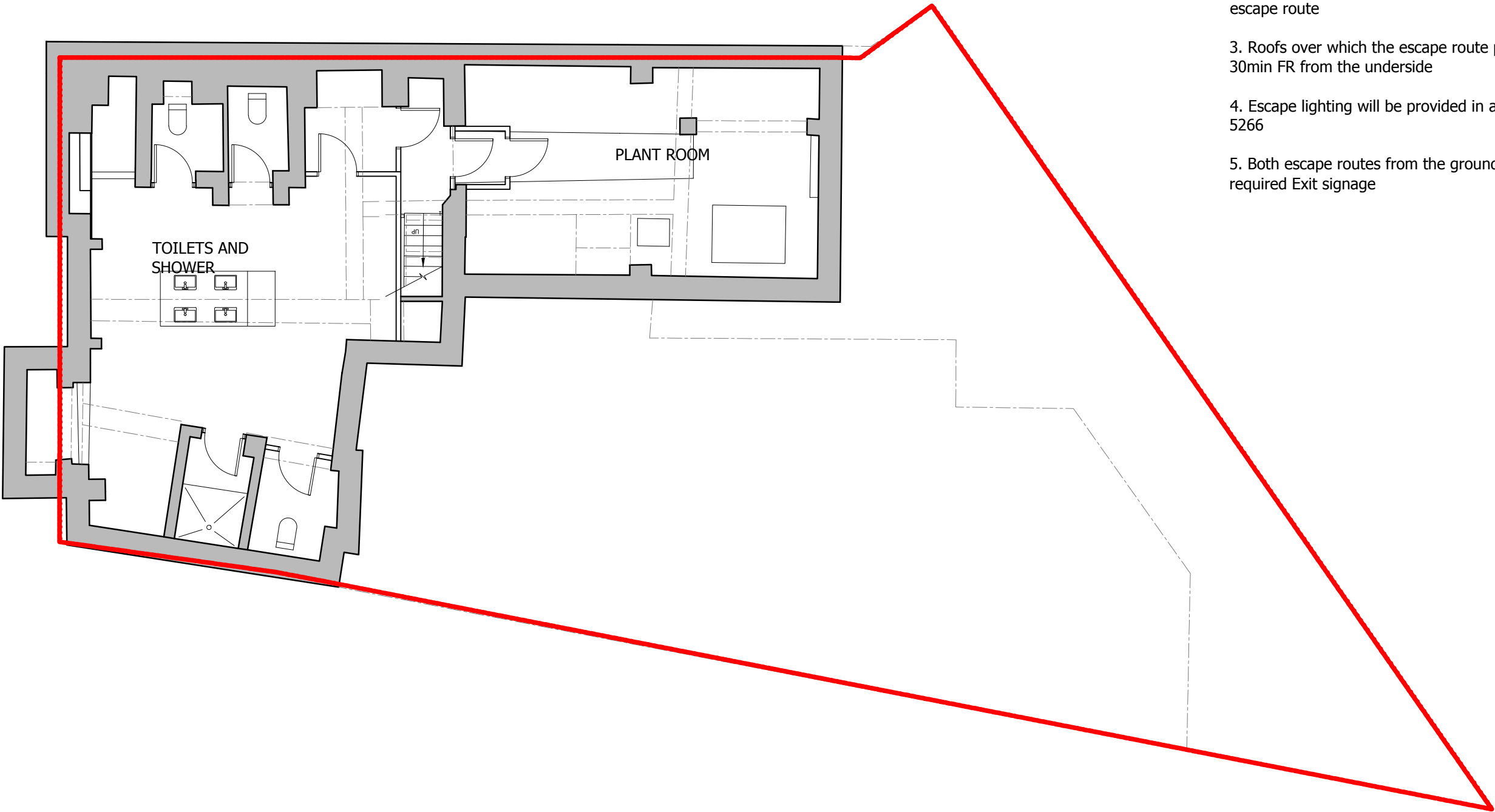
NOTE:

1. The building will be covered by an L1 Automatic Fire Detection and Alarm system
2. There will be no unprotected areas within 1.8m of the escape route
3. Roofs over which the escape route passes has at least 30min FR from the underside
4. Escape lighting will be provided in accordance with BS 5266
5. Both escape routes from the ground floor will have the required Exit signage

PROPOSED L04 PLANS (SECOND FLOOR)

1:100

DO NOT SCALE	REV	DATE	DRN	CHK	DESCRIPTION	REV	DATE	DRN	CHK	DESCRIPTION	SCALE 1:100	SIZE A3	DATE 26 FEB 14	846	THREE SIX SIX Proposed GA - Level 04 Plan
DESIGN INTENT INFORMATION															
STRUCTURE, FRAMING & SUPPORT INDICATIVE															
M&E SERVICES INDICATIVE															
											DRAWN SN	CHECKED MB	REV 00	STATUS CODE 3	STATUS PLANNING
											846-HS-XX-L4-DR-A-GP-1104				
											Web: <a href="http://www.Heatherwick.com">http://www.Heatherwick.com</a> Email: <a href="mailto:studio@Heatherwick.com">studio@Heatherwick.com</a>				
											356 - 364 Gray's Inn Road London tel: +44 (0)20 7833 8800 fax: +44(0)20 7833 8400				
© COPYRIGHT : Heatherwick Studio											Heatherwick studio				

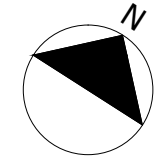


NOTE:

- 1. The building will be covered by an L1 Automatic Fire Detection and Alarm system
- 2. There will be no unprotected areas within 1.8m of the escape route
- 3. Roofs over which the escape route passes has at least 30min FR from the underside
- 4. Escape lighting will be provided in accordance with BS 5266
- 5. Both escape routes from the ground floor will have the required Exit signage

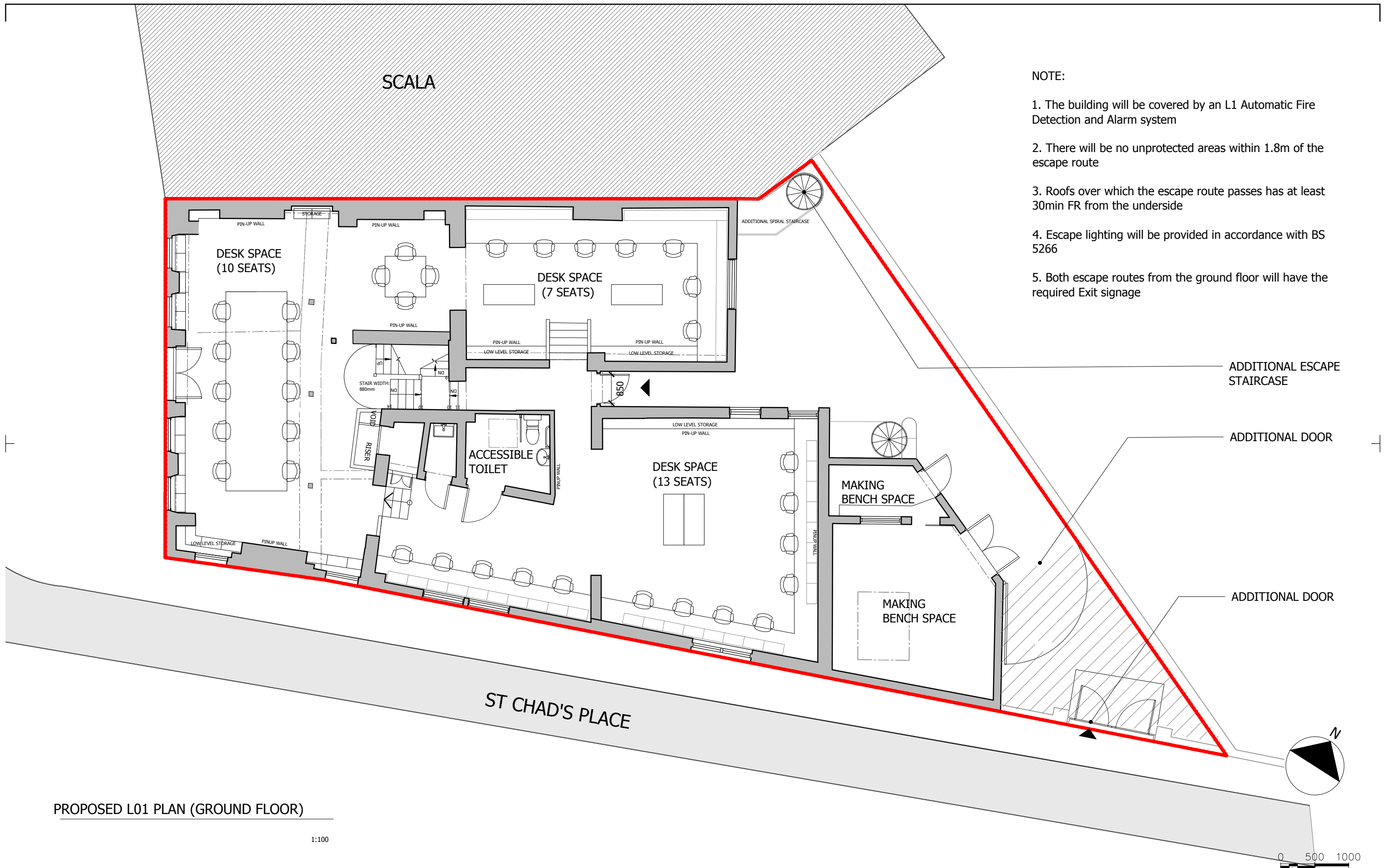
PROPOSED BASEMENT PLANS

1:100



0 500 1000

DO NOT SCALE	REV	DATE	DRN	CHK	DESCRIPTION	REV	DATE	DRN	CHK	DESCRIPTION	SCALE 1:100	SIZE A3	DATE 26 FEB 14	846	THREE SIX SIX Proposed GA - Basement Plan
DESIGN INTENT INFORMATION															
STRUCTURE, FRAMING & SUPPORT INDICATIVE															
M&E SERVICES INDICATIVE															
											DRAWN SN	CHECKED MB	REV 00	STATUS CODE 3	STATUS PLANNING
											Web: <a href="http://www.Heatherwick.com">http://www.Heatherwick.com</a> Email: <a href="mailto:studio@Heatherwick.com">studio@Heatherwick.com</a>				
© COPYRIGHT : Heatherwick Studio											356 - 364 Gray's Inn Road London tel: +44 (0)20 7833 8800 fax: +44(0)20 7833 8400				



- NOTE:
1. The building will be covered by an L1 Automatic Fire Detection and Alarm system
  2. There will be no unprotected areas within 1.8m of the escape route
  3. Roofs over which the escape route passes has at least 30min FR from the underside
  4. Escape lighting will be provided in accordance with BS 5266
  5. Both escape routes from the ground floor will have the required Exit signage

ADDITIONAL ESCAPE STAIRCASE

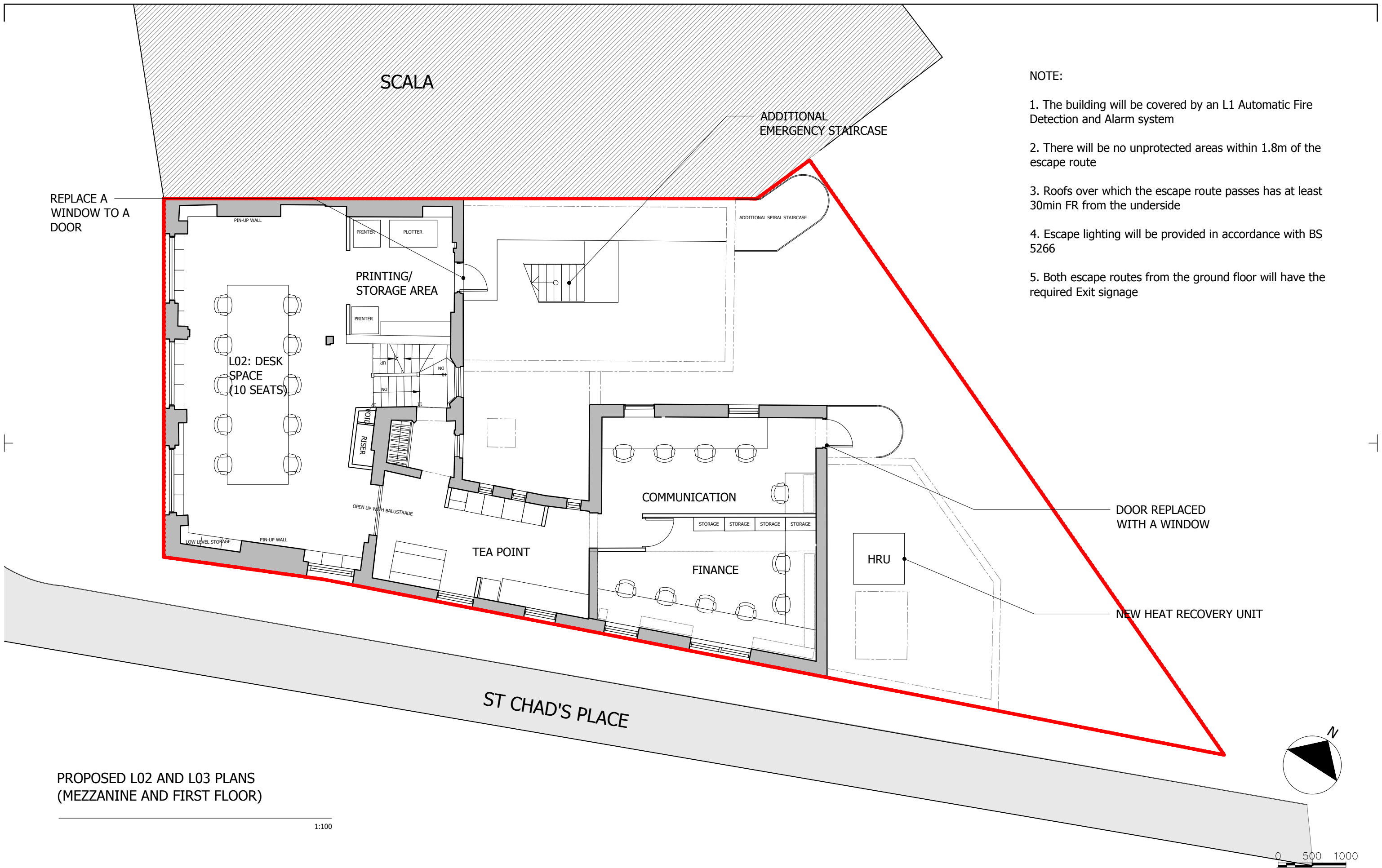
ADDITIONAL DOOR

ADDITIONAL DOOR

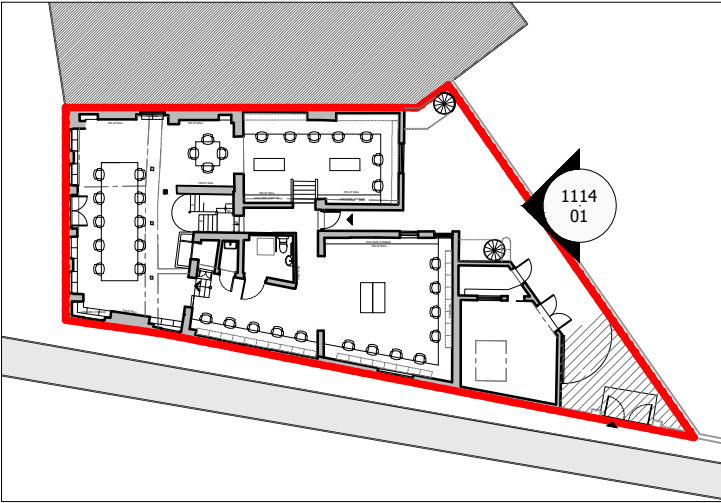
PROPOSED L01 PLAN (GROUND FLOOR)

1:100

DO NOT SCALE	REV	DATE	DRN	CHK	DESCRIPTION	REV	DATE	DRN	CHK	DESCRIPTION	SCALE 1:100	SIZE A3	DATE 26 FEB 14	846	THREE SIX SIX Proposed GA - Level 01 Plan
DESIGN INTENT INFORMATION															
STRUCTURE, FRAMING & SUPPORT INDICATIVE															
M&E SERVICES INDICATIVE															
											DRAWN SN	CHECKED MB	REV 00	STATUS CODE 3	STATUS PLANNING
											846-HS-XX-L1-DR-A-GP-1102				
											Web: <a href="http://www.Heatherwick.com">http://www.Heatherwick.com</a> Email: <a href="mailto:studio@Heatherwick.com">studio@Heatherwick.com</a>				
											356 - 364 Gray's Inn Road London tel: +44 (0)20 7833 8800 fax: +44(0)20 7833 8400				
© COPYRIGHT : Heatherwick Studio											Heatherwick studio				



DO NOT SCALE	REV	DATE	DRN	CHK	DESCRIPTION	REV	DATE	DRN	CHK	DESCRIPTION	SCALE 1:100	SIZE A3	DATE 26 FEB 14	846	THREE SIX SIX Proposed GA - Level 02 Plan
DESIGN INTENT INFORMATION															
STRUCTURE, FRAMING & SUPPORT INDICATIVE															
M&E SERVICES INDICATIVE															
											DRAWN SN	CHECKED MB	REV 00	STATUS CODE 3	STATUS PLANNING
											846-HS-XX-L2-DR-A-GP-1103				
											Web: <a href="http://www.Heatherwick.com">http://www.Heatherwick.com</a> Email: <a href="mailto:studio@Heatherwick.com">studio@Heatherwick.com</a>				
											356 - 364 Gray's Inn Road London tel: +44 (0)20 7833 8800 fax: +44(0)20 7833 8400				
© COPYRIGHT : Heatherwick Studio											Heatherwick studio				



KEY PLAN

NTS



1114  
01  
PROPOSED NORTH-EAST ELEVATION

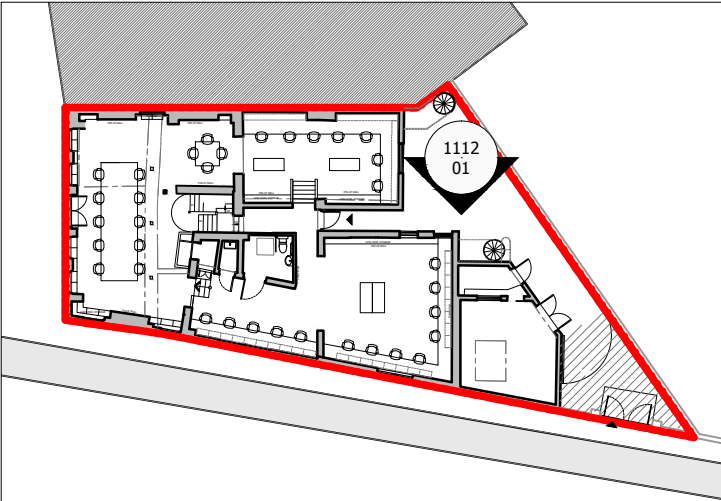
1:100

0 1000 2000

DO NOT SCALE	REV	DATE	DRN	CHK	DESCRIPTION	REV	DATE	DRN	CHK	DESCRIPTION	SCALE 1:100	SIZE A3	DATE 26 FEB 14	846	THREE SIX SIX Proposed North-East Elevation	
DESIGN INTENT INFORMATION																
STRUCTURE, FRAMING & SUPPORT INDICATIVE																
M&E SERVICES INDICATIVE																
© COPYRIGHT : Heatherwick Studio																

DRAWN SN	CHECKED MB	REV 00	STATUS CODE 3	STATUS PLANNING	846-HS-XX-NE-DR-A-GE-1114
Web: <a href="http://www.Heatherwick.com">http://www.Heatherwick.com</a> Email: <a href="mailto:studio@Heatherwick.com">studio@Heatherwick.com</a>					
356 - 364 Gray's Inn Road London tel: +44 (0)20 7833 8800 fax: +44(0)20 7833 8400					

Heatherwick studio



KEY PLAN

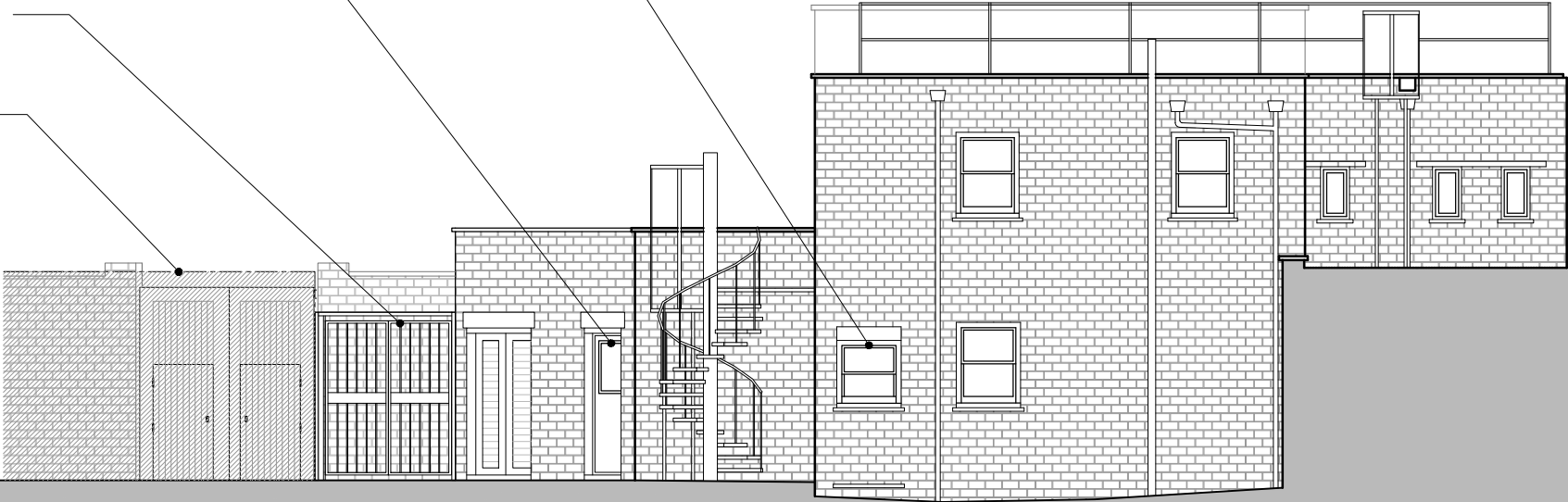
NTS

DOOR TO BE REPLACED  
WITH A WINDOW

DOOR REPLACED WITH  
THE NEW ONE WITH A  
WINDOW

SECONDARY GATE

BEHIND THE BRICK  
REAR WALL



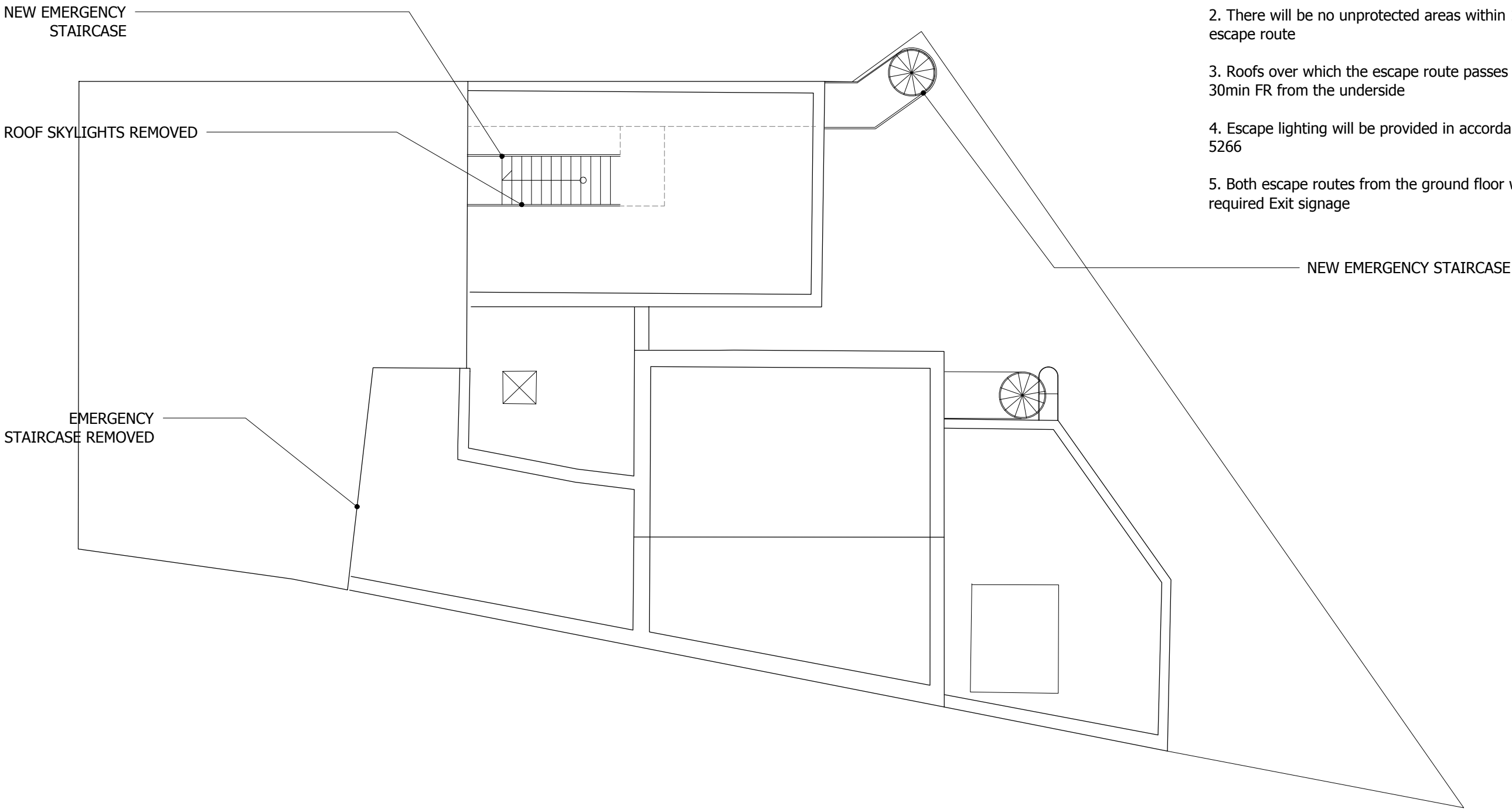
1112  
01  
PROPOSED NORTH-WEST ELEVATION

1:100

0 1000 2000

DO NOT SCALE	REV	DATE	DRN	CHK	DESCRIPTION	REV	DATE	DRN	CHK	DESCRIPTION
DESIGN INTENT INFORMATION										
STRUCTURE, FRAMING & SUPPORT INDICATIVE										
M&E SERVICES INDICATIVE										
© COPYRIGHT : Heatherwick Studio										

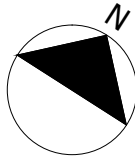
SCALE 1:100	SIZE A3	DATE 26 FEB 14	846	THREE SIX SIX Proposed North-West Elevation	
DRAWN SN	CHECKED MB	REV 00	STATUS CODE 3	STATUS PLANNING	846-HS-XX-NW-DR-A-GE-1112
Web: <a href="http://www.Heatherwick.com">http://www.Heatherwick.com</a> Email: <a href="mailto:studio@Heatherwick.com">studio@Heatherwick.com</a>					Heatherwick studio
356 - 364 Gray's Inn Road London tel: +44 (0)20 7833 8800 fax: +44(0)20 7833 8400					



- NOTE:
1. The building will be covered by an L1 Automatic Fire Detection and Alarm system
  2. There will be no unprotected areas within 1.8m of the escape route
  3. Roofs over which the escape route passes has at least 30min FR from the underside
  4. Escape lighting will be provided in accordance with BS 5266
  5. Both escape routes from the ground floor will have the required Exit signage

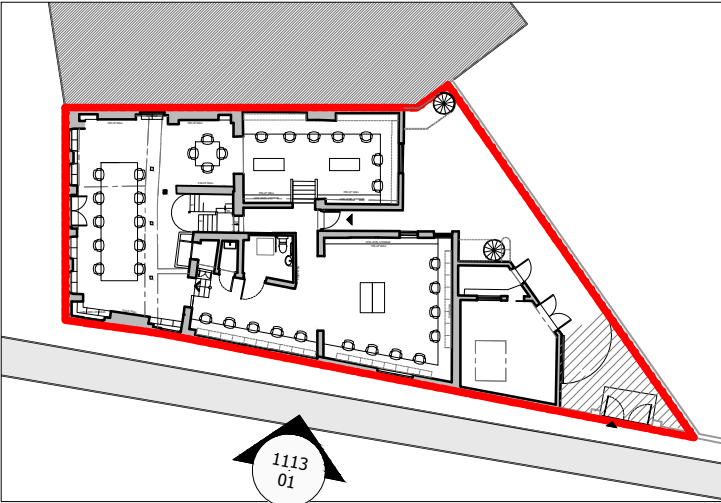
PROPOSED ROOF PLANS

1:100



0 500 1000

DO NOT SCALE	REV	DATE	DRN	CHK	DESCRIPTION	REV	DATE	DRN	CHK	DESCRIPTION	SCALE 1:100	SIZE A3	DATE 26 FEB 14	846	THREE SIX SIX Proposed GA - Roof Level Plan		
DESIGN INTENT INFORMATION																	
STRUCTURE, FRAMING & SUPPORT INDICATIVE																	
M&E SERVICES INDICATIVE											DRAWN SN	CHECKED MB	REV 00	STATUS CODE 3	STATUS PLANNING	846-HS-XX-RL-DR-A-GP-1106	
											Web: <a href="http://www.Heatherwick.com">http://www.Heatherwick.com</a> Email: <a href="mailto:studio@Heatherwick.com">studio@Heatherwick.com</a>						Heatherwick studio
© COPYRIGHT : Heatherwick Studio											356 - 364 Gray's Inn Road London tel: +44 (0)20 7833 8800 fax: +44(0)20 7833 8400						



KEY PLAN

NTS

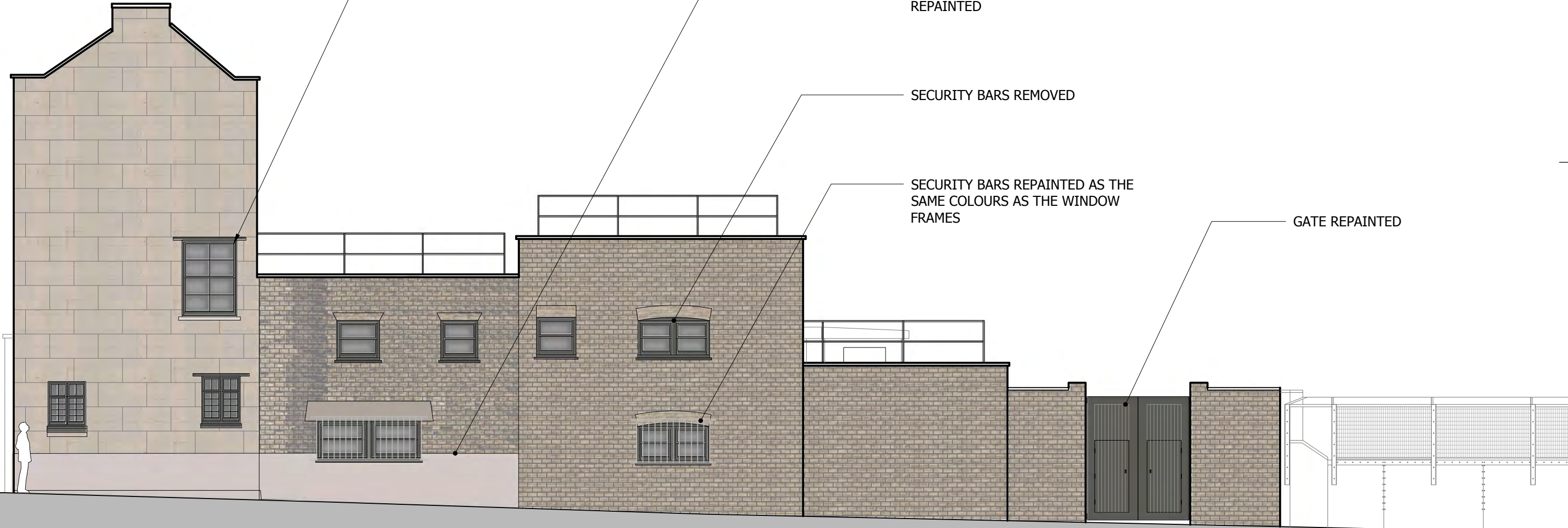
ALL THE WINDOW FRAMES  
TO BE REPAINTED

MASONRY WALL  
REPAINTED

SECURITY BARS REMOVED

SECURITY BARS REPAINTED AS THE  
SAME COLOURS AS THE WINDOW  
FRAMES

GATE REPAINTED



1113

01

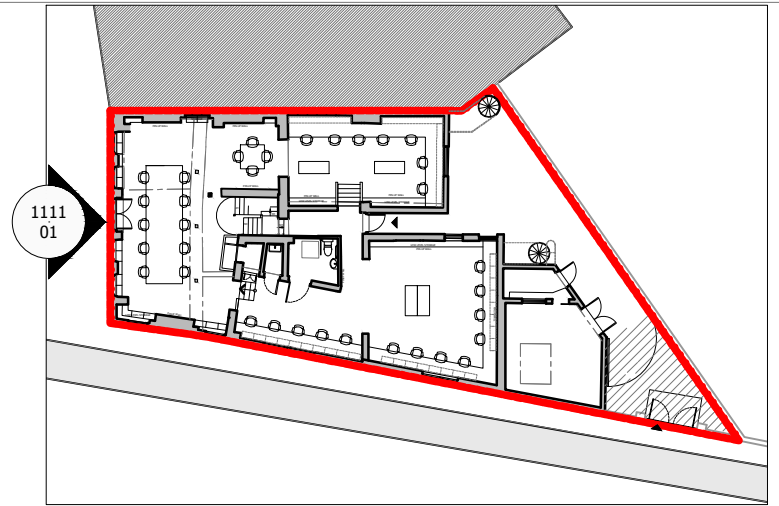
PROPOSED SOUTH-EAST ELEVATION

1:100

0 1000 2000

DO NOT SCALE	REV	DATE	DRN	CHK	DESCRIPTION	REV	DATE	DRN	CHK	DESCRIPTION	SCALE 1:100	SIZE A3	DATE 26 FEB 14	846	THREE SIX SIX Proposed South-East Elevation
DESIGN INTENT INFORMATION															
STRUCTURE, FRAMING & SUPPORT INDICATIVE															
M&E SERVICES INDICATIVE															
© COPYRIGHT : Heatherwick Studio											Web: <a href="http://www.Heatherwick.com">http://www.Heatherwick.com</a> Email: <a href="mailto:studio@Heatherwick.com">studio@Heatherwick.com</a>				
											356 - 364 Gray's Inn Road London tel: +44 (0)20 7833 8800 fax: +44(0)20 7833 8400				

Heatherwick studio



KEY PLAN

NTS



WINDOW FRAMES AND  
DOORS REPAINTED

MASONRY WALL  
REPAINTED

1111  
01  
PROPOSED SOUTH-WEST ELEVATION

1:100

0 1000 2000

DO NOT SCALE	REV	DATE	DRN	CHK	DESCRIPTION	REV	DATE	DRN	CHK	DESCRIPTION
DESIGN INTENT INFORMATION										
STRUCTURE, FRAMING & SUPPORT INDICATIVE										
M&E SERVICES INDICATIVE										
© COPYRIGHT : Heatherwick Studio										

SCALE 1:100	SIZE A3	DATE 26 FEB 14	846	THREE SIX SIX Proposed South-West Elevation	
DRAWN SN	CHECKED MB	REV 00	STATUS CODE 3	STATUS PLANNING	846-HS-XX-SW-DR-A-GE-1111
Web: <a href="http://www.Heatherwick.com">http://www.Heatherwick.com</a> Email: <a href="mailto:studio@Heatherwick.com">studio@Heatherwick.com</a>				<b>Heatherwick studio</b>	
356 - 364 Gray's Inn Road London tel: +44 (0)20 7833 8800 fax: +44(0)20 7833 8400					