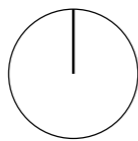


FLEET HOUSE _ SCHEDULE OF PROPOSED PLANNING AMENDMENTS:

1. Amendments to proportions of building resulting in a reduced floorspace.
2. Changes to basement courtyard resulting in reduced amount of excavation.
3. Amendments to roof layout comprising alterations to roof lights, removal of one rooflight and provision of roof hatch and solar panels.
4. Changes to first floor roof including detailed design of approved metal balustrade and provision of stone surfacing on area outside master bedroom.
5. Changes to elevational treatment of building to simplify design including use of brick instead of stone for panel next to first floor front window, use of brick and metal instead of render for side and rear elevation panels, provision of metal vent on side elevation to provide natural ventilation to wet room, use of quartzite stone in entrance area, roof coping to be metal.
6. Changes to design of garden outbuilding to include sedum roof, timber cladding instead of timber louvres and slot window next to door instead of perforations.
7. Alterations to fenestration including readjustment to design of box window, rear and side windows. Changes to details of window reveals.
8. Change to position of manifold chamber for ground source heat pumps.



Revision	Date	Description
00	28/03/13	Planning application
01	15/05/13	Amends to planning applicatton
02	28/04/14	Amends to approved planning applicatton

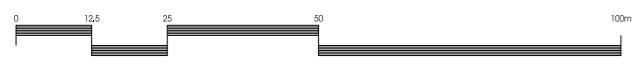


Key:
— Fleet House Boundary Line

Stanton Williams
 36 Graham Street
 London N1 8GJ
 Phone +44 (0)20 7880 6400
 Email
www.stantonwilliams.com

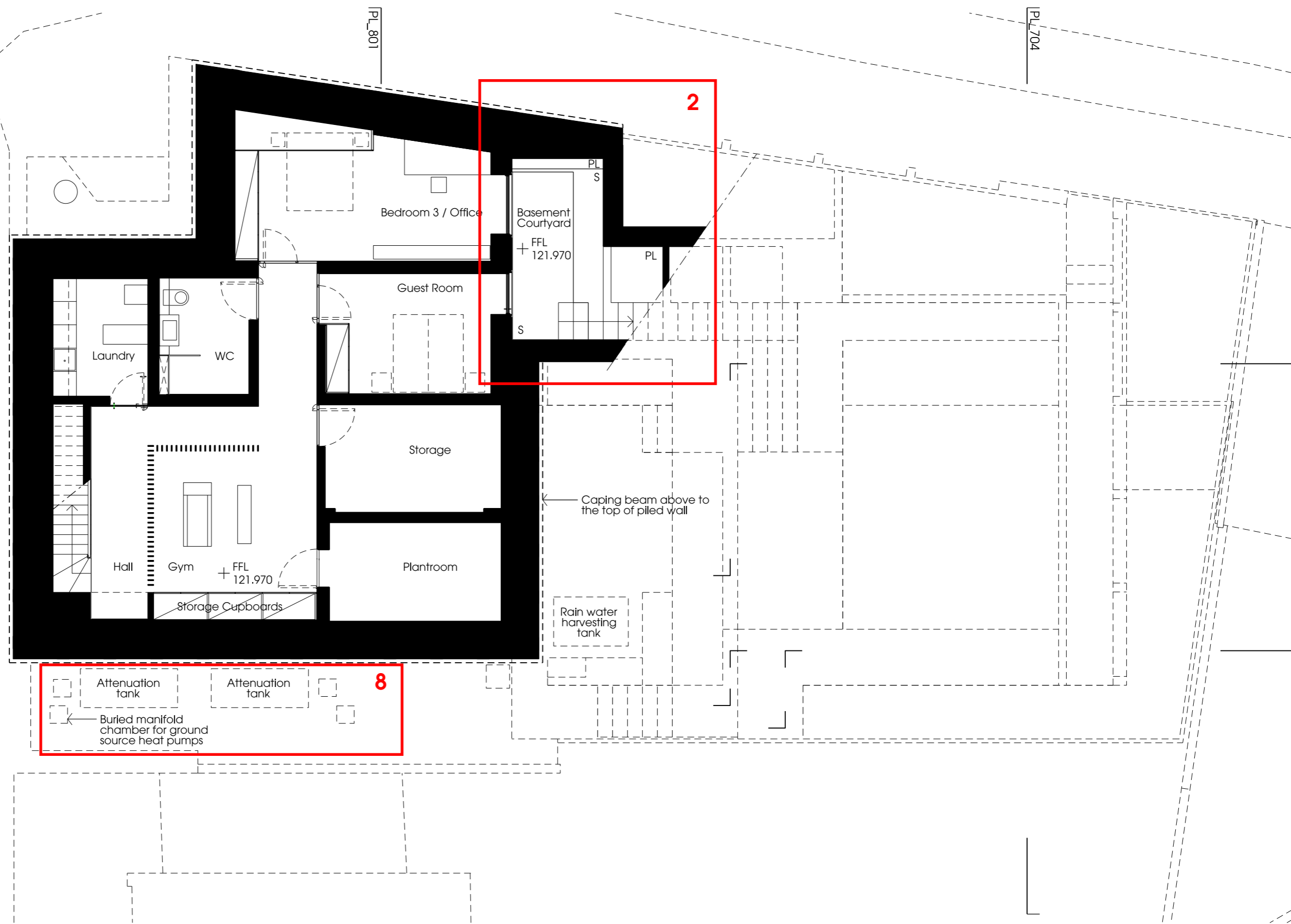
Project
 Fleet House
 3 Admiral's Walk, Hampstead
 London NW3 6RS

Drawing Title
 Proposed Layout
 Location Plan

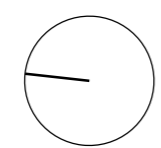


STANTON WILLIAMS

Date	Scale @ A3	Status	Project No.	Drawing No.	Revision
28/04/2014	1:1250	Planning	451	PL_500	02
Drawn	Checked	Approved			
PT	PR	PR			



Revision	Date	Description
00	28/03/13	Planning application
01	15/05/13	Amends to planning application
02	28/04/14	Amends to approved planning application



- Key:**
- B Brick
 - BP Brick wall with perforations
 - GR Green Roof / planting
 - TG Translucent Glass
 - CG Clear Glass
 - MG Metal Grille
 - GB Glass Balustrade
 - MB Metal Balustrade
 - PL Planting
 - R Render
 - S Stone
 - T Timber
 - TS Timber screen
 - C Concrete

Stanton Williams
 36 Graham Street
 London N1 8GJ
 Phone +44 (0)20 7880 6400
 Email
 www.stantonwilliams.com

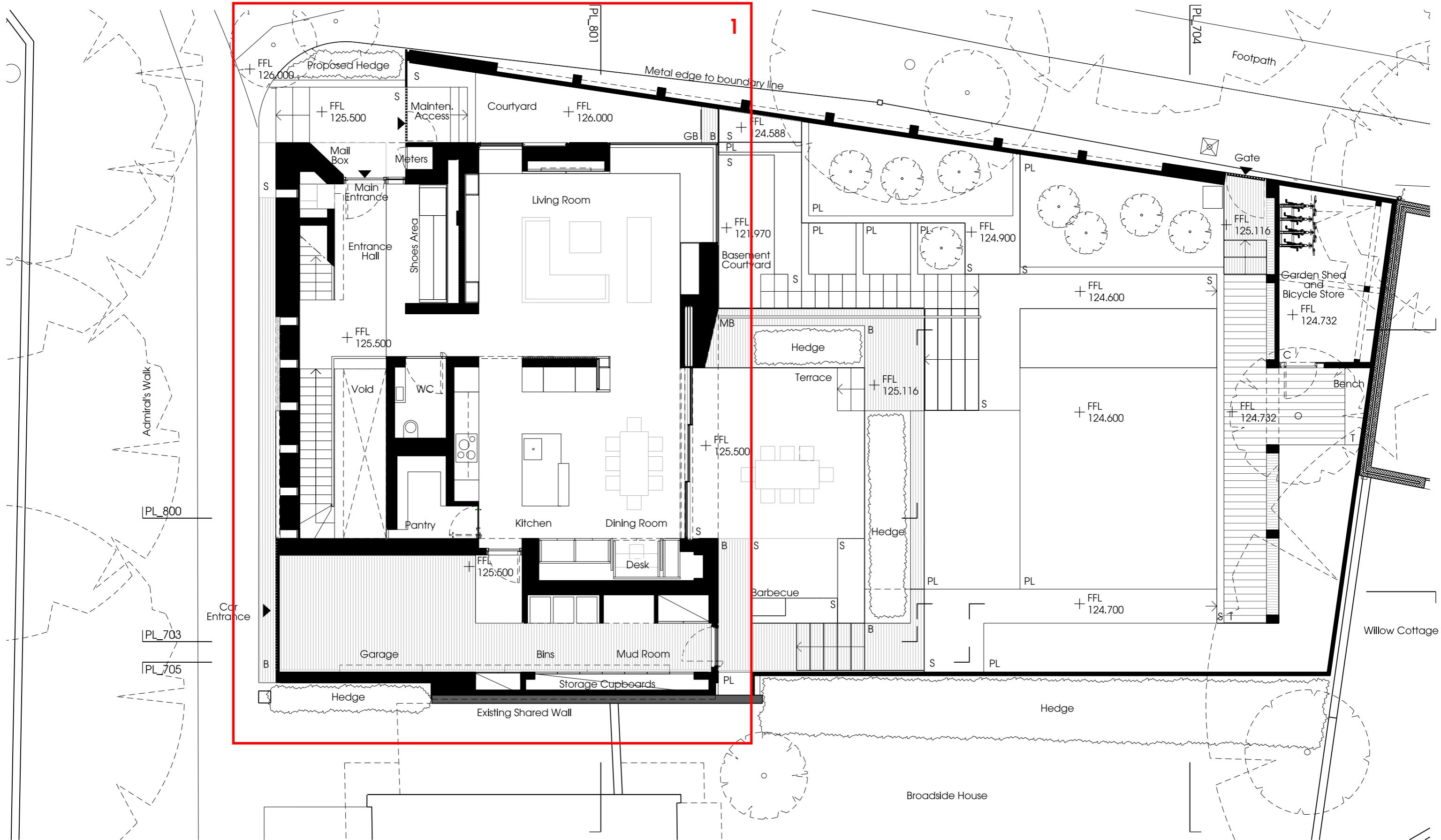
STANTON WILLIAMS

Project
 Fleet House
 3 Admiral's Walk, Hampstead
 London NW3 6RS

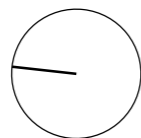
Drawing Title
 Proposed Layout
 Basement Plan

Date	Scale @ A3	Status	Project No.	Drawing No.	Revision
28/04/2014	1:100	Planning	451	PP_600	02
Drawn	Checked	Approved			
PT	PR	PR			





Revision	Date	Description
00	28/03/13	Planning application
01	15/05/13	Amends to planning application
02	28/04/14	Amends to approved planning application



Key:

B	Brick
BP	Brick wall with perforations
GR	Green Roof / planting
TG	Translucent Glass
CG	Clear Glass
MG	Metal Grille
GB	Glass Balustrade
MB	Metal Balustrade
PL	Planting
R	Render
S	Stone
T	Timber
TS	Timber screen
C	Concrete

Stanton Williams
 36 Graham Street
 London N1 8GJ
 Phone +44 (0)20 7880 6400
 Email
 www.stantonwilliams.com

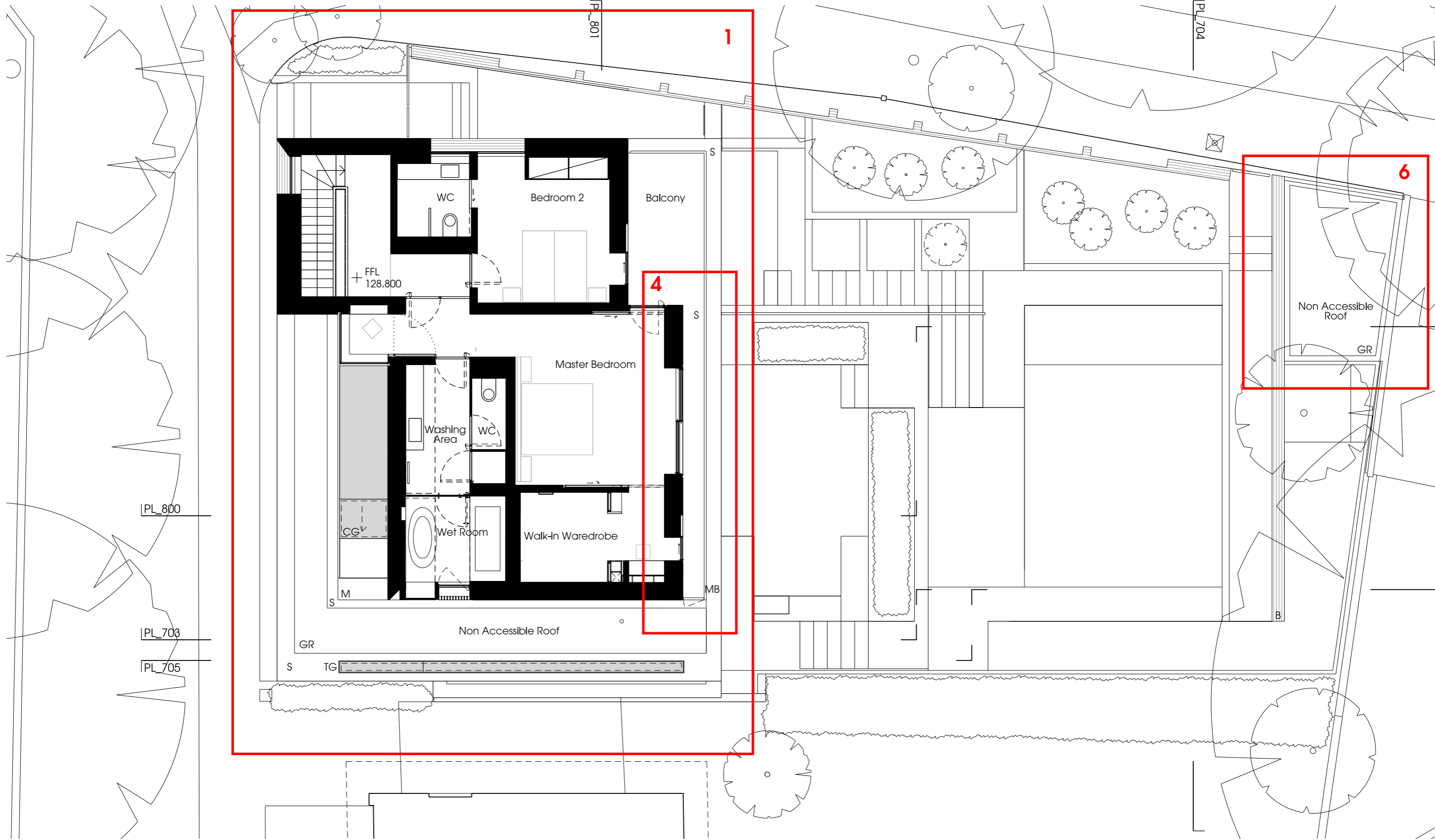
Project
 Fleet House
 3 Admiral's Walk, Hampstead
 London NW3 6RS

Drawing Title
 Proposed Layout
 Ground Floor Plan

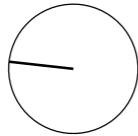


STANTON
WILLIAMS

Date	Scale @ A3	Status	Project No.	Drawing No.	Revision
28/04/2014	1:100	Planning	451	PP_601	02
Drawn	Checked	Approved			
PT	PR	PR			



Revision	Date	Description
00	28/03/13	Planning application
01	15/05/13	Amends to planning application
02	28/04/14	Amends to approved planning application



Key:

B	Brick
BP	Brick wall with perforations
GR	Green Roof / planting
TG	Translucent Glass
CG	Clear Glass
MG	Metal Grille
GB	Glass Balustrade
MB	Metal Balustrade
PL	Planting
R	Render
S	Stone
T	Timber
TS	Timber screen
C	Concrete

Stanton Williams
 36 Graham Street
 London N1 8GJ
 Phone +44 (0)20 7880 6400
 Email
www.stantonwilliams.com

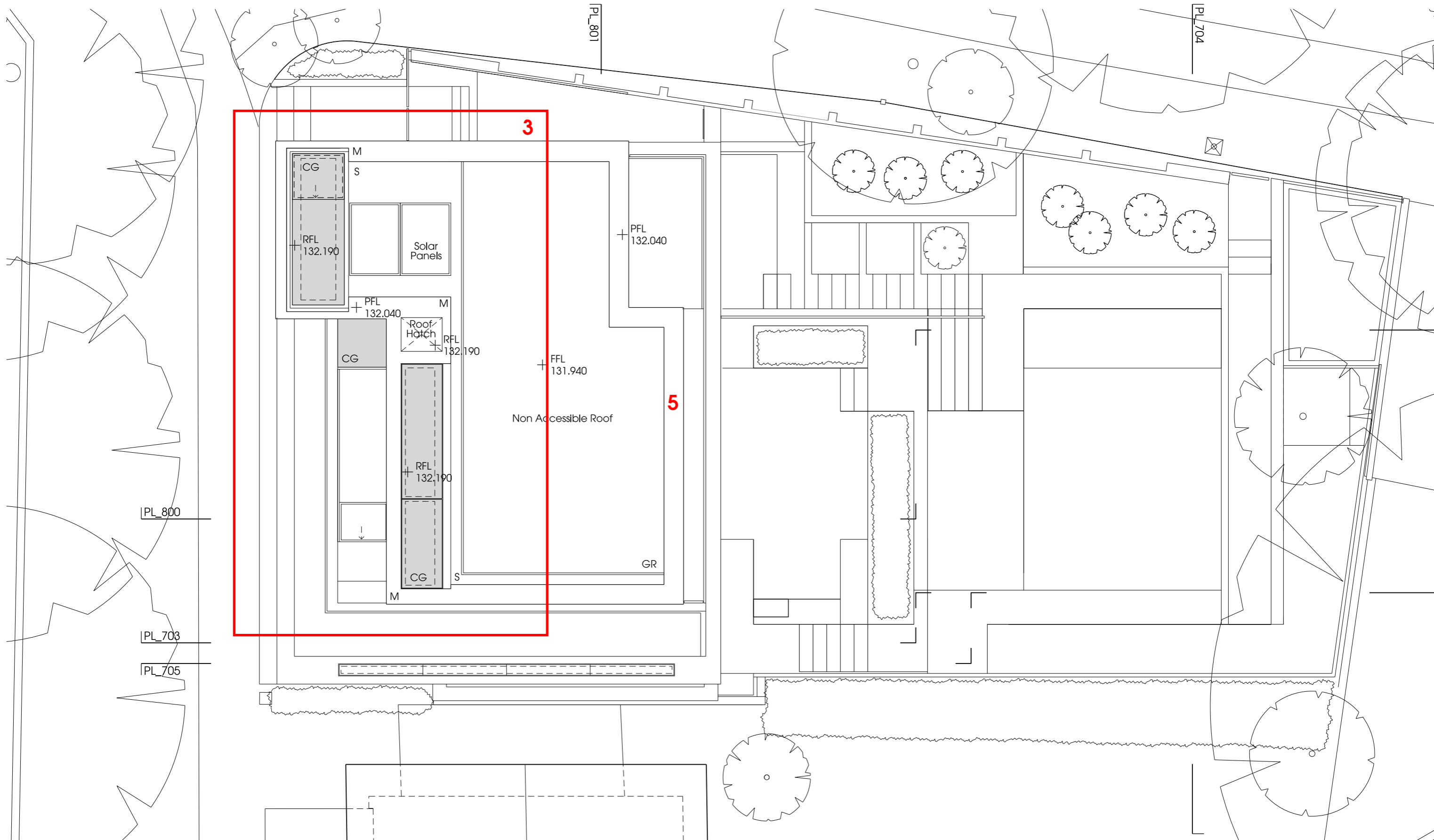
**STANTON
WILLIAMS**

Project
 Fleet House
 3 Admiral's Walk, Hampstead
 London NW3 6RS

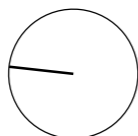
Drawing Title
 Proposed Layout
 First Floor Plan

Date	Scale @ A3	Status	Project No.	Drawing No.	Revision
28/04/2014	1:100	Planning	451	PP_602	02
Drawn	Checked	Approved			
PT	PR	PR			





Revision	Date	Description
00	28/03/13	Planning application
01	15/05/13	Amends to planning application
02	28/04/14	Amends to approved planning application



Key:

B	Brick
BP	Brick wall with perforations
GR	Green Roof / planting
TG	Translucent Glass
CG	Clear Glass
MG	Metal Grille
GB	Glass Balustrade
MB	Metal Balustrade
PL	Planting
R	Render
S	Stone
T	Timber
TS	Timber screen
C	Concrete

Stanton Williams
 36 Graham Street
 London N1 8GJ
 Phone +44 (0)20 7880 6400
 Email
www.stantonwilliams.com

Project
 Fleet House
 3 Admiral's Walk, Hampstead
 London NW3 6RS

Drawing Title
 Proposed Layout
 Roof Plan



STANTON WILLIAMS

Date	Scale @ A3	Status	Project No.	Drawing No.	Revision
28/04/2014	1:100	Planning	451	PP_603	02
Drawn	Checked	Approved			
PT	PR	PR			