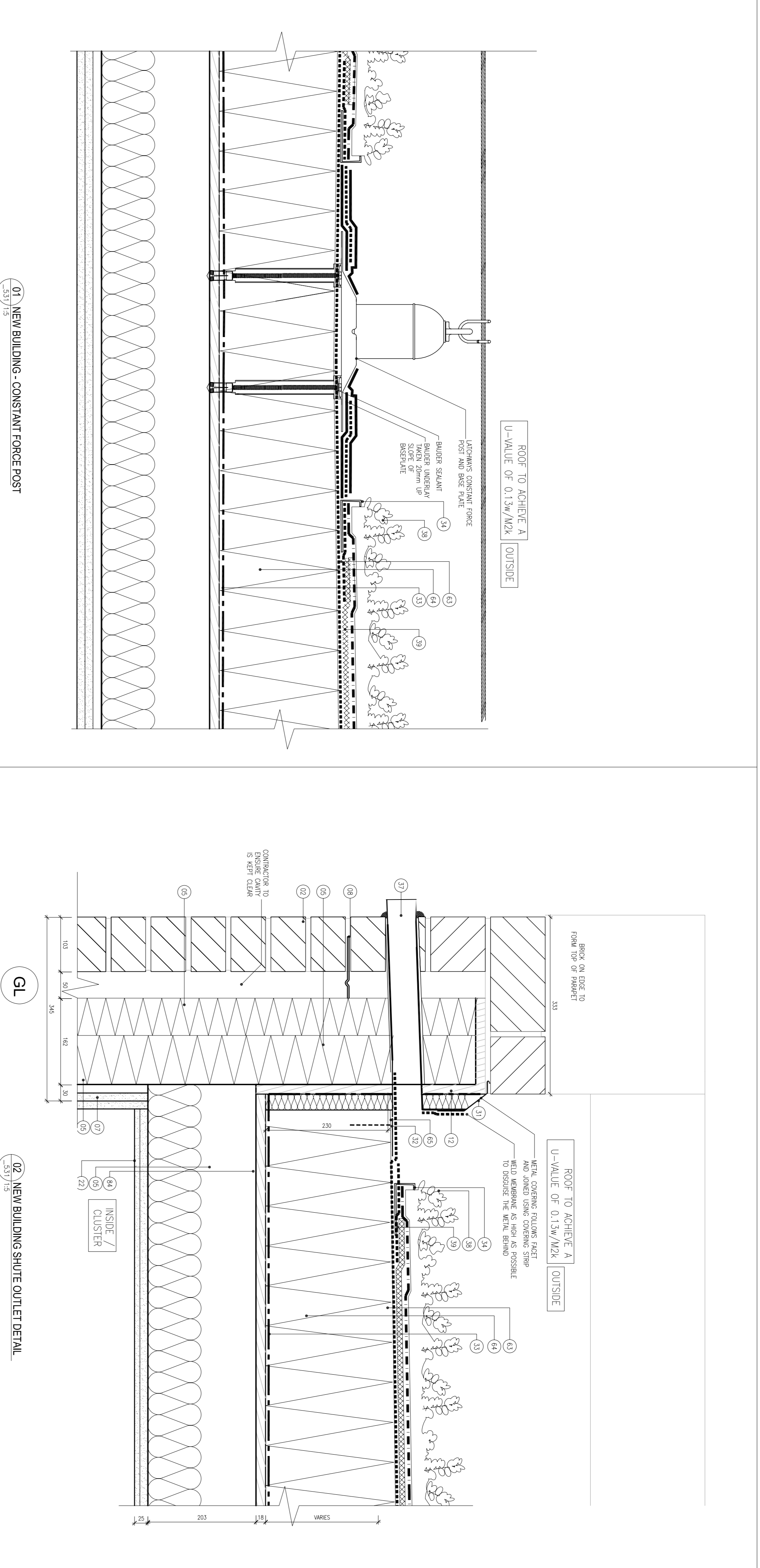


WILLMOTT DIXON		REVIEWED	STATUS
		FOR COMMENT	A
HOUSING		FOR CONSTRUCTION	B
		SUBMITTED	C
DATE			

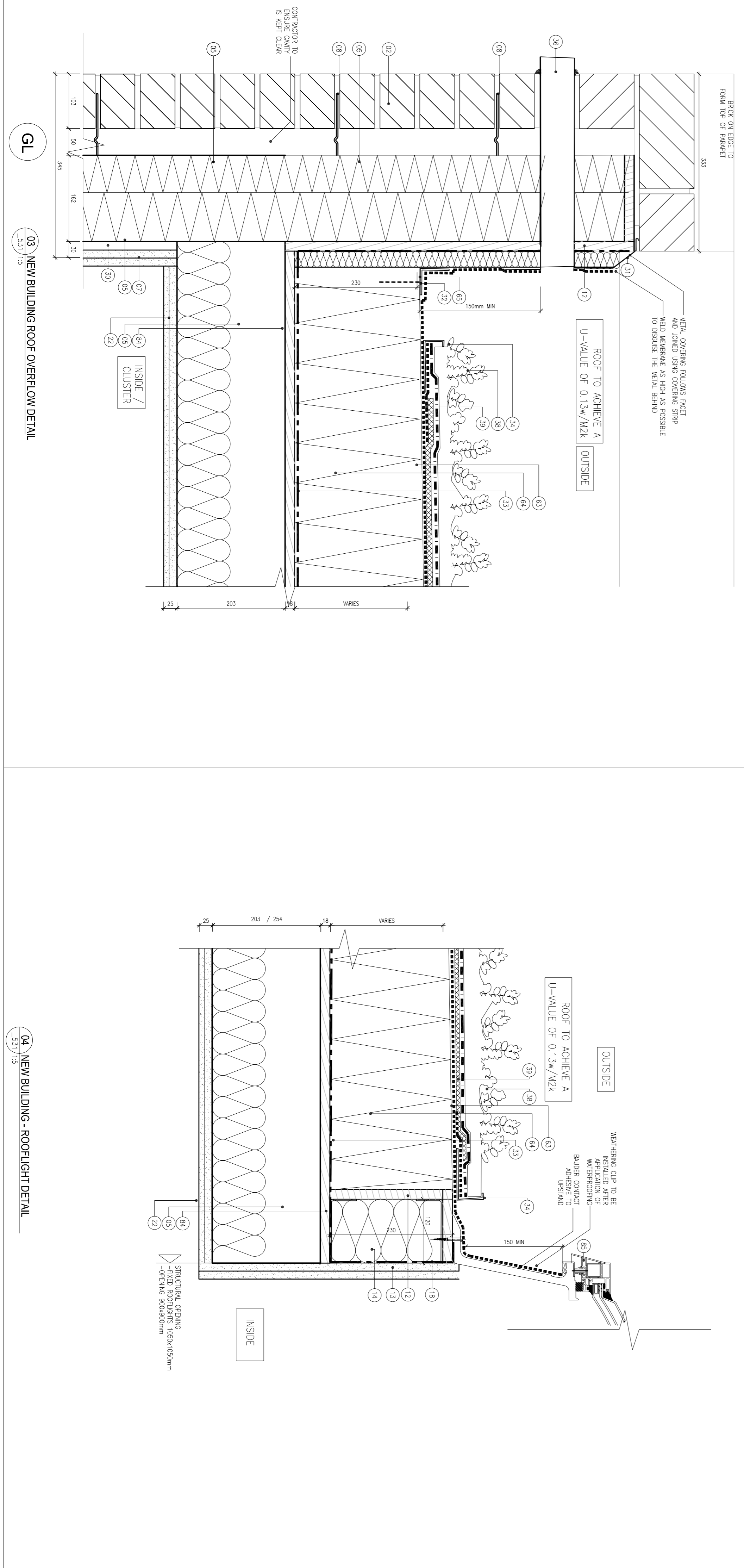
NOTES: NOT SCALE FROM THIS DRAWING. ALL DIMENSIONS TO BE CHECKED ON SITE BY CONTRACTOR BEFORE CONSTRUCTION COMMENCES.

1. ALL BUILDING WORKS ARE TO BE CARRIED OUT IN COMPLIANCE WITH THE RELEVANT BS EN STANDARDS, BUILDING REGULATIONS AND NEBC REQUIREMENTS.
2. THE BUILDING IS TO BE CONSTRUCTED TO AN AIR TIGHTNESS OF 3 m³/hr @ 50 Pa.
3. MANUFACTURER'S GUIDANCE AND RECOMMENDATIONS ARE TO BE FOLLOWED FOR INSTALLATION OF ALL CONSTRUCTION COMPONENTS.
4. THE DRAWING IS TO BE READ IN CONJUNCTION WITH OTHER CONTRACT DOCUMENTS.
5. REFERENCES TO MAKE CONSULTANTS GRANTING FOR LOCATION AND NUMBER OF SERVICES ALL DRAWINGS TO BE READ IN CONJUNCTION WITH SET DRAWINGS.
6. ALL EXISTING AND PROPOSED STRUCTURAL STEELWORK TO 5/E DESIGN AND SPECIFICATION TO BE PAINTED WITH AN INTERMEDIATE PAINT TO SPECIFY 60 MINUTES FIRE RATING.

1. FLOOR JOISTWORK - YELLOW STABILISED FIBRE WOOL BATT INSULATION CONCEALED BEAM KEEP HOLES, CONFORMING TO MATCH EXISTING BUILDING.
2. EXTERNAL BRICKWORK, MEMBERSHIPER RUSTIC RANGE, SPEC. BEC OF WORKMAN 124 IN BLOCKED HANDLE JOINTS, CONCEALED BEAM KEEP HOLES.
3. EXTERNAL BRICKWORK, BED TO MATCH EXISTING BUILDING.
4. TIECLIP HANGERS/BRACE/MEASUREMENT OR EQUAL APPROVED MIN 100MM HORIZONTAL AND 150MM VERTICAL LAPTED JOINTS.
5. BRICKWORK TO BE CONSTRUCTED IN ACCORDANCE WITH ACCEPTED CONSTRUCTION DETAILS.
6. WEAPING CONTROL LAYER IN ACCORDANCE WITH ACCEPTED CONSTRUCTION DETAILS.
7. 2 LAYERS OF 120mm BRITISH ORSILAM SOUNDROCK.
8. 2 LAYERS OF 120mm BRITISH ORSILAM SOUNDROCK TIED AND JOINT TO FINISH HORIZONTAL JOINTS.
9. 2 LAYERS OF 120mm BRITISH ORSILAM SOUNDROCK TIED AND JOINT TO FINISH HORIZONTAL JOINTS.
10. 2 LAYERS OF 120mm BRITISH ORSILAM SOUNDROCK TIED AND JOINT TO FINISH HORIZONTAL JOINTS.
11. 2 LAYERS OF 120mm BRITISH ORSILAM SOUNDROCK TIED AND JOINT TO FINISH HORIZONTAL JOINTS.
12. 2 LAYERS OF 120mm BRITISH ORSILAM SOUNDROCK TIED AND JOINT TO FINISH HORIZONTAL JOINTS.
13. 2 LAYERS OF 120mm BRITISH ORSILAM SOUNDROCK TIED AND JOINT TO FINISH HORIZONTAL JOINTS.
14. 2 LAYERS OF 120mm BRITISH ORSILAM SOUNDROCK TIED AND JOINT TO FINISH HORIZONTAL JOINTS.
15. 2 LAYERS OF 120mm BRITISH ORSILAM SOUNDROCK TIED AND JOINT TO FINISH HORIZONTAL JOINTS.
16. 2 LAYERS OF 120mm BRITISH ORSILAM SOUNDROCK TIED AND JOINT TO FINISH HORIZONTAL JOINTS.
17. 2 LAYERS OF 120mm BRITISH ORSILAM SOUNDROCK TIED AND JOINT TO FINISH HORIZONTAL JOINTS.
18. 2 LAYERS OF 120mm BRITISH ORSILAM SOUNDROCK TIED AND JOINT TO FINISH HORIZONTAL JOINTS.
19. 2 LAYERS OF 120mm BRITISH ORSILAM SOUNDROCK TIED AND JOINT TO FINISH HORIZONTAL JOINTS.
20. 2 LAYERS OF 120mm BRITISH ORSILAM SOUNDROCK TIED AND JOINT TO FINISH HORIZONTAL JOINTS.
21. 2 LAYERS OF 120mm BRITISH ORSILAM SOUNDROCK TIED AND JOINT TO FINISH HORIZONTAL JOINTS.
22. 2 LAYERS OF 120mm BRITISH ORSILAM SOUNDROCK TIED AND JOINT TO FINISH HORIZONTAL JOINTS.
23. 2 LAYERS OF 120mm BRITISH ORSILAM SOUNDROCK TIED AND JOINT TO FINISH HORIZONTAL JOINTS.
24. 2 LAYERS OF 120mm BRITISH ORSILAM SOUNDROCK TIED AND JOINT TO FINISH HORIZONTAL JOINTS.
25. 2 LAYERS OF 120mm BRITISH ORSILAM SOUNDROCK TIED AND JOINT TO FINISH HORIZONTAL JOINTS.
26. 2 LAYERS OF 120mm BRITISH ORSILAM SOUNDROCK TIED AND JOINT TO FINISH HORIZONTAL JOINTS.
27. 2 LAYERS OF 120mm BRITISH ORSILAM SOUNDROCK TIED AND JOINT TO FINISH HORIZONTAL JOINTS.
28. 2 LAYERS OF 120mm BRITISH ORSILAM SOUNDROCK TIED AND JOINT TO FINISH HORIZONTAL JOINTS.
29. 2 LAYERS OF 120mm BRITISH ORSILAM SOUNDROCK TIED AND JOINT TO FINISH HORIZONTAL JOINTS.
30. 2 LAYERS OF 120mm BRITISH ORSILAM SOUNDROCK TIED AND JOINT TO FINISH HORIZONTAL JOINTS.
31. 2 LAYERS OF 120mm BRITISH ORSILAM SOUNDROCK TIED AND JOINT TO FINISH HORIZONTAL JOINTS.
32. 2 LAYERS OF 120mm BRITISH ORSILAM SOUNDROCK TIED AND JOINT TO FINISH HORIZONTAL JOINTS.
33. 2 LAYERS OF 120mm BRITISH ORSILAM SOUNDROCK TIED AND JOINT TO FINISH HORIZONTAL JOINTS.
34. 2 LAYERS OF 120mm BRITISH ORSILAM SOUNDROCK TIED AND JOINT TO FINISH HORIZONTAL JOINTS.
35. 2 LAYERS OF 120mm BRITISH ORSILAM SOUNDROCK TIED AND JOINT TO FINISH HORIZONTAL JOINTS.
36. 2 LAYERS OF 120mm BRITISH ORSILAM SOUNDROCK TIED AND JOINT TO FINISH HORIZONTAL JOINTS.
37. 2 LAYERS OF 120mm BRITISH ORSILAM SOUNDROCK TIED AND JOINT TO FINISH HORIZONTAL JOINTS.
38. 2 LAYERS OF 120mm BRITISH ORSILAM SOUNDROCK TIED AND JOINT TO FINISH HORIZONTAL JOINTS.
39. 2 LAYERS OF 120mm BRITISH ORSILAM SOUNDROCK TIED AND JOINT TO FINISH HORIZONTAL JOINTS.
40. 2 LAYERS OF 120mm BRITISH ORSILAM SOUNDROCK TIED AND JOINT TO FINISH HORIZONTAL JOINTS.
41. 2 LAYERS OF 120mm BRITISH ORSILAM SOUNDROCK TIED AND JOINT TO FINISH HORIZONTAL JOINTS.
42. 2 LAYERS OF 120mm BRITISH ORSILAM SOUNDROCK TIED AND JOINT TO FINISH HORIZONTAL JOINTS.
43. 2 LAYERS OF 120mm BRITISH ORSILAM SOUNDROCK TIED AND JOINT TO FINISH HORIZONTAL JOINTS.
44. 2 LAYERS OF 120mm BRITISH ORSILAM SOUNDROCK TIED AND JOINT TO FINISH HORIZONTAL JOINTS.
45. 2 LAYERS OF 120mm BRITISH ORSILAM SOUNDROCK TIED AND JOINT TO FINISH HORIZONTAL JOINTS.
46. 2 LAYERS OF 120mm BRITISH ORSILAM SOUNDROCK TIED AND JOINT TO FINISH HORIZONTAL JOINTS.
47. 2 LAYERS OF 120mm BRITISH ORSILAM SOUNDROCK TIED AND JOINT TO FINISH HORIZONTAL JOINTS.
48. 2 LAYERS OF 120mm BRITISH ORSILAM SOUNDROCK TIED AND JOINT TO FINISH HORIZONTAL JOINTS.
49. 2 LAYERS OF 120mm BRITISH ORSILAM SOUNDROCK TIED AND JOINT TO FINISH HORIZONTAL JOINTS.
50. 2 LAYERS OF 120mm BRITISH ORSILAM SOUNDROCK TIED AND JOINT TO FINISH HORIZONTAL JOINTS.
51. 2 LAYERS OF 120mm BRITISH ORSILAM SOUNDROCK TIED AND JOINT TO FINISH HORIZONTAL JOINTS.
52. 2 LAYERS OF 120mm BRITISH ORSILAM SOUNDROCK TIED AND JOINT TO FINISH HORIZONTAL JOINTS.
53. 2 LAYERS OF 120mm BRITISH ORSILAM SOUNDROCK TIED AND JOINT TO FINISH HORIZONTAL JOINTS.
54. 2 LAYERS OF 120mm BRITISH ORSILAM SOUNDROCK TIED AND JOINT TO FINISH HORIZONTAL JOINTS.
55. 2 LAYERS OF 120mm BRITISH ORSILAM SOUNDROCK TIED AND JOINT TO FINISH HORIZONTAL JOINTS.
56. 2 LAYERS OF 120mm BRITISH ORSILAM SOUNDROCK TIED AND JOINT TO FINISH HORIZONTAL JOINTS.
57. 2 LAYERS OF 120mm BRITISH ORSILAM SOUNDROCK TIED AND JOINT TO FINISH HORIZONTAL JOINTS.
58. 2 LAYERS OF 120mm BRITISH ORSILAM SOUNDROCK TIED AND JOINT TO FINISH HORIZONTAL JOINTS.
59. 2 LAYERS OF 120mm BRITISH ORSILAM SOUNDROCK TIED AND JOINT TO FINISH HORIZONTAL JOINTS.
60. 2 LAYERS OF 120mm BRITISH ORSILAM SOUNDROCK TIED AND JOINT TO FINISH HORIZONTAL JOINTS.
61. 2 LAYERS OF 120mm BRITISH ORSILAM SOUNDROCK TIED AND JOINT TO FINISH HORIZONTAL JOINTS.
62. 2 LAYERS OF 120mm BRITISH ORSILAM SOUNDROCK TIED AND JOINT TO FINISH HORIZONTAL JOINTS.
63. 2 LAYERS OF 120mm BRITISH ORSILAM SOUNDROCK TIED AND JOINT TO FINISH HORIZONTAL JOINTS.
64. 2 LAYERS OF 120mm BRITISH ORSILAM SOUNDROCK TIED AND JOINT TO FINISH HORIZONTAL JOINTS.
65. 2 LAYERS OF 120mm BRITISH ORSILAM SOUNDROCK TIED AND JOINT TO FINISH HORIZONTAL JOINTS.
66. 2 LAYERS OF 120mm BRITISH ORSILAM SOUNDROCK TIED AND JOINT TO FINISH HORIZONTAL JOINTS.
67. 2 LAYERS OF 120mm BRITISH ORSILAM SOUNDROCK TIED AND JOINT TO FINISH HORIZONTAL JOINTS.
68. 2 LAYERS OF 120mm BRITISH ORSILAM SOUNDROCK TIED AND JOINT TO FINISH HORIZONTAL JOINTS.
69. 2 LAYERS OF 120mm BRITISH ORSILAM SOUNDROCK TIED AND JOINT TO FINISH HORIZONTAL JOINTS.
70. 2 LAYERS OF 120mm BRITISH ORSILAM SOUNDROCK TIED AND JOINT TO FINISH HORIZONTAL JOINTS.
71. 2 LAYERS OF 120mm BRITISH ORSILAM SOUNDROCK TIED AND JOINT TO FINISH HORIZONTAL JOINTS.
72. 2 LAYERS OF 120mm BRITISH ORSILAM SOUNDROCK TIED AND JOINT TO FINISH HORIZONTAL JOINTS.
73. 2 LAYERS OF 120mm BRITISH ORSILAM SOUNDROCK TIED AND JOINT TO FINISH HORIZONTAL JOINTS.
74. 2 LAYERS OF 120mm BRITISH ORSILAM SOUNDROCK TIED AND JOINT TO FINISH HORIZONTAL JOINTS.
75. 2 LAYERS OF 120mm BRITISH ORSILAM SOUNDROCK TIED AND JOINT TO FINISH HORIZONTAL JOINTS.
76. 2 LAYERS OF 120mm BRITISH ORSILAM SOUNDROCK TIED AND JOINT TO FINISH HORIZONTAL JOINTS.
77. 2 LAYERS OF 120mm BRITISH ORSILAM SOUNDROCK TIED AND JOINT TO FINISH HORIZONTAL JOINTS.
78. 2 LAYERS OF 120mm BRITISH ORSILAM SOUNDROCK TIED AND JOINT TO FINISH HORIZONTAL JOINTS.
79. 2 LAYERS OF 120mm BRITISH ORSILAM SOUNDROCK TIED AND JOINT TO FINISH HORIZONTAL JOINTS.
80. 2 LAYERS OF 120mm BRITISH ORSILAM SOUNDROCK TIED AND JOINT TO FINISH HORIZONTAL JOINTS.
81. 2 LAYERS OF 120mm BRITISH ORSILAM SOUNDROCK TIED AND JOINT TO FINISH HORIZONTAL JOINTS.
82. 2 LAYERS OF 120mm BRITISH ORSILAM SOUNDROCK TIED AND JOINT TO FINISH HORIZONTAL JOINTS.
83. 2 LAYERS OF 120mm BRITISH ORSILAM SOUNDROCK TIED AND JOINT TO FINISH HORIZONTAL JOINTS.
84. 2 LAYERS OF 120mm BRITISH ORSILAM SOUNDROCK TIED AND JOINT TO FINISH HORIZONTAL JOINTS.
85. 2 LAYERS OF 120mm BRITISH ORSILAM SOUNDROCK TIED AND JOINT TO FINISH HORIZONTAL JOINTS.
86. 2 LAYERS OF 120mm BRITISH ORSILAM SOUNDROCK TIED AND JOINT TO FINISH HORIZONTAL JOINTS.
87. 2 LAYERS OF 120mm BRITISH ORSILAM SOUNDROCK TIED AND JOINT TO FINISH HORIZONTAL JOINTS.
88. 2 LAYERS OF 120mm BRITISH ORSILAM SOUNDROCK TIED AND JOINT TO FINISH HORIZONTAL JOINTS.
89. 2 LAYERS OF 120mm BRITISH ORSILAM SOUNDROCK TIED AND JOINT TO FINISH HORIZONTAL JOINTS.
90. 2 LAYERS OF 120mm BRITISH ORSILAM SOUNDROCK TIED AND JOINT TO FINISH HORIZONTAL JOINTS.
91. 2 LAYERS OF 120mm BRITISH ORSILAM SOUNDROCK TIED AND JOINT TO FINISH HORIZONTAL JOINTS.
92. 2 LAYERS OF 120mm BRITISH ORSILAM SOUNDROCK TIED AND JOINT TO FINISH HORIZONTAL JOINTS.
93. 2 LAYERS OF 120mm BRITISH ORSILAM SOUNDROCK TIED AND JOINT TO FINISH HORIZONTAL JOINTS.
94. 2 LAYERS OF 120mm BRITISH ORSILAM SOUNDROCK TIED AND JOINT TO FINISH HORIZONTAL JOINTS.
95. 2 LAYERS OF 120mm BRITISH ORSILAM SOUNDROCK TIED AND JOINT TO FINISH HORIZONTAL JOINTS.
96. 2 LAYERS OF 120mm BRITISH ORSILAM SOUNDROCK TIED AND JOINT TO FINISH HORIZONTAL JOINTS.
97. 2 LAYERS OF 120mm BRITISH ORSILAM SOUNDROCK TIED AND JOINT TO FINISH HORIZONTAL JOINTS.
98. 2 LAYERS OF 120mm BRITISH ORSILAM SOUNDROCK TIED AND JOINT TO FINISH HORIZONTAL JOINTS.
99. 2 LAYERS OF 120mm BRITISH ORSILAM SOUNDROCK TIED AND JOINT TO FINISH HORIZONTAL JOINTS.
100. 2 LAYERS OF 120mm BRITISH ORSILAM SOUNDROCK TIED AND JOINT TO FINISH HORIZONTAL JOINTS.



01 NEW BUILDING - CONSTANT FORCE POST



02 NEW BUILDING - ROOFLIGHT DETAIL

03 NEW BUILDING ROOF OVERFLOW DETAIL

04 NEW BUILDING - ROOFLIGHT DETAIL