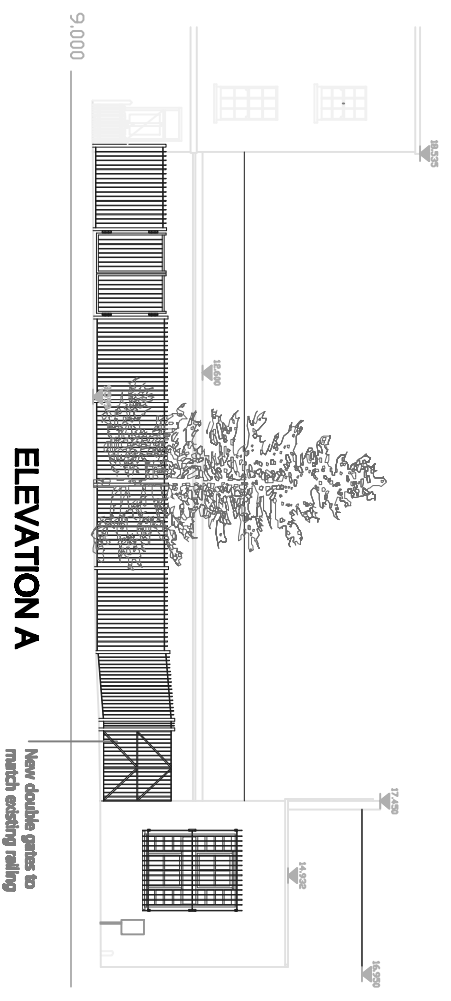
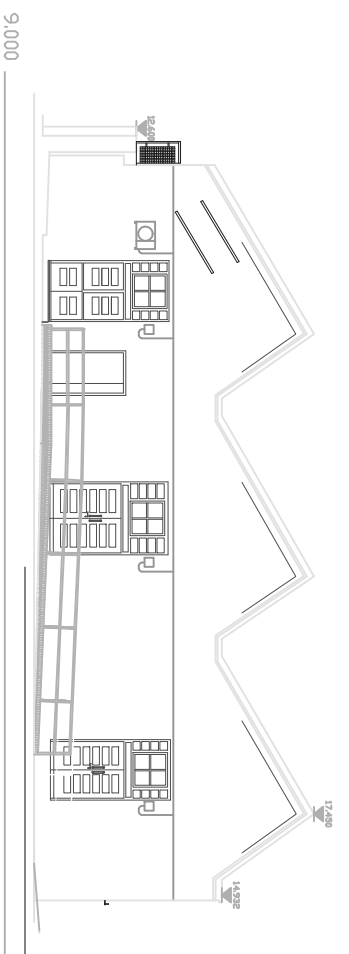


Do not scale from this drawing
All dimensions to be checked on site

Notes:

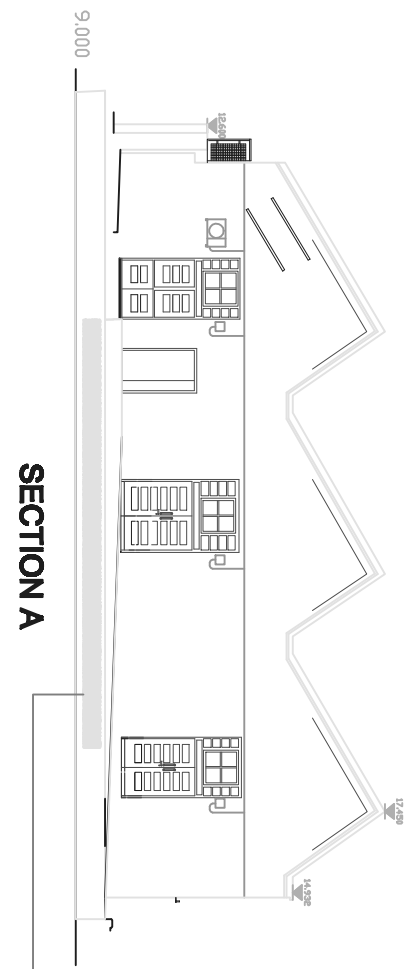


ELEVATION A

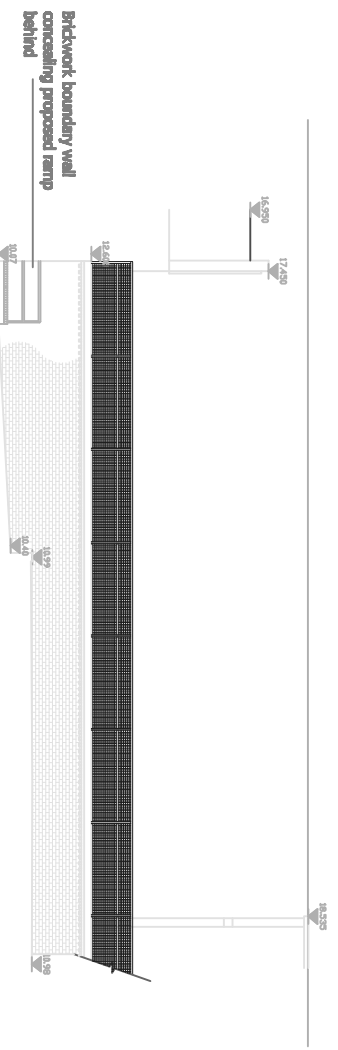


ELEVATION B

Handrail to ramp to be 900mm high, with a mid-rail set at 450mm high.
Handrail to be 45mm round nylon coated, colour Yellow/Orange PAL 2000
Existing brick planters and ramp to be removed for new ramp
Existing ramp to main entrance to be 'weathered in' with adjacent surface.
Ramp approximate length: 8500mm
Ramp rise: 500mm
Ramp gradient: 1:22



SECTION A



ELEVATION C

Proposed Elevations
SCALE 1 : 200 @ A3

Notes:	
Do not scale from this drawing All dimensions to be checked on site	
Amendments:	
REV B - Ramp altered	09/05/14
REV A - Section added	02/05/14
Drawing type: PLANNING	
Client: London Borough of Camden	
Project: Unit 23 43 Carol Street	
Title: Proposed Elevations	
Scale: 1:200 @ A3	Date: 13.03.2014
Drawn: RIM	Checked: JF
Drawn: 120046.08	Rev: B
Watts.	
Watts Group Plc 1 Great Tower Street London EC3N 5AA	T: +44 (0)20 7280 8000 F: +44 (0)20 7280 8001 W: www.watts.co.uk