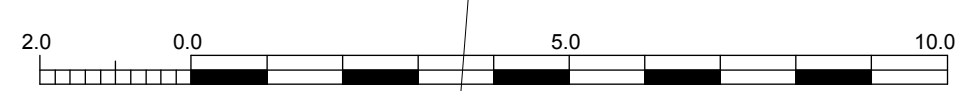
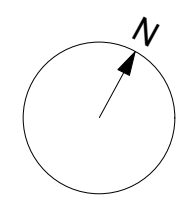


TREE SURVEY in accordance with BS 5837 (2012): "Trees in relation to design, demolition and construction - Recommendations" which specifies the information required for a full tree survey and which is provided on this plan.



Flat 1, Garden Flat, 3 Akenside Rd, NW3 5BS  
Proposed Site Context Plan

Dwg. No. 1234 AP08 Rev B Scale: 1:50 @ A0, 1:100 @ A1 Date 09/05/2014 Rev B  
The Belvedere, 2 Back Lane, Hampstead, London NW3 1HL  
T 020 7794 1234 F 020 7435 5085 E office@charltonbrown.com

12