



# Arboricultural Method Statement

---

2 Mornington Terrace, London

Written By Alastair Gavin On behalf Of Tree Aware UK Ltd

07<sup>th</sup> of May 2014

The purpose of this document is to aid in the protection of the trees on and adjacent to the site as listed above that are being retained throughout the construction process. These trees can easily be protected during this process by clearly setting out tree protection methods, construction techniques and working practices that are appropriate to the site. This document provides appropriate methods in relation to this in line with the recommendations of BS 5837: 2012 “trees in relation to design, demolition and construction – recommendations”.

## Contents

1.0 Summary

2.0 Introduction

3.0 Sequenced Methods of Tree Protection

4.0 Appendix 1 Root Protection Plan

5.0 Appendix 2 Tree Protection Plan

## 1.0 Summary

1.1 The points listed below are explained in more detail in this report and it is intended that this summary is for quick reference only. I advise that the report is read fully before any actions are decided and undertaken. This is in order to avoid breach of the tree protection legislation whether by a planning condition, area planning designation, or specific tree preservation order that may apply to the tree on the site.

1.2 This document will give specific site instructions on the methods required to protect the tree on site. The following is a list of identified protection measures that are appropriate to 2 Mornington Terrace, London in line with the construction/development that is being undertaken there.

### 1 Pre Construction meeting

If specified by the local planning authority a pre construction meeting should be undertaken to run through the Arboricultural Method Statement (AMS) to ensure all parties are familiar with the tree protection measures and what tree is to be retained on the site.

### 2 Execute Tree Works

Details of these tree works are contained within this document and should be undertaken before construction work starts and should be in accordance to BS 3998: 2010 Tree Work – Recommendations.

3 Tree protection

Erection of tree protection fencing or another agreed approach undertaken.

4 Erection/dismantling of scaffolding

Avoiding damage in the erection and dismantling of scaffolding to retained tree.

5 General principles of tree protection

To aid in the effective protection of the tree identified for retention.

## 2.0 Introduction

2.1 The majority of tree roots are found in the top one meter of soil, any work to or in the near proximity to trees can result in root damage. This has the likely result that the tree or trees will suffer decline or perish in the following months/years after construction has finished.

2.2 The following detailed methods are in accordance with BS 5837:2012 “trees in relation to design, demolition, and construction – recommendations” and are designed to aid in the protection of the tree retained on the site.

2.3 An assessment to BS 5837:2012 has been undertaken to the tree and the tree to be retained has been given a root protection area (RPA).

(Please see separate document “Root Protection Plan, 2 Mornington Terrace”)

2.4 The RPA has been used to allow a Construction Exclusion Zone (CEZ) to be designated; this is the area to be protected during development by the use of barriers, ground protection measures, and specialised construction techniques or other agreed measures to ensure the protection of the roots from the development processes.

2.5 The following methods have been designated as appropriate measures for tree protection on this site and are set out in a sequence to which they should be undertaken.

### **3.0 Sequenced Methods of Tree Protection**

#### **3.1 Phase 1 Pre construction meeting**

An onsite meeting will be held if required and if specified by the local planning authority with all relevant parties such as the developer/builder, the appointed arboricultural supervisor, and a representative from the local planning authority. The purpose of this meeting is to agree and record the location of site features and site information such as

- Current tree condition
- Agree tree works (detailed in proposed tree works)
- Locations of site access
- Location of site storage
- The location of tree protection barriers

### 3.2 Phase 2 Execute agreed tree works

The following table lists the proposed tree works which should be agreed by the local planning authority before being undertaken.

<u>Tree reference</u>	<u>Common name</u>	<u>Proposed works</u>	<u>Comments</u>
T1	Cherry	None	This tree is located in the neighbour's property and does not impede into the construction area or site.

### 3.3 Phase 3 Tree Protection Barriers

Tree protection barriers should be erected to protect the construction exclusion zone of the retained tree.

As the root protection area of the tree (RPA) does not encroach in to the site it is deemed that the boundary fence provides an adequate boundary to the root protection area, mitigating the need to erect additional protection fencing.

If there is a requirement to remove the boundary fence the following specification or another agreed approach with the local planning authority should be undertaken.

#### Tree Protection Barrier Specification

The following will be used to form the tree protection fencing at 2 Mornington Terrace if there is a requirement to remove the boundary fence. Heras fencing will be used to form the panels of the fencings with heras fencing blocks used to secure the panels in situ which should be pinned into the ground. The panels will be locked together using heras fencing coupler clips.

Once the barrier is in position it should not be moved and should be considered as a permanent structure on the site until construction is completely finished.

All personnel on the site should be informed of the barriers role in protecting the tree and its importance.

To aid in the protection of the trees and the none admittance to the construction exclusion zone signs should be used. These signs should be clear and straight forward and fixed upon the barrier. An example of the wording is as follows

“CONSTRUCTION EXCLUSION ZONE – NO ACCESS”

#### 3.4 Phase 5 Erection and Dismantling of Scaffolding

If used care should be taken when constructing and dismantling scaffolding not to breach the tree protection area of the tree and not to cause damage to the trees canopy.

#### 3.5 Phase 6 General Principles of Tree Protection

A copy of this Method Statement should be retained on site at all times for ease of reference.

No fires should be lit next to or adjacent to the tree protection barriers. If a fire is required the position on site should be agreed by the appointed, supervising Arboriculturalist.

If heavy plant is required in the construction process such as a crane care should be taken that the any part of the chosen machine does not encroach over the tree protection area.

A designated storage area should be created and the position agreed upon (away from the tree). All materials for construction should be stored in this compound. Care must be taken to avoid any leakages or spillages of toxic materials into the soil. The gradient of the site must be taken into consideration when agreeing the location of the storage area to stop any run off entering the tree protection area.

#### **Additional**

In the event that the appointed contractor is uncertain of the correct cause of action when undertaking construction processes in connection to the development that affects the tree, and or a situation that is unexpected arises that affects the retained tree. The appointed arboricultural supervisor should be contacted and the process discussed and an agreed approach with agreement from the local authority undertaken before work starts.

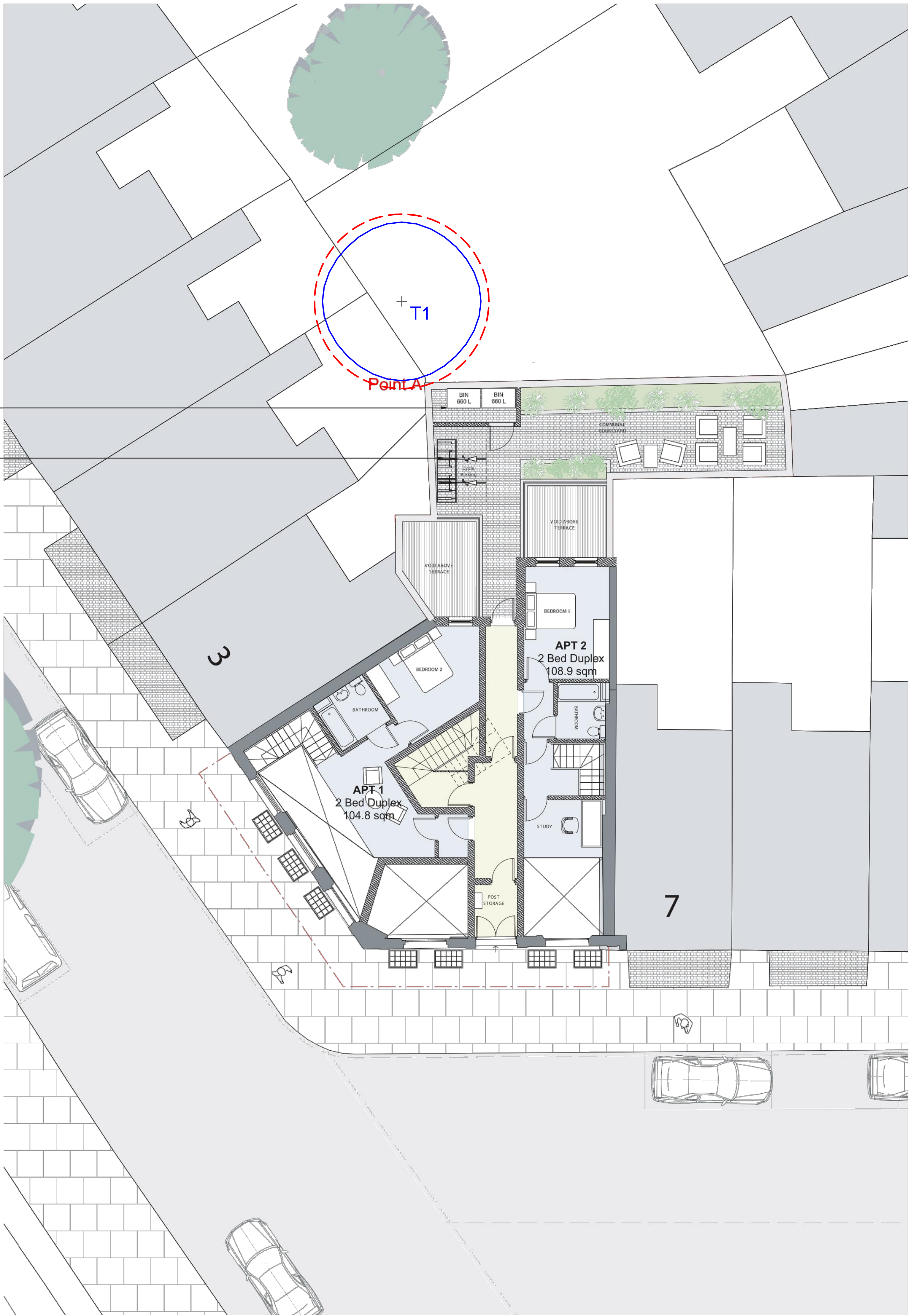


**4.0    Appendix 1            Root Protection Plan**

(Please see separate document)

Refer to Dwg.923/010 for Refuse Enclosure

Refer to Dwg.923/09 for Bicycle Enclosure



Key

- Category A Tree Canopy Spread
- Category B Tree Canopy Spread
- Category C Tree Canopy Spread
- Category U Tree Canopy Spread
- Root Protection Area

REV.	DATE	BY	DESCRIPTION



**TREE AWARE UK LTD**  
Arboricultural Consultancy

CLIENT <b>Tree Aware UK LTD</b>			
TITLE <b>Root Protection Area Plan 2 Mornington Terrace London NW1 7RR</b>			
DRAWN BY MN/CAD	DATE 06/05/14	SCALE 1:100	SHEET SIZE A1
CHECKED BY AG	DATE 06/05/14	APPROVED BY	DATE
DRAWING No. <b>23874-1</b>			REVISION <b>0</b>

**5.0      Appendix 2      Tree Protection Plan**

(Please see separate document)



Refer to Dwg.923/010 for Refuse Enclosure

Refer to Dwg.923/09 for Bicycle Enclosure

Construction materials to be stored away from the trees location

Existing boundary fence acting as existing tree protection fencing

Tree protection fencing in accordance to the AMS to be installed in the following location if boundary fence is to be removed

# Key

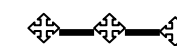
Category A Tree Canopy Spread

Category B Tree Canopy Spread

Category C Tree Canopy Spread

Category U Tree Canopy Spread

Root Protection Area



Tree Protection Fencing

REV.	DATE	BY	DESCRIPTION



**Tree Protection Plan**  
**2 Mornington Terrace**  
**London**  
**NW1 7RR**

MNCAD	06/05/14	1:100	A1
DRAWN BY	AG	DATE	06/05/14
APPROVED BY		DATE	
DRAWING No.	23874-1		REVISION
			0