

Ben Le Mare  
London Borough of Camden  
Town Hall  
Argyle Street  
London  
WC1H 8ND

Plant Protection  
National Grid  
Block 1; Floor 1  
Brick Kiln Street  
Hinckley  
LE10 0NA  
E-mail: [plantprotection@nationalgrid.com](mailto:plantprotection@nationalgrid.com)  
Telephone: +44 (0)800 688588

**National Grid Electricity Emergency Number:  
0800 40 40 90\***

**National Gas Emergency Number:  
0800 111 999\***

\* Available 24 hours, 7 days/week.  
Calls may be recorded and monitored.

[www.nationalgrid.com](http://www.nationalgrid.com)

**Date:** 06/05/2014  
**Our Ref:** NL\_TE\_Z5\_3NW\_001916  
**Your Ref:** 2014/2712/P (MB) P

**RE: Formal Planning Application, NW1 8RP, Land at Hawley Road and Torbay Street, London**

Thank you for your enquiry which was received on 01/05/2014.

Please note this response and any attached map(s) are valid for 28 days.

An assessment has been carried out with respect to National Grid Electricity Transmission plc's and National Grid Gas plc's apparatus. Please note it does not cover the items listed in the section "Your Responsibilities and Obligations", including gas service pipes and related apparatus.

For details of National Grid's network areas please see the National Grid website (<http://www.nationalgrid.com/uk/Gas/Safety/work/>) or the enclosed documentation.

**Are My Works Affected?**

**National Grid has identified that it has apparatus in the vicinity of your enquiry which may be affected by the activities specified.**

**Can you please inform National Grid, as soon as possible, the decision your authority is likely to make regarding this application.**

If the application is refused for any other reason than the presence of National Grid apparatus, we will not take any further action.

Please let us know whether National Grid can provide you with technical or other information that may be of assistance to you in the determination of the application.

**As your proposal is in proximity to National Grid's Transmission assets we have referred your enquiry / consultation to our Land and Development Asset Protection Team for further assessment. We request that you take no further action with regards to your proposal until you hear from us. We will contact you within 28 days from the date of this response. Please contact us if you have not had a response within this time.**

Due to the presence of National Grid apparatus in proximity to the specified area, the contractor should contact National Grid before any works are carried out to ensure our apparatus is not affected by any of the proposed works.

## Your Responsibilities and Obligations

The "Assessment" Section below outlines the detailed requirements that must be followed when planning or undertaking your scheduled activities at this location.

It is your responsibility to ensure that the information you have submitted is accurate and that all relevant documents including links are provided to all persons (either direct labour or contractors) working for you near National Grid's apparatus, e.g. as contained within the Construction (Design and Management) Regulations.

This assessment solely relates to National Grid Electricity Transmission plc (NGET) and National Grid Gas plc (NGG) apparatus. This assessment does **NOT** include:

- National Grid's legal interest (easements or wayleaves) in the land which restricts activity in proximity to National Grid's assets in private land. You must obtain details of any such restrictions from the landowner in the first instance and if in doubt contact National Grid.
- Gas service pipes and related apparatus
- Recently installed apparatus
- Apparatus owned by other organisations, e.g. other gas distribution operators, local electricity companies, other utilities, etc.

It is **YOUR** responsibility to take into account whether the items listed above may be present and if they could be affected by your proposed activities. Further "Essential Guidance" in respect of these items can be found on the National Grid Website (<http://www.nationalgrid.com/NR/rdonlyres/6D6525F9-59EB-4825-BA89-DBD7E68882C7/51319/EssentialGuidance.pdf>).

This communication does not constitute any formal agreement or consent for any proposed development work; either generally or with regard to National Grid's easements or wayleaves nor any planning or building regulations applications.

NGG and NGET or their agents, servants or contractors do not accept any liability for any losses arising under or in connection with this information. This limit on liability applies to all and any claims in contract, tort (including negligence), misrepresentation (excluding fraudulent misrepresentation), breach of statutory duty or otherwise. This limit on liability does not exclude or restrict liability where prohibited by the law nor does it supersede the express terms of any related agreements.

If you require further assistance please contact the National Grid Plant Protection team via e-mail ([click here](#)) or via the contact details at the top of this response.

Yours faithfully

National Grid Plant Protection Team

# ASSESSMENT

## Affected Apparatus

The National Grid apparatus that has been identified as being in the vicinity of your proposed works is:

- Low or Medium pressure (below 2 bar) gas pipes and associated equipment. (As a result it is highly likely that there are gas services and associated apparatus in the vicinity)
- Electricity Transmission underground cables and associated equipment

As your proposal is in proximity to National Grid's apparatus, we have referred your enquiry / consultation to the following department(s) for further assessment:

- Land and Development Asset Protection Team (High Pressure Gas Transmission and Electricity Transmission Apparatus)

We request that you take no further action with regards to your proposal until you hear from the above. We will contact you within 28 days from the date of this response. Please contact us if you have not had a response within this timeframe.

## Requirements

**BEFORE carrying out any work you must:**

- **Refer to the attached cable profile drawings (if any) which provide details about the location of National Grid's high voltage underground cables.**
- Carefully read these requirements including the attached guidance documents and maps showing the location of National Grid apparatus.
- Contact the landowner and ensure any proposed works in private land do not infringe National Grid's legal rights (i.e. easements or wayleaves). If the works are in the road or footpath the relevant local authority should be contacted.
- Ensure that all persons, including direct labour and contractors, working for you on or near National Grid's apparatus follow the requirements of the HSE Guidance Notes HSG47 - 'Avoiding Danger from Underground Services' and GS6 – 'Avoidance of danger from overhead electric power lines'. This guidance can be downloaded free of charge at <http://www.hse.gov.uk>
- In line with the above guidance, verify and establish the actual position of mains, pipes, cables, services and other apparatus on site before any activities are undertaken.

# GUIDANCE

## **Electricity Underground Cables Guidance:**

<http://www.nationalgrid.com/NR/rdonlyres/1174F509-0F16-4B68-8CF6-63FE27919E0A/51895/ElectricityUndergroundCableguidance.pdf>

## **Excavating Safely - Avoiding injury when working near gas pipes:**

[http://www.nationalgrid.com/NR/rdonlyres/2D2EEA97-B213-459C-9A26-18361C6E0B0D/25249/Digsafe\\_leaflet3e2finalamends061207.pdf](http://www.nationalgrid.com/NR/rdonlyres/2D2EEA97-B213-459C-9A26-18361C6E0B0D/25249/Digsafe_leaflet3e2finalamends061207.pdf)

## **Standard Guidance**

### **Essential Guidance document:**

<http://www.nationalgrid.com/NR/rdonlyres/6D6525F9-59EB-4825-BA89-DBD7E68882C7/51319/EssentialGuidance.pdf>

### **General Guidance document:**

<http://www.nationalgrid.com/NR/rdonlyres/55C13C4D-A1AA-4B13-BFDA-1CF59F88B326/51318/GeneralGuidance.pdf>

### **Excavating Safely in the vicinity of gas pipes guidance (Credit card):**

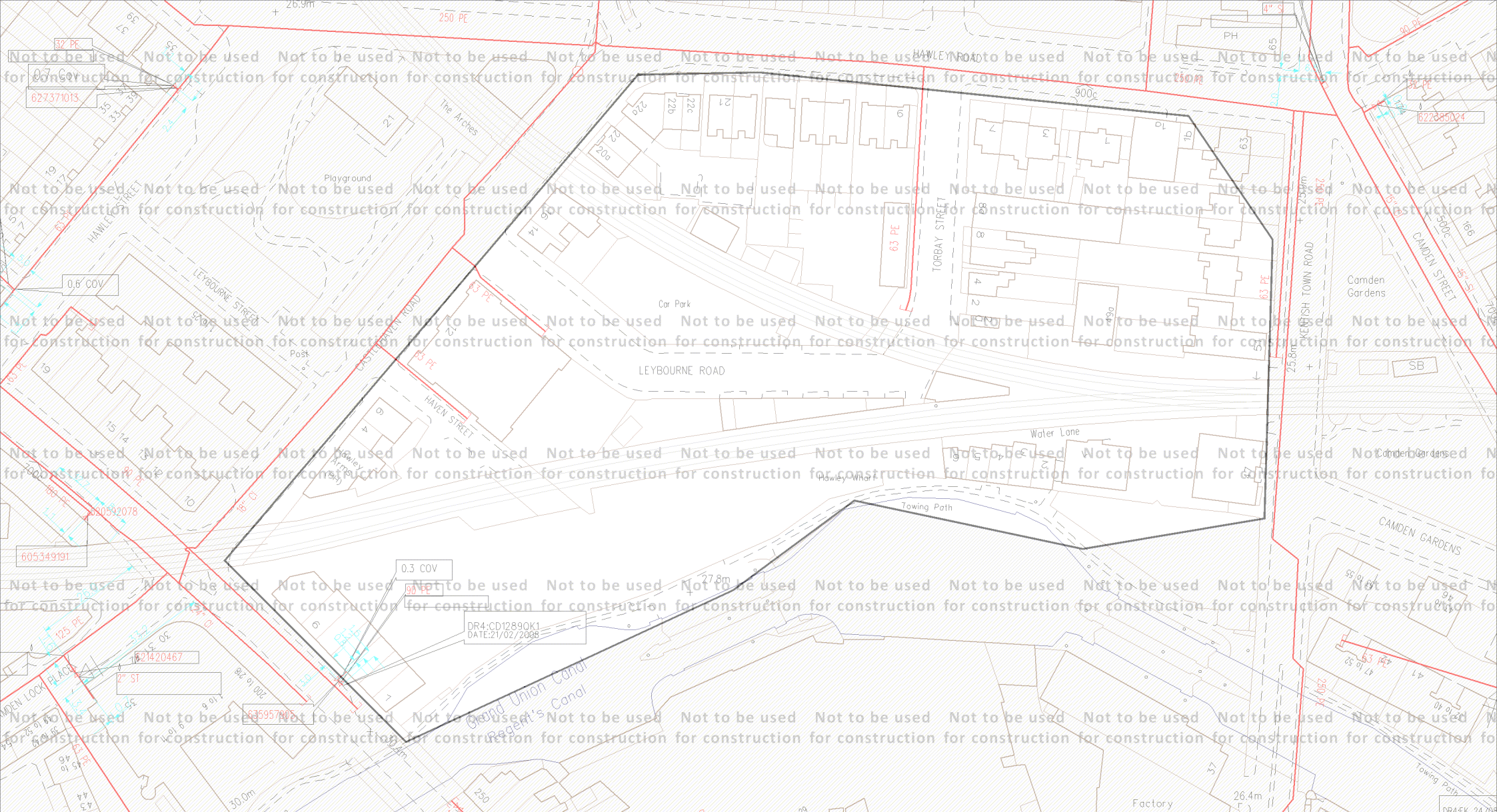
<http://www.nationalgrid.com/NR/rdonlyres/A3D37677-6641-476C-9DDA-E89949052829/44257/ExcavatingSafelyCreditCard.pdf>

### **Excavating Safely in the vicinity of electricity cables guidance (Credit card):**

<http://www.nationalgrid.com/NR/rdonlyres/35DDEC6D-D754-4BA5-AF3C-D607D05A25C2/44858/ExcavatingSafelyCreditCardelectricitycables.pdf>

Copies of all the Guidance Documents can also be downloaded from the National Grid Website:

<http://www.nationalgrid.com/uk/Gas/Safety/work/downloads/>



ID: NL\_TE\_Z5\_3NW\_001916  
 USER: Megann.Branlard  
 DATE: 06/05/2014  
 DATA DATE: 05/05/2014  
 REF: 2014/2712/P (MB) P  
 MAP REF: TQ2884  
 CENTRE: 528816, 184210

View extent: 361m, 196m

LP MAINS	
MP MAINS	
IP MAINS	
LHP MAINS	
NHP MAINS	

0m 25m  
 Approximate scale 1:1250  
 on A4 Colour Landscape

**Do not proceed without further consultation**

This plan shows those pipes owned by National Grid Gas plc in its role as a Licensed Gas Transporter (GT). Gas pipes owned by other GTs, or otherwise privately owned, may be present in this area. Information with regard to such pipes should be obtained from the relevant owners. The information shown on this plan is given without warranty, the accuracy thereof cannot be guaranteed. Service pipes, valves, syphons, stub connections, etc., are not shown but their presence should be anticipated. No liability of any kind whatsoever is accepted by National Grid Gas plc or their agents, servants or contractors for any error or omission. Safe digging practices, in accordance with HS(G)47, must be used to verify and establish the actual position of mains, pipes, services and other apparatus on site before any mechanical plant is used. It is your responsibility to ensure that this information is provided to all persons (either direct labour or contractors) working for you on or near gas apparatus. The information included on this plan should not be referred to beyond a period of 28 days from the date of issue.

Map 1 of 2 (GAS)

MAPS Plot Server Version 1.7.6

Requested by: London Borough of Camden



This plan is reproduced from or based on the OS map by National Grid Gas plc, with the sanction of the controller of HM Stationery Office. Crown Copyright Reserved. Ordnance Survey Licence number 100024886


Valve	Depth of Cover	Syphon	Diameter Change	Material Change
-------	----------------	--------	-----------------	-----------------



ID: NL\_TE\_Z5\_3NW\_001916  
 USER: Megann.Branlard  
 DATE: 06/05/2014  
 DATA DATE: 22/11/2013  
 REF: 2014/2712/P (MB) P  
 MAP REF: TQ2884  
 CENTRE: 528816, 184210

View extent: 723m, 393m

Underground cables   
 Overhead lines 


0m  50m  
 Approximate scale 1:2500  
 on A4 Colour Landscape

**Do not proceed without further consultation**

This plan shows those cables owned by National Grid Electricity Transmission plc in its role as a Licensed Electricity Transporter (ET). Electricity cables owned by other ETs, or otherwise privately owned, may be present in this area. Information with regard to such cables should be obtained from the relevant owners. The information shown on this plan is given without warranty, the accuracy thereof cannot be guaranteed. Ancillary equipment such as cooling systems and communication cables are not shown but their presence should be anticipated. No liability of any kind whatsoever is accepted by National Grid Electricity Transmission plc or their agents, servants or contractors for any error or omission. Safe digging practices, in accordance with HS(G)47, must be used to verify and establish the actual position of cables and other apparatus on site before any mechanical plant is used. It is your responsibility to ensure that this information is provided to all persons (either direct labour or contractors) working for you on or near electricity apparatus. The information included on this plan should not be referred to beyond a period of 28 days from the date of issue.

Map 2 of 2 (ELECTRIC)

MAPS Plot Server Version 1.7.6



Requested by: London Borough of Camden

This plan is reproduced from or based on the OS map by National Grid Electricity Transmission plc, with the sanction of the controller of HM Stationery Office. Crown Copyright Reserved. Ordnance Survey Licence number 100024241

# ENQUIRY SUMMARY

## Received Date

01/05/2014

## Your Reference

2014/2712/P (MB) P

## Location

Centre Point: 528816, 184210

X Extent: 254

Y Extent: 162

Postcode: NW1 8RP

Location Description: NW1 8RP, Land at Hawley Road and Torbay Street, London

## Map Options

Paper Size: A4

Orientation: LANDSCAPE

Requested Scale: 1250

Actual Scale: 1:1250 (GAS), 1:2500 (ELECTRIC)

Real World Extents: 361m x 196m (GAS), 723m x 393m (ELECTRIC)

## Recipients

pprsteam@nationalgrid.com

## Enquirer Details

Organisation Name: London Borough of Camden

Contact Name: Ben Le Mare

Email Address: env.devcon@camden.gov.uk

Telephone: 0207 974 1278

Address: Town Hall, Argyle Street, London, WC1H 8ND

## Description of Works

PA Reserved matters associated with access, appearance, landscaping, layout and scale in respect of a one form entry primary school and nursery in connection with outline planning application granted on 23/1/2013. P

## Enquiry Type

Formal Planning Application

## Development Types

Development Type: Development for use by General Public

Online Standard Details - Windows Internet Explorer

http://planningrecords.camden.gov.uk/Workgate/Planning/Explore/17/General/303/Details.aspx?PT=Planning+Applications+On+Line&TYPE=PLPlanningPK.unis&PAR


File Edit View Favorites Tools Help

Home Contact Aney Enquiry Entry Enquiry Location Details http-public.sabty.gov.uk/... Impact 360 Log In Suggested Sites View Applications Online Web Slice Gallery WebMaps

Online Standard Details

Division East Area Team  
Planning Officer Ben Le Mare  
Determination Level  
Existing Land Use A1 Shop, A3 Restaurants and Cafes, A4 Drinking Establishments, A5 Hot Food Takeaways, B1 Business, B2 General Industry, C3 Dwelling House, Six Genens  
Proposed Land Use A1 Shop, A3 Restaurants and Cafes, A4 Drinking Establishments, A5 Hot Food Takeaways, B1 Business, B2 General Industry, C3 Dwelling House, O2 Assembly and Leisure

Location Map



© Crown Copyright 1999-19725 2014 [Zoom to planning application](#)

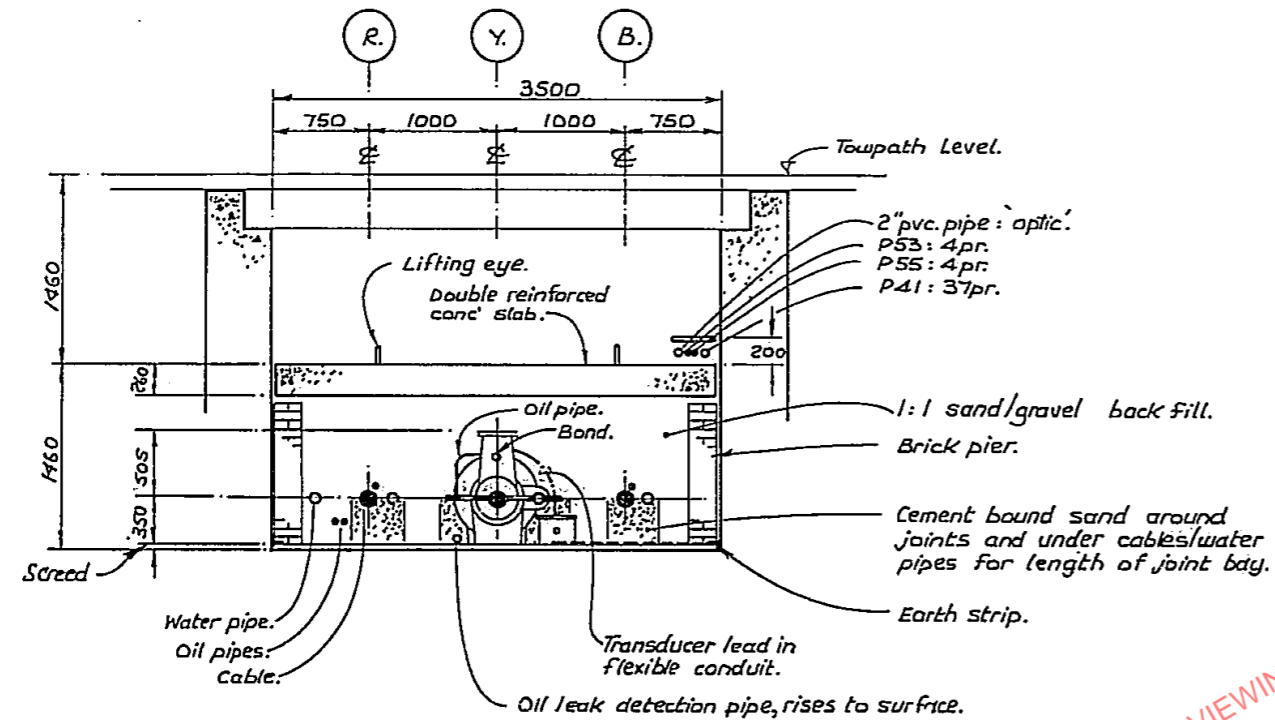
Other Information Available for Planning Application - 2014/2712/P

- [Application Dates](#)
- [Application Checks](#)
- [Application Meetings](#)
- [Application Constraints](#)
- [View Related Documents](#)
- [Consultees Details](#)

Done Internet 100%







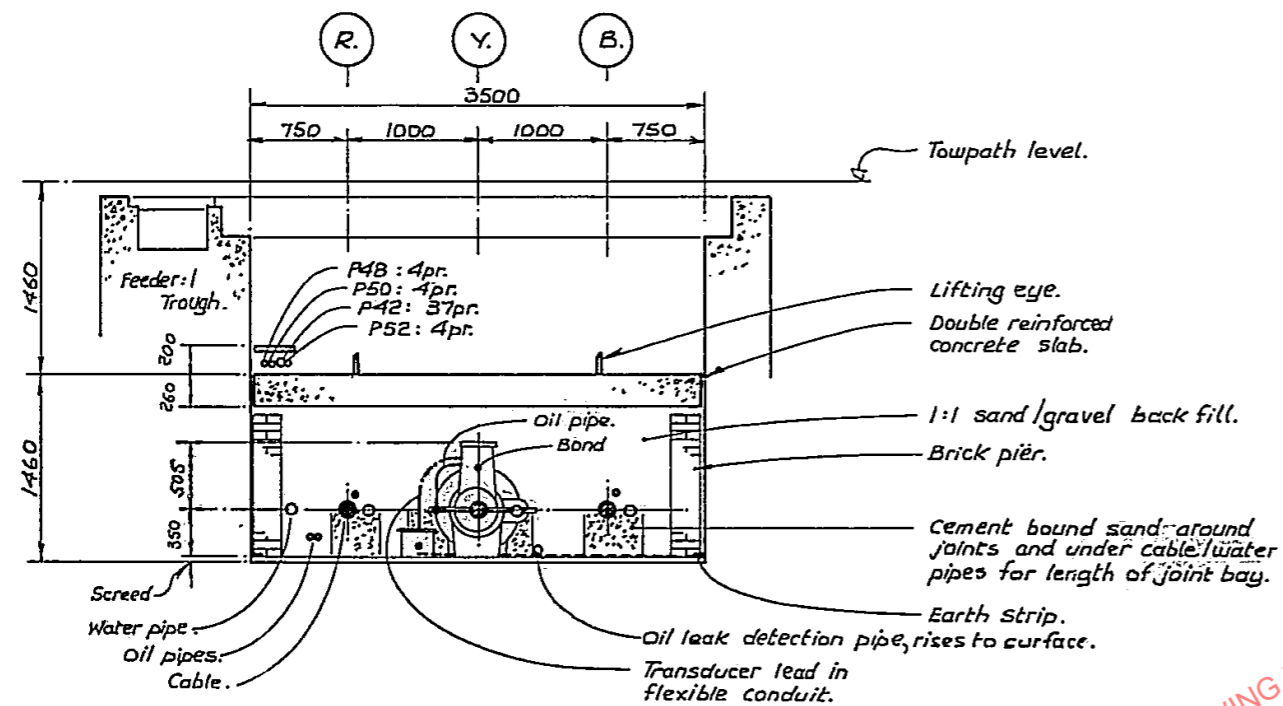
Section 'B-B.' Scale ~ 1:50

For layout of joint bay refer sheet no: 65.

THIS DOCUMENT IS FOR VIEWING PURPOSES ONLY - NOT TO BE TREATED AS THE MASTER DRAWING



THIS DOCUMENT IS FOR VIEWING PURPOSES ONLY - NOT TO BE TREATED AS THE MASTER DRAWING

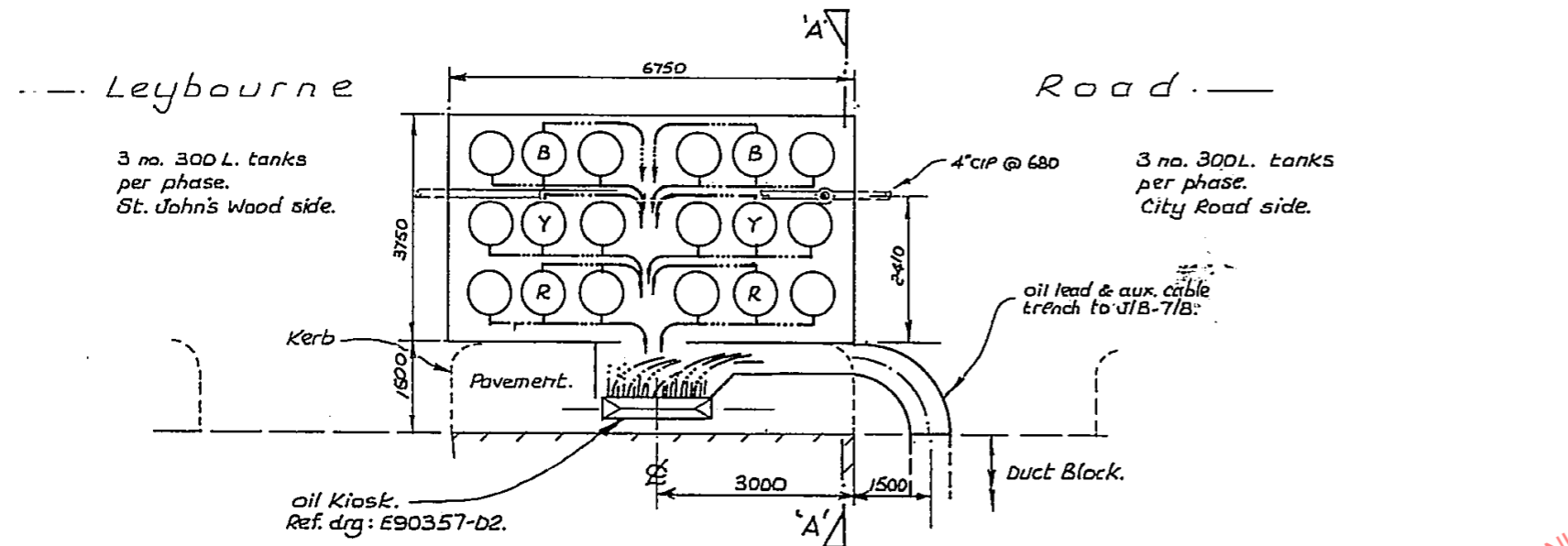


Section 'B-B' Scale ~ 1:50

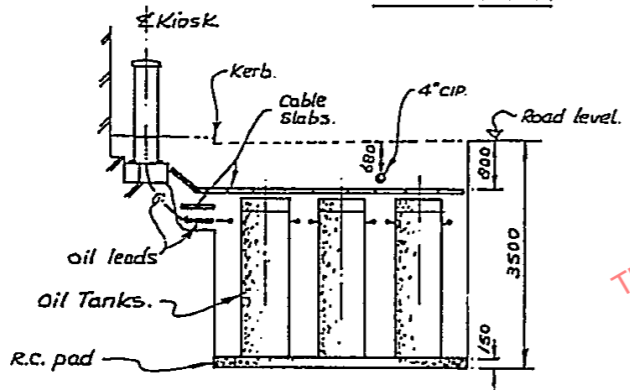
For layout of joint bay refer sheet no: 67.

THIS DOCUMENT IS FOR VIEWING PURPOSES ONLY - NOT TO BE TREATED AS THE MASTER DRAWING

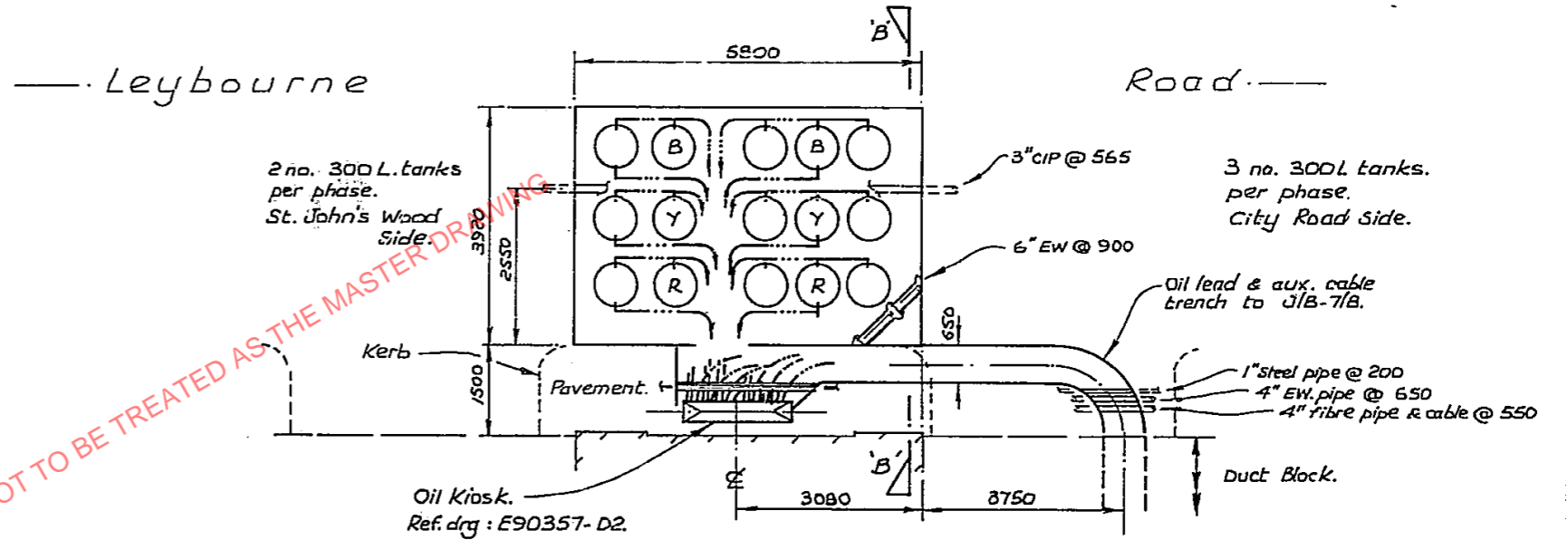
THIS DOCUMENT IS FOR VIEWING PURPOSES ONLY - NOT TO BE TREATED AS THE MASTER DRAWING



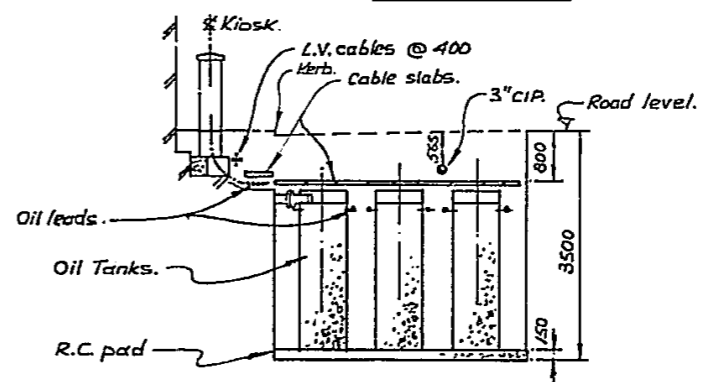
Layout of Oil Tanks. Feeder:2.  
Scale ~ 1:100.



Section 'A-A'  
Scale ~ 1:100



Layout of Oil Tanks. Feeder:1.  
Scale ~ 1:100.



Section 'B-B'  
Scale ~ 1:100.

Ben Le Mare  
London Borough of Camden  
Town Hall  
Argyle Street  
London  
WC1H 8ND

Wayne Smith  
Asset Protection Assistant  
Business & Operation Support  
Gas Transmission Asset Management  
National Grid  
Warwick  
Direct Tel: 01926 656102  
Email: [wayne.smith@nationalgrid.com](mailto:wayne.smith@nationalgrid.com)

### Planning Work?

Contact us on 0800 688 588\*

Mon-Fri 8am-4pm

(\*Calls may be recorded and monitored)

E-mail: [Plantprotection@nationalgrid.com](mailto:Plantprotection@nationalgrid.com)

**Electricity Emergency Number:**

**0800 40 40 90\***

**National Gas Emergency Number:**

**0800 111 999\***

\*Available 24 hours, 7 days/week.

Calls may be recorded and monitored.

[www.nationalgrid.com](http://www.nationalgrid.com)

Date : 16<sup>th</sup> May 2016

Our Reference: NL\_TE\_Z5\_3NW\_001916

Your Reference: 2014/2712/P

Dear Mr Le Mare,

**Ref: Reserved matters associated with access, appearance, landscaping, layout and scale in respect of a one form entry primary school and nursery NW1 8RP, Land at Hawley Road and Torbay Street, London**

National Grid has No Objection to the above proposal which is in close proximity to our high voltage transmission underground cable.

I have enclosed a location map to show the location of National Grid high voltage transmission underground cables within the vicinity of your proposal and associated information below.

Yours sincerely  
Wayne Smith

Asset Protection Assistant

### **EAGLES (Electricity And Gas Location Enquiry System)**

Is now available to use simply click on the link to register [www.beforevoudig.nationalgrid.com](http://www.beforevoudig.nationalgrid.com), submit details of your proposed works and receive instant guidance and if appropriate maps showing the location of National Grid gas and electric apparatus.

### **PLEASE READ CAREFULLY**

- National Grid's underground cables are protected by a Deed of grant; Easement; Wayleave Agreement or the provisions of the New Roads and Street Works Act. Which provide full right of access to retain, maintain, repair and inspect our asset. Hence we require that no permanent structures are to be built over our cables or within the easement strip.
- Ground levels above our cables must not be altered in any way. Any alterations to the depth of our cables will subsequently alter the rating of the circuit and can compromise the reliability, efficiency and safety of our electricity network.
- Copies of the detailed route records for the cable circuit can be supplied on request.
- The detailed route records should not be taken as positive indication of the cable location. This can only be determined by digging trial holes. Where trial holes are dug the concrete and / or polymeric cable protection tiles must not be disturbed.
- The normal recommendation is to keep 2 metres clear either side of the 1 metre wide trench containing the AC cable.
- National Grid should be made aware of the works starting and may put in place a representative to monitor the works. The works should be carried out in accordance with the recommendations in document HS (G) 47 available from the HSE web site..

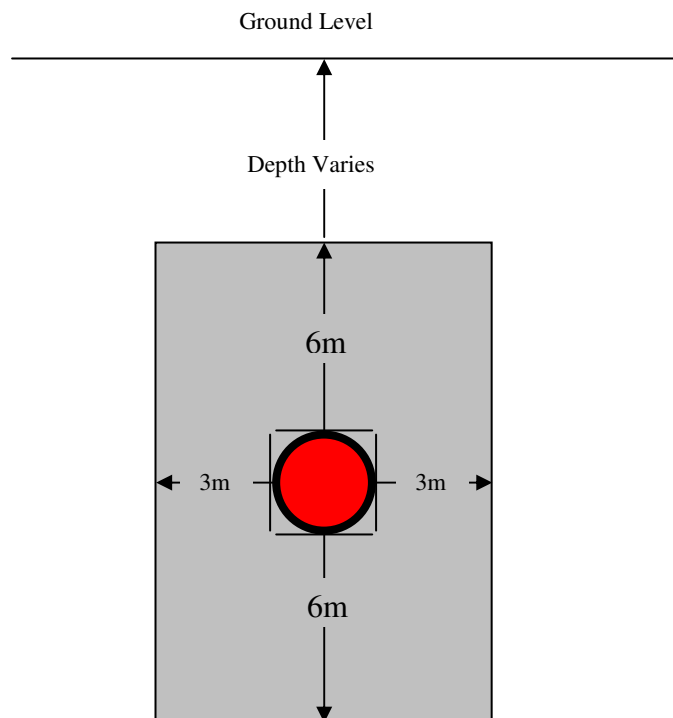
### **Safety Guidance**

- The relocation of existing underground cables is not normally feasible on grounds of cost, operation and maintenance and environmental impact and we believe that successful development can take place in their vicinity.
- The information supplied is given in good faith and only as a guide to the location of our underground cables. The accuracy of this information cannot be guaranteed. The physical presence of such cables may also be evident from physical protection measures such as ducts or concrete protection tiles. The person(s) responsible for planning, supervising and carrying out work in proximity to our cable(s) shall be liable to us, as cable(s) owner, as well as to any third party who may be affected in any way by any loss or damage resulting from their failure to locate and avoid any damage to such a cable(s).
- The relevant guidance in relation to working safely near to existing underground cables is contained within the Health and Safety Executive's ([www.hse.gov.uk](http://www.hse.gov.uk)) Guidance HS(G)47 "Avoiding Danger From Underground Services" and all relevant site staff should make sure that they are both aware of and understand this guidance.
- Our cables are normally buried to a depth of 0.9 metres to the protective covers but this depth can vary depending on location (bridges may have cables 100mm below surface level)..The specific cable route record drawings show further details along the route of the particular cable. The cable route drawings are attached to this letter for your information.
- Cables installed in cable tunnels, whilst less likely to be affected by surface or shallow works may be affected by activities such as piling.
- National Grid assets can be adversely affected by vibration and can provide guidance on the acceptable levels of vibration due to piling and other construction related operations in the vicinity of national grid assets
- Ground cover above our cables should not be reduced or increased without consultation with National Grid.

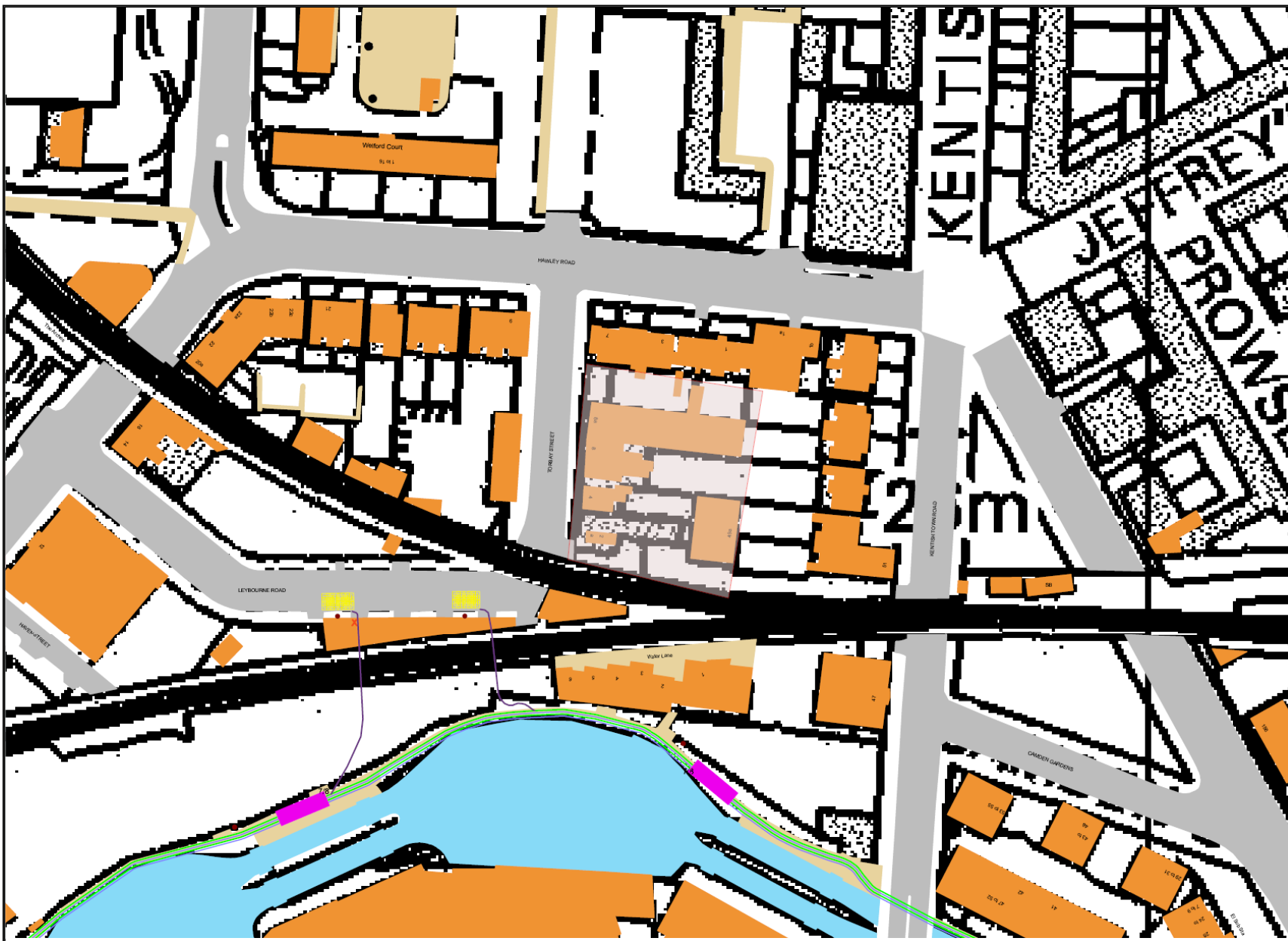
- If a landscaping scheme is proposed as part of the works, we request that no trees and shrubs are planted either directly above or within 3 metres of the existing underground cable, as ultimately the roots may grow to cause damage to the cable.
- To view the National Grid Policy's for our Sense of Place Document. Please use the link below:  
<http://www.nationalgrid.com/uk/LandandDevelopment/DDC/>










### **Cable Tunnels**

- National Grid's underground cable tunnels are protected by the provisions of a Wayleave/Easement or the New Roads and Street Works Act. This provides full right of access to retain, maintain, repair and inspect our asset.
- National Grid requires that the clearances indicated on the plan below are maintained at all times Should it be necessary to enter the exclusion zone discussion/ agreement with National Grid is required to ensure the integrity of their tunnel asset and the high voltage cables is not compromised.
- Ground levels above our cable tunnels must not be altered in any way without prior agreement with National Grid; any alterations to the depth of our tunnels can compromise its integrity which could have an adverse impact on the reliability, efficiency and safety of our electricity network.
- Any works which would create high levels of vibration such as piling would need to be assessed by National Grid to ensure it has limited impact on our cable tunnels. National Grid can advise on acceptable vibration limits.







- Electricity Tx Assets**
- Cables and Accessories**
-  Cables
  -  Decommissioned Cables
  -  Cable Pilot
  -  Cooling Pipe
  -  Joint Bay
  -  Kiosk
  -  Link Box
  -  Oil Tank
  -  Oil Pipe

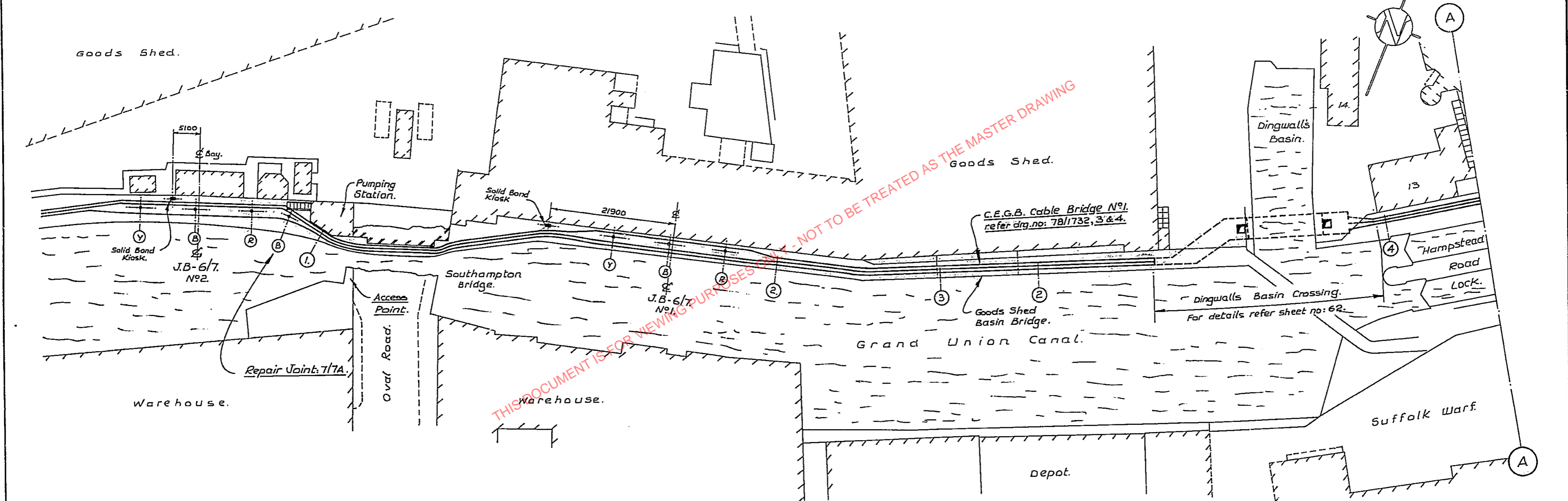
100 m  1 : 1250

Background Mapping information has been reproduced from the Ordnance Survey map by permission of Ordnance Survey on behalf of The controller of Her Majesty's Stationery Office. ©Crown Copyright Ordnance Survey. National Grid Electricity - 100024241. National Grid Gas - 100024886

Produced by 10.34.45.215 12:15 12/05/2014

National Grid UK Transmission. The asset position information represented on this map is the intellectual property of National Grid PLC, Warwick Technology Park, Warwick, CV346DA

THIS DOCUMENT IS FOR VIEWING PURPOSES ONLY - NOT TO BE TREATED AS THE MASTER DRAWING

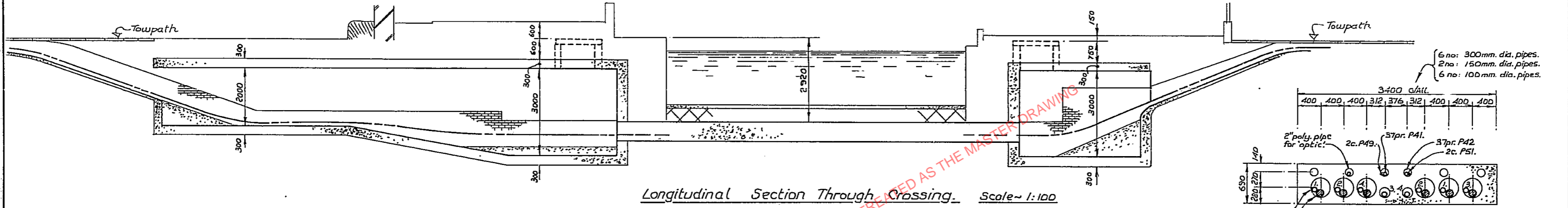


THIS DOCUMENT IS FOR VIEWING PURPOSES ONLY - NOT TO BE TREATED AS THE MASTER DRAWING

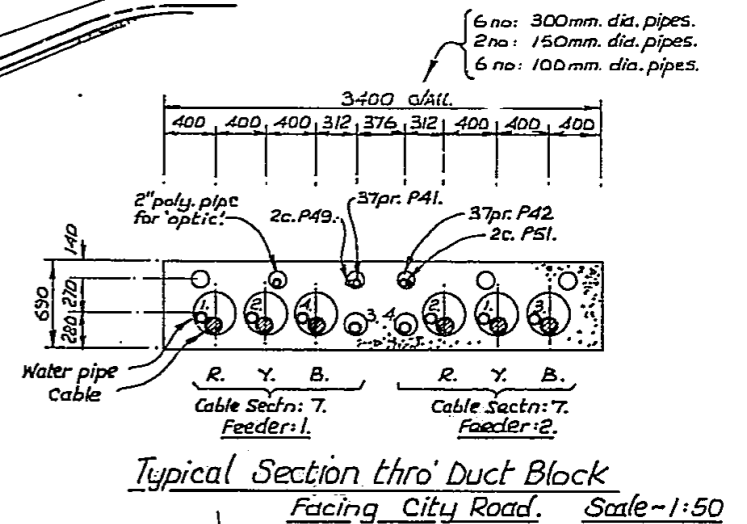
Based on C.E.G.B. drg.no: 16/16/113 rev: C.



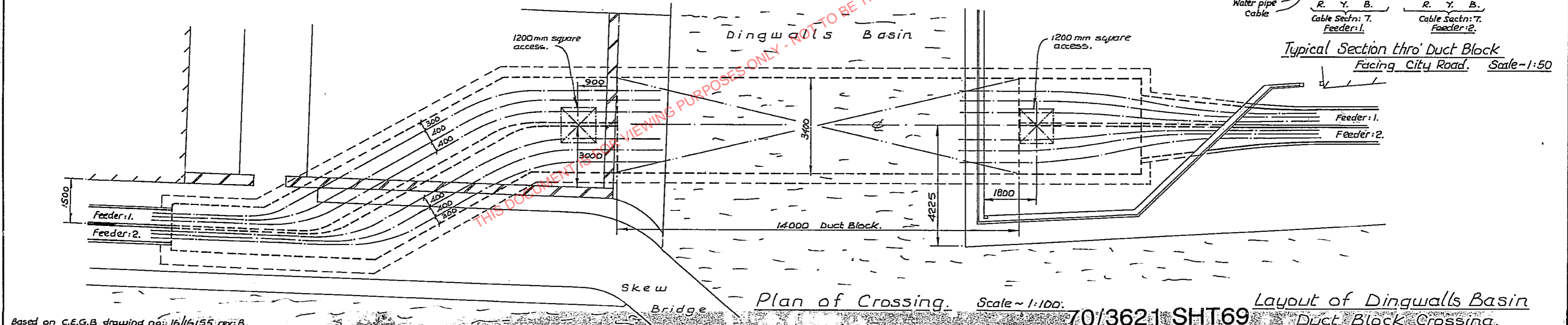
THIS DOCUMENT IS FOR VIEWING PURPOSES ONLY - NOT TO BE TREATED AS THE MASTER DRAWING



*Longitudinal Section Through Crossing. Scale ~ 1:100*



*Typical Section thro' Duct Block Facing City Road. Scale ~ 1:50*

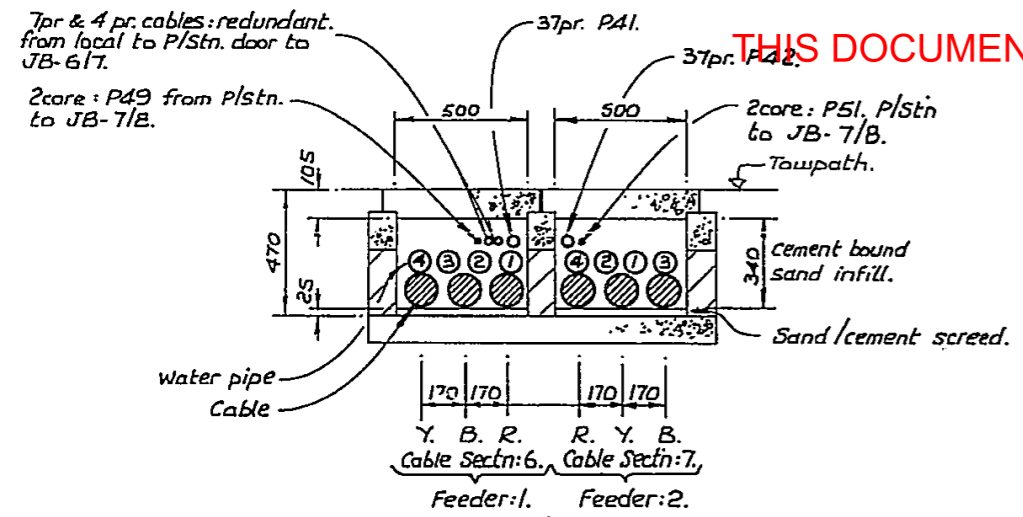


*Plan of Crossing. Scale ~ 1:100*

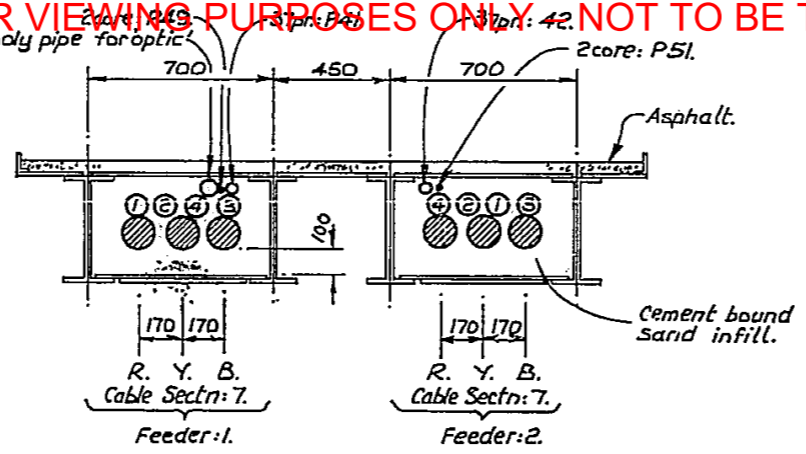
*Layout of Dingwalls Basin Duct Block Crossing*

Based on C.E.G.B. drawing no: 16/16155 rev: B.

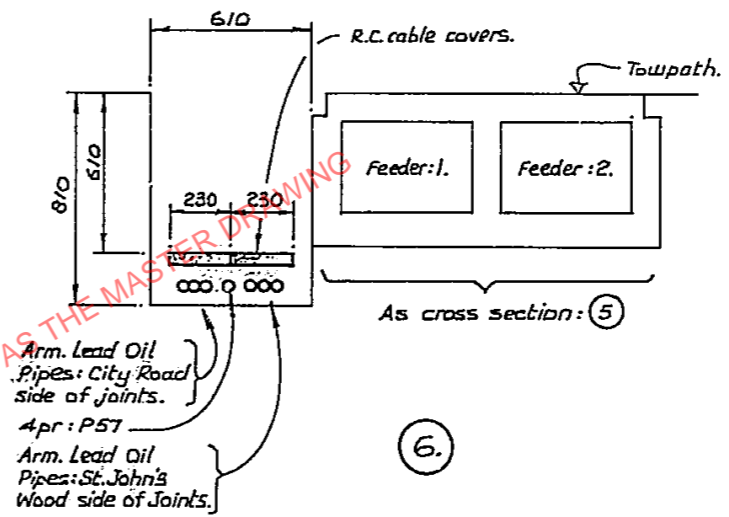
THIS DOCUMENT IS FOR VIEWING PURPOSES ONLY - NOT TO BE TREATED AS THE MASTER DRAWING



1.

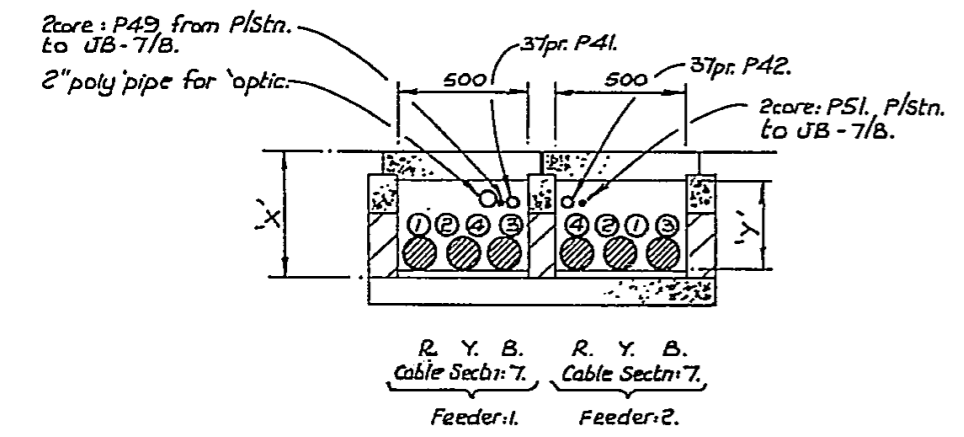


3.



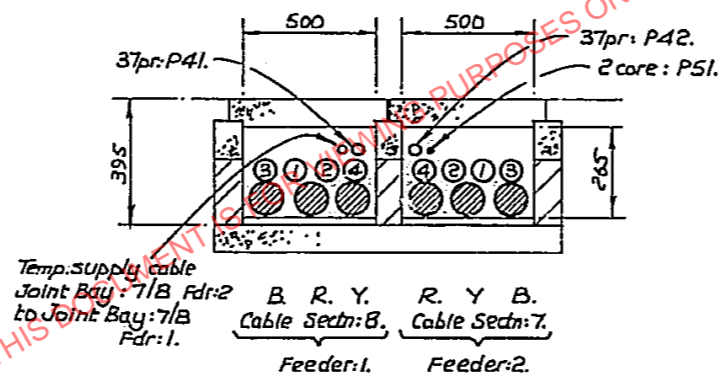
6.

Goods Shed Basin Bridge  
C.E.G.B. Cable Bridge N° 1.  
refer drg. no: 78/1732, 3 & 4.



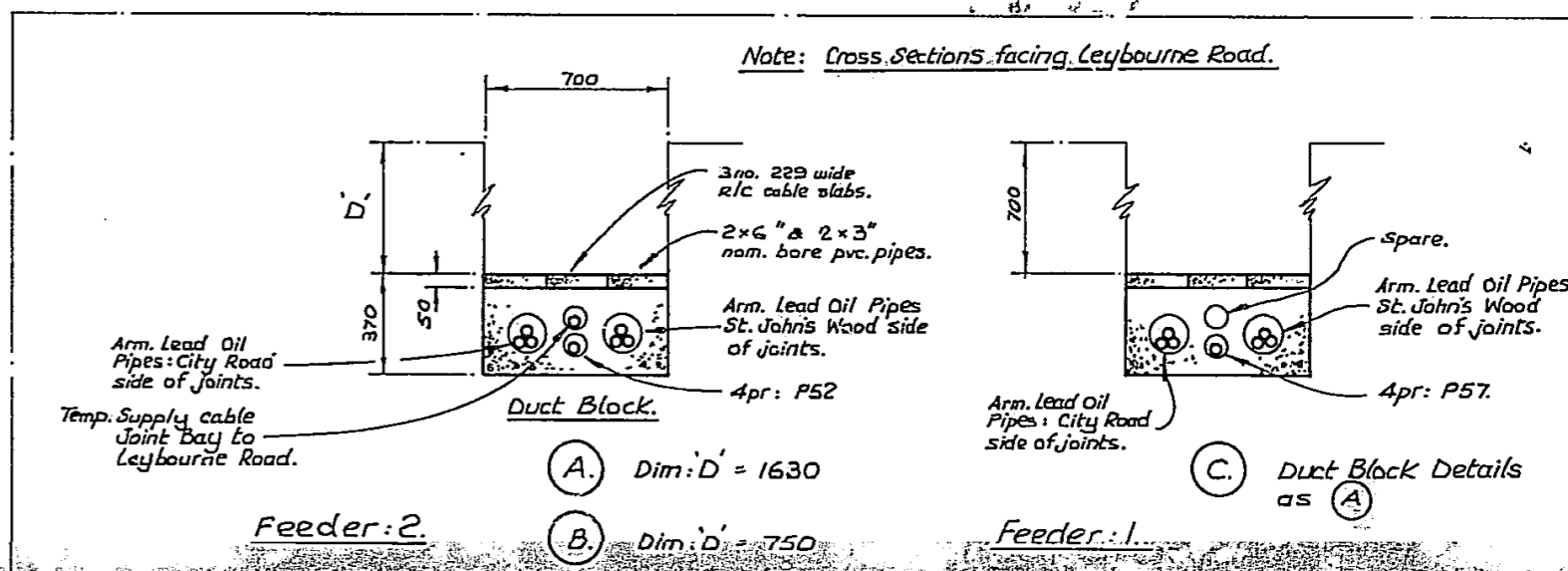
2. Dim: X' = 470  
Dim: Y' = 340

4. Dim: X' = 395  
Dim: Y' = 265



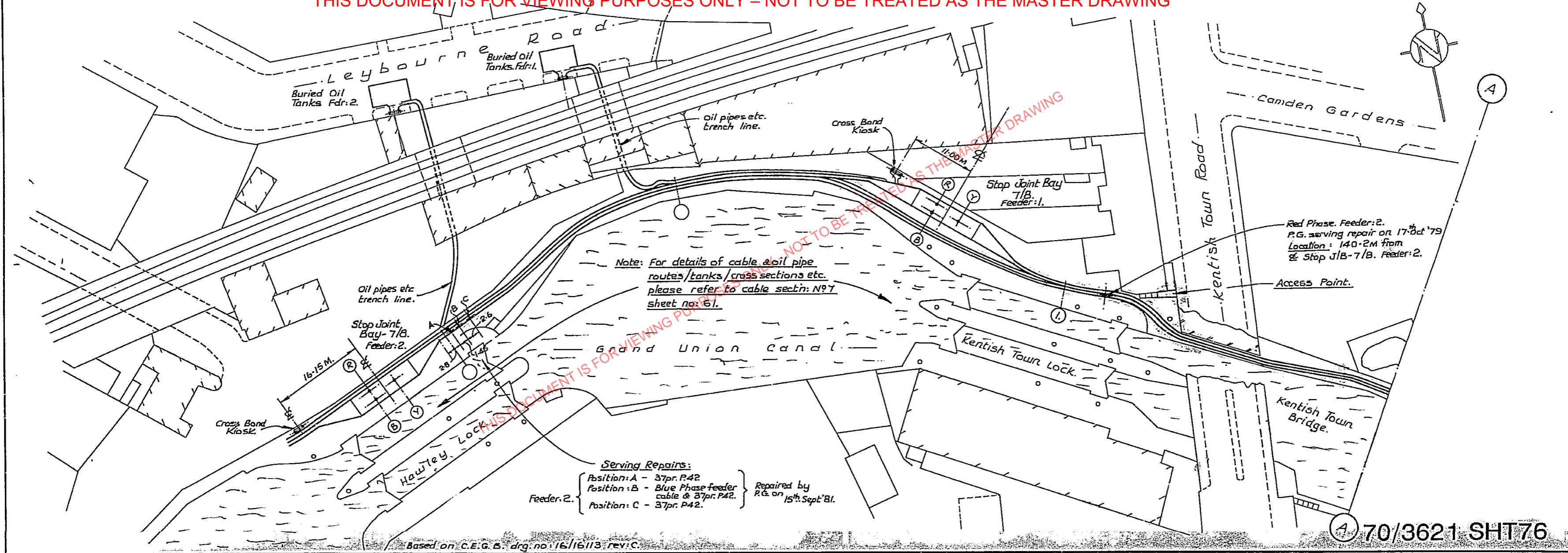
5.

Temp. supply cable Joint Bay: 7/B Fdr: 2 to Joint Bay: 7/B Fdr: 1.



70/3621 SHT 70

THIS DOCUMENT IS FOR VIEWING PURPOSES ONLY - NOT TO BE TREATED AS THE MASTER DRAWING



70/3621 SHT76

Based on C.E.G.B. drg. no: 16/16113 rev: C.

DRAWN BY: A.B.

CHECKED BY: G.W.C.

C.E.G.B. CONTRACT: TC/INT/C5419. ST. JOHN'S WOOD ~ CITY ROAD. 400 kV. O/E CABLES.

CITY ROAD

CABLE SECTION No. B.

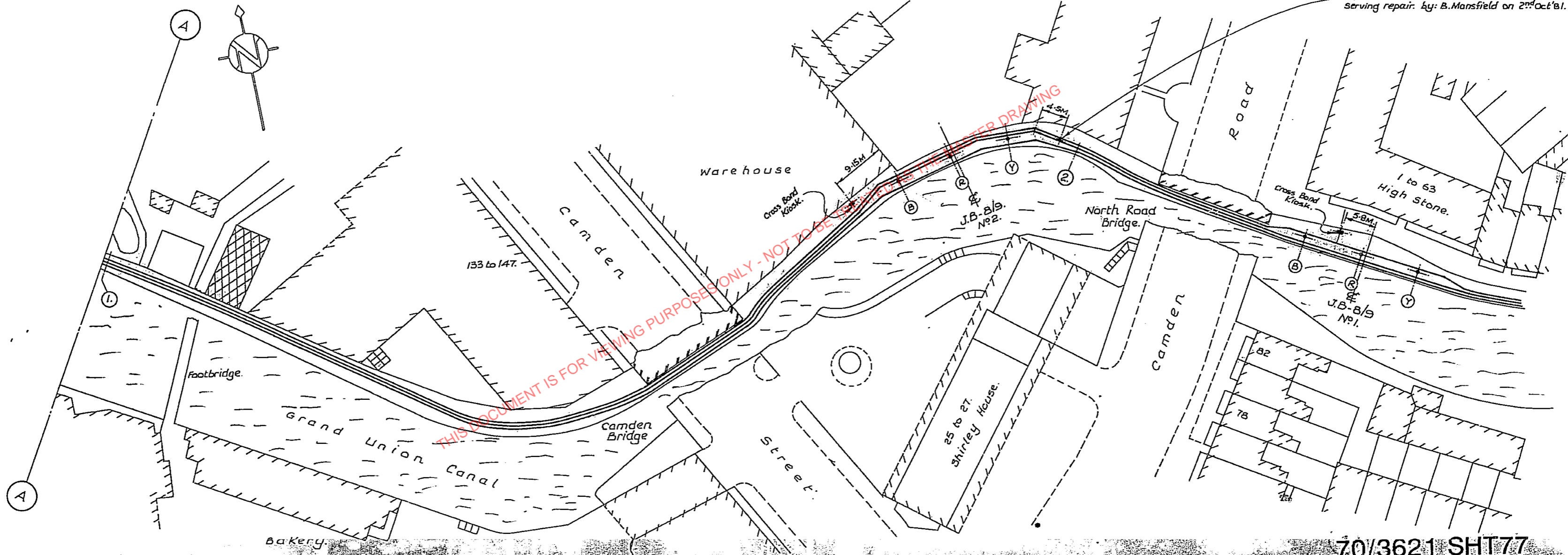
FEEDERS: 1 & 2.

SCALE ~ 1:500

70.

THIS DOCUMENT IS FOR VIEWING PURPOSES ONLY - NOT TO BE TREATED AS THE MASTER DRAWING

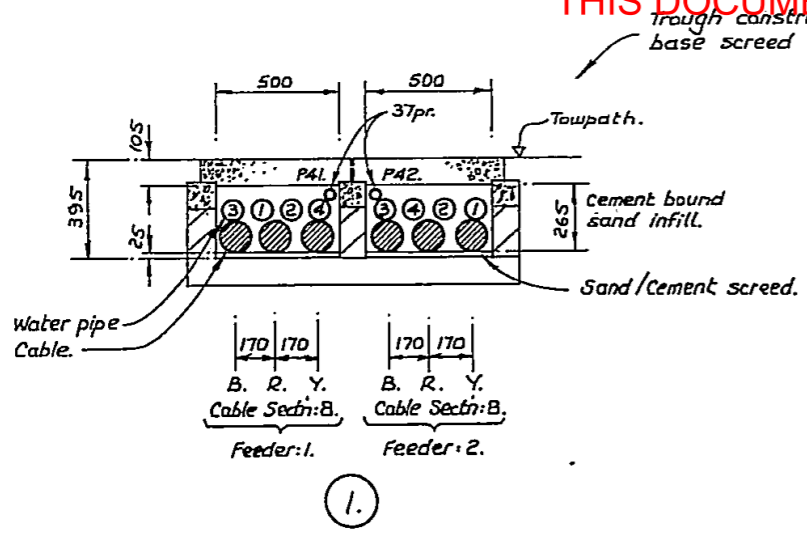
37pr. P41. (Feeder-1)  
Serving repair. by: B. Mansfield on 2<sup>nd</sup> Oct '81.



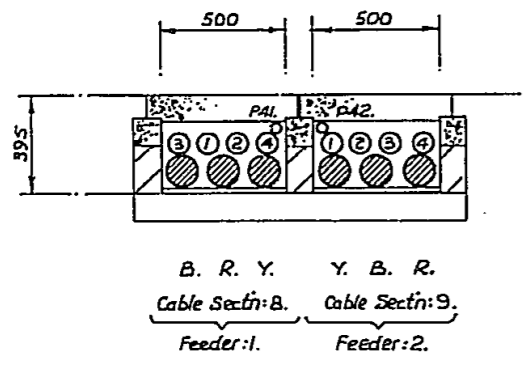
Based on C.E.G.B. drg. no.: 16/16114 rev: C.

70/3621 SHT 77

THIS DOCUMENT IS FOR VIEWING PURPOSES ONLY - NOT TO BE TREATED AS THE MASTER DRAWING



1.



2.

THIS DOCUMENT IS FOR VIEWING PURPOSES ONLY - NOT TO BE TREATED AS THE MASTER DRAWING