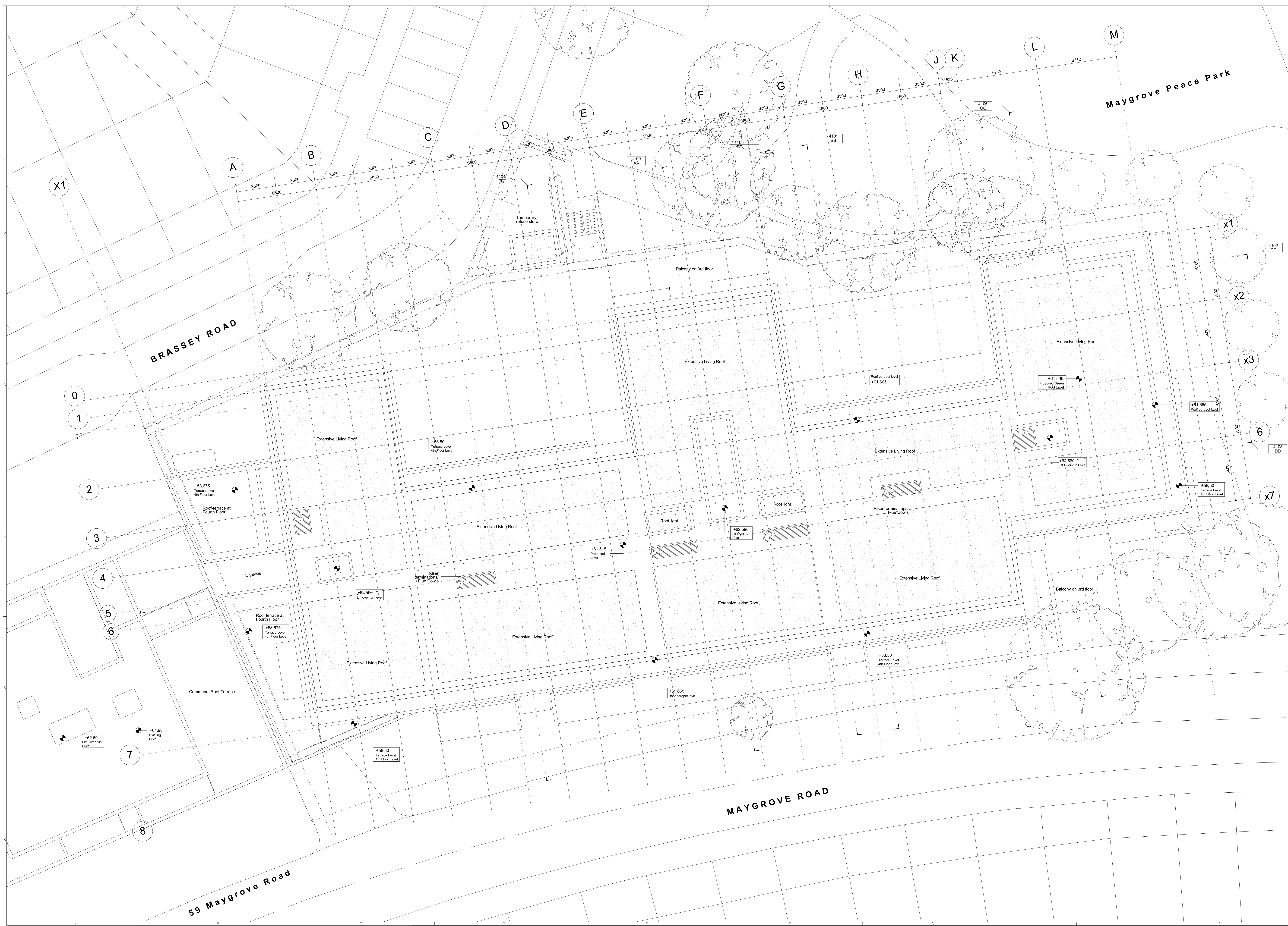


05 - Roof

- General Notes:**
- G1 For Site and Grid setting out refer to AMRH000
 - G2 All dimensions to be checked on site
 - G3 Any discrepancies between drawings to be reported to the Architect immediately.
 - G4 All Levels are above Ordnance Datum (AOD)

New Levels are shown thus:	(Symbol)
Existing Levels are shown thus:	(Symbol)
Retained Existing Levels:	(Symbol)
 - G5 Use figured dimensions only. Do not scale from drawings. IF IN DOUBT, ASK.
 - G6 Refer to Structural Engineers drawings for all structural and services information.
 - G7 For tolerances see the Design Drawings and Specifications.
 - G8 For elements of work subject to Contractor's Design, this drawing is indicative of the visual & performance requirements only. The Contractor is responsible for the detailed design and coordination of the installation within the parameters defined in the specification, design drawings, contract terms and contract documents.
 - G9 Room numbers are shown thus: (Symbol)
 - G10 Door(D) & Window(W) References are shown thus: (Symbol)
 - G11 Clear height is shown thus: (Symbol)
 - G12 Floor Reference shown thus: (Symbol)
 - G13 Finishes are shown thus: (Symbol)
 - G14 Setting Out Points shown thus: (Symbol)
 - G15 Refer to AMRH000 for T Sheet references, and AMRH000 for Architectural Specifications.



Work Package	Cost Check	Info/Briefing	Tender	Contract	Construction	Date	Revision	Description	Approved by	Date	Revision	Description	Approved by	Date	Rev.	Revision	Approved by
						11.10.2012	A	Issued under Memo 0010 for design team co-ordination	ST								
						15.10.2012	B	Issued under Memo 0014 for Cambion Planners	ST								
						26.10.2012	C	Issued under Memo 0023 for Planning Application	ST								
						30.10.2012	C	Issued under Memo 0025 for Planning Application	ST								
						01.11.2012	C	Issued for planning application: memo 100	ST								
						27.11.2012	D	Issued under Memo 0036 for Ecology / Planning Issues	ST								
						10.12.2012	E	Issued under Memo 0038: Updated memo to London Borough of Camden	ST								
						27.05.2014	F	Issued under Memo 168: Minor material amendment submitted to LBC	ST								

Project	Maygrove Road Housing
Subject	Proposed Roof Plan GA Plan
Architects	Hopkins Architects Partnership LLP 27 Brassey Terrace, London, NW1 6LG T: 020 7724 1751 E: info@hopkins.co.uk

Sort Code	AMRH	Drawing Number	3105	Rev.	F
Date	10.12.2012	Scale	1:200	at A2	