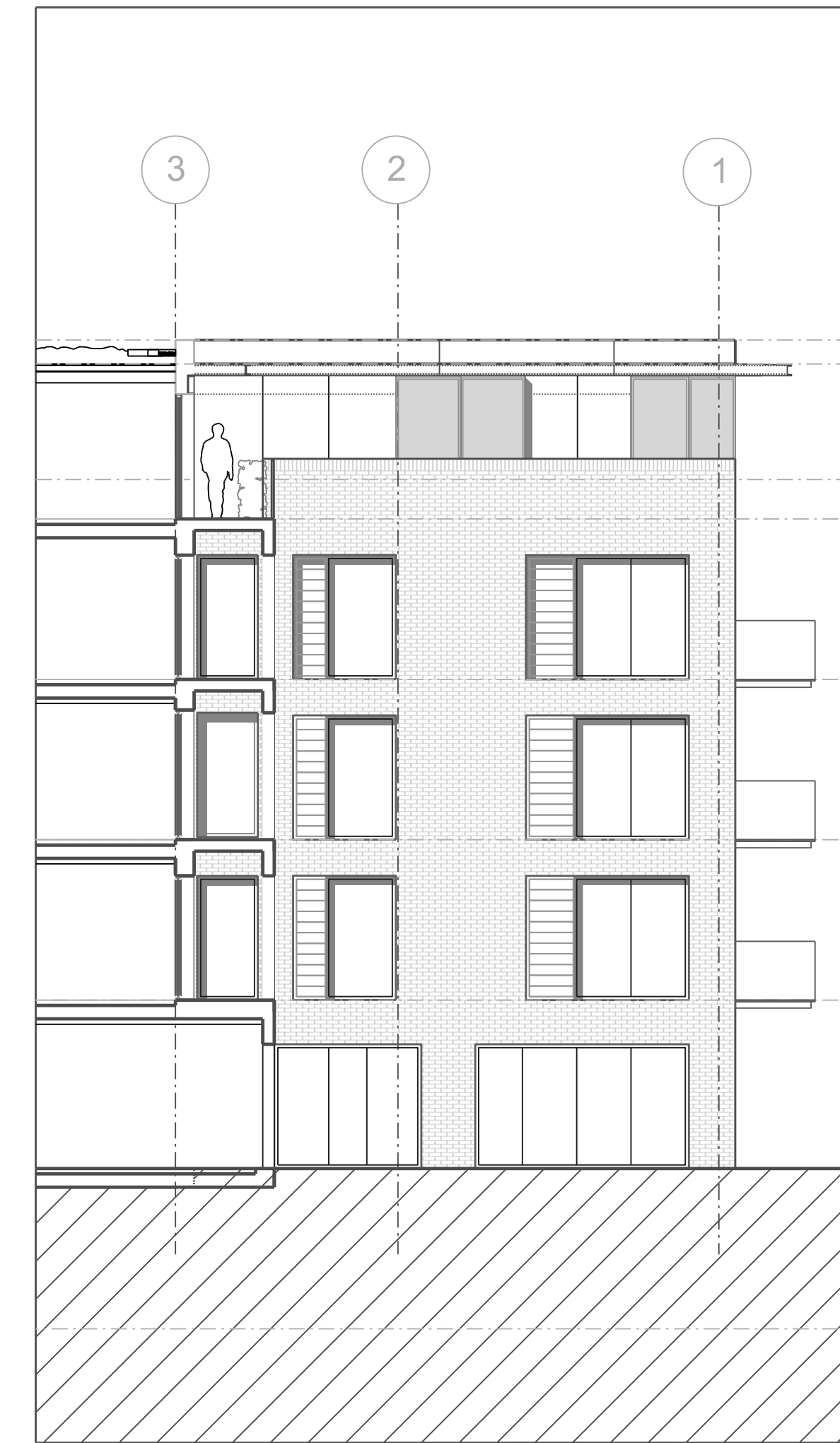


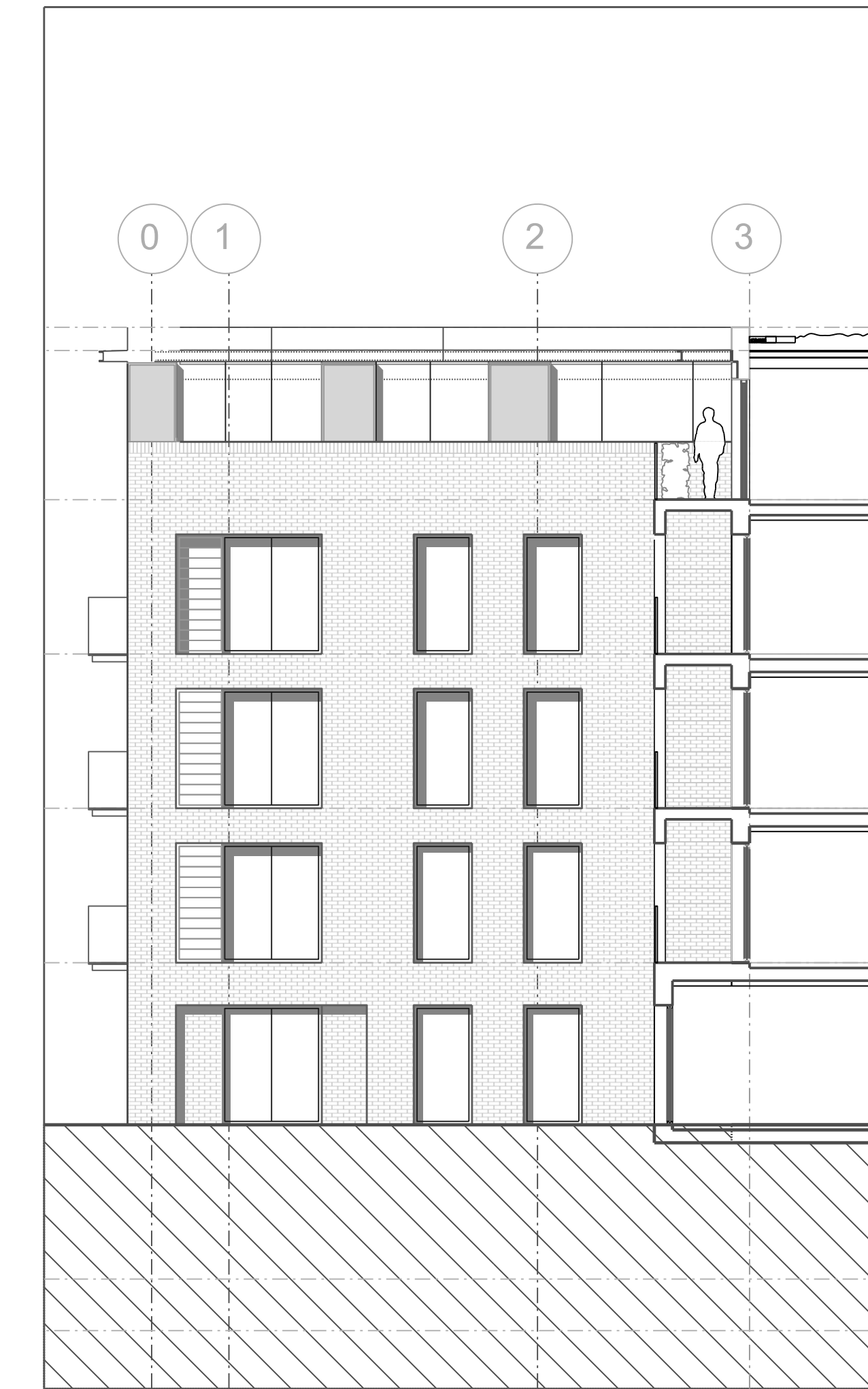


A4001  
CC East Elevation

Parapet	FFL +61.665
Roof	FFL +61.515
L04	FFL +58.500
L03	FFL +55.550
L02	FFL +52.600
L01	FFL +49.650
L00	FFL +46.500
Lower duplex level	FFL +43.550
Basement level	FFL +42.500



A4001  
DD At GL C looking west



A4001  
EE At GL J looking east

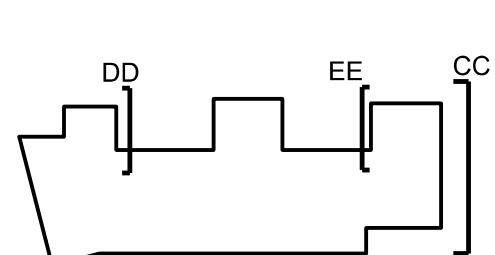
General Notes:

- G1 For Site and G&S setting out refer to AMRH000
- G2 All dimensions to be checked on site
- G3 Any discrepancies between drawings to be reported to the Architect immediately.
- G4 All Levels are above Ordnance datum (AOD)
  - New Levels are shown thus: +20.345
  - Existing Levels are shown thus: EX+20.345
  - Retained Existing Levels: EX+20.345
- G5 Use Square dimensions only. Do not scale from drawings. IF IN DOUBT, ASK.
- G6 Refer to Structural Engineers drawings for all structural and services information.
- G7 For dimensions see the Design Drawings and Specifications.
- G8 For elements of work subject to Contractor's Design, this drawing is indicative of the visual & performance requirements only. The Contractor is responsible for the detailed design and coordination of the installation within the parameters defined in the specification, design drawings, contract terms and contract documents.
- G9 Room numbers are shown thus: 105
- G10 Door(D) & Window (W) References are shown thus: D10
- G11 Clear height is shown thus: (Finished floor to finished soffit) 2700
- G12 T Sheet Reference shown thus: T10
- G13 Finishes are shown thus: F10
- G14 Setting Out Points shown thus: SCP
- G15 Refer to AMRH000 for T Sheet references, and to AMRH000 for Architectural Specifications.

MATERIALS KEY

- Brickwork
- Glazing
- Metal Panel
- Timber Panel
- Metal Frame
- Recess

Note:  
North and South elevations are unchanged since Planning



Work Package	Cost Check	Info/Modeling	Tender	Contract	Construction	Date	Revision	Description	Approved by	Date	Revision	Description	Approved by	Date	Revision	Approved by	Project	Subject	Sort Code	Drawing Number	Rev.	
						11.10.2012	A	Issued for design team coordination Memo 10		27.05.2014	H	Issued under Memo 168: Minor material amendment submitted to LBC					Maygrove Road Housing	Proposed East + West Elevations	AMRH	4001	H	
						17.10.2012	B	Issued for valuation Memo 018														
						26.10.2012	C	Issued under memo 022 for Planning Application														
						30.10.2012	C	Issued for Planning Application Memo 025														
						01.11.2012	D	Revised drawings Memo 028														
						02.11.2012	E	Revised drawings Memo 028														
						03.11.2012	C	Revised for Planning Application memo 030														
						07.12.2012	F	Issued under Memo 037: Update issue to London Borough Council														
						09.01.2013	G	Issued under Memo 046: Updated to LBC Comments														