

B01

General Notes:

- G1 For Site and GIS setting out refer to AMRH000
- G2 All dimensions to be checked on site
- G3 Any discrepancies between drawings to be reported to the Architect immediately.
- G4 All Levels are above Ordnance datum (AOD)

New Levels are shown thus:	(20) 345
Existing Levels are shown thus:	(20) 345
Retained Existing Levels:	EX-20.345
- G5 Use figured dimensions only. Do not scale from drawings. If in DOUBT, ASK.
- G6 Refer to Structural Engineers drawings for all structural and services information.
- G7 For tolerances see the Design Drawings and Specifications
- G8 For elements of work subject to Contractor's Design, this drawing is indicative of the visual & performance requirements only. The Contractor is responsible for the detailed design and co-ordination of the installation within the parameters defined in the specification, design drawings, contract terms and contract documents.
- G9 Room numbers are shown thus:

15

- G10 Door(D) & Window (W) References are shown thus:

15

- G11 Clear height is shown thus (Finished floor to finished soffit)

< 270

- G12 T Sheet Reference shown thus:

270

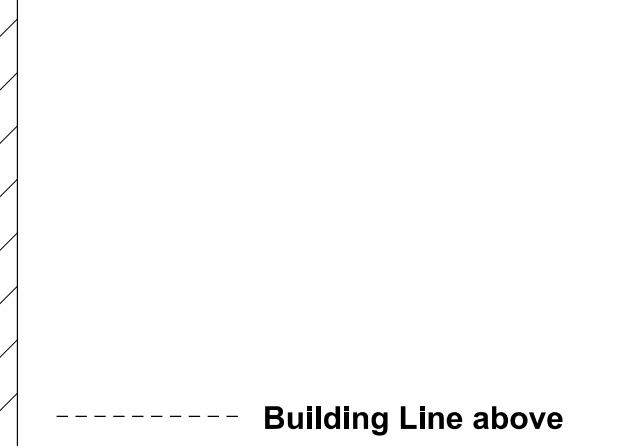
- G13 Finishes are shown thus:

85241

- G14 Setting Out Points shown thus:

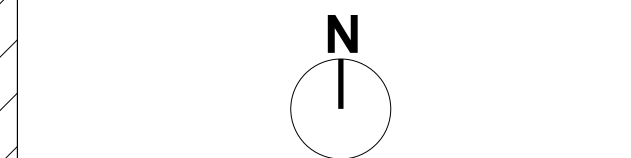
SCP

- G15 Refer to AMRH000 for T Sheet references, and to AMRH000 for Architectural Specifications.



Building Line above

Overall Car - Park GIA - 770 m2
Ventilation Area - 61 m2
(8% of GIA)



Work Package	Cost Check	Info/Noting	Tender	Contract	Construction	Date	Revision	Description	Approved by	Date	Revision	Description	Approved by	Date	Revision	Approved by	Project	Subject	Sort Code	Drawing Number	Rev.		
						02.10.2012	A	Issued under Memo 004 - In Progress Floor Plan Issue	ST	02.11.2012	N	Revised for planning application memo 000	ST				Maygrove Road Housing	Proposed Basement Floor Plan	AMRH	3099	P		
						05.10.2012	B	Issued under Memo 006 for NIA area check	ST	26.11.2012	J	Issued under Memo 006 for Thames Water Issue	ST										
						11.10.2012	C	Issued under Memo 005 for design team coordination	ST	07.12.2012	K	Issued under Memo 007 - Updated Revise to LBC	ST										
						15.10.2012	D	Issued under Memo 004 for Common Planters	ST	02.01.2013	L	Issued under Memo 002 - Revision of Flat Labels	ST										
						26.10.2012	E	Issued under Memo 004 for Lighting Comments	ST	02.01.2013	M	Issued under Memo 003 - Updated Basement	ST										
						26.10.2012	F	Issued under Memo 003 for Planning Application	ST	09.01.2013	N	Issued under Memo 004 - Updated to LBC Comments	ST										
						30.10.2012	G	Issued for information to rights of light	ST	27.09.2014	P	Issued under Memo 100 - Minor material amendment submitted to LBC	ST										
						30.10.2012	H	Issued for Planning Application - Memo 025	ST														
						01.11.2012	I	Revised drawings - Memo 026	ST														

© Copyright Hopkins Architects Partnership LLP. Registered in England number: DC35976. Registered address: 27 Broadley Terrace London NW1 6LG. Use Figured Dimensions Only. All Dimensions to be checked on site. Original Drawing Size A2