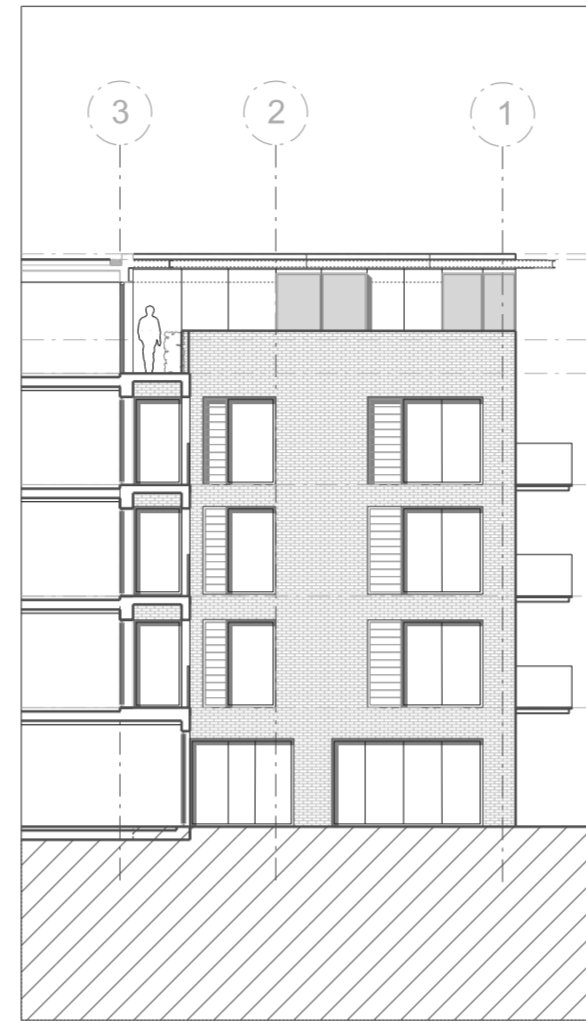




A4001 East Elevation  
CC

Parapet	Roof
FFL +61.665	FFL +61.515
L04	FFL +58.500
L03	FFL +55.550
L02	FFL +52.600
L01	FFL +49.650
L00	FFL +46.500
Lower duplex level	FFL +43.550
Basement level	FFL +42.500



A4001 At GL C looking west  
DD

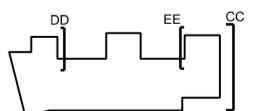


A4001 At GL J looking east  
EE

- General Notes:**
- G1 For Site and GIS setting out refer to AMRH000
  - G2 All dimensions to be checked on site
  - G3 Any discrepancies between drawings to be reported to the Architect immediately.
  - G4 All Levels are above entrance datum (AOD)
    - New Levels are shown thus: -20.345
    - Existing Levels are shown thus: EA+00.345
    - Finished Existing Levels: EA+20.345
  - G5 Use Square dimensions only. Do not scale from drawings. If IN CONFLICT, USE.
  - G6 Refer to Structural Engineers drawings for all structural and services information.
  - G7 For references see the Design Drawings and Specifications.
  - G8 For elements of work subject to Contractor's design, this drawing is indicative of the finish & performance requirements only. The Contractor is responsible for the detailed design and coordination of the installation with the parameters defined in the specification, design drawings, contract terms and contract documents.
  - G9 Room numbers are shown thus: 118
  - G10 Door(D) & Window(W) References are shown thus: 118
  - G11 Clear height is shown thus: 2700
  - G12 T Sheet Reference shown thus: M001
  - G13 Finishes are shown thus: 118
  - G14 Setting Out Points shown thus: 118
  - G15 Refer to AMRH0100 for T Sheet references, and to AMRH0102 for Architectural Specifications.

**MATERIALS KEY**

Brickwork	
Glazing	
Metal Panel	
Timber Panel	
Metal Frame	
Recess	



Work Package	Cost Check	Modeling	Tender	Contract	Construction	Date	Revision	Description	Date	Rev.	Revision	Project	Sort Code	Drawing Number	Rev.
						11.10.2012	A	Issued for design team coordination. Memo 10				Maygrove Road Housing	AMRH	4001	G
						17.10.2012	B	Issued for valuation. Memo 216				Proposed East + West Elevations			
						26.10.2012	C	Issued under memo 021 for Planning Application							
						30.10.2012	G	Issued for Planning Application. Memo 025							
						01.11.2012	D	Revised drawing. Memo 028							
						02.11.2012	E	Revised drawing. Memo 028							
						03.11.2012	E	Revised for Planning Application memo 028							
						07.12.2012	F	Issued under Memo 025. Update issues to London Borough Council							
						08.01.2013	G	Issued under Memo 045. Updated to LBC Comments							

Copyright Hopkin Architects Partnership LLP. Registered in England number OC356976. Registered address: 27 Broadway, Temple London NW1 8LG. Use Figure Dimensions Only. All dimensions to be checked on site. Original Drawing Size A2

Architects: Hopkin Architects Partnership LLP, 27 Broadway, Temple, London, NW1 8LG, T: 00 7724 1751, E: mail@hopkin.co.uk

Date: 09.01.2013 Scale: 1:100 at A2