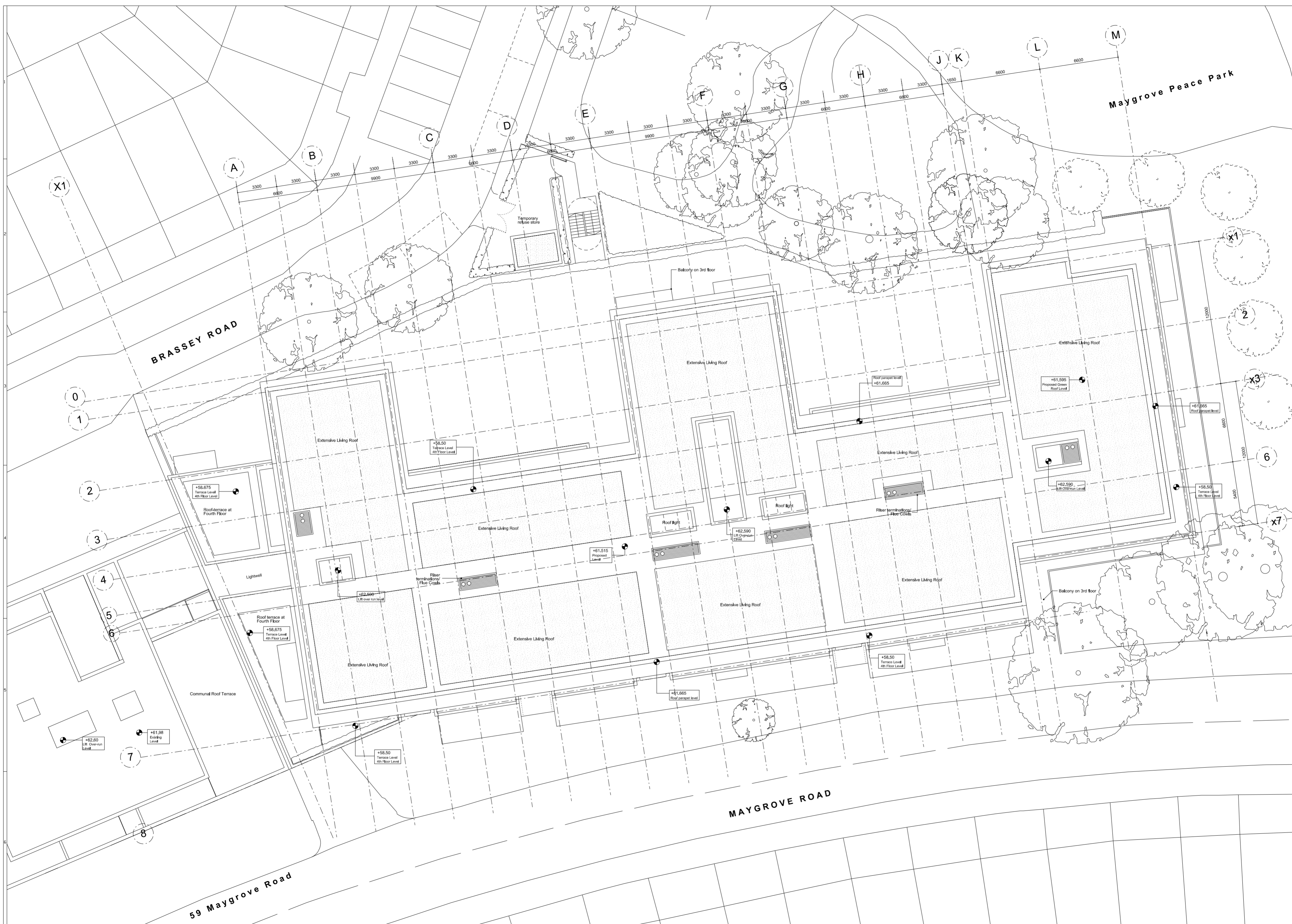


05 - Roof



- General Notes:**
- G1 For file and GA5 setting out refer to AUCU/HA/3000
 - G2 All dimensions to be checked on site
 - G3 Any discrepancies between drawings to be reported to the Architect immediately.
 - G4 All Levels are above Ordnance datum (AOD)
 - Existing Levels are shown thus
 - New Levels are shown thus
 - Roofed Living Levels are shown thus
 - G5 Use Rafter dimensions only. Do not scale from drawings. IP IN OCCUPY, ASIC.
 - G6 Refer to Structural Engineers drawings for all structural and services information.
 - G7 For tolerances see the Design Drawings and Specifications.
 - G8 For elements of work subject to Contractor's Design, this drawing is a guide only. The Contractor is responsible for the detailed design and coordination of the installation with the parameters defined in the specification, design drawings, contract terms and contract documents.
 - G9 Room numbers are shown thus
 - G10 Door (D) & Window (W) References are shown thus
 - G11 Clear height is shown thus
 - G12 T Sheet Reference shown thus
 - G13 Finishes are shown thus
 - G14 Setting Out Points shown thus
 - G15 Refer to AUCU/HA/3100 for T Sheet references, and AUCU/HA/3102 for Architectural Specifications.

Note: for detail of Extensive Living Roof
 call-up please refer to drawing:
 'A_MRH/6001 Roof Build up 1-20, OR'

| Work Package | Cost Check | Info/Marking | Tender | Contract | Construction | Date | Revision | Description | Date | Rev. | Revision | Date | Rev. | Revision |
|--------------|------------|--------------|--------|----------|--------------|------------|----------|---|------|------|----------|------|------|----------|
| | | | | | | 11.10.2012 | A | Based on Memo 0010 for design team co-ordination | | | | | | |
| | | | | | | 15.10.2012 | B | Based under Memo 0014 for Condition Reports | | | | | | |
| | | | | | | 26.10.2012 | C | Based under Memo 0023 for Planning Application | | | | | | |
| | | | | | | 30.10.2012 | D | Based under Memo 0025 for Planning Application | | | | | | |
| | | | | | | 02.11.2012 | E | Based for Altering applications memo 026 | | | | | | |
| | | | | | | 27.11.2012 | F | Based under Memo 0036 for Ecology / Planning Issues | | | | | | |
| | | | | | | 03.12.2012 | G | Based under Memo 0038 Updated Issue to London Borough of Camden | | | | | | |

| Project | Subject | Sort Code | Drawing Number | Rev. |
|-----------------------|-------------------------------|-----------|----------------|------|
| Maygrove Road Housing | Proposed Roof Plan GA Plan | AMRH | 3105 | E |

Architects: Hopkins Architects Partnership LLP
 27 Brassey Terrace, London, NW1 6LG
 T: 00 7524 1751 E: m.hopkins@a.hopkins.co.uk

Date: 10.12.2012 Scale: 1:200 at A2