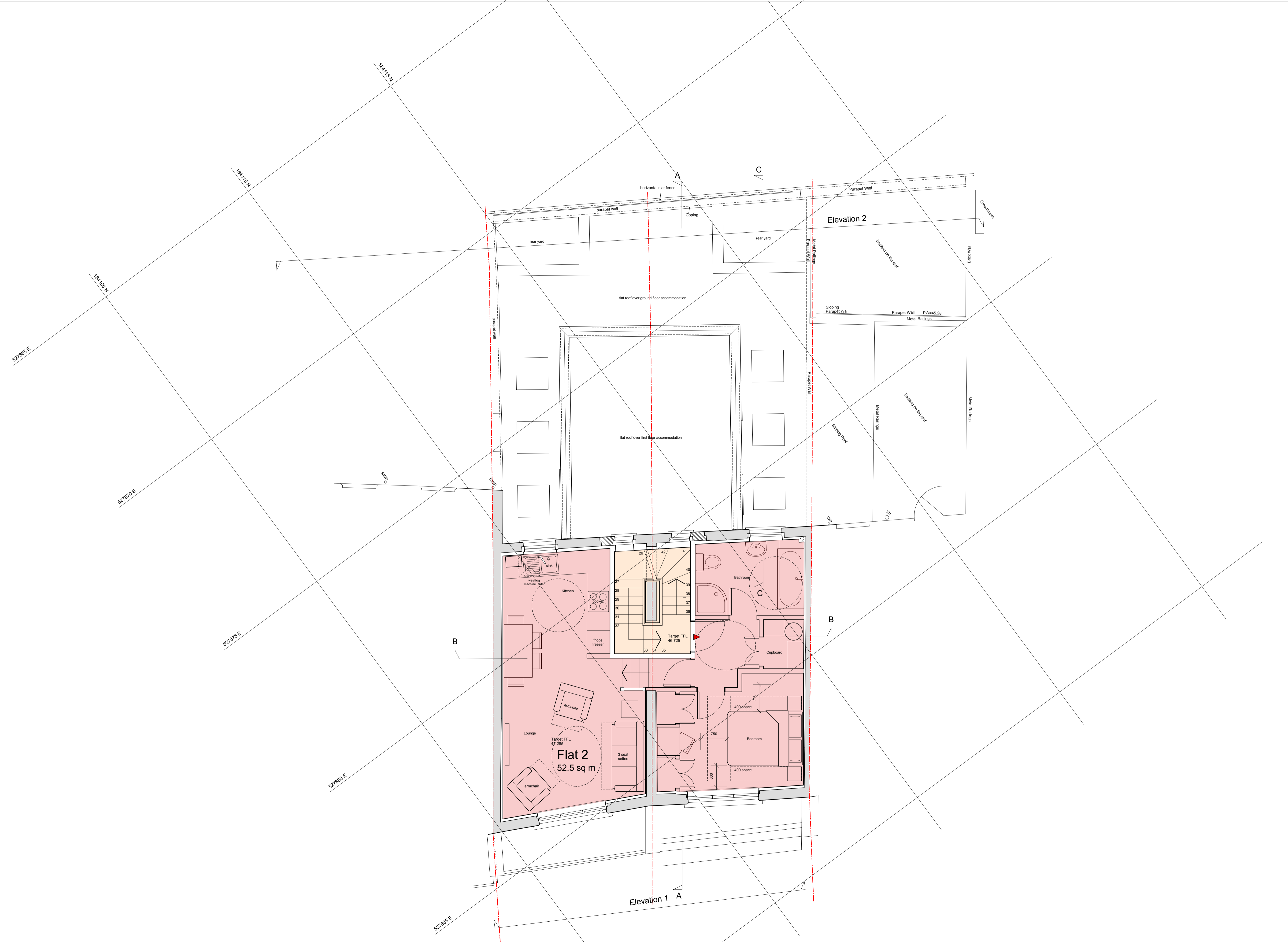


Notes

NOTE : Lifetime Homes.org.uk
"The overall aim should therefore be to make improvements as far as practicable, to get as close to the Lifetime Homes standard as possible."

- LIFETIME HOMES CRITERIA
1. There is no parking on site.
 3. The only access is directly from pavement which slopes from 40.04 on the left to 39.81 on the right (230mm as viewed from the street). Access is as gently sloping as is practicable.
 5. The new communal stair layout represents a significant improvement compared to the existing stairs. Handrail heights, and nosings to comply with requirements.
 6. The proposed internal door leafs are 838mm for the flat entry doors and 762mm for general doors, which is an improvement on the existing. Communal area widths improve on existing.
 7. Turning circles and dimensions indicate that circulation space requirements are generally met.
 10. Refer to criteria 14 below.
 12. Communal stair lift and through the floor lifts (A1/A3 use on ground floor) are not practicable.
 14. Bathrooms are located at flat entrance level. Drawings indicate that requirements are generally met.
 15. Principal window and glazing height requirements are met.
 16. Service control requirements will be met.



A 29/05/14 - Lifetime Homes notes added. ES

date	Revisions

living-architects copyright reserved

Do not scale this drawing

All dimensions to be checked on site

**79-81 REGENTS PARK ROAD
PRIMROSE HILL
LONDON NW1 8UY**

PROPOSED
SECOND FLOOR PLAN

living-architects
 14 Linen House, 253 Kilburn Lane
 London W10 4BQ
 Tel. 020 8962 6660
 Fax. 020 8962 6661
 surname@living-architects.com

SCALE 1:50 @ A1 (1:100 @ A3)

DATE MAY 2014

DRAWN BY ES

CHECKED BY

CAD FILE REF 930 K01-08.vwx

DRAWING STATUS PLANNING

DWG NO. **930/OD13**

REVISION **A**

