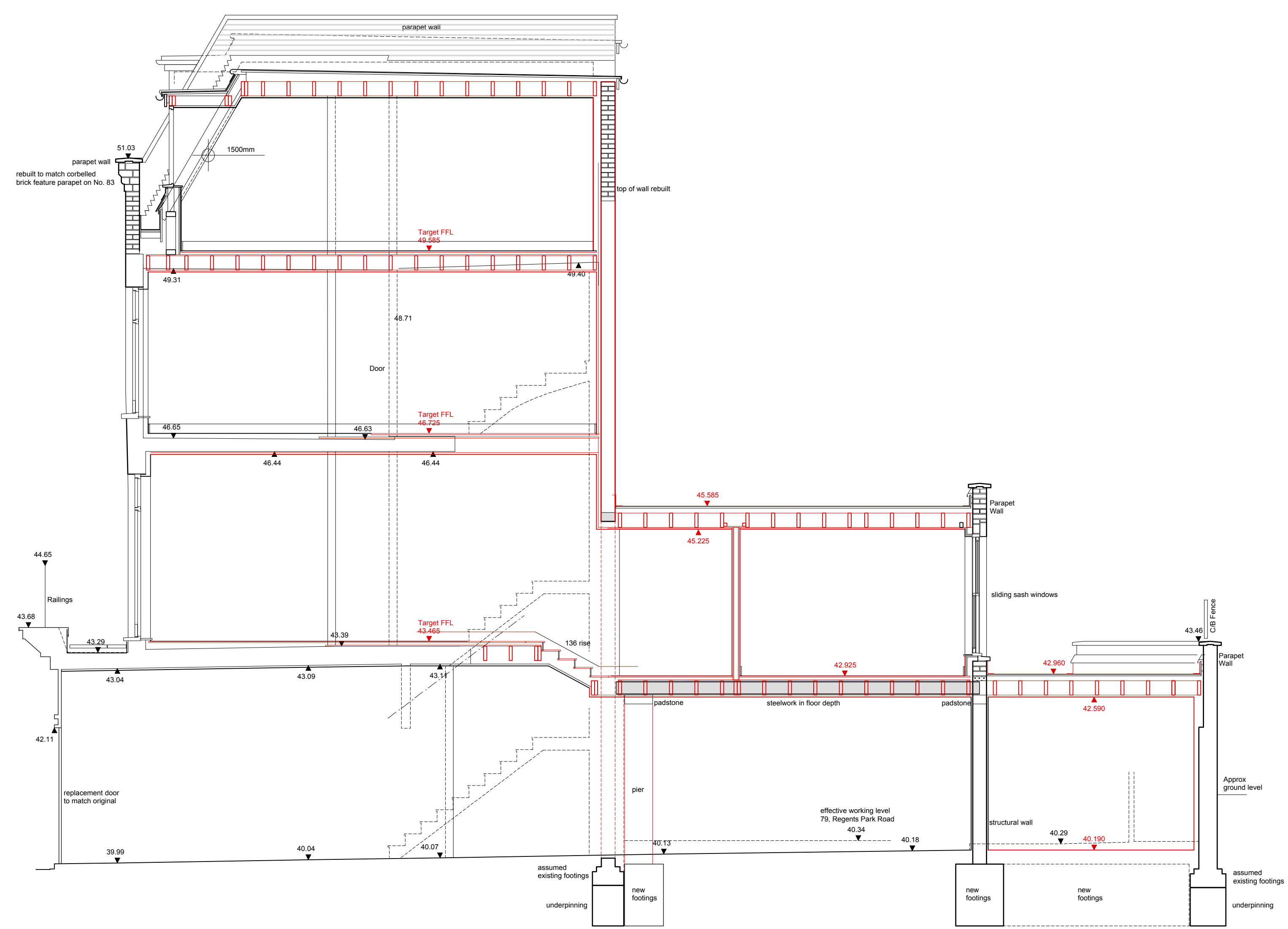
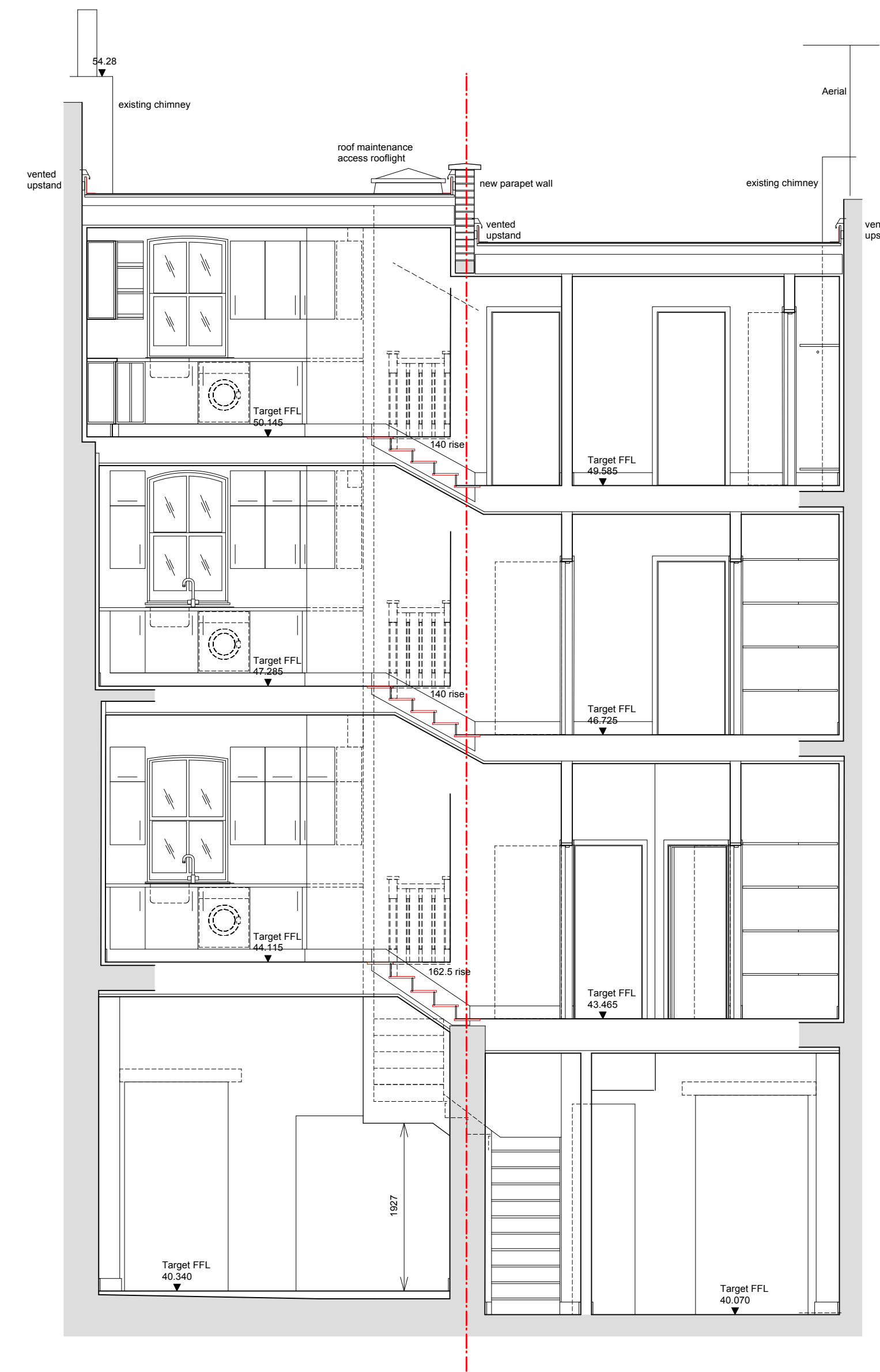


Notes



38.00m AOD

Section A-A



38.00m AOD

Section B-B

NEW STAIR WIDTH
875mm wall to wall
800mm handrail to wall

Second to Third floor
total rise = 3300mm
15 risers @ 190.67mm
going = 250mm but includes generous
winder treads see plans.

First to Second floor
total rise = 3200mm
17 risers @ 191.76mm
going = 250mm

Ground to First floor
total rise = 3395mm
18 risers @ 188.61mm
going = 250mm

date	Revisions

living-architects copyright reserved
Do not scale this drawing
All dimensions to be checked on site

79-81 REGENTS PARK ROAD
PRIMROSE HILL
LONDON NW1 8UY

PROPOSED
SECTIONS A-A & B-B
living-architects
14 Linen House, 253 Kilburn Lane
London W10 4BQ
Tel. 020 8962 6660
Fax. 020 8962 6661
surname@living-architects.com

SCALE 1:50 @ A1 (1:100 @ A3)

DATE MAY 2014

DRAWN BY ES

CHECKED BY

CAD FILE REF 930 K01-08.vwx

DRAWING STATUS PLANNING

DWG NO. 930/OD19

REVISION -

