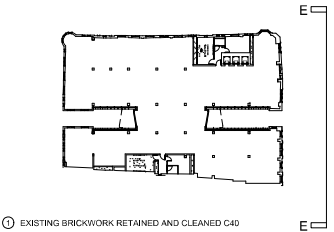




Notes:



- EXISTING BRICKWORK RETAINED AND CLEANED C40
- NEW STONE CLADDING H51/110
- NEW TERRACOTTA FINS H11/130A
- NEW METAL VERTICAL REVEAL H43/110
- NEW METAL CLADDING H43/110
- NEW SIGNAGE (SHOWN INDICATIVE SEE GENERAL NOTE)
- NEW GLASS FACADE H11/110A; H11/110B
- NEW DOUBLE GLAZED BALLUSTRADE L30/500A WITH 50% HANDRAIL L30/100A
- NEW CLEAR GLASS AUTOMATIC SLIDING DOORS L20/400A
- NEW DORMER WINDOWS L10/317
- NEW METAL LOUVRES L10/650B; L10/650D
- NEW METAL ROOF H74/111
- NEW TERRACE DECKING Q55/110A
- NEW INVERTED BROWN ROOF Q37/130
- NEW DOUBLE GLAZED TIMBER SASH REPLACEMENT WINDOWS L10/210A
- NEW CAPPED GLASS FACADE H11/111; H11/111A
- NEW MIRROR FINISH METAL PANNELLING H43/110 TO SHADOW GAP REVEAL
- NEW GLAZED SINGLE DOOR H11/135A
- NEW ACOUSTIC LOUVRES TO PLANT ENCLOSURE L10/650C
- NEW ALUMINIUM WINDOW L10/330A
- EXISTING STONE DETAILS RETAINED AND CLEANED C40
- EXISTING WINDOWS REPLACED WITH LOUVRES L10/330D
- NEW GLAZED ENTRANCE DOUBLE DOORS H11/135B
- NEW METAL FRAME Z11/111; Z31 FOR PPC FINISH
- NEW FEATURE LIGHT REFER TO LIGHTING CONSULTANTS SPECIFICATIONS
- NEW DECORATIVE METAL ELEMENTS Z11/110; Z31 FOR PPC FINISH
- RETAIL SIGNAGE ZONE (SEE GENERAL NOTE)
- DROP DOWN BALUSTRADE (FOR SERVICE ACCESS) Z11/135A
- NEW METAL SECURITY GATE L20/620
- [OMITTED]
- NEW PERFORATED METAL EXTRACT PANEL H51/122
- NEW CAPLESS FLUSH SLOT WINDOW H11/110C
- NEW PAINT FINISH TO EXISTING SHOPFRONTS M10
- NEW SPANDREL PANEL
- NEW INVERTED PAVED ROOF J31/130A
- NEW SOLID METAL DOOR L20/400C
- NEW BRICK TO MATCH EXISTING F10/110
- NEW TRANSLUCENT GLAZING H11/111
- NEW CAPPED GLASS FACADE H11/111A
- NEW STONE COPINGS AND FEATURES TO MATCH EXISTING F10/25A; F10/75A
- NEW MICRO LOUVRES L10/650A
- STRUCTURAL STEEL FRAME SYSTEM G10/150
- INSULATION F10
- ROOF ACCESS HATCH
- PULL DOWN LOFT LADDER L30/42A
- DRYLINGS/ SARKING K10/P20 (REFER TO FL/RC SERIES)
- BLOCKWORK F10
- SECONDARY STEEL WORK G10/152
- NEW ZINC CAPPING H74/311
- NEW ZINC GUTTER H74/210A
- INSECT MESH H74/111
- VCL F10/310
- BREATHABLE MEMBRANE P10/320A
- WEEP HOLE F30/132
- FULL CAVITY INSULATION F30/150
- FIXING TIES F10/233
- BRICK SUPPORT SYSTEM F30/285
- CAVITY TRAY F30/375A
- ROLLER BLIND BOX OFFICE N10/240A BLINDS PART OF TENANT FIT OUT
- MAIL BOX N10/285
- SHADOW GAP PRESSING H74/111
- NEW GLAZING TO LINK BRIDGE AND RESIDENTIAL ENTRANCE H11/110D
- NEW FIRE CURTAIN L20/810A
- ROLLER BLIND RESIDENTIAL N10/240
- NATURAL STONE COVERING M40/15A; M40/15B
- SHADOW BOX DETAIL H11/110C; H11/111A
- CERAMIC FLOOR TILES M40/110C
- TIMBER PANNELLING K13/160A
- OVERSIZED TERRACOTTA COVER CAP H11/111
- PERFORATED METAL H31/122
- NEW CAPLESS FLUSH SLOT WINDOW H11/110F
- NEW DOUBLE GLAZED TIMBER CASEMENT REPLACEMENT WINDOWS L10/210B

GENERAL NOTES:
- GENERAL BUILDING SIGNAGE SHOWN IS INDICATIVE ONLY
- RETAIL SIGNAGE ZONE SHOWN FOR INFORMATION
- FUTURE SIGNAGE PART OF SEPARATE FUTURE
SIGNAGE APPLICATION
SIGNAGE APPLICATION
W. W. FLOOR NUMBER X NUMBER
C2 15.05.14 NMA PLANNING ISSUE
C1 27.01.14 CONSTRUCTION ISSUE
T1 16.08.13 TENDER ISSUE
A 05.07.13 STAGE E ISSUE
- 19.04.13 STAGE D ISSUE

Revision:

ORMS

Architecture
Design

1 Pine Street London EC1R 0JH
T 0207 833 8533 F 0207 837 7575
E orms@orms.co.uk

Project 79 - 86 CHANCERY LANE

Drawing title PROPOSED
EAST ELEVATION

Scale 1:100 @ A1 / 1:200 @ A3 Drwg. No. 1966 GE 01

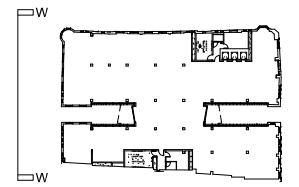
Date JANUARY 2013 Rev. C2

Status ☐ For Information ☐ For tender ☒ For construction

Do not scale. All dimensions to be confirmed on site.
Information contained in this drawing is the sole copyright of ORMS Designers & Architects Ltd.
and is not to be reproduced without permission.



Notes:



- EXISTING BRICKWORK RETAINED AND CLEANED C40
- NEW STONE CLADDING H5/110
- NEW TERRACOTTA FINIS H1/1130A
- NEW METAL VERTICAL REVEAL H43/110
- NEW METAL CLADDING H43/110
- NEW SIGNAGE (SHOWN INDICATIVE SEE GENERAL NOTE)
- NEW GLASS FACADE H1/110A; H1/110B
- NEW CLEAR GLAZED BALUSTRADE L30/560A WITH S/S HANDRAIL L30/70A
- NEW CLEAR GLASS AUTOMATIC SLIDING DOORS L20/490A
- NEW DORMER WINDOWS L10/317
- NEW METAL LOUVRES L10/650R; L10/650D
- NEW METAL ROOF H74/111
- NEW TERRACE DECKING Q55/110A
- NEW INVERTED BROWN ROOF Q37/130
- NEW DOUBLE GLAZED TIMBER SASH REPLACEMENT WINDOWS L10/210A
- NEW CAPPED GLASS FACADE H1/111; H1/111A
- NEW MIRROR FINISH METAL PANNELLING H43/110 TO SHADOW GAP REVEAL
- NEW GLAZED SINGLE DOOR H1/1135A
- NEW ACOUSTIC LOUVRES TO PLANT ENCLOSURE L10/650C
- NEW ALUMINIUM WINDOW L10/330A
- EXISTING STONE DETAILS RETAINED AND CLEANED C40
- EXISTING WINDOWS REPLACED WITH LOUVRES L10/330D
- NEW GLAZED ENTRANCE DOUBLE DOORS H1/1135B
- NEW METAL PORTAL FRAME Z1/1111
- NEW FEATURE LIGHT REFER TO LIGHTING CONSULTANTS SPECIFICATIONS
- NEW DECORATIVE METAL ELEMENTS Z1/11110; Z31 FOR PPC FINISH
- RETAIL SIGNAGE ZONE (SEE GENERAL NOTE)
- DROP DOWN BALUSTRADE (FOR SERVICE ACCESS) L31/135A
- NEW METAL SECURITY GATE L20/620
- (OMITTED)
- NEW PERFORATED METAL EXTRACT PANEL H31/122
- NEW CAPLESS FLUSH SLOT WINDOW H1/110C
- NEW PAINT FINISH TO EXISTING SHOPFRONTS M50
- NEW SPANDREL PANEL
- NEW INVERTED PAVED ROOF J31/130A
- NEW SOLID METAL DOOR L20/490C
- NEW BRICK TO MATCH EXISTING F10/110
- NEW TRANSLUCENT GLAZING H1/1111
- NEW CAPPED GLASS FACADE H1/111A
- NEW STONE COPINGS AND FEATURES TO MATCH EXISTING F10/25A; F10/765A
- NEW MICRO LOUVRES L10/650A
- STRUCTURAL STEEL FRAME SYSTEM G10/150
- INSULATION F10
- ROOF ACCESS HATCH
- PULL DOWN LOFT LADDER L30/422A
- DRYLING/ SARKING K10/P20 (REFER TO FLIRC SERIES)
- BLOCKWORK F10
- SECONDARY STEEL WORK G10/152
- NEW ZINC CAPPING H74/311
- NEW ZINC GUTTER H74/210A
- INSECT MESH H74/111
- VCL P10/310
- BREATHABLE MEMBRANE P10/320A
- WEEP HOLE F30/132
- FILL CAVITY INSULATION F30/150
- FIXING TIES F30/233
- BRICK SUPPORT SYSTEM F30/285
- CAVITY TRAY F30/375A
- ROLLER BLIND BOX OFFICE N10/240A BLINDS PART OF TENANT FIT OUT
- MAIL BOX N10/280
- SHADOW GAP PRESSING H74/111
- NEW GLAZING TO LINK BRIDGE AND RESIDENTIAL ENTRANCE H1/110D
- NEW FIRE CURTAIN L20/610A
- ROLLER BLIND RESIDENTIAL N10/240
- NATURAL STONE COVERING M40/115A; M40/115B
- SHADOW BOX DETAIL H1/110C; H1/111A
- CERAMIC FLOOR TILES M40/110C
- TIMBER PANNELLING K13/160A
- OVERSIZED TERRACOTTA COVER CAP H1/1111
- PERFORATED METAL H31/122
- NEW CAPLESS FLUSH SLOT WINDOW H1/1110F
- NEW DOUBLE GLAZED TIMBER CASEMENT REPLACEMENT WINDOWS L10/210B

GENERAL NOTES:
- GENERAL BUILDING SIGNAGE SHOWN IS INDICATIVE ONLY
- RETAIL SIGNAGE ZONE SHOWN FOR INFORMATION
- FUTURE SIGNAGE PART OF SEPARATE FUTURE SIGNAGE APPLICATION
- WINDOW NUMBER SYSTEM:
WINDOW FLOOR NUMBER TYPE DX NUMBER

C2 15.05.14 NMA PLANNING ISSUE
C1 27.01.14 CONSTRUCTION ISSUE
T1 16.08.13 TENDER ISSUE
A 05.07.13 STAGE E ISSUE
- 19.04.13 STAGE D ISSUE

Revision:

ORMS

Architecture
Design

1 Pine Street London EC1R 0JH
T 0207 833 8533 F 0207 837 7575
E orms@orms.co.uk

Project 79 - 86 CHANCERY LANE

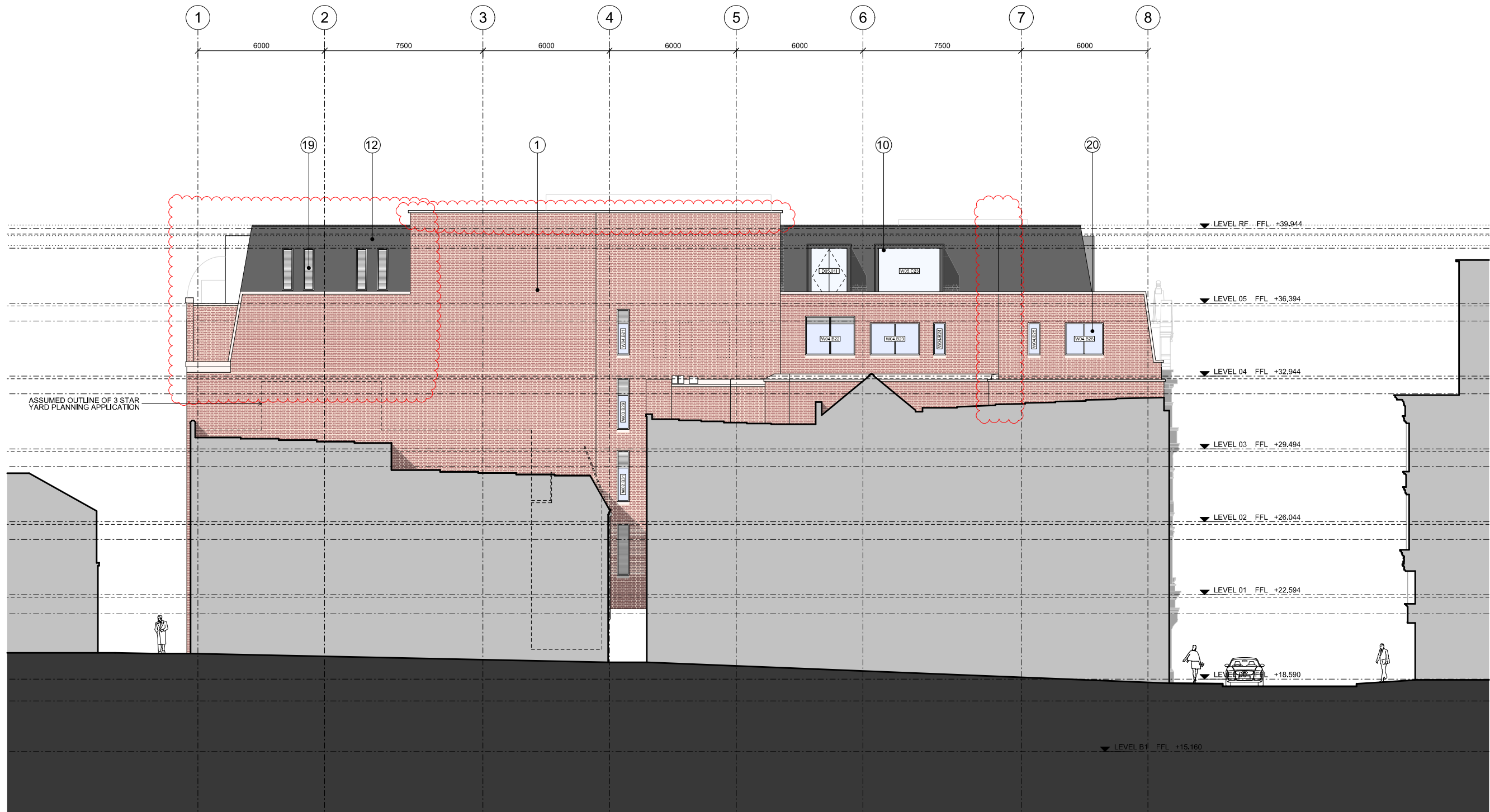
Drawing title PROPOSED
WEST ELEVATION

Scale 1:100 @ A1 / 1:200 @ A3 Drwg. No. 1966 GE 03

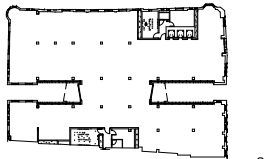
Date JANUARY 2013 Rev. [C2]

Status ☐ For Information ☐ For tender ☒ For construction

Do not scale. All dimensions to be confirmed on site.
Information contained in this drawing is the sole copyright of ORMS Designers & Architects Ltd.
and is not to be reproduced without permission.



Notes:



- EXISTING BRICKWORK RETAINED AND CLEANED C40
- NEW STONE CLADDING H5/110
- NEW TERRACOTTA FINISH H1/130A
- NEW METAL VERTICAL REVEAL H4/110
- NEW METAL CLADDING H4/110
- NEW SIGNAGE (SHOWN INDICATIVE SEE GENERAL NOTE)
- NEW GLASS FACADE H1/110A; H1/110B
- NEW CLEAR GLAZED BALUSTRADE L30/560A WITH S/S HANDRAIL L30/50A
- NEW CLEAR GLASS AUTOMATIC SLIDING DOORS L20/400A
- NEW DORMER WINDOWS L10/317
- NEW METAL LOUVRES L10/650B; L10/650D
- NEW METAL ROOF H7/411
- NEW TERRACE DECKING Q5/110A
- NEW INVERTED BROWN ROOF Q3/130
- NEW DOUBLE GLAZED TIMBER SASH REPLACEMENT WINDOWS L10/210A
- NEW CAPPED GLASS FACADE H1/111; H1/111A
- NEW MIRROR FINISH METAL PANNELLING H4/110 TO SHADOW GAP REVEAL
- NEW GLAZED SINGLE DOOR H1/135A
- NEW ACOUSTIC LOUVRES TO PLANT ENCLOSURE L10/650C
- NEW ALUMINIUM WINDOW L10/330A
- EXISTING STONE DETAILS RETAINED AND CLEANED C40
- EXISTING WINDOWS REPLACED WITH LOUVRES L10/330D
- NEW GLAZED ENTRANCE DOUBLE DOORS H1/135B
- NEW METAL PORTAL FRAME Z1/111; Z1/111A
- NEW FEATURE LIGHT REFER TO LIGHTING CONSULTANTS SPECIFICATIONS
- NEW DECORATIVE METAL ELEMENTS Z1/110; Z1/111 FOR FINISH
- RETAIL SIGNAGE ZONE (SEE GENERAL NOTE)
- GROUP DOWN BALUSTRADE (FOR SERVICE ACCESS) Q4/1135A
- NEW METAL SECURITY GATE L20/620
- (OMITTED)
- NEW PERFORATED METAL EXTRACT PANEL H3/112
- NEW CAPLESS FLUSH SLOT WINDOW H1/110C
- NEW PAINT FINISH TO EXISTING SHOFFRONTS M60
- NEW SPANDREL PANEL
- NEW INVERTED PAVED ROOF J3/130A
- NEW SOLID METAL DOOR L20/480C
- NEW BRICK TO MATCH EXISTING F10/110
- NEW TRANSLUCENT GLAZING H1/111
- NEW CAPPED GLASS FACADE H1/111A
- NEW STONE CORNINGS AND FEATURES TO MATCH EXISTING F10/25A; F10/25A
- NEW MICRO LOUVRES L10/650A
- STRUCTURAL STEEL FRAME SYSTEM G10/150
- INSULATION P10
- ROOF ACCESS HATCH
- PULL DOWN LOFT LADDER L30/422A
- DRY-LOK SARKING K10/P20 (REFER TO FLING SERIES)
- BLOCKWORK F10
- SECONDARY STEEL WORK G10/152
- NEW ZINC CAPPING H7/4311
- NEW ZINC GUTTER H7/4210A
- INSECT MESH H7/411
- VCL P10/310
- BREATHABLE MEMBRANE P10/320A
- WEEP HOLE F30/132
- FULL CAVITY INSULATION F30/150
- FIXING TIES F30/233
- BRICK SUPPORT SYSTEM F30/285
- CAVITY TRAY F30/370A
- ROLLER BLIND BOX OFFICE W10/240A BLINDS PART OF TENANT FIT OUT
- MAIL BOX N10/280
- SHADOW GAP PRESSING H7/411
- NEW GLAZING TO LINK BRIDGE AND RESIDENTIAL ENTRANCE H1/110D
- NEW FIRE CURTAIN L20/610A
- ROLLER BLIND RESIDENTIAL N10/240
- NATURAL STONE COVERING M40/115A; M40/115B
- SHADOW BOX DETAIL H1/110C; H1/111A
- CERAMIC FLOOR TILES M40/110C
- TIMBER PANNELLING K13/160A
- OVERSIZED TERRACOTTA COVER CAP H1/111
- PERFORATED METAL H1/122
- NEW CAPLESS FLUSH SLOT WINDOW H1/110F
- NEW DOUBLE GLAZED TIMBER CASEMENT REPLACEMENT WINDOWS L10/210B

GENERAL NOTES:
- GENERAL BUILDING SIGNAGE SHOWN IS INDICATIVE ONLY
- RETAIL SIGNAGE ZONE SHOWN FOR INFORMATION
- FUTURE SIGNIFICATION OF SEPARATE FUTURE
- SIGNAGE APPLICATION
- WINDOW NUMBER SYSTEM:
W WINDOW FLOOR NUMBER X TYPE DX NUMBER

C2	15.05.14	NMA PLANNING ISSUE
C1	27.01.14	CONSTRUCTION ISSUE
T1	16.08.13	TENDER ISSUE
A	05.07.13	STAGE E ISSUE
-	19.04.13	STAGE D ISSUE

Revision:

ORMS

Architecture
Design

1 Pine Street London EC1R 0JH
T 0207 833 8533 F 0207 837 7575
E orms@orms.co.uk

Project 79 - 86 CHANCERY LANE

Drawing title PROPOSED
SOUTH ELEVATION

Scale 1:100 @ A1 / 1:200 @ A3 Drwg. No. 1966 GE 04

Date JANUARY 2013 Rev. [C2]

Status ☐ For Information ☐ For tender ☒ For construction

Do not scale. All dimensions to be confirmed on site.
Information contained in this drawing is the sole copyright of ORMS Designers & Architects Ltd.
and is not to be reproduced without permission.



1 EAST ELEVATION
1,200



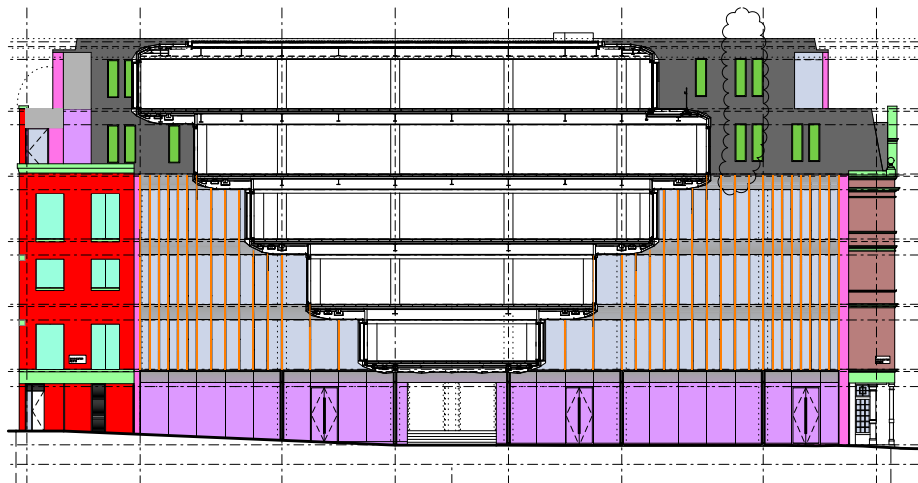
2 NORTH ELEVATION
1,200



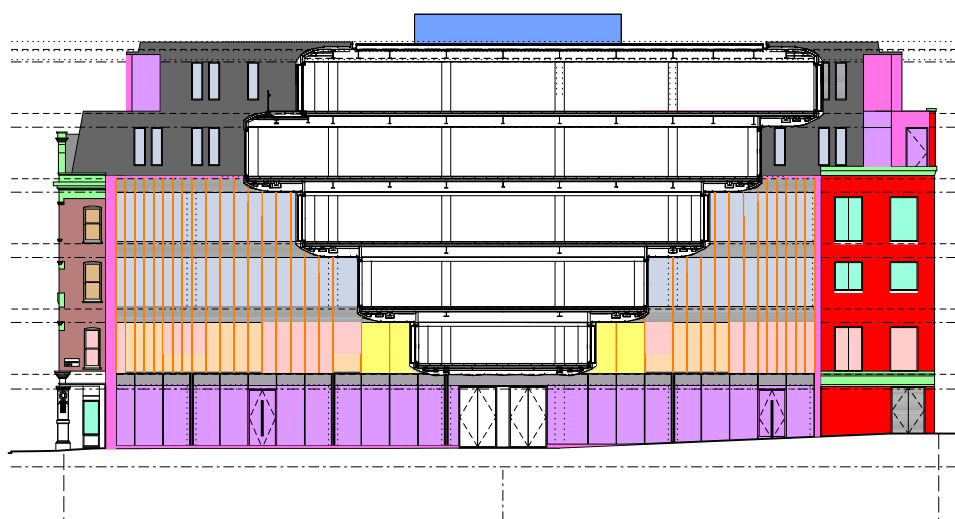
3 WEST ELEVATION
1,200



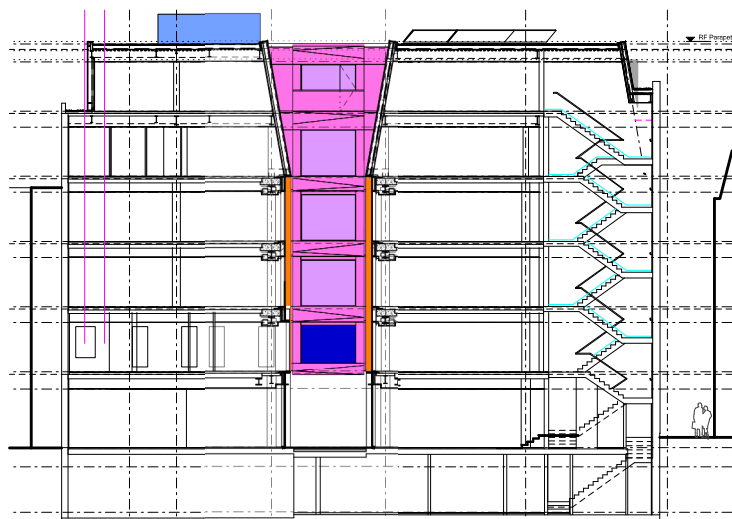
4 SOUTH ELEVATION
1,200



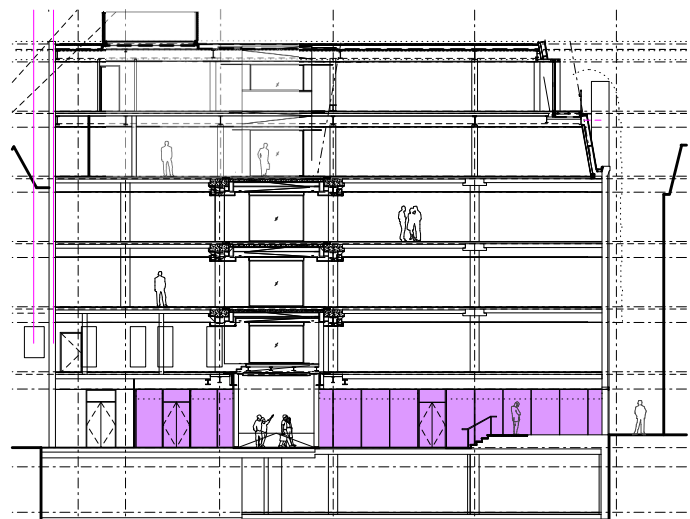
5 SECTION A-A
1,200



6 SECTION B-B
1,200

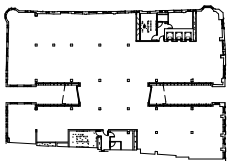


7 SECTION C-C
1,200



8 SECTION E-E
1,200

Notes:



- EWS 01 CAPLESS CURTAIN WALLING SG H11/110A
- EWS 02 CAPPED CURTAIN WALLING H11/110B&D; H11/111
- EWS 03 FIRE RATED GLAZING 60/60 L10/330B
- EWS 04 FIRE RATED GLAZING 60/15 H11/112
- EWS 05 REPLACEMENT WINDOWS TYPE 1: TIMBER CONSERVATION SASH WINDOWS (SPIRAL BALANCED) L10/210A
- EWS 06 REPLACEMENT WINDOWS TYPE 2: ALUMINIUM CASEMENT WINDOWS L10/330A
- EWS 07 SPANDREL PANEL WITH MICRO LOUVERS L10/650A
- EWS 08 OPAQUE GLAZING FR 60/15 (BACKPAINTED GLASS) H11/112
- EWS 09 SELF CLEANING GLAZING H11/110C
- EWS 10 PPC ALUMINIUM LOUVRES L10/650
- EWS 11 TERRACOTTA FINS H11/130A
- EWS 12 METAL CLADDING H43/110
- EWS 13 EXISTING HERITAGE BRICKWORK F10/110A
- EWS 14 EXISTING NON-HERITAGE BRICKWORK
- EWS 15 NEW BRICKWORK F10/110
- EWS 16 ZINC ROOF H74/111
- EWS 17 STONE CORNICES AND FEATURES TO MATCH EXISTING F10/725A; F10/765A
- EWS 18 PLANTSREEN L10/650C
- EWS 19 EXTERNAL FIRE CURTAIN L20/610A RY FRONT OF CURTAIN WALLING H11/1110D
- EWS 20 NEW STONE CLADDING H51/110
- EWS 21 REPLACEMENT WINDOWS TYPE 3: TIMBER CONSERVATION CASEMENT L10/210B

Notes:

1. For window types refer to GE Series drawings
2. All ground floor retail glazing to be low iron glass

C1	27.01.14	CONSTRUCTION ISSUE
T1	16.08.13	TENDER ISSUE
A	05.07.13	STAGE E ISSUE
-	19.04.13	STAGE D ISSUE

Revision:

ORMS

Architecture
Design

1 Pine Street London EC1R 0JH
T 0207 833 8533 F 0207 837 7575
E orms@orms.co.uk

Project 79 - 86 CHANCERY LANE

Drawing title EXTERNAL CLADDING
FACADE TYPES
COLOUR KEY

Scale 1:200 @ A1 / 1:400 @ A3 Drwg. No. 1966 CL 100

Date JANUARY 2013 Rev. C1

Status ☐ For Information ☐ For tender ☒ For construction

Do not scale. All dimensions to be confirmed on site.
Information contained in this drawing is the sole copyright of ORMS Designers & Architects Ltd.
and is not to be reproduced without permission.