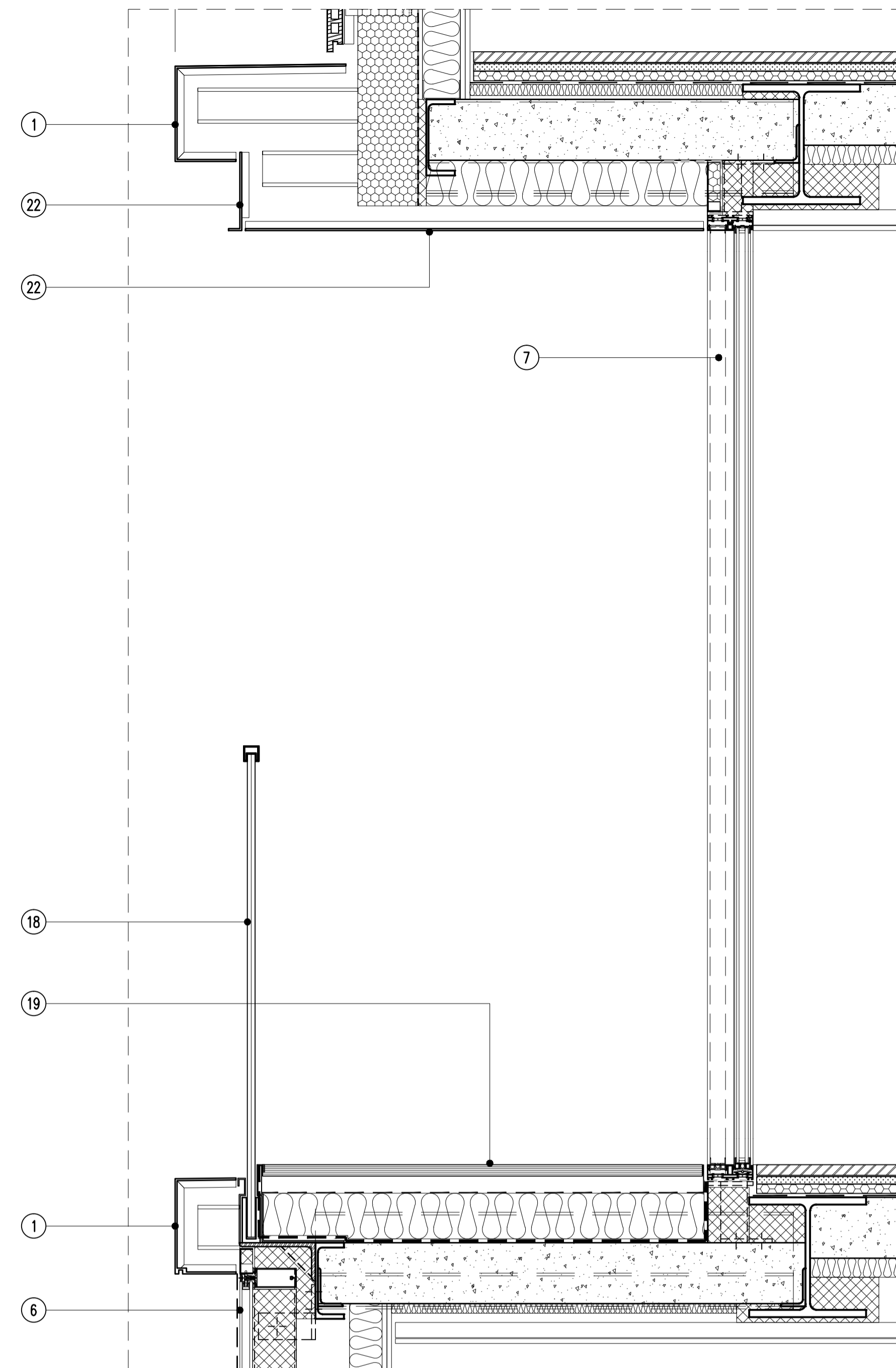
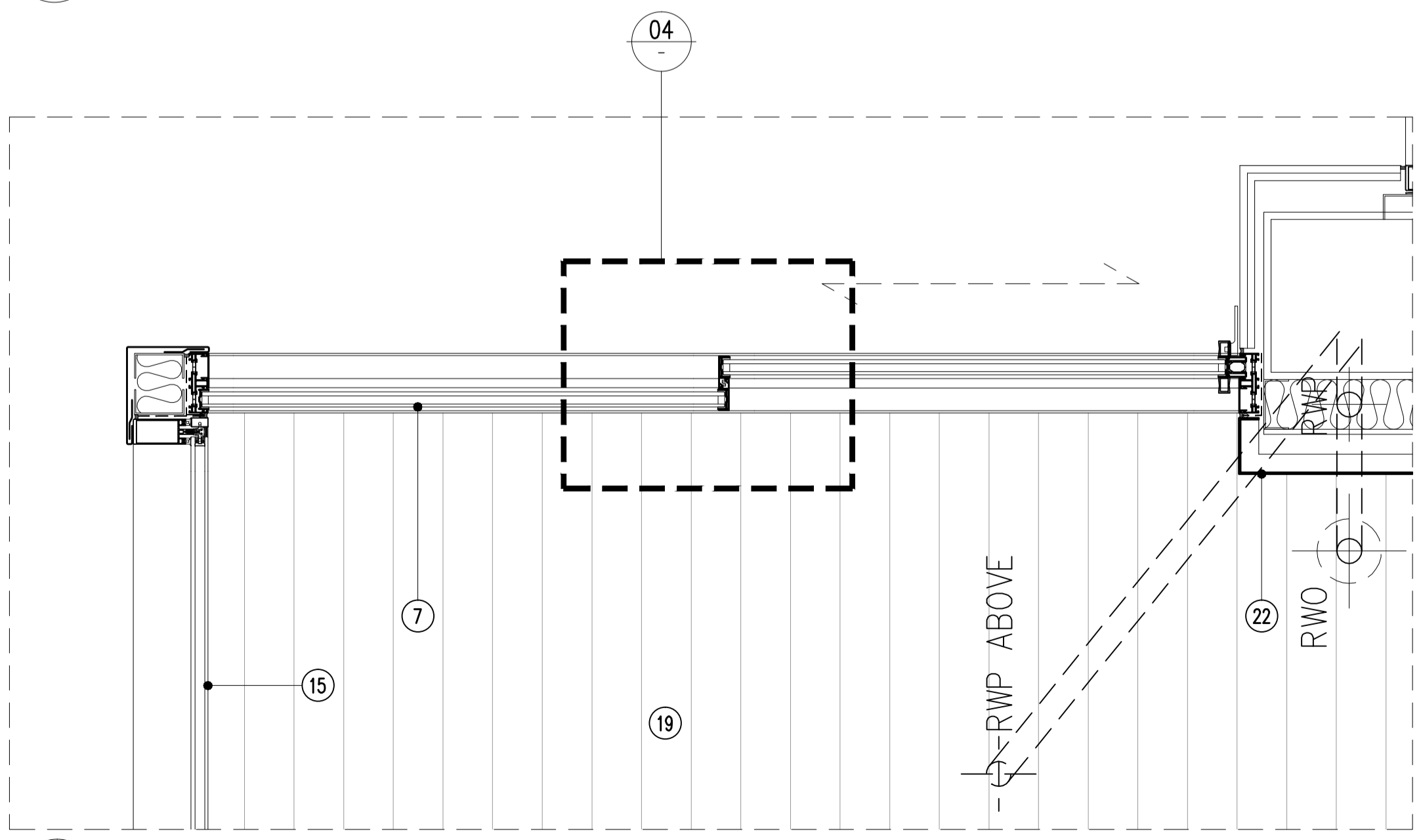


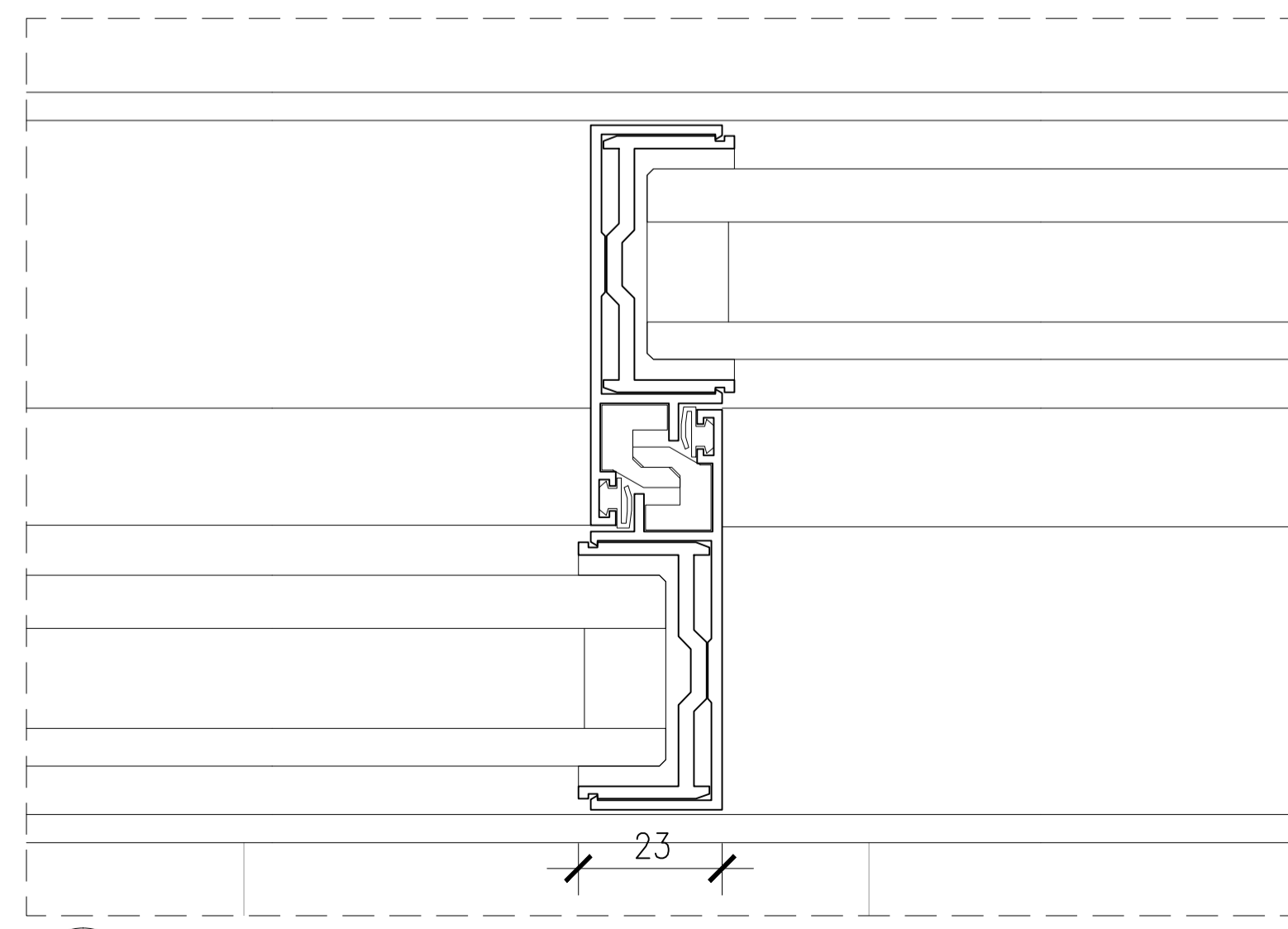
**01 WINDOW ELEVATION**  
SCALE: 1:10 (A1)



**03 WINDOW SECTION**  
SCALE: 1:10 (A1)



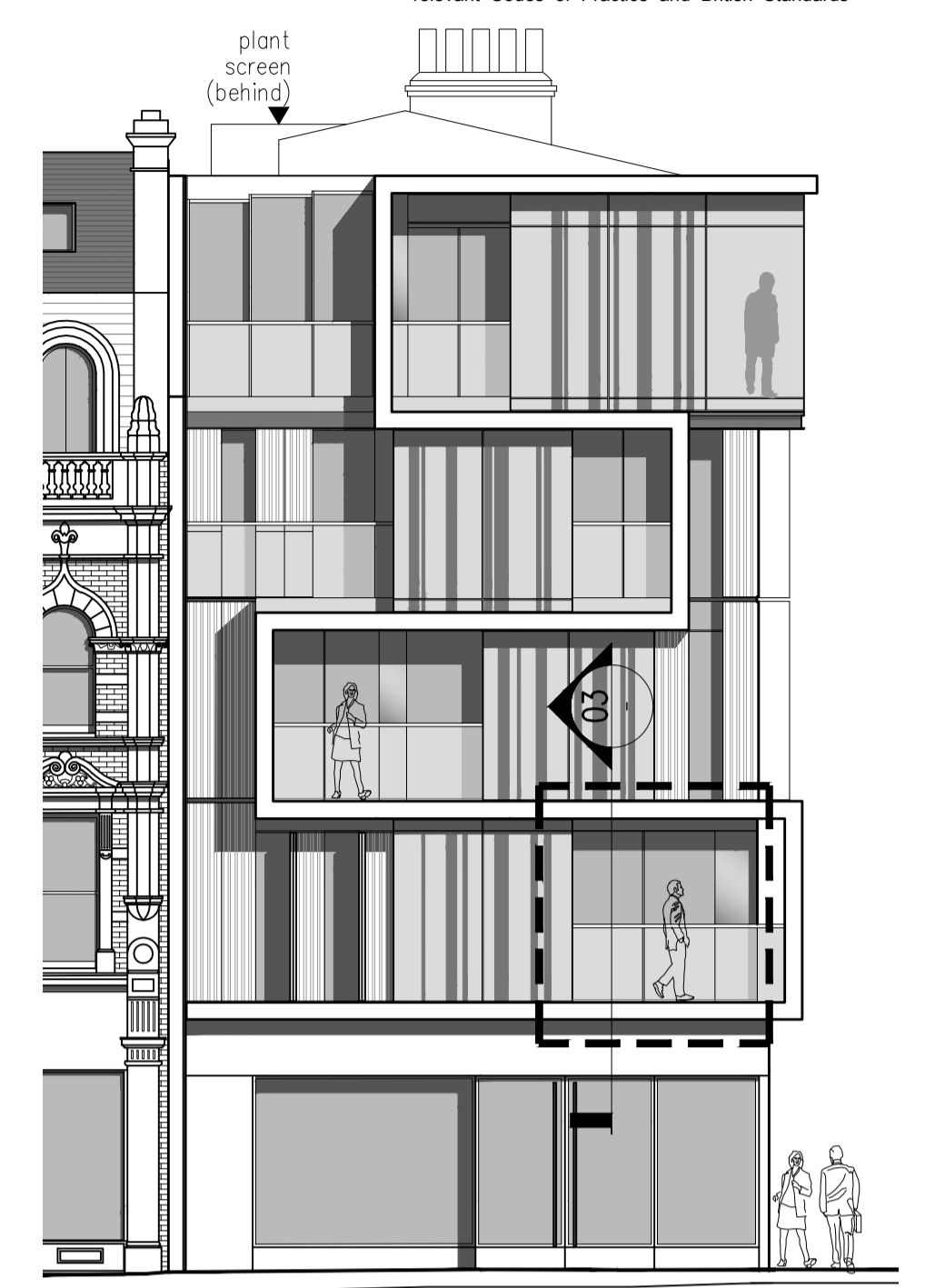
**02 WINDOW PLAN**  
SCALE: 1:10 (A1)



**04 WINDOW GLAZING BAR DETAIL**  
SCALE: 1:1 (A1)

NOTES  
 1 The Contractor must check and confirm all dimensions  
 2 All discrepancies must be reported and resolved by the Architect before works commence  
 3 This drawing is not to be scaled  
 4 All work and materials to be in accordance with current applicable Statutory Legislation and to comply with all relevant Codes of Practice and British Standards

Copyright Rolfe Judd Ltd



**FACADE MATERIAL LEGEND**  
To be read in conjunction with External Finishes Schedule Rev.P1

1. Stone cladding
2. Terracotta rainscreen cladding, Type 1
3. Terracotta rainscreen cladding, Type 2
4. Terracotta protruding fixed shutter. Finish to match terracotta rainscreen.
5. Curtain walling system FW 50+SG
6. Shadow box spandrel panel in SSG curtain walling system.
7. Sliding / fixed aluminium doors
8. Aluminium windows
9. 1-3 Goodge Street Dormers: Timber Sash
10. Dormer: Timber french doors.
11. Aluminium brise soleil
12. Replacement windows 62 TCR: Timber Sash.
13. Lead Flashing.
14. Horizontal and vertical shadow gap: aluminium rainscreen cladding
15. Back pointed sandblasted spandrel panel
16. Etched / Fritted Glazing
17. Timber fence
18. Frameless glass balustrade
19. Anti-slip composite decking
20. Facing Brick
21. Aluminium window sill
22. Aluminium rainscreen cladding
23. Zinc standing seam roofing and walling
24. Slate mansard roof
25. Inverted roof system
26. Decorative metal panel
27. Through coloured insulated render
28. Rooflight Type 1
29. Rooflight Type 2
30. Rooflight/sliding doors
31. Metal Balustrade

P1 ISSUED FOR PLANNING 02/06/14  
 Rev Date

**Rolfe Judd**  
 Architecture Planning Interiors  
 Old Church Court, Claylands Road, The Oval, London SW8 1NZ  
 T 020 7556 1500  
 www.rolfe-judd.co.uk

Client  
**Goodge Street (Tottenham Court Rd) LLP**

Project  
**62-63 Tottenham Court Road  
 1-7 Goodge Street**

Drawing  
**Proposed Window Details  
 Typical Sliding Door**

Scale	Date	Status
Varies (A1)	Jun 14	Planning
Job Number	Drawing Number	Revision
5315	T(20) DE02	P1

G:\5315\T\_Series\T20T20DE02

This scale is 10cm in length when printed at the size indicated in the title block