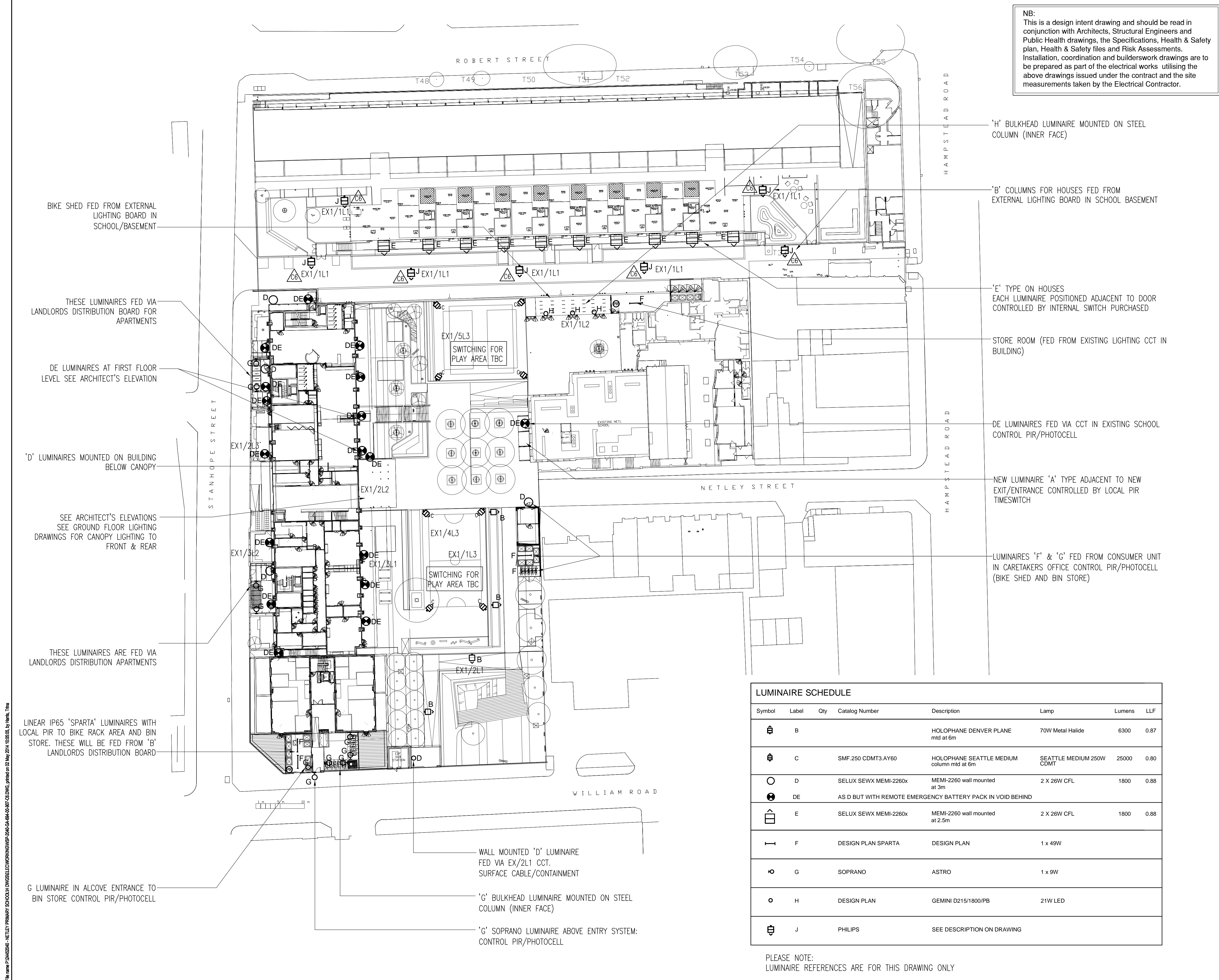


File name P12442040 - NETLEY PRIMARY SCHOOL DWS ELECTRICAL SERVICES-2040-GA-694-00-907-CD.DWG, printed on 12 May 2014 10:05:05, by Haris, Taha



NB:  
This is a design intent drawing and should be read in conjunction with Architects, Structural Engineers and Public Health drawings, the Specifications, Health & Safety plan, Health & Safety files and Risk Assessments. Installation, coordination and builderswork drawings are to be prepared as part of the electrical works utilising the above drawings issued under the contract and the site measurements taken by the Electrical Contractor.

DO NOT SCALE

NOTES

1. THIS DRAWING IS TO BE READ IN CONJUNCTION WITH ALL ELECTRICAL, MECHANICAL & PUBLIC HEALTH DRAWINGS FOR THIS CONTRACT.

2. ALL ELECTRICAL SERVICES WORK TO BE CARRIED OUT IN ACCORDANCE WITH THE ELECTRICAL ENGINEERING SERVICES SPECIFICATION FOR THIS CONTRACT.

3. DIMENSIONS ARE NOT TO BE SCALED FROM THIS DRAWING. THE CONTRACTOR SHALL MODIFY THE WORKING DRAWINGS TO INCORPORATE ANY AND ALL VARIATIONS AS THE CONTRACT PROGRESSES. THE WORKING DRAWINGS SHALL FORM THE BASIS OF THE RECORD DRAWINGS WHICH WILL BE MADE AVAILABLE AT THE TESTING AND COMMISSIONING STAGE

4. THESE DRAWINGS INDICATE THE DESIGN INTENT OF THE ELECTRICAL SERVICES TO SERVE THE BUILDING. THE CONTRACTOR SHALL INVESTIGATE THE DETAILED DESIGN AND CO-ORDINATION OF THE SERVICES BASED ON THE SPECIFICATION AND DRAWINGS. ALL PROPOSED FITTINGS WILL BE IN BLACK OR CHARCOAL TO MATCH ARCHITECTURAL METAL WORK/LANDSCAPE FURNITURE

'J' = RECOMMENDED REPLACEMENT FOR HOLOPHANE 'B' TYPE BY PHILIPS (BY PHILIPS CONTACT) TO MEET CAMDEN SPECIFICATION ARC80-ASR60CGN/9005-ARC 60W COSMOPOLIS CURVED GLASS: ELECTRONIC CONTROL GEAR NEMA SOCKET: BLACK RAL9005. FITTED WITH FREE ISSUE (FROM CONTRACTOR) TELENESA DIMMING MODULE AND PROVIDED WITH BOTH

1. NEMA TELECELL AND--

2. NEMA PHOTOCELL

3. 6M COLUMN

CAMDEN WILL ADVISE FINAL CONTROL COMBINATION DIMMING UNIT/MODULE AND TELECELL TO BE VIA TELENESA: FOR FREE ISSUE CONTACT KEVIN BRIDGE KB@TELENESA.COM EACH COLUMN REQUIRES A UKPN CONNECTION. CAMDEN CONTACT AT UKPN HILARY.SAUNDERS@UKPOWER.NETWORKS.CO.UK TO BE ORGANISED BY BLU-3

C6	APR 14	RF	'B' LUMINAIRE FOR EVERTON HOUSES CHANGED TO 'J'	RF	LG
C5	JAN 14	RF	LUMINAIRE MODIFICATIONS TO ARCHITECTS REQUIREMENTS	RF	LG
C4	NOV 13	RF			
C3	JUNE 13	RF	REDUCTION IN LUMINAIRES FOLLOWING BAM/CAMDEN CONSULTANTS	RF	LG
C2	MAY 13	RF	ADJUSTED TO CONTRACT DISCUSSIONS	RF	LG
C1	MAR 13	RF	CONTRACT ISSUE	RF	LG
REV	DATE	BY	DESCRIPTION	CHK	APP

DRAWING STATUS: CONTRACT

66-68 Hills Road, Cambridge, CB2 1LA  
Tel: +44 (0)122 355 8050 Fax: +44 (0)122 355 8051  
www.wspgroup.com

CLIENT: LONDON BOROUGH OF CAMDEN

ARCHITECT: POLLARD THOMAS EDWARDS

PROJECT: NETLEY DEVELOPMENT

TITLE: ELECTRICAL SERVICES EXTERNAL LIGHTING

SCALE @ A1: NTS

CHECKED: RF

APPROVED: LG

PROJECT No: 24452040

DESIGNED: MH

DRAWN: PL

DATE: JULY 12

DRAWING No: WSP-2040-GA-694-00-907

REV: C6

© WSP Group plc

LUMINAIRE SCHEDULE

Symbol	Label	Qty	Catalog Number	Description	Lamp	Lumens	LLF
	B			HOLOPHANE DENVER PLANE mtd at 6m	70W Metal Halide	6300	0.87
	C		SMF.250 CDMT3.AY60	HOLOPHANE SEATTLE MEDIUM column mtd at 6m	SEATTLE MEDIUM 250W CDMT	25000	0.80
	D		SELUX SEWX MEMI-2260x	MEMI-2260 wall mounted at 3m	2 X 26W CFL	1800	0.88
	DE		AS D BUT WITH REMOTE EMERGENCY BATTERY PACK IN VOID BEHIND				
	E		SELUX SEWX MEMI-2260x	MEMI-2260 wall mounted at 2.5m	2 X 26W CFL	1800	0.88
	F		DESIGN PLAN SPARTA	DESIGN PLAN	1 x 49W		
	G		SOPRANO	ASTRO	1 x 9W		
	H		DESIGN PLAN	GEMINI D215/1800/PB	21W LED		
	J		PHILIPS	SEE DESCRIPTION ON DRAWING			

PLEASE NOTE:  
LUMINAIRE REFERENCES ARE FOR THIS DRAWING ONLY