

# Camden Core Strategy 2010-2025

## Local Development Framework



If you would like this document in large print or Braille, or in another language, please contact 020 7974 5615

Find out more about this document and the LDF by visiting [camden.gov.uk/ldf](http://camden.gov.uk/ldf) or by calling the LDF hotline 020 7974 5615/2043.

Forward Planning  
London Borough of Camden  
Town Hall Extension  
Argyle Street  
London WC1H 8EQ

Published November 2010.

Camden's Local Development Framework. Core Strategy 2010.

## CS5. Managing the impact of growth and development

- 5.1 The overall approach of the Core Strategy, as set out in policy CS1, is to manage Camden's growth to make sure that its opportunities and benefits are delivered and sustainable development is achieved, while continuing to conserve and enhance the features that make Camden such an attractive place to live, work and visit. This flows from the Camden Community Strategy theme of a sustainable Camden that adapts to a growing population. Policy CS5 provides more information on our approach to managing the impact of growth in the borough.

### CS POLICY

#### CS5 – Managing the impact of growth and development

The Council will manage the impact of growth and development in Camden. We will ensure that development meets the full range of objectives of the Core Strategy and other Local Development Framework documents, with particular consideration given to:

- a) providing uses that meet the needs of Camden's population and contribute to the borough's London-wide role;
- b) providing the infrastructure and facilities needed to support Camden's population and those who work in and visit the borough;
- c) providing sustainable buildings and spaces of the highest quality; and
- d) protecting and enhancing our environment and heritage and the amenity and quality of life of local communities.

The Council will protect the amenity of Camden's residents and those working in and visiting the borough by:

- e) making sure that the impact of developments on their occupiers and neighbours is fully considered;
- f) seeking to ensure development contributes towards strong and successful communities by balancing the needs of development with the needs and characteristics of local areas and communities; and
- f) requiring mitigation measures where necessary.

#### **Making sure development achieves the objectives of the Core Strategy**

- 5.2 Central to managing Camden's future growth is the need to consider not just the scale and nature of that growth, but how it is provided and the effect on those who live in the area and the borough as a whole. All development in Camden, large or small, whether located in growth areas, highly accessible locations or in other parts of the borough, should take place in accordance with all relevant policies in the Core Strategy and the other documents that form part of Camden's Local Development Framework (see paragraph 4 in the Introduction) to ensure that the Council's vision for the borough is achieved. The Council will seek to ensure that the borough's growth brings benefits and opportunities to all.
- 5.3 The second section of this Core Strategy, *Meeting Camden's needs – Providing homes, jobs and facilities*, sets out our approach to providing the land uses, infrastructure and facilities that are needed to support Camden's communities, workers and visitors. This includes places to live, work and shop, community facilities and provision for walking, cycling and public transport. The section also sets out our approach to the unique issues faced in Central London, the home to many of the uses that contribute to London's role as a capital and major international city, as well as long-established residential communities.

- 5.4 One of the key elements of managing Camden’s growth is securing the infrastructure and services needed to support Camden’s growing numbers of residents, workers and visitors. To identify the infrastructure need in the borough in future years we commissioned the Camden Infrastructure Study 2009. This work formed the basis of the schedule in Appendix 1, which set out identified key infrastructure programmes and projects including transport, utilities, emergency services, education, health and other community facilities. It gives information on the nature of each infrastructure scheme, where it will be located, who will lead on its delivery and when it is expected to be provided. As the boundaries of the growth area are relatively tightly drawn, taking in the main development opportunities, the infrastructure to support a particular growth area may be provided outside its boundary. Please see section 19 – *Delivering and monitoring the Core Strategy* for more detail on our approach to infrastructure provision. In addition, the individual sections in the Core Strategy also contain details of infrastructure requirements and provision that are relevant to that section (for example, policy CS15 on open space and policy CS11 on transport.)
- 5.5 The third section of the Core Strategy, *A sustainable and attractive Camden – Tackling climate change and improving and protecting Camden’s environment and quality of life*, focuses on making sure that growth is sustainable and properly takes into account the character of Camden and the aspects of the borough that make it such an attractive place to live, work and visit. It sets out how we intend to make Camden a low carbon, low waste borough; deal with climate change; and protect, and where possible enhance, our built environment, heritage and open spaces. It also sets out our approach to improving the safety and health of the community.
- 5.6 Our Camden Development Policies Local Development Framework document will be one of the main mechanisms by which we will seek to deliver to vision and objectives in the Core Strategy. It sets out planning policies that provide more detail of our approach to many of the matters covered in this Core Strategy. We will use Camden Development Policies alongside the Core Strategy when we determine applications for planning permission.

### **Protecting amenity**

- 5.7 Camden’s high level of amenity – the features of a place that contribute to its attractiveness and comfort – is a major factor in the quality of life of the borough’s residents, workers and visitors and fundamental to Camden’s attractiveness and success. However, Camden’s inner London location, the close proximity of various uses and the presence of major roads and railways can mean that privacy, noise and light can be particular issues in the borough.
- 5.8 Protecting amenity is, therefore, a key part of successfully managing growth in Camden. We will expect development to avoid harmful effects on the amenity of existing and future occupiers and nearby properties or, where this is not possible, to take appropriate measures to minimise potential negative impacts. More detail and guidance on our approach to amenity is contained in Camden Development Policies policy DP26 – and our Camden Planning Guidance supplementary document. Other policies in Camden Development Policies also contribute to protecting amenity in the borough by setting out our detailed approach to specific issues, such as the impact of food, drink and entertainment uses (policy DP12), noise and vibration (policy DP28) and air quality (policy DP32)

### **Promoting successful communities**

- 5.9 A key element to our overall strategy of managing Camden’s future growth is to ensure that the opportunities and benefits of this growth are delivered in a way that meets the needs of Camden’s residents and promotes strong and successful communities. In assessing development proposals, the Council will take into account the needs and benefits of the development alongside the individual characteristics and needs of the local area and community, and will seek to strike a balance between them. Where relevant, we will take into account the cumulative impacts of developments, or particular types of development, on local areas and communities.

#### **Key evidence and references**

- Camden Together – Camden’s Sustainable Community Strategy; 2007-2012
- The London Plan (consolidated with alterations since 2004); Mayor of London; 2008



## CS11. Promoting sustainable and efficient travel

- 11.1 Camden benefits from excellent transport provision, including a direct link to continental Europe through St Pancras International; national rail services at King's Cross, St Pancras and Euston; 23 tube stations within the borough or on its boundary, 55 bus routes and 27 night bus routes. These provide excellent accessibility within Camden, to the rest of London and beyond. However, the borough also faces considerable challenges in relation to transport. Its road and public transport networks are subject to significant congestion, and air quality is a serious issue.
- 11.2 The Council needs to address these challenges and ensure that transport provision contributes towards our approach to managing the significant growth in the borough, as set out in Section 1. Policy CS11 promotes a range of sustainable transport measures and the delivery of additional infrastructure to support growth and relieve existing pressures on the transport system. It builds on, and helps to deliver, the sustainable transport priorities established in the Council's Green Transport Strategy. This aims to encourage more walking and cycling and reduce traffic in the borough by 15% from 2001 levels.



## CS11 – Promoting sustainable and efficient travel

The Council will promote the delivery of transport infrastructure and the availability of sustainable transport choices in order to support Camden's growth, reduce the environmental impact of travel, and relieve pressure on the borough's transport network.

### Improving strategic transport infrastructure to support growth

The Council will promote key transport infrastructure proposals to support Camden's growth, in particular:

- a) King's Cross station improvements;
- b) the redevelopment of Euston Station and the provision of an improved public transport interchange;
- c) Crossrail services and associated station improvements at Tottenham Court Road;
- d) improved interchange at West Hampstead;
- e) improvements to facilities at Camden's London Underground and Overground stations, including at Camden Town and Holborn; and
- f) improvements to encourage walking and cycling as part of transport infrastructure works.

The Council will protect existing and proposed transport infrastructure (including routes for walking, cycling and public transport, interchange points, depots and storage facilities) against removal or severance.

### Promoting sustainable travel

In order to support Camden's growth and to promote walking, cycling and public transport, the Council will:

- g) improve public spaces and pedestrian links across the borough, including by focusing public realm investment in Camden's town centres and the Central London area, and extending the 'Legible London' scheme;

- h) continue to improve facilities for cyclists, including increasing the availability of cycle parking, helping to deliver the London Cycle Hire Scheme, and enhancing cycle links; and
- i) work with Transport for London to improve the bus network and deliver related infrastructure, and support proposals to improve services and capacity on the tube, London Overground and Thameslink.

### Making private transport more sustainable

As part of its approach to minimising congestion and addressing the environmental impacts of travel, the Council will:

- j) expand the availability of car clubs and pool cars as an alternative to the private car;
- k) minimise provision for private parking in new developments, in particular through:
  - car free developments in the borough's most accessible locations and
  - car capped developments;
- l) restrict new public parking and promote the re-use of existing car parks, where appropriate;
- m) promote the use of low emission vehicles, including through the provision of electric charging points; and
- n) ensure that growth and development has regard to Camden's road hierarchy and does not cause harm to the management of the road network.

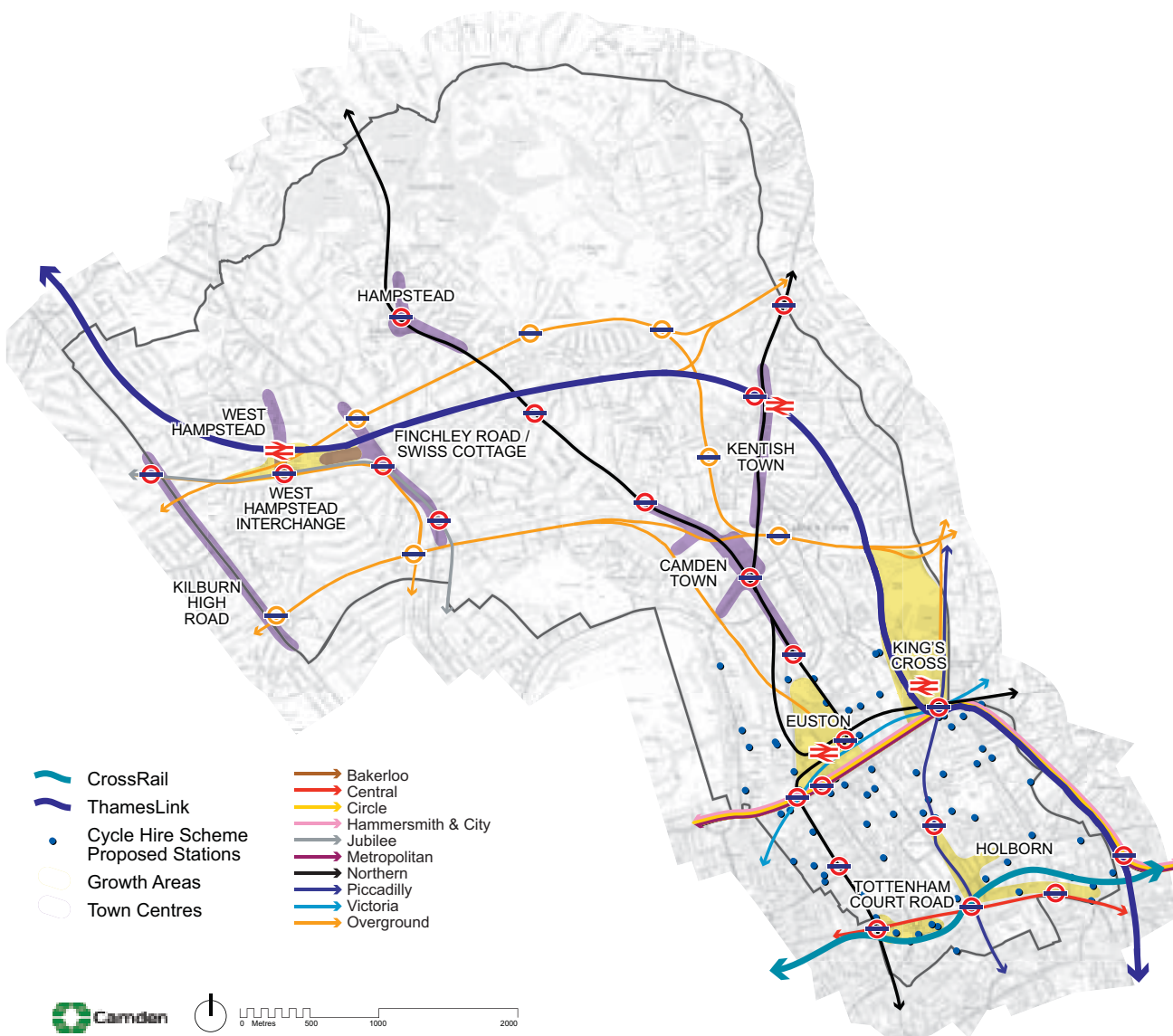
### Promoting the sustainable movement of freight

The Council will seek to reduce freight movement by road; encourage the movement of goods by canal, rail and bicycle; and minimise the impact of freight movement on local amenity, traffic and the environment.

## Improving strategic transport infrastructure to support growth

11.3 The strategic transport infrastructure projects identified in policy CS11 will play a central role in supporting future growth in the borough, with the development concentrated in locations that are, or will be, subject to significant improvements to transport facilities, services and capacity. The key infrastructure programmes and projects identified in Appendix 1 set out further details regarding these schemes, including delivery timescales and responsibilities, and sources of funding (items 39-50). Map 3 shows Camden's key existing and proposed transport infrastructure.

**Map 3: Transport**



This map is based on Ordnance Survey Material with the permission of Ordnance Survey on behalf of the Controller of Her Majesty's Stationery Office ©. Unauthorised reproduction infringes Crown copyright and may lead to prosecution or civil proceedings. Licence number LA100019726, year 2010.





11.4 All of Camden’s growth areas (see policies CS1 and CS2) will be subject to significant improvements in strategic transport infrastructure:

- King’s Cross will benefit from improved station facilities, significant tube capacity increases and improved service capacity and frequency on the Thameslink line;
- Euston will also benefit from an improved station and associated facilities and significant tube capacity increases. The Council will seek to deliver enhanced walking and cycling links to surrounding areas from both Euston and King’s Cross;
- Tottenham Court Road Station is due to be served by Crossrail by 2018 and there will be a new Crossrail station linked to Tottenham Court Road underground station. The Underground station will also benefit from substantial improvements and from additional tube capacity through planned Northern Line upgrades. The Council will work with its partners to ensure that walking links are improved around the station in order to accommodate the expected increase in pedestrian activity in the area;
- Holborn will benefit from increased tube capacity through the Piccadilly Line upgrade and, over the longer term, the Council will pursue opportunities to deliver substantial improvements to Holborn Underground station, although funding for such works has not yet been identified. The provision of a Crossrail interchange at Farringdon, located adjacent to the borough boundary in Islington, will provide additional capacity to the south east of the borough. This and measures at Tottenham Court Road may help to alleviate current pressure on Holborn station. Improvements to pedestrian signage through the ‘Legible London’ scheme should also make it easier for pedestrians to find their way around the area; and
- West Hampstead will benefit from improved service capacity at its Jubilee Line and London Overground stations, as well as increased service frequency and capacity at its Thameslink station. In addition, the Council and Transport for London are currently investigating a range of measures to improve pedestrian linkages in the interchange area between West Hampstead’s three stations, including addressing the need to widen pavements, and remodelling station entrances.

11.5 All of Camden’s town centres are served by at least one tube or Overground station, each of which will benefit from planned improvements to service capacity and, in some cases, increased service frequency (see Appendix 1 – items 43 and 44). Planned Northern Line capacity improvements have the potential to help to relieve current peak time congestion at Camden Town station. Neighbouring tube stations at Chalk Farm and Mornington Crescent will also benefit from Northern Line capacity improvements, which should also help to relieve pressure at Camden Town station. Although funding is not currently identified for the planned redevelopment of Camden Town Underground station, the Council has published a planning brief for the site and will pursue opportunities to deliver a better functioning, more accessible station that relieves congestion issues. Camden Road overground station will also benefit from planned capacity and service improvements on the North London Line.

11.6 The Council considers that the scale of transport improvements focussed on Camden’s main growth areas means that, in the event that any individual scheme is postponed or cancelled, sufficient transport infrastructure will be provided and other measures secured to support the levels of growth envisaged. For example, the range of planned tube, London Overground and rail

capacity improvements means that, if any single scheme did not occur, there will still be increased capacity on other lines. Also, walking, cycling and bus links will continue to be improved, and where appropriate, enhanced to meet reductions in planned capacity elsewhere.

- 11.7 Given the constraints on transport capacity in a densely developed area like Camden, almost every part of the existing transport infrastructure is a valuable asset. The Council will therefore seek to protect all existing and proposed facilities and links (including for Crossrail 2, also known as the Chelsea – Hackney Line), and safeguard the potential for improvements to the transport network. The Mayor of London's *Land for Transport Functions* supplementary guidance sets out further information on protecting land for transport.

## Promoting sustainable travel options

- 11.8 The Council will complement the provision of strategic transport infrastructure by working to improve local level sustainable transport measures. Camden's Local Implementation Plan (LIP) sets out how we intend to deliver more sustainable transport, and is a key mechanism for the implementation of the transport objectives set out in this Core Strategy, including applying for the necessary project funding from Transport for London.

### Walking

- 11.9 Walking is a 'zero carbon' form of travel that relieves pressure on infrastructure, both in terms of public transport infrastructure and Camden's roads. As such, the promotion of walking is an essential element of our approach to managing Camden's growth. It also provides significant wider social benefits in terms of promoting more active, healthy lifestyles (see policy CS16 *Improving Camden's health and well-being*), and helping to create more active vibrant streets and public spaces. Camden's Community Strategy seeks to improve conditions for pedestrians, and Camden's Walking Plan seeks to promote walking in the borough and to improve the street environment.
- 11.10 Policy CS14 – *Promoting high quality places and preserving our heritage* sets out the Council's approach providing attractive streets and spaces. Camden's Local Implementation Plan sets out key planned projects that will enhance our streets and spaces and provides a particular focus on the delivery of improvements in Camden's town centres and Central London. This reflects the higher level of activity in these areas, and the need to relieve current pressure on the public transport system by enhancing links between visitor generators and transport hubs. It also supports Camden's approach to future development by focusing improvements on locations that include the borough's growth areas. The Council will work with British Waterways, Natural England, other land owners/developers and users to improve the Regent's Canal and its towpath, which forms a main east-west pedestrian and cycle route through the borough (see Map 1 and policy CS15).
- 11.11 Improved pedestrian signage to help people find their way is also an important factor in encouraging more people to walk for shorter journeys, rather than using the car, tube or bus. Camden's Local Implementation Plan sets out how the Council will make it easier for people to find their way around through the 'Legible London' scheme, which provides new, simple signage for pedestrians. The Council is currently working with Transport for London and other partners, including neighbouring boroughs, to expand the initiative across the Central London Area. We will seek to extend the scheme throughout the borough – prioritising key destinations and localised centres where there is a concentration of amenities and a high level of pedestrian activity, including our town centres. New signage in these areas will be expected to reflect Legible London standards.
- 11.12 Public realm improvements will primarily be delivered by the Council using funds from Transport for London, to be sought through Camden's Local Implementation Plan. The Council's own funding and, where appropriate, developer contributions and will also be used to finance projects to promote walking. The Council will continue to work with Transport for London and neighbouring London boroughs to deliver improved pedestrian accessibility across borough boundaries. Camden is a member of the cross-borough Clear Zone Partnership, a key mechanism for delivering improvements to walking routes across Central London, linking King's Cross and Euston with Bloomsbury and Holborn, through to the River Thames and the West End (see policy DP32 in Camden Development Policies).

## Cycling

- 11.13 As with walking, cycling is a sustainable means of travel that provides the opportunity to relieve congestion as well as promoting healthy, active lifestyles. Camden's Cycling Plan (Fourth Review 2008) seeks to promote increased cycling in the borough by improving cycling facilities and routes. We will:
- ensure that all opportunities are taken to maximise the availability of new cycle parking across the borough both in new developments and more widely in any areas where there is need for increased provision, such as at town and local centres. This will principally be delivered through Camden's Parking Standards for new developments (see policy DP18 in Camden Development Policies) and as part of town centre improvement projects;
  - provide 'cycle stations' in appropriate locations across the borough. These are cycle parking facilities available to the public, usually in a secure area with restricted access. Appropriate locations would include town centres, Central London and major transport interchanges. Such stations have already been secured as part of approved schemes at King's Cross (1,000 bicycle spaces) and Regent's Place/Euston Tower (around 70 spaces).
  - improve cycle links across the borough to encourage more cycling. We will seek to ensure that developments contribute to and, where appropriate, provide appropriate links with strategic cycle routes, including the London Cycle Network (a network of radial and orbital routes for cyclists throughout London); and
  - work with Transport for London and other partners, including neighbouring boroughs, to implement the London Cycle Hire Scheme. The scheme was introduced by the Transport for London Business Plan 2009/10-2017/18, and aims to provide places, firstly in Central London, then across the capital, where people can pick up and drop off bicycles. We will seek to ensure that the scheme is extended to key destinations across the borough, including our town centres.

## Public transport

- 11.14 Camden will benefit from planned improvements to London Underground, London Overground and Thameslink service capacity, as well as the delivery of Crossrail. Between 2009 and 2020, Transport for London plans to significantly improve capacity on the Jubilee; Victoria; Northern; Piccadilly; and District, Hammersmith and City lines, as well as the London Overground North London Line, all of which pass through the borough. Also, the Thameslink train line serving St Pancras International is planned to benefit from significantly improved capacity and service frequency by 2015. Crossrail will provide a major new east-west train link through London, and help to support growth in the capital by tackling congestion and the lack of capacity on the existing rail network. The Mayor has introduced a policy in the London Plan and prepared Supplementary Planning Guidance - Use of planning obligations in the funding of Crossrail, to seek financial contributions from new developments towards the delivery of Crossrail, which is due to be completed by 2017. Please see Appendix 1 for further details on planned public transport infrastructure improvements (items 39-44).
- 11.15 In partnership with Transport for London, which manages the bus network across London, the Council will seek to ensure that Camden's growth is matched by improvements in bus services, where required. This will include provision of new bus facilities (for example, bus stops) where appropriate. Policies DP16 and DP17 in our Camden Development Policies Local Development Framework document set out the Council's expectations for new development in relation to transport capacity and public transport contributions.

## Travel Awareness

- 11.16 The Council also works to encourage more sustainable travel in schools, businesses and communities through its travel awareness programme. We also work with schools and businesses to produce Travel Plans, which provide a package of measures to encourage safe, healthy and sustainable travel options, including through reducing the need to travel and unnecessary car journeys, and promoting active means of transport such as walking and cycling. Camden is part of the North Central Travel Plan Network, a group of north and central London boroughs (supported by Transport for London) that offers advice to businesses to help them to develop travel plans.

## Making private transport more sustainable

- 11.17 The Council will continue to limit the amount of parking available for private cars. This represents a key part of our approach to addressing congestion, promoting sustainable transport choices, and facilitating the delivery of pedestrian and cycle improvements by maximising the amount of public space available to provide new walking and cycling facilities. Our approach to car parking will seek car-free development in the most accessible parts of the borough (Central London, town centres (except Hampstead) and other areas that are well-served by public transport). We will also seek car-capped developments where the provision of additional on-street parking would be harmful to parking conditions. Please see policies DP18 and DP19 in Camden's Development Policies for more on our approach.
- 11.18 For journeys where more sustainable travel options are not practical, car clubs and car pools offer an alternative to privately owned cars. Car clubs are hire schemes that allow households to avoid the costs of car ownership, deter them from using cars for a trip which is convenient without one, and reduce the amount of car parking space needed. For business journeys, car pools have many similar advantages, and can remove the need for business-users to commute by car. The Council will seek to expand the availability of car clubs and car pools by encouraging provision for them as part of proposals involving additional parking (see policy DP18 in Camden Development Policies), as well as working with operators to secure more car club spaces on Camden's roads where demand is identified.
- 11.19 Another part of the Council's strategy to promote more sustainable travel options is to allow the loss of existing public car parks, where appropriate. This helps to promote the use of sustainable transport by limiting the availability of parking spaces, and also promotes more efficient use of land in the borough. For further details, please see policy DP19 in Camden Development Policies.
- 11.20 We will also encourage low emission vehicles by increasing the availability of electric charging points across the borough. Although still contributing to congestion, these vehicles do not have the air quality impacts of ordinary cars. Where provision for the use of private cars in new developments is unavoidable, the Council will therefore seek provisions such as electric charging points (see policy DP18 in Camden Development Policies).
- 11.21 The demand for movement, deliveries and car parking on Camden's roads already exceeds the space available, meaning that effective management of Camden's road network is essential. The Council will seek to ensure that new development does not cause harm to Camden's road hierarchy, or to the ability of Council (and for strategic roads, Transport for London) to manage the road network. Policy DP21 in Camden Development Policies sets out our requirements regarding connections to the road network from developments.



11.22 A number of Camden’s centres, in particular Camden Town and Swiss Cottage, suffer from a poor pedestrian environment due to gyratory systems that hinder movement and create a poor quality public realm. This has a negative impact on local amenity and the quality of life in these centres. While the Council acknowledges that these roads are important to maintaining smooth traffic flow through London, it will work with Transport for London to investigate long-term opportunities to remove or significantly alter these gyratories for the benefit of these centres and the people that use them.

## Promoting the sustainable movement of goods

11.23 The movement of goods can have a significant impact on the environment, in terms of noise and disturbance, and air pollution. These impacts are particularly severe in an urban, densely populated borough, such as Camden. The Council will therefore seek to minimise the movement of goods and materials by road by:

- promoting alternative forms of freight movement that have lower environmental impacts, such as the use of Regent’s Canal, rail freight and the use of cycle-freight as an extension to cycle courier services; and
- seeking to deliver more efficient goods movement. We will work with our partners to explore the potential for a freight consolidation facility to serve Camden’s Central London Area. These facilities are transfer and distribution centres that consolidate loads from a number of vehicles into single loads for delivery to a specific destination or area.

11.24 We will work with our partners, including Transport for London, developers, freight operators and businesses to assess how these aims could be achieved, including for the servicing of new developments both during construction and when in use. Camden is part of the Freight Quality Partnership for Central London, which brings together retailers, freight operators, Central London boroughs, and Transport for London to consider ways to achieve more efficient and sustainable movement of freight.

11.25 The Council will also seek to ensure that the impact of construction traffic and the servicing of future developments are kept to a minimum. Policy DP20 in Camden Development Policies sets out how we will seek to minimise the impact of freight movement from development. We are working with Transport for London to investigate opportunities to provide charging points for low emission goods vehicles, which can have a lower impact than normal vehicles in terms of both air pollution and noise.

### Key evidence and references

- Camden Local Implementation Plan (LIP) 2005/06-2010/11
- Camden Green Transport Strategy 2008-2012
- Camden Walking Plan Second Edition 2006
- Camden Cycling Plan: fourth annual review 2008
- Camden Interim Parking and Enforcement Plan 2005/11
- Camden Road Network Management Plan (2006)
- Camden Streetscape Design Manual 2005
- Camden Sustainability Task Force Report on Transport
- The London Plan (consolidated with Alterations since 2004); Mayor of London; 2008
- Transport for London Business Plan 2009/10-2017/18
- Land for Transport Functions Supplementary Planning Guidance; Mayor of London; 2007
- Planning Policy Guidance (PPG) 13: Transport; ODPM; 2001
- Camden Together – Camden’s Sustainable Community Strategy 2007-2012

## CS14. Promoting high quality places and conserving our heritage

- 14.1 Camden does not have a single built character but is made up of many diverse areas, each with their own identity. The southern part of the borough, which forms part of Central London, is characterised by a high density built environment and complex mix of uses. The central part of the borough contains several town centres surrounded by areas of medium-density housing and some employment uses. The north of the borough is predominantly residential of a lower density with substantial open space at Hampstead Heath. Throughout the borough there are examples of Camden's unique architectural heritage, with many high quality buildings and places, old and new. This is reflected in our large number of conservation areas and listed buildings, which have been recognised for their special architectural or historic interest.
- 14.2 Our overall strategy is to sustainably manage growth in Camden so it meets our needs for homes, jobs and services in a way that conserves and enhances the features that make the borough such an attractive place to live, work and visit. Policy CS14 plays a key part in achieving this by setting out our approach to conserving and, where possible, enhancing our heritage and valued places, and to ensuring that development is of the highest standard and reflects, and where possible improves, its local area. Policy CS13 above and policy DP22 in Camden Development Policies set out our approach to ensuring that design in the borough is sustainable and that schemes include measures to minimise the effects of, and adapt to, climate change.

### CS POLICY

#### CS14 – Promoting high quality places and conserving our heritage

The Council will ensure that Camden's places and buildings are attractive, safe and easy to use by:

- a) requiring development of the highest standard of design that respects local context and character;
- b) preserving and enhancing Camden's rich and diverse heritage assets and their settings, including conservation areas, listed buildings, archaeological remains, scheduled ancient monuments and historic parks and gardens;
- c) promoting high quality landscaping and works to streets and public spaces;
- d) seeking the highest standards of access in all buildings and places and requiring schemes to be designed to be inclusive and accessible;
- e) protecting important views of St Paul's Cathedral and the Palace of Westminster from sites inside and outside the borough and protecting important local views.

#### Excellence in design

- 14.3 Camden has many special and unique places and historic and modern buildings of the highest quality. As well as preserving this rich heritage, we should also be contributing to it by making sure that we create buildings of equally high quality that will be appreciated by future generations. The design of the places and buildings that make up our local environment affects us all and our quality of life. High quality design is visually interesting and attractive but it is not just about what things look like. Good design makes places that put people first, are welcoming, feel safe and are enjoyable and easy to use for everyone, whether they are living in, working in or just passing through the borough.

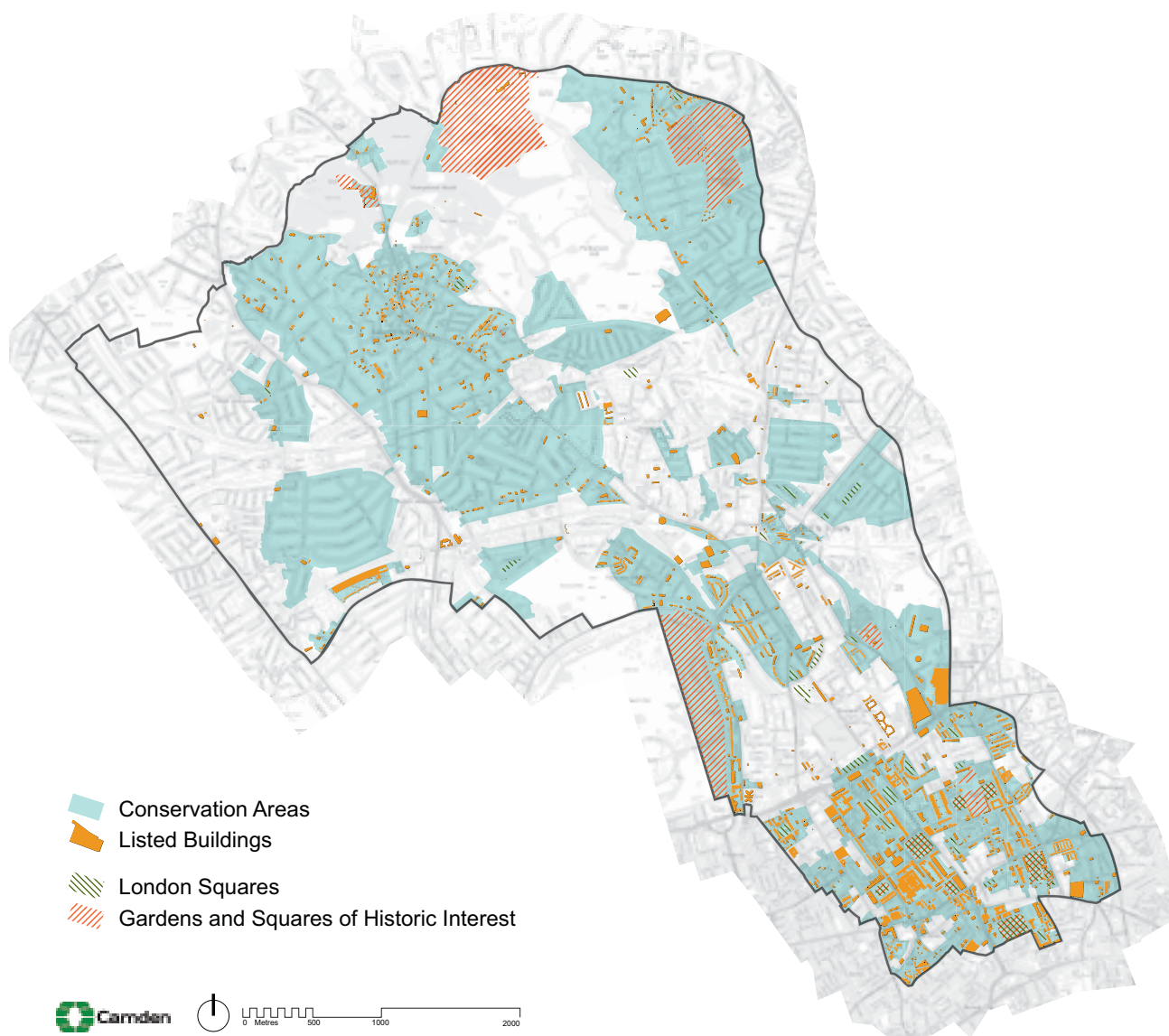


- 14.4 Development schemes should improve the quality of buildings, landscaping and the street environment and, through this, improve the experience of the borough for residents and visitors. The Council will therefore insist on high quality design throughout the borough. In accordance with government guidance in Planning Policy Statement (PPS) 1 – *Delivering Sustainable Development* we will not accept design that is considered inappropriate to its context or which fails to take opportunities to improve the character and quality of an area and the way it functions. Please see Camden Development Policies (policy DP24) for more detailed guidance on our approach to the design of new development and alterations and extensions. When assessing design, we will also take into account government/CABE guidance *By Design – Urban Design in the planning system: towards better practice* and our own Camden Planning Guidance supplementary document.
- 14.5 The Council is working with its partners to promote and celebrate excellence in design and improve public buildings, landscaping and the street environment; for example through the Camden Design Initiative, which seeks to improve public space and the built environment and encourage involvement, awareness and understanding of good design, including the bi-annual Camden Design Awards, which recognise high quality and innovative designs.
- 14.6 Good design is safe and accessible, and responds flexibly to the needs of its users. It creates buildings that have minimal negative impact on the environment, during construction and beyond. The construction and use of buildings currently accounts for around half of national carbon emissions and it is therefore vital that new and redeveloped buildings are designed to have a beneficial impact on their environment. See CS13 – *Tackling climate change through promoting higher environmental standards* and CS17 – *Making Camden a safer place* for our approach to these matters.
- 14.7 High quality design also takes account of its surroundings and what is distinctive and valued about the local area. Camden is made up of a diversity of areas, each with their own distinctive character, created by many elements such as architectural style and layout, social and economic history, landscaping and mix of uses – as summarised in the description of Camden’s character below. As Camden is a densely built-up borough where most development involves the replacement, extension or conversion of existing buildings, taking account of context and local character is particularly important. The Council will therefore expect the design of buildings and places to respond to the local area and its defining characteristics and reinforce or, if appropriate, create local distinctiveness.
- 14.8 While tall buildings offer the opportunity for intensive use, their siting and design should be carefully considered in order to not detract from the nature of surrounding places and the quality of life for those living and working around them. Applications for tall buildings will be assessed against policy CS14 and policies DP24 – *Securing high quality design* and DP25 – *Conserving Camden’s heritage* in Camden Development Policies, along with the full range of policies on mixed use, sustainability, amenity and microclimate. and other relevant policies. Effect on views, impact on local microclimate and provision of communal and private amenity space will also be important considerations.

## Camden's heritage

- 14.9 Camden has a rich architectural heritage with many special places and buildings from throughout Camden's history (see map 6). 39 areas, covering much of the borough, are designated as conservation areas, recognising their special architectural or historic interest and their character and appearance. We have prepared conservation area statements, appraisals and management strategies that provide further guidance on the character of these areas. We will take these documents into account as material considerations when we assess applications for planning permission and conservation area consent in these areas.
- 14.10 Over 5,600 buildings and structures in Camden are nationally listed for their special historical or architectural interest, and 53 of the borough's squares are protected by the London Squares Preservation Act 1931. In addition, 14 open spaces in Camden are on English Heritage's Register of Parks and Gardens of Special Historic Interest. The Council will consult with English Heritage over proposals affecting these parks and gardens. We also encourage the restoration and management of Parks and Gardens of Special Historic Interest and London Squares to enhance their value. Camden also has a generally well-preserved archaeological heritage, with 13 identified archaeological priority areas, although this can be vulnerable to modern development and land use.

### Map 6: Heritage



This map is based on Ordnance Survey Material with the permission of Ordnance Survey on behalf of the Controller of Her Majesty's Stationery Office ©. Unauthorised reproduction infringes Crown copyright and may lead to prosecution or civil proceedings. Licence number LA100019728, year 2010.



- 14.11 We have a responsibility to preserve and, where possible, enhance our heritage of important areas and buildings. Policy DP25 in Camden Development Policies provides more detailed guidance on the Council's approach to protecting and enriching the range of features that make up our built heritage.
- 14.12 Architectural detail, materials, colour and structures such as walls can make a significant contribution to the appearance of an area, but can often be altered without the need for planning permission. Cumulatively, many minor building works can gradually erode the quality of an area and undermine the quality of conservation areas. We will therefore make use of 'Article 4 Directions' in appropriate locations to bring some minor works under planning control. We are intending to introduce such measures in the conservation areas of Belsize, Hampstead, and Swiss Cottage, where loss of historic character through cumulative change is apparent. Primrose Hill conservation area already benefits from a comprehensive Article 4 Direction, which has helped to retain its high quality historic character.

### **Landscaping and public realm**

- 14.13 The quality of our streets and public spaces affects the quality of all our lives. We enjoy being in and passing through attractive, clean and well-maintained places, but are discouraged from walking in and through areas with a poor environment. An enhanced public realm should integrate transport and land use, contribute to improved walking and cycling environments, respect and reinforce local identity and character, attract people to the area and encourage the use of streets and public spaces to create diverse, vibrant and lively places.
- 14.14 The Council is committed to improving Camden's streets and public spaces and has carried out many improvement schemes with many more ongoing and planned. We have produced a Camden Streetscape Design Manual to raise the standard of street works throughout the borough. This sets standards for our own works and provides guidance for other agencies. It encourages respect for local character and promotes high quality, clutter-free design to make streets and public places that are safe and easy to use for all.
- 14.15 A number of studies on streets and spaces have been produced, particularly for the south of the borough (e.g. Bloomsbury, King's Cross and St Giles/Tottenham Court Road). These have been commissioned and funded by a range of organisations (including TfL, LDA, Design for London and UCL) sometimes in partnership with the Council. It is procedurally difficult for the Council to adopt these non-statutory documents as formal planning or other guidance. We will therefore look to draw on the best of this work to create a long-term vision for these areas, emphasising local character and providing a high quality environment for walking, which is formally agreed by the Council.
- 14.16 In order to improve the environment for walking in the borough, Camden is committed to the 'Legible London' concept which aims to improve how easily pedestrians can understand the layout of the capital and find their way around by introducing clear and consistent signage and maps. The programme has begun in Covent Garden and Bloomsbury, and future schemes are anticipated around the borough. Camden has also established a 'Place Shaping Board' to consider the most appropriate ways to shape the services, facilities, infrastructure and public realm to meet the needs of current and future populations (see section 4 – *Delivering and Monitoring the Core Strategy*).
- 14.17 Further information on measures being taken by the Council and its partners to improve the quality of our streets and public places is included in CS2 – *Growth areas*, CS8 – *Promoting Camden's centres and shops*, CS11 – *Promoting sustainable and efficient travel*, CS15 – *Protecting and improving our parks and open spaces and encouraging biodiversity*, and CS17 – *Making Camden a safer place*.
- 14.18 High quality landscaping plays an important role in the attractiveness and character of our surroundings. It can improve the setting of buildings, bring trees and other greenery into built-up areas to relieve the hard landscaping and provide shade, and provide habitats for wildlife. The Council will expect development schemes to provide a high standard of landscaping and boundary features, such as walls and fences. We will encourage appropriate use of landscaping in the form of 'green roofs', 'brown roofs' and 'green walls' which have a number of environmental benefits (e.g. in providing wildlife habitats, in helping to cool and insulate buildings and in retaining water, helping to

reduce flooding), as well as being visually attractive. More detail on our approach to landscaping is set out in the Council's Camden Planning Guidance supplementary document and policy DP22 in Camden Development Policies.

### Access

- 14.19 Good access benefits everyone. However, many people are disadvantaged by poor access to facilities and vulnerable and disadvantaged groups, such as the elderly and disabled people, can be particularly affected. Poor access can be caused by difficulties in reaching facilities or by difficulties in using the facilities themselves. The Council requires new buildings and spaces to be inclusive and accessible to all. As accessibility is influenced by perceptions as well as physical factors, buildings should also be designed to appear, as well as be, fully accessible. The Council will require Design and Access Statements for developments to show how the principles of inclusive design, ensuring access for all, have been integrated into the proposed development, and how inclusion will be maintained and managed.
- 14.20 Making roads and pavements and the spaces between buildings fully accessible is as important as making the buildings themselves accessible. The Council will seek improvements for all pedestrians to ensure good quality access and circulation arrangements, including improvement to existing routes and footways. The Camden Streetscape Design Manual and our Camden Planning Guidance supplementary document provide more detailed guidance on this issue.

### Views

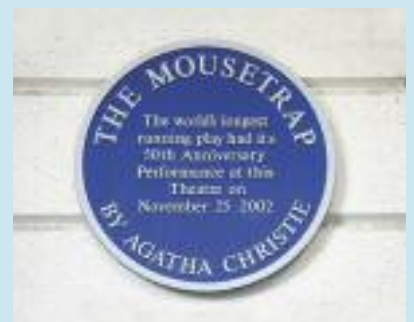
- 14.21 A number of London's most famous and valued views originate in, or extend into, Camden. These are:
- views of St Paul's Cathedral from Kenwood, Parliament Hill and Primrose Hill;
  - views of the Palace of Westminster from Primrose and Parliament Hills; and
  - background views of St Paul's from Greenwich and Blackheath.
- 14.22 The Council will protect these views in accordance with London-wide policy and will resist proposals that would harm them. Where existing buildings that affect a view are redeveloped it is expected that any replacement building will be of a height that does not harm the view. The current framework for protecting these views is set by the London Plan (policies 4B.16 – 4B.18) and the Mayor's London View Management Framework supplementary planning guidance.
- 14.23 The Council will also consider the impact of a scheme, in terms of the townscape, landscape and skyline, on the whole extent of a view ('panorama'), not just the area in the view corridor. Developments should not detract from the panorama as a whole and should fit in with the prevailing pattern of buildings and spaces. They should seek to avoid buildings that tightly define the edges of the viewing corridors and not create a crowding effect around the landmark.
- 14.24 The Council will also seek to protect locally important views that contribute to the interest and character of the borough. These may include:
- views of and from large public parks and open spaces, such as Hampstead Heath, Kenwood Estate, Primrose Hill and Regent's Park, including panoramic views, as well as views of London Squares and historic parks and gardens;
  - views relating to Regent's Canal;
  - views into and from conservation areas; and
  - views of listed and landmark buildings and monuments and statutes (for example, Centrepoint, St Stephen's, Rosslyn Hill and St George's, Bloomsbury).
- 14.25 We will seek to ensure that development is compatible with such views in terms of setting, scale and massing and will resist proposals that we consider would cause harm to them. Development will not generally be acceptable if it obstructs important views or skylines, appears too close or too high in relation to a landmark or impairs outlines that form part of the view. Further guidance on important local views is set out in our supplementary planning documents, for example in individual conservation area statements, appraisals and management strategies and the Planning Framework for the Tottenham Court Road Station and St Giles High Street Area.

## Camden's character

Camden is characterised by a great richness and variety in its built and natural environment, with a valuable heritage of local, national and international significance. The following section describes the places, buildings and features that give Camden its distinctive character.

**The southern part of the borough** is where most of Camden's future growth will take place. It forms part of Central London and has a richly varied and dense character. The planned Georgian streets and squares (e.g. Bedford, Russell, Fitzroy) of Bloomsbury are evidence of the early expansion of London in a form that was architecturally groundbreaking. Modest mews developments to the rear of the terraces contrast in scale and are a particularly characteristic type here and elsewhere in the borough. Regents Park and Nash's 1820s residential development sit at the south western boundary of the borough, contrasting with the earlier Georgian developments in the area.

King's Cross and Euston are parts of the borough that are expected to experience the most change and development over the next fifteen years. Railways have had a significant impact on the appearance of the borough from the 19th century to the present day. These brought monumental architecture and inward migration to the borough and their viaducts, cuttings, tunnels and buildings still affect the shape of development in many parts of Camden, in particular to the north of Euston Road. King's Cross was the largest station in England when it opened and is the earliest great London terminus still intact in its original form. St Pancras (by George Gilbert Scott), now the new London terminus for Eurostar, can claim to be Britain's most impressive station in terms of both architecture and engineering and the station's dramatic roof line forms an important local landmark. Euston station, its ancillary accommodation and railway lines have a major impact on the nature of its surroundings and its future redevelopment will create opportunities to improve the local environment and links between neighbouring areas.





The Inns of Court were some of the earliest establishments in the southern part of the borough. The historic buildings, courtyards and squares of Lincoln's Inn and Gray's Inn give a distinctive atmosphere to this part of Camden, and create oases away from surrounding busy roads. Camden's Central London area also contains Seven Dials with its unusual star-shaped street layout and sundial pillar and the brick, semi-industrial buildings and intimate spaces of Hatton Garden, which were developed in the 19th century to house the workshops and offices of the jewellery trade. The area remains an internationally significant jewellery quarter.

Camden is home to a large number of further education establishments and most are located in the southern part of the borough, including the University of London, London School of Tropical Medicine, Central St Martin's College of Art and Design and the Royal Academy of Dramatic Art. These play a significant role in shaping the character and appearance of this part of the borough. The south of the borough also houses a number of nationally important hospitals and medical research institutions, including Great Ormond Street Hospital, the National Hospital for Neurology and Neurosurgery and the Wellcome Trust.



The town centres of Camden Town, Kentish Town and Kilburn High Road are key elements in **the central part of the borough**. These centres developed in a piecemeal fashion along historic routes into London. They are now marked by continuous, close grained development with commercial units at ground floor level on either side of the road, with terraced housing of a similar density on the streets to the east and west, and little open space. Buildings types are generally consistent in appearance, and public houses are frequent landmarks, which echo the original inns and travellers rests along the historic routes. There is a narrow range of scale and height, and dwellings usually have small gardens to front and rear. Camden Town is strongly characterised by its markets and entertainment. These create a strong draw for tourists and influence the style and appearance of development, which is in many cases colourful and individual.

The areas between these major roads and town centres are characterised by speculative, residential development from the mid to late 19th century for the then new middle classes. These show a variety of distinctive architectural forms and scales, with detached and semi-detached houses in classical Italianate form in Belsize and an eclectic variety of styles including neo-Gothic, Queen Anne, Domestic Revival, Arts & Crafts in Fitzjohns/Netherhall, Redington/Froggnal and South Hampstead/Swiss Cottage. Gospel Oak, West Hampstead and the southern parts of Dartmouth Park were developed to a higher density with terraced houses, smaller gardens and have a more urban feel than Camden's other residential areas.

Social housing schemes are also an important element in the borough's built environment. St Andrews House on Saffron Hill is the oldest surviving public housing block in London whilst early 20th century examples include the London County Council's Bourne Estate on Leather Lane. The LLC's Ossulston Estate is considered the most important inner-city estate of the inter-war period. Post-war examples illustrate an architecturally ambitious programme of housing schemes by Camden Council following its creation in 1965, many of which are listed. The characteristic form was a megastructure of stepped terraces. This low rise, high density approach reflected traditional terraced housing, but provided light, privacy and private open space for all levels of accommodation. Examples are Brunswick Centre, and the estates of Fleet Road, Alexandra Road, Maiden Lane and Highgate New Town.

The Regent's Canal runs through the centre of the borough. Although it is often hidden from surrounding areas, it provides an area of nature conservation interest and amenity space along its course through King's Cross and Camden Town to Regent's Park.

**The northern part of the borough** benefits from the presence of the large open space of Hampstead Heath, which provides amenity and leisure space, a verdant setting to the surrounding development and famous views across London. Hampstead and Highgate are derived from medieval hamlets and have clearly defined village centres which reflect their origins. They have a variety of building types from cottages and terraces to detached houses and grand residences, with a generally densely packed, high quality urban grain of a range of styles, scales and ages. Both areas contain many high quality, architect-designed houses from the 19th and 20th centuries, many of which have become important parts of the local heritage and are listed for their national significance.



### Key evidence and references

- Conservation Area Statements/Appraisals/Management Strategies; London Borough of Camden; various dates
- Camden Walking Plan Second Edition 2006
- Camden Streetscape Design Manual 2005
- Planning Policy Guidance 16 – Archaeology and planning; DETR; 1990
- Conservation Principles, Policies and Guidance, English Heritage, 2008
- By Design: Urban Design in the Planning System – Towards Better Practice; DETR/CABE; 2000
- Planning Policy Statement 1 – Delivering Sustainable Development; ODPM; 2005
- Planning Policy Statement 5 – Planning for the Historic Environment; CLG; 2010
- Planning Policy Guidance 15 – Planning and the Historic Environment; DoE; 1994
- The London Plan (consolidated with Alterations since 2004); Mayor of London; 2008
- London View Management Framework Supplementary Planning Guidance; Mayor of London; 2007
- Sustainable design, climate change and the built environment; CABE Briefing; 2007
- Easy Access to Historic Buildings, English Heritage, 2004
- Easy Access to Historic Landscapes, English Heritage, 2005
- Seeing History in the View: Methodology for assessing the heritage value within views, English Heritage, 2008
- Guidance on Tall Buildings, English Heritage/CABE, 2007



## CS16. Improving Camden’s health and well-being

- 16.1 Improving our health and well-being requires more than improving access to medical treatment and services. There is an important link between the environment in which we live and how healthy we are, both physically and mentally. Factors such as age, gender and ethnicity influence our health and well-being, as well as wider factors such as education, employment, income, housing, social networks, air and water quality, nutrition, and access to social and public services. One of the key aims of Camden’s Community Strategy is to ensure that the health and well-being of all Camden residents improves by tackling the key health issues.
- 16.2 The Council, NHS Camden (formally known as the Primary Care Trust or PCT) and the local community (through the Local Strategic Partnership) have a number of key, shared priorities which are set out in Camden’s Joint Strategic Needs Assessment. These priorities include tackling smoking, alcohol misuse, obesity, drug misuse, as well as addressing mental health needs.
- 16.3 Policy CS16 contributes towards the overall aim of the Core Strategy to manage the impact of Camden’s future growth by setting out our approach to improving health and well-being in the borough. It should be read alongside Policy CS10 which sets out how this strategy protects community facilities, including health care facilities. Many measures set out in other parts of the Core Strategy also play a part in promoting good health and addressing health inequalities, for example:
- Protecting and improving our parks, play areas (see CS15) and leisure facilities (see CS10) which can encourage Camden’s residents to choose healthier and more active lifestyles, help to improve mental well-being and encourage social interaction;
  - improving housing standards and affordability (see CS6);
  - encouraging walking and cycling (see CS11);
  - providing job, training and educational opportunities (see CS8);
  - promoting community safety (see CS17); and
  - managing the impact of development on amenity (DP26).

### CS POLICY

## CS16 – Improving Camden’s health and well-being

The Council will seek to improve health and well-being in Camden. We will:

- a) support NHS Camden in its goal to reduce health inequalities by targeting measures to improve health in the areas with poorest health, including King’s Cross, St Pancras & Somers Town, Gospel Oak and Kilburn;
- b) protect existing health facilities in line with preferred approach CS10 – *Supporting community facilities and services*;
- c) support the provision of new or improved health facilities, in line with NHS London’s plans to consolidate and modernise its facilities;
- d) recognise and support the borough’s concentration of centres of medical excellence and their contribution to health-related research, clinical expertise, employment and training provision;
- e) recognise the impact of poor air quality on health and implement Camden’s Air Quality Action Plan which aims to reduce air pollution levels.

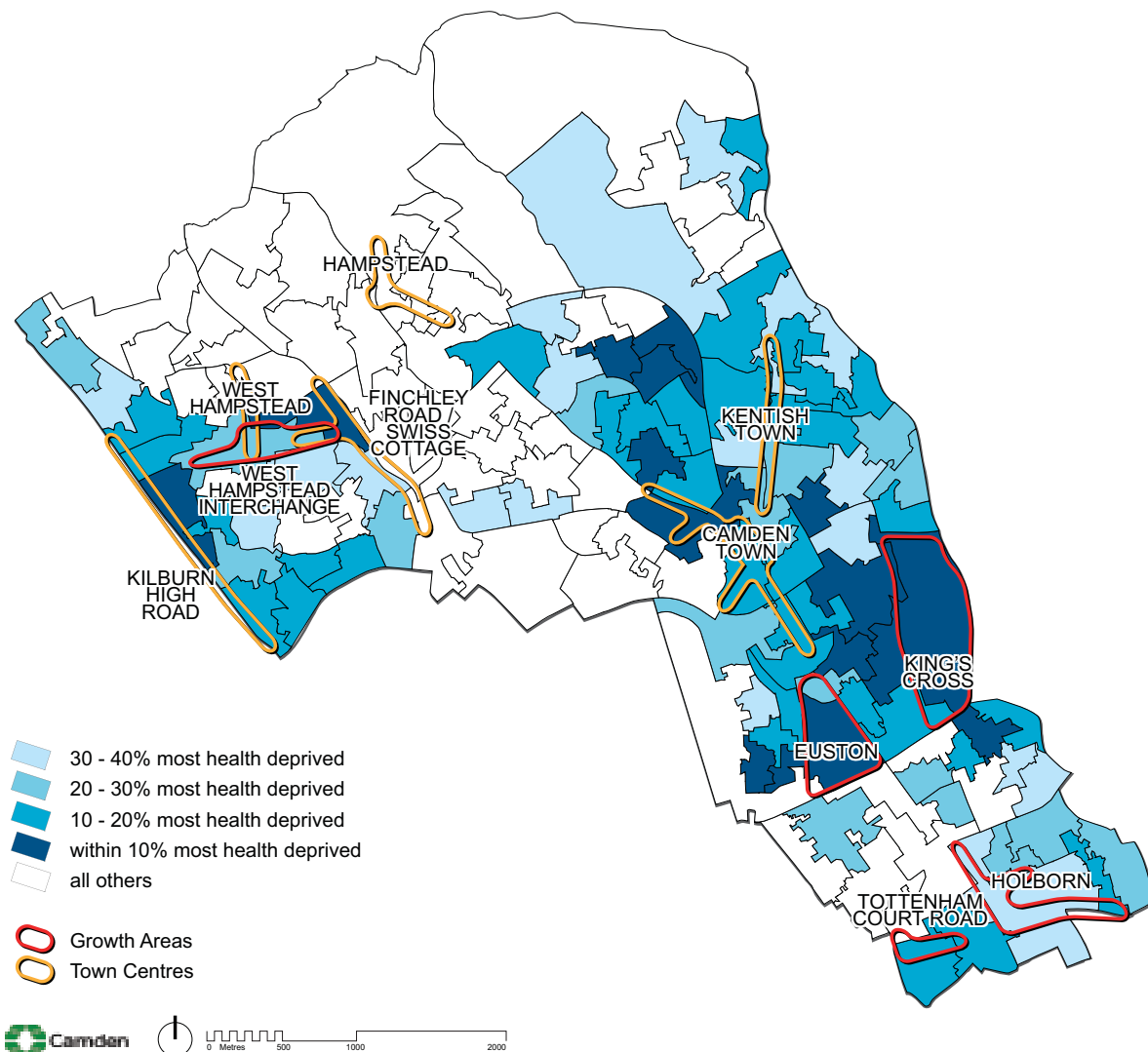


## Health inequalities

- 16.4 NHS Camden recognises that one of its biggest challenges is addressing variations in health across its area. It is committed to addressing health inequalities particularly in Camden’s deprived areas where health care requirements are greater and where residents are less likely to access the health services that are available.
- 16.5 Map 9 shows health inequalities across the borough using the Indices of Deprivation 2007, which measured rates of poor health, mortality and disability, across all ages. The wards with the poorest levels of health are represented by the darker shading. Residents living in the most deprived wards are more likely to suffer from diet-related diseases, such as heart disease, cancers and strokes, which can contribute to higher mortality rates. For example, in St Pancras and Somers Town ward the mortality rate from heart disease is 98% higher than the national rate.<sup>26</sup> There is also a stark contrast between the most affluent ward (Hampstead) and most deprived ward (St Pancras and Somers Town) where there is a 10 year gap in male life expectancy.<sup>27</sup>
- 16.6 The map also shows that the wards with the poorest health are located close to our growth areas. This provides us with the opportunity to ensure that new development in the growth areas will work alongside the initiatives discussed in this policy and throughout the Core Strategy to deliver improvements to the health and well-being of residents, particularly in the most deprived wards and Areas for Regeneration identified in the London Plan. For example, the King’s Cross growth area will include a new health centre and additional public open space.
- 16.7 In order to reduce health inequalities, the Council and NHS Camden are concentrating on reducing mortality rates in the wards suffering the highest rates, which currently include St Pancras and Somers Town, King’s Cross, Kilburn and Gospel Oak. Initiatives to improve premature mortality will be varied and include improving access to primary care (see section below on health facilities) as well as a range of health improvement and health promotion initiatives.
- 16.8 Projects and initiatives to improve resident’s health include:
- targeting people at risk of cardio vascular disease within the four most deprived wards, where it is the main cause of death;
  - enhancing GP services in the most deprived wards to provide more detailed advice and individual support to promote exercise and healthy eating and to reduce smoking and alcohol consumption;
  - promoting better access to healthy and nutritious food in the four most deprived wards through more local food growing opportunities. The Council is committed to providing 80 new growing spaces of varying sizes by 2012 and will provide support to individuals and organisations who wish to start growing their own food;
  - to reduce obesity in primary school age children in year 6 (Local Area Agreement target);
  - Camden Healthy Communities Action Group which works in the wards suffering the greatest health inequalities;
  - a Green Gym project, which allows residents to get fit by helping to improve seven of Camden’s open spaces, including Westbere Copse, Belsize Wood and Waterlow Park; and
  - the opening of eight free ‘Outdoor Gyms’ in or close to areas of open space to encourage the community to improve their health by taking more regular exercise.



## Map 9: Health Deprivation



This map is based on Ordnance Survey Material with the permission of Ordnance Survey on behalf of the Controller of Her Majesty's Stationery Office ©. Unauthorised reproduction infringes Crown copyright and may lead to prosecution or civil proceedings. Licence number LA100019726, year 2010.

### Providing and protecting health facilities

16.9 Camden has a wide range of health facilities, with four major hospitals, around 40 GP practices, and over 150 other facilities, such as dentists, optometrists, and pharmacists. Map 10 shows the distribution of health facilities across the borough. Camden's local and community health facilities are perceived to be difficult to access by local residents.<sup>28</sup> NHS Camden is therefore changing the way it delivers primary health care over the next five to ten years. The improvements are set out in the NHS Camden Strategy Plan 2008-2013 and will include the consolidation and modernisation of its facilities to develop fewer, larger health facilities.

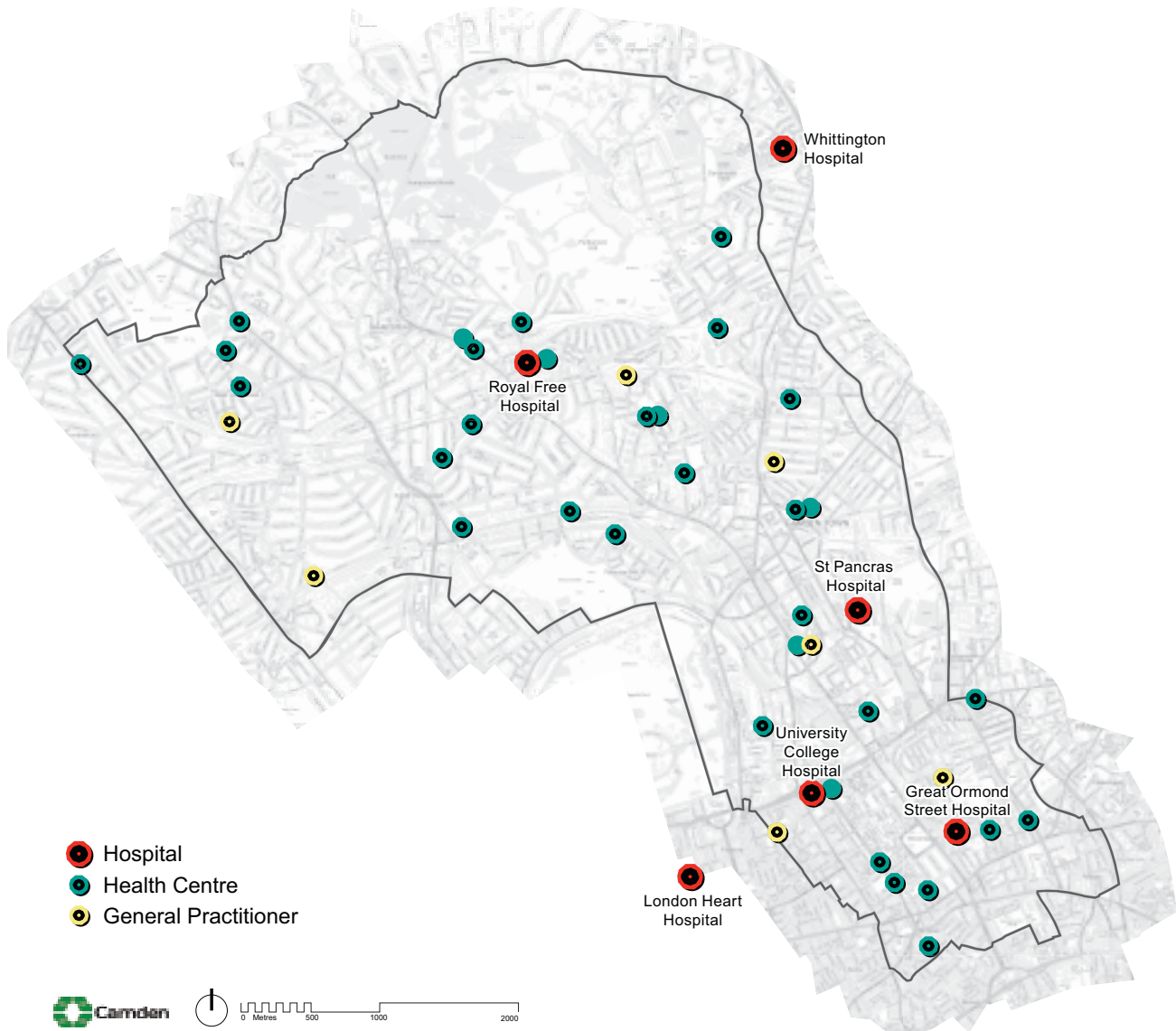
### REFERENCES

<sup>26</sup> London Health Observatory Profile Report

<sup>27</sup> Camden's Annual Public Health Report 2007/08

<sup>28</sup> Camden NHS PCT Strategy Plan 2008-2013

## Map 10: Health Facilities



This map is based on Ordnance Survey Material with the permission of Ordnance Survey on behalf of the Controller of Her Majesty's Stationery Office ©. Unauthorised reproduction infringes Crown copyright and may lead to prosecution or civil proceedings. Licence number LA100019726, year 2010.

16.10 After consultation with local residents, NHS Camden have established that ‘polyclinics’ in Camden will not be in individual buildings or health centres; but instead will involve linking the network of practices and health related facilities across the borough. By 2013, all practices in Camden will be linked to one of four of the following polyclinic networks:

- North Camden: this will involve 11 practices providing a range of additional services alongside a pilot urgent care service at the Royal Free Hospital in Hampstead;
- Kentish Town: this polyclinic network will cover two large GP practices, one of which has been redeveloped and now provides a range of services including nursing, dental access, out-patient and diagnostic services and a range of healthy living activities;
- South Camden: this will link all the practices in south Camden. NHS Camden will commission an urgent care centre and a new practice for this polyclinic. The location of the new facilities is subject to a site search and further public consultation;
- West Camden: this polyclinic network will be based around the Belsize Priory area in Kilburn.

NHS Camden will also commission a new health centre close to King’s Cross station, in the King’s Cross growth area.

- 16.11 As well as Camden's network of GP surgeries, health centres and dentists, we also have a significant concentration of secondary health facilities in the borough. These include four general hospitals, six specialist hospitals and a range of centres that provide care and support for the elderly, children and families, for people with mental health needs, for the mentally ill and many other groups. Policy CS6 contains more information on residential care facilities.
- 16.12 The Council will support the provision of additional health care facilities and will work with NHS Camden and other service providers to make sure the borough has a necessary supply and distribution of premises to meet Camden's health care needs. (see Appendix 1 – *Key infrastructure programmes and projects* – items 13-20). Existing health care facilities are protected by policy CS10 – *Supporting community facilities and services*.

### **Centres of medical excellence**

- 16.13 Camden has an internationally important concentration of medical education, research and care institutions. These make a significant contribution to the borough and the nation by providing healthcare facilities, specialist research, employment and education opportunities, and by encouraging innovation. We will seek to support these institutions, which include the University College London Hospital (UCLH), the Royal Free Hospital, Great Ormond Street Hospital and the Wellcome Trust, and balance their requirements with those of other sectors and the local community.

### **Air quality**

- 16.14 Camden suffers from poor air quality which impacts on human health, particularly the very young, older people and those with existing heart and lung conditions. The avoidance of localised air pollution is therefore very important in avoiding a potential negative impact on health and on the environment. The Council has declared the whole borough an Air Quality Management Area (AQMA) for failing to meet the government's health based air quality objectives for nitrogen dioxide and particulate matter. An Air Quality Action Plan has been produced setting out measures to reduce air pollution emissions from a variety of sources including new developments. Policy DP32 in our Camden Development Policies Local Development Framework document sets out how we will expect developments to reduce their impact on air quality. Please also see CS11 – *Promoting sustainable and efficient travel* for more on our approach to improving air quality through transport measures.

### **Contaminated land**

- 16.15 In order to protect the health and well-being of local residents, workers and visitors, the Council will expect proposals for the redevelopment of sites that are known to be contaminated, have the potential to be contaminated, or are located in proximity to such sites to take appropriate remedial action to the Council's satisfaction. For example, sites that have been used for vehicle repair, industrial processes and petrol stations could have land contamination issues. Remedial action is particularly important in developments where people will have access to the ground for gardening, play or planting food for consumption. Please refer to Planning Policy Guidance 23 – Planning and Pollution Control, the Council's Contaminated Land Strategy and our Camden Planning Guidance supplementary document for more information.

#### **Key evidence and references**

- Camden Joint Strategic Needs Assessment
- Camden's Air Quality Action Plan
- Good food for Camden: The healthy and sustainable food strategy (2009-2012)
- NHS Camden Strategy Plan 2008-2013
- Camden PCT Commissioning Strategy Plan 2007
- Camden PCT Annual Public Health reports 1998 to 2007
- Camden PCT Estates Strategy 2006
- Health Issues in Planning: Best Practice Guidance, Mayor of London 2007

# Camden Development Policies 2010-2025

## Local Development Framework



**If you would like this document in large print  
or Braille, or in another language, please  
contact 020 7974 5615**

Find out more about this document and the LDF by visiting [camden.gov.uk/ldf](http://camden.gov.uk/ldf)  
or by calling the LDF hotline 020 7974 5615/2043.

Forward Planning  
London Borough of Camden  
Town Hall Extension  
Argyle Street  
London WC1H 8EQ

Published November 2010.

Camden's Local Development Framework. Development Policies.

## DP20. Movement of goods and materials

- 20.1 Transport of goods and materials is essential to the economy, but if not managed sustainably it can be harmful to the environment, and cause congestion. As a dense, urban inner London borough the movement of goods in Camden can have particularly strong impacts in terms of traffic movement, noise and air pollution and, in some circumstances, impact on the quality of life of residents. Core Strategy Policy CS11 – Sustainable and efficient travel states that the Council will seek to minimise the movement of goods and materials by road, encourage the use of more sustainable modes of freight movement, and to minimise the impact of the movement of goods and materials on local amenity, traffic and the environment.
- 20.2 Policy DP20 builds on this by setting out the Council’s requirements for new developments in relation to the movement of goods and materials both during construction and when in operation. It should be read in conjunction with policy DP16 – Development and transport implications and Core Strategy policy CS11.

### DP POLICY

#### DP20 – Movement of goods and materials

##### Minimising the movement of goods and materials by road

In order to minimise the movement of goods and materials by road the Council will:

- a) expect development that would generate significant movement of goods or materials both during construction and in operation to minimise the movement of goods and materials by road, and consider the use of more sustainable alternatives such as rail and canal links;
- b) promote the development and use of freight consolidation facilities and other initiatives with potential to reduce the impact of goods vehicles, and encourage the use of cycle courier services for local deliveries; and
- c) seek to promote and protect facilities for the movement of goods by rail and water, including facilities for transfer between road, rail and canal.

##### Minimising the impact of the movement of goods and materials by road

The Council will expect development that would generate significant movement of goods or materials by road, both during construction and in operation, to:

- d) be located close to the Transport for London Road Network or other Major Roads;
- e) avoid any additional need for movement of vehicles over 7.5 tonnes in predominantly residential areas;
- f) accommodate goods vehicles on site; and
- g) seek opportunities to minimise disruption for local communities through effective management, including through the optimisation of collection and delivery timings and the use of low emission vehicles for deliveries.



## **Minimising the movement of goods and materials by road**

### **Movement of goods by rail and water**

- 20.3 The Council recognises the problems that are caused by long distance movement of goods by road, and the potential advantages of using rail and water as an alternative. The North London Line, the Gospel Oak to Barking Line and the West Coast Mainline are already used for significant volumes of rail freight. The Regent's Canal provides the potential for more sustainable, lower impact water borne movement of freight. It is the only navigable waterway in Camden, and is not currently used for any significant volume of freight movement.
- 20.4 Per tonne carried, rail freight produces nearly 90% fewer emissions than HGVs (London Rail Freight Strategy 2007). No equivalent figures are available for canal freight, but canal movement has minimal social and environmental costs compared with the noise/vibration, air pollution and visual intrusion that can be created by heavy goods vehicles.
- 20.5 Regent's Canal is thought to be an economically viable route for some freight movements, notably the removal of demolition waste from canal-side sites. The Council will expect new developments along or close to the Canal to consider its use for the movement of goods and materials, and to contribute to the improvement of the Canal towpath, where appropriate. Developers should also make the most of opportunities to use rail links to move goods and materials.
- 20.6 We will protect the existing aggregate handling facility at King's Cross, which is a modern facility re-engineered in association with works for the Channel Tunnel Rail Link. We will also protect other track-side and canal-side sites that are brought forward for transfer use or processing rail and canal freight if their benefits outweigh any harm.

### **Efficient freight movement**

- 20.7 The Camden Core Strategy promotes the use of freight consolidation as a key measure in reducing the number of trips made by goods vehicles, and indicates that there may be potential for a freight consolidation facility serving Camden's Central London Area (Core Strategy paragraph 11.23). The Council will expect developments to take advantage of existing freight consolidation facilities for service deliveries, where they exist. The Council will support proposals for freight consolidation facilities, subject to the other policy measures set out in our Local Development Framework.
- 20.8 As part of its approach to minimising road freight, the Council will discourage frequent deliveries of biomass fuel associated the sustainability and renewable energy requirements set out in policy DP22 and Core Strategy policy CS13 and in relation to climate change and sustainable design and construction. Paragraph 32.6 below addresses the air quality impacts associated with the burning of biomass fuel.



### Cycle freight

- 20.8 The Council will promote the use of cycle-freight as an extension to cycle courier services by encouraging developers to make provision for cycle freight as part of Delivery and Servicing Management Plans. This provides the potential to manage deliveries in a way that is zero carbon, has little or no noise or air pollution implications, and has a minimal impact on congestion.

### Minimising the impact of the movement of goods and materials by road

- 20.9 Goods vehicles, particularly heavy goods vehicles, can have negative impacts on local amenity and traffic movement in certain areas. Examples are areas suffering from poor air quality, areas where many delivery points are located close together (such as town centres), residential areas and narrow roads. Goods vehicles manoeuvring, loading and unloading add to pollution, and may cause obstructions and congestion, inconvenience and danger to pedestrians and other road users, and damage to pavements. The Council actively encourages a number of measures with potential to mitigate these impacts.

### Moving goods and materials on appropriate roads

- 20.10 Policy DP21 – *Development connecting to the highway network* seeks to guide all forms of transport to the appropriate parts of Camden’s road hierarchy. The roads considered to be most suitable for use by lorries and other heavy goods vehicles are those in the Transport for London Road Network and others designated as Major Roads. It will not usually be possible for development to directly access or be loaded from the Transport for London Road Network, but new development that will be served by heavy goods vehicles should be located to minimise the use of district and local roads for the movement of goods, particularly roads which provide primarily for access to residential properties.
- 20.11 The majority of service trips in central and inner London are made by freight vehicles of less than 7.5 tonnes gross vehicle weight, and this is the maximum size of vehicle that should be accommodated in residential areas on a daily basis. A number of weight limits have been introduced across largely residential parts of the borough, the largest of which covers an area between Camden Road and Kentish Town Road, and between Fortess Road and Highgate Road, extending up to Highgate. In this area, goods vehicles exceeding 7.5 tonnes are not permitted except for access.



### **Accommodating goods vehicles on site**

- 20.12 The impact of goods vehicles can be reduced where a loading and unloading bay is included within a development, particularly where the bay can be enclosed. Developments that will need to be serviced by vehicles other than bicycles or cars should incorporate space within the site for goods vehicles wherever it is feasible to do so. The space required for service vehicles is set out in the Council's Parking Standards at Appendix 2.

### **Construction management plans**

- 20.13 Where appropriate, the Council will ensure that applicants provide Construction Management Plans to demonstrate how a development will minimise impacts from the movement of goods and materials during the construction process. Construction Management Plans should deal with the hours of site activity; pick-up and delivery times for materials and equipment; limits on construction vehicle size; trip numbers and routes; the safety of road users during construction; and any temporary use of the highway for siting of construction plant. They should also deal with any temporary disruption or severance of highway links needed during the development process, as well as any other relevant measures needed to manage the construction phase.
- 20.14 Our Camden Planning Guidance supplementary document sets out further details regarding the Council's requirements for Construction Management Plans. See also policy DP26 for information regarding the Council's approach to managing the impact of the construction process on local amenity.

### **Effective management of servicing and deliveries**

- 20.15 The Council will seek Delivery and Servicing Management Plans for developments that are likely to generate a significant need for the movement of goods and materials when occupied, in order to ensure that potential impacts are minimised.
- 20.16 The way that trips are managed will influence their impact on local communities, traffic movement and the environment. Delivery timings can also have a significant influence on the impact of goods movement, both on the highway network (including site specific and cumulative impacts), and on residential amenity from deliveries made out of working hours. The Council will therefore ensure that delivery timings are managed to optimal effect through the use of Delivery and Servicing Management Plans. We will also control the impact of goods vehicles through waiting and loading restrictions.
- 20.17 The Council will promote the use of quiet and low-pollution vehicles such as electric vehicles by encouraging developers to make provision for the use of such vehicles as part of Delivery and Servicing Management Plans. Low emission vehicles can significantly reduce noise and air pollution, and therefore offer the opportunities for necessary freight trips to be undertaken using vehicles that have a much lower impacts than standard freight vehicles.
- 20.18 Our Camden Planning Guidance supplementary document sets out further details regarding the Council's requirements for Delivery and Servicing Management Plans.

#### **Key evidence and references**

- Camden Local Implementation Plan (LIP) 2005/06 – 2010/11
- Camden Green Transport Strategy 2008 – 2012
- The London Plan (consolidated with Alterations since 2004); Mayor of London; 2008
- Planning Policy Guidance (PPG) 13: Transport; ODPM; 2001
- West London Canal Network Study – Phase 1 & 2: Developing Water Borne Freight on the West London Canal Network; Transport for London/ British Waterways London; September 2005

# Improving and protecting our environment and quality of life

## DP24. Securing high quality design

- 24.1 Core Strategy policy CS14 – *Promoting high quality places and conserving our heritage* sets out the Council’s overall strategy on promoting high quality places, seeking to ensure that Camden’s places and buildings are attractive, safe, healthy and easy to use and requiring development to be of the highest standard of design that respects local context and character. Camden has a unique and rich built and natural heritage, with many areas with their own distinct character, created by a variety of elements including building style and layout, history, natural environment including open spaces and gardens, and mix of uses. We have a duty to respect these areas and buildings and, where possible, enhance them when constructing new buildings and in alterations and extensions.
- 24.2 Policy DP24 contributes to implementing the Core Strategy by setting out our detailed approach to the design of new developments and alterations and extensions. These principles will ensure that all parts of Camden’s environment are designed to the highest possible standards and contribute to providing a healthy, safe and attractive environment.
- 24.3 The Core Strategy also sets out our approach to other matters related to design, such as tackling climate change through promoting higher standards (CS13), the importance of community safety and security (CS17) and protecting amenity from new development (CS5). Further guidance on design is contained in our Camden Planning Guidance supplementary document.

### DP POLICY

#### DP24 – Securing high quality design

The Council will require all developments, including alterations and extensions to existing buildings, to be of the highest standard of design and will expect developments to consider:

- |   |  |
|---|--|
| <ul style="list-style-type: none"> <li>a) character, setting, context and the form and scale of neighbouring buildings;</li> <li>b) the character and proportions of the existing building, where alterations and extensions are proposed;</li> <li>c) the quality of materials to be used;</li> <li>d) the provision of visually interesting frontages at street level;</li> </ul> | <ul style="list-style-type: none"> <li>e) the appropriate location for building services equipment;</li> <li>f) existing natural features, such as topography and trees;</li> <li>g) the provision of appropriate hard and soft landscaping including boundary treatments;</li> <li>h) the provision of appropriate amenity space; and</li> <li>i) accessibility.</li> </ul> |
|---|--|



## Promoting good design

- 24.4 The Council is committed to design excellence and a key strategic objective of the borough is to promote high quality, sustainable design. This is not just about the aesthetic appearance of the environment, but also about enabling an improved quality of life, equality of opportunity and economic growth. We will therefore apply policy DP24 to ensure that all developments throughout the borough, including alterations and extensions to existing buildings, are of the highest standard of design. In accordance with government guidance in Planning Policy Statement (PPS) 1 – *Delivering Sustainable Development* we will not accept design that is inappropriate to its context or which fails to take opportunities to improve the character and quality of an area and the way that it is used by residents and visitors.
- 24.5 Camden is a densely built-up borough where most development involves the replacement, extension or conversion of existing buildings. Design should respond creatively to its site and its context. This concerns both smaller-scale alterations and extensions and larger developments, the design and layout of which should take into account the pattern and size of blocks, open spaces, gardens and streets in the surrounding area (the ‘urban grain’).
- 24.6 The Council seeks to encourage outstanding architecture and design, both in contemporary and more traditional styles. Innovative design can greatly enhance the built environment and, unless a scheme is within an area of homogenous architectural style that is important to retain, high quality contemporary design will be welcomed. When assessing design, we will take into account government/CABE guidance *By Design – Urban Design in the planning system: towards better practice* and our own Camden Planning Guidance supplementary document.
- 24.7 Development should consider:
- the character and constraints of its site;
  - the prevailing pattern, density and scale of surrounding development;
  - the impact on existing rhythms, symmetries and uniformities in the townscape;
  - the compatibility of materials, their quality, texture, tone and colour;
  - the composition of elevations;
  - the suitability of the proposed design to its intended use;
  - its contribution to public realm, and its impact on views and vistas; and
  - the wider historic environment and buildings, spaces and features of local historic value.
- 24.8 Buildings should be designed to be as sustainable as possible. Environmental design and construction measures are set out in Policy DP22 – *Promoting sustainable design and construction*. Sustainable development also embraces principles of social sustainability which can be addressed by new development which:
- provides comfortable, safe, healthy and accessible space for its users;
  - is fit for purpose and can accommodate future flexibility of use;
  - provides a mix of uses and types of accommodation and provides for a range of needs within the community; and
  - provides sufficient amenity space for the promotion of health and wellbeing.



- 24.9 The re-use of existing buildings preserves the 'embodied' energy expended in their original construction, minimises construction waste and reduces the use of new materials. Many historic buildings display qualities that are environmentally sustainable and have directly contributed to their survival, for example the use of durable, natural, locally sourced materials, 'soft' construction methods, good room proportions, natural light and ventilation and ease of alteration. The retention and adaptation of existing buildings will be encouraged.
- 24.10 Due to the dense nature of Camden with extensive range and coverage of heritage assets, such as conservation areas, numerous listed buildings and five strategic views and two background views crossing the borough, the Council does not consider that it is practical to identify broad areas either suitable, or not suitable, for tall buildings. In the borough, a site may be suitable for a tall building while adjacent sites are not, due to impact on either views, conservations areas or listed buildings. Indeed, in some cases, suitability for a tall building differs across a single site. Given Camden's strategic environmental characteristics, the entire borough is considered as being within the 'sensitive' category, as defined by the English Heritage/CABE Guidance on Tall Buildings (2007). Tall building proposals in Camden will therefore merit detailed design assessments. As part of the revision of the Camden Planning Guidance SPD further clarity will be provided on tall buildings and design issues in Camden.

## Respecting local character

- 24.11 Given the highly built-up nature of Camden, careful consideration of the characteristics of a site, features of local distinctiveness, and the wider context is needed in order to achieve high quality development which integrates into its surroundings.
- 24.12 In order to best preserve and enhance the positive elements of local character within the borough, we need to recognise and understand the factors that create it. Designs for new buildings, and alterations and extensions, should respect the character and appearance of the local area and neighbouring buildings. Within areas of distinctive character, development should reinforce those elements which create the character. Where townscape is particularly uniform attention should be paid to responding closely to the prevailing scale, form and proportions and materials. In areas of low quality or where no pattern prevails, development should improve the quality of an area and give a stronger identity.
- 24.13 Development should not undermine any existing uniformity of a street or ignore patterns or groupings of buildings. Overly large extensions can disfigure a building and upset its proportions. Extensions should therefore be subordinate to the original building in terms of scale and situation unless, exceptionally, it is demonstrated that this is not appropriate given the specific circumstances of the building. Past alterations or extensions to surrounding properties should not necessarily be regarded as a precedent for subsequent proposals for alterations and extensions.
- 24.13 Design and Access statements should include an assessment of local context and character, and set out how the development has been informed by, and responds to it. We have prepared a series of Conservation Area Statements, Appraisals and Management Plans which describe the character and appearance of individual conservation areas and set out how the Council considers each can be conserved and enhanced. These should be used by developers to inform their understanding of the special character of the area, and we will take these into account when assessing development proposals in conservation areas. Development Policy DP25 – *Conserving Camden's heritage* provides further guidance on the preservation and enhancement of the historic environment.

## Detailing and materials

- 24.15 Architectural detailing should be carefully integrated into a building. In new development, detailing should be carefully considered so that it conveys quality of design and creates an attractive and interesting building. Architectural features on existing buildings, such as cornices, mouldings, architraves, porches and chimneys should be retained wherever possible, as their loss can harm a building by eroding its detailing. The insensitive replacement of windows and doors and the cladding and painting of masonry can also spoil the appearance of buildings and can be particularly damaging if the building forms part of a uniform group.
- 24.16 Schemes should incorporate materials of an appropriately high quality. The durability and visual attractiveness of materials will be carefully considered along with their texture, colour and compatibility with existing materials. Alterations and extensions should be carried out in materials that match the original or neighbouring buildings, or, where appropriate, in materials that complement or enhance a building or area.

## Contributing to the street frontage

- 24.17 Buildings should be visually interesting at street level, with entrances and windows used to create active frontages, which allow overlooking of public areas, provide a sense of vitality and contribute to making Camden a safer place (see Core Strategy policy CS17). Ground floors should be occupied by active uses and should not turn their back on streets and other public spaces.

## Incorporating building services equipment

- 24.18 Building services equipment, such as air cooling, heating, ventilation and extraction systems, lift and mechanical equipment, as well as fire escapes, ancillary plant and ducting should be contained within the envelope of a building or be located in a visually inconspicuous position.

## Responding to natural features

- 24.19 New developments should respond to the natural assets of a site and its surroundings, such as slopes and height differences, trees and other vegetation. Extensions and new developments should not cause the loss of any existing natural habitats, including private gardens. Core Strategy policy CS15 – *Protecting and improving our parks and open spaces and encouraging biodiversity* provides further guidance on nature conservation in Camden and the Council's strategy for trees.
- 24.20 Development within rear gardens and other undeveloped areas can often have a significant impact upon the amenity and character of an area. Gardens help shape their local area, provide a setting for buildings and can be important visually. Therefore they can be an important element in the character and identity of an area (its 'sense of place'). We will resist development that occupies an excessive part of a garden, and where there is a loss of garden space which contributes to the character of the townscape.
- 24.21 Development will not be permitted which fails to preserve or is likely to damage trees on a site which make a significant contribution to the character and amenity of an area. Where appropriate the Council will seek to ensure that developments make adequate provision for the planting and growth to maturity of large trees.





## Incorporating Landscaping

24.22 As with buildings, consideration of context is essential in the design of new hard and soft landscaping. Hard landscape elements (surfaces, boundary treatments etc), and the materials from which they are made, play a significant role in defining the character and attractiveness of a site or area and reinforcing local distinctiveness. New planting can contribute to the attractiveness of a development, soften and balance the impact of buildings and contribute to the biodiversity value of a site. Effective maintenance is often essential to the success of soft landscaping (shrubs, grass etc) and, where appropriate, the Council will expect planting plans to be accompanied by a maintenance schedule. New hard and soft landscaping should be of high quality and should positively respond to its local character.

## Providing amenity space

24.23 Private outdoor amenity space can add significantly to resident's quality of life and applicants are therefore encouraged to explore all options for the provision of new private outdoor space. Gardens, balconies and roof terraces are greatly valued and can be especially important for families. However, the densely built up nature of the borough means that the provision of private amenity space can be challenging, and the Council will require that the residential amenity of neighbours be preserved, in accordance with policy DP26 – *Managing the impact of development on occupiers and neighbours* and Core Strategy policy CS5 – *Managing the impact of growth and development*.

## Accessibility

24.24 In line with policy DP29 – *Improving access* the Council will expect all buildings and places to meet the highest practicable standards of access and inclusion. Any adaptation of existing buildings must therefore address this issue and respond to access needs whilst ensuring that alterations are sympathetic to the building's character and appearance. Policy DP25 – *Conserving Camden's heritage* provides further guidance on providing access to listed buildings.

### Key evidence and references

- By Design: Urban Design in the Planning System – Towards Better Practice; DETR/CABE; 2000
- Planning Policy Statement (PPS) 1 – Delivering Sustainable Development, 2005
- Planning Policy Statement (PPS) 12 – Local Spatial Planning, 2008
- Making design policy work, CABE; 2005
- The London Plan (consolidated with alterations since 2004); Mayor of London; 2008
- Building in Context, CABE/English Heritage, 2002
- Tree and Woodland Framework for London, Mayor of London, 2005

## DP26. Managing the impact of development on occupiers and neighbours

- 26.1 Camden's Core Strategy seeks to sustainably manage growth so that it takes place in the most appropriate locations and meets our needs while continuing to conserve and enhance the features that make Camden such an attractive place to live, work and visit (see policy CS1). Promoting and protecting high standards of amenity is a key element in this and will be a major consideration when the Council assesses development proposals. Core Strategy policies CS5 – *Managing the impact of growth and development* and CS14 – *Promoting high quality places and conserving our heritage* set out our overall approach to protecting the amenity of Camden's residents, workers and visitors, a major factor in people's quality of life. Policy DP26 contributes to the implementation of the Core Strategy by making sure that the impact of a development on occupiers and neighbours is fully considered.

### DP POLICY

#### DP26 – Managing the impact of development on occupiers and neighbours

The Council will protect the quality of life of occupiers and neighbours by only granting permission for development that does not cause harm to amenity. The factors we will consider include:

- a) visual privacy and overlooking;
- b) overshadowing and outlook;
- c) sunlight, daylight and artificial light levels;
- d) noise and vibration levels;
- e) odour, fumes and dust;
- f) microclimate;
- g) the inclusion of appropriate attenuation measures.

We will also require developments to provide:

- h) an acceptable standard of accommodation in terms of internal arrangements, dwelling and room sizes and amenity space;
- i) facilities for the storage, recycling and disposal of waste;
- j) facilities for bicycle storage; and
- k) outdoor space for private or communal amenity space, wherever practical.

- 26.2 Development should avoid harmful effects on the amenity of existing and future occupiers and to nearby properties. When assessing proposals the Council will take account the considerations set out in policy DP26. The Council's Camden Planning Guidance supplementary document contains detailed guidance on the elements of amenity.

#### Visual privacy, overlooking, overshadowing, outlook, sunlight and daylight

- 26.3 A development's impact on visual privacy, overlooking, overshadowing, outlook, access to daylight and sunlight and disturbance from artificial light can be influenced by its design and layout, the distance between properties, the vertical levels of onlookers or occupiers and the angle of views. These issues will also affect the amenity of the new occupiers. We will expect that these elements are considered at the design stage of a scheme to prevent potential negative impacts of the development on occupiers and neighbours. To assess whether acceptable levels of daylight and sunlight are available to habitable spaces, the Council will take into account the standards recommended in the British Research Establishment's *Site Layout Planning for Daylight and Sunlight – A Guide to Good Practice (1991)*.



## Artificial lighting levels

- 26.4 Lighting creates a sense of safety and can enable activities in the evenings and at night. It can be used to highlight landmark buildings and add vitality to our streets. Lighting can increase the potential for natural surveillance and, where used correctly, can reduce the opportunity for criminal activity and increase the likelihood of it being challenged and/or reported. However, poorly designed internal and external lighting or lighting that operates for an excessive period of time is a form of pollution that can harm the quality of life for those living nearby, affect wildlife and waste energy. Camden's dense character means that light pollution can be a bigger problem in the borough than in lower density areas where uses are not so close together. For example, lighting from conservatories can affect neighbours living above, as well as to the sides and rear, and the lighting of advertisements can affect people living nearby. Glare and light spillage from poorly designed lighting can make it less easy to see things at night and effect wildlife as well as people. Lighting should only illuminate the intended area and not affect or impact on its surroundings. Schemes involving floodlighting and developments in sensitive areas, such as adjacent to sites of nature conservation importance, should employ a specialist lighting engineer accredited by the Institute of Lighting Engineers to ensure that artificial lighting causes minimal disturbance to occupiers and wildlife. For further details on lighting and occupiers and biodiversity please see our Camden Planning Guidance supplementary document.

## Noise and vibration

- 26.5 Noise/vibration pollution has a major effect on amenity and health and can be a particularly significant issue in Camden given the borough's dense urban nature. More detail on how to prevent disturbance from noise and vibration, including the requirement for mitigation measures can be found in policy DP28.

## Odours, fumes and dust

- 26.6 Camden suffers from extremely poor air quality which has a harmful impact on health and the environment. More detail on how the Council is tackling poor air quality can be found in policy DP32. Camden Planning Guidance provides information on how developments should be designed to prevent occupants from being exposed to air pollution, including mitigation measures.





26.7 Odours, fumes and dust can be generated from commercial cooking, industrial process and construction and demolition. We will require all development likely to generate odours to prevent them from being a nuisance by installing appropriate extraction equipment and other mitigation measures. Further details on mitigation measures and where extraction equipment should be located can be found in Camden Planning Guidance. Further details on limiting noise from extraction equipment can be found in DP28. The Council will limit the disturbance from dust due to construction and demolition by expecting developers and their contractors to follow the London Councils' Best Practise Guidance *The control of dust and emissions from construction and demolition*. We will also expect developers to sign up to the Considerate Constructors Scheme. Details of how these will be implemented should be provided in a Construction Management Plan. Please see below for further details on Construction Management Plans.

## Microclimate

26.8 Developments, especially when large, can alter the local climate. For example, a light coloured building that reflects heat will stay cool on the inside and the outside, whereas a dark building will absorb heat during the day to raise internal temperatures and slowly release this heat as the temperature cools, keeping the local air temperature warmer. Buildings can also affect the flow of air and cause wind tunnels. All developments should consider local topography and the local microclimate in their design. Developments large enough to alter the local climate will be required to submit a statement demonstrating how the design has considered local conditions. Detail of what is expected in such a statement can be found in the Camden Planning Guidance.

## Attenuation measures and Construction Management Plans

26.9 Most potential negative effects of a development can be designed out or prevented through mitigation measures. For example, appropriately located and insulated extraction equipment can prevent nuisance caused by strong odours and fumes. An air tight building with mechanical ventilation and good insulation can make living adjacent to railways and busy roads acceptable with regards to noise, vibration and internal air quality. We will require any attenuation measures to be identified prior to planning permission being granted and secured for the lifetime of the development.

26.10 Disturbance from development can also occur during the construction phase. Measures required to reduce the impact of demolition, excavation and construction works must be outlined in a Construction Management Plan. We will require Construction Management Plans to identify the potential impacts of the construction phase of the development and state how any potential negative impacts will be mitigated. Construction Management Plans may be sought for:

- major developments;
- basement developments;
- developments involving listed buildings or adjacent to listed buildings;
- developments that could affect wildlife;
- developments on sites with poor or limited access; and
- developments that could cause significant disturbance due to their location or the anticipated length of the, demolition, excavation or construction period.

For further details on construction management plans please refer to our Camden Planning Guidance supplementary. Please see policy DP27 for more on our approach to basements.

## Standards of accommodation

26.11 The size of a dwelling and its rooms, as well as its layout, will have an impact on the amenity of its occupiers. Residential standards and guidance are contained in our Camden Planning Guidance supplementary document. Policy DP6 outlines our approach to Lifetime Homes and further detail can be found in Camden Planning Guidance. Details on our approach to providing facilities for waste and for bicycle storage can also be found in Camden Planning Guidance. Details on our requirements for the provision of cycle parking can be found in DP18 – *Parking standards and limiting the availability of car parking*.

26.12 Outdoor amenity space provides an important resource for residents, which is particularly important in Camden given the borough's dense urban environment. It can include private provision such as gardens, courtyards and balconies, as well as communal gardens and roof terraces. The Council will expect the provision of gardens in appropriate developments, and particularly in schemes providing larger homes suitable for families. However, we recognise that in many parts of the borough this will not be realistic or appropriate. In these locations, the provision of alternative outdoor amenity space, for example, balconies, roof gardens or communal space will be expected. These amenity spaces should be designed to limit noise and disturbance of other occupiers and so not to unacceptably reduce the privacy of other occupiers and neighbours.

### Key evidence and references

- Air Quality Action Plan 2009-13
- Camden's Noise Strategy, 2002
- Planning Policy Guidance (PPG) 24: Planning and Noise
- The London Plan (consolidated with alterations since 2004); Mayor of London; 2008
- Cleaning London's Air: The Mayor's Air Quality Strategy (2002)
- Souder City – The Mayor's Ambient Noise Strategy; Mayor of London; 2004
- Institution of Lighting Engineers web-site, <http://www.ile.org.uk>

## DP28. Noise and vibration

- 28.1 Noise and vibration can have a major effect on amenity and health and therefore quality of life. Camden's high density and mixed-use nature means that disturbance from noise and vibration is a particularly important issue in the borough. Camden's Core Strategy recognises the importance of this issue for Camden's residents and policy DP28 contributes to implementing a number of Core Strategy policies, including CS5 – *Managing the impact of growth and development*, CS9 – *Achieving a successful Central London*, CS11 – *Promoting sustainable and efficient travel* and CS16 – *Improving Camden's health and well-being*.

### DP POLICY

#### DP28 – Noise and vibration

The Council will seek to ensure that noise and vibration is controlled and managed and will not grant planning permission for:

- a) development likely to generate noise pollution; or
- b) development sensitive to noise in locations with noise pollution, unless appropriate attenuation measures are provided.

Development that exceeds Camden's Noise and Vibration Thresholds will not be permitted.

The Council will only grant permission for plant or machinery if it can be operated without cause harm to amenity and does not exceed our noise thresholds.

The Council will seek to minimise the impact on local amenity from the demolition and construction phases of development. Where these phases are likely to cause harm, conditions and planning obligations may be used to minimise the impact.

- 28.2 The effect of noise and vibration can be minimised by separating uses sensitive to noise from development that generates noise and by taking measures to reduce any impact. Noise sensitive development includes housing, schools and hospitals as well as offices, workshops and open spaces, while noise is generated by rail, road and air traffic, industry, entertainment (e.g. nightclubs, restaurants and bars) and other uses.
- 28.3 The Council will only grant planning permission for development sensitive to noise in locations that experience noise pollution, and for development likely to generate noise pollution, if appropriate attenuation measures are taken, such as double-glazing. Planning permission will not be granted for development sensitive to noise in locations that have unacceptable levels of noise. Where uses sensitive to noise are proposed close to an existing source of noise or when development that generates noise is proposed, the Council will require an acoustic report to ensure compliance with PPG24: *Planning and noise*. A condition will be imposed to require that the plant and equipment which may be a source of noise pollution is kept working efficiently and within the required noise limits and time restrictions. Conditions may also be imposed to ensure that attenuation measures are kept in place and effective throughout the life of the development.
- 28.4 In assessing applications, we will have regard to the Noise and Vibration Thresholds, set out below. These represent an interpretation of the standards in PPG24 and include an evening period in addition to the day and night standards contained in the PPG, which provide a greater degree of control over noise and vibration during a period when noise is often an issue in the borough.

**Table A: Noise levels on residential sites adjoining railways and roads at which planning permission will not be granted**

Noise description and location of measurement	Period	Time	Sites adjoining railways	Sites adjoining roads
Noise at 1 metre external to a sensitive façade	Day	0700-1900	74 dB $L_{Aeq}$ 12h	72 dB $L_{Aeq}$ 12h
Noise at 1 metre external to a sensitive façade	Evening	1900-2300	74 dB $L_{Aeq}$ 4h	72 dB $L_{Aeq}$ 4h
Noise at 1 metre external to a sensitive façade	Night	2300-0700	66 dB $L_{Aeq}$ 8h	66 dB $L_{Aeq}$ 8h

**Table B: Noise levels on residential streets adjoining railways and roads at and above which attenuation measures will be required**

Noise description and location of measurement	Period	Time	Sites adjoining railways	Sites adjoining roads
Noise at 1 metre external to a sensitive façade	Day	0700-1900	65 dB $L_{Aeq}$ 12h	62 dB $L_{Aeq}$ 12h
Noise at 1 metre external to a sensitive façade	Evening	1900-2300	60 dB $L_{Aeq}$ 4h	57 dB $L_{Aeq}$ 4h
Noise at 1 metre external to a sensitive façade	Night	2300-0700	55 dB $L_{Aeq}$ 1h	52 dB $L_{Aeq}$ 1h
Individual noise events several times an hour	Night	2300-0700	>82 dB $L_{Amax}$ (S time weighting)	>82 dB $L_{AMAX}$ (S time weighting)

**Table C: Vibration levels on residential sites adjoining railways and roads at which planning permission will not be granted**

Vibration description and location of measurement	Period	Time	Vibration levels
Vibration inside critical areas such as a hospital operating theatre	Day, evening and night	0000-2400	0.1 VDV ms <sup>-1.75</sup>
Vibration inside dwellings	Day and evening	0700-2300	0.2 to 0.4 VDV ms <sup>-1.75</sup>
Vibration inside dwellings	Night	2300-0700	0.13 VDV ms <sup>-1.75</sup>
Vibration inside offices	Day, evening and night	0000-2400	0.4 VDV ms <sup>-1.75</sup>
Vibration inside workshops	Day, evening and night	0000-2400	0.8 VDV ms <sup>-1.75</sup>

Where dwellings may be affected by ground-borne regenerated noise internally from, for example, railways or underground trains within tunnels, noise levels within the rooms should not be greater than 35dB(A)<sub>max</sub>

**Table D: Noise levels from places of entertainment on adjoining residential sites at which planning permission will not be granted**

Noise description and measurement location	Period	Time	Sites adjoining places of entertainment
Noise at 1 metre external to a sensitive façade	Day and evening	0700-2300	$L_{Aeq}$ 5m shall not increase by more than 5dB*
Noise at 1 metre external to a sensitive façade	Night	2300-0700	$L_{Aeq}$ 5m shall not increase by more than 3dB*
Noise inside any living room of any noise sensitive premises, with the windows open or closed	Night	2300-0700	$L_{Aeq}$ 5m (in the 63Hz Octave band measured using the 'fast' time constant) should show no increase in dB*

\* As compared to the same measure, from the same position, and over a comparable period, with no entertainment taking place

**Table E: Noise levels from plant and machinery at which planning permission will not be granted**

Noise description and location of measurement	Period	Time	Noise level
Noise at 1 metre external to a sensitive façade	Day, evening and night	0000-2400	5dB(A) <LA90
Noise that has a distinguishable discrete continuous note (whine, hiss, screech, hum) at 1 metre external to a sensitive façade.	Day, evening and night	0000-2400	10dB(A) <LA90
Noise that has distinct impulses (bangs, clicks, clatters, thumps) at 1 metre external to a sensitive façade.	Day, evening and night	0000-2400	10dB(A) <LA90
Noise at 1 metre external to sensitive façade where LA90>60dB	Day, evening and night	0000-2400	55dBL $_{Aeq}$

#### Key evidence and references

- Camden's Noise Strategy, 2002
- The London Plan (Consolidated with Alterations since 2004), 2008
- Planning Policy Guidance 24: Planning and noise

## DP32. Air quality and Camden’s Clear Zone

- 32.1 The Core Strategy highlights the need to promote higher standards of air quality within the borough. It is recognised that parts of Camden have some of the poorest air quality levels in London and consequently the whole of the borough has been declared an Air Quality Management Area. The Council has produced an Air Quality Action Plan that identifies actions and mitigating measures necessary to improve air quality in the borough.
- 32.2 A key challenge therefore is to make our local environment better by reducing air pollution. This underpins many of the Core Strategy policies, including CS9 – *Achieving a successful Central London*, CS11 – *Promoting sustainable and efficient travel*, CS13 – *Tackling climate change through promoting higher environmental standards* and CS16 – *Improving Camden’s health and well-being*.
- 32.3 The designation of Central London as a Clear Zone region is a key way to reduce congestion and promote walking and cycling as a way of improving the borough’s air quality.

### DP POLICY

#### DP32 – Air quality and Camden’s Clear Zone

The Council will require air quality assessments where development could potentially cause significant harm to air quality. Mitigation measures will be expected in developments that are located in areas of poor air quality.

The Council will also only grant planning permission for development in the Clear Zone region that significantly increases travel demand where it considers that appropriate measures to minimise the transport impact of development are incorporated. We will use planning conditions and legal agreements to secure Clear Zone measures to avoid, remedy or mitigate the impacts of development schemes in the Central London Area.

#### Air Quality

- 32.4 The Council will take into account impact on air quality when assessing development proposals. Regard will be paid to Camden’s Air Quality Action Plan and to *Cleaning London’s Air: The Mayor’s Air Quality Strategy*. Where development could potentially cause significant harm to air quality, we require an air quality assessment. Where the assessment shows that a development would cause significant harm to air quality, planning permission will be refused unless mitigation measures are adopted to reduce the impact to acceptable levels. Further guidance on air quality and when assessments will be required is provided in the Council’s Camden Planning Guidance supplementary planning document.
- 32.5 Our growth areas of Euston, Kings Cross, Holborn, Tottenham Court Road and West Hampstead (see Core Strategy policy CS2) are located along busy roads and currently experience poor levels of air quality and disturbance from noise. Developments in these areas will need to be well protected against air and noise pollution to ensure they are suitable for occupation. Where mechanical ventilation is required due to poor environmental conditions we will expect developments to incorporate high standards of energy efficient design, for example ‘Passivhaus’ principles. Policy DP22 – *Promoting sustainable design and construction* gives more guidance on energy efficient design and Passivhaus. Our Camden Planning Guidance supplementary document gives more information on mitigating against poor air quality and Passivhaus principles.

32.6 Core Strategy policy CS13 promotes the use of renewable energy technologies to reduce carbon emissions and tackle climate change. The burning of biomass in a boiler is identified as a renewable energy resource in the Mayor's Energy Strategy. Boilers can burn solid biomass or liquid biofuels and are popular on high density sites with small footprints as their use can be the only way for development to reduce their carbon emissions by 20%. However, in central London there are air quality implications for the use of biomass as higher levels of nitrogen oxides (NOx) and particulates are released than conventional gas boilers or gas-fired community heating facilities. Given the existing poor air quality in Camden, the use of biomass as a renewable energy source will be the Council's least preferred option for the provision of renewable energy. We will expect developments to focus on energy efficiency and an efficient energy supply. Details on potential low carbon and renewable energy technologies can be found in the Camden Planning Guidance and also within policy DP22 – *Promoting sustainable design and construction*.

## Camden's Clear Zone

32.7 Camden has been a leading council in the development of policies and initiatives to reduce the impact of transport on the environment. We are the lead borough in the Clear Zone Partnership, which covers the Central London part of Camden, with the City of Westminster and the Corporation of London. The Clear Zone Partnership aims to reduce congestion, noise and air pollution; encourage a shift to walking, cycling and public transport; and improve the urban realm. It uses partnership working, innovative technologies and sustainable transport measures to achieve these aims. The Council will expect development schemes to contribute to Clear Zone measures where appropriate.

32.8 The objectives of the Clear Zone region are to:

- reduce congestion and pollution through piloting sustainable transport measures and innovative technologies;
- improve air quality;
- reduce noise pollution;
- improve accessibility and mobility for walking, cycling and public transport;
- improve our streets, places and open spaces;
- make it easier for people to find their way around through installing pedestrian and cycling signage systems;
- encourage cycling by promoting secure cycle stations and city bike hire schemes;
- promote car-free and traffic reduced areas and developments, complemented by car clubs;
- reduce the amount of through traffic;
- promote good management in development schemes through construction, servicing and waste management plans; and
- promote alternatively fuelled and low emission vehicles for freight distribution and servicing.

32.9 More detail on the Clear Zone and the types of measures we will promote within it, such as travel plans, car clubs, construction, servicing and waste management plans, pedestrian and cycle facilities, is set out in the Council's Camden Planning Guidance supplementary document.

### Key evidence and references

- Camden's Noise Strategy, 2002
- The London Plan (Consolidated with Alterations since 2004), 2008
- Planning Policy Guidance 24: Planning and noise
- Camden's Air Quality Action Plan
- Cleaning London's Air: The Mayor's Air Quality Strategy



