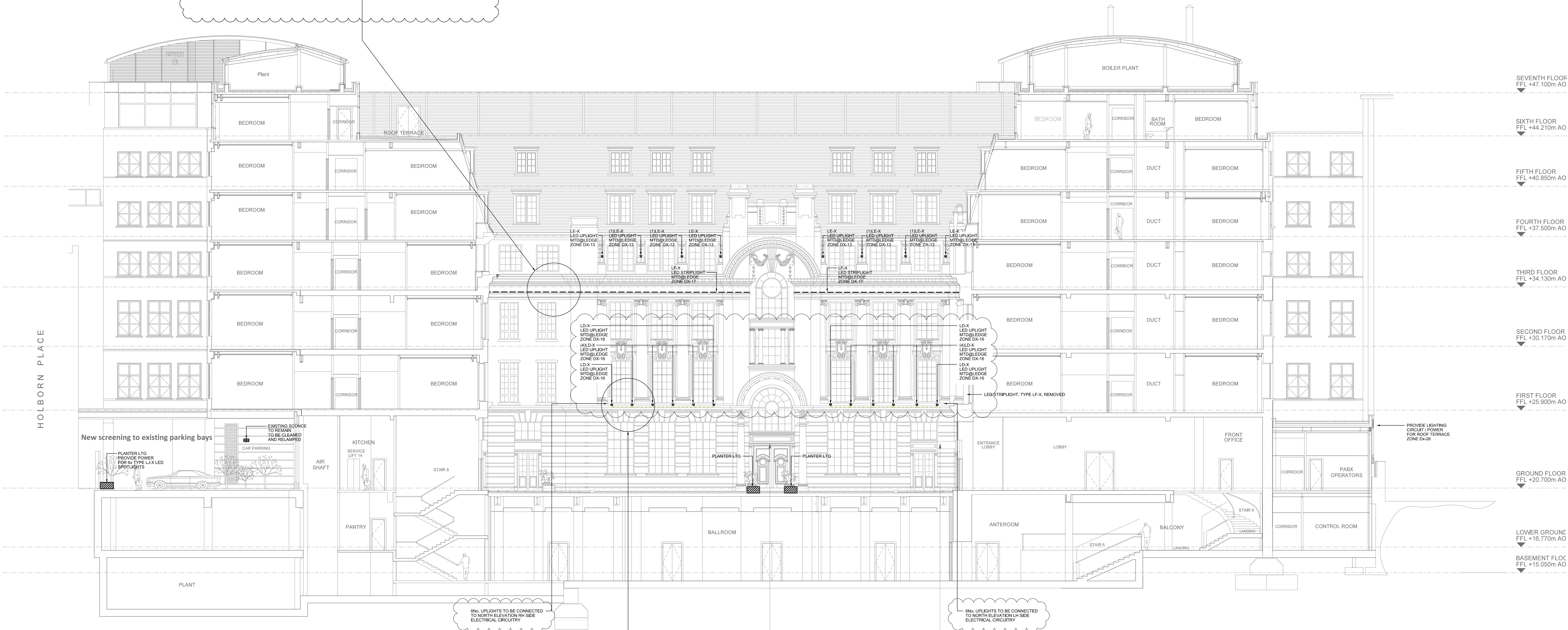




LEAD TAB FIXINGS FOR LED LIGHT AND CABLE



EXISTING LEAD TAB CABLE FIXINGS AND LIGHTING FITTING MOUNTING PLATE RE-USED



## BASE DRAWINGS

USED IN COMPLETION OF THIS DRG.

EPR : 2109-T-01-0524-ZDD REV. 02

### NOTES

1. WORK TO FIGURED DIMENSIONS ONLY.

C7	MAY 14	TYPICAL CABLE FIXING DETAIL (PHOTOS) ADDED	AS	MSW	DAW
C6	OCT 13	ADDITIONAL LD-X UPLIGHTS ADDED	ATK	MSW	DAW
C5	AUG 13	REVISED - ADDING CONTROL GROUPS	ATK	MSW	DAW
C4	JUN 13	REVISED - ADDING CONTROL GROUPS	KL	MSW	DAW
C3	MAY 13	REVISED FOLLOWING DESIGN REVIEW	XF	MSW	DAW
C2	APR 13	REVISED FOLLOWING MOCK UP REVIEW	XF	MSW	DAW
C1	AUG 12	CONTRACT ISSUE	XF	MSW	DAW
T1	APR 12	TENDER ISSUE	XF	MSW	DAW
Rev.	Date	Details	Mark	CHK'D	App

Status:

Architect:

EPR

Client:

HPI

Project:

CHANCERY COURT HOTEL

Title:

EXTERNAL LIGHTING COURTYARD SOUTH ELEVATION

Eng:	XF	CAD:	XF
Chkd:	mech sec ph	Appr:	DAW
Date:	APR. 12	Scale:	1:100

**AECOM**

AECOM House  
63-77 Victoria Street  
St Albans, Hertfordshire AL1 3ER  
www.aecom.com

T: +44 (0) 1727 53 9000  
F: +44 (0) 1727 53 9099

Drawing No: 60190918\_Ph2\_E674

Rev: C7

cm  
User: SANAMES