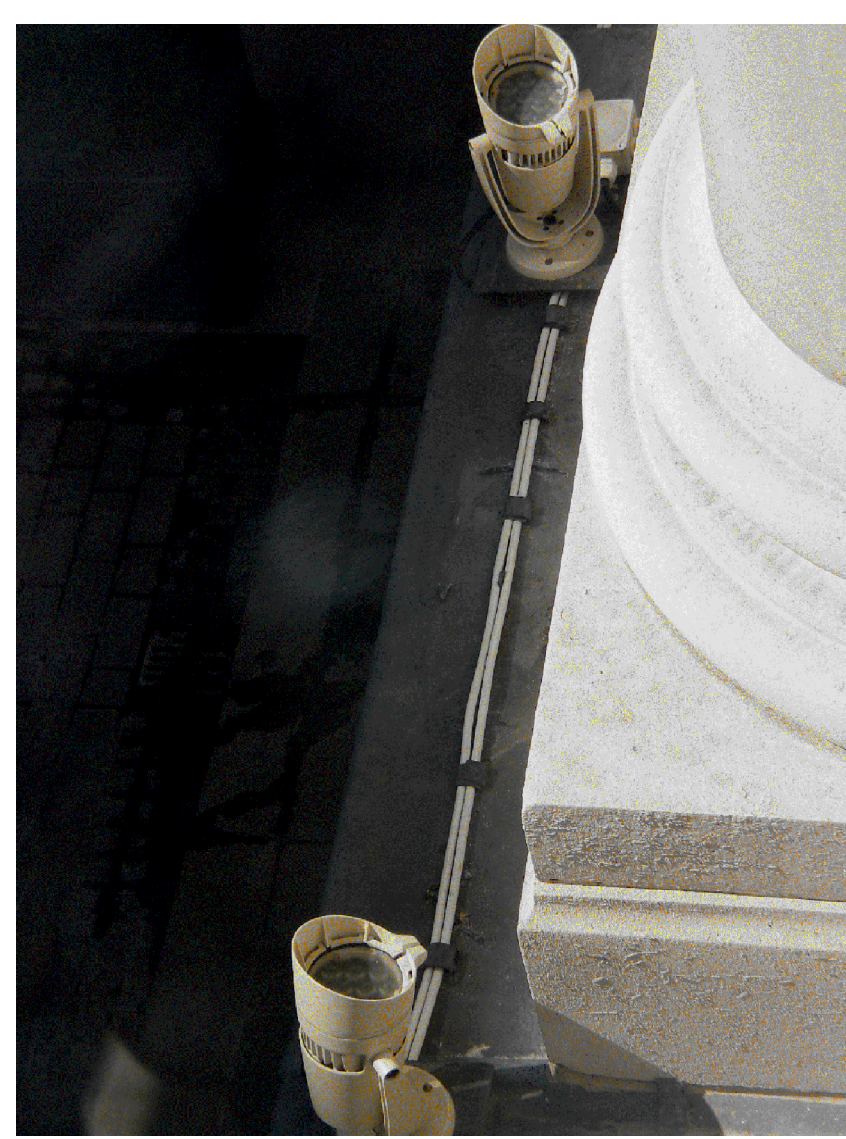




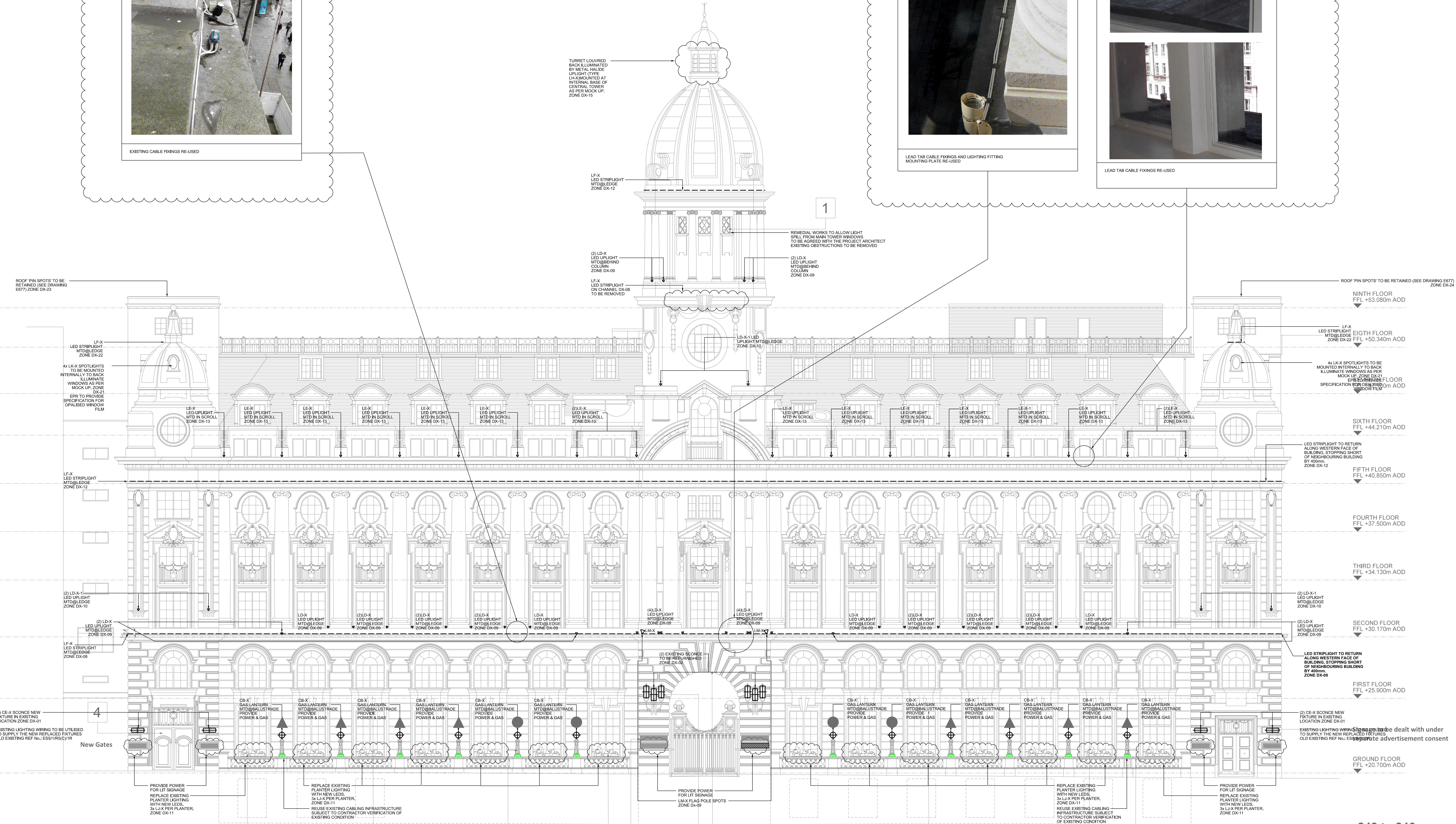
EXISTING CABLE FIXINGS RE-USED



LEAD TAB CABLE FIXINGS AND LIGHTING FITTING MOUNTING PLATE RE-USED



LEAD TAB CABLE FIXINGS RE-USED



BASE DRAWINGS  
USED IN COMPIATION OF THIS DRG:  
EPR : 2109-T-01-0421-2NO REV: 02

NOTES  
1. WORK TO FIGURED DIMENSIONS ONLY.

C7	MAY	TYPICAL CABLE FIXING	AS	MSW	DAW
C6	AUG	REVISD FOLLOWING	ATK	MSW	DAW
C5	JUL	REVISD FOLLOWING	ATK	MSW	DAW
C4	JUN	REVISD - ANODING	KL	MSW	DAW
C3	MAY	REVISD FOLLOWING	XF	MSW	DAW
C2	APR	REVISD FOLLOWING	XF	MSW	DAW
C1	AUG	CONTRACT ISSUE	XF	MSW	DAW
T1	APR	TENDER ISSUE	XF	MSW	DAW
Rev	Date	Details	Mark	CHKD	App
Status:					
Architect:					
Client:					
Project:					
Title:					
Eng: XF					
CAD: XF					
CHKD: mech sec ph					
Appd: DAW					
Date: APR. 12					
Scale: 1:100					
AECOM					
AECOM House 63-77 Victoria Street St Albans, Hertfordshire AL1 3ER T: +44 (0) 1727 53 9000 F: +44 (0) 1727 53 9999 www.aecom.com					
Drawing No: 60190918_Ph2_E671					
Rev: C7					
cm					
User: SANAMES					

ORN

242 to 246  
HIGH HOLBORN

High level lighting to soffit of  
archway to be converted to gas lamp