

# VISUALISATIONS



DIAGRAMMATICAL FRONT FACADE RENDER

The architectural composition of the building is emphasized through highlighting the main horizontal lines and the elements at the top of the building to provide an increased height perception of the building by drawing the view all the way up to the top.

The architectural composition of the building is emphasized through highlighting the main horizontal lines and the elements at the top of the building to provide an increased height perception of the building by drawing the view all the way up to the top.

Low power LED striplight to emphasize horizontal lines and curvature of tower/dome

Vertical features are highlighted to structure the facade and clarify the architectural design.

At the pedestrian level, gas lanterns on top of the stone balustrade posts create a welcoming atmosphere and provide a sense of heritage and place. This is supported through low-level planter lighting associated with the ground floor windows.

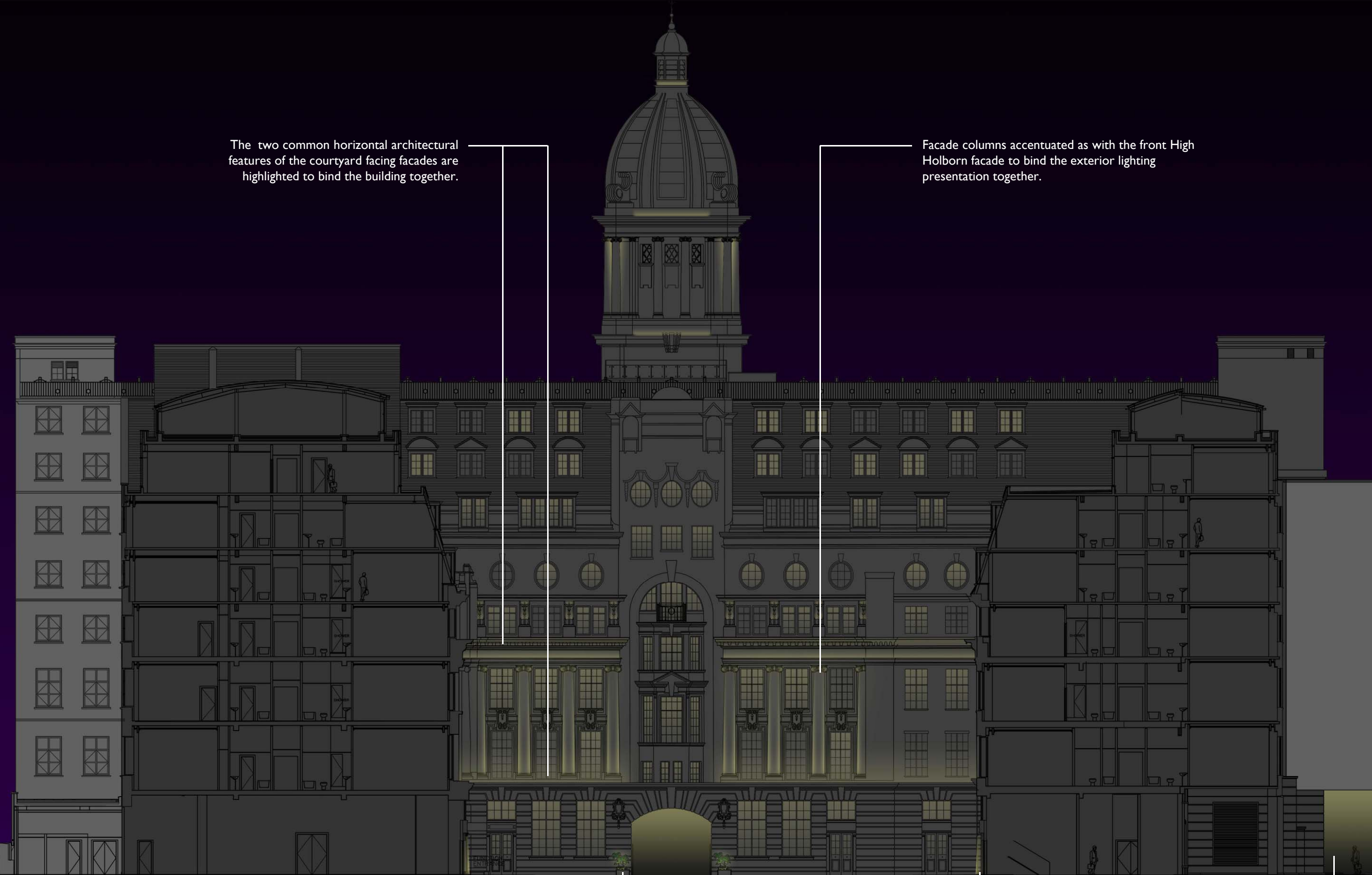
The main entry portal is highlighted through a set of new decorative period sconces in existing location and lit signage. New flag-pole lighting in the existing location increases the properties visibility along High Holborn.

Vertical architectural features are emphasized through narrow beam uplights on the to provide further definition and clarification of the architectural composition.

The side entrances are flanked by new decorative fittings referencing the style of the sconces at the main portal.

The two common horizontal architectural features of the courtyard facing facades are highlighted to bind the building together.

Facade columns accentuated as with the front High Holborn facade to bind the exterior lighting presentation together.



Subtle uplight integrated into planting beds to illuminate foliage and softly define the perimeter of the courtyard.

Existing uplighters in the corner to be replaced to help define the perimeter of the space

Underpass and service area to utilise existing wall lanterns that will be refurbished as required.

The two common horizontal architectural features of the courtyard facing facades are highlighted to bind the building together.

Facade columns accentuated as with the front High Holborn facade to bind the exterior lighting presentation together.



New planter and signage lighting to the rear drive planter, providing focus and direction.

Underpass and service area to utilise existing wall lanterns that will be refurbished as required.

Subtle uplight integrated into planting beds to illuminate foliage and softly define the perimeter of the courtyard.

Existing uplighters in the corner to be replaced to help define the perimeter of the space



The facade of the lobby entrance is articulated with 3no custom feature sconces over the new entry canopies. The glowing portals of the main lobby entrances as well as the articulated signage create a sense of warmth and welcome.



The main passageway is viewed as a series of 'chambers' with a lit pathway guiding through to the courtyard.

The space is visually heightened through horizontal uplighting at the level of the heritage rooms and through replacing the existing pendant with a signature decorative chandelier.

The initial 'chamber' is framed by existing uplights as well as through highlight to the texture and material of the main portal.

The middle 'chamber' is toned down to aide the view through to the end of the passage and the courtyard/building beyond.

The end 'chamber' the portal and gates as well as the statue niches are highlighted with uplights to give definition to the space.

Underpass and service area to utilise existing wall lanterns that will be refurbished as required.



PHOTO MANIPULATION RENDER – HIGH HOLBORN FACADE