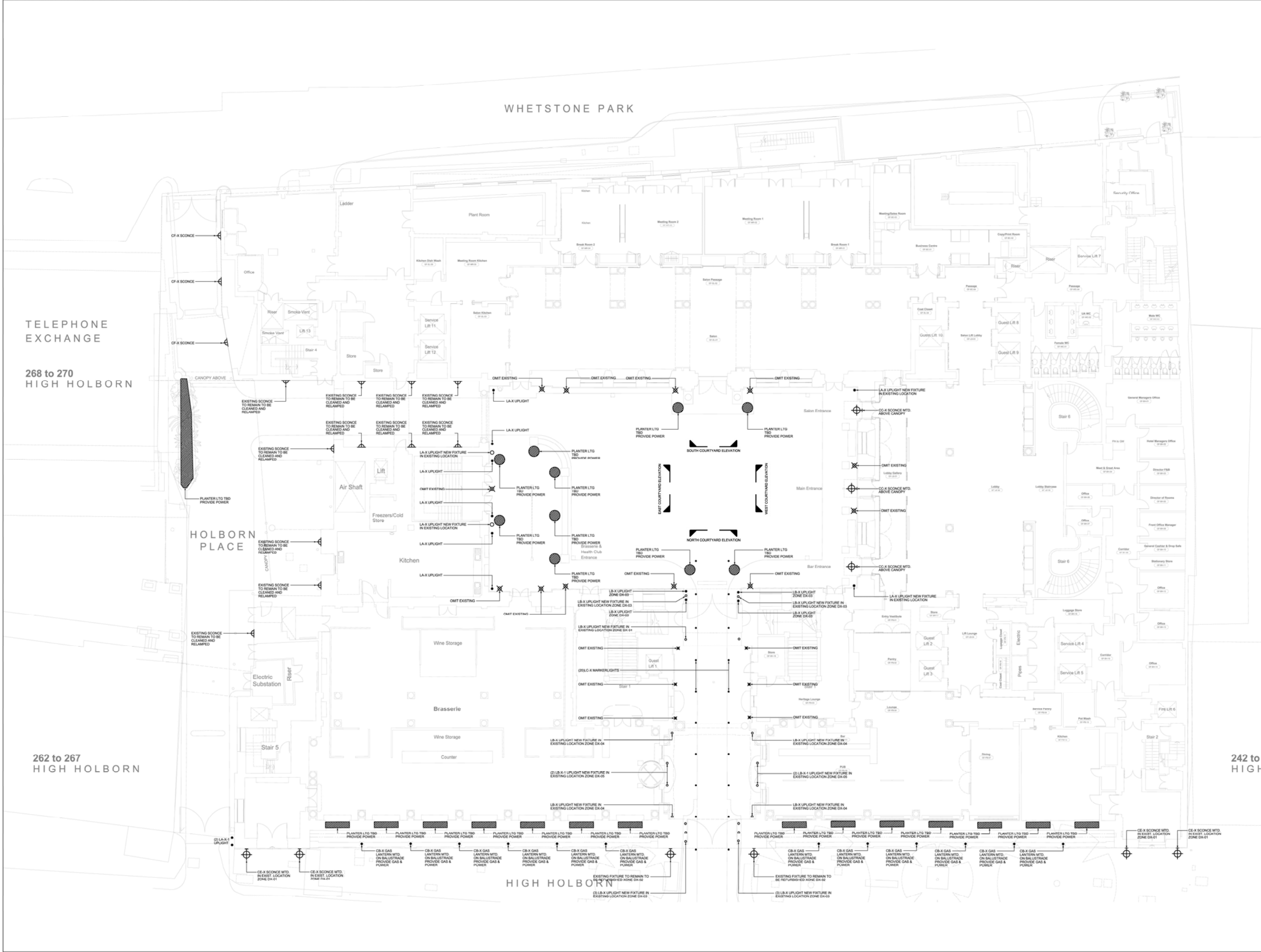
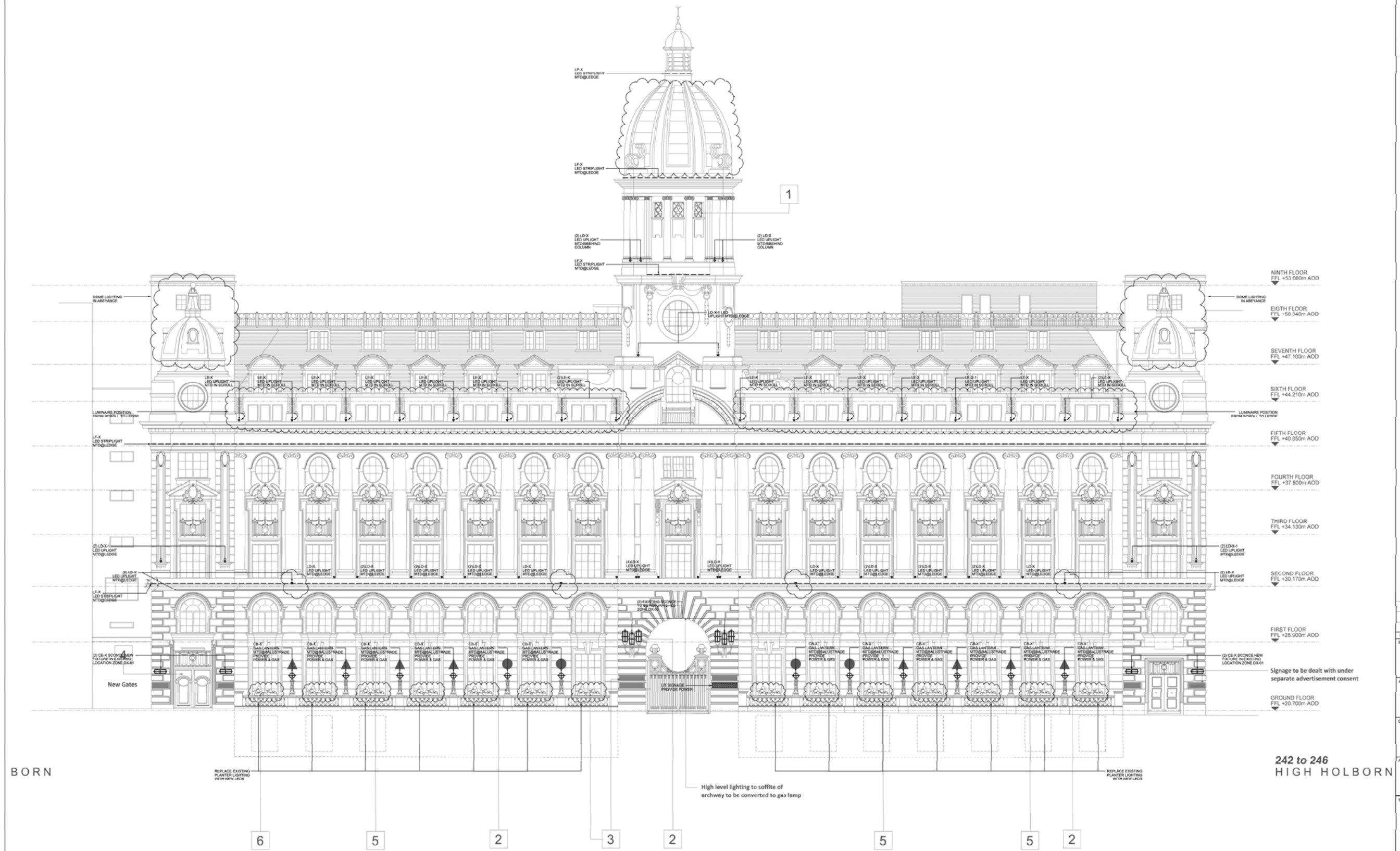


PROPOSED INSTALLATION



BASE DRAWINGS									
USED IN COMPIATION OF THIS DRG									
NOTES									
1. WORK TO FIGURED DIMENSIONS ONLY.									

GROUND LEVEL LIGHTING PLAN



2009-12-29 7:51:04 AM 2009-12-29 10:02:04 AM

1. WORK TO FIGURED DIMENSIONS ONLY.

C2	MAR '13	CONTRACT ISSUE	XF	MSW	DAW
C1	AUG '12	CONTRACT ISSUE	XF	MSW	DAW
T3	APR '12	TENDER ISSUE	XF	MSW	DAW
Rev	Date	Details	Made	Chk'd	App'd

CONTRACT
DRAWING

EPR

HPI

CHANCERY COURT
HOTEL

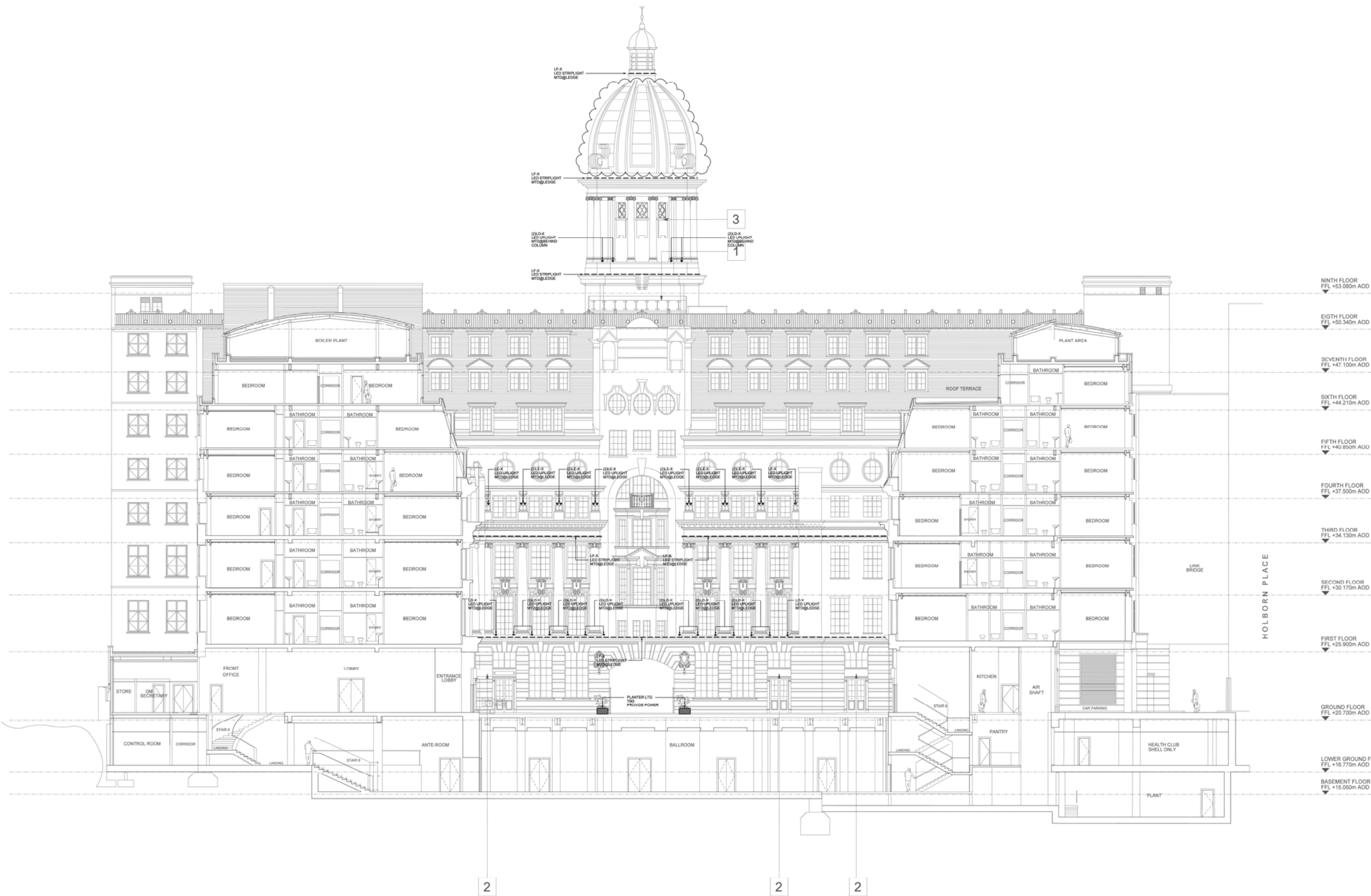
EXTERNAL LIGHTING
HIGH HOLBORN
ELEVATION

Eng:	XF			CAD:	XF
Disc'd:	mech	elec	ph	App'd:	DAW
		MSW			
Date:	APR 12			Scale:	1:100

AECOM

AECOM House 53-77 Victoria Street St Albans, Hertfordshire AL1 3ER Drawing No: 60190918_Ph2_E671		T: +44 (0) 1727 53 5000 F: +44 (0) 1727 53 5099 www.aecom.com
		Rev: C2

									A0
SANAMES									



BASE DRAWINGS

USED IN COMPIATION OF THIS DRG

SPR: 0109 Y 01 0000 000 000 000

NOTES

1. WORK TO FIGURED DIMENSIONS ONLY.

CD	MARK	CONTRACT ISSUE	XF	MSR	DATE
C1	AUG 12	CONTRACT ISSUE	XF	MSR	DATE
T1	APR 12	TENDER ISSUE	XF	MSR	DATE
Rev	Date	Details	Mark	Chk'd	App'd

CONTRACT DRAWING

Architect

EPR

Client

HPI

Project

CHANCERY COURT HOTEL

Title

EXTERNAL LIGHTING COURTYARD NORTH ELEVATION

Eng	XF	CAD	XF
Chk'd	MSR	App'd	DAW
Date	APR 12	Scale	1:100

AECOM

AECOM House
60-77 Victoria Street
St Albans, Hertfordshire AL1 3ER
www.aecom.com

T: +44 (0) 1727 53 5000
F: +44 (0) 1727 53 5000
www.aecom.com

Drawing No.

60190918_Ph2_E672

Rev.

C2

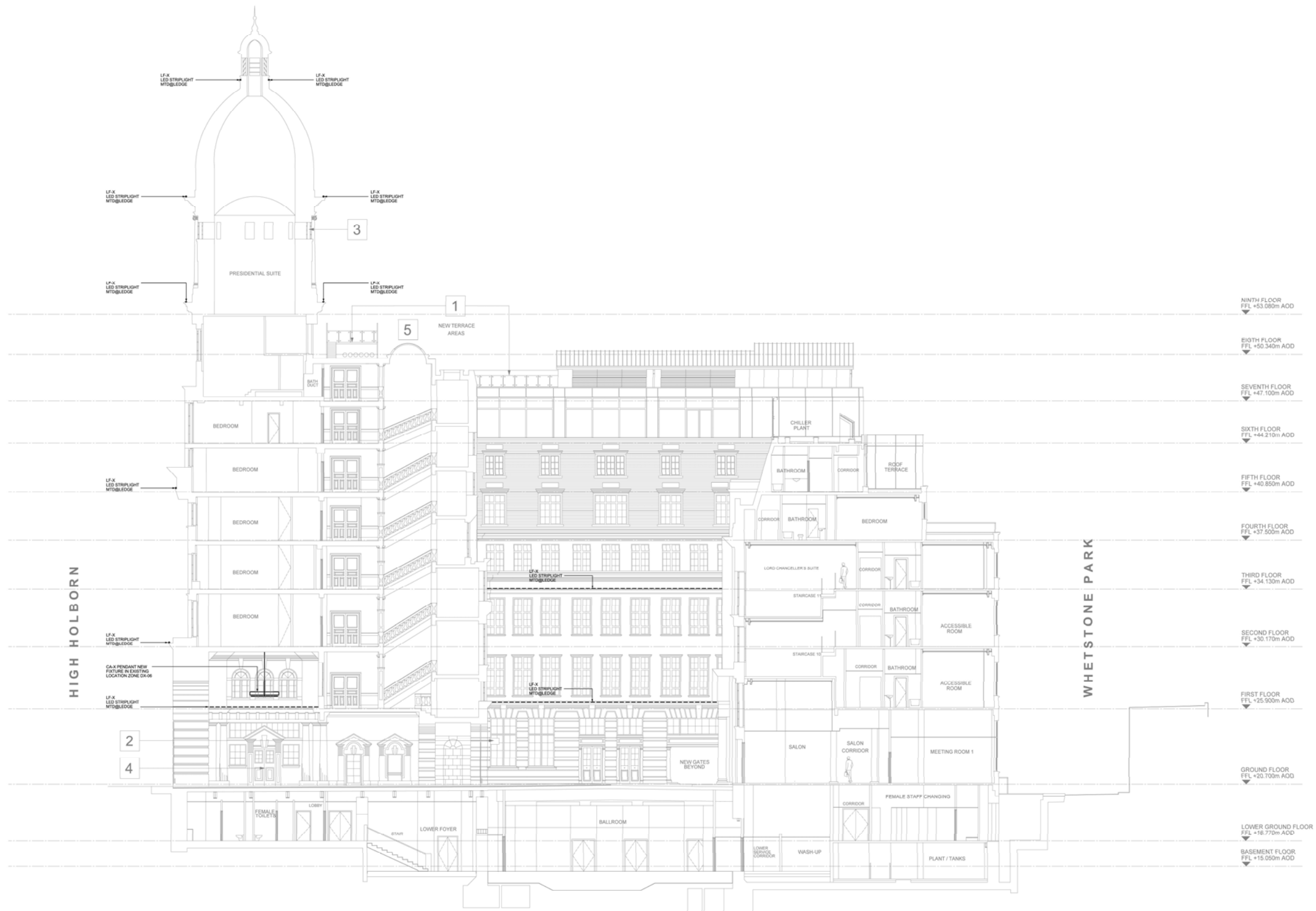
CD

User

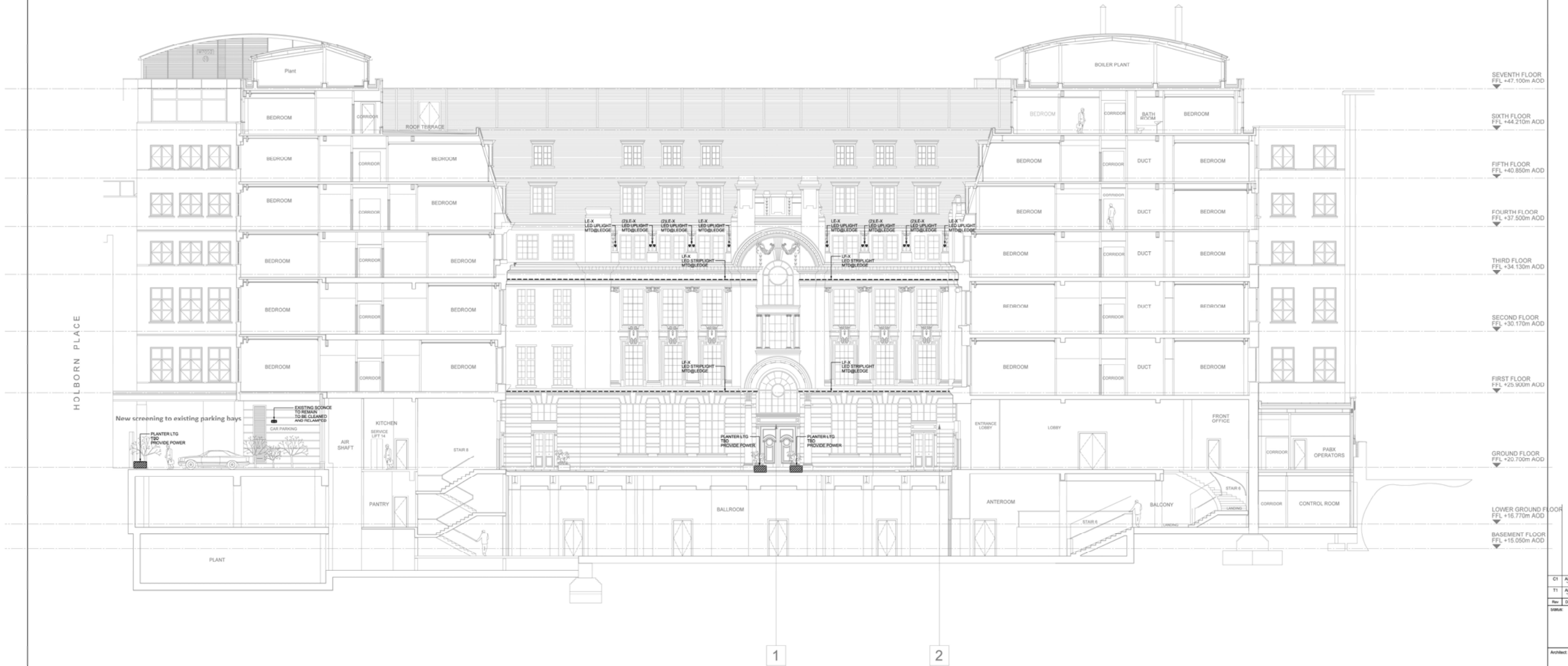
SANAMES

AD

INTERNAL COURTYARD – NORTH ELEVATION LIGHTING PLAN



BASE DRAWINGS USED IN COMPIATION OF THIS DRG EPR: 2109 T 01 0021 2A1 REV: 02									
NOTES 1. WORK TO FIGURED DIMENSIONS ONLY.									
</									



BASE DRAWINGS

USED IN COMPIATION OF THIS DRG

EPR - 2109 Y 01 004 200 REV. 02

NOTES

1. WORK TO FIGURED DIMENSIONS ONLY.

C1 AUG 10 CONTRACT ISSUE XF MSH DAW

T1 APR 12 TENDER ISSUE XF MSH DAW

RevDateDetailsMarkChk'dApp'd

CONTRACT DRAWING

Architect: EPR

Client: HPI

Project: CHANCERY COURT HOTEL

Title: EXTERNAL LIGHTING COURTYARD SOUTH ELEVATION

EngXF

CADXF

Chk'dMSH

App'dDAW

DateAPR 12

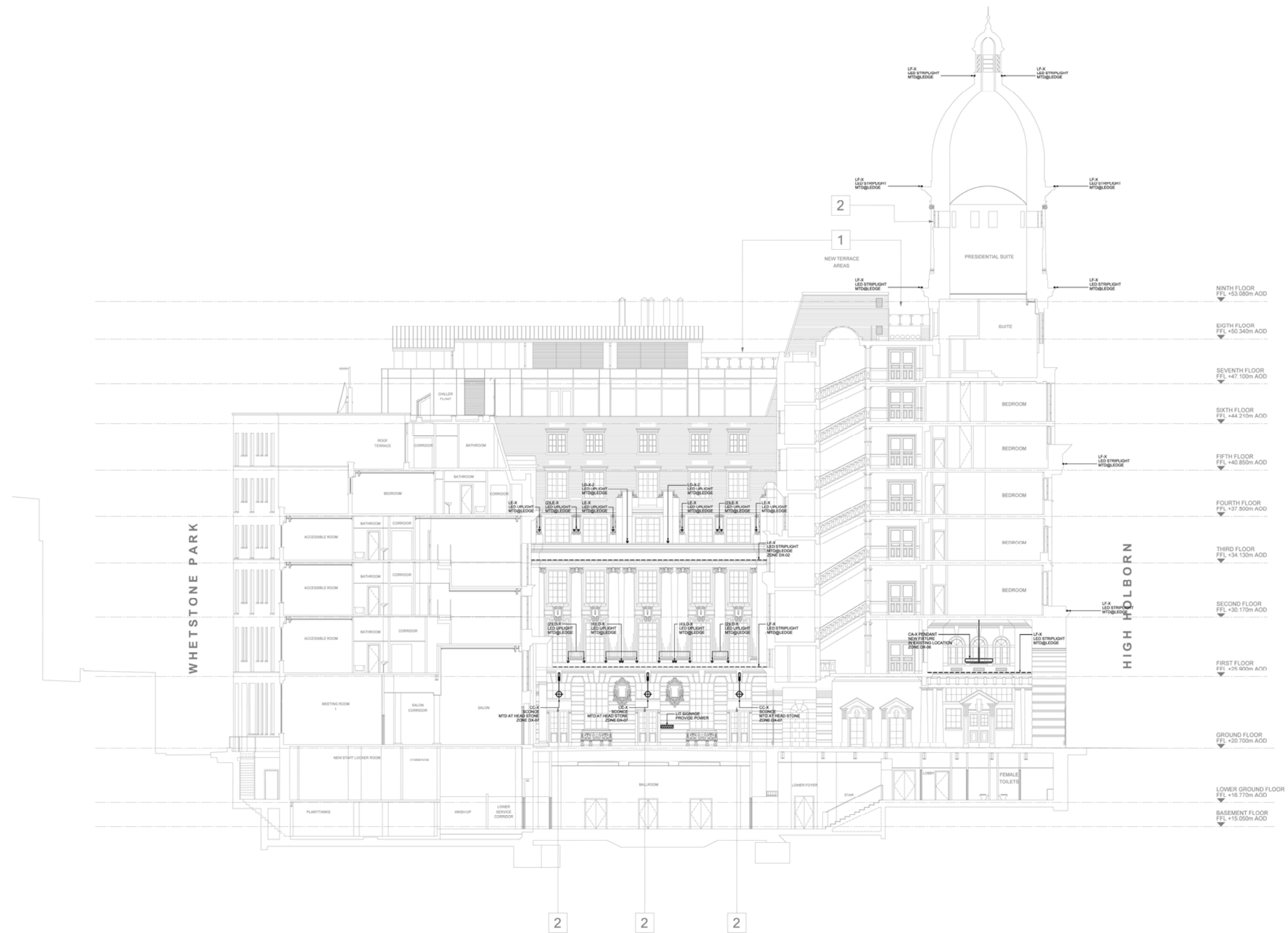
Scale1:100

AECOM

AECOM House T: +44 (0) 1727 53 5000 F: +44 (0) 1727 53 5000 www.aecom.com

Drawing No: 60190918_Ph2_E674 Rev: C1

cmmm



C1	AUG '12	CONTRACT ISSUE	XF	MSW
T1	APR '12	TENDER ISSUE	XF	MSW

CONTRACT
DRAWING

Architect:

EPR

Client:

HPI

Project: **CHANCERY COURT
HOTEL**

EXTERNAL LIGHTING
COURTYARD
WEST ELEVATION

Eng: XF		CAD: XF	
Chg'd:	mech	elec	plb
	MSW		App'd: DAW
Date: APR 12		Scale: 1:100	

AECOM House
65-77 Victoria Street
St Albans, Hertfordshire AL1 1ER
T: +44 (0) 1727 531
F: +44 (0) 1727 531
www.aecom.com

Drawing No:
60190918_Ph2_E675

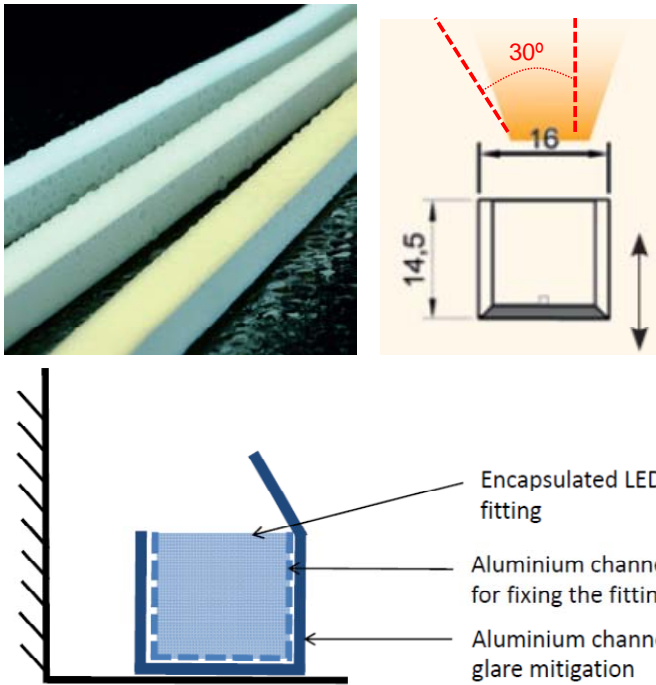
[illegible]

Proposed Luminaires



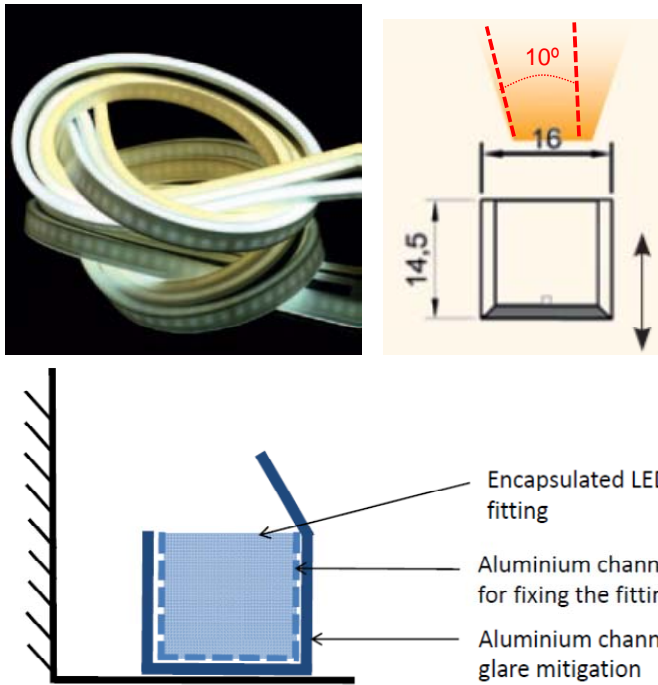
Type(s): LD-X, LD-X-I, LD-X-2
LED spotlight with integral dimmable driver and narrow beam. **CUSTOM RAL COLOUR TO MATCH STONEWORK.**

Used for: Front and Courtyard facade column uplighting



Type(s): LF-X
Encapsulated LED striplight with homogenous diffuser, remote dimmable driver and bespoke baffle detail. 30° distribution. Mounting channel to baffle view of LEDs and focus light onto building.

Used for: Front and Courtyard horizontal ledges



Type(s): LF-X-I
Flexible encapsulated LED striplight with homogenous diffuser, remote dimmable driver and bespoke baffle detail. 10° distribution. Mounting channel to baffle view of LEDs and focus light onto curvature of dome.

Used for: Tower curving ledges



Type(s): CB-X
Gas lantern mounted on cast iron pedestal along High Holborn balustrade with fishtail burner for visible flame, low light output.

Used for: High Holborn balustrade



Type(s): LE-X
Surface mounted LED marker light with low output, remote dimmable driver, and opal lens.

Used for: Front and Courtyard facade scroll details



Type(s): LB-X, LB-X-I
In-ground halogen uplight with integral transformer and lamp shield.

Used for: Uplight within entrance passageway



Type(s): LA-X
In-ground LED uplight with integral driver, high output LEDs, and narrow flood optic.

Used for: Internal Courtyard accent illumination



Type(s): LC-X
In-ground LED/metal halide marker light with sideward light emission

Used for: Internal Courtyard pedestrian circulation delineation