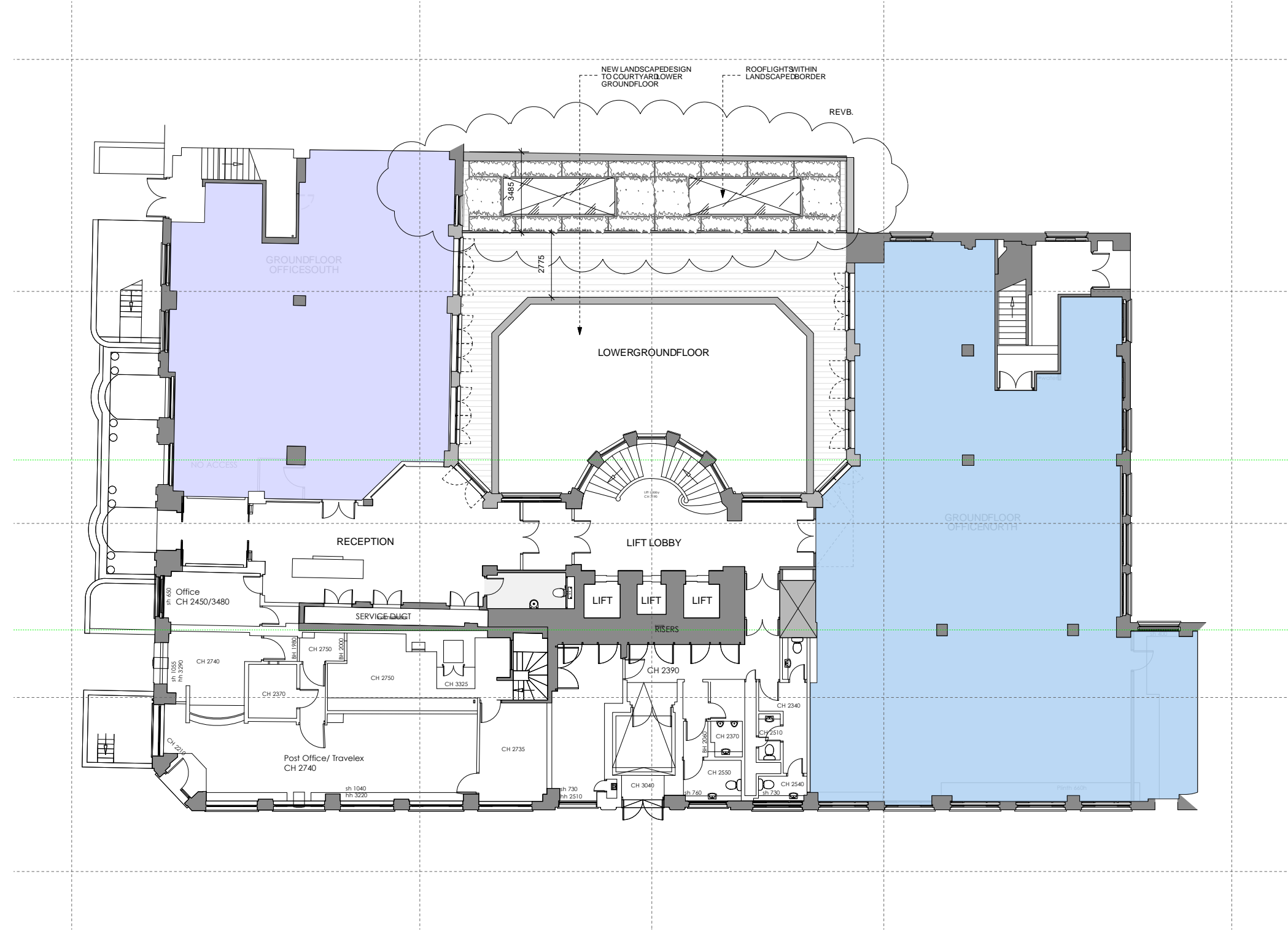


GENERAL NOTES:  
 Do not scale from this drawing.  
 Check drawing on receipt and immediately report any discrepancies to the Architect.  
 Verify all dimensions and levels on site prior to construction.  
 The contents of this drawing are Stiff + Trevillion Architects LLP copyright and shall not be re-used without their written permission.

No.	Date	Revision Notes
1	11/12/13	Amended Entrance layout + Added Door to office
2	30/04/14	Increased planting to terrace at ground floor level



PRELIMINARY

**Stiff + Trevillion**

Stiff + Trevillion Architects Ltd  
 16 Woodfield Road  
 London W9 2BE  
 T +44(0)208960 5550  
 F +44(0)208969 9888  
 mail@stiffandtrevillion.com  
 www.stiffandtrevillion.com

Project RUSSELS SQUARE HOUSE  
 LONDON

Drawing PROPOSED (with link)  
 GROUND FLOOR

Project No	Drawing No	Revision
3396	120	B
Scale 1:100 @ A1 1:200 @ A3	Date SEPT 2013	Revised