

16 Brewhouse
Yard Clerkenwell
London
EC1V 4LJ
United Kingdom

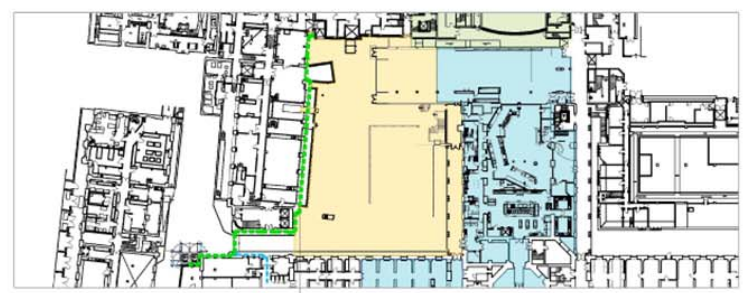


PROJECT TITLE
**UCL – WILKIN'S NORTH TERRACE,
TEMPORARY NITROGEN STORE**

DRAWING TITLE
**TEMPORARY, RELOCATED NITROGEN
STORE.
BWIC/MEPH CONNECTIONS OVERVIEW**

SCALE:
N.T.S
25/06/14

Project No: 2P005828
DRAWING NUMBER: MSK_160414A
REVISION: C



LOCATION PLAN

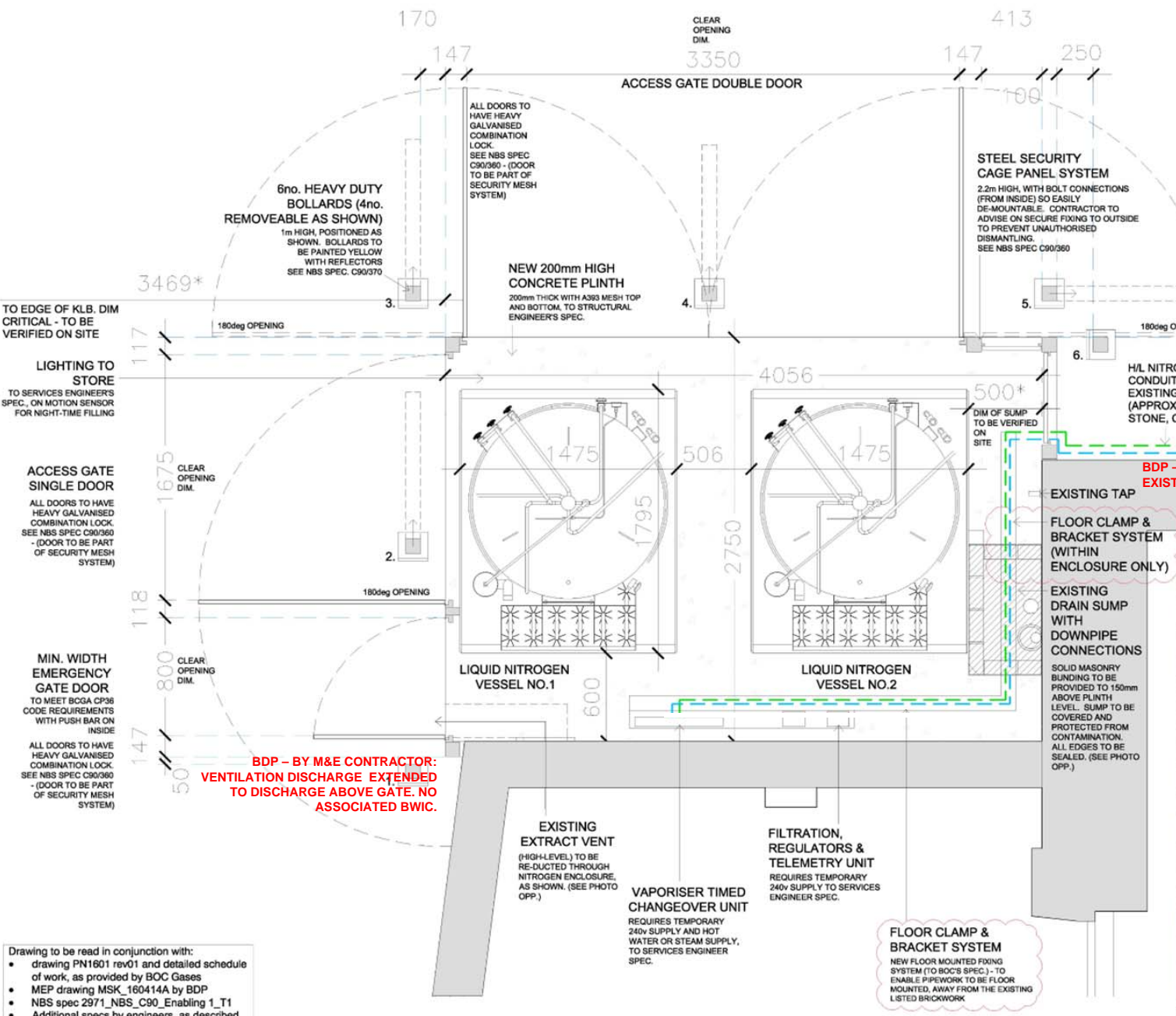
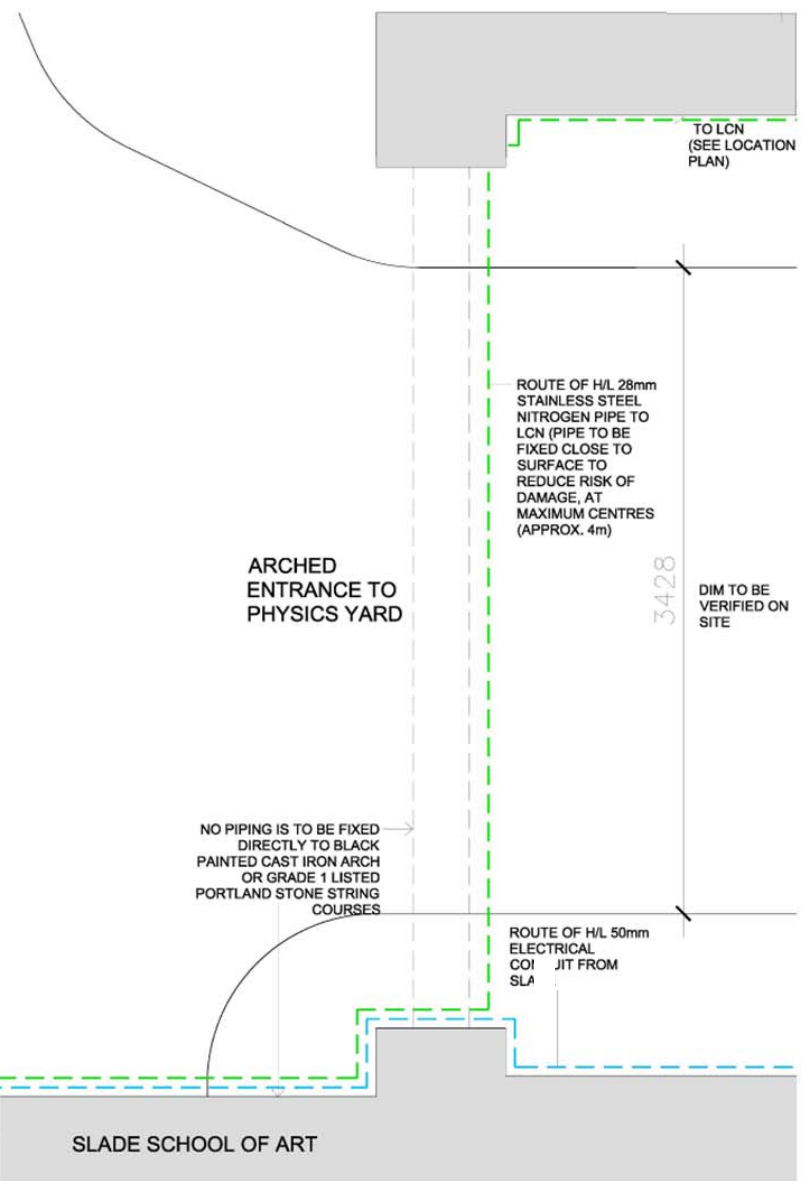
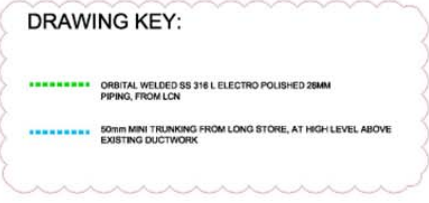
- Wilkins Terrace Boundary
- Wilkins Refectory Boundary
- Bloomsbury Theatre refurb. boundary

ROUTE OF HIGH-LEVEL STAINLESS STEEL PIPEWORK, BACK TO LCN. PIPE TO BE FIXED TO BRICKWORK ONLY ABOVE LINE OF PORTLAND STONE (SEE PHOTOS AND DRAWING A/559 FOR DETAILS)

BDP – THE NITROGEN PIPEWORK CHANGES PART OF BOC WORKS.



ROUTE OF HIGH-LEVEL STAINLESS STEEL PIPEWORK, BACK TO LCN. PIPE TO BE FIXED TO BRICKWORK ONLY ABOVE LINE OF PORTLAND STONE (SEE PHOTOS). NO FIXINGS TO PORTLAND STONE FACADE. FIXINGS TO BE AT MAXIMUM CENTRES (APPROX. 4m) - SEE DRAWING A/559 FOR DETAILS.



Drawing to be read in conjunction with:

- drawing PN1601 rev01 and detailed schedule of work, as provided by BOC Gases
- MEP drawing MSK_160414A by BDP
- NBS spec 2971_NBS_C90_Enabling_1_T1
- Additional specs by engineers, as described below



standard notes

- Do not scale this drawing.
- All dimensions must be checked on site and any discrepancies verified with the architect.
- Unless shown otherwise, all dimensions are to structural surfaces.

THIS IS NOT A CONSTRUCTION DRAWING, IT IS UNSUITABLE FOR THE PURPOSE OF CONSTRUCTION AND MUST ON NO ACCOUNT BE USED AS SUCH.

drawing notes

(a) This drawing describes the design intent for the purposes of defining the Employer's Requirements. It is not a detailed design or construction drawing and responsibility for undertaking the design and ensuring compliance with the building regulations and planning conditions is the Contractor's. This drawing is to be read in conjunction with the specification and consultant's information.

(b) Read in conjunction with architect's detail drawings, room layouts and specifications.

(c) For general arrangement and demolition refer to L-series drawings, for details refer to A-series drawings, for schedules refer to S-series drawings and documents.

(d) Refer to structural engineer spec. for details of plinth, below ground drainage and any footings.

(e) Refer to services engineer spec. for details of power, lighting, public health and ventilation details.

Route of pipework to be verified with BOC and Parsons Brinckerhoff prior to fixing.

Proposal for bunding and sealing of existing sump drain to be provided for approval prior to commencement of works.

All works to existing listed fabric to be carefully undertaken, minimising damage.

revisions

T1	27.03.14	Draft Builderswork
BR'	03.04.14	Building Regulations (1st issue)
T2	16.04.14	For Tender
T3	06.06.14	For Tender - size of enclosure revised
T4	24.06.14	For LBC and Tender information - updated with removal of water supply to store

Making good of any damage caused to the building by the works after work is completed.

Reconstruction of the building or any parts of it following the proposed works, using the original materials as far as possible (alternatives to be approved prior to installation).

ALL SITE DIMS TO BE CHECKED PRIOR TO INSTALLATION.

Wilkins Terrace UCL

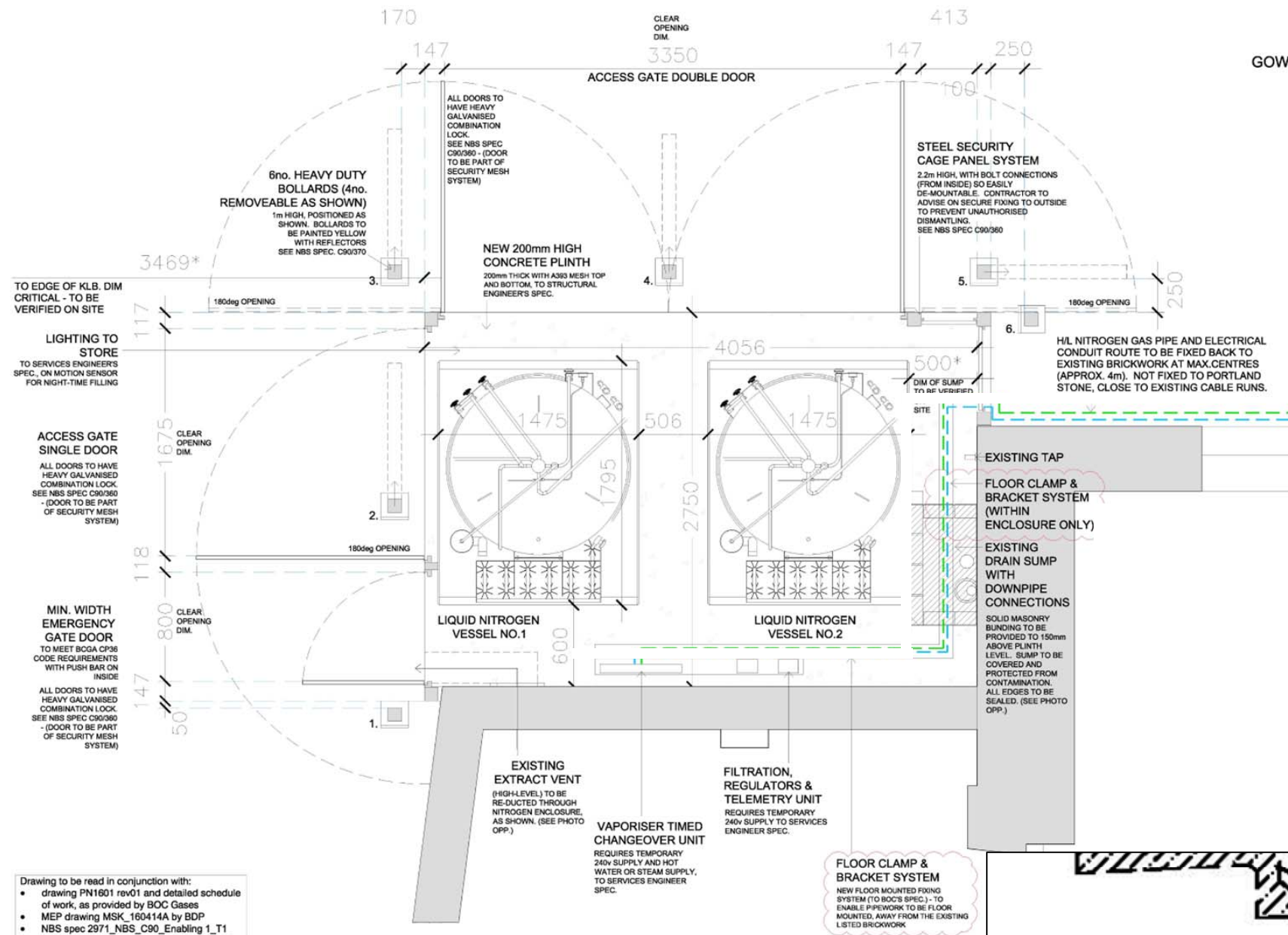
date 27.03.2014 client UCL

scale 1:20@A1_1:40@A3 drawing Enabling Works: Temporary Nitrogen Store

drawn EM checked FH drawing number 2971_L_500 rev T4

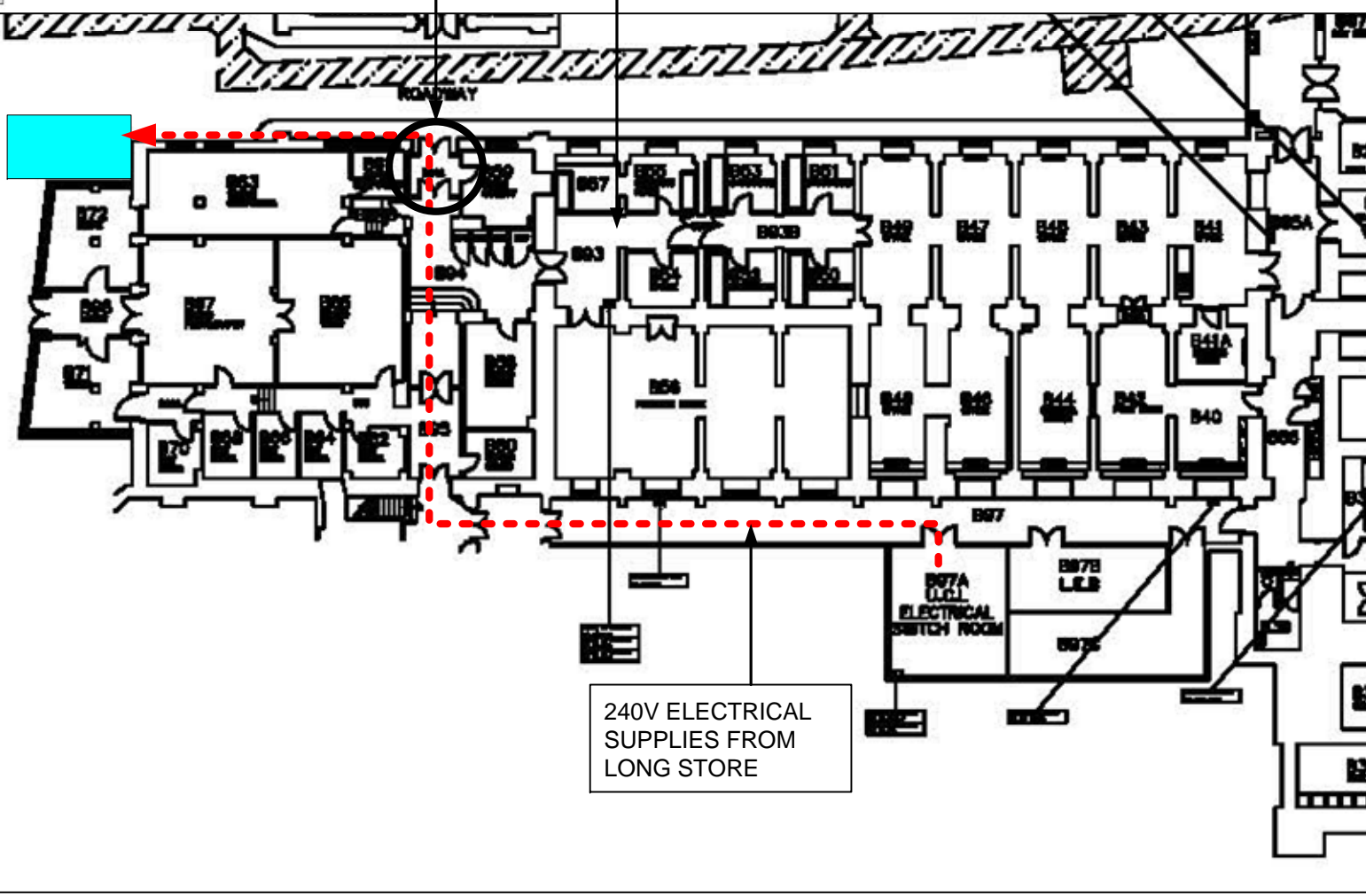
Levitt Bernstein
1 Kingsland Passage
London
E8 2BB
t: 020 7275 7676
f: 020 7275 8348
w: levittbernstein.co.uk
e: post@levittbernstein.co.uk
Levitt Bernstein

REV.A	DRAWING UPDATED	16/05/14
16 Brevhouse Yard Clerkenwell London EC1V 4LJ United Kingdom		BDP.
PROJECT TITLE UCL – WILKIN'S NORTH TERRACE, TEMPORARY NITROGEN STORE		
DRAWING TITLE TEMPORARY, RELOCATED NITROGEN STORE. BWIC/MEPH CONNECTIONS		SCALE: N.T.S 26/06/14
Project No: P2005828	DRAWING NUMBER: MSK_160414B	REVISION: C



ELECTRICAL SERVICES TO THE TEMPORARY NITROGEN STORE. FIXED ALONGSIDE EXISTING SERVICES MOUNTED ON EXTERNAL ELEVATION. NO SUPPORTS TO BE FIXED ONTO LISTED STONE FACADE.

BWIC/TEMPORARY OPENING ABOVE DOOR, APPROX. 150mm DEEP x 300mm WIDE



240V ELECTRICAL SUPPLIES FROM LONG STORE

- ELECTRICAL REQUIREMENT:**
- LIGHTING TO BE AS EXISTING.
 - PROVIDE A TEMPORARY 230V SUPPLY FOR INSTALLATION WORKS.
 - PROVIDE A 230V/110V, 2A, 1ph ELECTRICAL SUPPLY FOR TELEMETRY UNIT.
 - 230/110V, 2A, 1 PH, ELECTRICAL SUPPLY FOR THE VAPORISER TIMED CHANGE-OVER PANEL.
 - ALL SUPPLIES TO BE RUN IN CABLE TRAY OR CONDUIT AND TERMINATED IN THE BOC PANEL.
 - ALL PLINTH INTERCONNECTING WIRING INCLUDING TERMINATIONS, CABLE RUNS AND CABLE TRAY AND/OR TRUNKING, INCLUDING BETWEEN THE VAPORISER TIMED CHANGE-OVER PANEL AND THE CHANGE-OVER VALVES.
 - PROVIDE PERSONNEL FOR ALL ASSOCIATED ELECTRICAL ISOLATION, REMOVAL, COMPLETION OF TERMINATIONS, COMMISSIONING AND APPROPRIATE ELECTRICAL SUPPLY FROM/TO BOC EQUIPMENT.

Drawing to be read in conjunction with:

- drawing PN1601 rev01 and detailed schedule of work, as provided by BOC Gases
- MEP drawing MSK_160414A by BDP
- NBS spec 2971_NBS_C90_Enabling 1_T1
- Additional specs by engineers, as described below