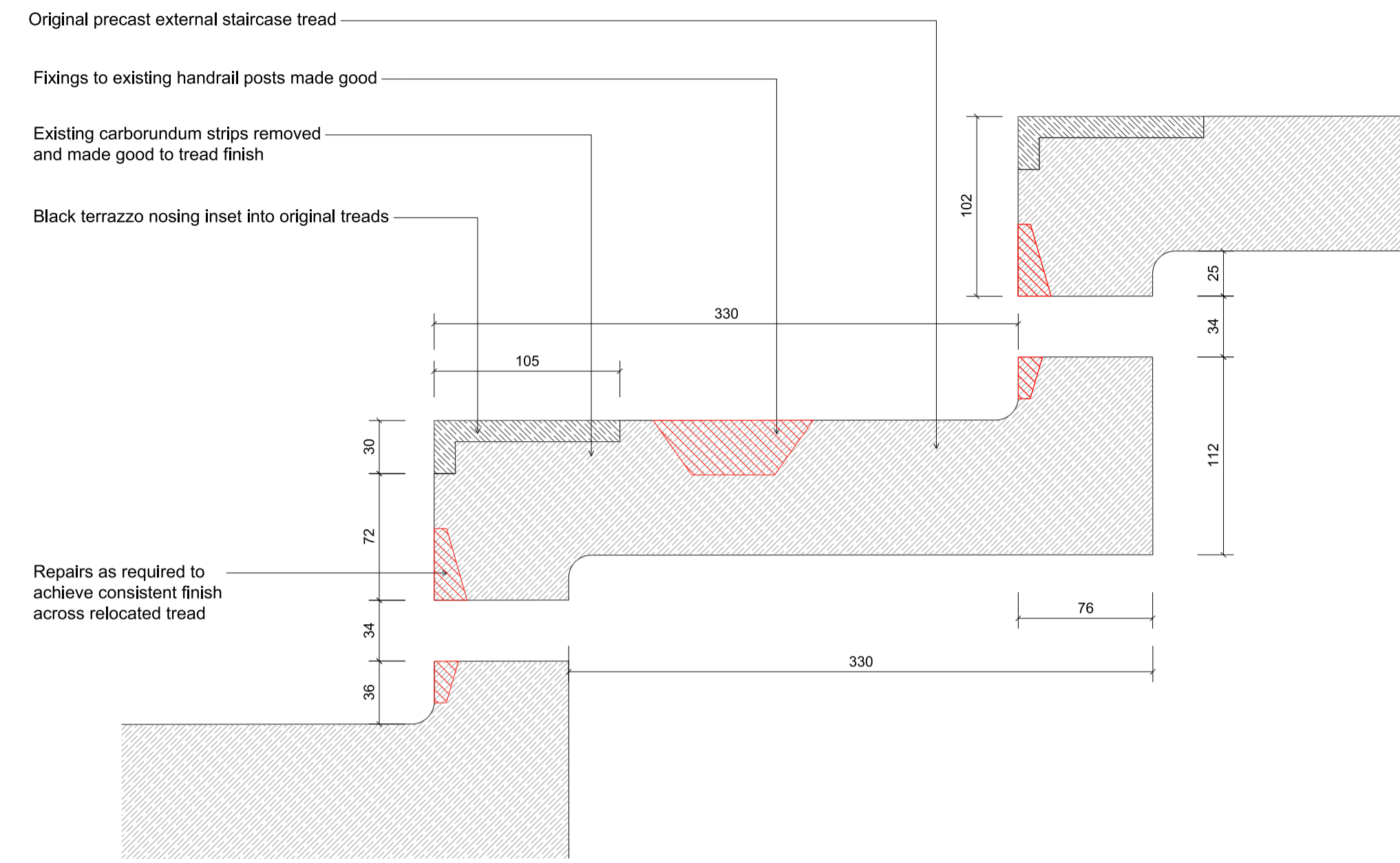





1 WESTERN EXTERNAL STAIRCASE 1:25
SCOPE OF REFURBISHMENT

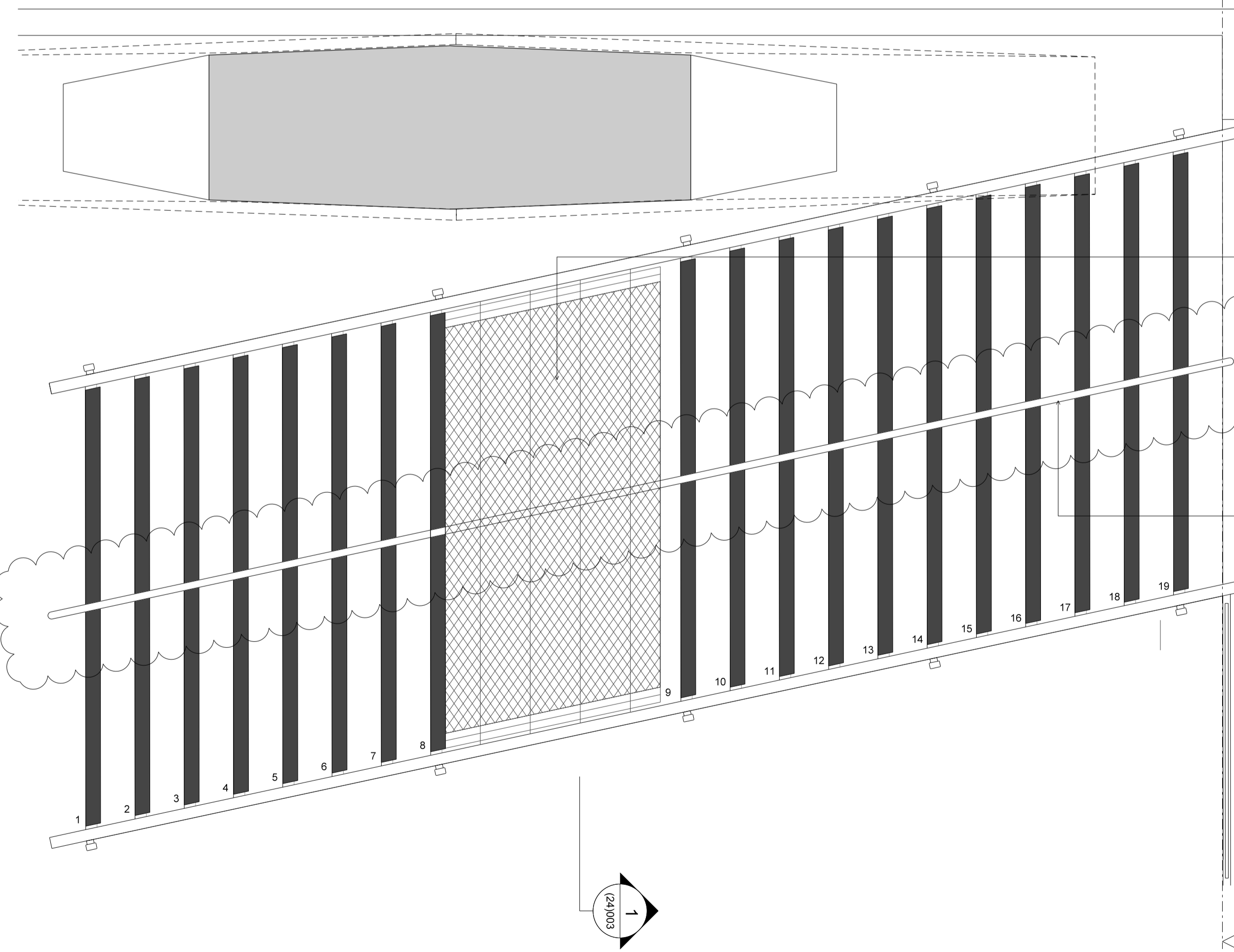


2 WESTERN EXTERNAL STAIRCASE 1:2
SCOPE OF REFURBISHMENT

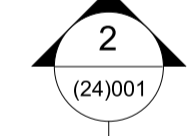
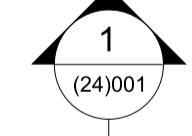
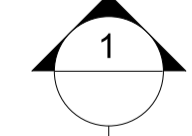
Notes

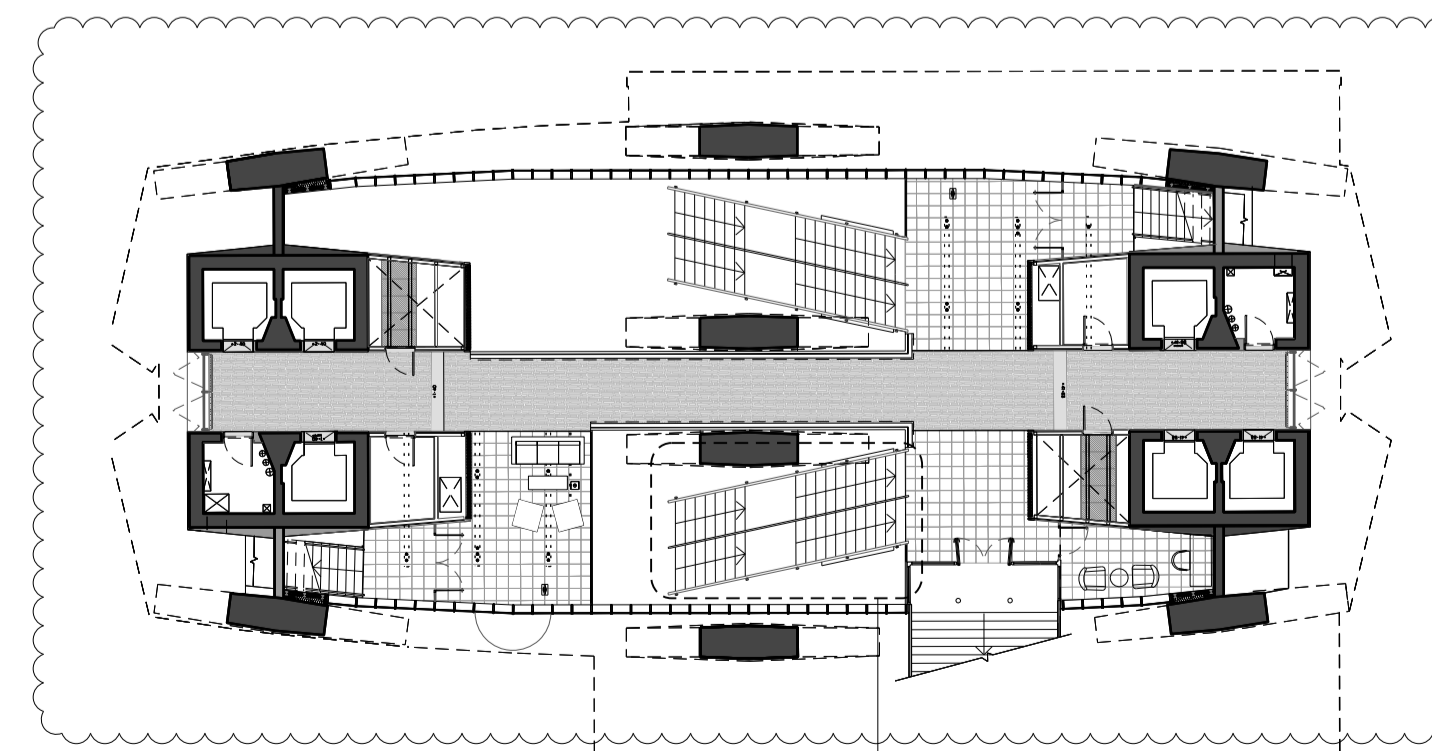
-  REPAIR TO EXISTING TREADS
-  NEW TREADS TO MATCH FINISH AND PROFILE OF ORIGINAL
-  RELOCATED REFURBISHED ORIGINAL TREADS

RELOCATED EXTERNAL STAIR



3 WESTERN EXTERNAL STAIRCASE 1:25
PROPOSED PLAN

-  2 (24)001
-  1 (24)001
-  1



3 WESTERN EXTERNAL STAIRCASE 1:200
KEY DEMOLITION PLAN

B	31.03.14	Symbology updated	NT	AS
A	16.12.13	Central handrail added	NT	AS
-	11.12.13	Stage E	NT	AS

Rev Date Reason By Ckd

CONRAN+ PARTNERS
Architects Designers

LONDON OFFICE
Conran Building,
22 Shad Thames,
London SE1 2YU
Telephone +44 (0) 20 7403 8899
Email cp@conran.com

Project: Centre Point
Client: Almacantar
Drawing title: WESTERN EXTERNAL STAIRCASE
RELOCATION TO EAST GROUND FLOOR
Scale 1: 25@A1 Date: DEC 2013 Drawn by: NT
Project number: 2332 Drawing No: (24)211 Rev: B
Status: STAGE E Checked by: AS