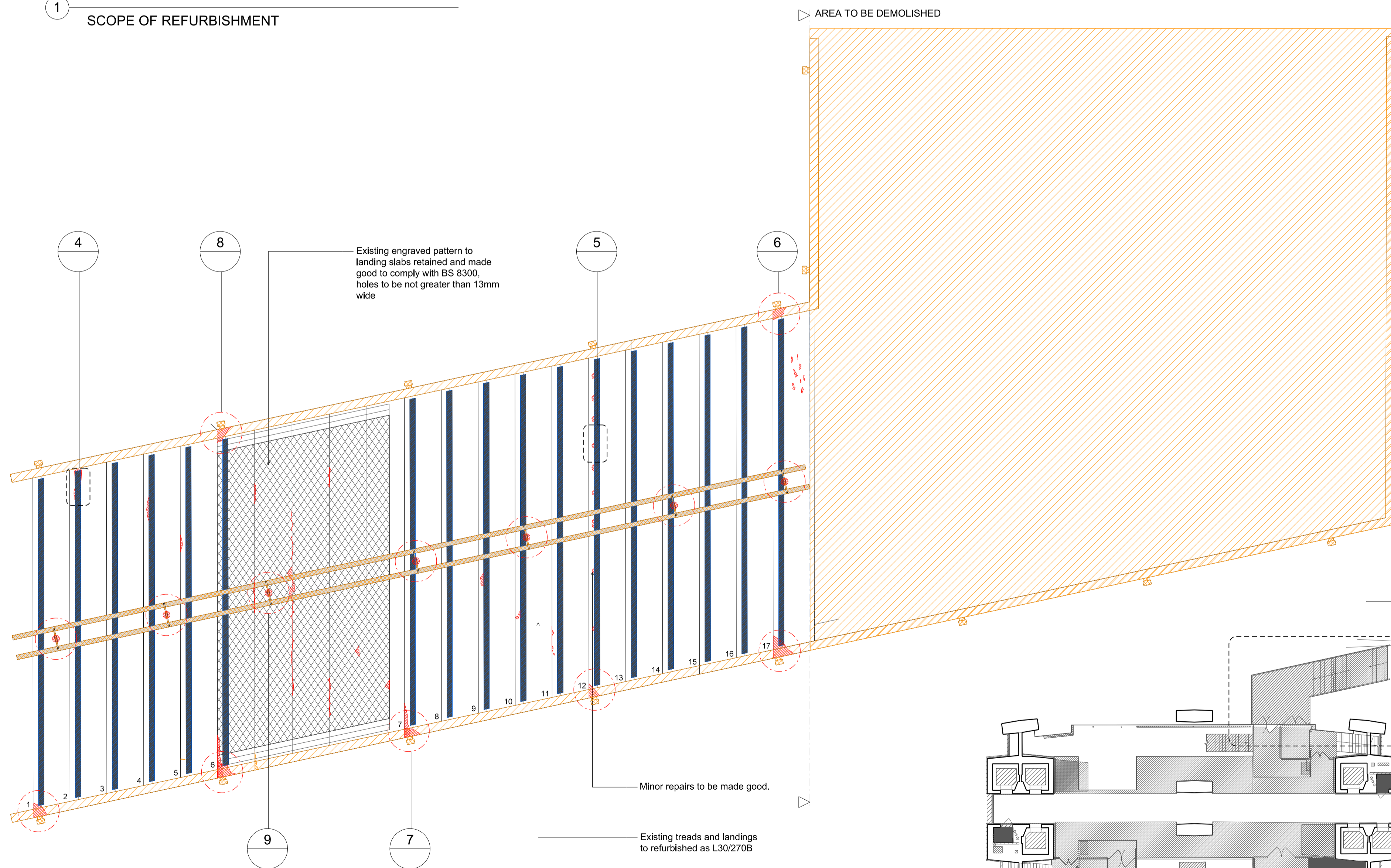
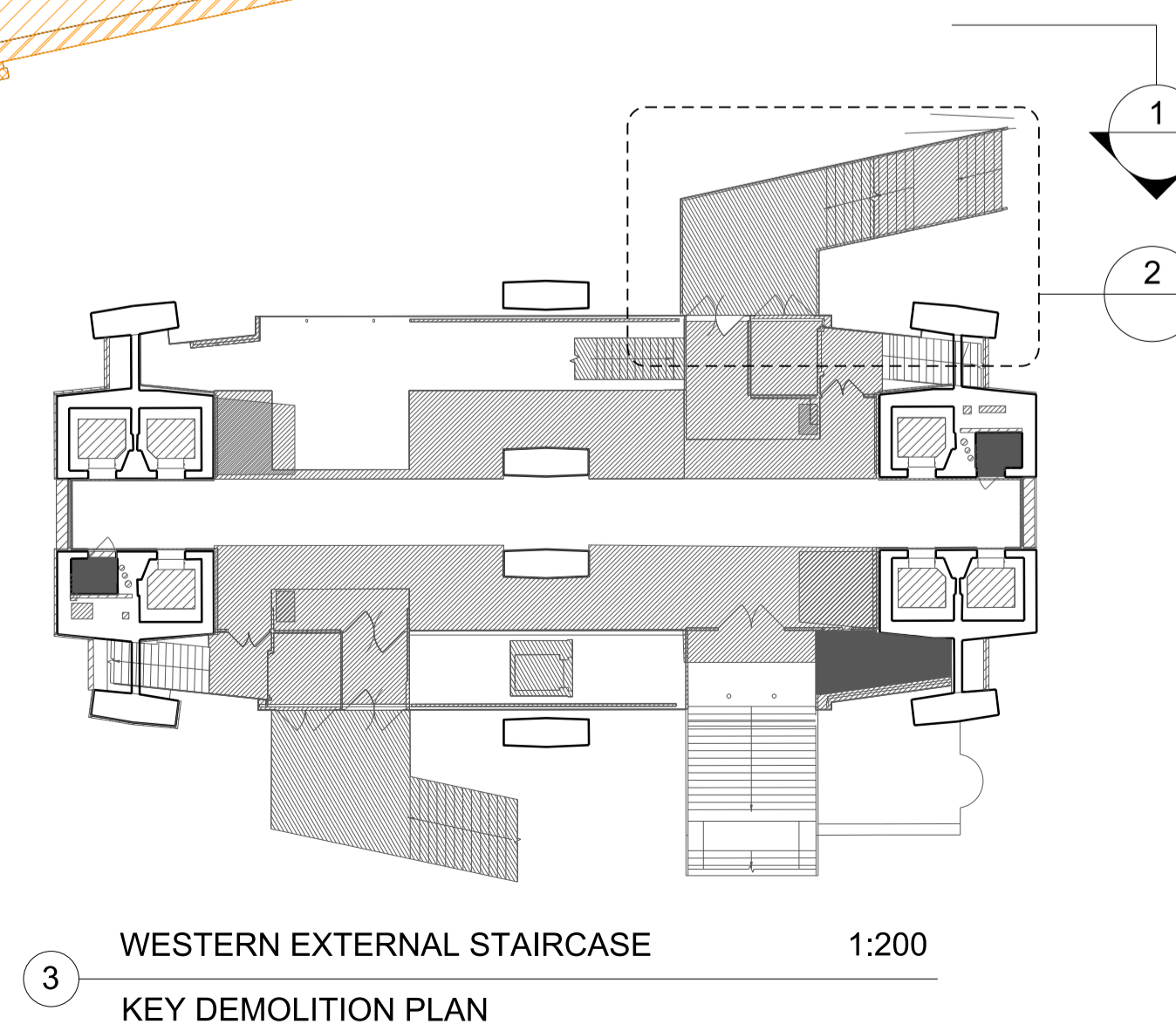


1 WESTERN EXTERNAL STAIRCASE  
SCOPE OF REFURBISHMENT 1:25



1 WESTERN EXTERNAL STAIRCASE  
SCOPE OF REFURBISHMENT 1:25



3 WESTERN EXTERNAL STAIRCASE  
KEY DEMOLITION PLAN 1:200



4 WESTERN EXTERNAL STAIRCASE  
NOSING STRIP



5 WESTERN EXTERNAL STAIRCASE  
RUST STAINING



6 WESTERN EXTERNAL STAIRCASE  
EXISTING REPAIRS



7 WESTERN EXTERNAL STAIRCASE  
DAMAGED TREAD EDGES



8 WESTERN EXTERNAL STAIRCASE  
DAMAGED TREAD CORNERS



9 WESTERN EXTERNAL STAIRCASE  
HANDRAIL POST FIXING

Notes

- REPAIR TO EXISTING TREADS
- AREA OF SIGNIFICANT REPAIR
- REMOVAL AND MAKING GOOD OF EXISTING NON-ORIGINAL NOSING STRIPS
- REMOVAL OF BALUSTRADES, POSTS AND MAKING GOOD OF FIXING POINTS
- GLAZED BALUSTRADE TO BE REMOVED, FIXINGS TO BE RETAINED
- AREA TO BE DEMOLISHED

Rev	Date	Reason	By	Ckd
-	11.12.13	Stage E	NT	AS

**CONRAN+ PARTNERS**  
Architects Designers

LONDON OFFICE  
Conran Building,  
22 Shad Thames,  
London SE1 2YU  
Telephone +44 (0) 20 7403 8899  
Email cp@conran.com

Project: Centre Point  
Client: Almacantar  
Drawing title: WESTERN EXTERNAL STAIRCASE  
SCOPE OF REFURBISHMENT  
Scale 1: 25@A1 Date: DEC 2013 Drawn by: NT  
Project number: 2332 Drawing No: (24)210 Rev: -  
Status: STAGE E Checked by: AS