

*73 Charlotte Street,
Fitzrovia
London*

Brick Sample Panels

May 2014

DSDHA

8 Iliffe Yard
London
SE17 3QA

T 020 7703 3555
F 020 7703 3890

E info@dsdha.co.uk
W www.dsdha.co.uk

DERWENT
LONDON



Petersen D58 Grey Brick
[Recessed lime mortar joint]

Petersen D51 Light Brick
[Slightly recessed lime mortar joint]

View towards corner of Charlotte Street and Tottenham Street showing proposed amendments as a result of Stage E design development

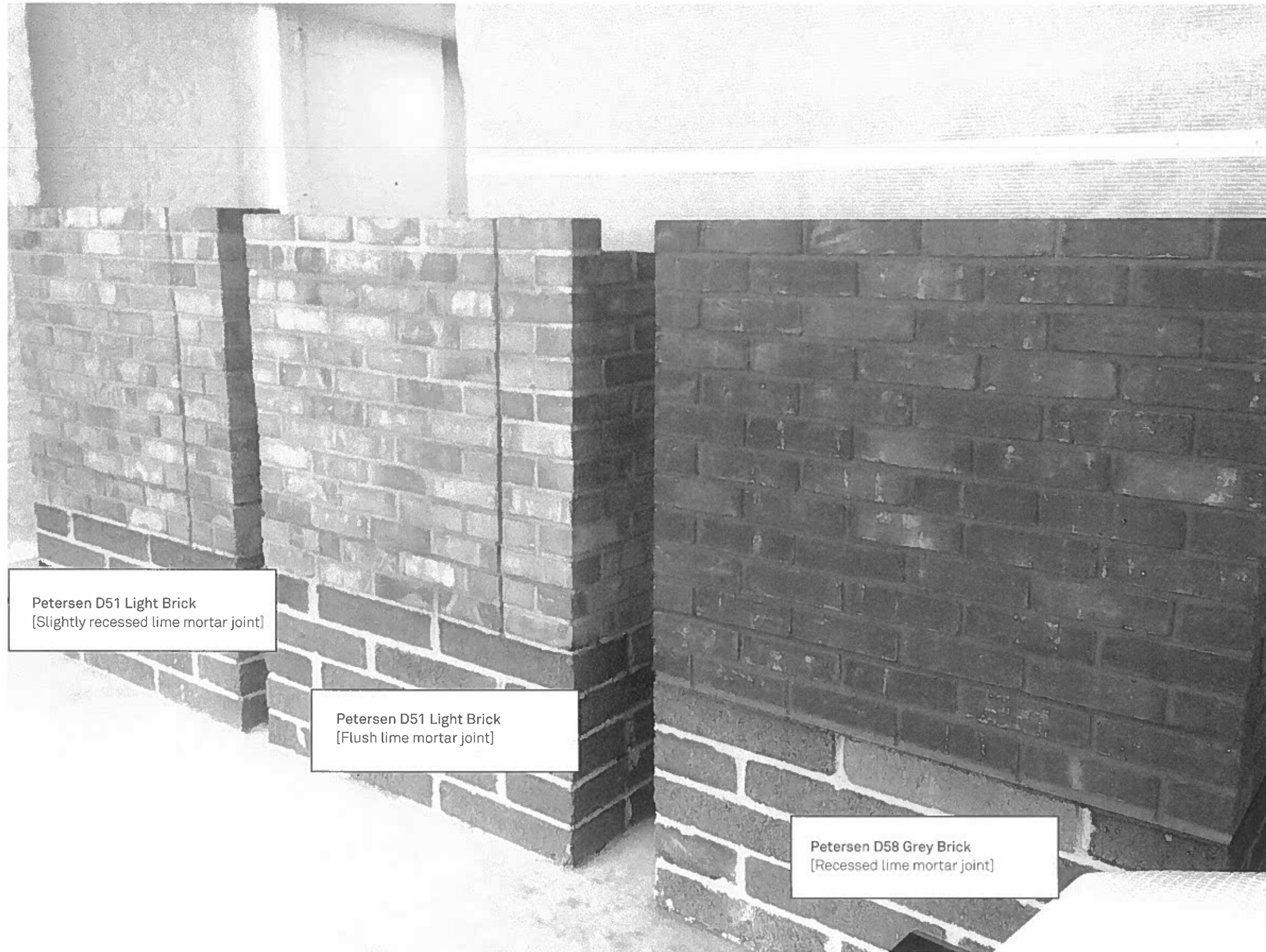


Petersen D58 Grey Brick
[Recessed lime mortar joint]

Petersen D51 Light Brick
[Slightly recessed lime mortar joint]

Petersen D51 Light Brick
[Flush lime mortar joint]

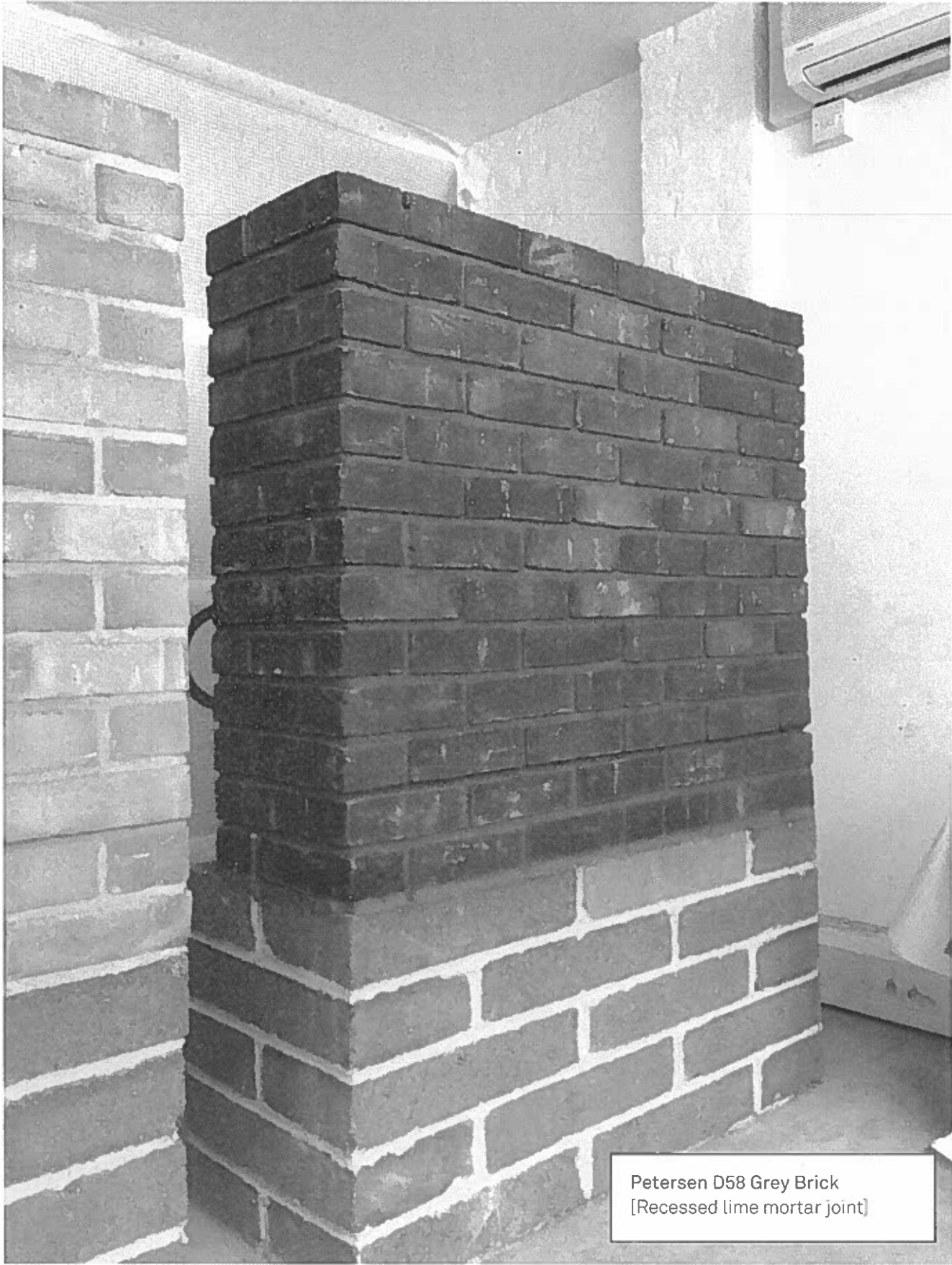
View towards Tottenham Mews elevation showing proposed amendments as a result of Stage E design development



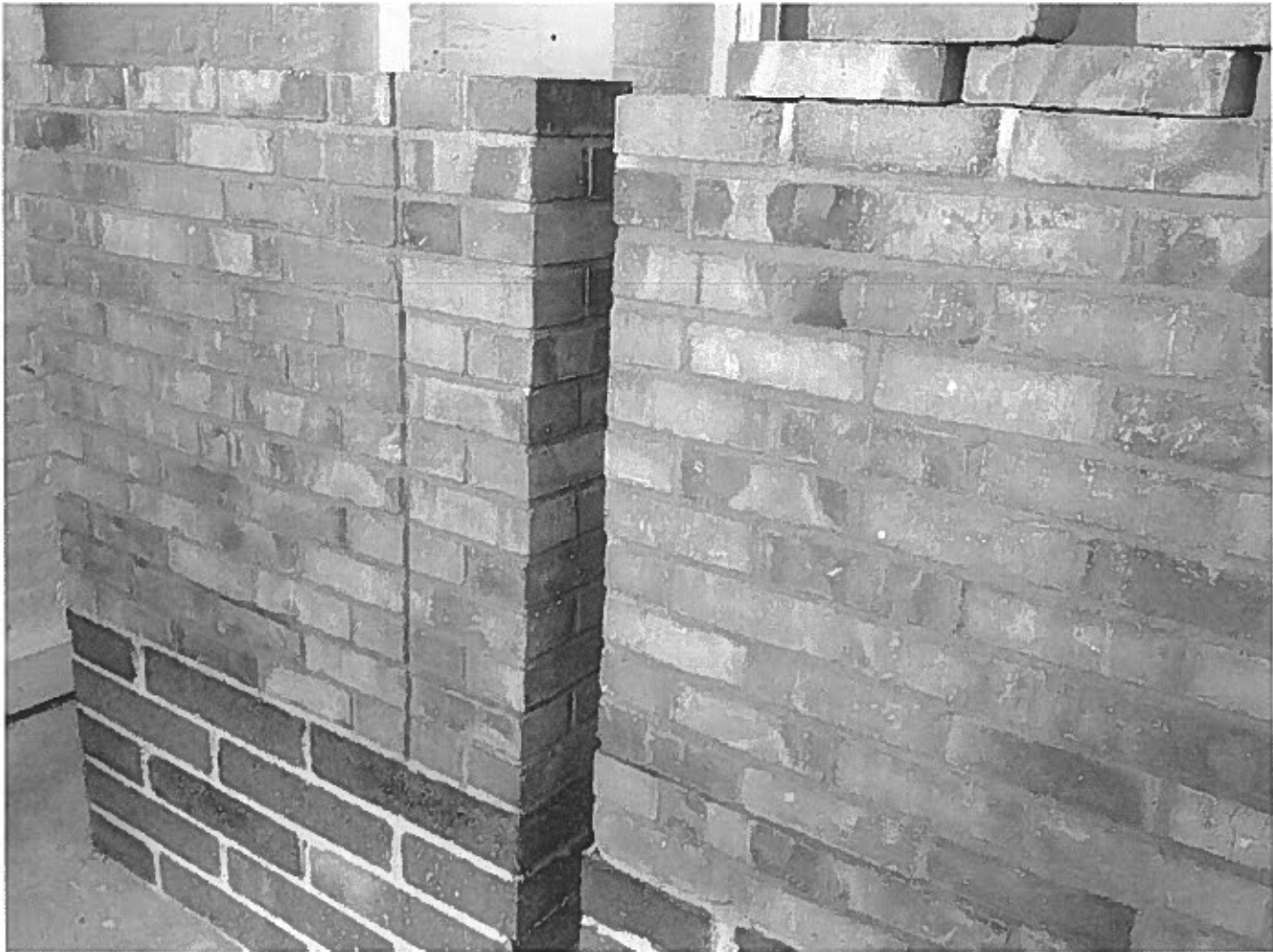
Petersen D51 Light Brick
[Slightly recessed lime mortar joint]

Petersen D51 Light Brick
[Flush lime mortar joint]

Petersen D58 Grey Brick
[Recessed lime mortar joint]

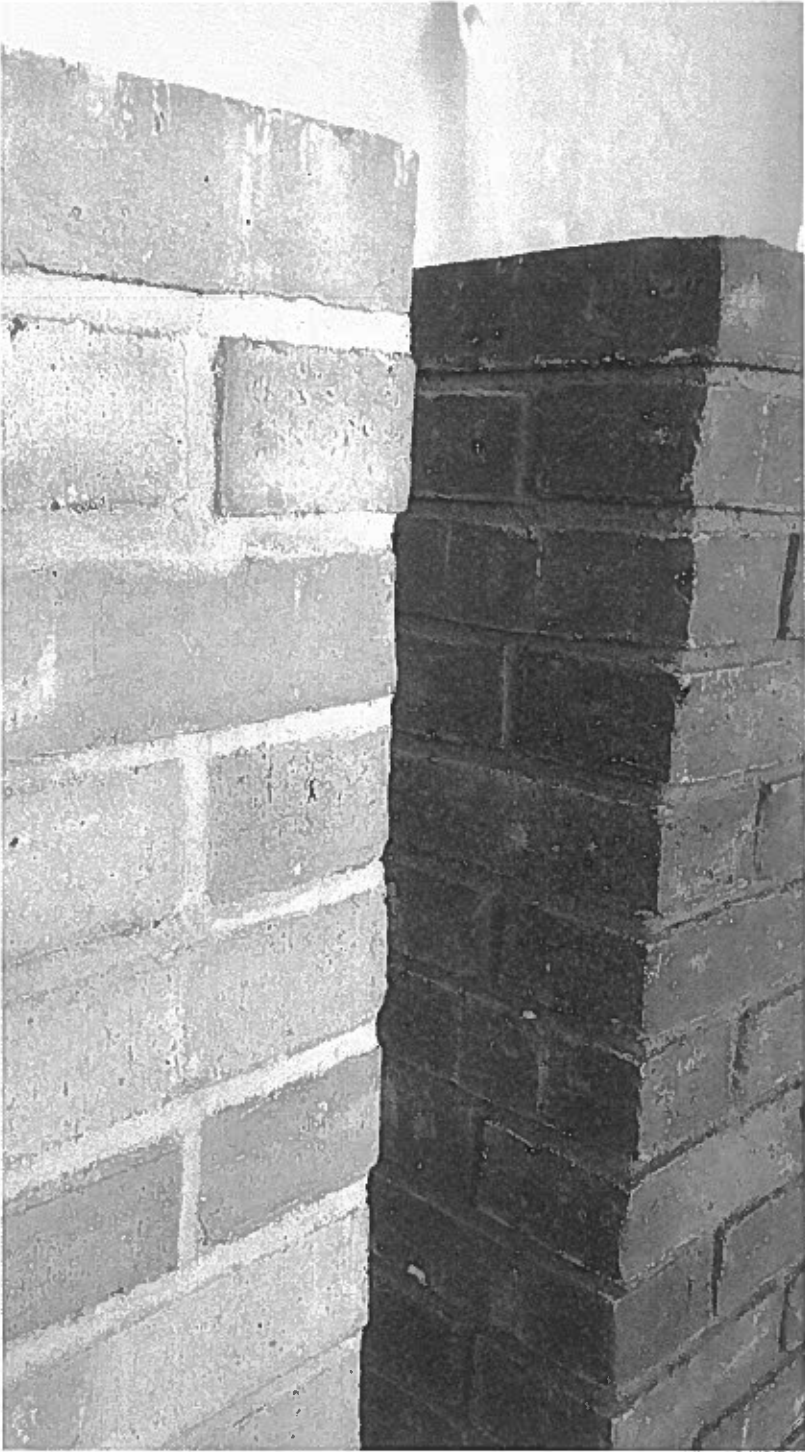


Petersen D58 Grey Brick
[Recessed lime mortar joint]

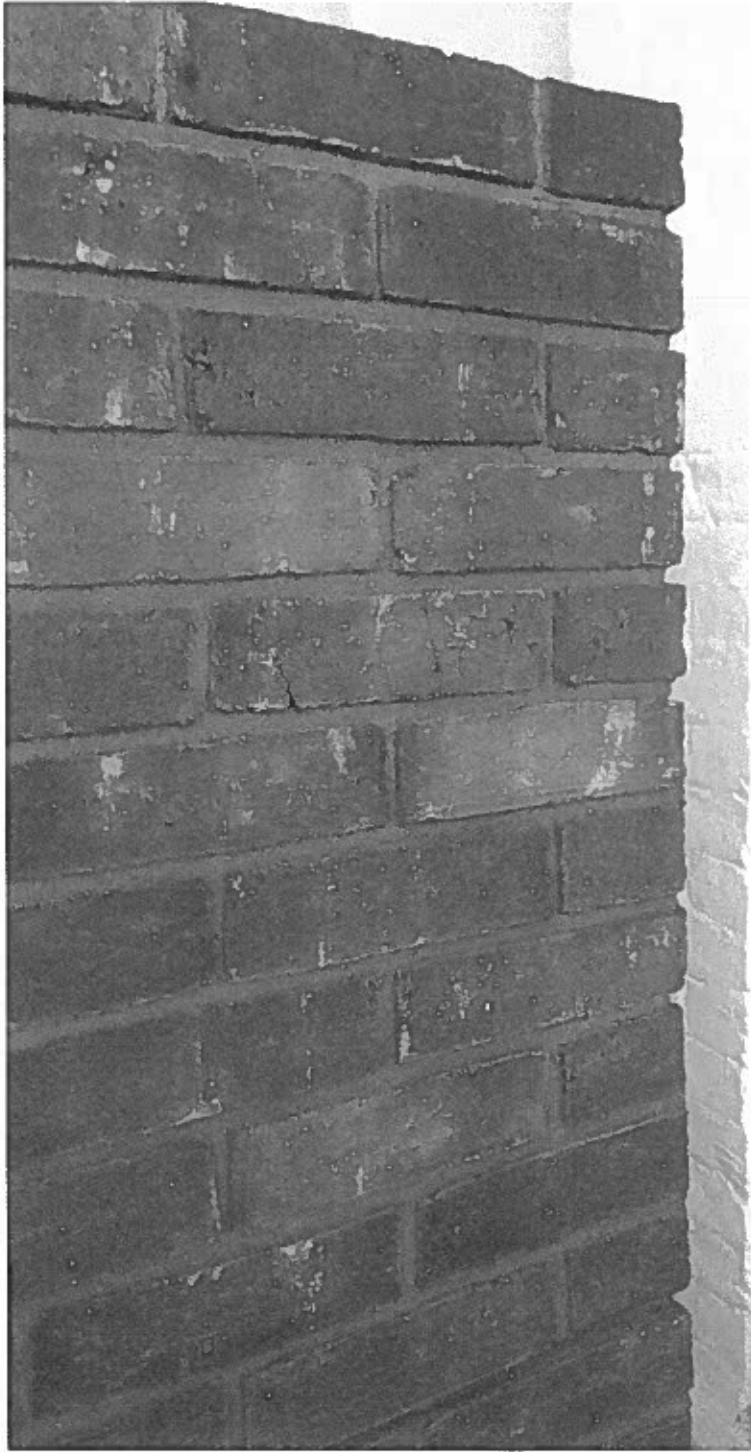


Petersen D51 Light Brick
[Slightly recessed lime mortar joint]

Petersen D51 Light Brick
[Flush lime mortar joint]



Petersen D51 Light Brick
[Flush lime mortar joint]



Petersen D58 Grey Brick
[Recessed lime mortar joint]



Petersen D51 Light Brick
[Slightly recessed lime mortar joint]

Petersen D51 Light Brick
[Flush lime mortar joint]

**Declaration of performance**

No. 1 (Valid from 05.11.2013)



Petersen Tegl A/S
Nybølnervej 14
DK-6310 Broager
Telefon: +45 74 44 12 36
Telefax: +45 74 44 04 34
E-mail: info@petersen-tegl.dk
www. petersen-tegl.dk

1. Identification: Masonry units HD category I
2. Product type: D31-D32-D51-D70-D71-D72-D73-D78-D91-D92-D98
3. Intended use: For loadbearing and non-load-bearing masonry in protected and unprotected environment in walls, columns and partitions
4. Manufacturer: Petersen Tegl A/S, Nybølnervej 14, DK-6310 Broager
5. Representative: Not applicable
6. System: Z+

7. Notified body: Dancert A/S (NB-no. 1073) performed the initial inspection of the manufacturing plant and of factory production control and the continuous surveillance, assesment and evaluation of factory production control and issued the certificate of conformity of the factory production control

8. European Technical Assessment: Not applicable

9. Declared performance:

Essential Characteristics		Performance	Harmonised technical specification
Dimensions	Length/width/height (mm)	220/105/65	EN 771-1:2011
Dimensional tolerances	Mean value	T1	
	Range	NPD*	
Design	Configuration	A	
	Group according to Eurocode 6 (EN 1996)	1	
Compressive strength	Mean value	≥15 N/mm ²	
	Normalised	≥12 N/mm ²	
	Load direction	Parallel to the bed surface	
Moisture movement		NPD*	
Bond strength (fixed value EN 998-2, annex C)		0,15 N/mm ²	
Active soluble salts content		S2	
Reaction to fire		A1	
Water absorption (mass%)		NPD*	
Water vapour permeability		NPD*	
Gross dry density	Mean value	NPD*	
	Tolerance	NPD*	
Thermal resistance		NPD*	
Durability against freeze/thaw		F2	
Dangerous substances		NPD*	

* No performance determined

10. The performance of the product identified in points 1 and 2 is in conformity with the declared performance in point 9.

This declaration of performance is issued under the sole responsibility of the manufacturer identified in point 4.

Signed for and on behalf of the manufacturer by:


Broager,

05.11.2013


CFO Poul M. Kjeldsen

Declaration of Performance - D51 Light Brick

Petersen Tegl A/S
Nybølnervej 14
DK-6310 Broager
Telefon: +45 74 44 12 36
Telefax: +45 74 44 04 34
E-mail: info@petersen-tegl.dk
www. petersen-tegl.dk

		
Petersen Tegl A/S, Nybølnervej 14, DK-6310 Broager		
13		
1073-CPD-M181		
EN 771-1:2011		
Declaration of performance No. 1 (Valid from 05.11.2013)		
Masonry units HD category I		
For loadbearing and non-load-bearing masonry in protected and unprotected environment in walls, columns and partitions		
Dimensions	Length/width/height (mm)	220/105/65
Dimensional tolerances	Mean value	T1
	Range	NPD*
Design	Configuration	A
	Group according to Eurocode 6 (EN 1996)	1
Compressive strength	Mean value	≥15 N/mm ²
	Normalised	≥12 N/mm ²
	Load direction	Parallel to the bed surface
Moisture movement		NPD*
Bond strength (fixed value EN 998-2, annex C)		0,15 N/mm ²
Active soluble salts content		S2
Reaction to fire		A1
Water absorption (mass%)		NPD*
Water vapour permeability		NPD*
Gross dry density	Mean value	NPD*
	Tolerance	NPD*
Thermal resistance		NPD*
Durability against freeze/thaw		F2
Dangerous substances		NPD*

* No performance determined



Declaration of performance

No. 4 (Valid from 05.11.2013)



Petersen Tegl A/S
Nybølnervej 14
DK-6310 Broager
Telefon: +45 74 44 12 36
Telefax: +45 74 44 04 34
E-mail: info@petersen-tegl.dk
www. petersen-tegl.dk

1. Identification: Masonry units HD category I
2. Product type: D42-D43-D46-D47-D48-D49-D55-D58-D96-D97-D99
3. Intended use: For loadbearing and non-load-bearing masonry in protected and unprotected environment in walls, columns and partitions
4. Manufacturer: Petersen Tegl A/S, Nybølnervej 14, DK-6310 Broager
5. Representative: Not applicable
6. System: 2+
7. Notified body: Dancert A/S (NB-no. 1073) performed the initial inspection of the manufacturing plant and of factory production control and the continuous surveillance, assessment and evaluation of factory production control and issued the certificate of conformity of the factory production control
8. European Technical Assessment: Not applicable
9. Declared performance:

Essential Characteristics		Performance	Harmonised technical specification
Dimensions	Length/width/height (mm)	220/105/65	EN 771-1:2011
Dimensional tolerances	Mean value	T1	
	Range	NPD*	
Design	Configuration	A	
	Group according to Eurocode 6 (EN 1996)	1	
Compressive strength	Mean value	≥15 N/mm2	
	Normalised	≥12 N/mm2	
	Load direction	Parallel to the bed surface	
Moisture movement		NPD*	
Bond strength (fixed value EN 998-2, annex C)		0,15 N/mm2	
Active soluble salts content		S2	
Reaction to fire		A1	
Water absorption (mass%)		NPD*	
Water vapour permeability		NPD*	
Gross dry density	Mean value	NPD*	
	Tolerance	NPD*	
Thermal resistance		NPD*	
Durability against freeze/thaw		F2	
Dangerous substances		NPD*	

* No performance determined

10. The performance of the product identified in points 1 and 2 is in conformity with the declared performance in point 9.
- This declaration of performance is issued under the sole responsibility of the manufacturer identified in point 4.
- Signed for and on behalf of the manufacturer by:

Broager, 05.11.2013

P. Kjeldsen
CFO Poul M. Kjeldsen



Petersen Tegl A/S
Nybølnervej 14
DK-6310 Broager
Telefon: +45 74 44 12 36
Telefax: +45 74 44 04 34
E-mail: info@petersen-tegl.dk
www. petersen-tegl.dk

CE		
Petersen Tegl A/S, Nybølnervej 14, DK-6310 Broager		
13		
1073-CPD-M181		
EN 771-1:2011		
Declaration of performance No. 4 (Valid from 05.11.2013)		
Masonry units HD category I		
For loadbearing and non-load-bearing masonry in protected and unprotected environment in walls, columns and partitions		
Dimensions	Length/width/height (mm)	220/105/65
Dimensional tolerances	Mean value	T1
	Range	NPD*
Design	Configuration	A
	Group according to Eurocode 6 (EN 1996)	1
Compressive strength	Mean value	≥15 N/mm2
	Normalised	≥12 N/mm2
	Load direction	Parallel to the bed surface
Moisture movement		NPD*
Bond strength (fixed value EN 998-2, annex C)		0,15 N/mm2
Active soluble salts content		S2
Reaction to fire		A1
Water absorption (mass%)		NPD*
Water vapour permeability		NPD*
Gross dry density	Mean value	NPD*
	Tolerance	NPD*
Thermal resistance		NPD*
Durability against freeze/thaw		F2
Dangerous substances		NPD*

* No performance determined



M0509.v2

Limetec® Hydraulic Lime Mortars

Product Datasheet

1. Introduction

Limetec® Hydraulic Lime Mortars are factory produced pre-mixed dry mortars using dried sands and hydraulic lime. The dry mortar is available in 25kg bags, 1T bulk bags or 20T bulk silos.

2. Suitable Uses

Limetec® Hydraulic Lime Mortars are suitable for blocklaying, bricklaying, stonemasonry.

3. Composition

Limetec® Hydraulic Lime Mortars are manufactured using natural hydraulic lime (NHL), which is produced by burning argillaceous siliceous limestone, high calcium lime (CL 90) and specially graded sand and aggregates.

4. Authority

Limetec® Hydraulic Lime Mortars comply with the durability requirements of BS5628: Part 3:2001. Mortar strengths are measured at 91 days as opposed to 28 days, as lime mortars gain strength more gradually compared to Portland cement based mortars.

Materials used conform to the following standards:

Sand BS EN 12620: 2002
Natural Hydraulic Lime (NHL) BS EN 459: Part 1: 2001
Calcium Lime (CL90) BS EN 459: Part 1: 2001
Pigments BS EN 12874

Admixtures, where used, do not contain calcium chloride.

5. General Advantages

Limetec® Hydraulic Lime Mortars offer several usage and mix advantages over cement and site mixed lime mortars:

- Reduces the need for expansion joints.
- Re-absorbs CO₂ when it cures and sets.
- Allows masonry to be recycled at end of life.
- Provides a breathable form of construction.
- Provides a water shedding barrier for walls.
- Aesthetically enhances masonry.
- Mortar is produced as and when needed when using silo
- Consistent mix proportions.
- Consistent quality and colour of mortar.
- Correct choice of sands.
- Mortars can be re-worked for up to 24 hours.
- Deterrent against pilfering and reduction in wastage with silo use.
- Productivity savings no need to allocate one individual for mixing.

6. Manufacture

Limetec® Hydraulic Lime Mortars are manufactured using factory batching techniques. Raw materials and end products are subject to regular quality control procedures and testing. The materials are weighed and mixed under computer controlled conditions with rigorous quality control procedures. Although mortar is traditionally specified by volume, it is generally accepted that batching by weight produces mortar of a greater consistency.

7. Storage

Dry and protected, if properly stored can use for 1 year

8. Quality Assurance

The product constantly undergoes third party and in-house monitoring, using tested and certified quality management systems conforming to the current international standard EN ISO 9001 and the environment standard EN ISO 14001

9. Health and Safety

See separate Health and Safety sheet



www.limetechnology.co.uk
Unit 126, Milton Park, Abingdon
Oxfordshire, OX14 4SA

info@limetechnology.co.uk
Telephone: 0845 603 1143
Fax: 0845 634 1560