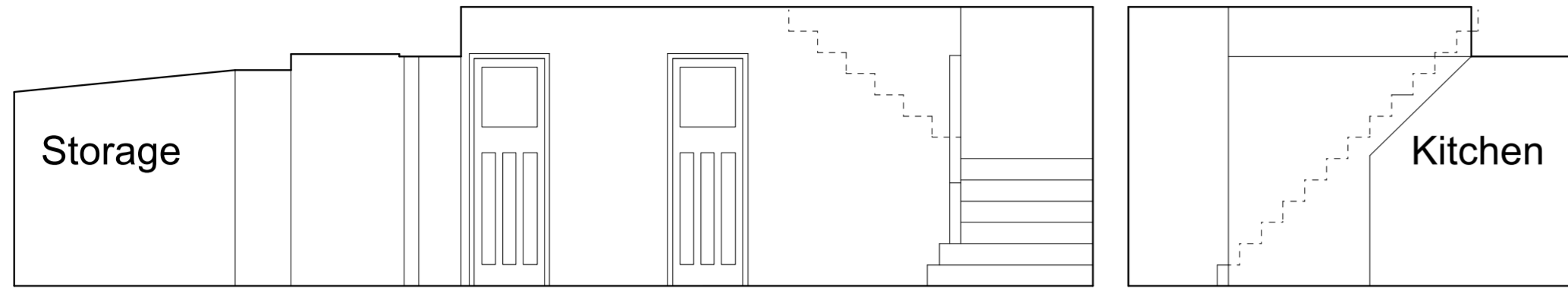
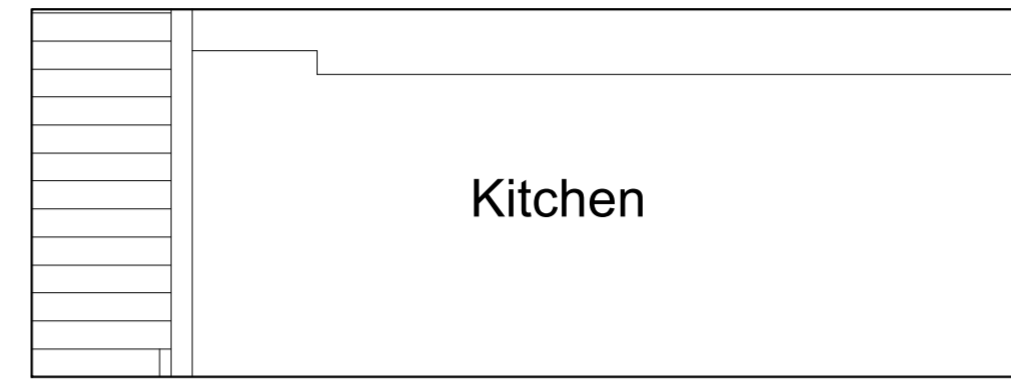


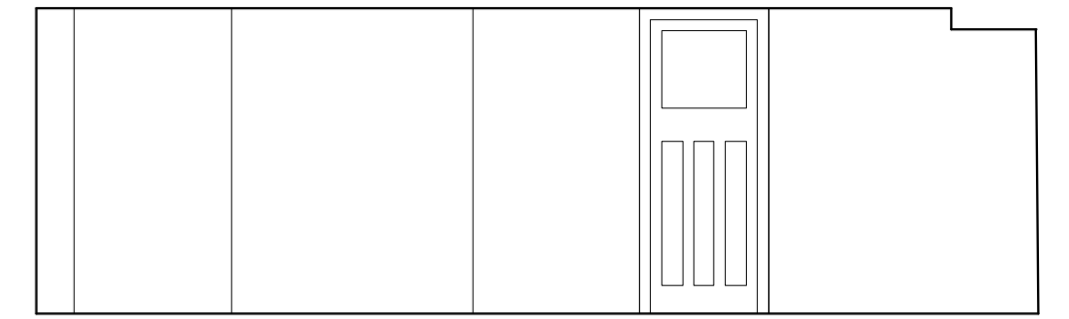
NO.7 BASEMENT ELEVATION A



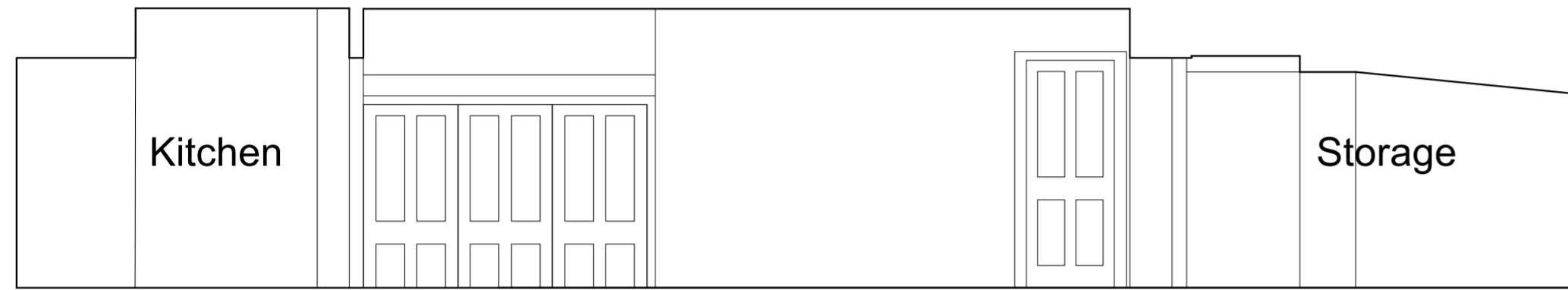
NO.7 BASEMENT ELEVATION B-1



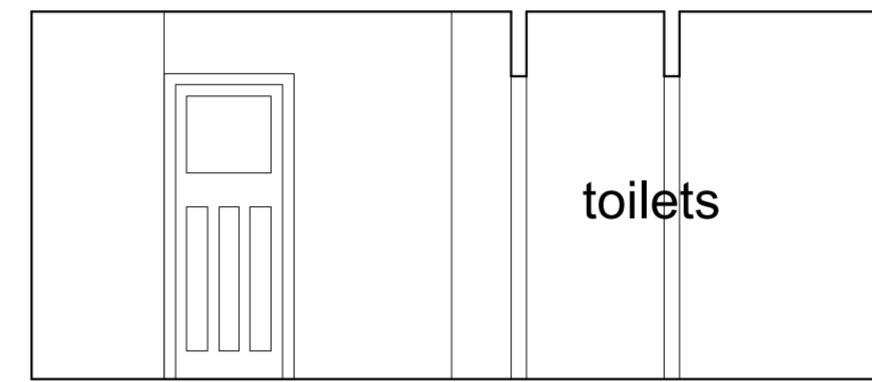
NO.7 BASEMENT ELEVATION B-2



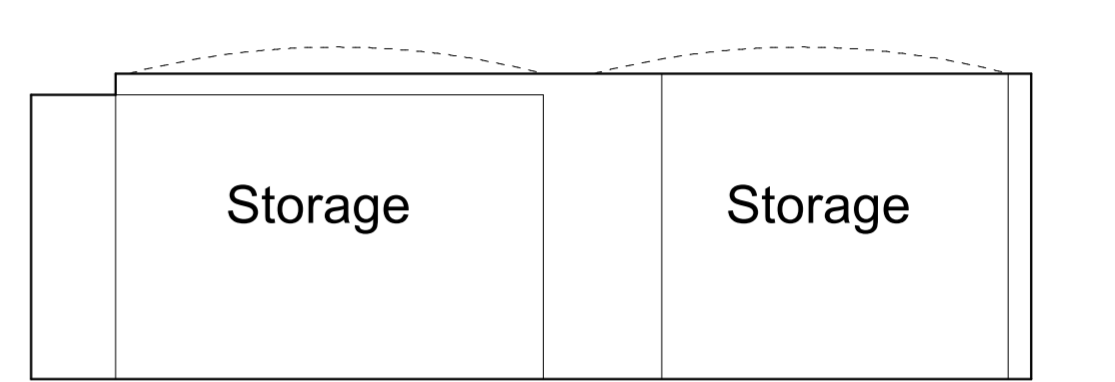
NO.7 BASEMENT ELEVATION C



NO.7 BASEMENT ELEVATION D-1



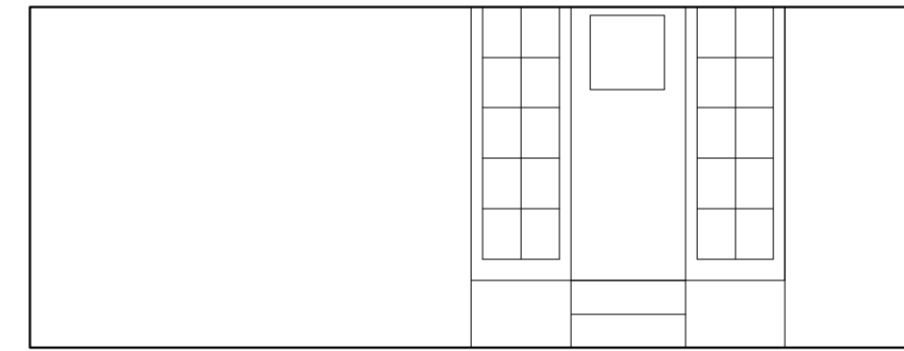
NO.7 BASEMENT ELEVATION D-2



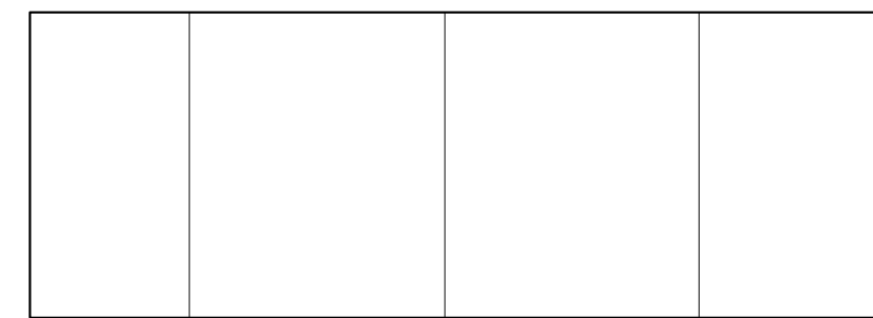
NO.9 BASEMENT ELEVATION A



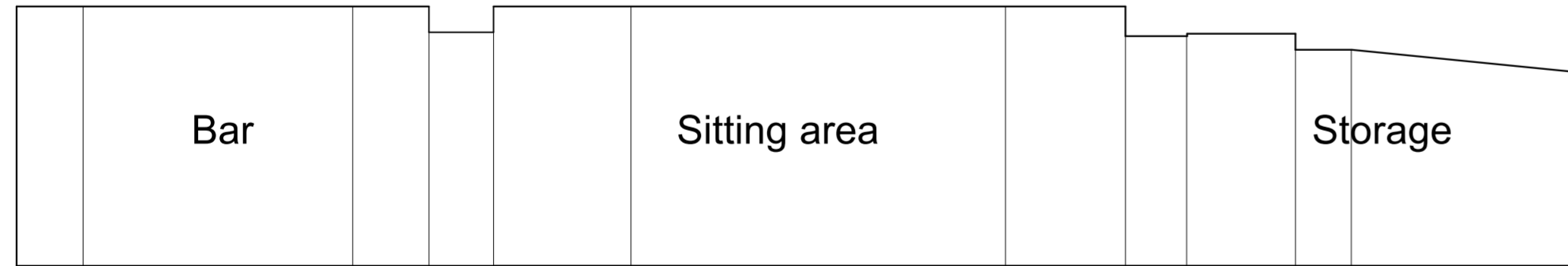
NO.9 BASEMENT ELEVATION B-1



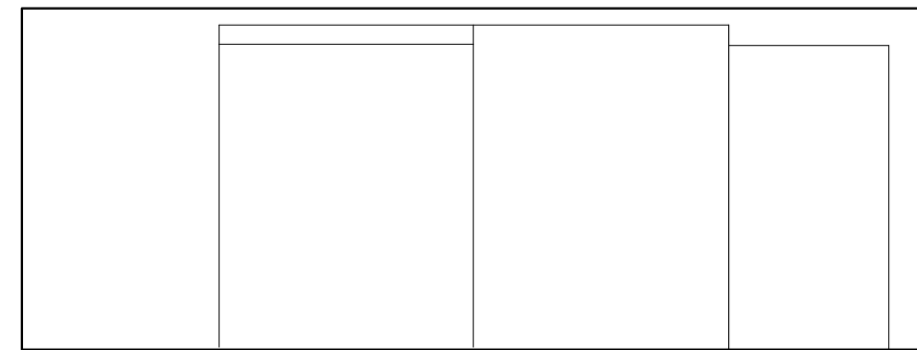
NO.9 BASEMENT ELEVATION B-2



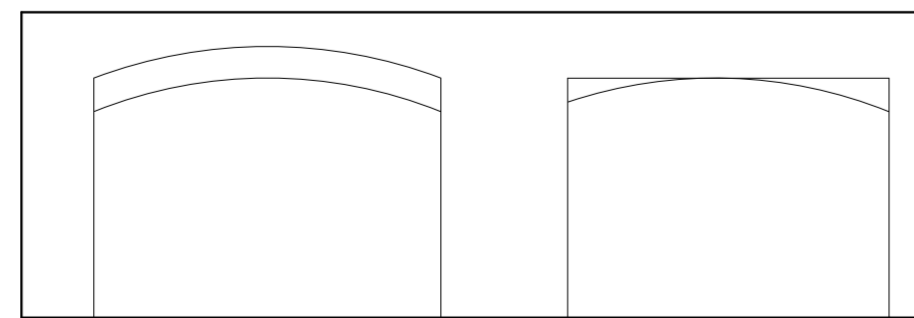
NO.9 BASEMENT ELEVATION C



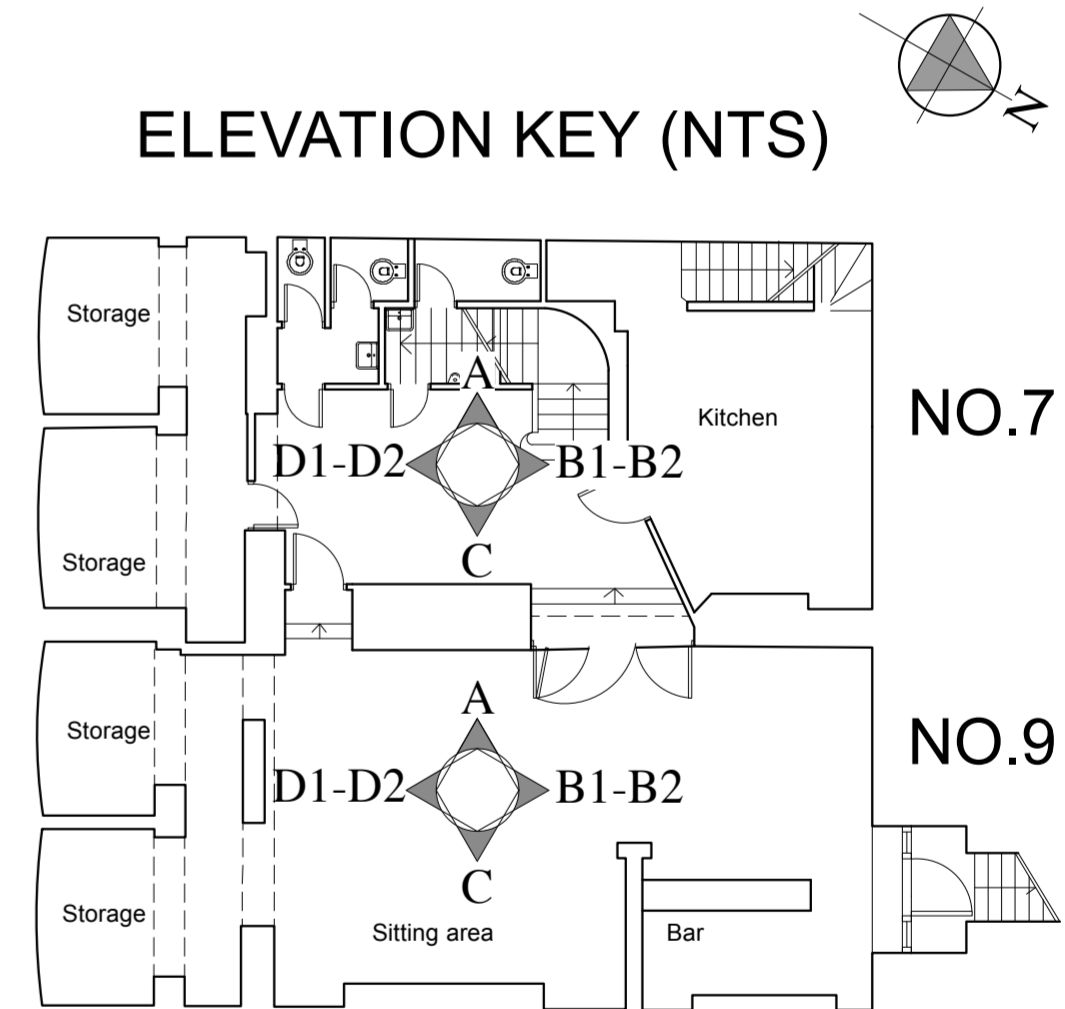
NO.9 BASEMENT ELEVATION D-1



NO.9 BASEMENT ELEVATION D-2



ELEVATION KEY (NTS)



**Brod Wight**  
ARCHITECTS

TEL 020 7722 0810 FAX 020 7722 0939 E MAIL office@brodwight.co.uk WEB www.brodwight.co.uk  
75 Haverstock Hill London NW3 4SL

7/9 POND STREET, LONDON NW3

INTERNAL ELEVATIONS AS EXISTING - BASEMENT 1036-S07

Date May 2014 Scale 1:50@A2 This drawing is copyright Revisions