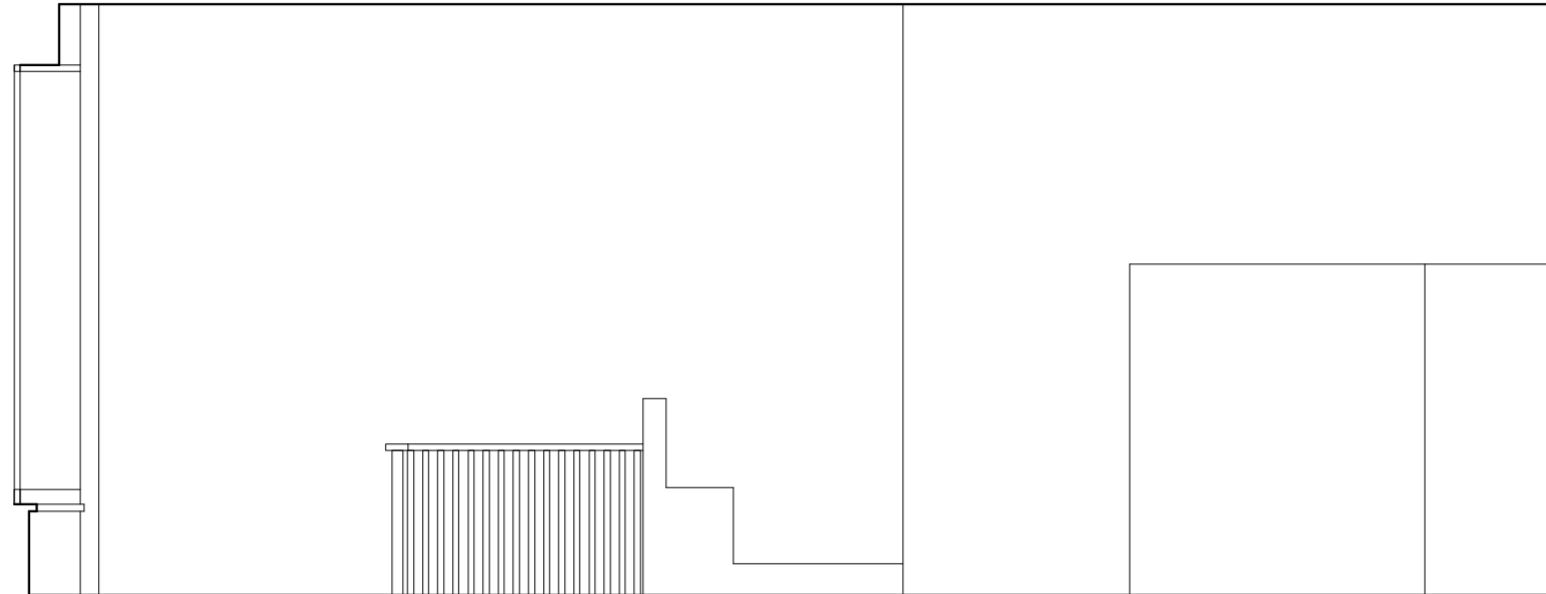
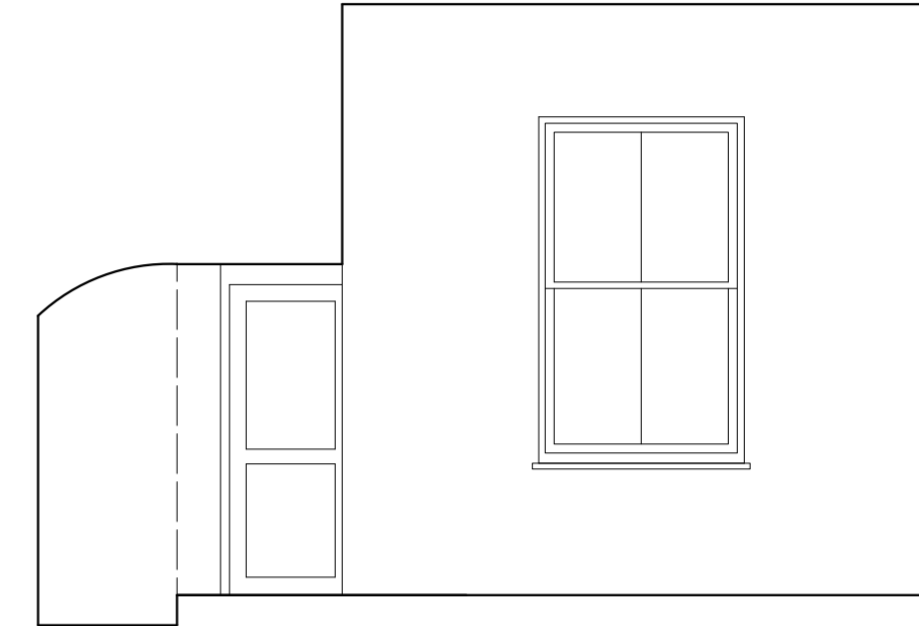


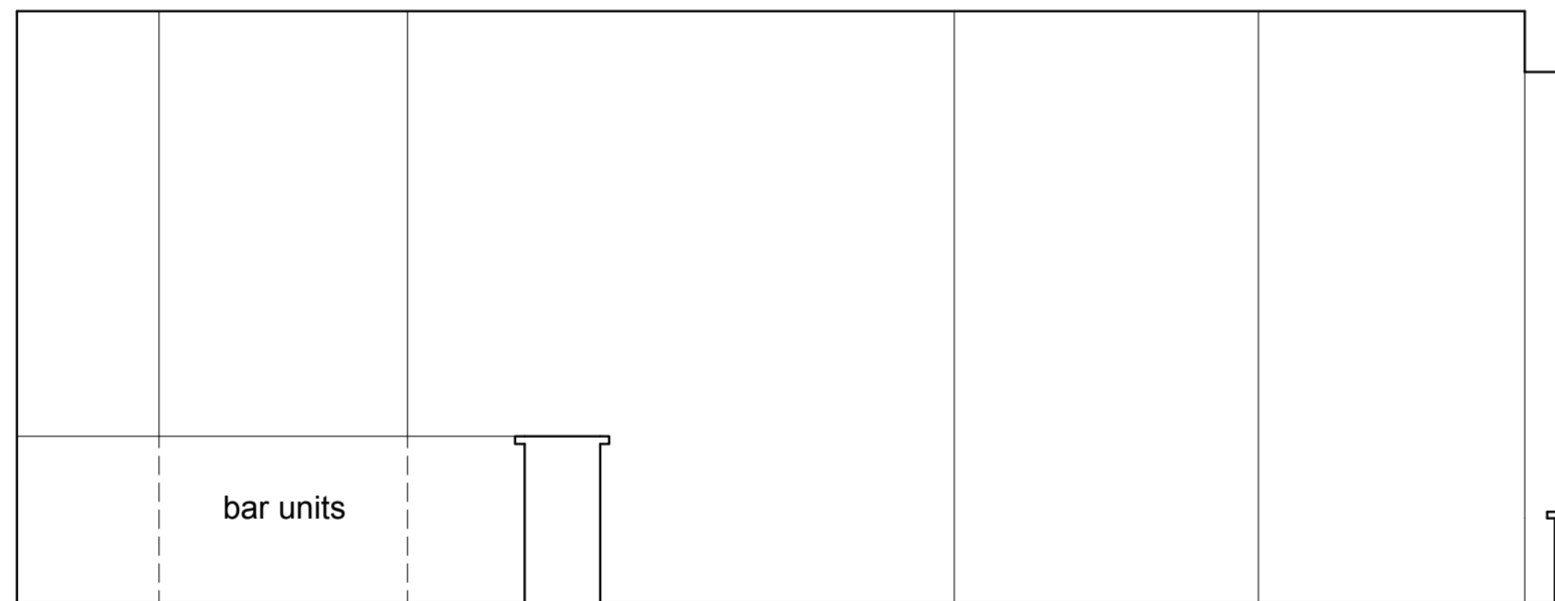
NO.7 GROUND FLOOR ELEVATION A



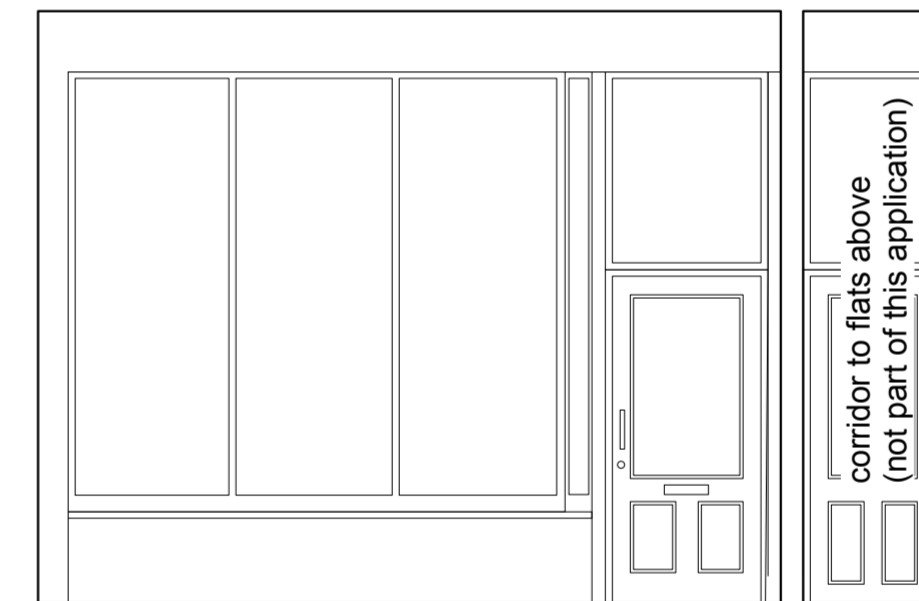
NO.7 GROUND FLOOR ELEVATION B



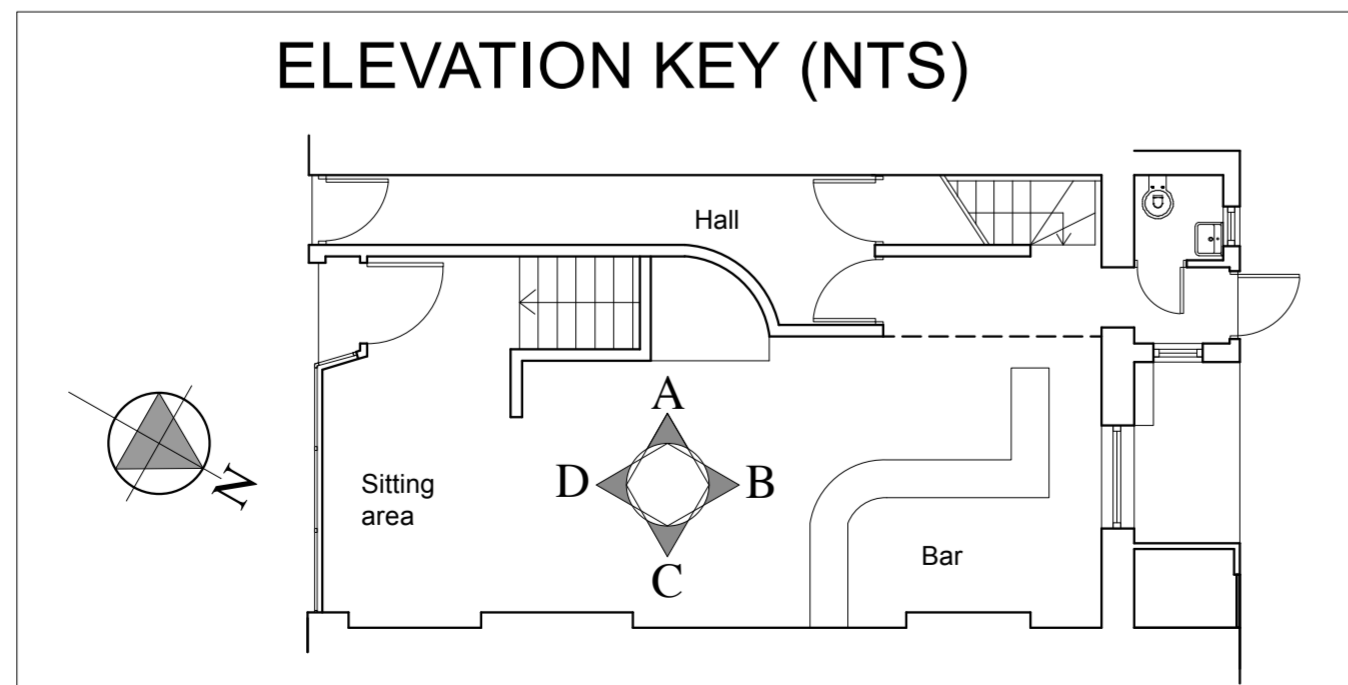
NO.7 GROUND FLOOR ELEVATION C



NO.7 GROUND FLOOR ELEVATION D



ELEVATION KEY (NTS)



Brod Wight
ARCHITECTS

TEL 020 7722 0810 FAX 020 7722 0939 E MAIL office@brodwight.co.uk WEB www.brodwight.co.uk
75 Haverstock Hill London NW3 4SL

7/9 POND STREET, LONDON NW3

INTERNAL ELEVATIONS AS EXISTING - GROUND

1036-S06

Date May 2014 Scale 1:50@A2 This drawing is copyright

Revisions