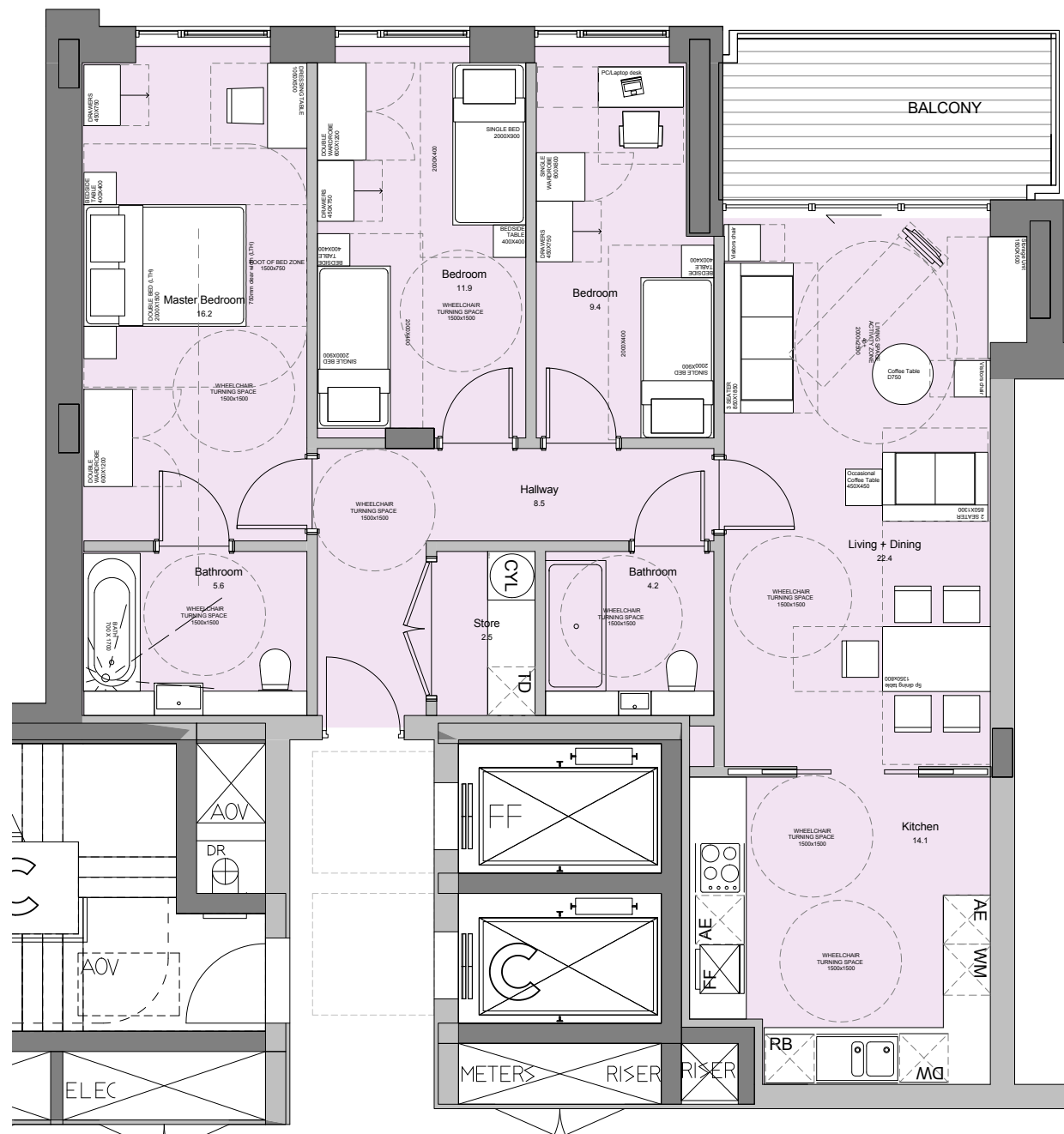


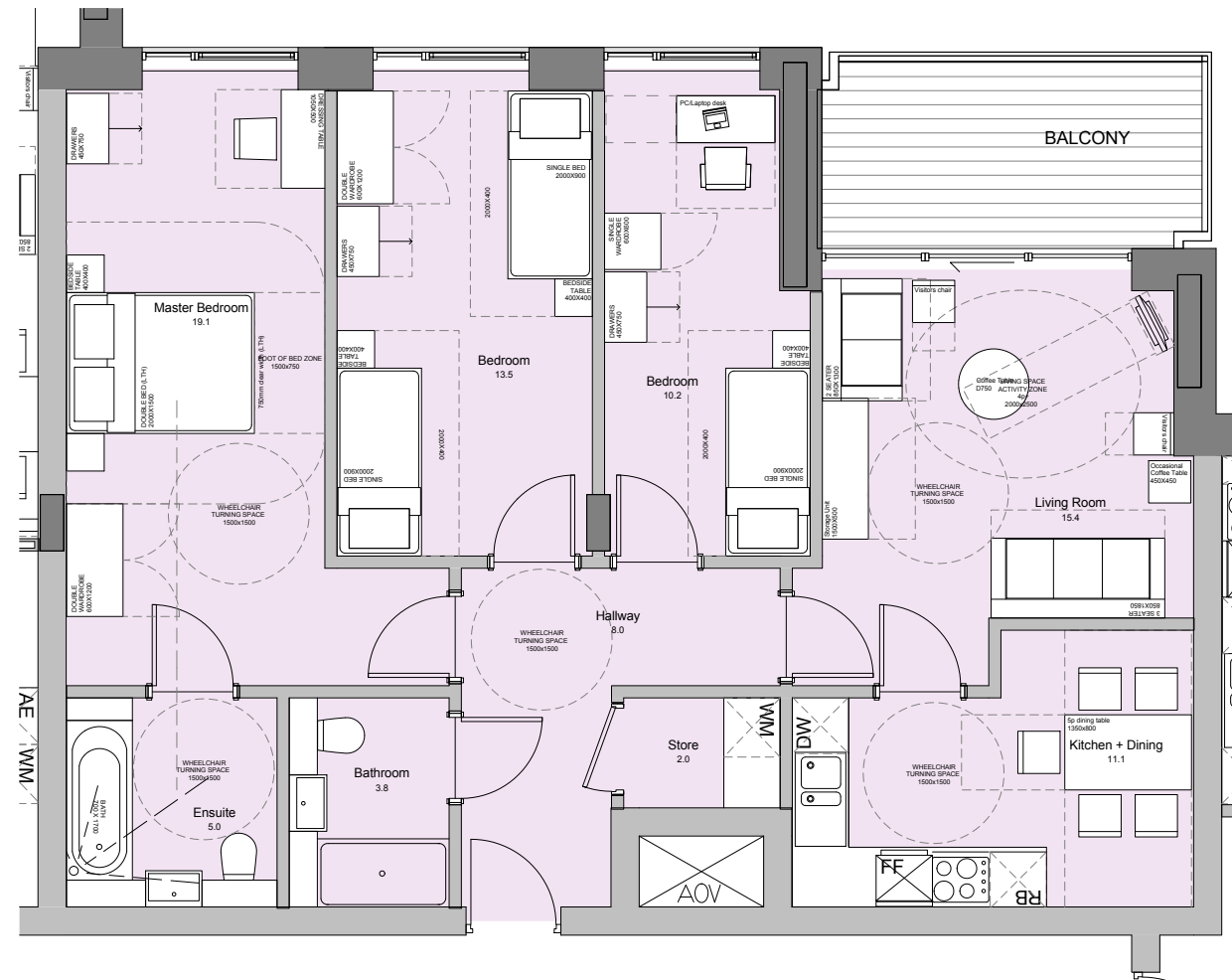
KEY MAP

Type: P01
 Tenure: Open Market
 3 bed 5 person
 NIA: 98.7sq.m (1,063 sq.ft)
 No. of Apartment: 6

Type: P02
 Tenure: Open Market
 3 bed 5 person
 NIA: 92.5sq.m (996 sq.ft)
 No. of Apartment: 4



APARTMENT TYPE - P01



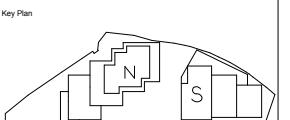
APARTMENT TYPE - P02



General notes:
 This drawing is copyright of KSR architects. This drawing must be read in conjunction with the Designer's Risk Assessment, specification and all other relevant documentation and drawings. KSR architects accept no liability for any expense, loss or damage of whatsoever nature and however arising from any variation made to this drawing or in the execution of the work to which it relates which has not been referred to them and their approval obtained.
 Do not scale from this drawing or the digital data, only figured dimensions are to be used. For Planning refer to linear scale.
 Check all dimensions on site prior to carrying out any works - advise any discrepancy
 Notes/Legends

P: 1 Planning Submission 01.07.14 SHY GJ
 Rev: Notes 06.mm.yj By: Chd

© KSR architects
 Stamp: **PLANNING SUBMISSION**



KSRARCHITECTS
 KSR Architects LLP
 14 Grosvenor Street
 London W1R 0ND
 Tel: +44 (0)20 7882 5000
 Email: info@ksrarchitects.com
 Website: www.ksrarchitects.com

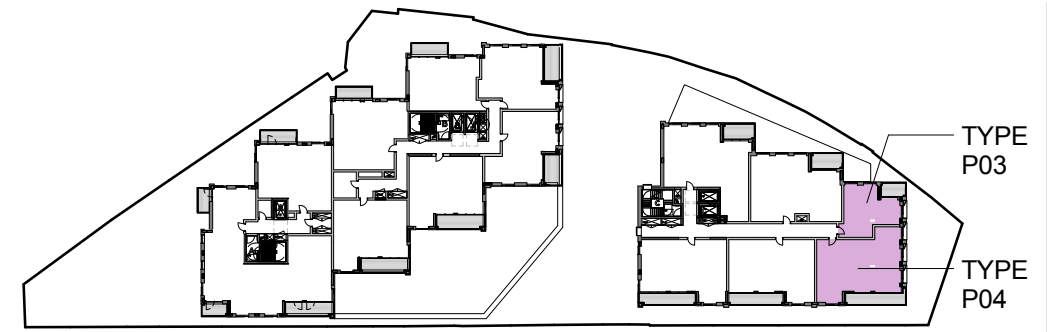
Project:
CAMLEY STREET MIXED EMPLOYMENT AND RESIDENTIAL SCHEME

Title:
UNIT PLAN LAYOUT - TYPE P01-P02

Date: JULY 2014 Drawn By: SHY Checked: GJ

Scale: As indicated @ A1 / 1:40 @ A3

Project Ref:	Drawing No:	Revision:
CML	CML - 120	P1

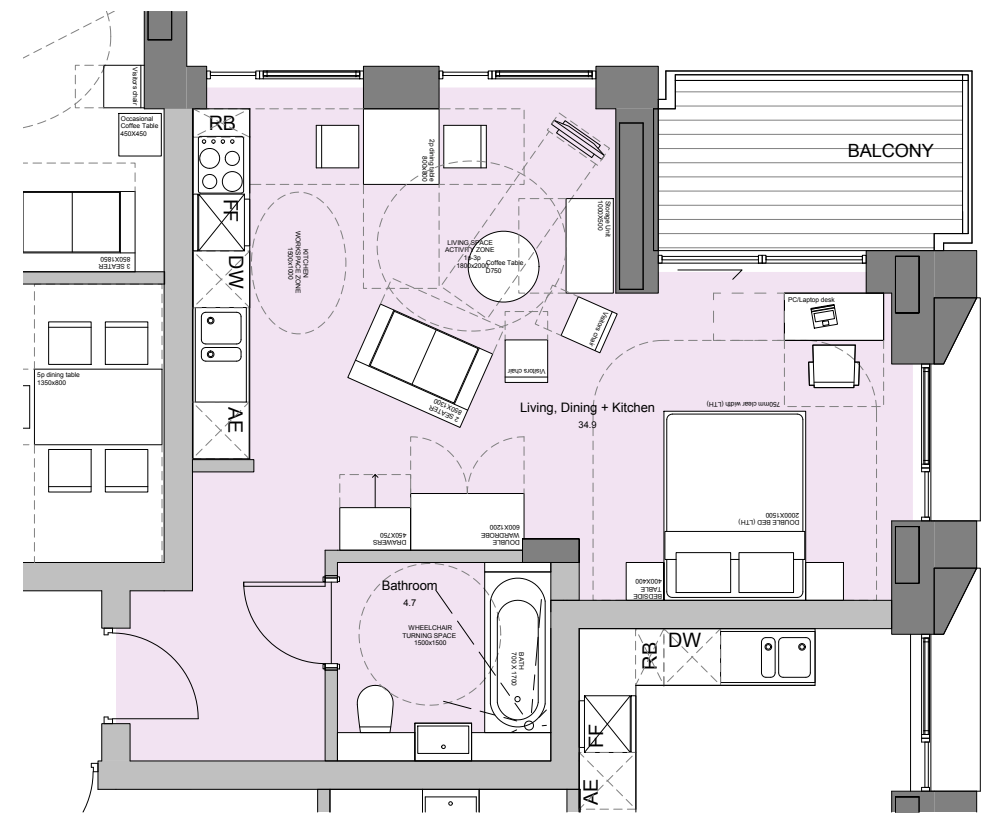


KEY MAP

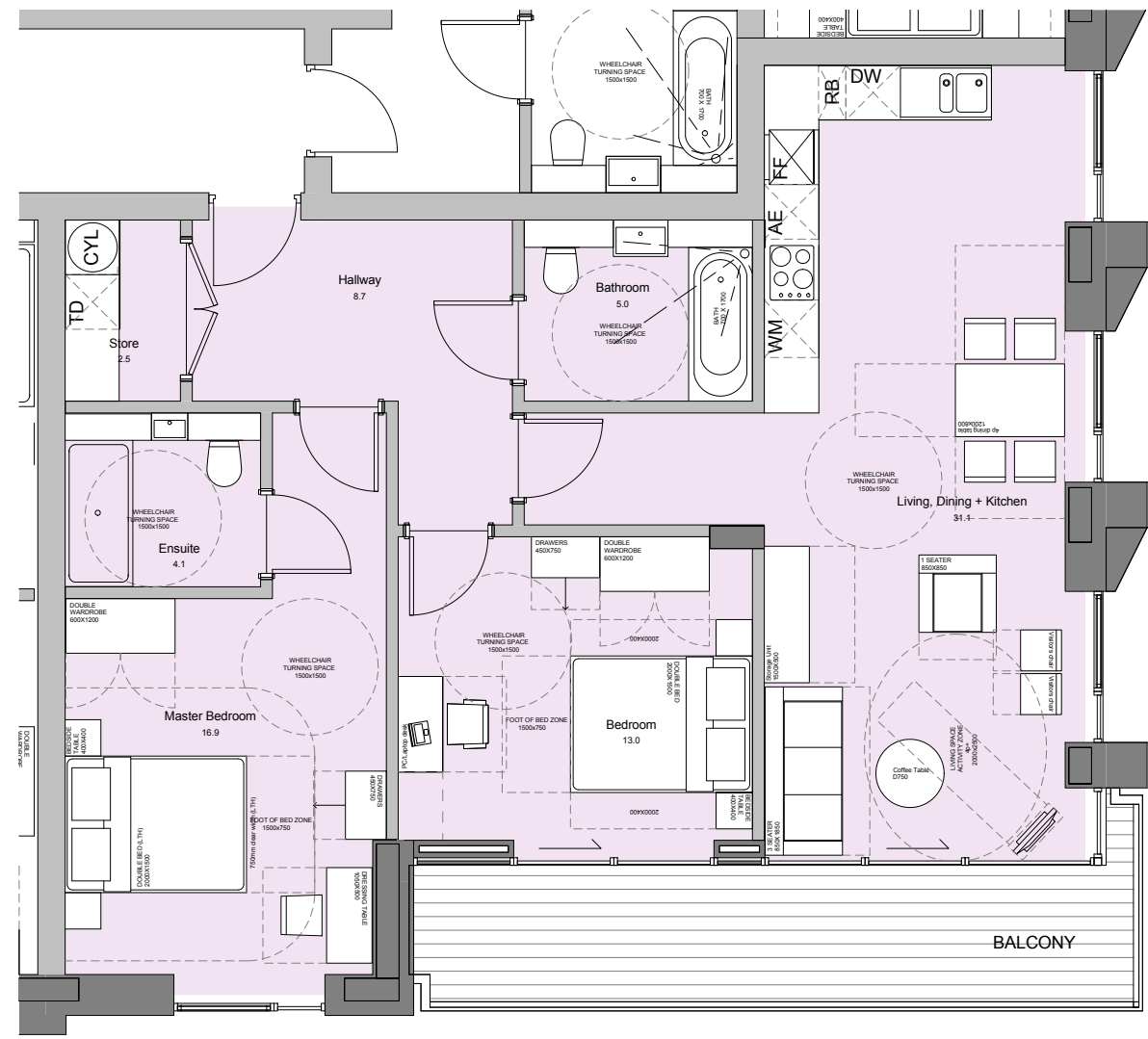
General notes:
 This drawing is copyright of KSR architects. This drawing must be read in conjunction with the Designer's Risk Assessment, specification and all other relevant documentation and drawings. KSR architects accept no liability for any expense, loss or damage of whatsoever nature and however arising from any variation made to this drawing or in the execution of the work to which it relates which has not been referred to them and their approval obtained.
 Do not scale from this drawing or the digital data, only figured dimensions are to be used. For Planning refer to linear scale.
 Check all dimensions on site prior to carrying out any works - advise any discrepancy
 Notes/Legends

Type: P03
 Tenure: Open Market
 Studio
 NIA: 40.3 sq.m (433 sq.ft)
 No. of Apartment: 4

Type: P04
 Tenure: Open Market
 2 bed 4 person
 NIA: 85.4sq.m (919 sq.ft)
 No. of Apartment: 4



APARTMENT TYPE - P03



APARTMENT TYPE - P04

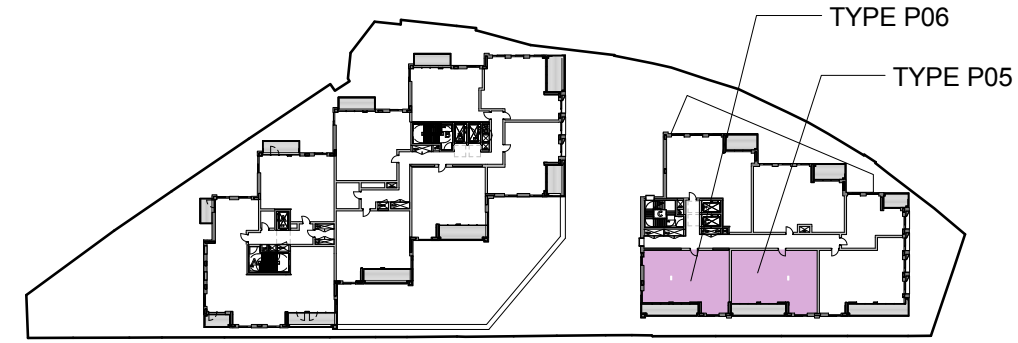


P. 1 Planning Submission 01.07.14 SHY GJ
 Rev/ Notes 06 mm.vj By/ CML
 © KSR architects
 Stamp: **PLANNING SUBMISSION**
 Key Plan:

KSRARCHITECTS
 KSR Architects LLP
 14 Gonsland Street London W8H 0SD
 T +44 (0)20 7882 5000
 www.ksararchitects.com

Project: **CAMLEY STREET MIXED EMPLOYMENT AND RESIDENTIAL SCHEME**
 Title: **UNIT PLAN LAYOUT - TYPE P03-P04**

Date: JULY 2014 Drawn By: SHY Checked: GJ
 Scale: As indicated @ A1 / 1:80 @ A3
 Project Ref: CML Drawing No: CML - 121 Revision: P1

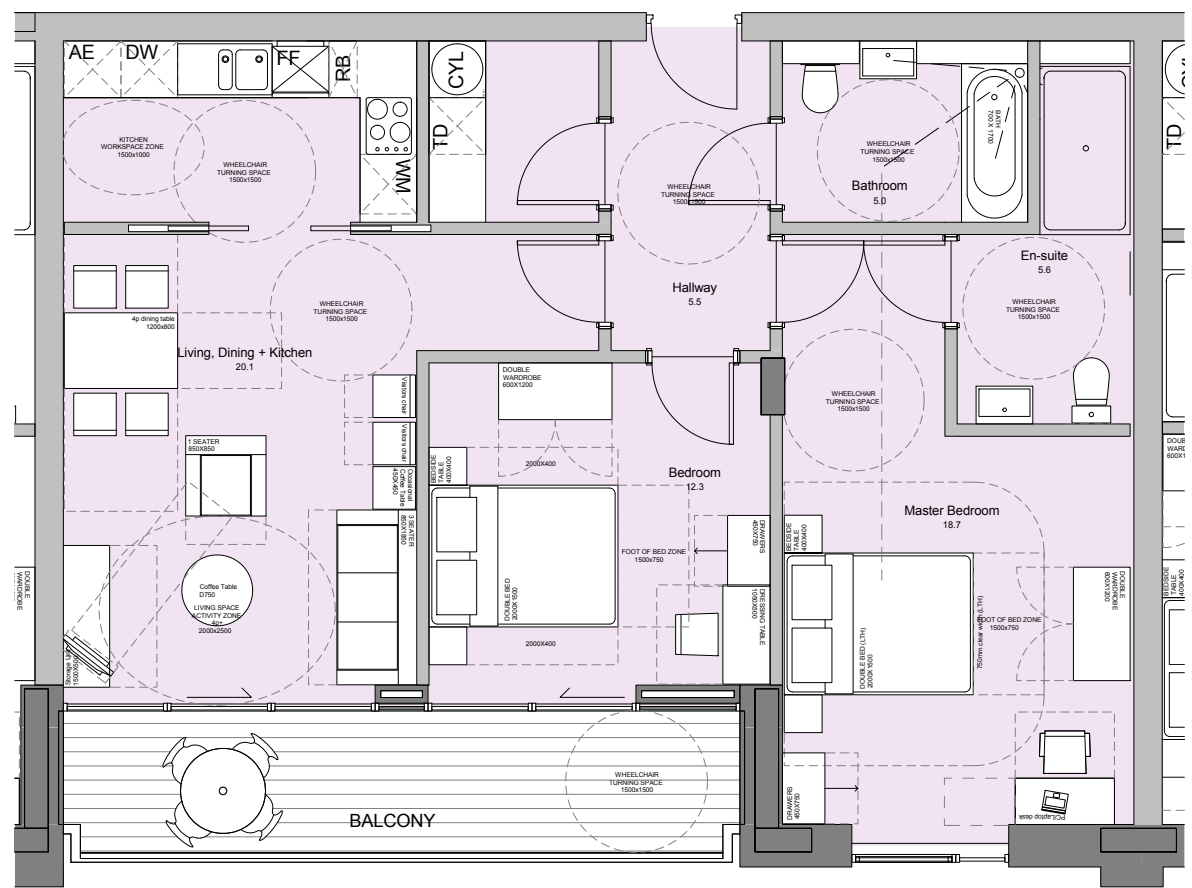


KEY MAP

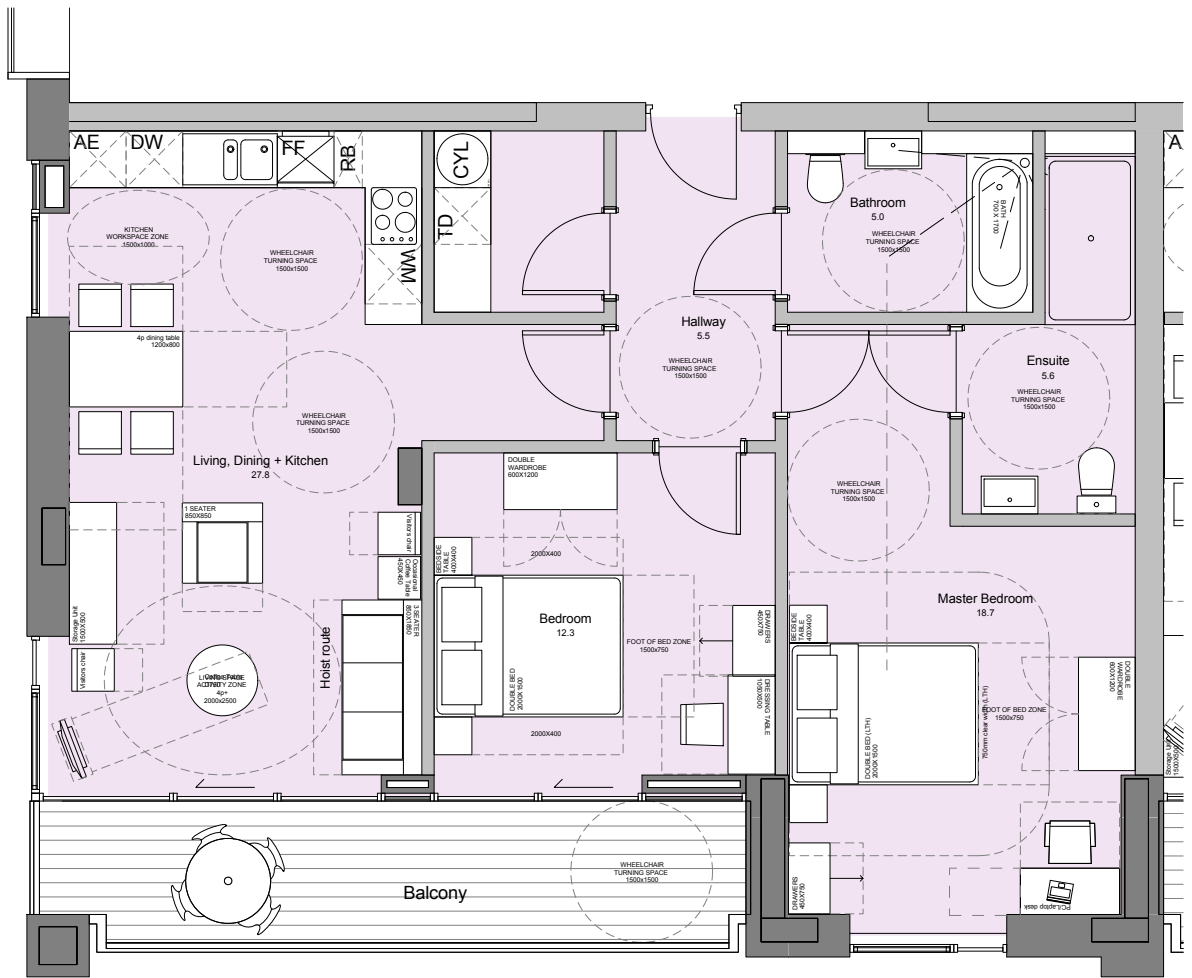
General notes:
 This drawing is copyright of KSR architects. This drawing must be read in conjunction with the Designer's Risk Assessment, specification and all other relevant documentation and drawings. KSR architects accept no liability for any expense, loss or damage of whatsoever nature and however arising from any variation made to this drawing or in the execution of the work to which it relates which has not been referred to them and their approval obtained.
 Do not scale from this drawing or the digital data, only figured dimensions are to be used. For Planning refer to linear scale.
 Check all dimensions on site prior to carrying out any works - advise any discrepancy
 Notes/Legends

Type: P05
 Tenure: Open Market
 2 bed 4 person
 NIA: 82.5 sq.m (889 sq.ft)
 No. of Apartment: 4

Type: P06
 Tenure: Open Market
 2 bed 4 person
 NIA: 81.9 sq.m (882 sq.ft)
 No. of Apartment: 6



APARTMENT TYPE - P05



APARTMENT TYPE - P06



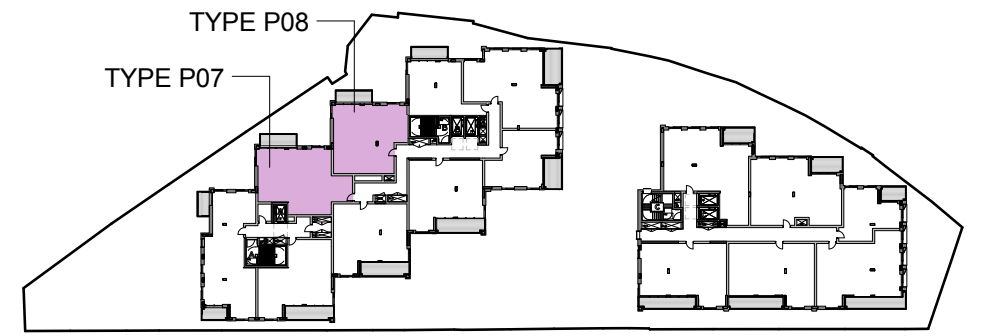
P. 1 Planning Submission 01.07.14 SHY_GJ
 Rev/ Notes 06 mm.vj By/ CML
 © KSR architects
 Stamp: **PLANNING SUBMISSION**
 Key Plan:

KSRARCHITECTS
 KSR Architects LLP
 14 Grosvenor Street
 London W1G 0ND
 Tel: +44 (0)20 7682 5000
 www.ksrarchitects.com

Project:
CAMLEY STREET MIXED EMPLOYMENT AND RESIDENTIAL SCHEME

Title:
UNIT PLAN LAYOUT - TYPE P05-P06

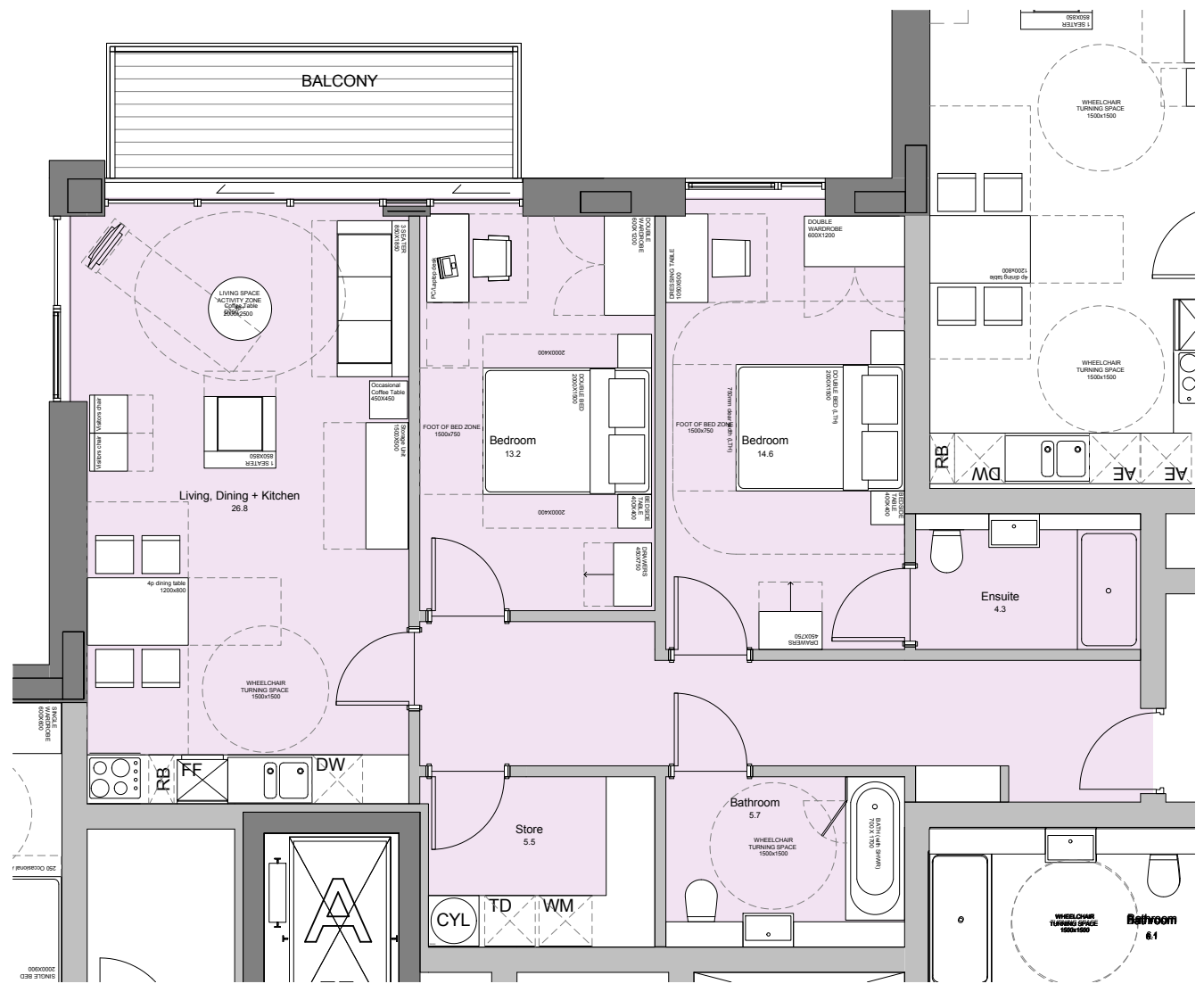
Date: JULY 2014 Drawn By: SHY Checked: GJ
 Scale: As indicated @ A1 / 1:80 @ A3
 Project Ref: CML Drawing No: CML - 122 Revision: P1



KEY MAP

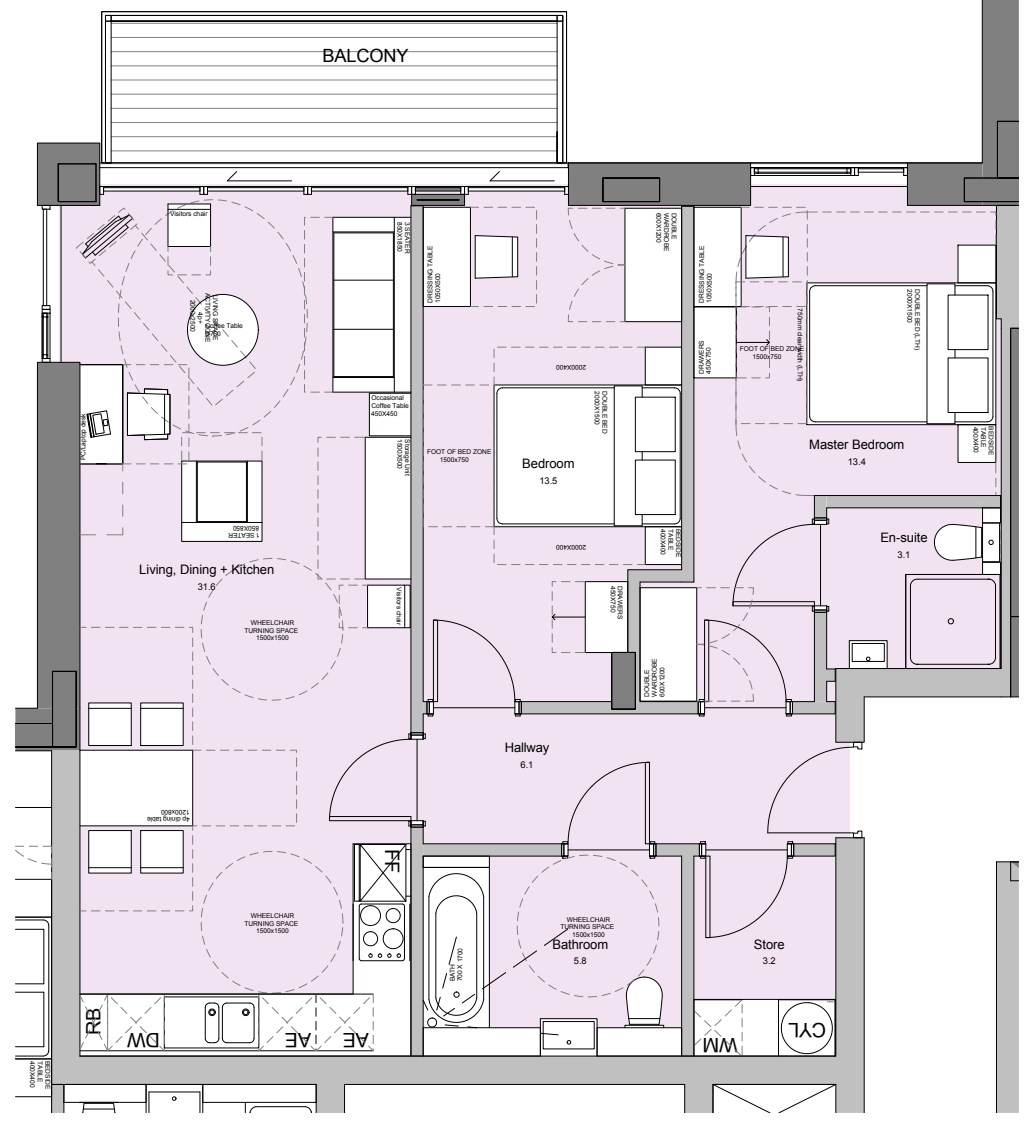
General notes:
 This drawing is copyright of KSR architects. This drawing must be read in conjunction with the Designer's Risk Assessment, specification and all other relevant documentation and drawings. KSR architects accept no liability for any expense, loss or damage of whatsoever nature and however arising from any variation made to this drawing or in the execution of the work to which it relates which has not been referred to them and their approval obtained.
 Do not scale from this drawing or the digital data, only figured dimensions are to be used. For Planning refer to linear scale.
 Check all dimensions on site prior to carrying out any works - advise any discrepancy
 Notes/Legends

Type: P07
 Tenure: Open Market
 2 bed 4 person
 NIA: 86.8 sq.m (934 sq.ft)
 No. of Apartment: 3



APARTMENT TYPE - P07

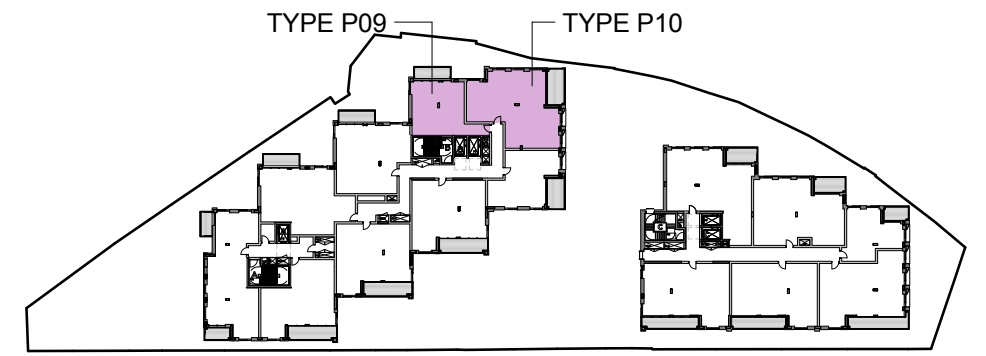
Type: P08
 Tenure: Open Market
 2 bed 4 person
 NIA: 80.4 sq.m (865 sq.ft)
 No. of Apartment: 6



APARTMENT TYPE - P08



P. 1 Planning Submission	01.07.14 SHY_GJ
Rev/Notes	06.mm.vj By Chkd
© KSR architects	
Stamp	PLANNING SUBMISSION
Key Plan	
	KSRARCHITECTS KSR Architects LLP 14 Gower Street London WC1E 6BT T: +44 (0)20 7882 5000 E: info@ksrarchitects.com www.ksrarchitects.com
Project: CAMLEY STREET MIXED EMPLOYMENT AND RESIDENTIAL SCHEME	
Title: UNIT PLAN LAYOUT - TYPE P07-P08	
Date: JULY 2014	Drawn By: SHY Checked: GJ
Scale: As indicated @ A1 / 1:80 @ A3	
Project Ref: CML	Drawing No: CML - 123
	Revision: P1

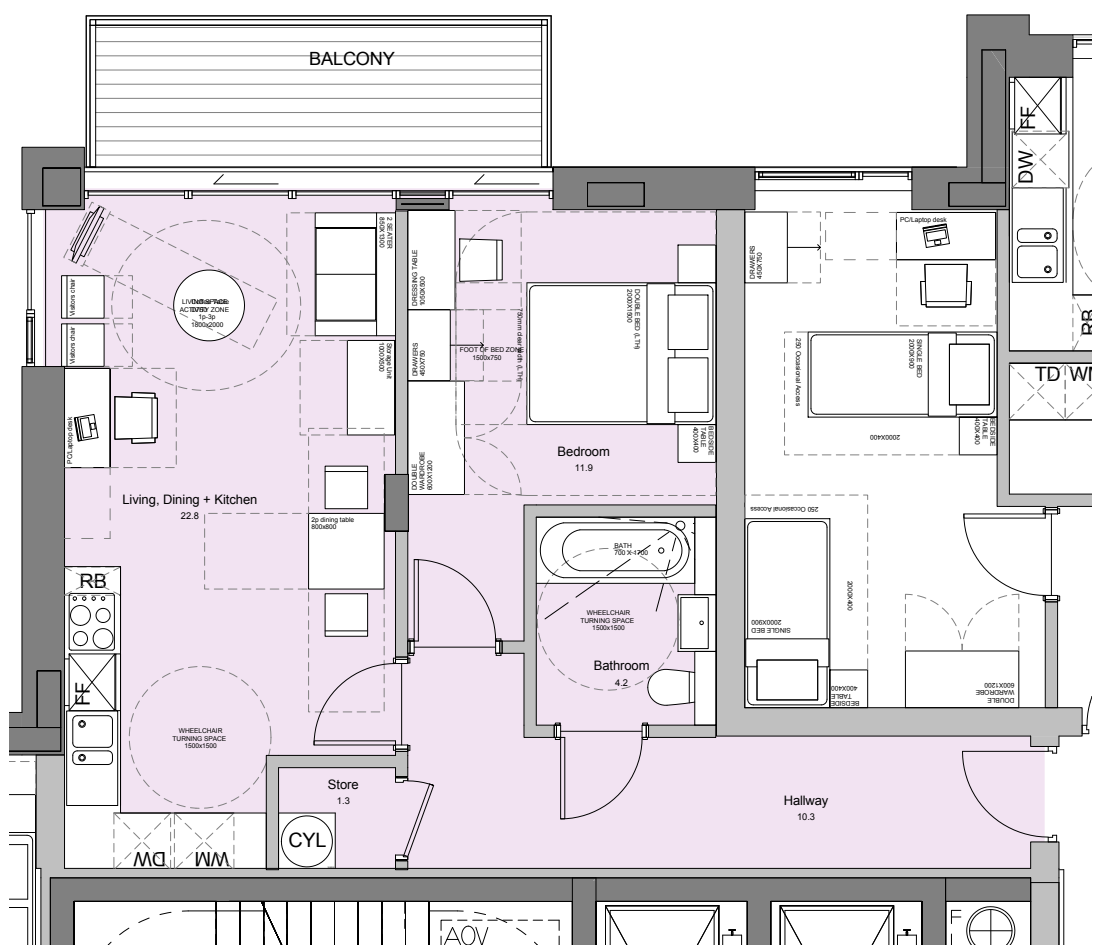


KEY MAP

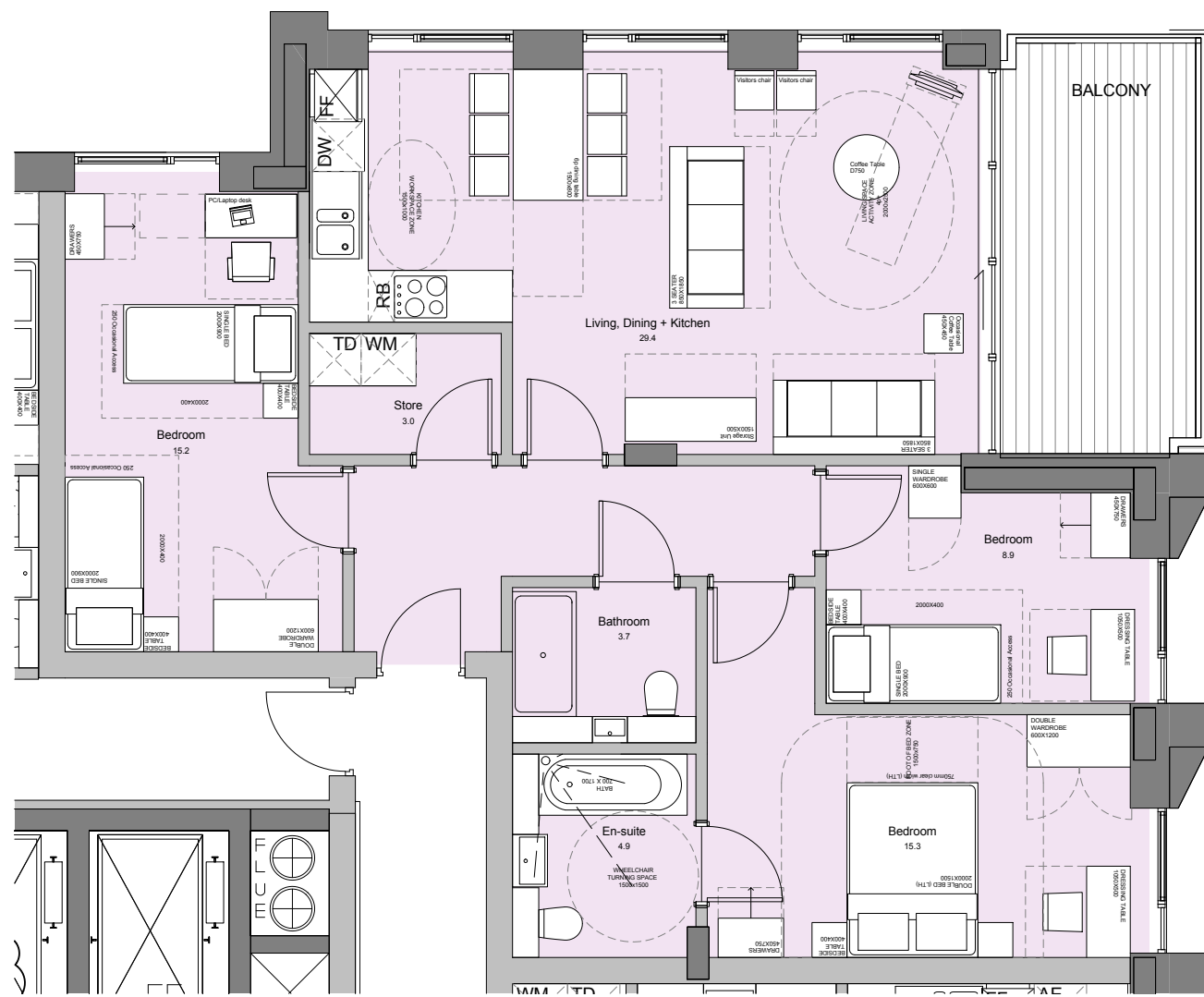
General notes:
 This drawing is copyright of KSR architects. This drawing must be read in conjunction with the Designer's Risk Assessment, specification and all other relevant documentation and drawings. KSR architects accept no liability for any expense, loss or damage of whatsoever nature and however arising from any variation made to this drawing or in the execution of the work to which it relates which has not been referred to them and their approval obtained.
 Do not scale from this drawing or the digital data, only figured dimensions are to be used. For Planning refer to linear scale.
 Check all dimensions on site prior to carrying out any works - advice any discrepancy
 Notes/Legends

Type: P09
 Tenure: Open Market
 1 bed 2 person
 NIA: 52.6 sq.m (566 sq.ft)
 No. of Apartment: 8

Type: P10
 Tenure: Open Market
 3 bed 5 person
 NIA: 92.6 sq.m (997 sq.ft)
 No. of Apartment: 8



APARTMENT TYPE - P09



APARTMENT TYPE - P10



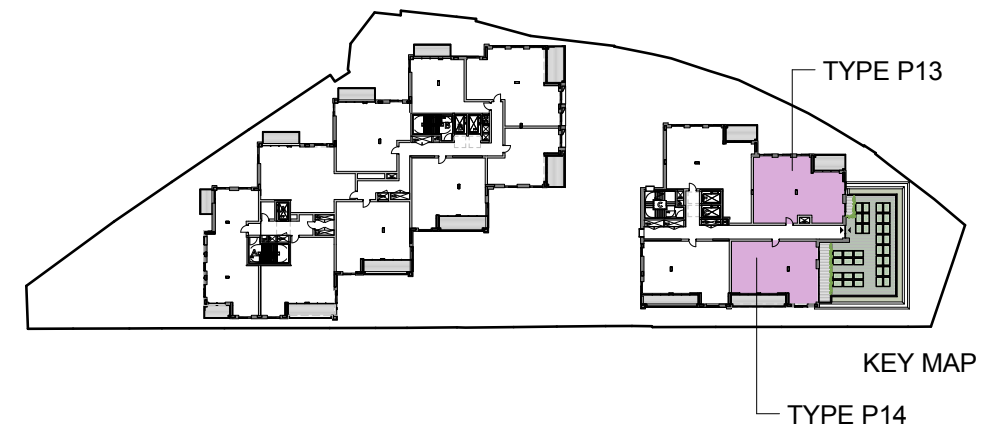
P. 1 Planning Submission 01.07.14 SHY_GJ
 Rev/Notes 06.mm.vj By/CHK
 © KSR architects
 Stamp: **PLANNING SUBMISSION**
 Key Plan:

KSRARCHITECTS
 KSR Architects LLP
 14 Gonsland Street
 London W1H 0ND
 T: +44 (0)20 7882 5000
 www.ksrarchitects.com

Project:
CAMLEY STREET MIXED EMPLOYMENT AND RESIDENTIAL SCHEME

Title:
UNIT PLAN LAYOUT - TYPE P09-P10

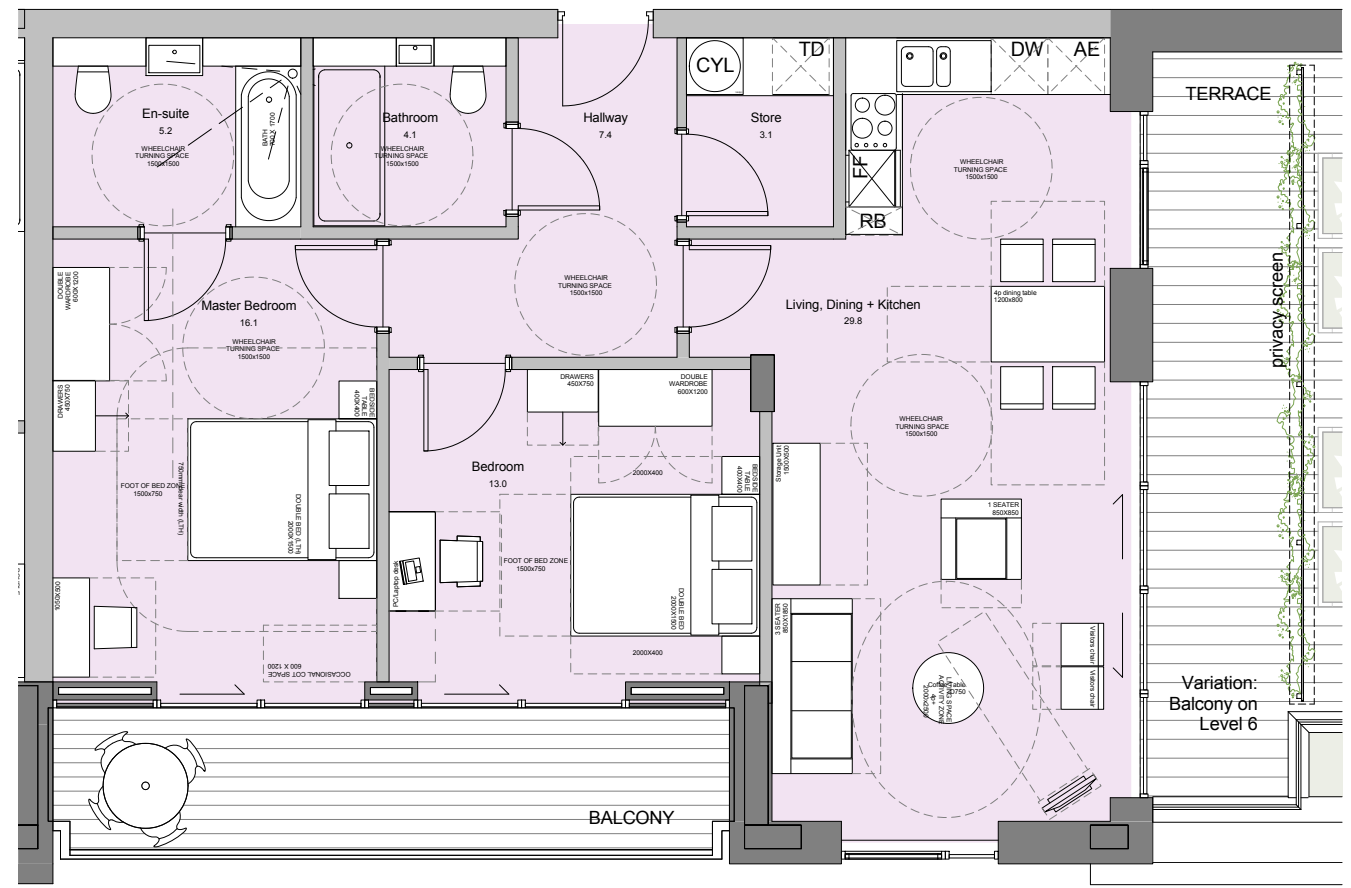
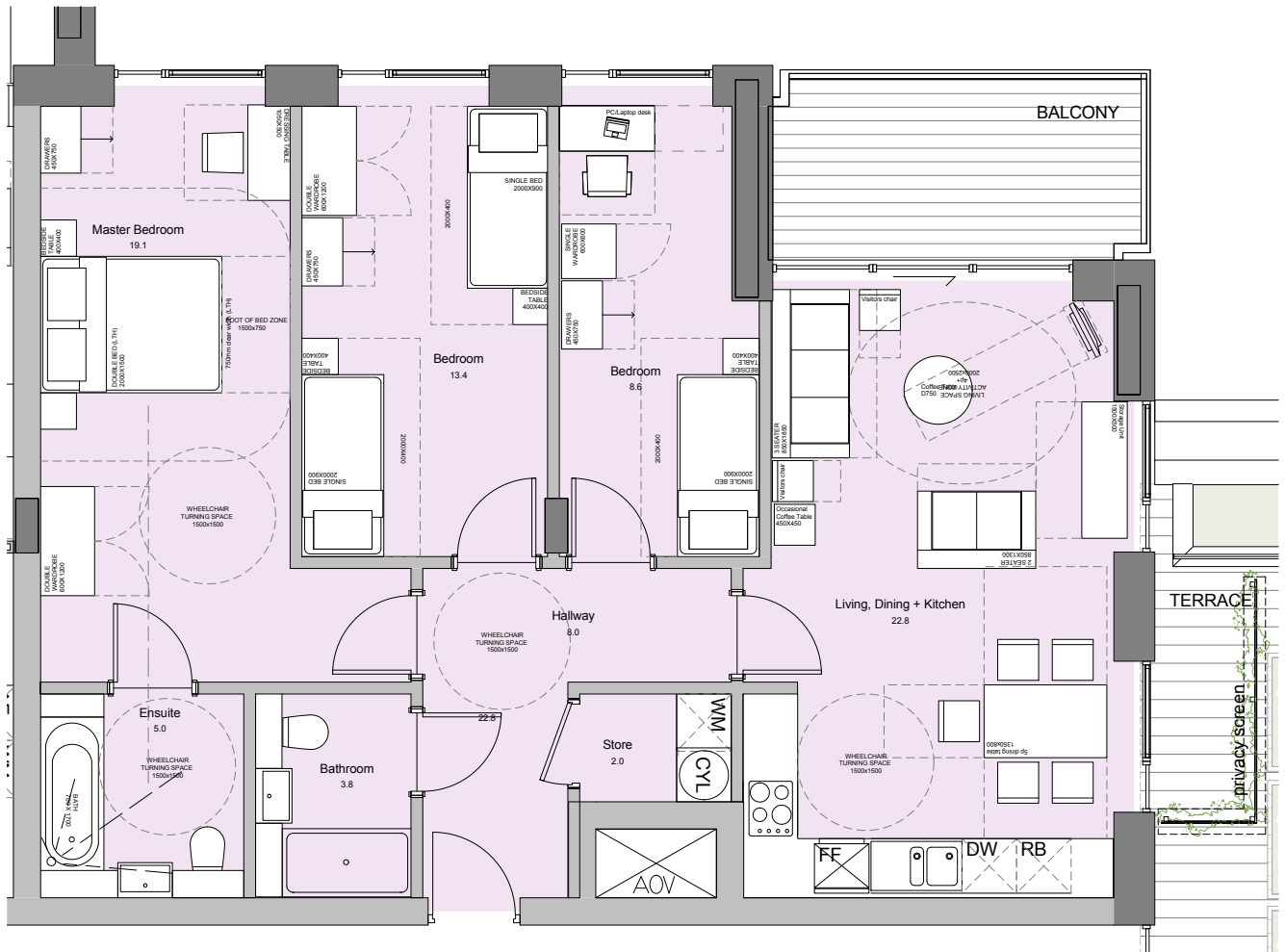
Date: JULY 2014 Drawn By: SHY Checked: GJ
 Scale: As indicated @ A1 / 1:80 @ A3
 Project Ref: CML Drawing No: CML - 124 Revision: P1



General notes:
 This drawing is copyright of KSR architects. This drawing must be read in conjunction with the Designer's Risk Assessment, specification and all other relevant documentation and drawings. KSR architects accept no liability for any expense, loss or damage of whatsoever nature and however arising from any variation made to this drawing or in the execution of the work to which it relates which has not been referred to them and their approval obtained.
 Do not scale from this drawing or the digital data, only figured dimensions are to be used. For Planning refer to linear scale.
 Check all dimensions on site prior to carrying out any works - advise any discrepancy
 Notes/Legends

Type: P13
 Tenure: Open Market
 3 bed 5 person
 NIA: 91.5 sq.m (985 sq.ft)
 No. of Apartment: 1

Type: P14
 Tenure: Open Market
 2 bed 4 person
 NIA: 81.4 sq.m (876 sq.ft)
 No. of Apartment: 4



APARTMENT TYPE - P13

APARTMENT TYPE - P14



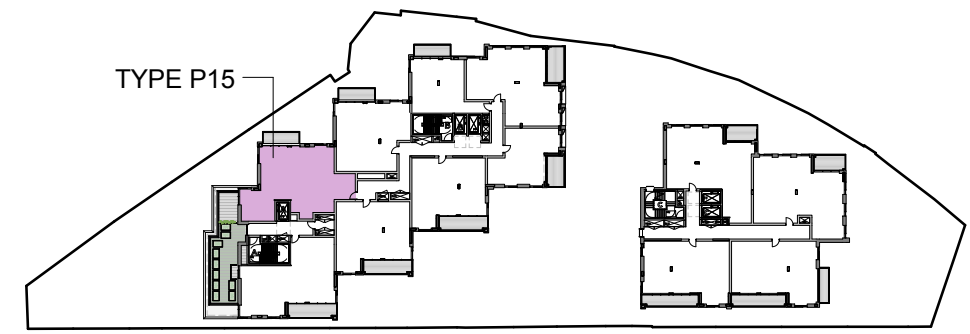
P 1 Planning Submission 01.07.14 SHY GJ
 Rev/ Notes 06 mm vj By/ Chd
 © KSR architects
 Stamp: **PLANNING SUBMISSION**

Key Plan
 Variation: Balcony on Level 6

KSRARCHITECTS
 KSR Architects LLP
 14 Grosvenor Street
 London W1R 0ND
 info@ksrarchitects.com
 t +44 (0)20 7882 5000
 www.ksrarchitects.com

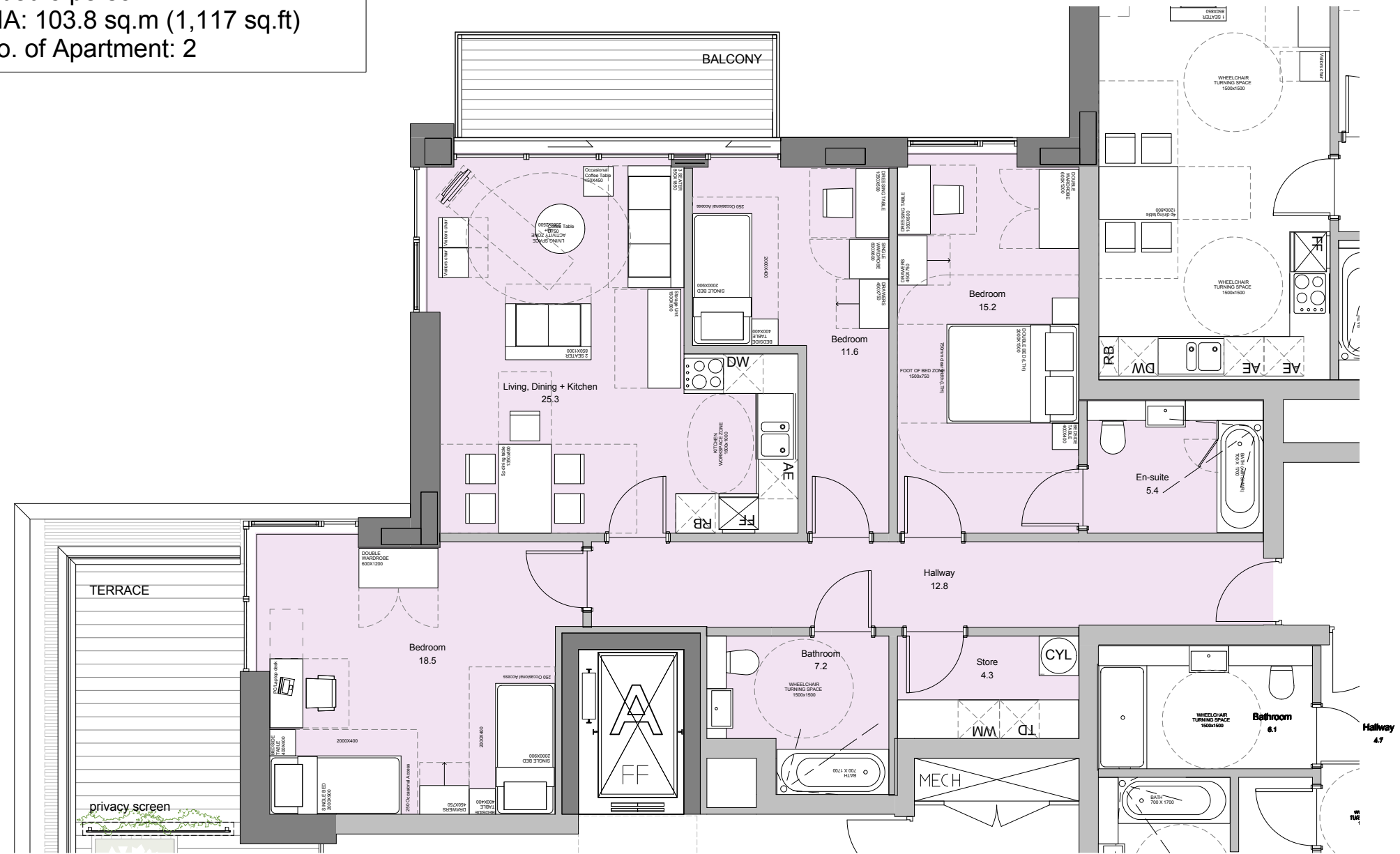
Project:
CAMLEY STREET MIXED EMPLOYMENT AND RESIDENTIAL SCHEME
 Title:
UNIT PLAN LAYOUT - TYPE P13-P14

Date: JULY 2014	Drawn By: SHY	Checked: GJ
Scale: As indicated @ A1 / 1:80 @ A3	Project Ref: CML	Drawing No: CML - 126
		Revision: P1



KEY MAP

Type: P15
 Tenure: Open Market
 3 bed 5 person
 NIA: 103.8 sq.m (1,117 sq.ft)
 No. of Apartment: 2



APARTMENT TYPE - P15



General notes:
 This drawing is copyright of KSR architects. This drawing must be read in conjunction with the Designer's Risk Assessment, specification and all other relevant documentation and drawings. KSR architects accept no liability for any expense, loss or damage of whatsoever nature and however arising from any variation made to this drawing or in the execution of the work to which it relates which has not been referred to them and their approval obtained.
 Do not scale from this drawing or the digital data, only figured dimensions are to be used. For Planning refer to linear scale.
 Check all dimensions on site prior to carrying out any works - advise any discrepancy

P. 1 Planning Submission	01.07.14 SHY GJ
Rev/ Notes	06.mm.vj By/ Chkd

© KSR architects
 Stamp: **PLANNING SUBMISSION**

Key Plan

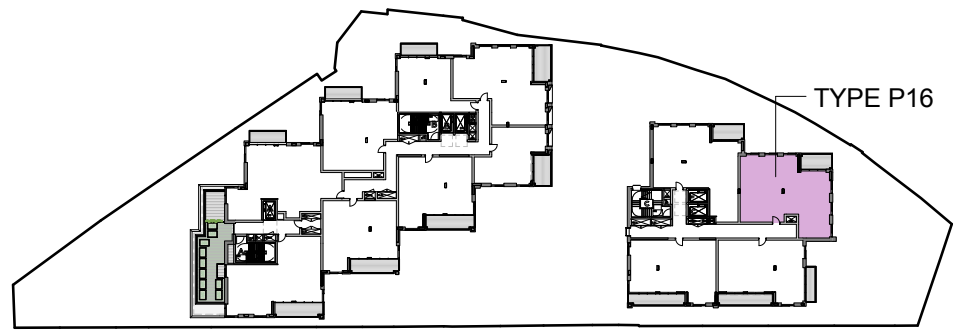
KSRARCHITECTS
 KSR Architects LLP
 14 Grosvenor Street
 London W1R 0ND
 info@ksrarchitects.com
 t +44 (0)20 7882 5000
 www.ksrarchitects.com

Project:
CAMLEY STREET MIXED EMPLOYMENT AND RESIDENTIAL SCHEME

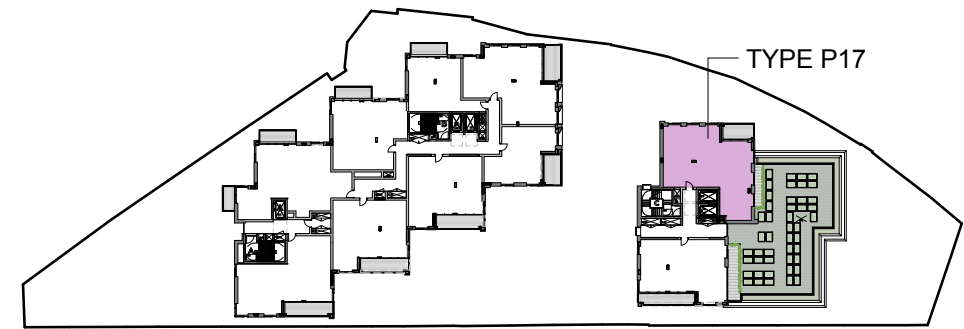
Title:
UNIT PLAN LAYOUT - TYPE P15

Date: JULY 2014	Drawn By: SHY	Checked: GJ
Scale: As indicated @ A1 / 1:80 @ A3		

Project Ref: CML	Drawing No: CML - 127	Revision: P1
------------------	-----------------------	--------------



KEY MAP



KEY MAP

Type: P16
 Tenure: Open Market
 3 bed 5 person
 NIA: 100.0 sq.m (1,077 sq.ft)
 No. of Apartment: 1

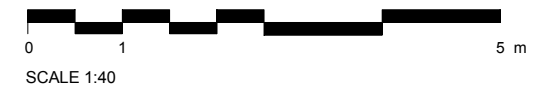


APARTMENT TYPE - P16

Type: P17
 Tenure: Open Market
 3 bed 5 person
 NIA: 102.2 sq.m (1,100 sq.ft)
 No. of Apartment: 2



APARTMENT TYPE - P17



General notes:
 This drawing is copyright of KSR architects. This drawing must be read in conjunction with the Designer's Risk Assessment, specification and all other relevant documentation and drawings. KSR architects accept no liability for any expense, loss or damage of whatsoever nature and however arising from any variation made to this drawing or in the execution of the work to which it relates which has not been referred to them and their approval obtained.
 Do not scale from this drawing or the digital data, only figured dimensions are to be used. For Planning refer to linear scale.
 Check all dimensions on site prior to carrying out any works - advise any discrepancy
 Notes/Legends

P: 1 Planning Submission 01.07.14 SHY GJ
 Rev: Notes 06.mm.yj By: CML

© KSR architects
 Stamp: **PLANNING SUBMISSION**

Key Plan

KSRARCHITECTS
 KSR Architects LLP
 14 Gower Street
 London WC1E 6BT
 T: +44 (0)20 7882 5000
 E: info@ksrarchitects.com
 www.ksrarchitects.com

Project:
CAMLEY STREET MIXED EMPLOYMENT AND RESIDENTIAL SCHEME

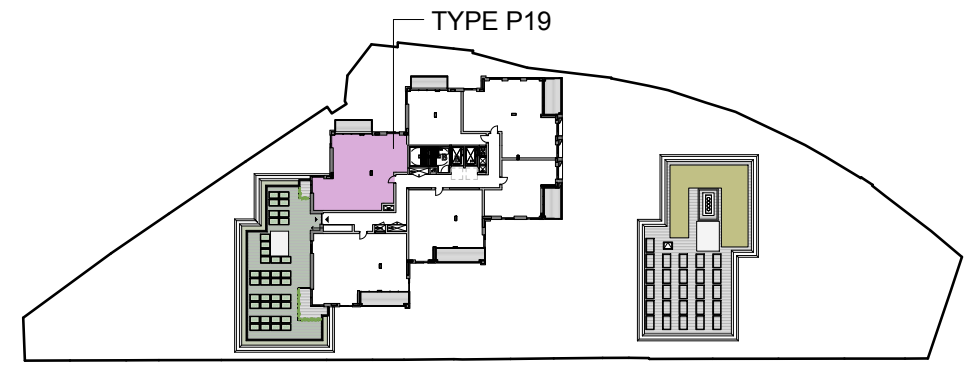
Title:
UNIT PLAN LAYOUT - TYPE P16-P17

Date: JULY 2014 Drawn By: SHY Checked: GJ

Scale: As indicated @ A1 / 1:80 @ A3
 Project Ref: Drawing No: Revision:
 CML CML - 128 P1

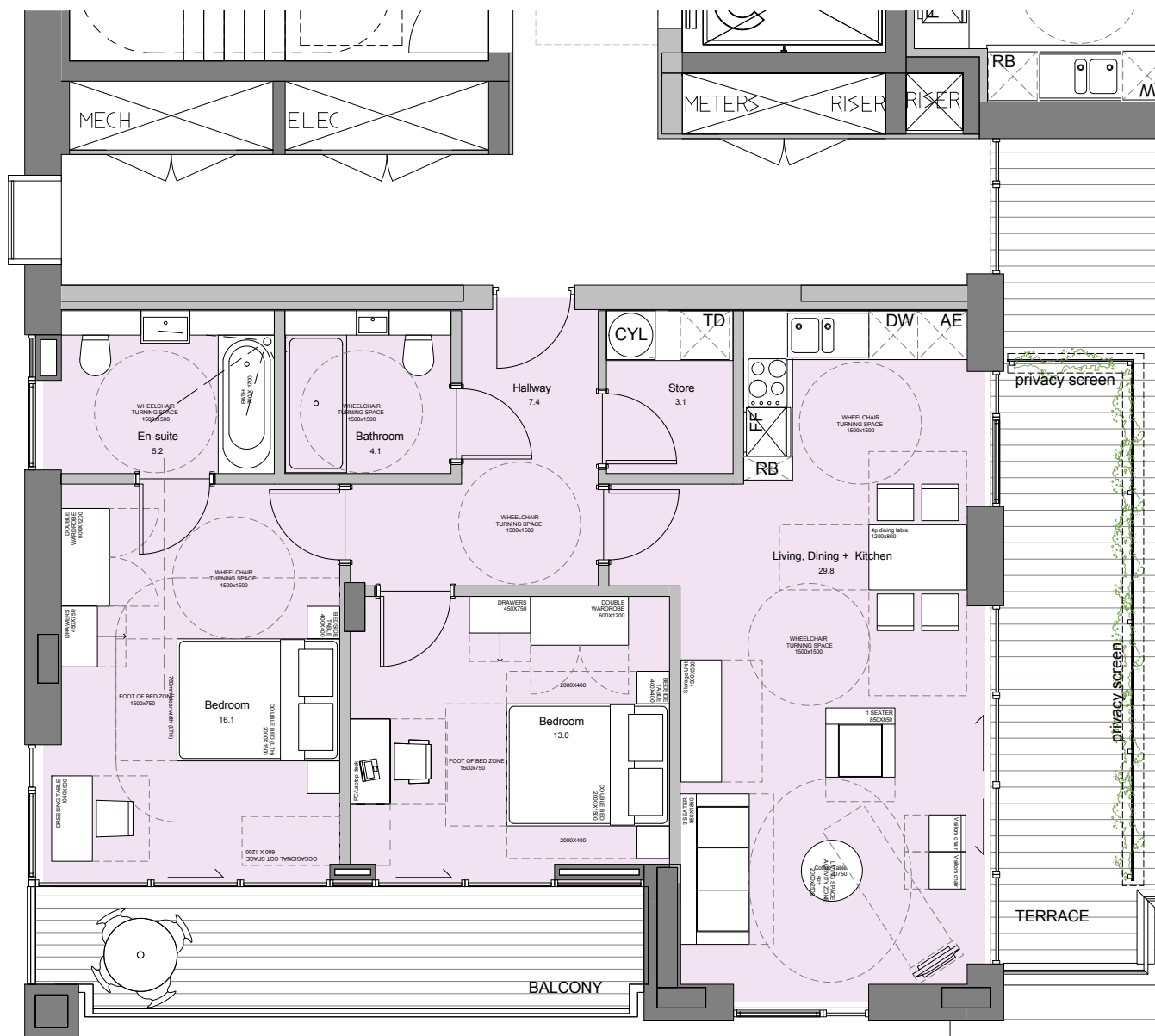


KEY MAP



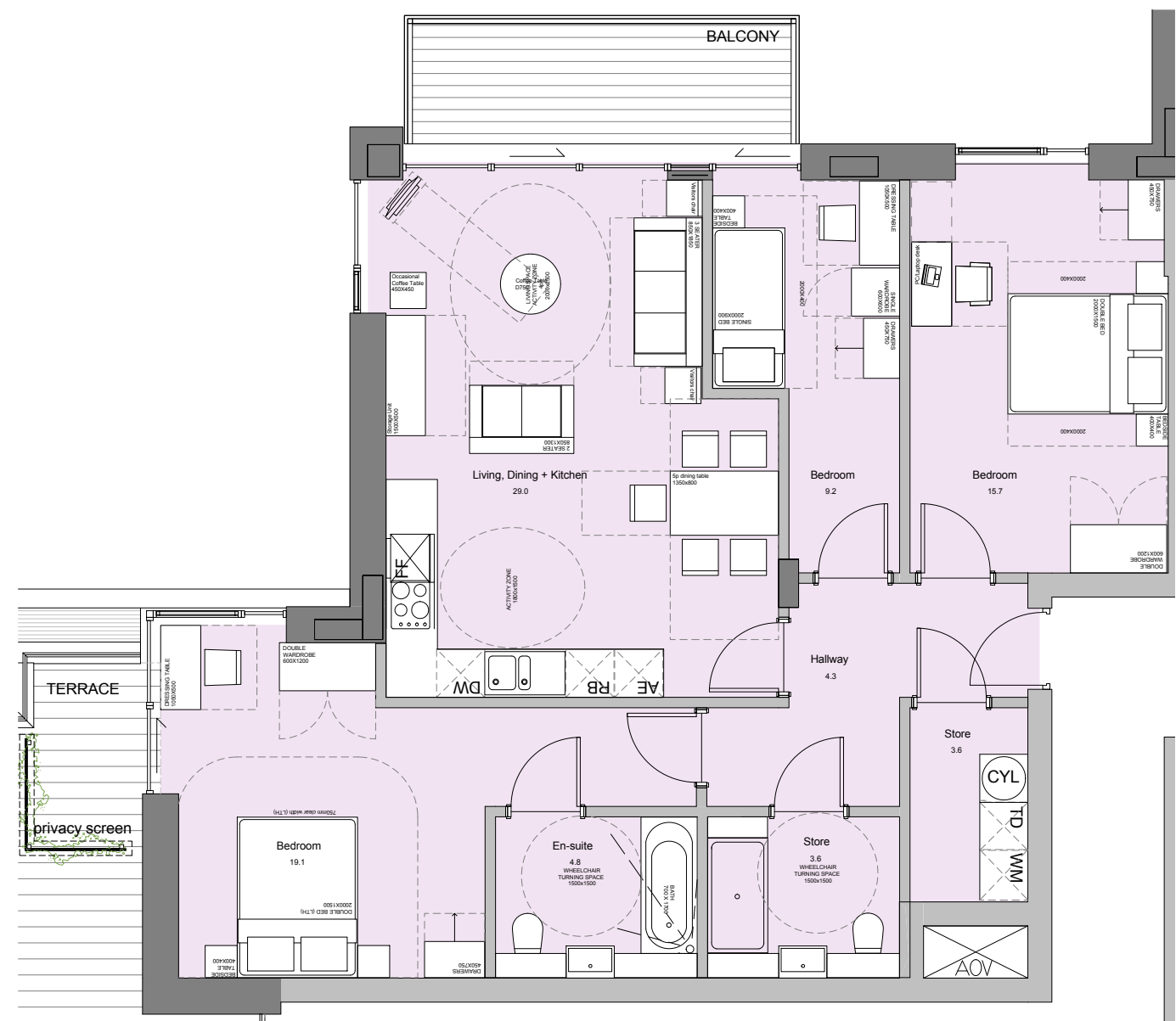
KEY MAP

Type: P18
 Tenure: Open Market
 2 bed 4 person
 NIA: 80.9 sq.m (871 sq.ft)
 No. of Apartment: 2



APARTMENT TYPE - P18

Type: P19
 Tenure: Open Market
 3 bed 5 person
 NIA: 97.2 sq.m (1,047 sq.ft)
 No. of Apartment: 2



APARTMENT TYPE - P19



General notes:
 This drawing is copyright of KSR architects. This drawing must be read in conjunction with the Designer's Risk Assessment, specification and all other relevant documentation and drawings. KSR architects accept no liability for any expense, loss or damage of whatsoever nature and however arising from any variation made to this drawing or in the execution of the work to which it relates which has not been referred to them and their approval obtained.
 Do not scale from this drawing or the digital data, only figured dimensions are to be used. For Planning refer to linear scale.
 Check all dimensions on site prior to carrying out any works - advise any discrepancy
 Notes/Legends

P. 1 Planning Submission 01.07.14 SHY GJ
 Rev Notes 06 mm yj By Chd

Stamp: **PLANNING SUBMISSION**

Key Plan

KSRARCHITECTS
 KSR Architects LLP
 14 Goswell Street
 London EC1M 6DD
 Tel: +44 (0)20 7882 9000
 Email: info@ksrarchitects.com
 Website: www.ksrarchitects.com

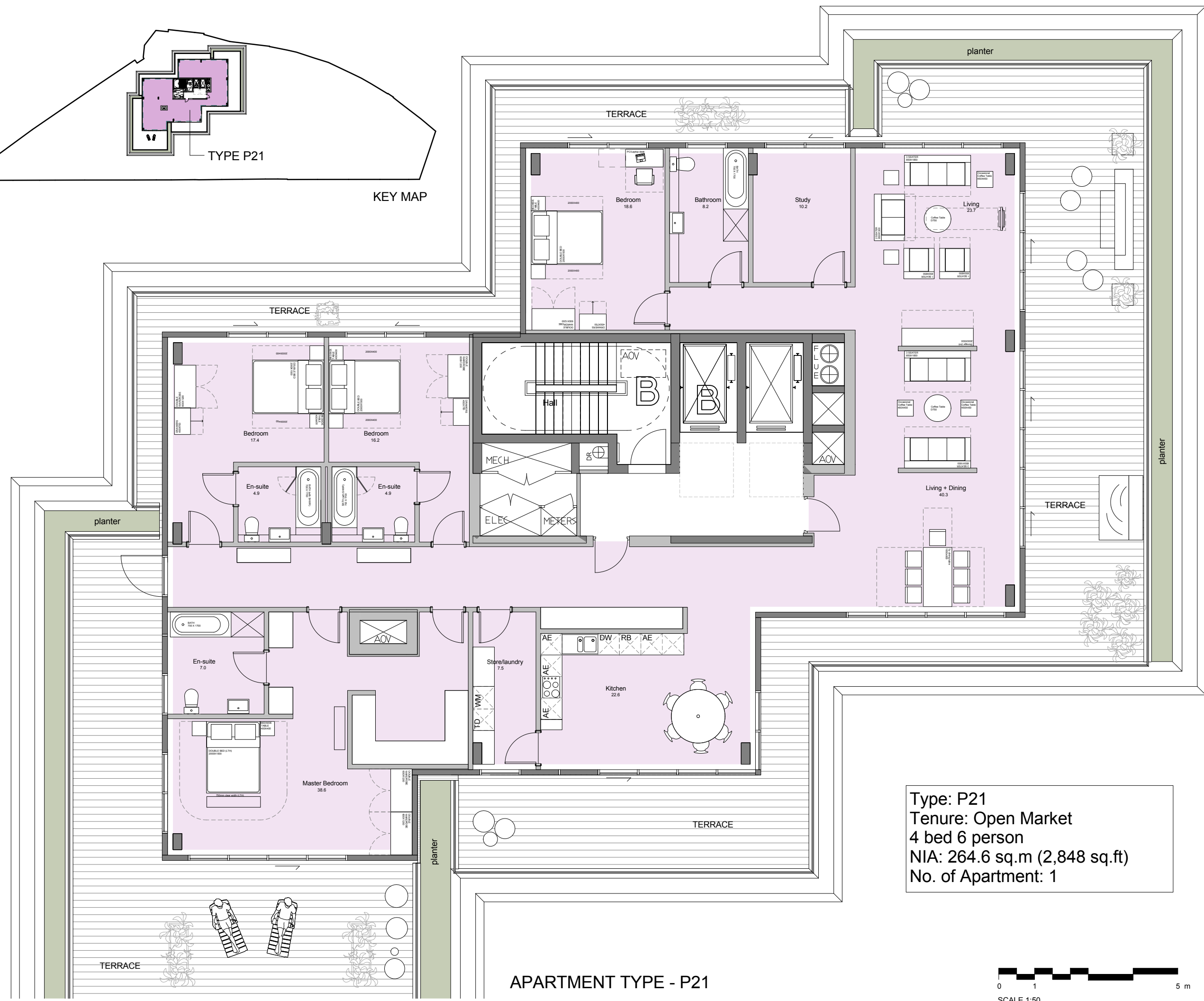
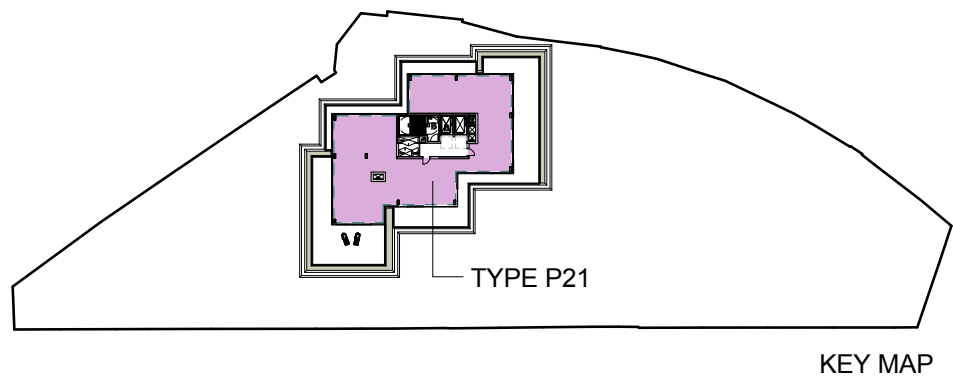
Project: **CAMLEY STREET MIXED EMPLOYMENT AND RESIDENTIAL SCHEME**

Title: **UNIT PLAN LAYOUT - TYPE P18-P19**

Date: JULY 2014 Drawn By: SHY Checked: GJ

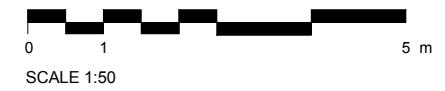
Scale: As indicated @ A1 / 1:80 @ A3

Project Ref: CML Drawing No: CML - 129 Revision: P1



Type: P21
 Tenure: Open Market
 4 bed 6 person
 NIA: 264.6 sq.m (2,848 sq.ft)
 No. of Apartment: 1

APARTMENT TYPE - P21



General notes:
 This drawing is copyright of KSR architects. This drawing must be read in conjunction with the Designer's Risk Assessment, specification and all other relevant documentation and drawings. KSR architects accept no liability for any expense, loss or damage of whatsoever nature and however arising from any variation made to this drawing or in the execution of the work to which it relates which has not been referred to them and their approval obtained.
 Do not scale from this drawing or the digital data, only figured dimensions are to be used. For Planning refer to linear scale.
 Check all dimensions on site prior to carrying out any works - advise any discrepancy

P: 1 Planning Submission 01.07.14 SHY_GJ
 Rev/ Notes 06 mm x1 By/ Chkd

© KSR architects
 Stamp: **PLANNING SUBMISSION**

Key Plan

KSRARCHITECTS
 KSR Architects LLP
 14 Grosvenor Street
 London W1R 0ND
 info@ksrarchitects.com
 t +44 (0)20 7882 5000
 www.ksrarchitects.com

Project:
CAMLEY STREET MIXED EMPLOYMENT AND RESIDENTIAL SCHEME

Title:
UNIT PLAN LAYOUT - TYPE P21

Date: JULY 2014 Drawn By: SHY Checked: GJ

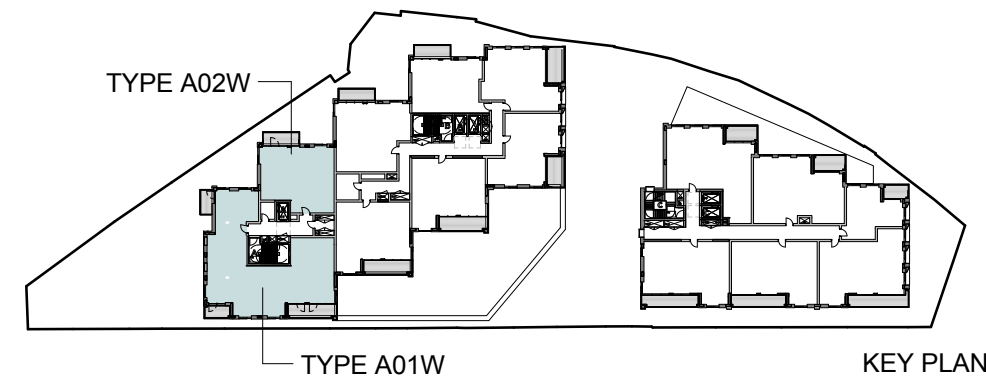
Scale: As indicated @ A1 / 1:100 @ A3

Project Ref:	Drawing No:	Revision:
CML	CML - 131	P1

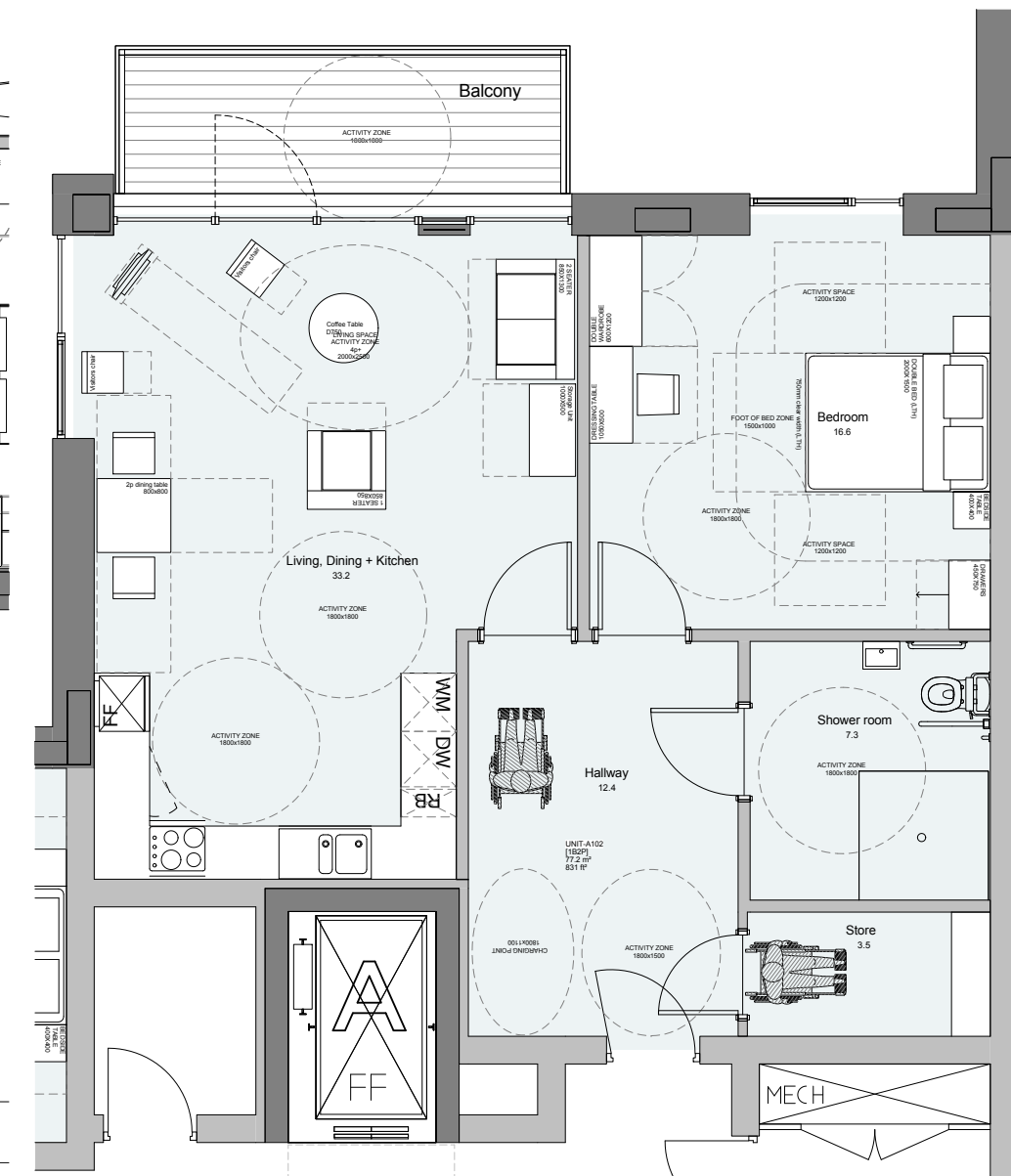
Type: A01W
 Tenure: Affordable Rent (wheelchair accessible unit)
 4 bed 6 person
 NIA: 165.4 sq.m (1,780 sq.ft)
 No. of Apartment: 2



APARTMENT TYPE - A01W



Type: A02W
 Tenure: Affordable Rent (wheelchair accessible unit)
 1 bed 2 person
 NIA: 77.2 sq.m (831 sq.ft)
 No. of Apartment: 2

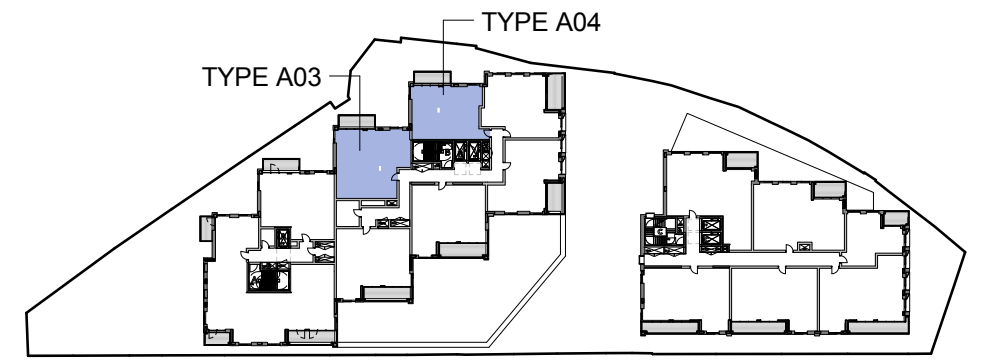


APARTMENT TYPE - A02W



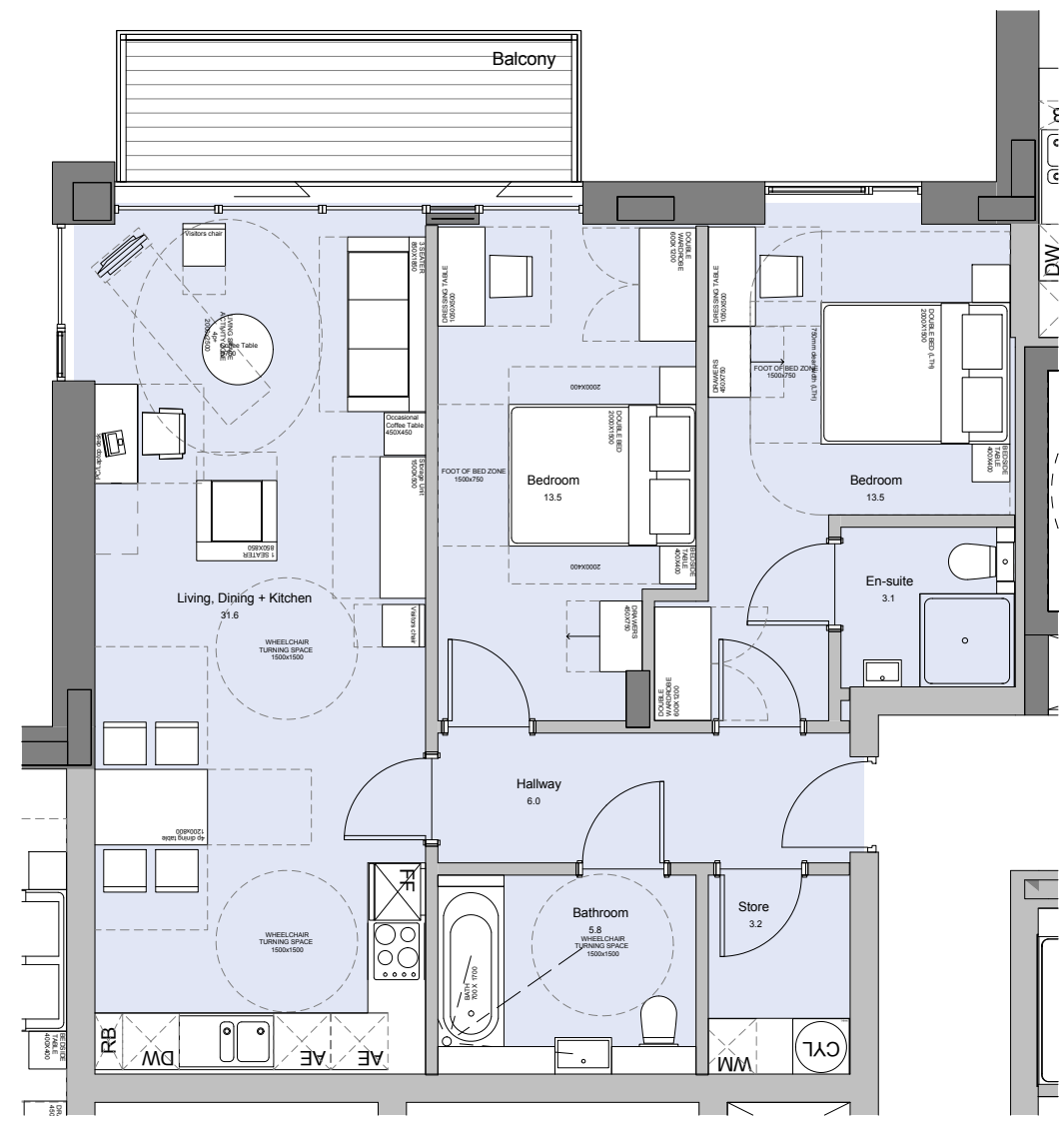
General notes:
 This drawing is copyright of KSR architects. This drawing must be read in conjunction with the Designer's Risk Assessment, specification and all other relevant documentation and drawings. KSR architects accept no liability for any expense, loss or damage of whatsoever nature and however arising from any variation made to this drawing or in the execution of the work to which it relates which has not been referred to them and their approval obtained.
 Do not scale from this drawing or the digital data, only figured dimensions are to be used. For Planning refer to linear scale.
 Check all dimensions on site prior to carrying out any works - advise any discrepancy
 Notes/Legends

P: 1 Planning Submission	01.07.14 SHY_GJ
Rev: Notes	06 mm yj By: CML
© KSR architects	
Stamp:	PLANNING SUBMISSION
Key Plan:	
KSRARCHITECTS	
KSR Architects LLP 14 Gower Street London WC1E 6BT Tel: +44 (0)20 7882 5000 www.ksrarchitects.com	
Project: CAMLEY STREET MIXED EMPLOYMENT AND RESIDENTIAL SCHEME	
Title: UNIT PLAN LAYOUT - TYPE A01-A02	
Date: JULY 2014	Drawn By: SHY
Scale: As indicated @ A1 / 1:80 @ A3	Checked: GJ
Project Ref: CML	Drawing No: CML - 132
	Revision: P1



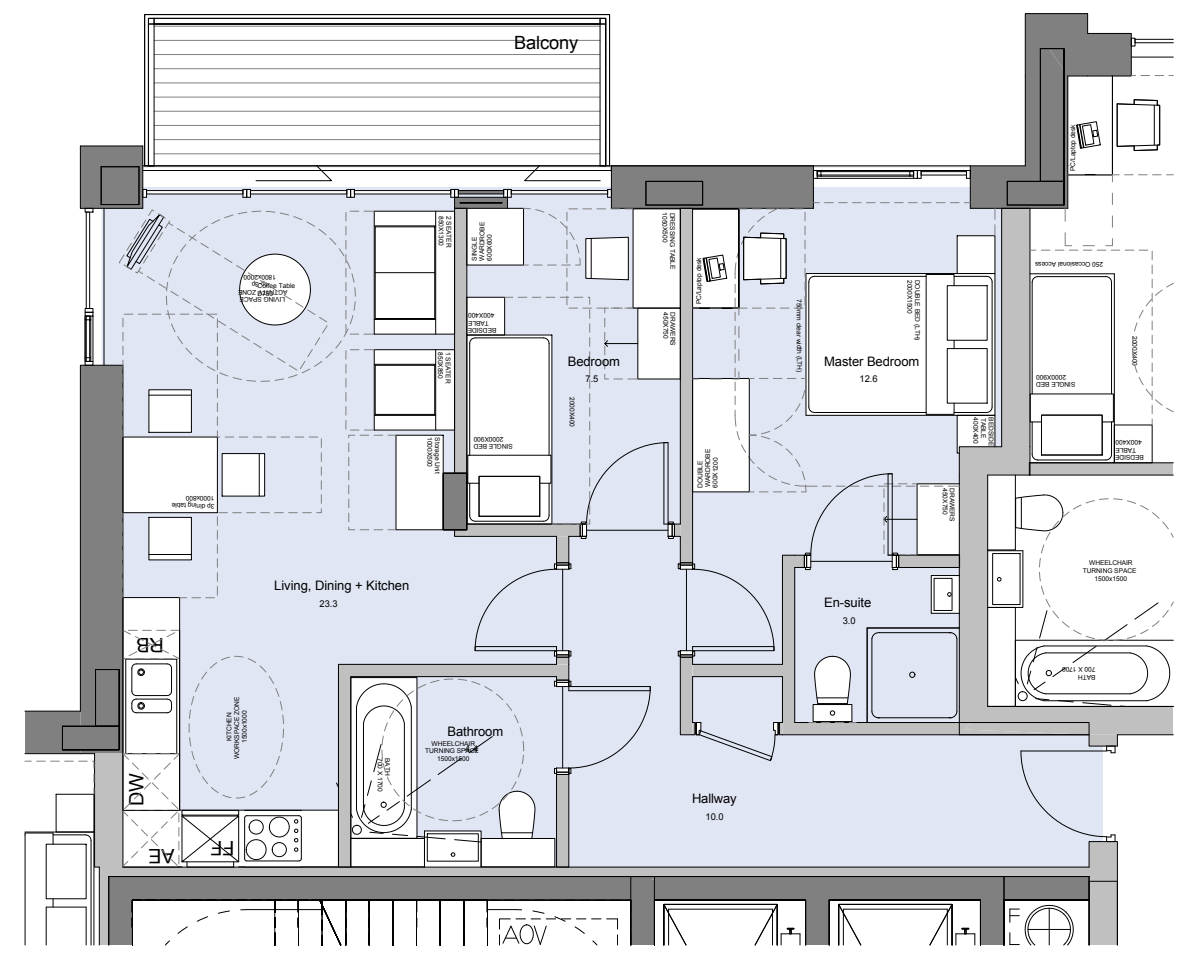
KEY MAP

Type: A03
 Tenure: Intermediate/shared ownership
 2 bed 4 person
 NIA: 80.4 sq.m (865 sq.ft)
 No. of Apartment: 3



APARTMENT TYPE - A03

Type: A04
 Tenure: Intermediate/shared ownership
 2 bed 3 person
 NIA: 64.6 sq.m (695 sq.ft)
 No. of Apartment: 3

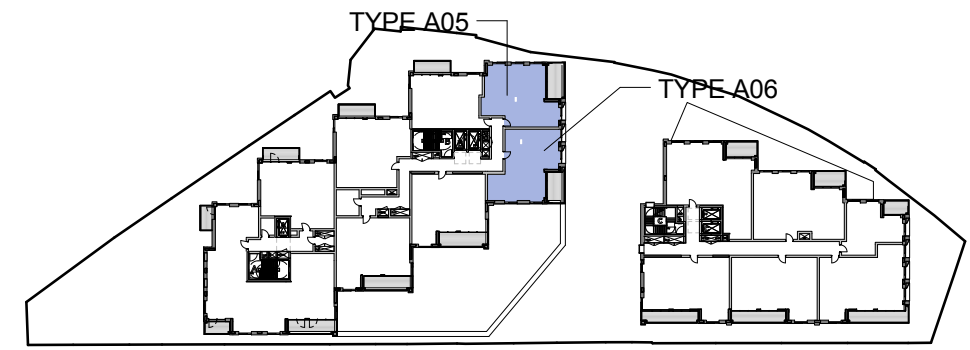


APARTMENT TYPE - A04



General notes:
 This drawing is copyright of KSR architects. This drawing must be read in conjunction with the Designer's Risk Assessment, specification and all other relevant documentation and drawings. KSR architects accept no liability for any expense, loss or damage of whatsoever nature and however arising from any variation made to this drawing or in the execution of the work to which it relates which has not been referred to them and their approval obtained.
 Do not scale from this drawing or the digital data, only figured dimensions are to be used. For Planning refer to linear scale.
 Check all dimensions on site prior to carrying out any works - advise any discrepancy
 Notes/Legends

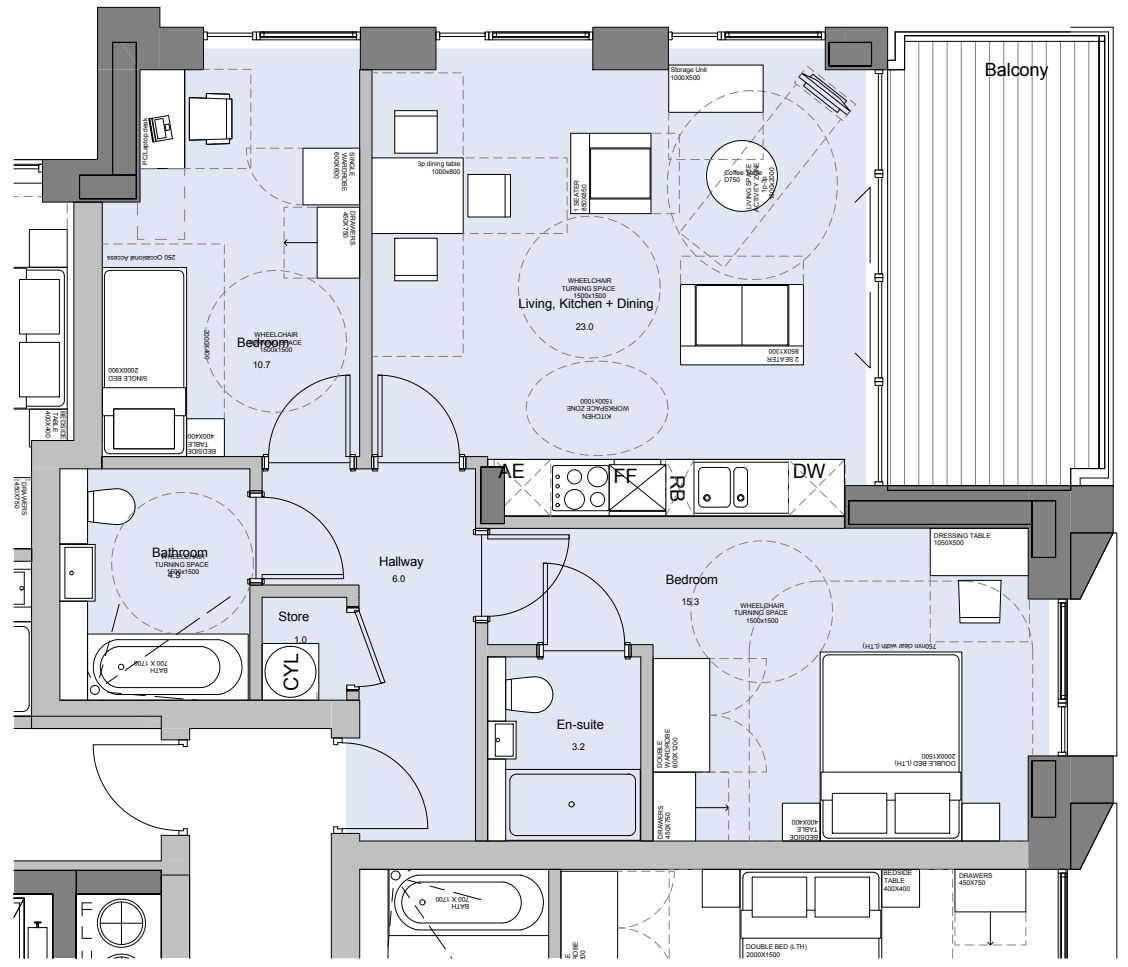
P. 1 Planning Submission	01.07.14 SHY_GJ
Rev/Notes	06.mm.vj By Chkd
© KSR architects	
Stamp	PLANNING SUBMISSION
Key Plan	
KSRARCHITECTS <small>KSR Architects LLP 14 Grosvenor Street London W1R 0ND T +44 (0)20 7882 5000 www.ksararchitects.com</small>	
Project: CAMLEY STREET MIXED EMPLOYMENT AND RESIDENTIAL SCHEME	
Title: UNIT PLAN LAYOUT - TYPE A03-A04	
Date: JULY 2014	Drawn By: SHY Checked: GJ
Scale: As indicated @ A1 / 1:80 @ A3	
Project Ref: CML	Drawing No: CML - 133
Revision: P1	



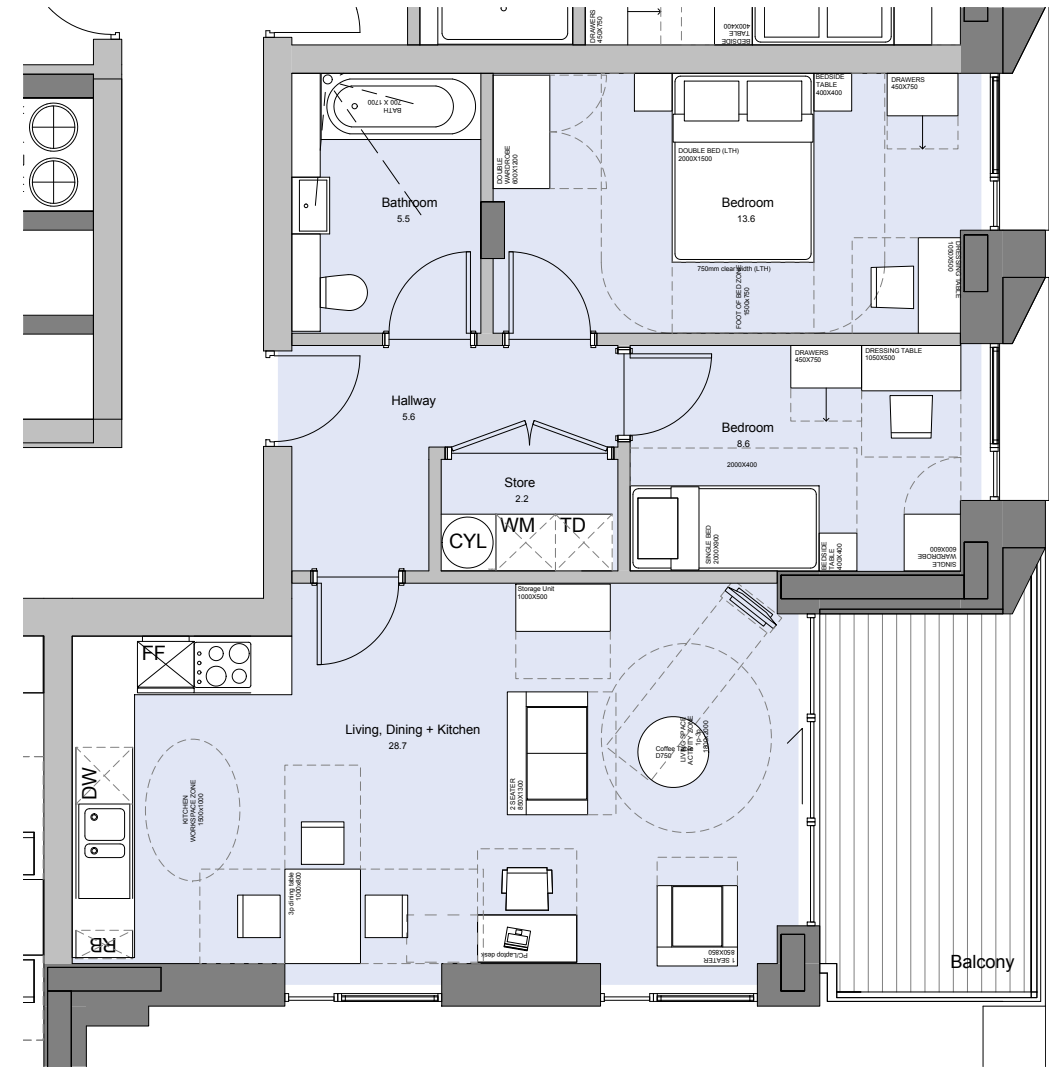
KEY MAP

Type: A05
 Tenure: Intermediate/shared ownership
 2 bed 3 person
 NIA: 66.9 sq.m (720 sq.ft)
 No. of Apartment: 3

Type: A06
 Tenure: Intermediate/shared ownership
 2 bed 3 person
 NIA: 66.5 sq.m (716 sq.ft)
 No. of Apartment: 3



APARTMENT TYPE - A05

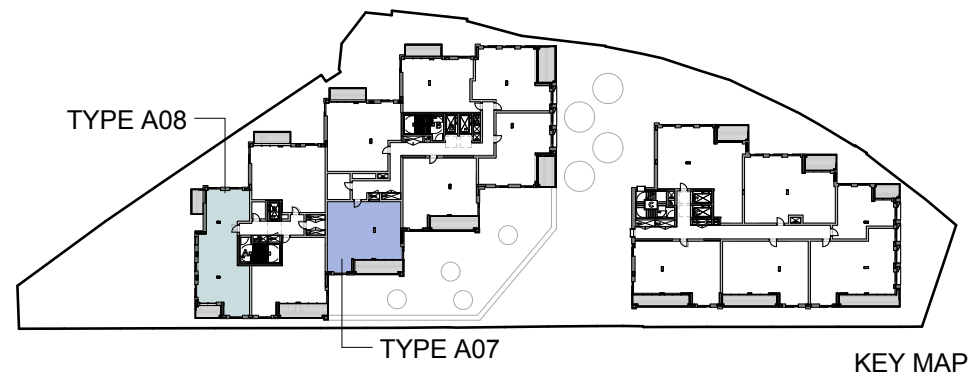


APARTMENT TYPE - A06

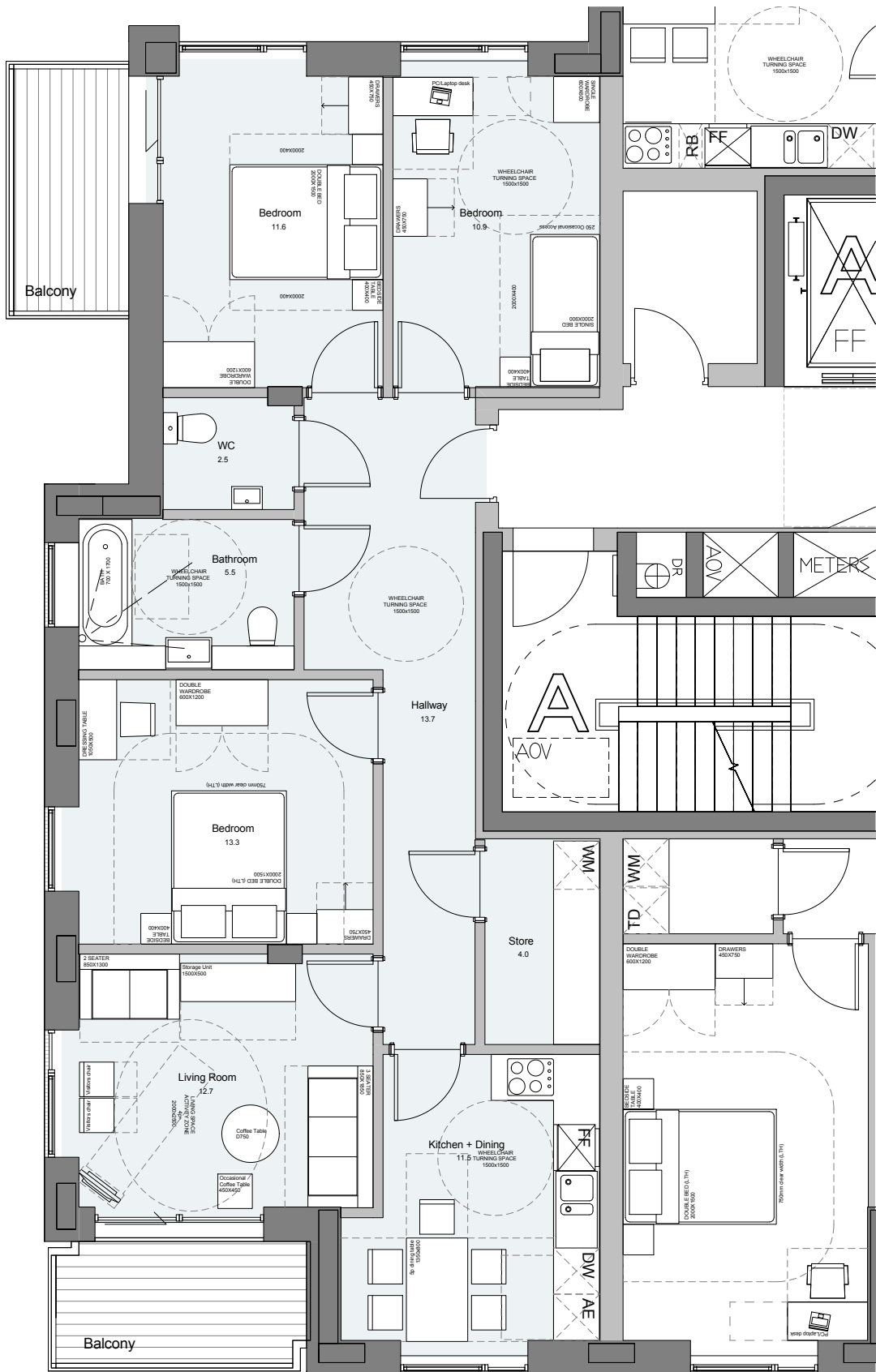


General notes:
 This drawing is copyright of KSR architects. This drawing must be read in conjunction with the Designer's Risk Assessment, specification and all other relevant documentation and drawings. KSR architects accept no liability for any expense, loss or damage of whatsoever nature and however arising from any variation made to this drawing or in the execution of the work to which it relates which has not been referred to them and their approval obtained.
 Do not scale from this drawing or the digital data, only figured dimensions are to be used. For Planning refer to linear scale.
 Check all dimensions on site prior to carrying out any works - advise any discrepancy
 Notes/Legends

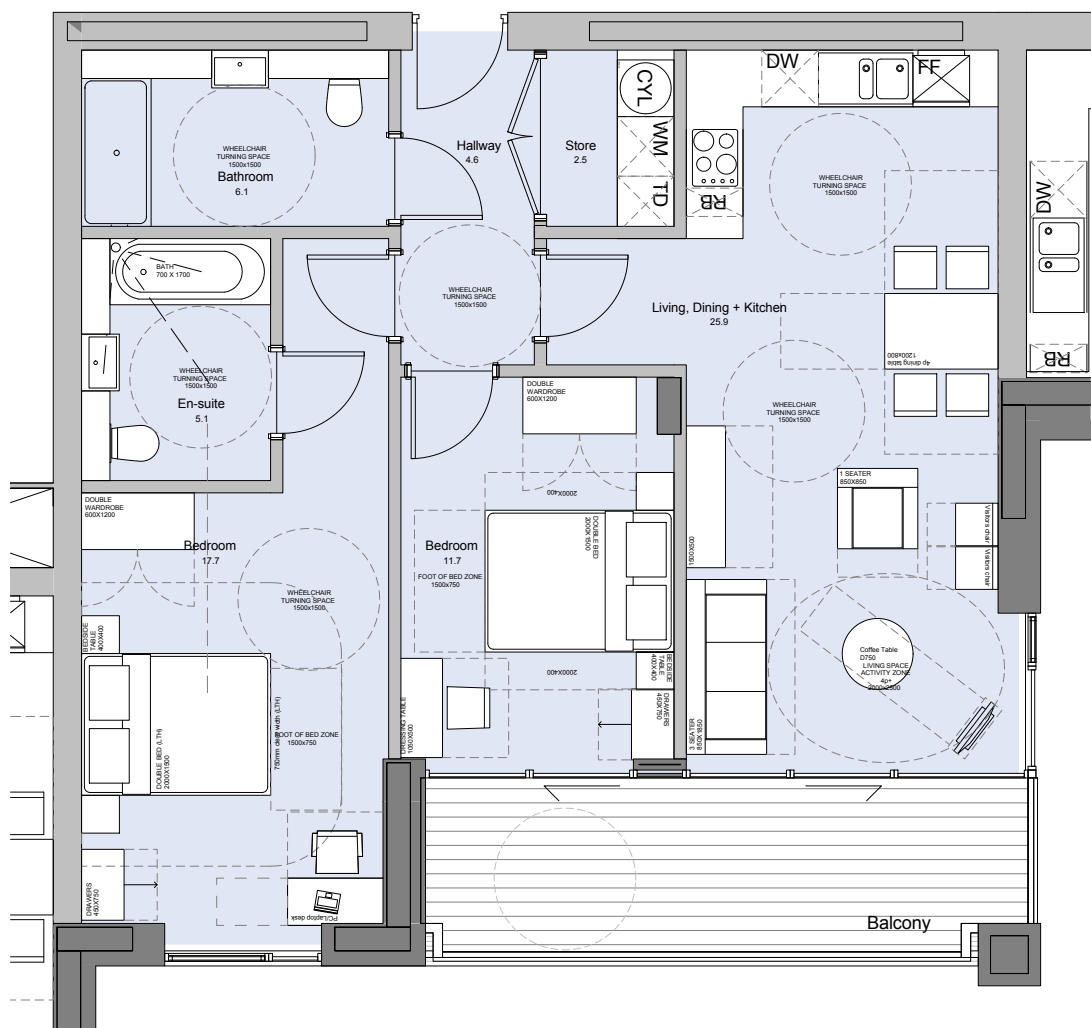
P. 1 Planning Submission	01.07.14 SHY_GJ
Rev/Notes	06 mm.vj By/Chd
© KSR architects	
Stamp	PLANNING SUBMISSION
Key Plan	
KSRARCHITECTS	
KSR Architects LLP 14 Grosvenor Street London W1R 0ND Tel: +44 (0)20 7882 5000 Email: info@ksrarchitects.com Website: www.ksrarchitects.com	
Project: CAMLEY STREET MIXED EMPLOYMENT AND RESIDENTIAL SCHEME	
Title: UNIT PLAN LAYOUT - TYPE A05-A06	
Date: JULY 2014	Drawn By: SHY
Scale: As indicated @ A1 / 1:80 @ A3	Checked: GJ
Project Ref: CML	Revision: P1
Drawing No: CML - 134	



Type: A08
 Tenure: Affordable Rent
 3 bed 5 person
 NIA: 90.1 sq.m (969 sq.ft)
 No. of Apartment: 4



Type: A07
 Tenure: Intermediate/shared ownership
 2 bed 4 person
 NIA: 78.2 sq.m (841 sq.ft)
 No. of Apartment: 4



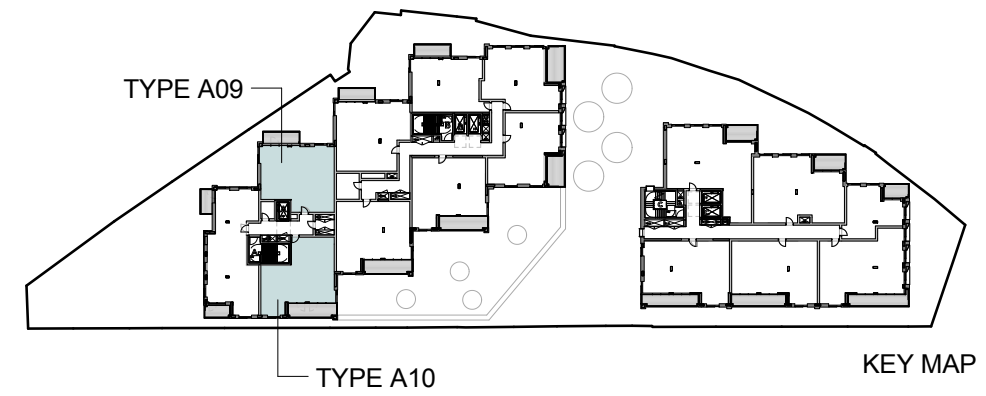
APARTMENT TYPE - A07

APARTMENT TYPE - A08



General notes:
 This drawing is copyright of KSR architects. This drawing must be read in conjunction with the Designer's Risk Assessment, specification and all other relevant documentation and drawings. KSR architects accept no liability for any expense, loss or damage of whatsoever nature and however arising from any variation made to this drawing or in the execution of the work to which it relates which has not been referred to them and their approval obtained.
 Do not scale from this drawing or the digital data, only figured dimensions are to be used. For Planning refer to linear scale.
 Check all dimensions on site prior to carrying out any works - advise any discrepancy
 Notes/Legends

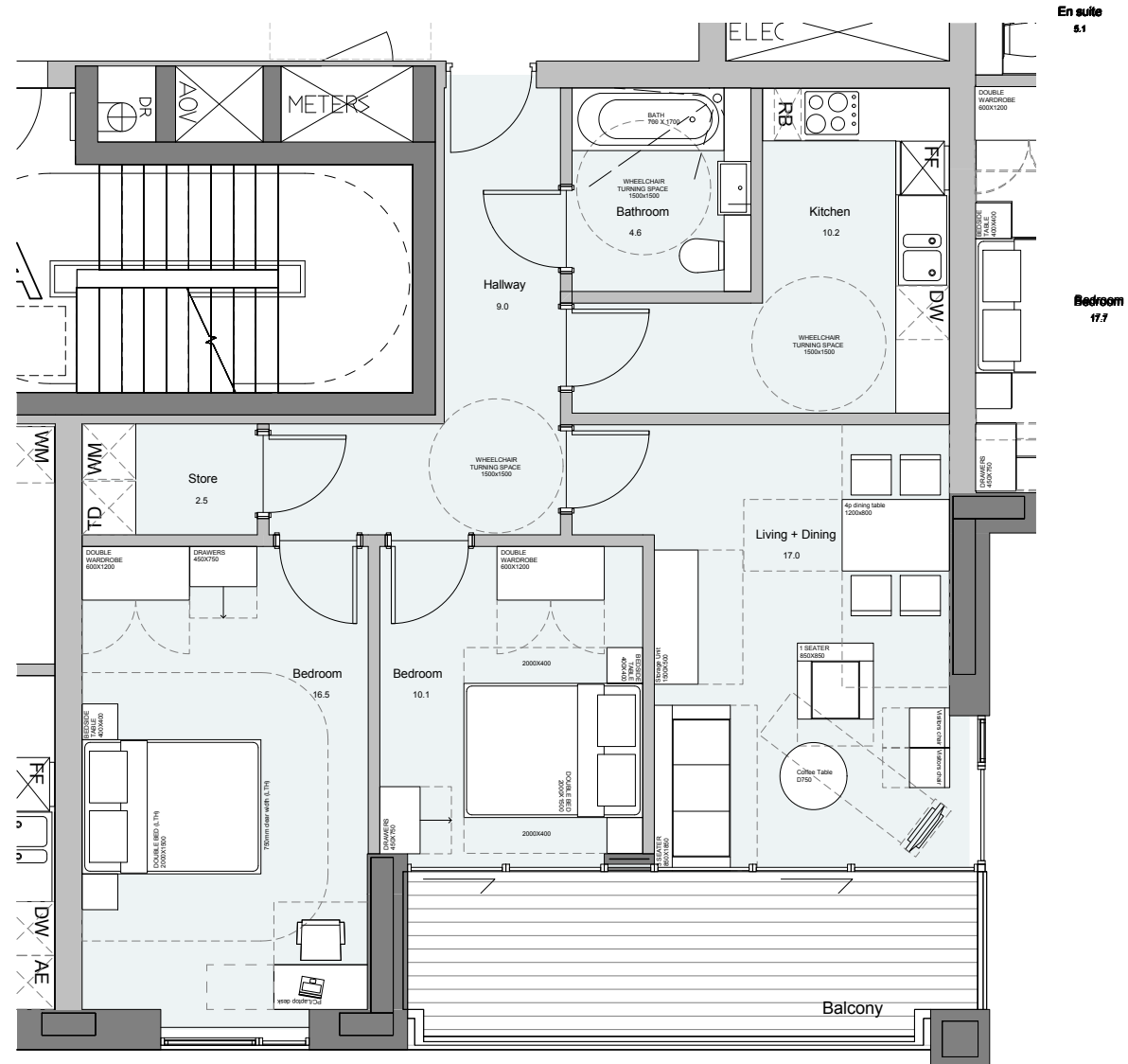
P. 1 Planning Submission	01.07.14 SHY_GJ
Rev/Notes	06 mm.plj By/CHK
© KSR architects	
Stamp	PLANNING SUBMISSION
Key Plan	
KSRARCHITECTS	
KSR Architects LLP 14 Garsfield Street London W1R 0ND t +44 (0)20 7882 5000 m info@ksrarchitects.com www.ksrarchitects.com	
Project: CAMLEY STREET MIXED EMPLOYMENT AND RESIDENTIAL SCHEME	
Title: UNIT PLAN LAYOUT - TYPE A07-A08	
Date: JULY 2014	Drawn By: SHY
Scale: As indicated @ A1 / 1:80 @ A3	
Project Ref: CML	Drawing No: CML - 135
Revision: P1	



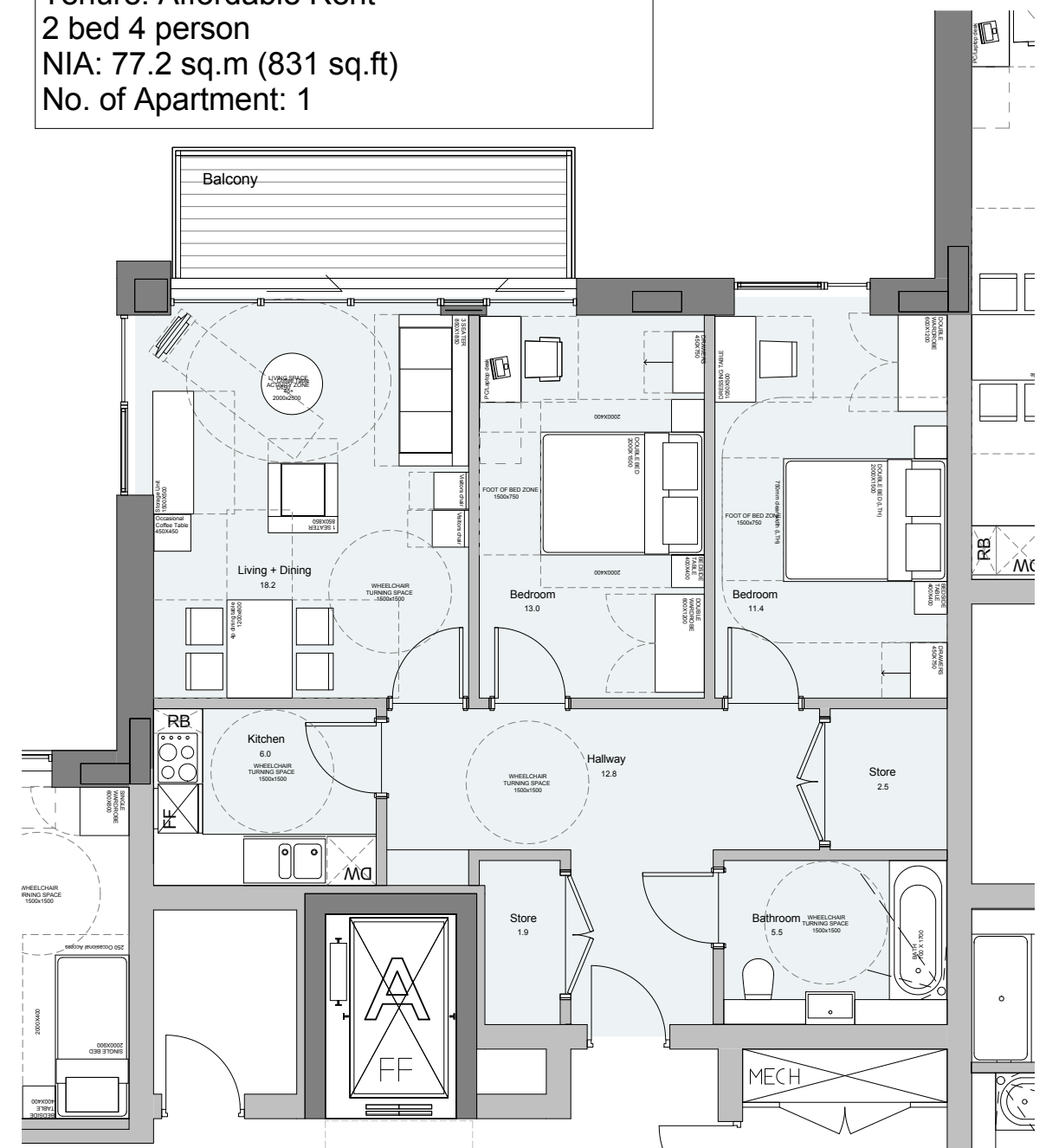
General notes:
 This drawing is copyright of KSR architects. This drawing must be read in conjunction with the Designer's Risk Assessment, specification and all other relevant documentation and drawings. KSR architects accept no liability for any expense, loss or damage of whatsoever nature and however arising from any variation made to this drawing or in the execution of the work to which it relates which has not been referred to them and their approval obtained.
 Do not scale from this drawing or the digital data, only figured dimensions are to be used. For Planning refer to linear scale.
 Check all dimensions on site prior to carrying out any works - advise any discrepancy
 Notes/Legends

Type: A09
 Tenure: Affordable Rent
 2 bed 4 person
 NIA: 73.4 sq.m (790 sq.ft)
 No. of Apartment: 4

Type: A10
 Tenure: Affordable Rent
 2 bed 4 person
 NIA: 77.2 sq.m (831 sq.ft)
 No. of Apartment: 1



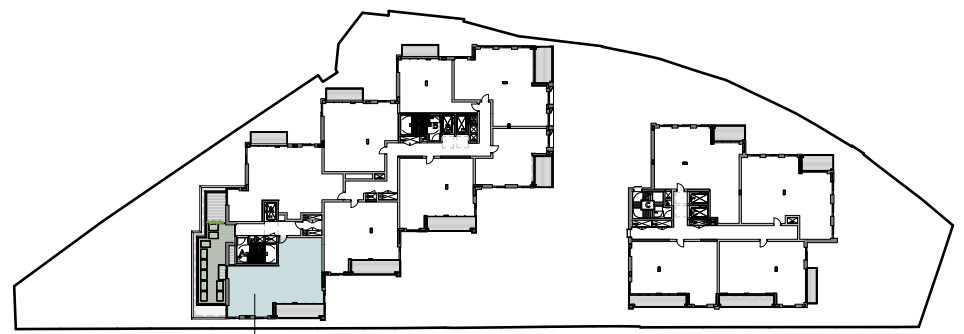
APARTMENT TYPE - A09



APARTMENT TYPE - A10

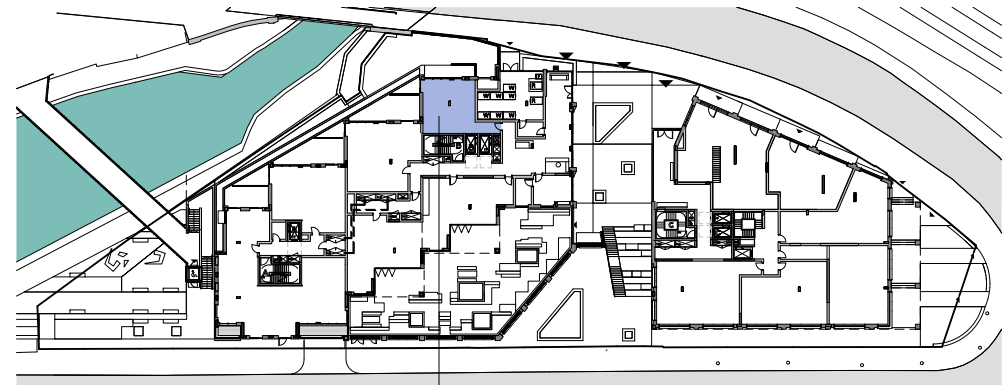


P. 1 Planning Submission	01.07.14 SHY_GJ
Rev/Notes	06 mm.yj By/CHK
© KSR architects	
Stamp	PLANNING SUBMISSION
Key Plan	
KSRARCHITECTS KSR Architects LLP 14 Goswell Street London EC1A 7DU T +44 (0)20 7882 5000 www.ksararchitects.com	
Project: CAMLEY STREET MIXED EMPLOYMENT AND RESIDENTIAL SCHEME	
Title: UNIT PLAN LAYOUT - TYPE A09-A10	
Date: JULY 2014	Drawn By: SHY
Scale: As indicated @ A1 / 1:80 @ A3	Checked: GJ
Project Ref: CML	Revision: P1
Drawing No: CML - 136	



TYPE A11

KEY MAP

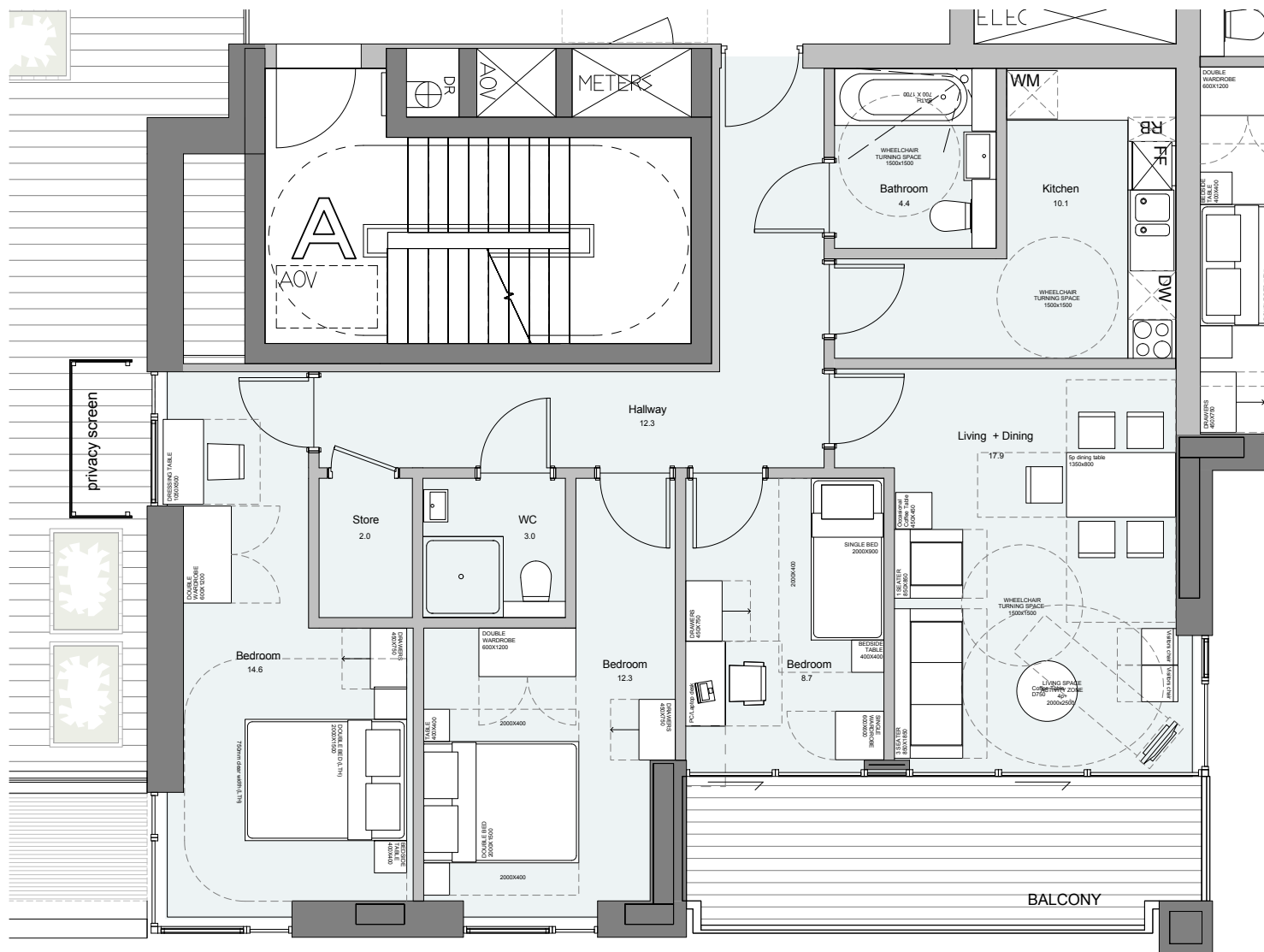


TYPE A12

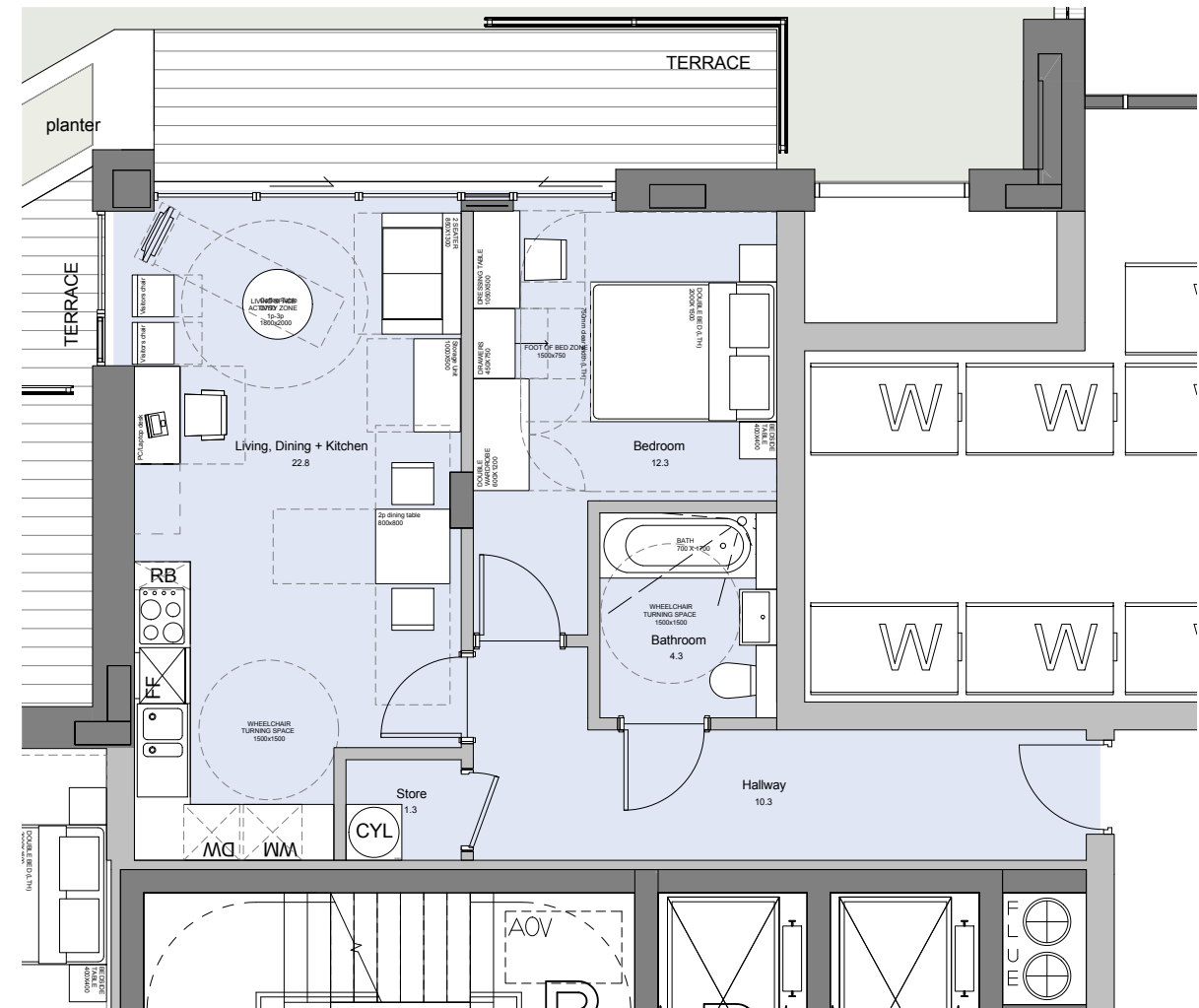
Key Plan UG

Type: A11
 Tenure: Affordable Rent
 3 bed 5 person
 NIA: 90.3 sq.m (972 sq.ft)
 No. of Apartment: 3

Type: A12
 Tenure: Affordable Intermediate
 1 bed 2 person
 NIA: 52.6 sq.m (566 sq.ft)
 No. of Apartment: 1



APARTMENT TYPE - A11



APARTMENT TYPE - A12

General notes:
 This drawing is copyright of KSR architects. This drawing must be read in conjunction with the Designer's Risk Assessment, specification and all other relevant documentation and drawings. KSR architects accept no liability for any expense, loss or damage of whatsoever nature and however arising from any variation made to this drawing or in the execution of the work to which it relates which has not been referred to them and their approval obtained.
 Do not scale from this drawing or the digital data, only figured dimensions are to be used. For Planning refer to linear scale.
 Check all dimensions on site prior to carrying out any works - advise any discrepancy
 Notes/Legends

P: 1 Planning Submission 01.07.14 SHY GJ
 Rev: Notes 06.mm.vj By: CML

© KSR architects
 Stamp: **PLANNING SUBMISSION**
 Key Plan

KSRARCHITECTS
 KSR Architects LLP
 14 Grosvenor Street
 London W1R 0ND
 Tel: +44 (0)20 7882 5000
 Email: info@ksrarchitects.com
 Website: www.ksrarchitects.com

Project:
CAMLEY STREET MIXED EMPLOYMENT AND RESIDENTIAL SCHEME

Title:
UNIT PLAN LAYOUT - TYPE A11-A12

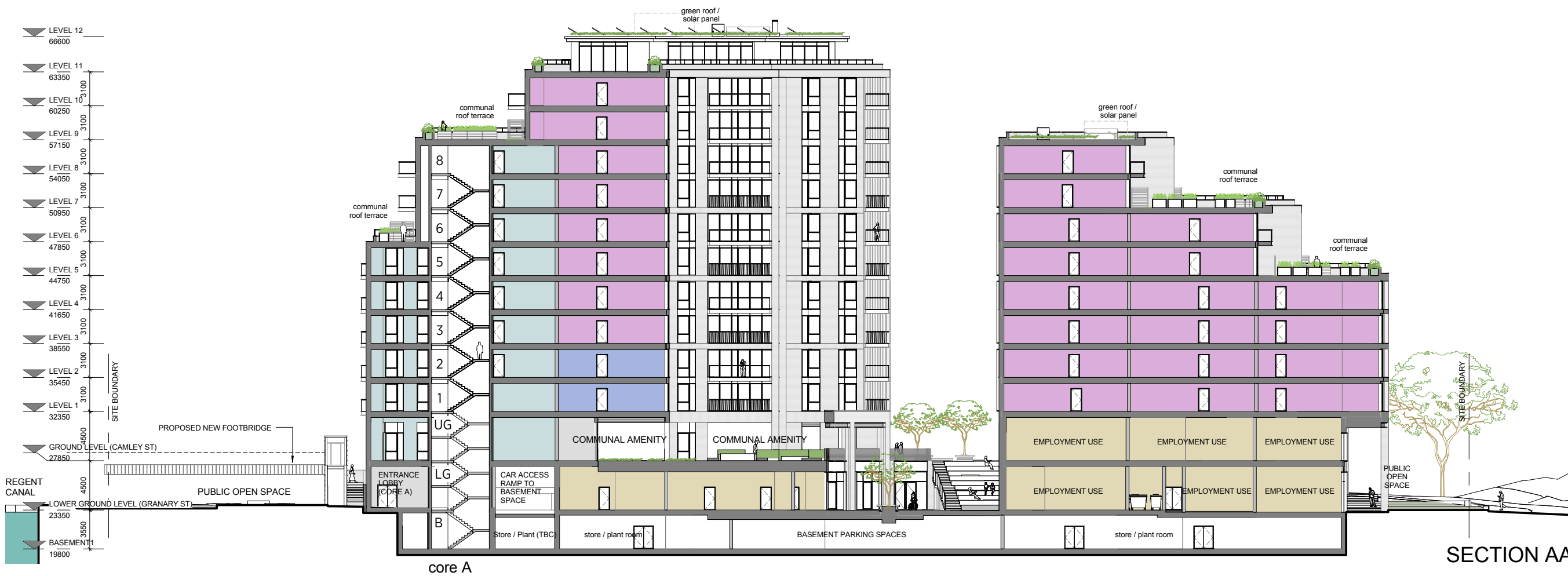
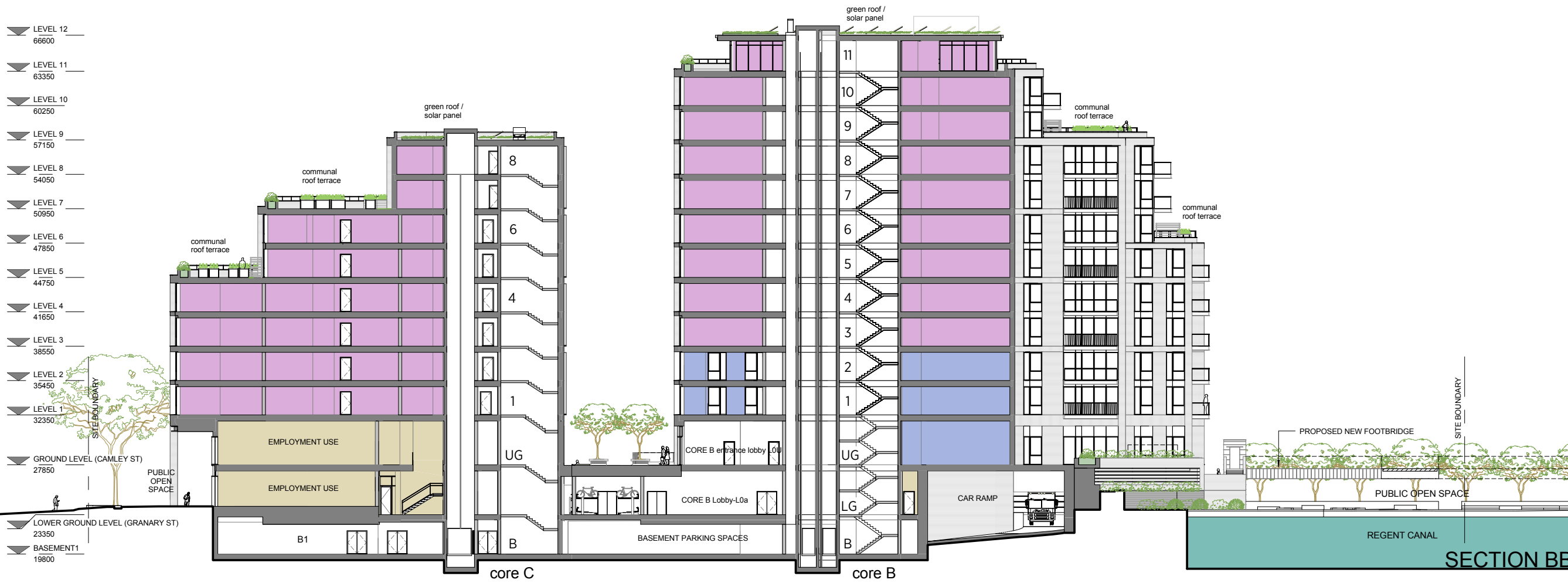
Date: JULY 2014 Drawn By: SHY Checked: GJ

Scale: As indicated @ A1 / 1:80 @ A3

Project Ref: Drawing No: Revision:
 CML CML - 137 P1



SCALE 1:40



General notes:
 This drawing is copyright of KSR architects. This drawing must be read in conjunction with the Designer's Risk Assessment, specification and all other relevant documentation and drawings. KSR architects accept no liability for any expense, loss or damage of whatsoever nature and however arising from any variation made to this drawing or in the execution of the work to which it relates which has not been referred to them and their approval obtained.
 Do not scale from this drawing or the digital data, only figured dimensions are to be used. For Planning refer to linear scale.
 Check all dimensions on site prior to carrying out any works - advise any discrepancy
 Notes/Legends

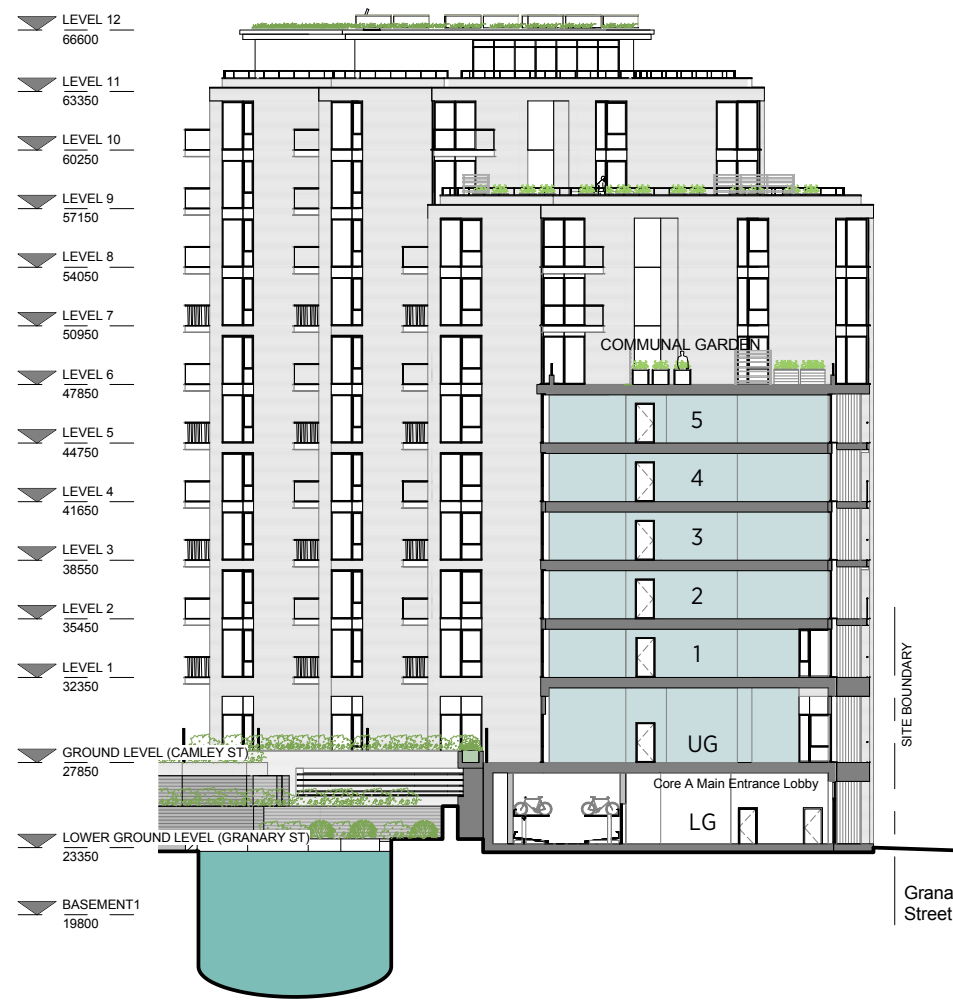
- OPEN MARKET
- INTERMEDIATE
- AFFORDABLE RENT
- B1

P: 1 Planning Submission 01.07.14 SHY GJ
 Rev: Notes 06.mm.yy By: CHD
 © KSR architects
 Stamp: **PLANNING SUBMISSION**
 Key Plan: 

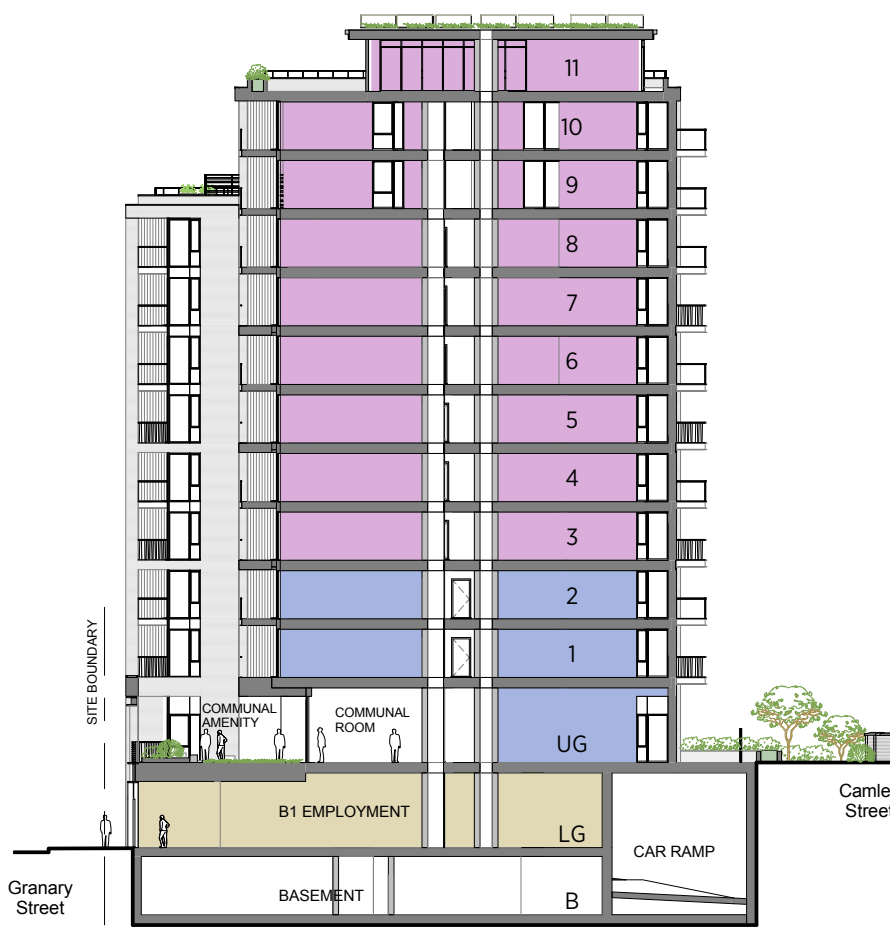
KSRARCHITECTS
 KSR Architects LLP
 14 Grenadale Street
 London W1R 0ND
 T: +44 (0)20 7882 5000
 E: info@ksrarchitects.com
 W: www.ksrarchitects.com
 Project: **CAMLEY STREET MIXED EMPLOYMENT AND RESIDENTIAL SCHEME**
 Title: **LONG SECTIONS AA, BB**
 Date: JULY 2014 Drawn By: SHY Checked: GJ
 Scale: 1: 200 @ A1 / 1: 400 @ A3
 Project Ref: Drawing No: Revision:
 CML CML - 201 P1

General notes:
 This drawing is copyright of KSR architects. This drawing must be read in conjunction with the Designer's Risk Assessment, specification and all other relevant documentation and drawings. KSR architects accept no liability for any expense, loss or damage of whatsoever nature and however arising from any variation made to this drawing or in the execution of the work to which it relates which has not been referred to them and their approval obtained.
 Do not scale from this drawing or the digital data, only figured dimensions are to be used. For Planning refer to linear scale.
 Check all dimensions on site prior to carrying out any works - advise any discrepancy
 Notes/Legends

- OPEN MARKET
- INTERMEDIATE
- AFFORDABLE RENT
- B1



SECTION CC



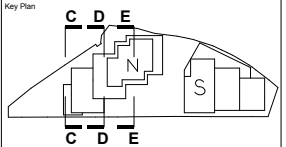
SECTION DD



SECTION EE

P: 1 Planning Submission	01.07.14 SHY GJ
Rev: Notes	06.mm.vj By: CHD
© KSR architects	
Stamp:	

PLANNING SUBMISSION



KSRARCHITECTS
 KSR Architects LLP
 14 Grosvenor Street
 London W1R 0ND
 Tel: +44 (0)20 7882 5000
 Email: info@ksrarchitects.com
 Website: www.ksrarchitects.com

Project:
CAMLEY STREET MIXED EMPLOYMENT AND RESIDENTIAL SCHEME

Title:
CROSS SECTIONS (NORTH) CC DD EE

Date: JULY 2014	Drawn By: SHY	Checked: GJ
Scale: 1:200 @ A1 / 1:400 @ A3		

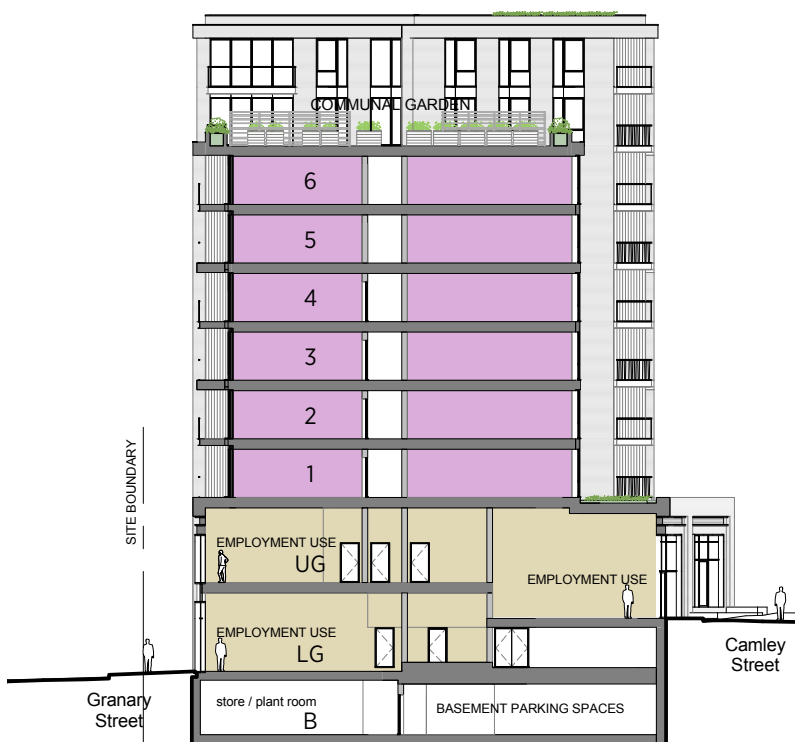
Project Ref: CML	Drawing No: CML - 202	Revision: P1
------------------	-----------------------	--------------

General notes:
 This drawing is copyright of KSR architects. This drawing must be read in conjunction with the Designer's Risk Assessment, specification and all other relevant documentation and drawings. KSR architects accept no liability for any expense, loss or damage of whatsoever nature and however arising from any variation made to this drawing or in the execution of the work to which it relates which has not been referred to them and their approval obtained.
 Do not scale from this drawing or the digital data, only figured dimensions are to be used. For Planning refer to linear scale.
 Check all dimensions on site prior to carrying out any works - advise any discrepancy
 Notes/Legends

- OPEN MARKET
- INTERMEDIATE
- AFFORDABLE RENT
- B1



SECTION FF



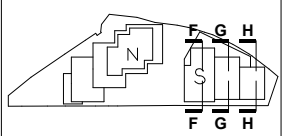
SECTION GG



SECTION HH

P: 1 Planning Submission 01.07.14 SHY GJ
 Rev: Notes 06.mm.vj By: CHD

© KSR architects
 Stamp: **PLANNING SUBMISSION**



KSRARCHITECTS
 KSR Architects LLP
 14 Goswell Street London EC2A 4DF
 T +44 (0)20 7882 5000
 M info@ksrarchitects.com
 W www.ksrarchitects.com

Project: **CAMLEY STREET MIXED EMPLOYMENT AND RESIDENTIAL SCHEME**

Title: **CROSS SECTIONS (SOUTH) FF GG HH**

Date: JULY 2014 Drawn By: SHY Checked: GJ

Scale: 1: 200 @ A1 / 1: 400 @ A3

Project Ref: CML Drawing No: CML - 203 Revision: P1