

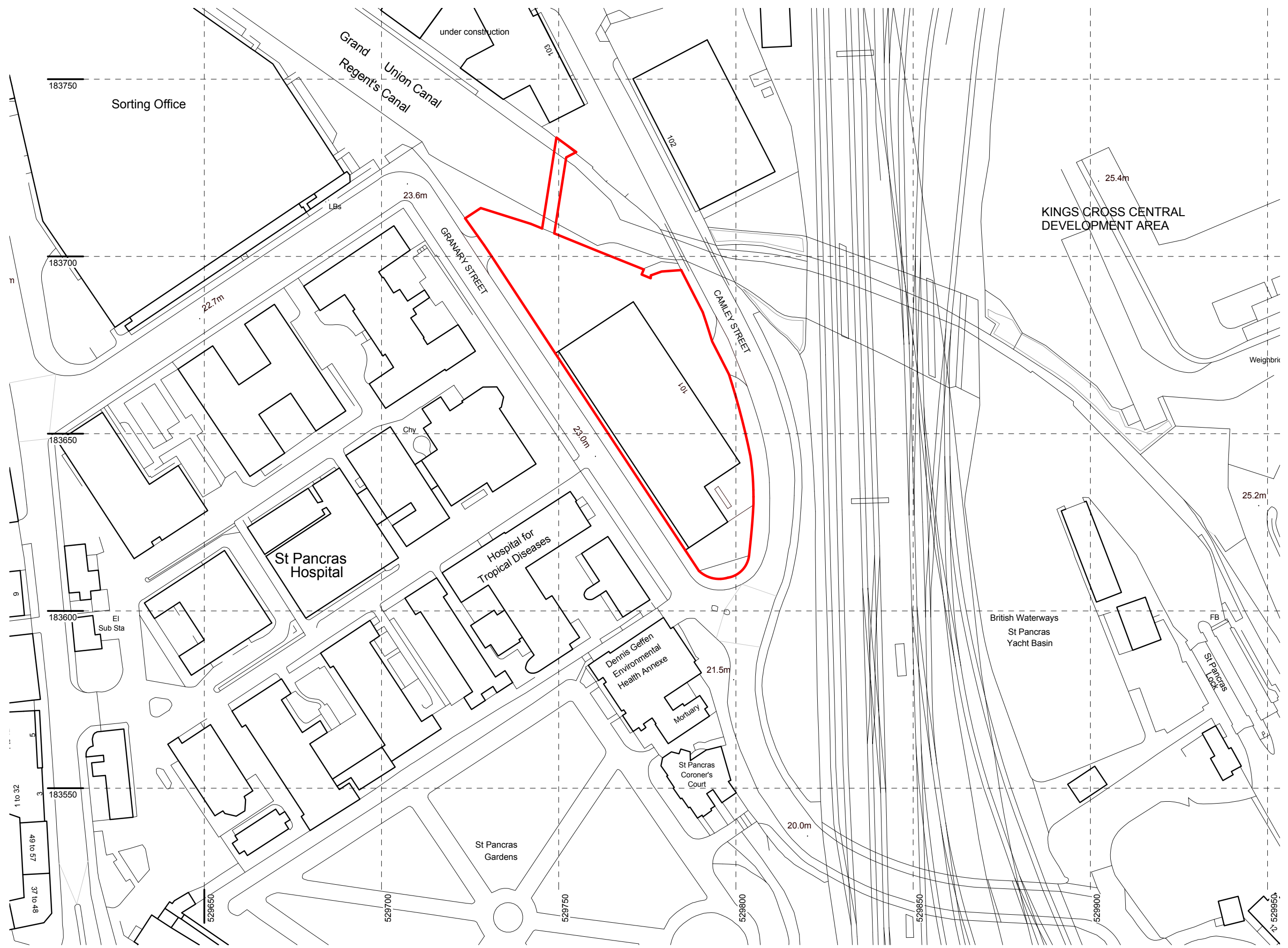


101 CAMLEY STREET MIXED USE DEVELOPMENT
London, NW1 0PF

PLANNING DRAWINGS

03 JULY 2014

DRAWING NO	DRAWING TITLE	Scale @ A3	Scale @ A1	Drwn/Checked	REVISION	Issued Date	Current Revision Description
01 Location Plan							
L01	LOCATION PLAN	1 : 1000	1 : 500	SHY GJ	P 1	01.07.14	Planning Submission
02 Existing Building							
E01	EXISTING SITE PLAN	1 : 1000	1 : 500	SHY GJ	P 1	01.07.14	Planning Submission
E02	EXISTING FLOOR PLANS	1 : 400	1 : 200	SHY GJ	P 1	01.07.14	Planning Submission
E03	EXISTING STREET ELEVATIONS	1 : 1000		SHY GJ	P 1	01.07.14	Planning Submission
03 Demolition							
D01	DEMOLITION PLANS	1 : 400	1 : 200	SHY GJ	P 1	01.07.14	Planning Submission
04 Proposed Drawings							
001	SITE PLAN (ROOF)	1 : 1000	1 : 500	SHY GJ	P 1	01.07.14	Planning Submission
002	SITE PLAN (GROUND)	1 : 1000	1 : 500	SHY GJ	P 1	01.07.14	Planning Submission
090	BASEMENT LEVEL PLAN	1 : 400	1 : 200	SHY GJ	P 1	01.07.14	Planning Submission
101	LOWER GROUND LEVEL PLAN	1 : 400	1 : 100	SHY GJ	P 1	01.07.14	Planning Submission
102	UPPER GROUND LEVEL PLAN	1 : 400	1 : 200	SHY GJ	P 1	01.07.14	Planning Submission
103	1ST FLOOR LEVEL PLAN	1 : 400	1 : 200	SHY GJ	P 1	01.07.14	Planning Submission
104	2ND FLOOR LEVEL PLAN	1 : 400	1 : 200	SHY GJ	P 1	01.07.14	Planning Submission
105	3RD FLOOR LEVEL PLAN	1 : 400	1 : 200	SHY GJ	P 1	01.07.14	Planning Submission
106	4TH FLOOR LEVEL PLAN	1 : 400	1 : 200	SHY GJ	P 1	01.07.14	Planning Submission
107	5TH FLOOR LEVEL PLAN	1 : 400	1 : 200	SHY GJ	P 1	01.07.14	Planning Submission
108	6TH FLOOR LEVEL PLAN	1 : 400	1 : 200	SHY GJ	P 1	01.07.14	Planning Submission
109	7TH FLOOR LEVEL PLAN	1 : 400	1 : 200	SHY GJ	P 1	01.07.14	Planning Submission
110	8TH FLOOR LEVEL PLAN	1 : 400	1 : 200	SHY GJ	P 1	01.07.14	Planning Submission
111	9TH FLOOR LEVEL PLAN	1 : 400	1 : 200	SHY GJ	P 1	01.07.14	Planning Submission
112	10TH FLOOR LEVEL PLAN	1 : 400	1 : 200	SHY GJ	P 1	01.07.14	Planning Submission
113	11TH FLOOR LEVEL PLAN	1 : 400	1 : 200	SHY GJ	P 1	01.07.14	Planning Submission
114	ROOF LEVEL PLAN	1 : 400	1 : 200	SHY GJ	P 1	01.07.14	Planning Submission
120	UNIT PLAN LAYOUT - TYPE P01-P02	1 : 400	1 : 200	SHY GJ	P 1	01.07.14	Planning Submission
121	UNIT PLAN LAYOUT - TYPE P03-P04	1 : 80	1 : 40	SHY GJ	P 1	01.07.14	Planning Submission
122	UNIT PLAN LAYOUT - TYPE P05-P06	1 : 80	1 : 40	SHY GJ	P 1	01.07.14	Planning Submission
123	UNIT PLAN LAYOUT - TYPE P07-P08	1 : 80	1 : 40	SHY GJ	P 1	01.07.14	Planning Submission
124	UNIT PLAN LAYOUT - TYPE P09-P10	1 : 80	1 : 40	SHY GJ	P 1	01.07.14	Planning Submission
125	UNIT PLAN LAYOUT - TYPE P11-P12	1 : 80	1 : 40	SHY GJ	P 1	01.07.14	Planning Submission
126	UNIT PLAN LAYOUT - TYPE P13-P14	1 : 80	1 : 40	SHY GJ	P 1	01.07.14	Planning Submission
127	UNIT PLAN LAYOUT - TYPE P15	1 : 80	1 : 40	SHY GJ	P 1	01.07.14	Planning Submission
128	UNIT PLAN LAYOUT - TYPE P16-P17	1 : 80	1 : 40	SHY GJ	P 1	01.07.14	Planning Submission
129	UNIT PLAN LAYOUT - TYPE P18-P19	1 : 80	1 : 40	SHY GJ	P 1	01.07.14	Planning Submission
130	UNIT PLAN LAYOUT - TYPE P20	1 : 80	1 : 40	SHY GJ	P 1	01.07.14	Planning Submission
131	UNIT PLAN LAYOUT - TYPE P21	1 : 100	1 : 50	SHY GJ	P 1	01.07.14	Planning Submission
132	UNIT PLAN LAYOUT - TYPE A01-A02	1 : 80	1 : 40	SHY GJ	P 1	01.07.14	Planning Submission
133	UNIT PLAN LAYOUT - TYPE A03-A04	1 : 80	1 : 40	SHY GJ	P 1	01.07.14	Planning Submission
134	UNIT PLAN LAYOUT - TYPE A05-A06	1 : 80	1 : 40	SHY GJ	P 1	01.07.14	Planning Submission
135	UNIT PLAN LAYOUT - TYPE A07-A08	1 : 80	1 : 40	SHY GJ	P 1	01.07.14	Planning Submission
136	UNIT PLAN LAYOUT - TYPE A09-A10	1 : 80	1 : 40	SHY GJ	P 1	01.07.14	Planning Submission
137	UNIT PLAN LAYOUT - TYPE A11-A12	1 : 80	1 : 40	SHY GJ	P 1	01.07.14	Planning Submission
201	LONG SECTIONS	1 : 400	1 : 200	SHY GJ	P 1	01.07.14	Planning Submission
202	CROSS SECTIONS (NORTH)	1 : 400	1 : 200	SHY GJ	P 1	01.07.14	Planning Submission
203	CROSS SECTIONS (SOUTH)	1 : 400	1 : 200	SHY GJ	P 1	01.07.14	Planning Submission
301	PROPOSED STREET ELEVATIONS	1 : 1000	1 : 500	SHY GJ	P 1	01.07.14	Planning Submission
302	PROPOSED STREET ELEVATION	1 : 1000	1 : 500	SHY GJ	P 1	01.07.14	Planning Submission
303	PROPOSED SOUTH WEST ELEVATION	1 : 400	1 : 200	SHY GJ	P 1	01.07.14	Planning Submission
304	PROPOSED NORTH EAST ELEVATION	1 : 400	1 : 200	SHY GJ	P 1	01.07.14	Planning Submission
305	PROPOSED NORTH WEST ELEVATION	1 : 400	1 : 200	SHY GJ	P 1	01.07.14	Planning Submission
306	PROPOSED SOUTH EAST ELEVATION	1 : 400	1 : 200	SHY GJ	P 1	01.07.14	Planning Submission
307	PROPOSED SOUTH EAST ELEVATION, NORTH BLOCK	1 : 400	1 : 200	SHY GJ	P 1	01.07.14	Planning Submission
308	PROPOSED NORTH WEST ELEVATION, SOUTH BLOCK	1 : 400	1 : 200	SHY GJ	P 1	01.07.14	Planning Submission
330	DETAIL BAY STUDY A	1 : 50	1 : 25	SHY GJ	P 1	01.07.14	Planning Submission
331	DETAIL BAY STUDY B	1 : 50	1 : 25	SHY GJ	P 1	01.07.14	Planning Submission
332	DETAIL BAY STUDY C	1 : 50	1 : 25	SHY GJ	P 1	01.07.14	Planning Submission
333	DETAIL BAY STUDY D	1 : 50	1 : 25	SHY GJ	P 1	01.07.14	Planning Submission
334	DETAIL BAY STUDY E	1 : 50	1 : 25	SHY GJ	P 1	01.07.14	Planning Submission



1 : 500 @ A1, 1 : 1,000 @ A3
LOCATION PLAN

General notes:
 This drawing is copyright of KSR architects. This drawing must be read in conjunction with the Designer's Risk Assessment, specification and all other relevant documentation and drawings. KSR architects accept no liability for any expense, loss or damage of whatsoever nature and however arising from any variation made to this drawing or in the execution of the work to which it relates which has not been referred to them and their approval obtained.
 Do not scale from this drawing or the digital data, only figured dimensions are to be used. For Planning refer to linear scale.
 Check all dimensions on site prior to carrying out any works - advise any discrepancy
 Notes/Legends

P 1 Planning Submission	01.07.14 SHY_GJ
Rev Notes	06.mm.vj By CML
© KSR architects	

PLANNING SUBMISSION



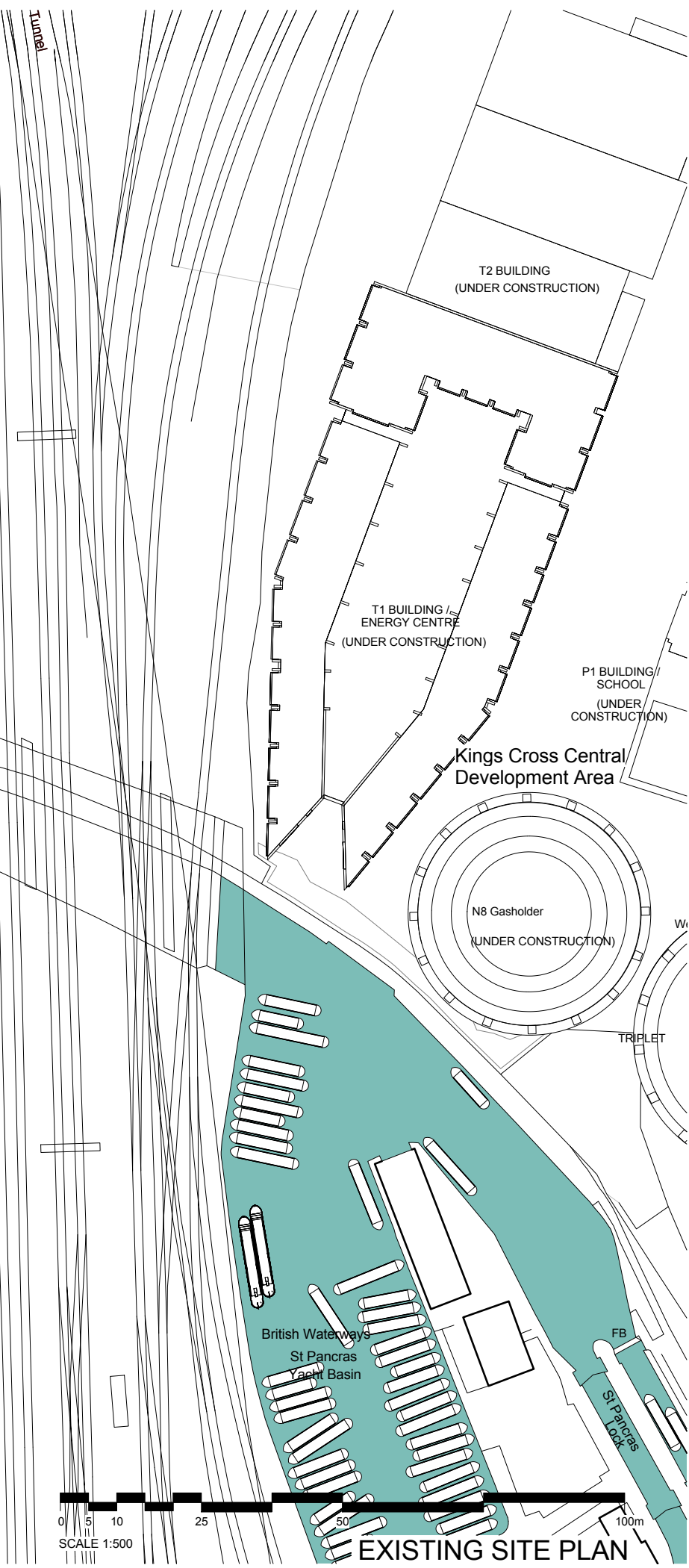
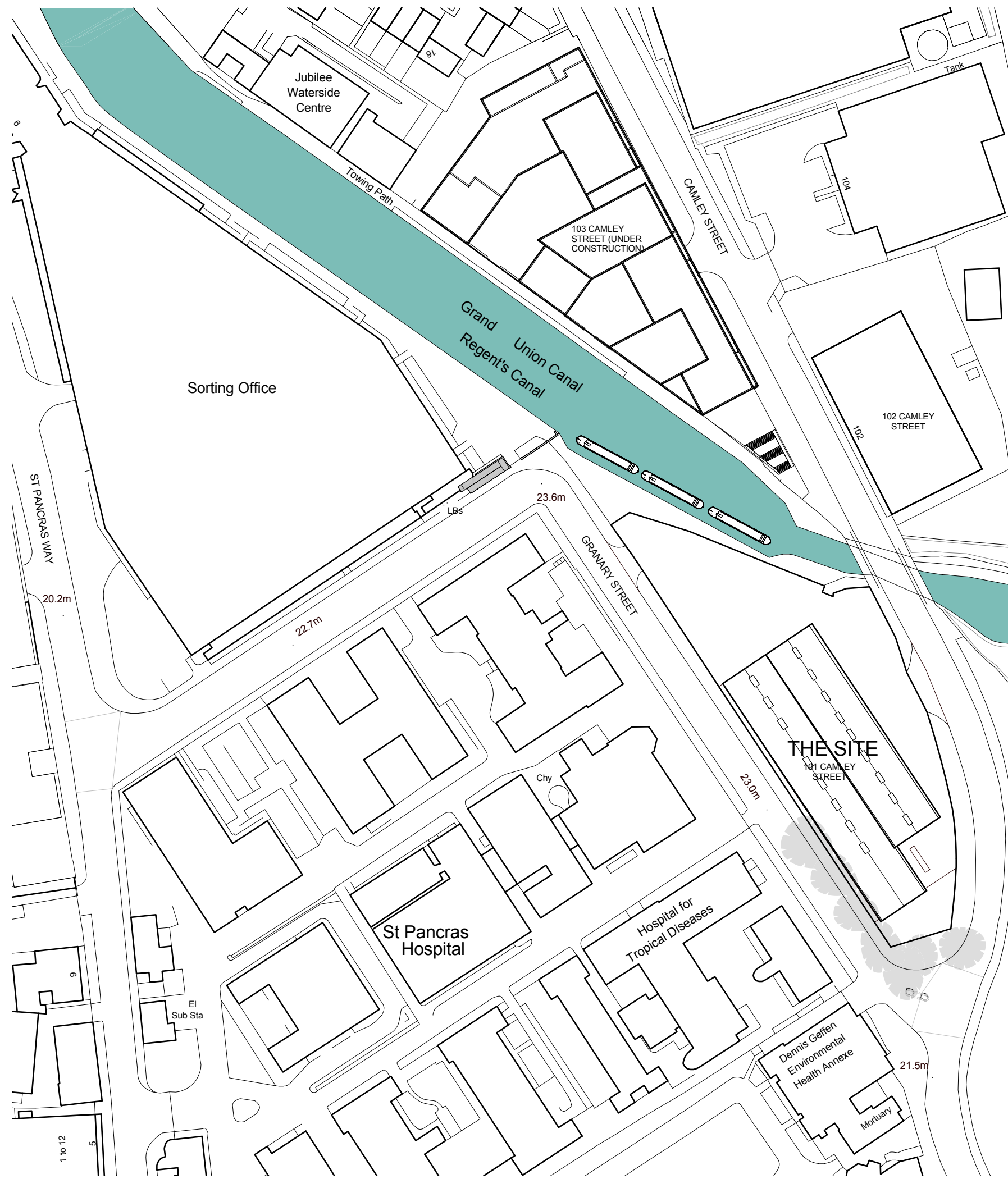
KSRARCHITECTS
 KSR Architects LLP
 14 Grosvenor Street
 London W1R 0ND
 Tel: +44 (0)20 7882 5000
 Email: info@ksrarchitects.com
 Website: www.ksrarchitects.com

Project:
CAMLEY STREET MIXED EMPLOYMENT AND RESIDENTIAL SCHEME

Title:
LOCATION PLAN

Date: JULY 2014	Drawn By: SHY	Checked: GJ
Scale: 1:500 @ A1 / 1:1000 @ A3		

Project Ref: CML	Drawing No: CML - L01	Revision: P1
------------------	-----------------------	--------------



General notes:
 This drawing is copyright of KSR architects. This drawing must be read in conjunction with the Designer's Risk Assessment, specification and all other relevant documentation and drawings. KSR architects accept no liability for any expense, loss or damage of whatsoever nature and however arising from any variation made to this drawing or in the execution of the work to which it relates which has not been referred to them and their approval obtained.
 Do not scale from this drawing or the digital data, only figured dimensions are to be used. For Planning refer to linear scale.
 Check all dimensions on site prior to carrying out any works - advise any discrepancy
 Notes/Legends

P. 1 Planning Submission	01.07.14 SHY_GJ
Rev/Notes	06.mm.vj By/Chkd
© KSR architects	

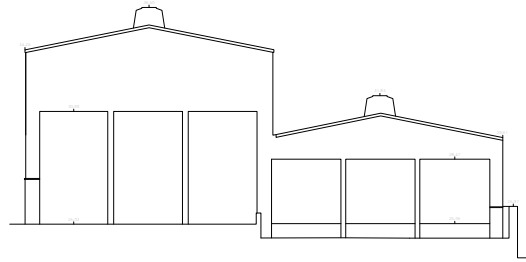
PLANNING SUBMISSION



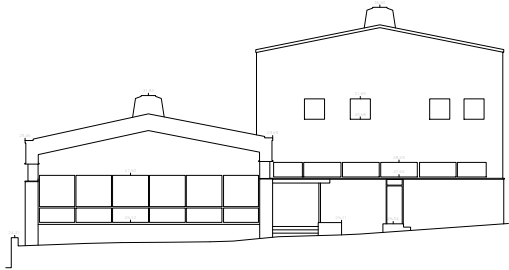
KSRARCHITECTS
 KSR Architects LLP
 14 Grosvenor Street
 London W1R 0ND
 info@ksrarchitects.com
 t +44 (0)20 7482 5000
 www.ksrarchitects.com

Project:
CAMLEY STREET MIXED EMPLOYMENT AND RESIDENTIAL SCHEME
 Title:
EXISTING SITE PLAN

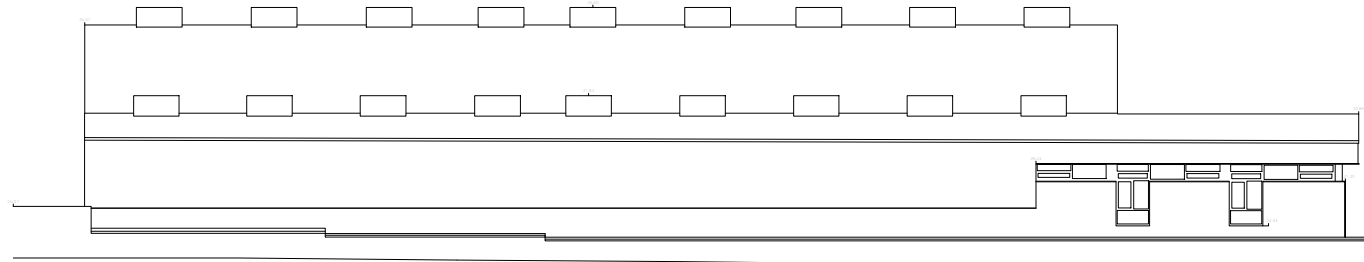
Date: JULY 2014	Drawn By: SHY	Checked: GJ
Scale: 1:500 @ A1 / 1:1000 @ A3		
Project Ref: CML	Drawing No: CML - E01	Revision: P1



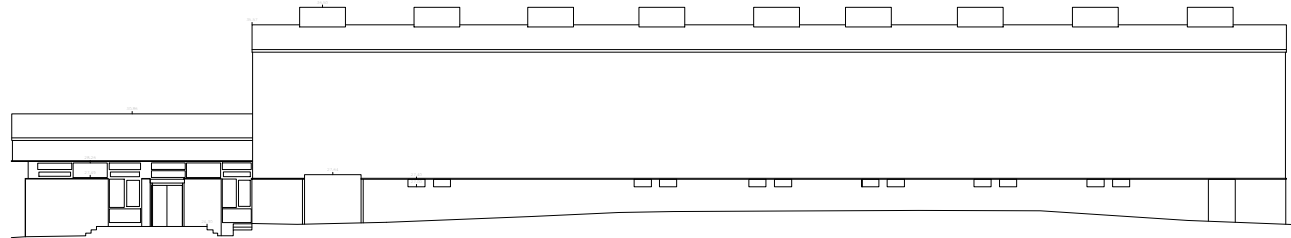
EXISTING NORTH ELEVATION



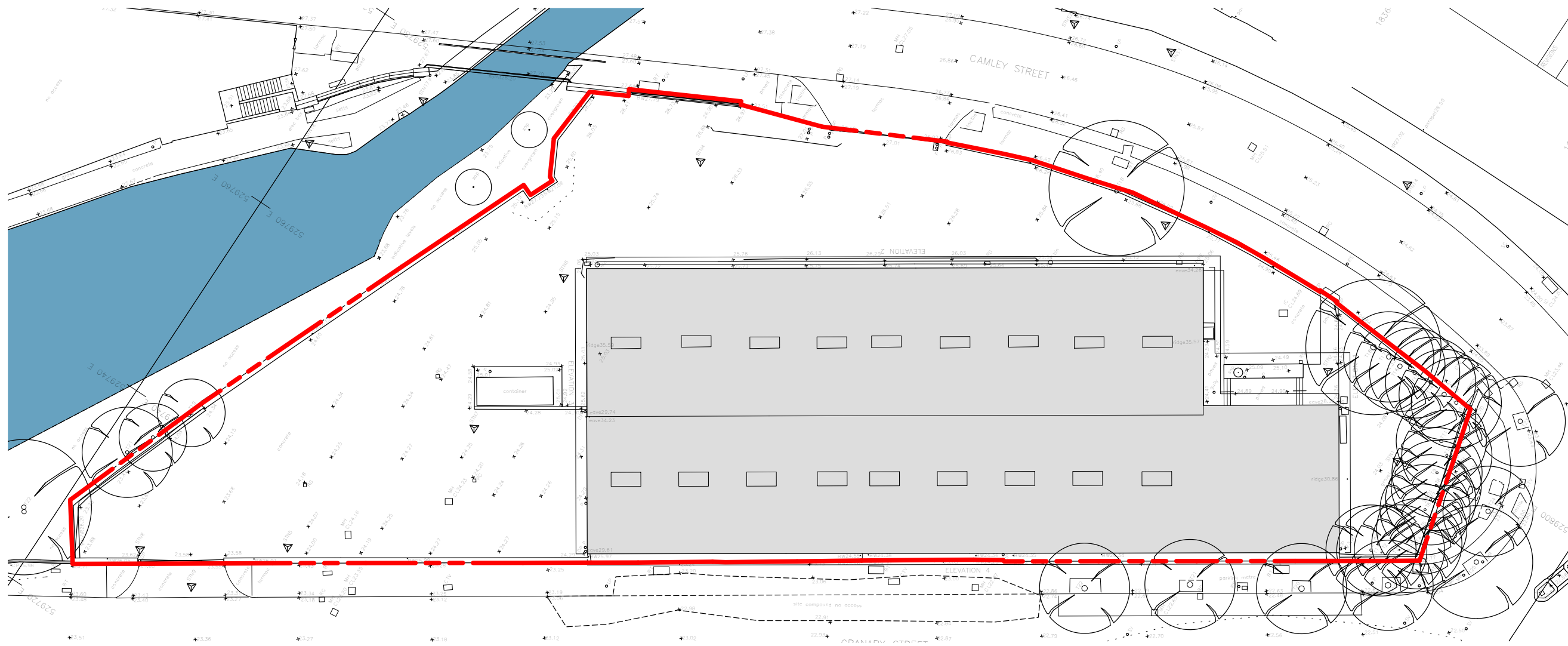
EXISTING SOUTH ELEVATION



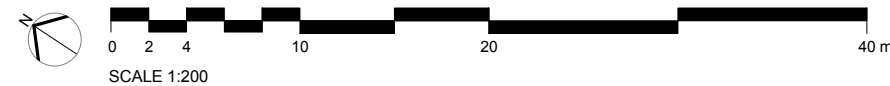
EXISTING WEST ELEVATION (GRANARY STREET)



EXISTING EAST ELEVATION (CAMLEY STREET)



EXISTING BUILDING PLAN



General notes:
 This drawing is copyright of KSR architects. This drawing must be read in conjunction with the Designer's Risk Assessment, specification and all other relevant documentation and drawings. KSR architects accept no liability for any expense, loss or damage of whatsoever nature and however arising from any variation made to this drawing or in the execution of the work to which it relates which has not been referred to them and their approval obtained.
 Do not scale from this drawing or the digital data, only figured dimensions are to be used. For Planning refer to linear scale.
 Check all dimensions on site prior to carrying out any works - advise any discrepancy
 Notes/Legends

P 1 Planning Submission 01.07.14 SHY GU
 Rev Notes 01.07.14 By CHD

© KSR architects
 Stamp
PLANNING SUBMISSION

Key Plan

KSRARCHITECTS
 KSR Architects LLP
 14 Grosvenor Street
 London W1R 0ND
 Tel: +44 (0)20 7882 5000
 Email: info@ksrarchitects.com
 Website: www.ksrarchitects.com

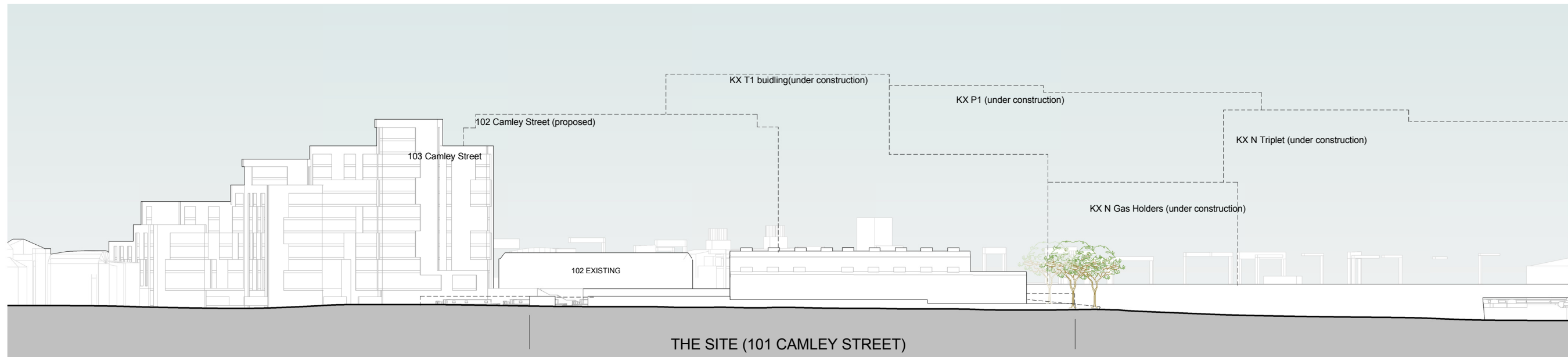
Project:
CAMLEY STREET MIXED EMPLOYMENT AND RESIDENTIAL SCHEME

Title:
EXISTING FLOOR PLANS

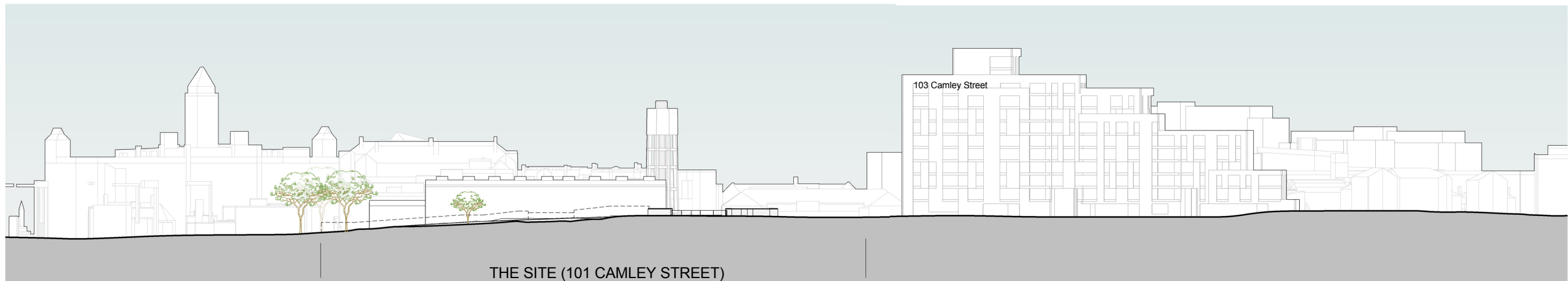
Date: JULY 2014 Drawn By: SHY Checked: GU

Scale: 1:200 @ A1 / 1:400 @ A3

Project Ref: Drawing No: Revision:
CML CML - E02 P1



EXISTING STREET ELEVATION (GRANARY STREET / WEST)



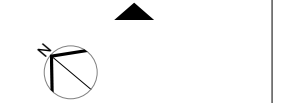
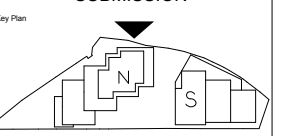
EXISTING STREET ELEVATION (CAMLEY STREET / EAST)

General notes:
 This drawing is copyright of KSR architects. This drawing must be read in conjunction with the Designer's Risk Assessment, specification and all other relevant documentation and drawings. KSR architects accept no liability for any expense, loss or damage of whatsoever nature and however arising from any variation made to this drawing or in the execution of the work to which it relates which has not been referred to them and their approval obtained.
 Do not scale from this drawing or the digital data, only figured dimensions are to be used. For Planning refer to linear scale.
 Check all dimensions on site prior to carrying out any works - advise any discrepancy
 Notes/Legends

P: 1 Planning Submission 01.07.14 SHY GJ
 Rev: Notes 06.mm.vj By: CML

© KSR architects

Stamp: **PLANNING SUBMISSION**



KSRARCHITECTS
 KSR Architects LLP
 14 Goswell Street London EC2A 4DF
 Tel: +44 (0)20 7882 5000
 Email: info@ksrarchitects.com
 Website: www.ksrarchitects.com

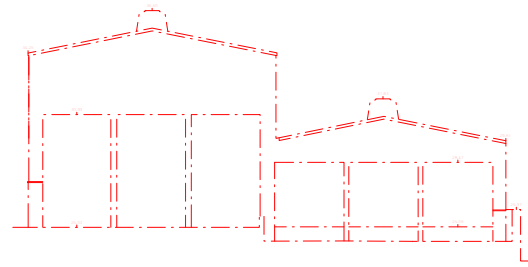
Project: **CAMLEY STREET MIXED EMPLOYMENT AND RESIDENTIAL SCHEME**

Title: **EXISTING STREET ELEVATIONS**

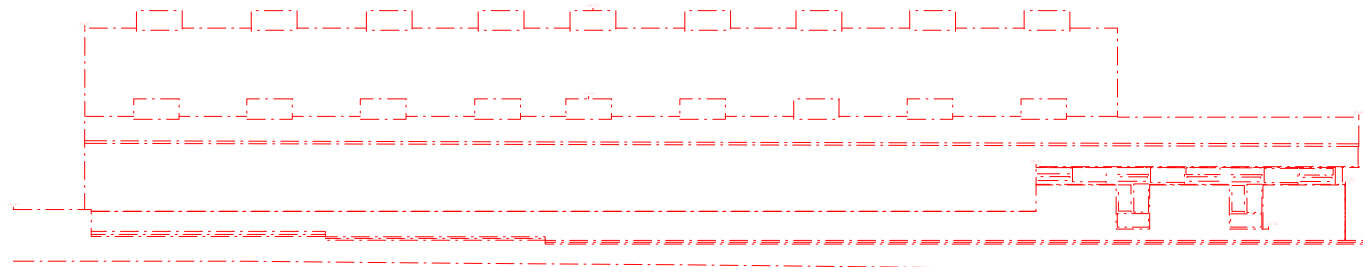
Date: 10/03/13 Drawn By: SHY Checked: GJ

Scale: 1: 500 @ A1 / 1: 1000 @ A3

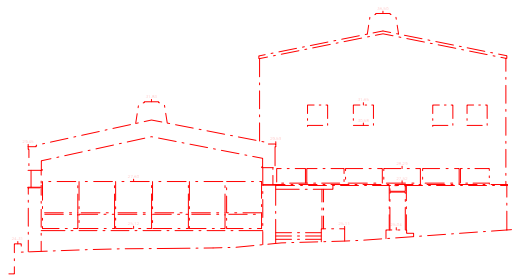
Project Ref:	Drawing No:	Revision:
CML	CML - E03	P1



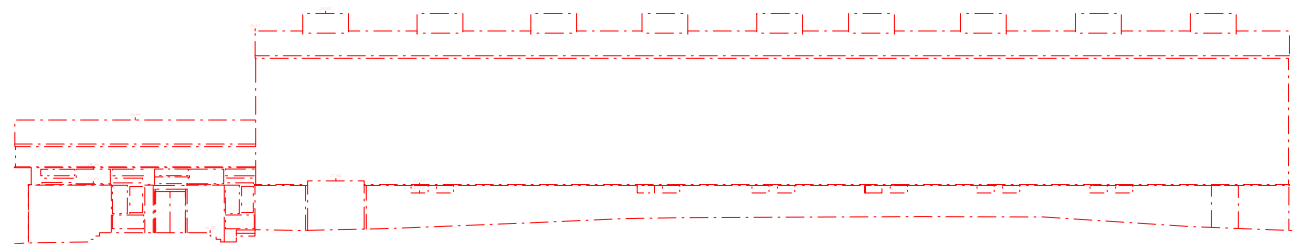
EXISTING NORTH ELEVATION



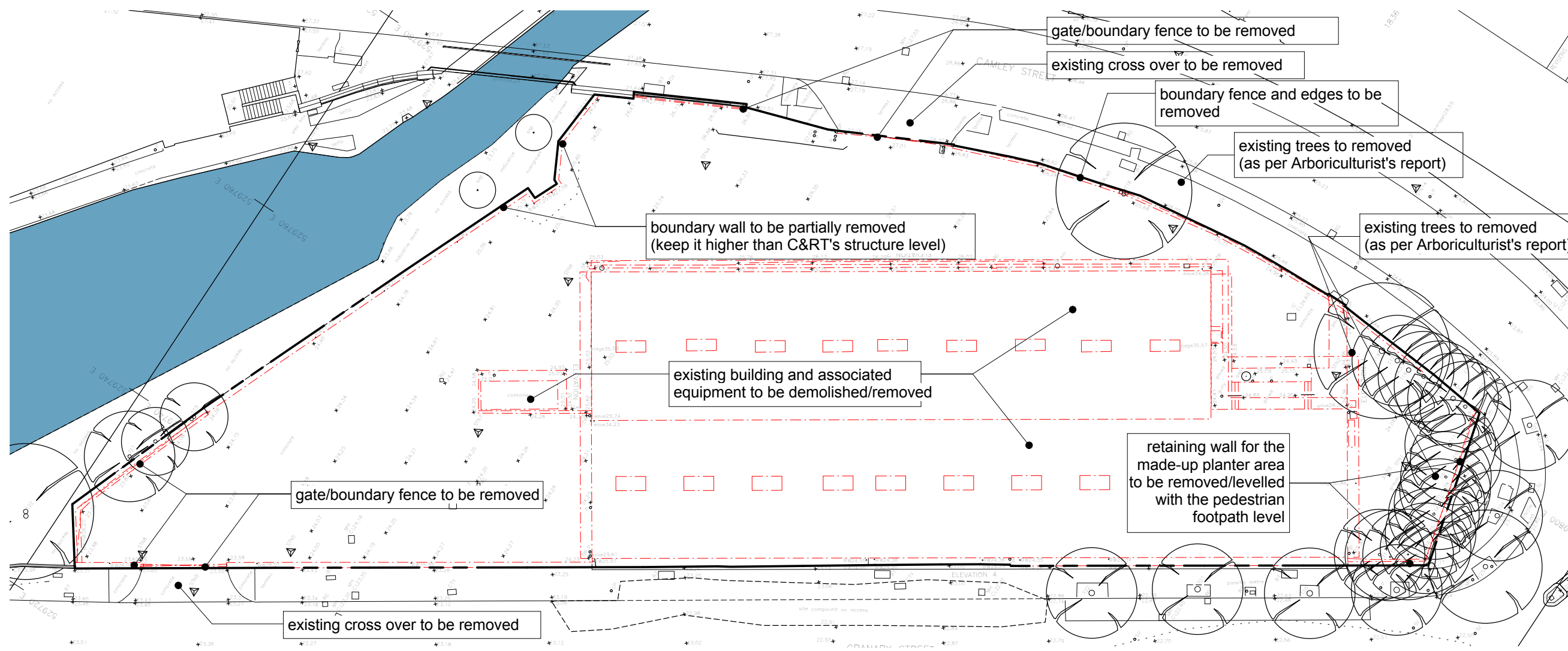
EXISTING WEST ELEVATION (GRANARY STREET)



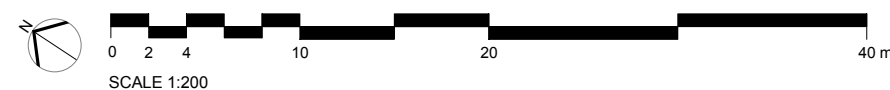
EXISTING SOUTH ELEVATION



EXISTING EAST ELEVATION (CAMLEY STREET)



EXISTING BUILDING PLAN



General notes:
 This drawing is copyright of KSR architects. This drawing must be read in conjunction with the Designer's Risk Assessment, specification and all other relevant documentation and drawings. KSR architects accept no liability for any expense, loss or damage of whatsoever nature and however arising from any variation made to this drawing or in the execution of the work to which it relates which has not been referred to them and their approval obtained.
 Do not scale from this drawing or the digital data, only figured dimensions are to be used. For Planning refer to linear scale.
 Check all dimensions on site prior to carrying out any works - advise any discrepancy
 Notes/Legends

Buildings and structures to be demolished shown as red dash-dot line



P 1 Planning Submission 01.07.14 SHY GU
 Rev Notes 01 mm yj By Chd

© KSR architects
 Stamp **PLANNING SUBMISSION**

Key Plan

KSRARCHITECTS
 KSR Architects LLP
 14 Goswell Street
 London EC1A 7DU
 Tel: +44 (0)20 7882 5000
 Email: info@ksrarchitects.com
 Website: www.ksrarchitects.com

Project: **CAMLEY STREET MIXED EMPLOYMENT AND RESIDENTIAL SCHEME**
 Title: **DEMOLITION PLANS**

Date: JULY 2014 Drawn By: SHY Checked: GU

Scale: 1:200 @ A1 / 1:400 @ A3
 Project Ref: CML Drawing No: CML - D01 Revision: P1