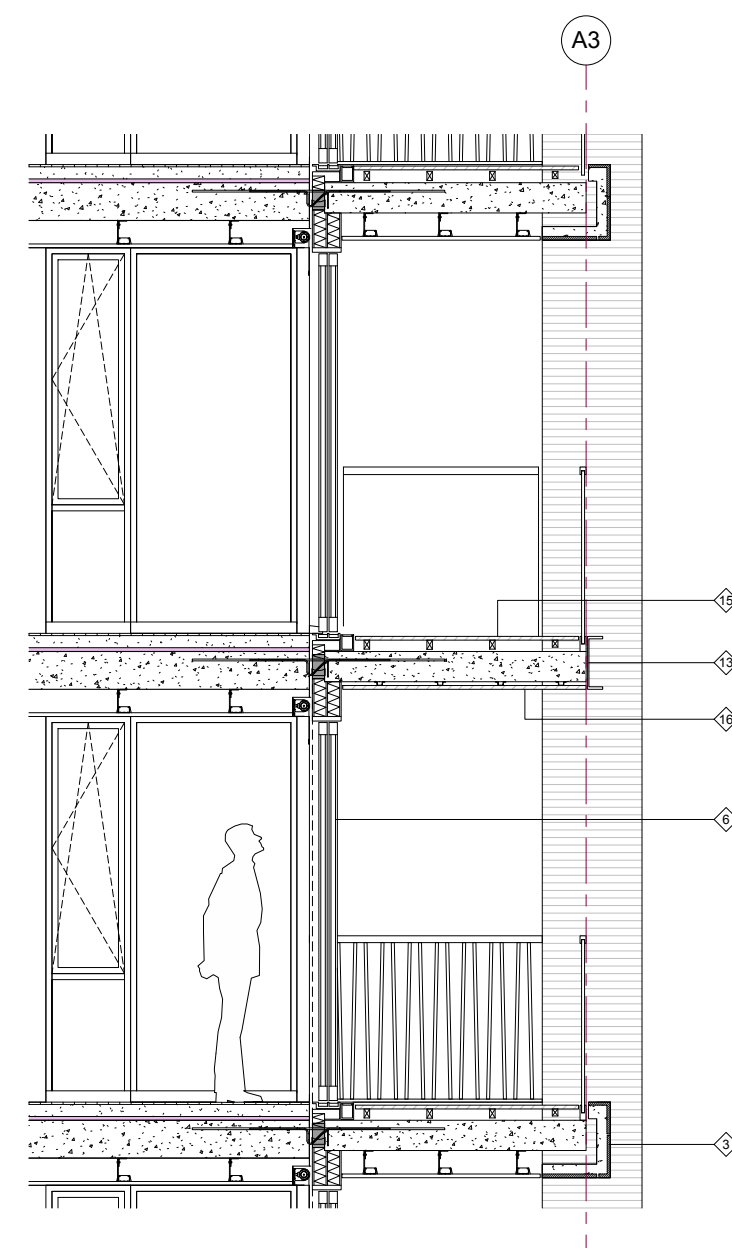
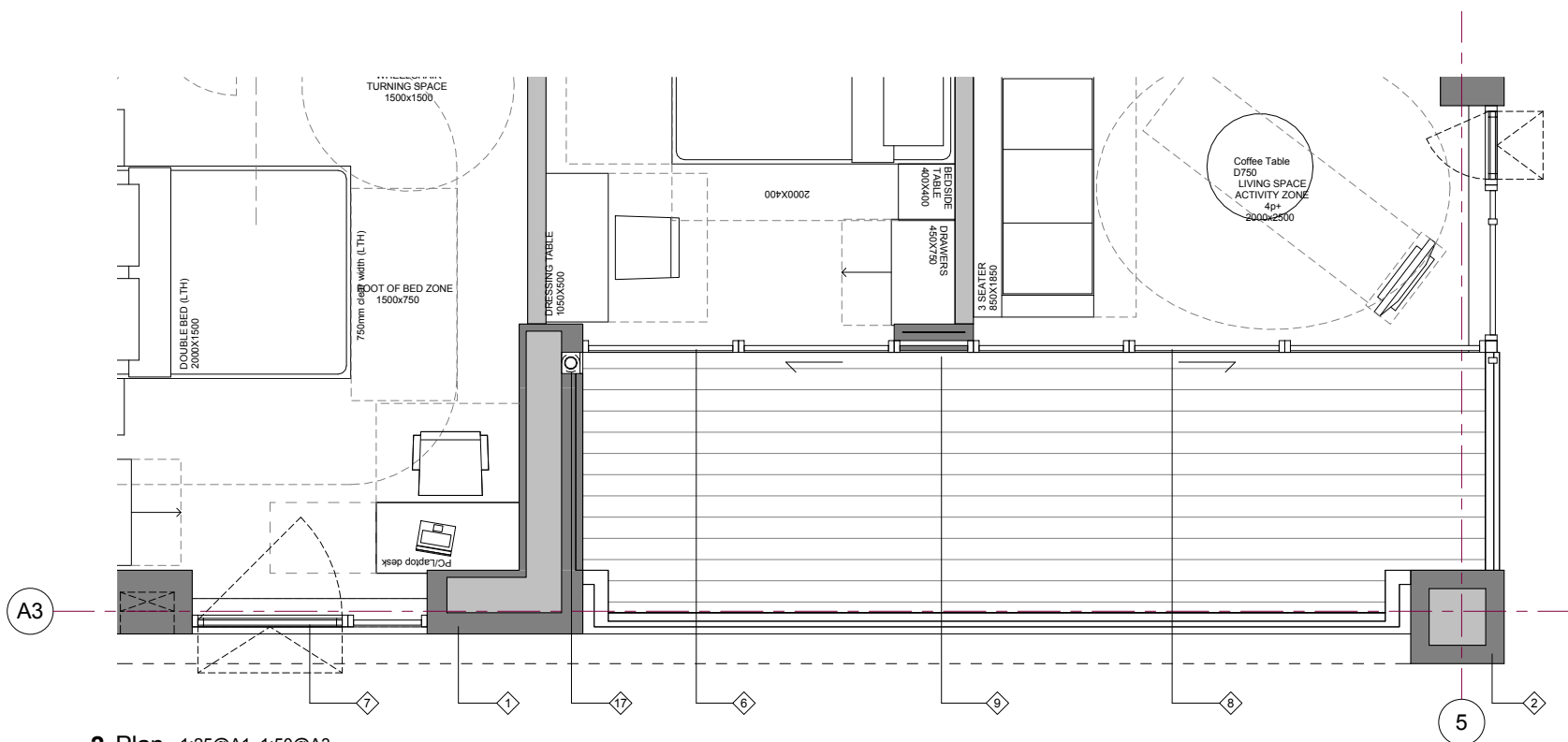


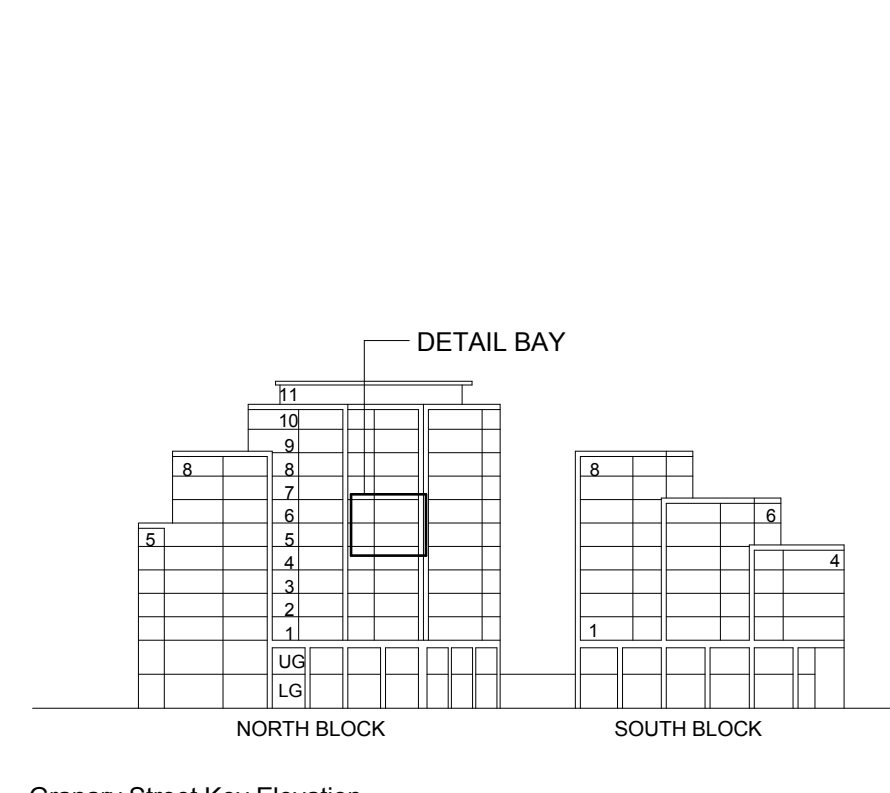
1 Elevation 1:25@A1, 1:50@A3



3 Section 1:25@A1, 1:50@A3



2 Plan 1:25@A1, 1:50@A3



Granary Street Key Elevation

General notes:  
 This drawing is copyright of KSR architects. This drawing must be read in conjunction with the Designer's Risk Assessment, specification and all other relevant documentation and drawings. KSR architects accept no liability for any expense, loss or damage of whatsoever nature and however arising from any variation made to this drawing or in the execution of the work to which it relates which has not been referred to them and their approval obtained.  
 Do not scale from this drawing or the digital data, only figured dimensions are to be used. For Planning refer to linear scale.  
 Check all dimensions on site prior to carrying out any works - advise any discrepancy  
 Notes/Legends

- MATERIAL KEY**
- 1 GREY COLOURED BRICK
  - 2 GREY COLOURED BRICK FRAME
  - 3 SOLDIER COURSE GREY COLOURED BRICK ELEMENT
  - 4 CHAMFERED GREY COLOURED BRICK ELEMENT
  - 5 RETRACTABLE EXTERNAL VENETIAN BLIND
  - 6 FIXED DOUBLE GLAZED UNIT
  - 7 FULLY REVERSIBLE DOUBLE GLAZED UNIT
  - 8 ALUMINUM FRAMED DOUBLE GLAZED DOOR
  - 9 METAL SPANDREL PANEL
  - 10 COMMERCIAL STOREFRONT GLAZED UNIT
  - 11 CLEAR GLASS BALUSTRADE
  - 12 METAL BALUSTRADE
  - 13 PAINTED METAL C-CHANNEL TO BALCONY STRUCTURE
  - 14 PROTRUDED METAL WINDOW FRAME
  - 15 TIMBER DECKING
  - 16 TIMBER FINISH TO BALCONY SOFFIT
  - 17 CONCEALED RAINWATER PIPE
  - 18 METAL GRILLS
  - 19 INTAKE/EXTRACTION VENTS
  - 20 RENDER FINISH PARAPET
  - 21 METAL COPING

P. 1 Planning Submission 01.07.14 SHY\_GJ  
 Rev/Notes 06.mm.yj By/CHK  
 © KSR architects  
 Stamp: **PLANNING SUBMISSION**  
 Key Plan:

**KSRARCHITECTS**  
 KSR Architects LLP info@ksrarchitects.com  
 14 Goswell Street t: +44 (0)20 7882 5000  
 London N1H 0ND www.ksrarchitects.com

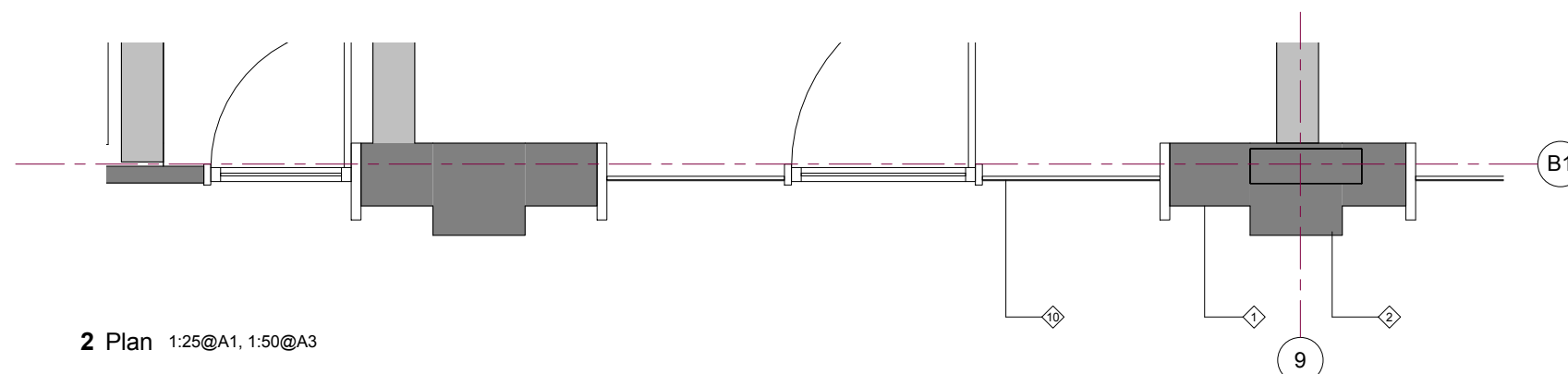
Project:  
**CAMLEY STREET MIXED EMPLOYMENT AND RESIDENTIAL SCHEME**

Title:  
**DETAIL BAY STUDY A**  
**Level 5, 6**

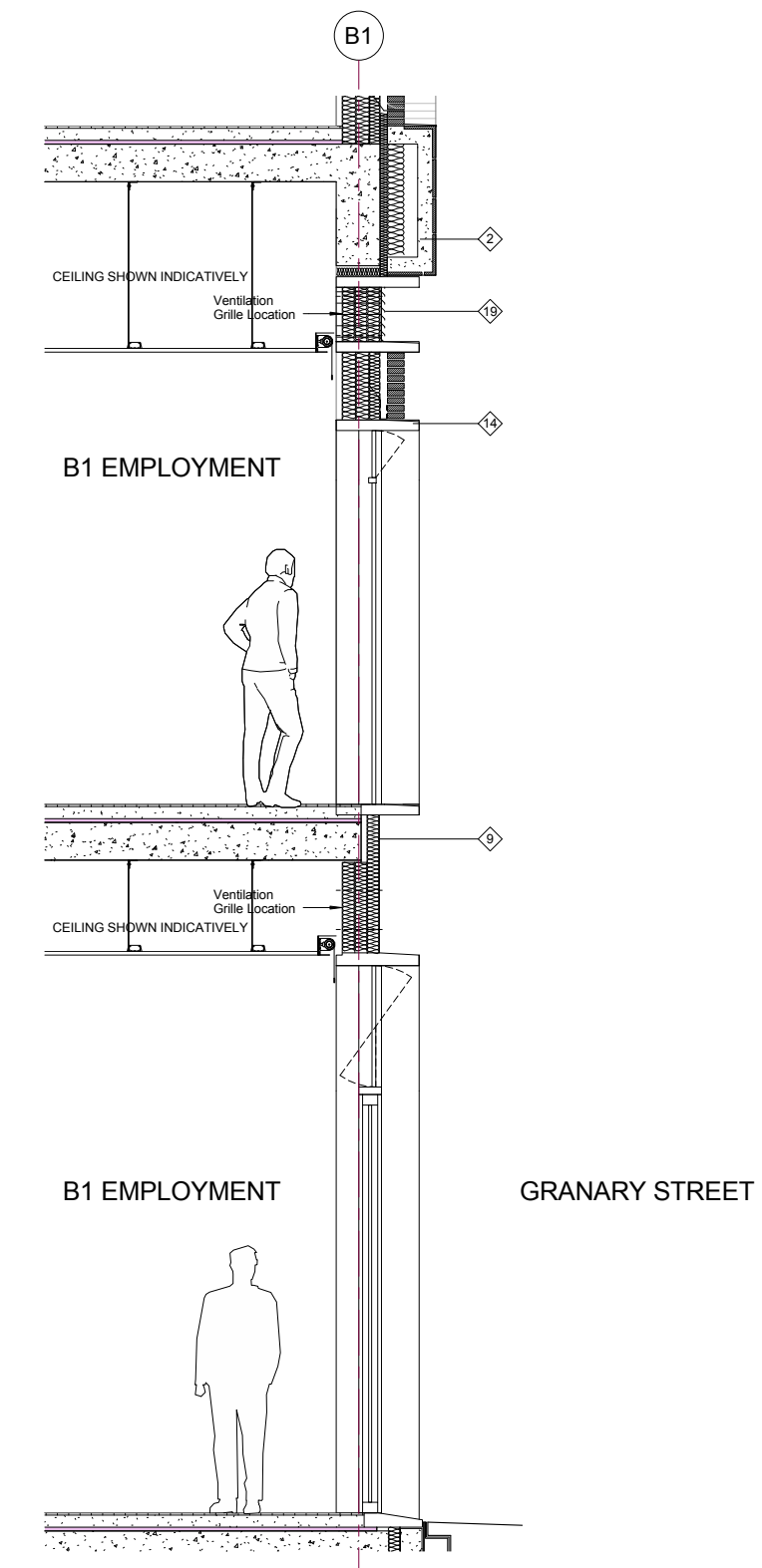
Date: JULY 2014 Drawn By: SHY Checked: GJ  
 Scale: As indicated @ A1 / 1:50 @ A3  
 Project Ref: Drawing No: Revision:  
 CML CML - 330 P1



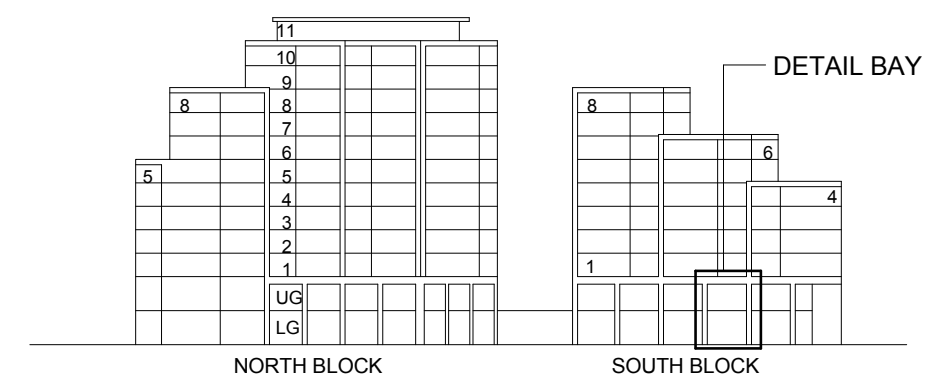
1 Elevation 1:25@A1, 1:50@A3



2 Plan 1:25@A1, 1:50@A3



3 Section 1:25@A1, 1:50@A3



Granary Street Key Elevation

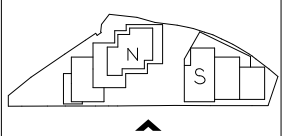
General notes:  
 This drawing is copyright of KSR architects. This drawing must be read in conjunction with the Designer's Risk Assessment, specification and all other relevant documentation and drawings. KSR architects accept no liability for any expense, loss or damage of whatsoever nature and however arising from any variation made to this drawing or in the execution of the work to which it relates which has not been referred to them and their approval obtained.  
 Do not scale from this drawing or the digital data, only figured dimensions are to be used. For Planning refer to linear scale.  
 Check all dimensions on site prior to carrying out any works - advise any discrepancy  
 Notes/Legends

**MATERIAL KEY**

1	GREY COLOURED BRICK
2	GREY COLOURED BRICK FRAME
3	SOLDIER COURSE GREY COLOURED BRICK ELEMENT
4	CHAMFERED GREY COLOURED BRICK ELEMENT
5	RETRACTABLE EXTERNAL VENETIAN BLIND
6	FIXED DOUBLE GLAZED UNIT
7	FULLY REVERSIBLE DOUBLE GLAZED UNIT
8	ALUMINUM FRAMED DOUBLE GLAZED DOOR
9	METAL SPANDREL PANEL
10	COMMERCIAL STOREFRONT GLAZED UNIT
11	CLEAR GLASS BALUSTRADE
12	METAL BALUSTRADE
13	PAINTED METAL C-CHANNEL TO BALCONY STRUCTURE
14	PROTRUDED METAL WINDOW FRAME
15	TIMBER DECKING
16	TIMBER FINISH TO BALCONY SOFFIT
17	CONCEALED RAINWATER PIPE
18	METAL GRILLS
19	INTAKE/EXTRACTION VENTS
20	RENDER FINISH PARAPET
21	METAL COPING

P: 1 Planning Submission 01.07.14 SHY GJ  
 Rev: Notes 06.mm.vj By: Chd

© KSR architects  
 Stamp: **PLANNING SUBMISSION**



**KSRARCHITECTS**  
 KSR Architects LLP  
 14 Goswell Street  
 London EC2A 4DF  
 Tel: +44 (0)20 7882 5000  
 Email: info@ksrarchitects.com  
 Website: www.ksrarchitects.com

Project:  
**CAMLEY STREET MIXED EMPLOYMENT AND RESIDENTIAL SCHEME**  
 Title:  
**DETAIL BAY STUDY B**

Date: JULY 2014 Drawn By: SHY Checked: GJ  
 Scale: As indicated @ A1 / 1:50 @ A3

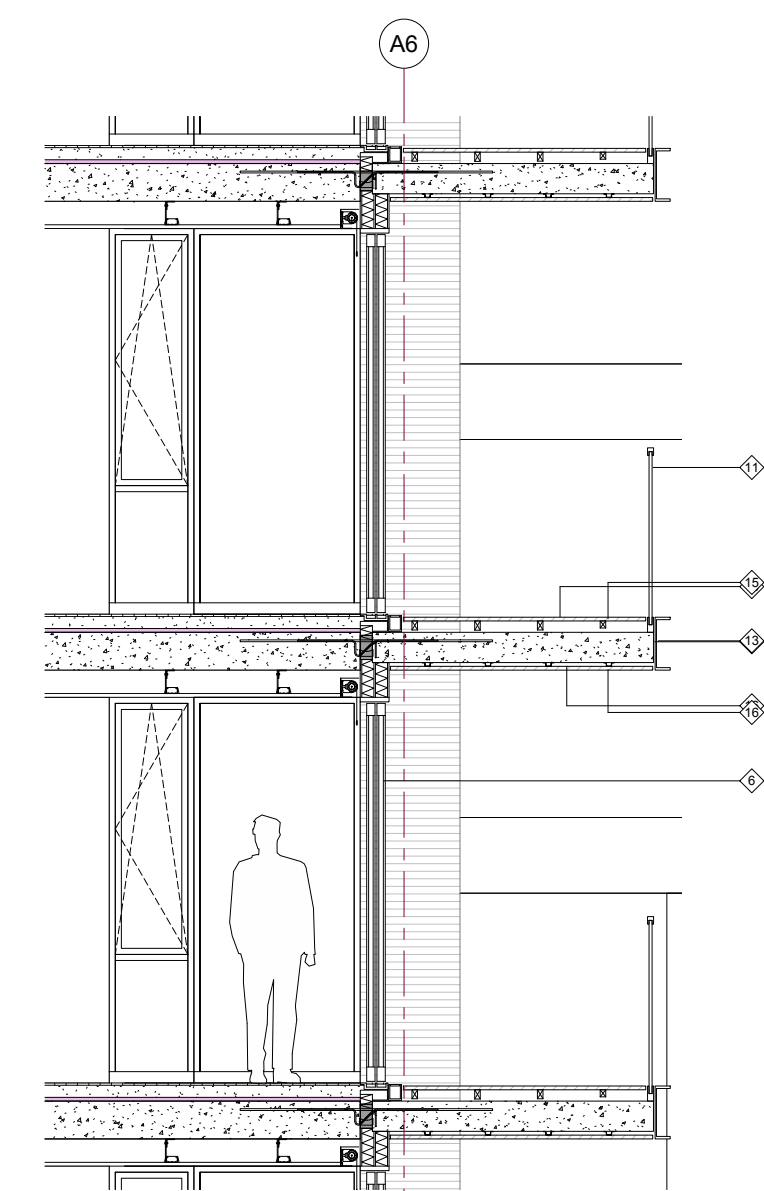
Project Ref: CML	Drawing No: CML - 331	Revision: P1
---------------------	--------------------------	-----------------



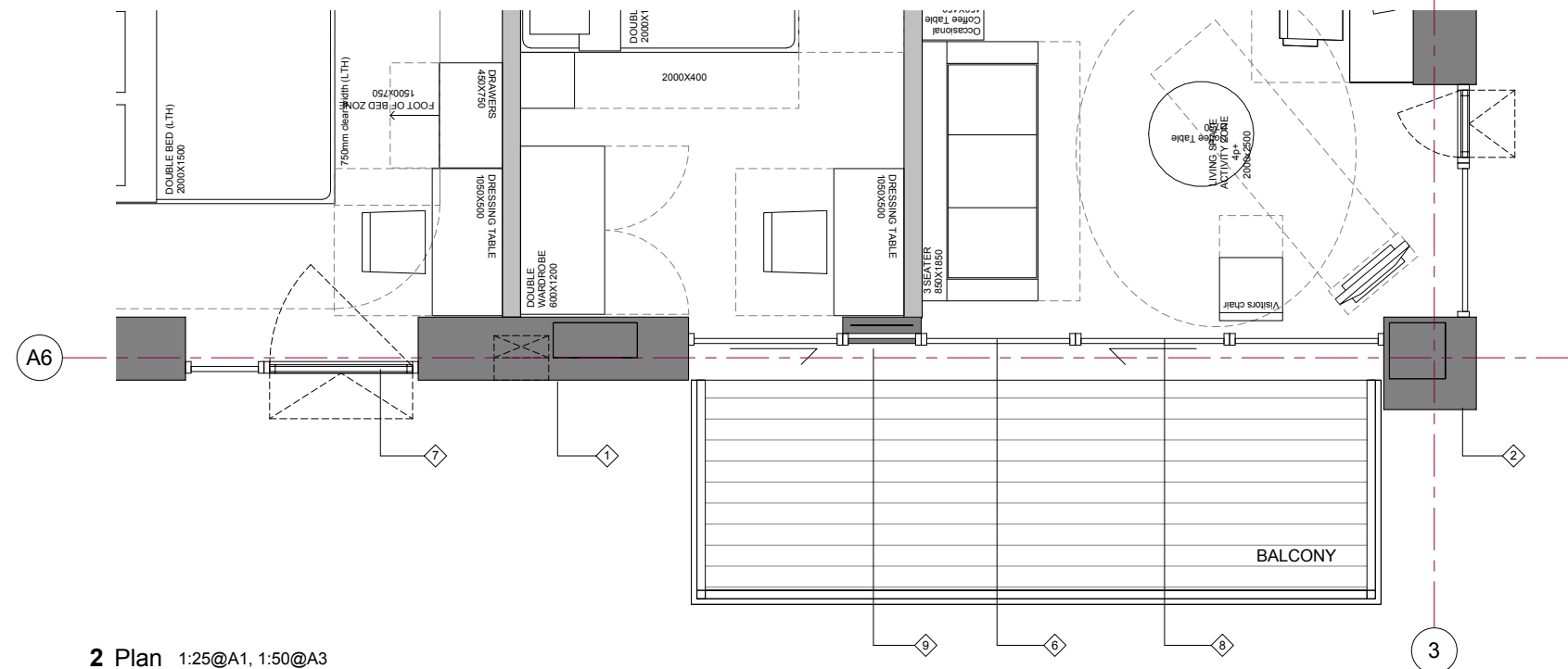




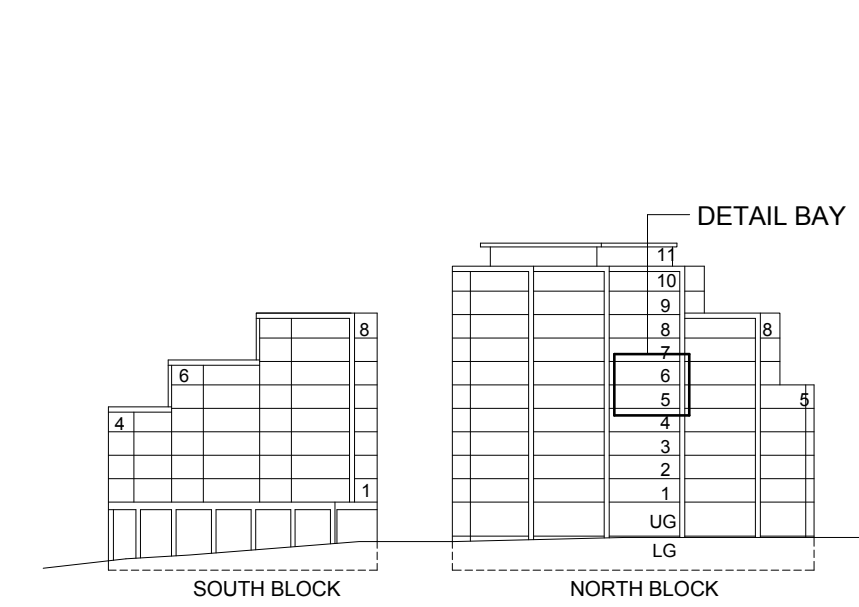
1 Elevation 1:25@A1, 1:50@A3



3 Section 1:25@A1, 1:50@A3



2 Plan 1:25@A1, 1:50@A3



Camley Street Key Elevation

General notes:  
 This drawing is copyright of KSR architects. This drawing must be read in conjunction with the Designer's Risk Assessment, specification and all other relevant documentation and drawings. KSR architects accept no liability for any expense, loss or damage of whatsoever nature and however arising from any variation made to this drawing or in the execution of the work to which it relates which has not been referred to them and their approval obtained.  
 Do not scale from this drawing or the digital data, only figured dimensions are to be used. For Planning refer to linear scale.  
 Check all dimensions on site prior to carrying out any works - advise any discrepancy

- Notes/Legends
- MATERIAL KEY**
- 1 GREY COLOURED BRICK
  - 2 GREY COLOURED BRICK FRAME
  - 3 SOLDIER COURSE GREY COLOURED BRICK ELEMENT
  - 4 CHAMFERED GREY COLOURED BRICK ELEMENT
  - 5 RETRACTABLE EXTERNAL VENETIAN BLIND
  - 6 FIXED DOUBLE GLAZED UNIT
  - 7 FULLY REVERSIBLE DOUBLE GLAZED UNIT
  - 8 ALUMINUM FRAMED DOUBLE GLAZED DOOR
  - 9 METAL SPANDREL PANEL
  - 10 COMMERCIAL STOREFRONT GLAZED UNIT
  - 11 CLEAR GLASS BALUSTRADE
  - 12 METAL BALUSTRADE
  - 13 PAINTED METAL C-CHANNEL TO BALCONY STRUCTURE
  - 14 PROTRUDED METAL WINDOW FRAME
  - 15 TIMBER DECKING
  - 16 TIMBER FINISH TO BALCONY SOFFIT
  - 17 CONCEALED RAINWATER PIPE
  - 18 METAL GRILLS
  - 19 INTAKE/EXTRACTION VENTS
  - 20 RENDER FINISH PARAPET
  - 21 METAL COPING

P.1 Planning Submission 01.07.14 SHY\_GJ

Rev: Notes 05.mm.yj By: CML

© KSR architects

Stamp: **PLANNING SUBMISSION**

Key Plan:

**KSRARCHITECTS**  
 KSR Architects LLP  
 14 Grosvenor Street  
 London W1R 0ND  
 info@ksrarchitects.com  
 t +44 (0)20 7882 5000  
 www.ksrarchitects.com

Project: **CAMLEY STREET MIXED EMPLOYMENT AND RESIDENTIAL SCHEME**

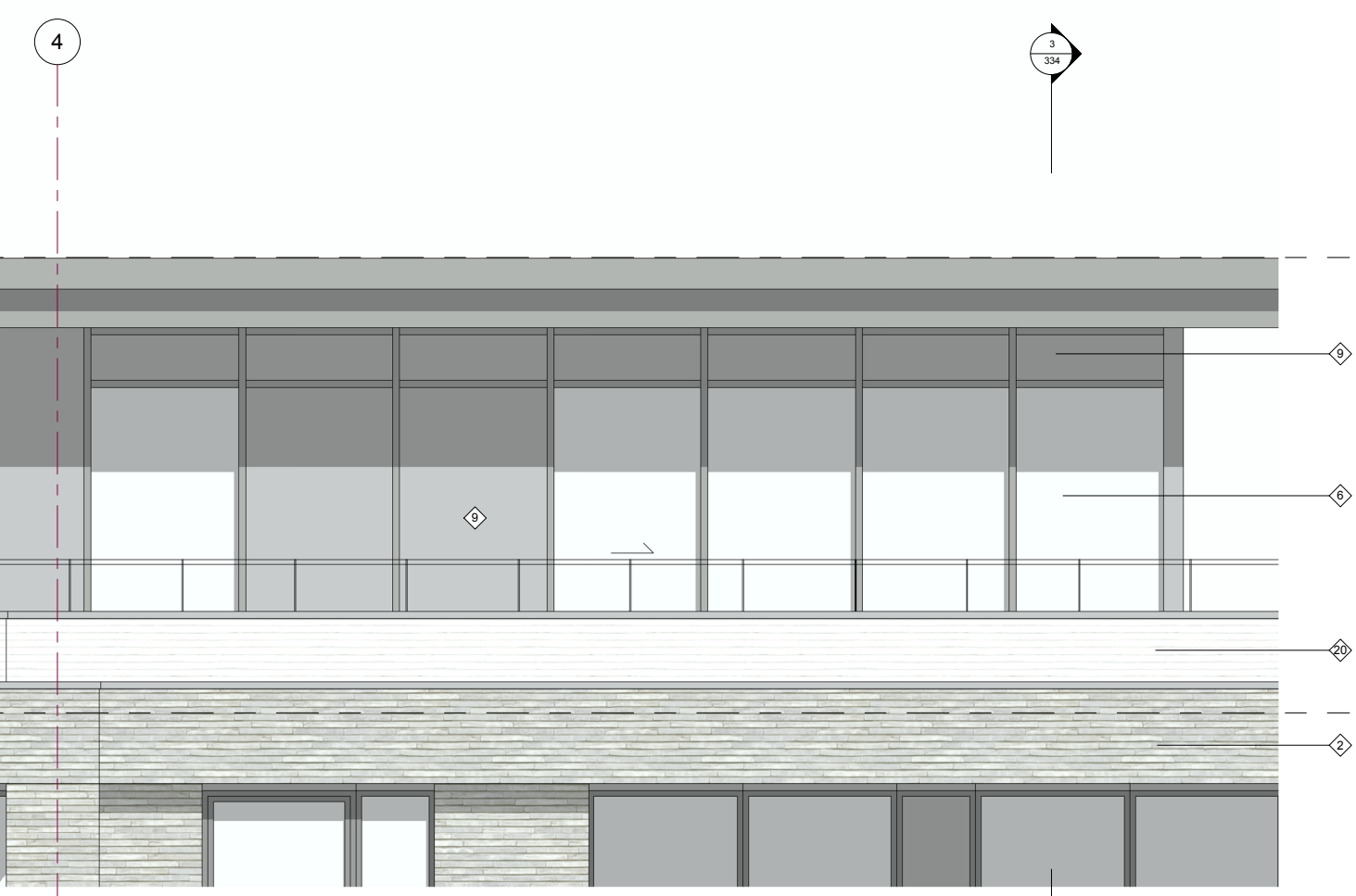
Title: **DETAIL BAY STUDY D**

Date: JULY 2014 Drawn By: SHY Checked: GJ

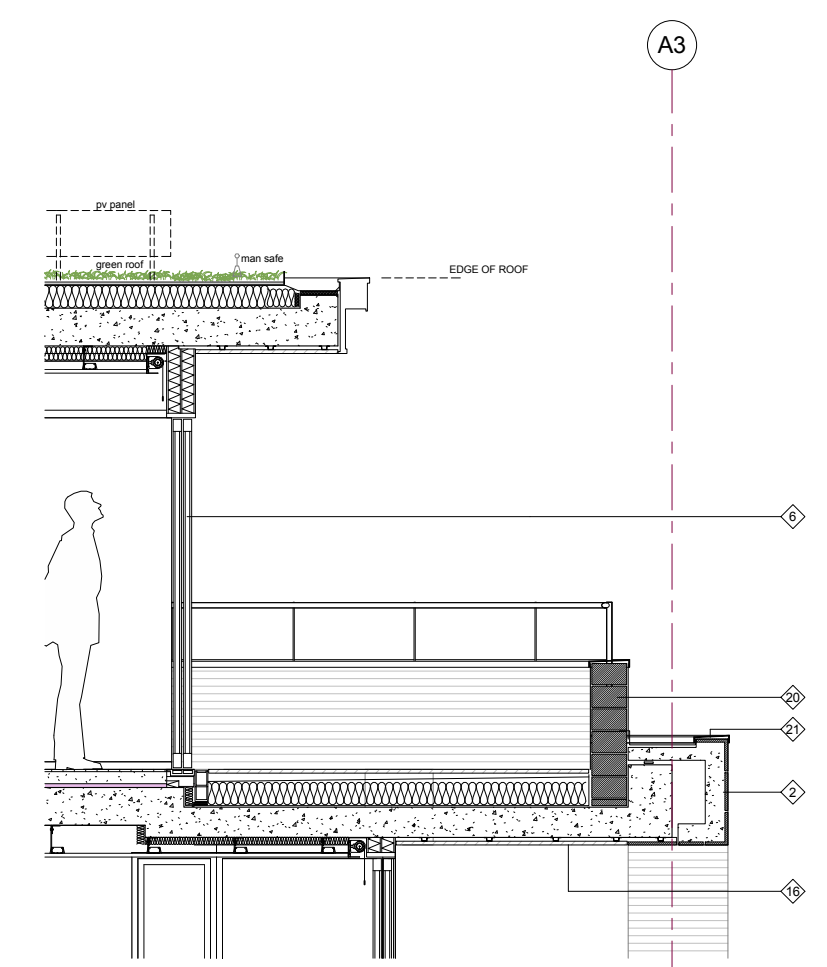
Scale: As indicated @ A1 / 1:50 @ A3

Project Ref: CML Drawing No: CML - 333 Revision: P1

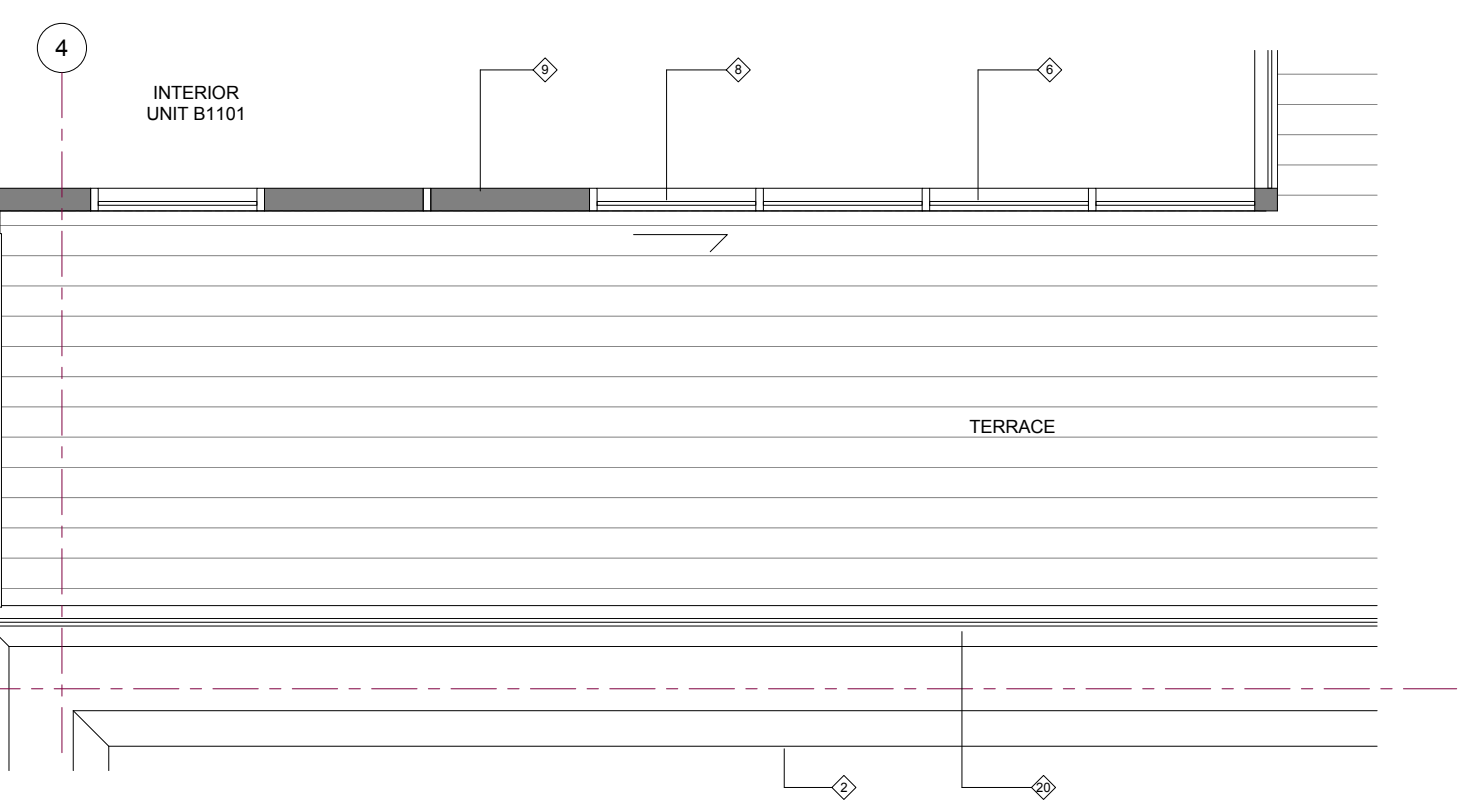




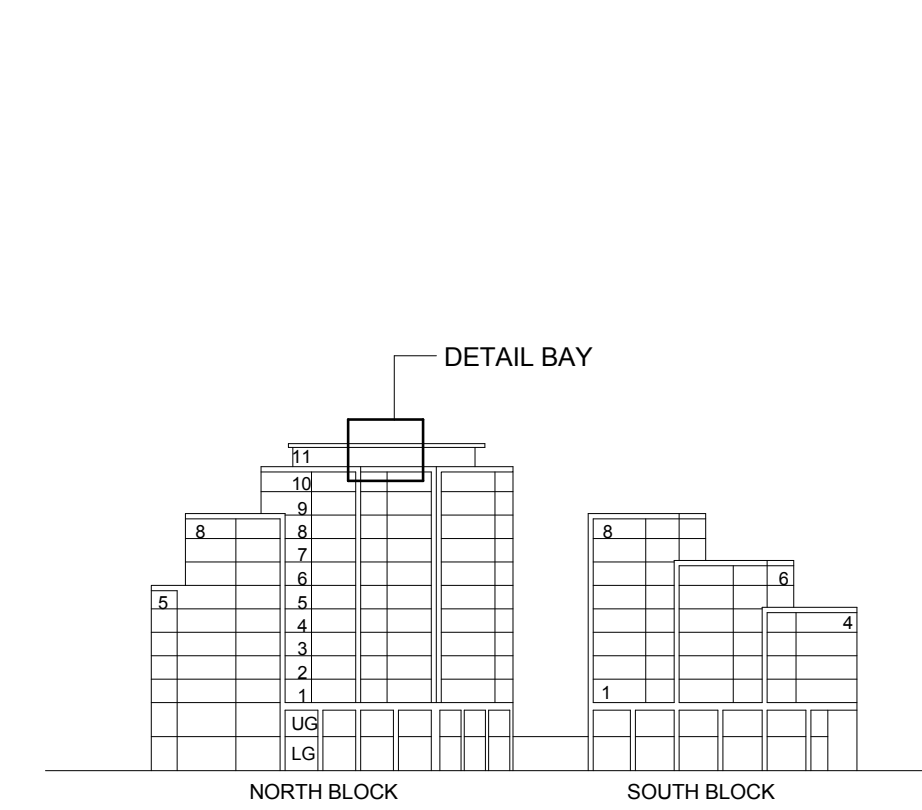
1 Elevation 1:25@A1, 1:50@A3



3 SECTION 25@A1, 1:50@A3



2 Plan 1:25@A1, 1:50@A3



Granary Street Key Elevation

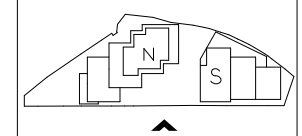
General notes:  
 This drawing is copyright of KSR architects. This drawing must be read in conjunction with the Designer's Risk Assessment, specification and all other relevant documentation and drawings. KSR architects accept no liability for any expense, loss or damage of whatsoever nature and however arising from any variation made to this drawing or in the execution of the work to which it relates which has not been referred to them and their approval obtained.  
 Do not scale from this drawing or the digital data, only figured dimensions are to be used. For Planning refer to linear scale.  
 Check all dimensions on site prior to carrying out any works - advise any discrepancy  
 Notes/Legends

**MATERIAL KEY**

1	GREY COLOURED BRICK
2	GREY COLOURED BRICK FRAME
3	SOLDIER COURSE GREY COLOURED BRICK ELEMENT
4	CHAMFERED GREY COLOURED BRICK ELEMENT
5	RETRACTABLE EXTERNAL VENETIAN BLIND
6	FIXED DOUBLE GLAZED UNIT
7	FULLY REVERSIBLE DOUBLE GLAZED UNIT
8	ALUMINUM FRAMED DOUBLE GLAZED DOOR
9	METAL SPANDREL PANEL
10	COMMERCIAL STOREFRONT GLAZED UNIT
11	CLEAR GLASS BALUSTRADE
12	METAL BALUSTRADE
13	PAINTED METAL C-CHANNEL TO BALCONY STRUCTURE
14	PROTRUDED METAL WINDOW FRAME
15	TIMBER DECKING
16	TIMBER FINISH TO BALCONY SOFFIT
17	CONCEALED RAINWATER PIPE
18	METAL GRILLS
19	INTAKE/EXTRACTION VENTS
20	RENDER FINISH PARAPET
21	METAL COPING

P: 1 Planning Submission 01.07.14 SHY GJ  
 Rev/ Notes 05 mm x3 By/ Chkd

© KSR architects  
 Stamp: **PLANNING SUBMISSION**



**KSRARCHITECTS**  
 KSR Architects LLP  
 14 Grosvenor Street  
 London W1R 0ND  
 info@ksrarchitects.com  
 t +44 (0)20 7882 5000  
 www.ksrarchitects.com

Project:  
**CAMLEY STREET MIXED EMPLOYMENT AND RESIDENTIAL SCHEME**  
 Title:  
**DETAIL BAY STUDY E**

Date: JULY 2014 Drawn By: SHY Checked: GJ  
 Scale: As indicated @ A1 / 1:50 @ A3

Project Ref: CML	Drawing No: CML - 334	Revision: P1
---------------------	--------------------------	-----------------