

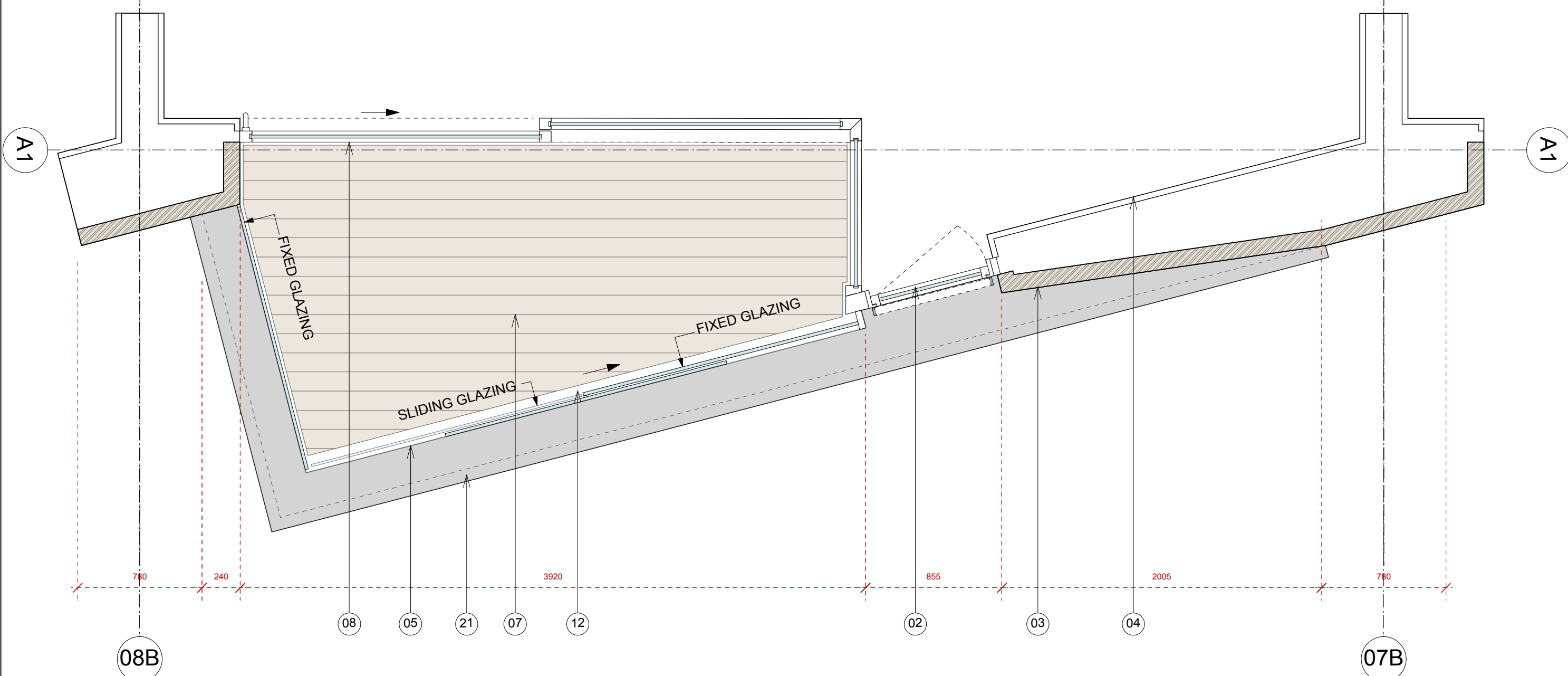
08B

07B



DETAIL ELEVATION

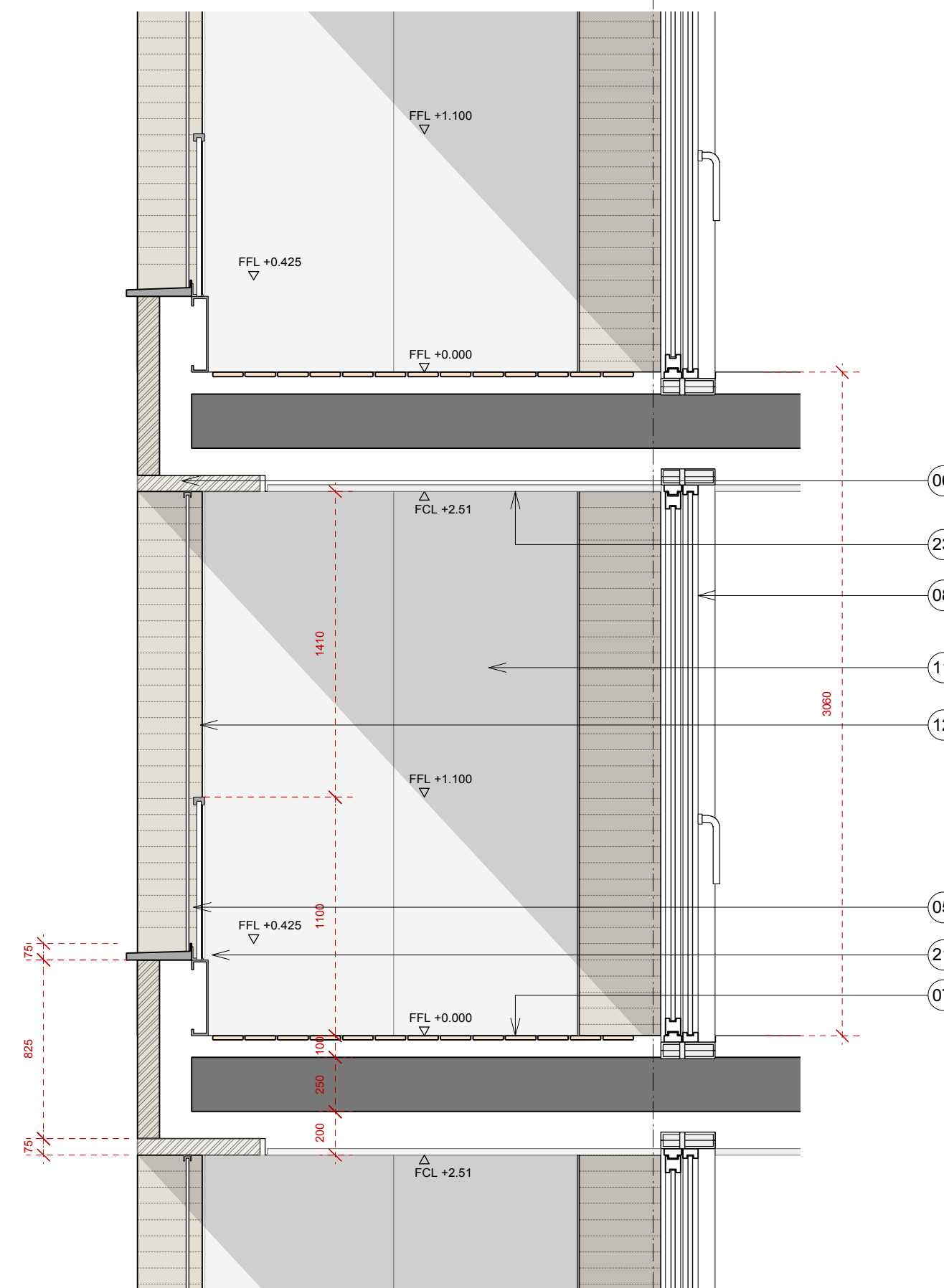
01 SAWTOOTH - EAST ELEVATION - 1:25



DETAIL PLAN

02 SAWTOOTH - EAST ELEVATION - 1:25

A1



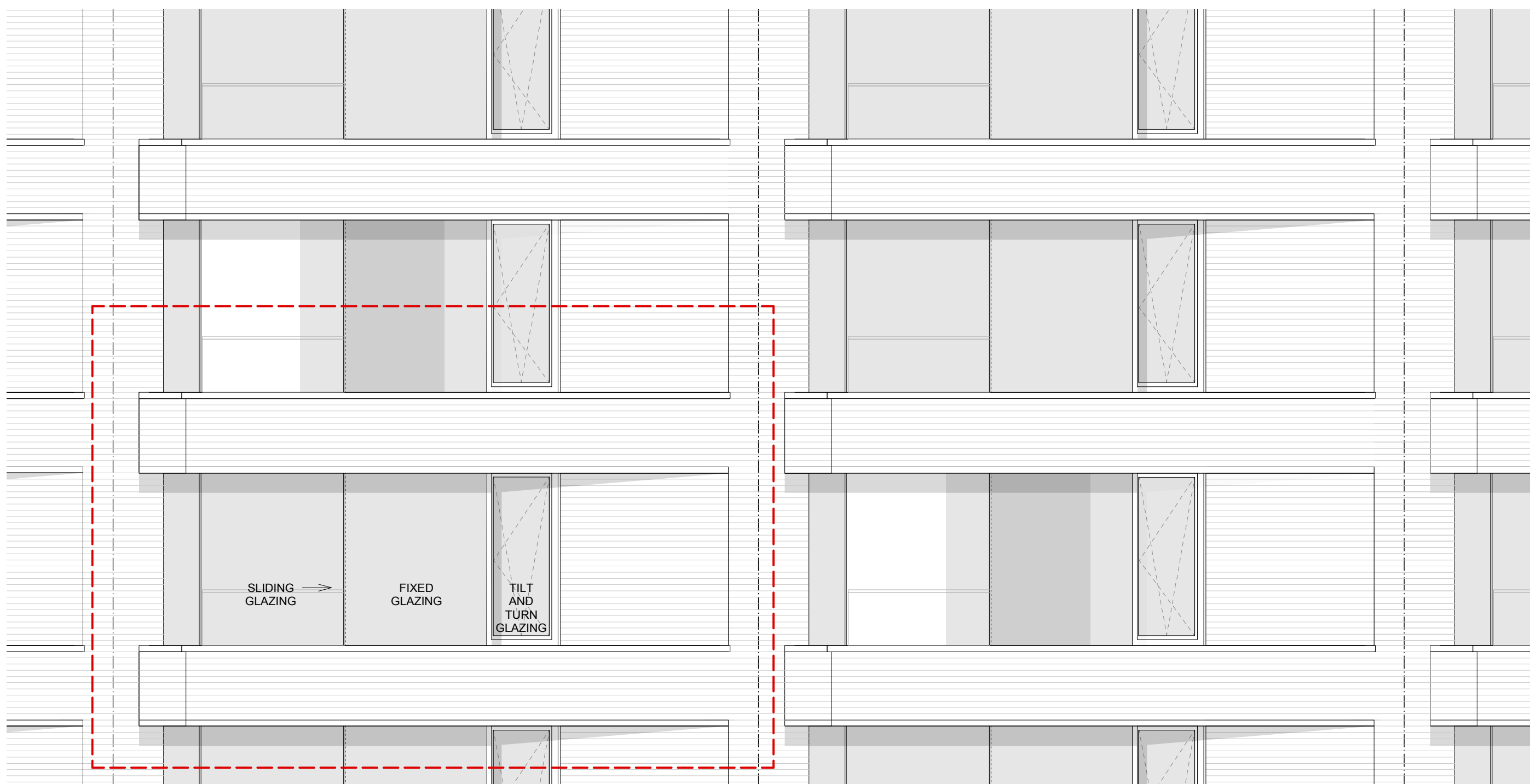
DETAIL SECTION

03 SAWTOOTH - EAST ELEVATION - 1:25

LEGEND

- 1. Double glazed bay window
- 2. Double glazed vent panel with metal balustrade rails fixed externally
- 3. Brickwork
- 4. Plasterboard in thermal wall lining
- 5. Glass balustrade with metal hand rail
- 6. Stone/ precast concrete header
- 7. Timber decking
- 8. Double glazed sliding window system
- 9. Precast concrete/ G.R.C. rainscreen panel
- 10. G.R.C. soffit - 30 mm
- 11. Fixed glass panel
- 12. Sliding glass panels
- 13. Glass balustrade
- 14. Pavers
- 15. Back painted glass panel
- 16. Running guide in hand rail
- 17. Frameless wintergarden glass panels on sliding gear suspended from above
- 18. Silicone jointed flush glazing
- 19. Opaque glass
- 20. Glass 1810mm double swing door
- 21. Metal cill
- 22. Glass privacy screen
- 23. Plasterboard ceiling
- 24. 75mm Metal channel recess

A1



GA ELEVATION

05 EAST ELEVATION - 1:50

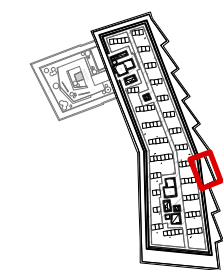
PLANNING

NOTES:
DIMENSIONS NOT TO BE SCALED FROM THIS DRAWING. CONTRACTORS TO NOTIFY ARCHITECTS OF SITE VARIATIONS AFFECTING INFORMATION ON THIS DRAWING. THIS DRAWING IS COPYRIGHT OF GLENN HOWELLS ARCHITECTS.

KEY

Date 30.06.14
Rev -
By AS
Details Planning Issue.

LOCATION KEY



GLENN HOWELLS ARCHITECTS
29 Maltings Place, 169 Tower Bridge Road, London, SE1 3JF
Tel. 0207 407 9915 F. 02074079914
mail@glennhowells.co.uk

Drawing Title
Facade Bay Study
East Elevation Sawtooth

Date 30.06.14
Scale 1:25@A1
1:50@A3
Checked RS

Project Ref. 1985
Drawing No. A-P-500
Revision -

Project 102 Camley Street
Client Regent Renewal Ltd.