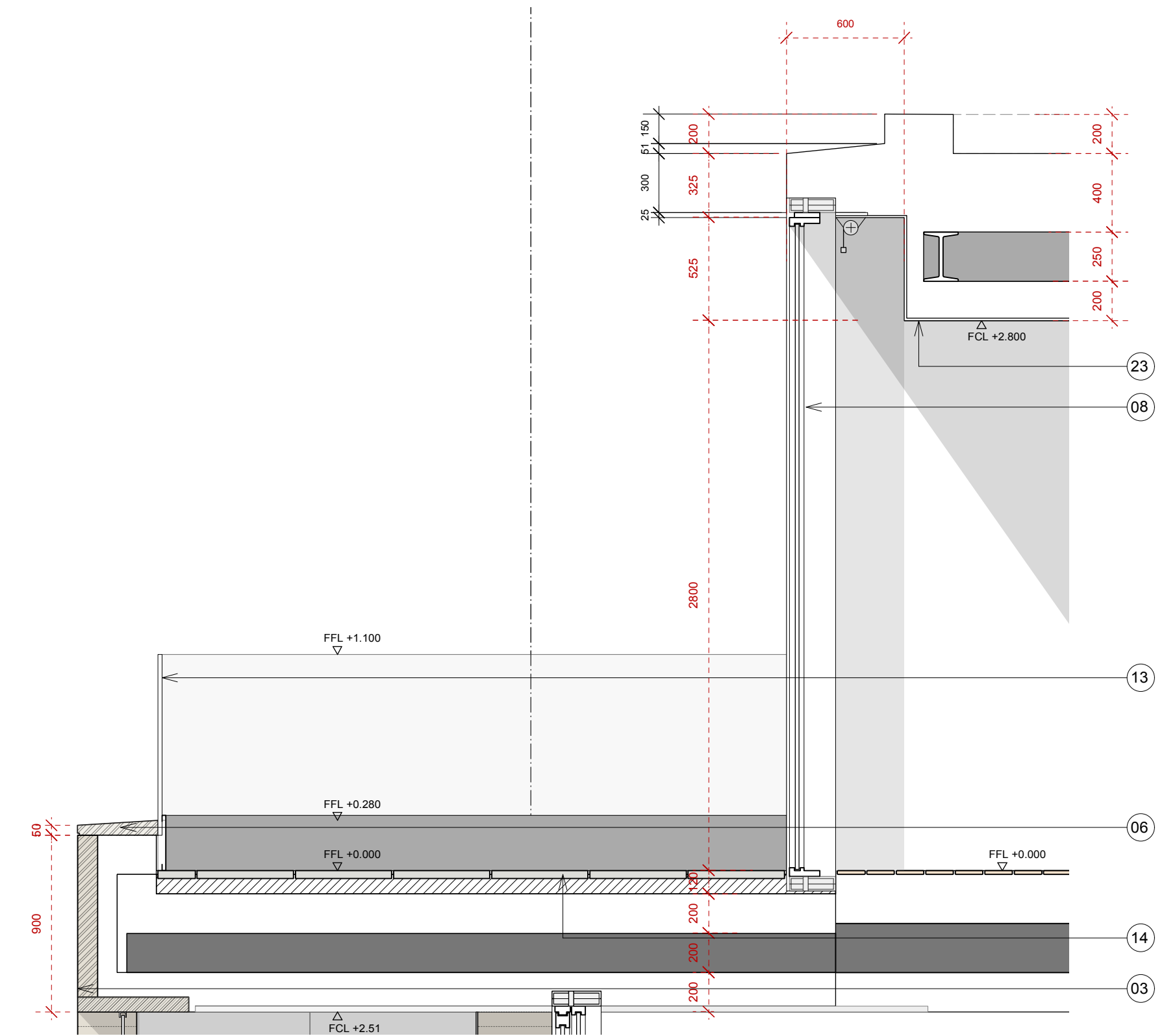


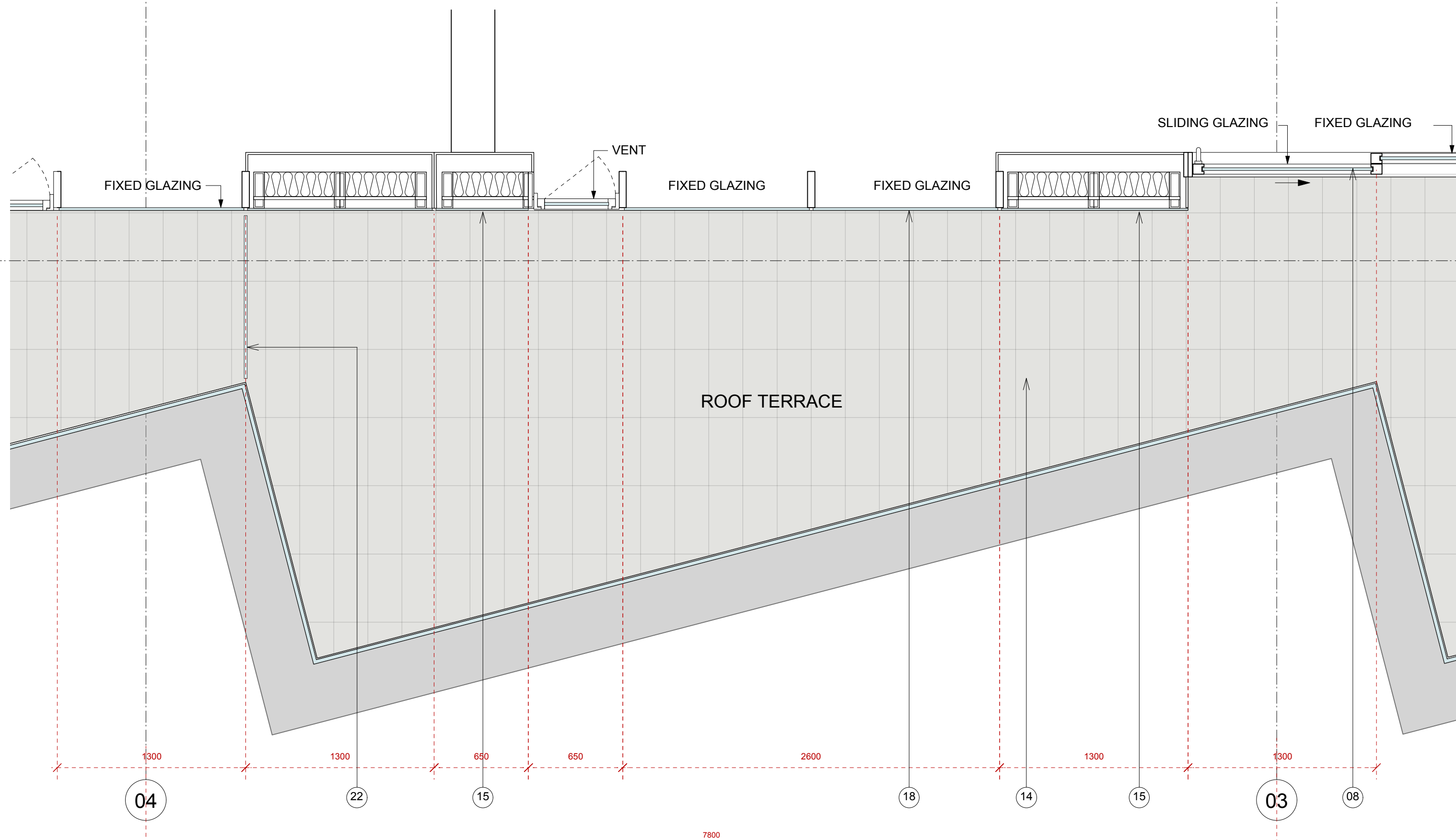


01
PENTHOUSE - EAST ELEVATION - 1:25

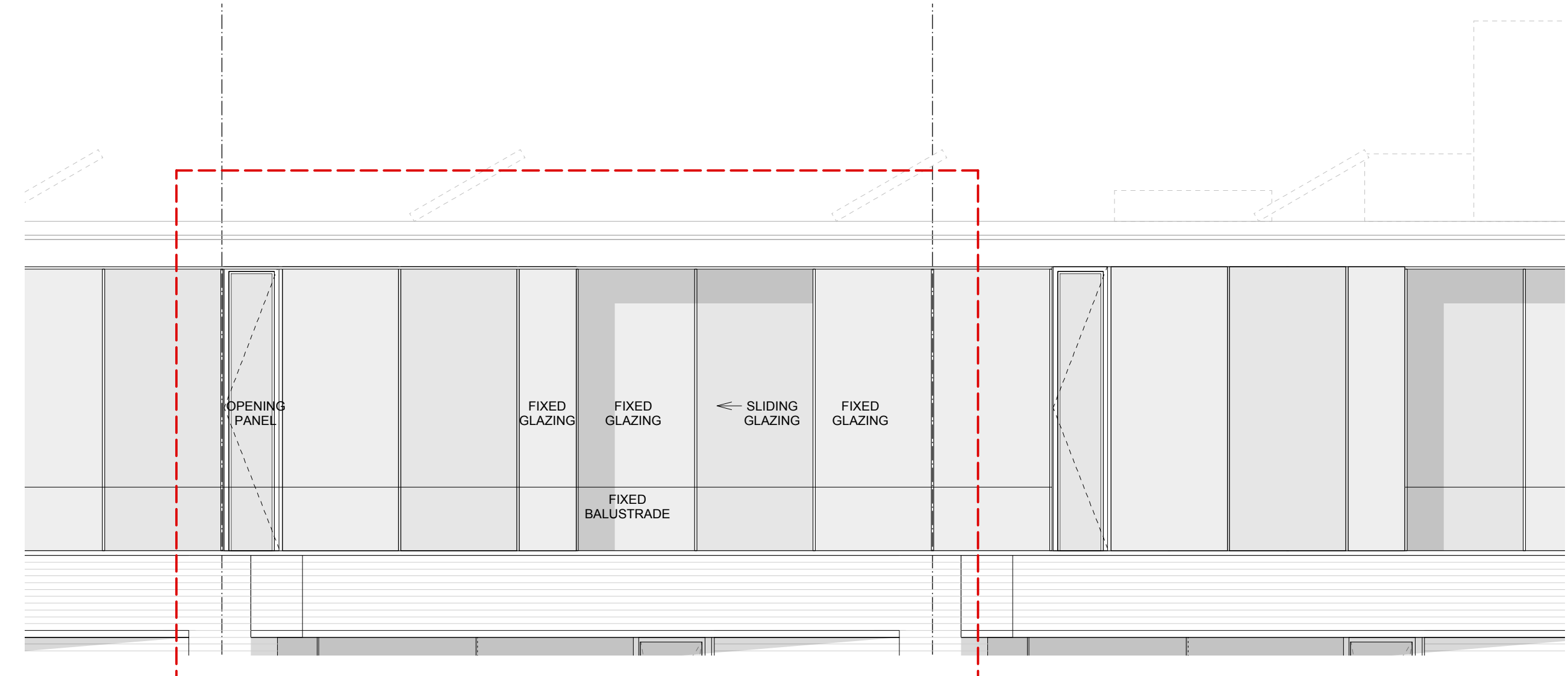


03
PENTHOUSE - EAST ELEVATION - 1:25

- LEGEND**
1. Double glazed bay window
 2. Double glazed vent panel with metal balustrade rails fixed externally
 3. Brickwork
 4. Plasterboard in thermal wall lining
 5. Glass balustrade with metal hand rail
 6. Stone/ precast concrete header
 7. Timber decking
 8. Double glazed sliding window system
 9. Precast concrete/ G.R.C. rainscreen panel
 10. G.R.C. soffit - 30 mm
 11. Fixed glass panel
 12. Sliding glass panels
 13. Glass balustrade
 14. Pavers
 15. Back painted glass panel
 16. Running guide in hand rail
 17. Frameless wintergarden glass panels on sliding gear suspended from above
 18. Silicone jointed flush glazing
 19. Opaque glass
 20. Glass 1810mm double swing door
 21. Metal cill
 22. Glass privacy screen
 23. Plasterboard ceiling
 24. 75mm Metal channel recess



01
PENTHOUSE - EAST ELEVATION - 1:25

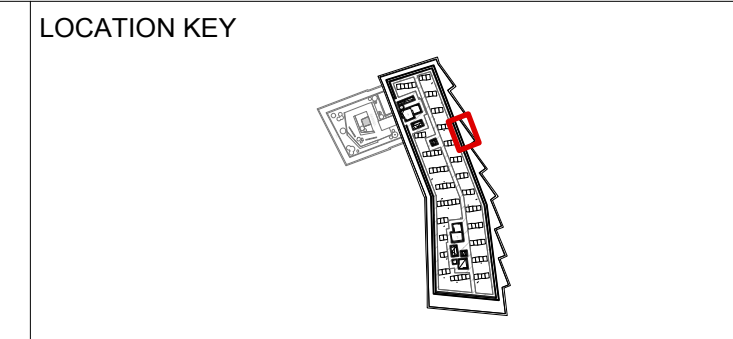


05
PENTHOUSE - EAST ELEVATION - 1:50

NOTES:
DIMENSIONS NOT TO BE SCALED FROM THIS DRAWING. CONTRACTORS TO NOTIFY ARCHITECTS OF SITE VARIATIONS AFFECTING INFORMATION ON THIS DRAWING. THIS DRAWING IS COPYRIGHT OF GLENN HOWELLS ARCHITECTS.

Date	Rev	By	Details
30.06.14	-	AS	Planning Issue.

Project Ref.	1985	Drawing No.	A-P-501	Revision	-
Project	102 Camley Street	Client	Regent Renewal Ltd.		



GLENN HOWELLS ARCHITECTS
29 Maltings Place, 169 Tower Bridge Road, London, SE1 3JF
Tel. 0207 407 9915 F. 02074079914
mail@glennhowells.co.uk

Date	30.06.14	Scale	1:25@A1 1:50@A3	Checked	RS
Drawing Title	Facade Bay Study East Elevation Penthouse	Project	102 Camley Street	Client	Regent Renewal Ltd.

PLANNING