



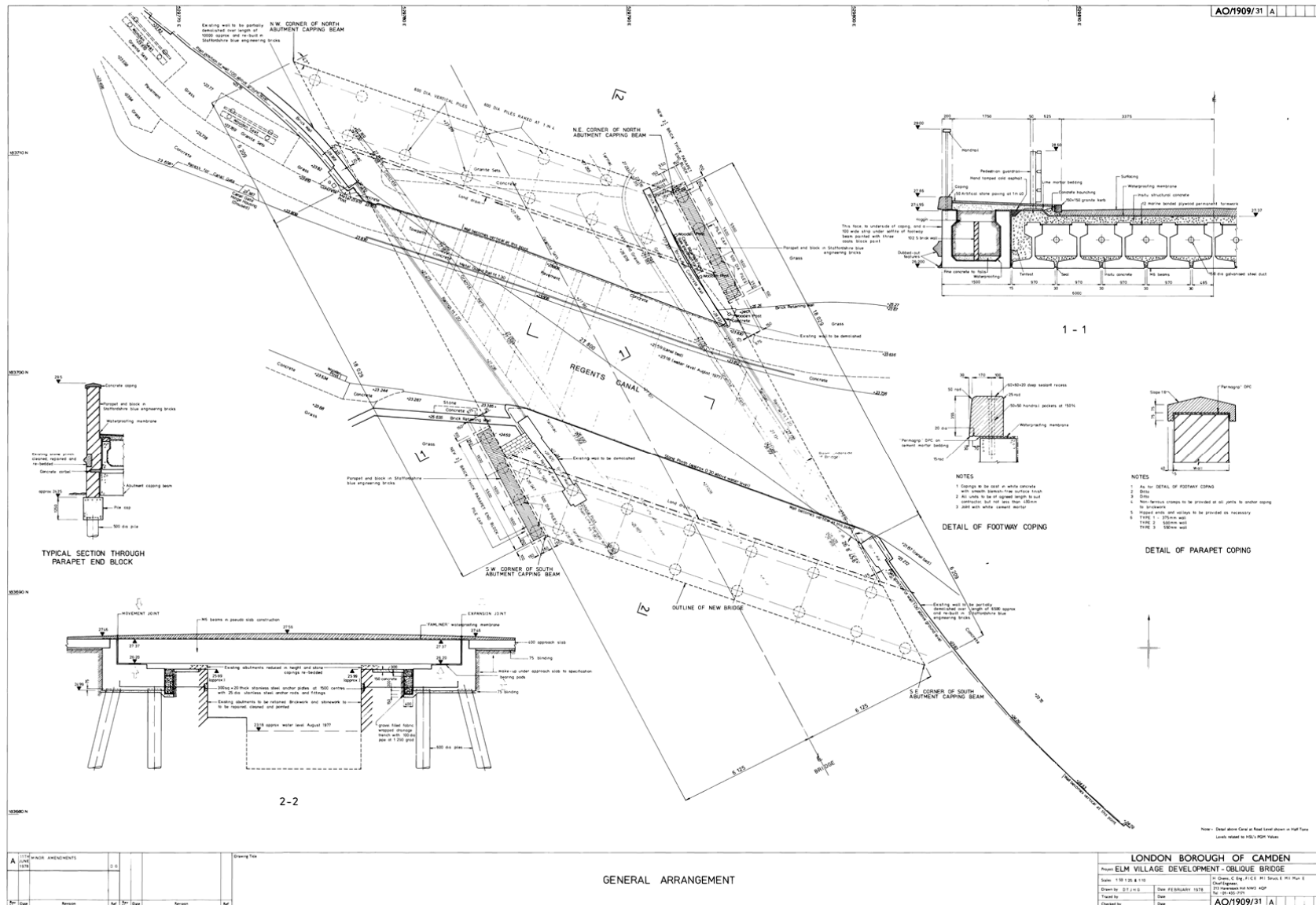
ARUP

102 CAMLEY STREET

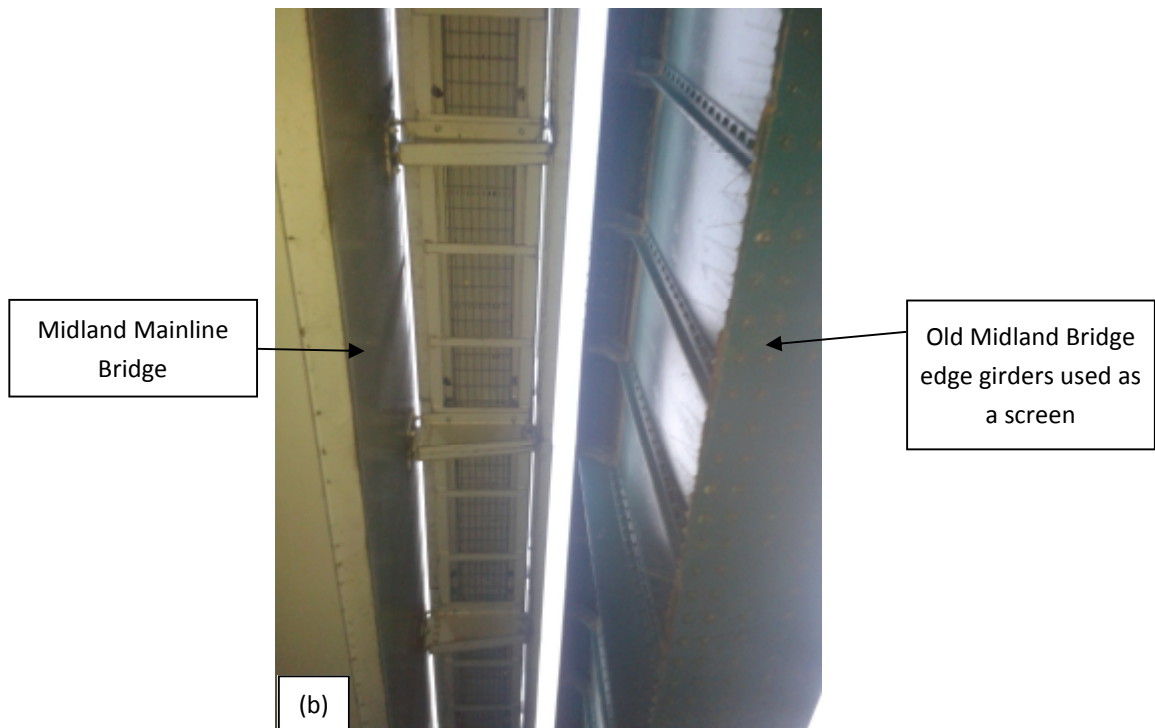
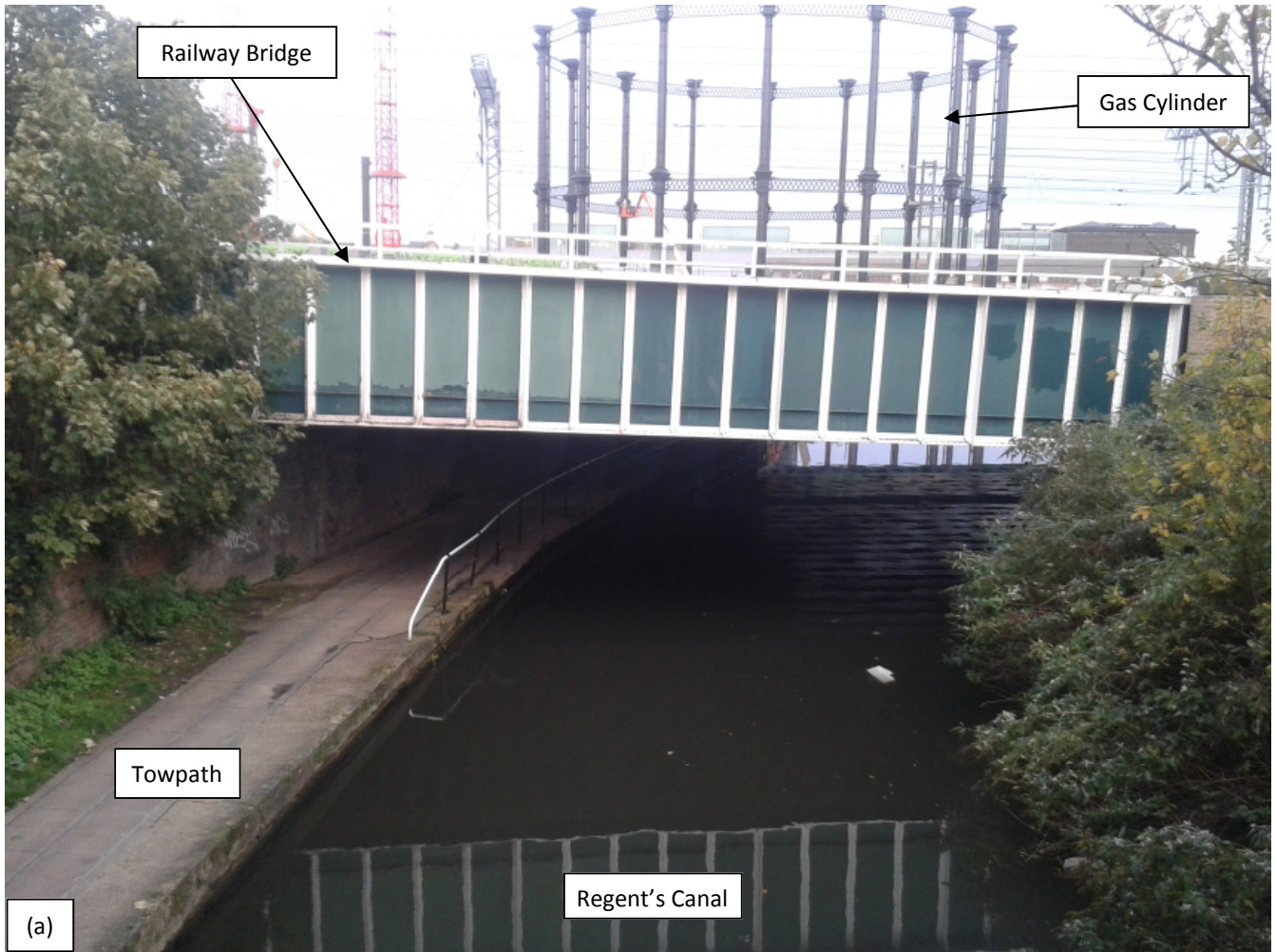
PHOTOGRAPH OF THE OBLIQUE BRIDGE

234937-00

FIGURE 18







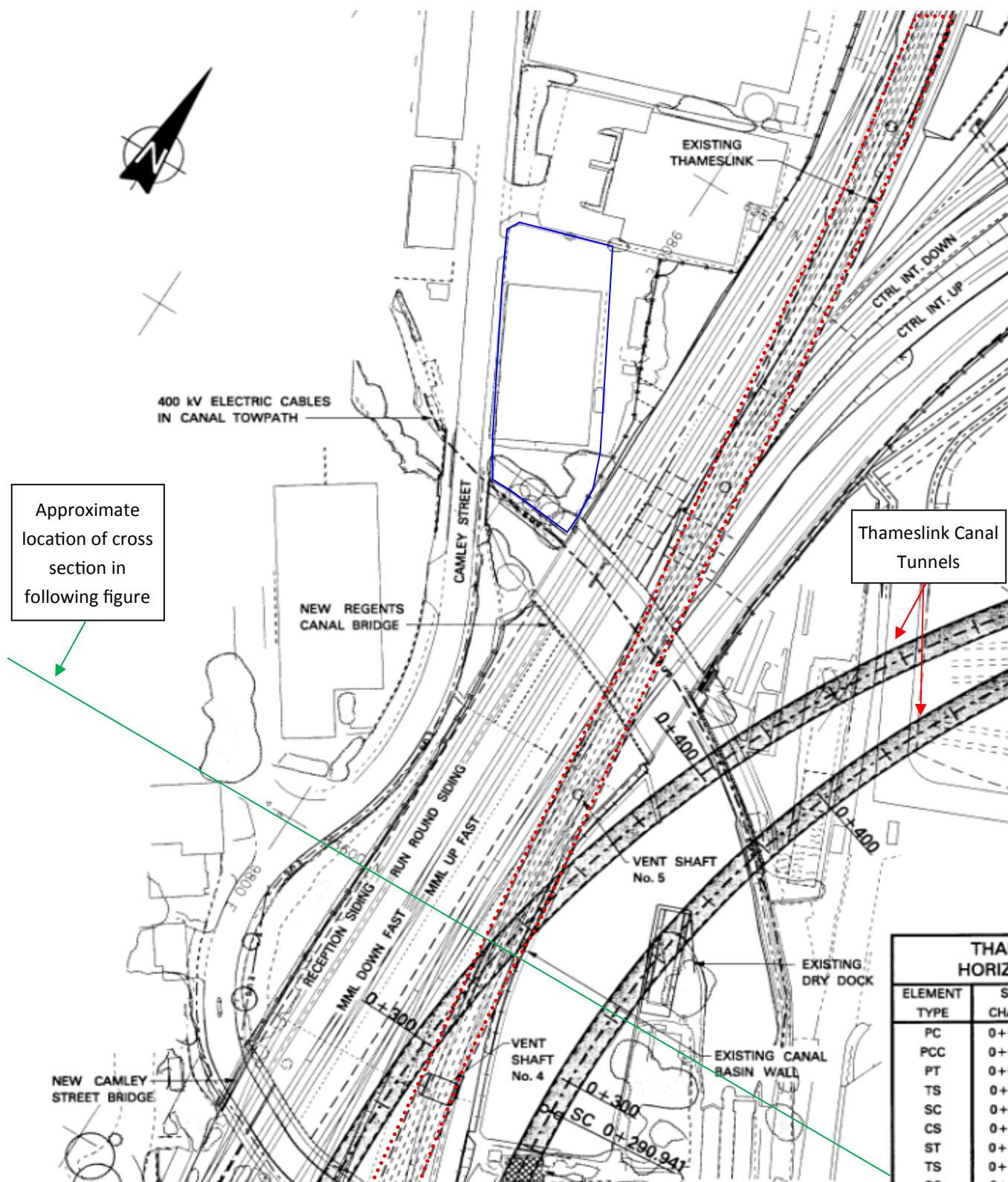
ARUP

102 CAMLEY STREET

PHOTOGRAPHS OF THE RAILWAY BRIDGE

234937-00

FIGURE 20



Source: CTRL Drawing Number 103-DTB-06850-95510-Z0

ARUP

Site Outline  
Tunnel Outline

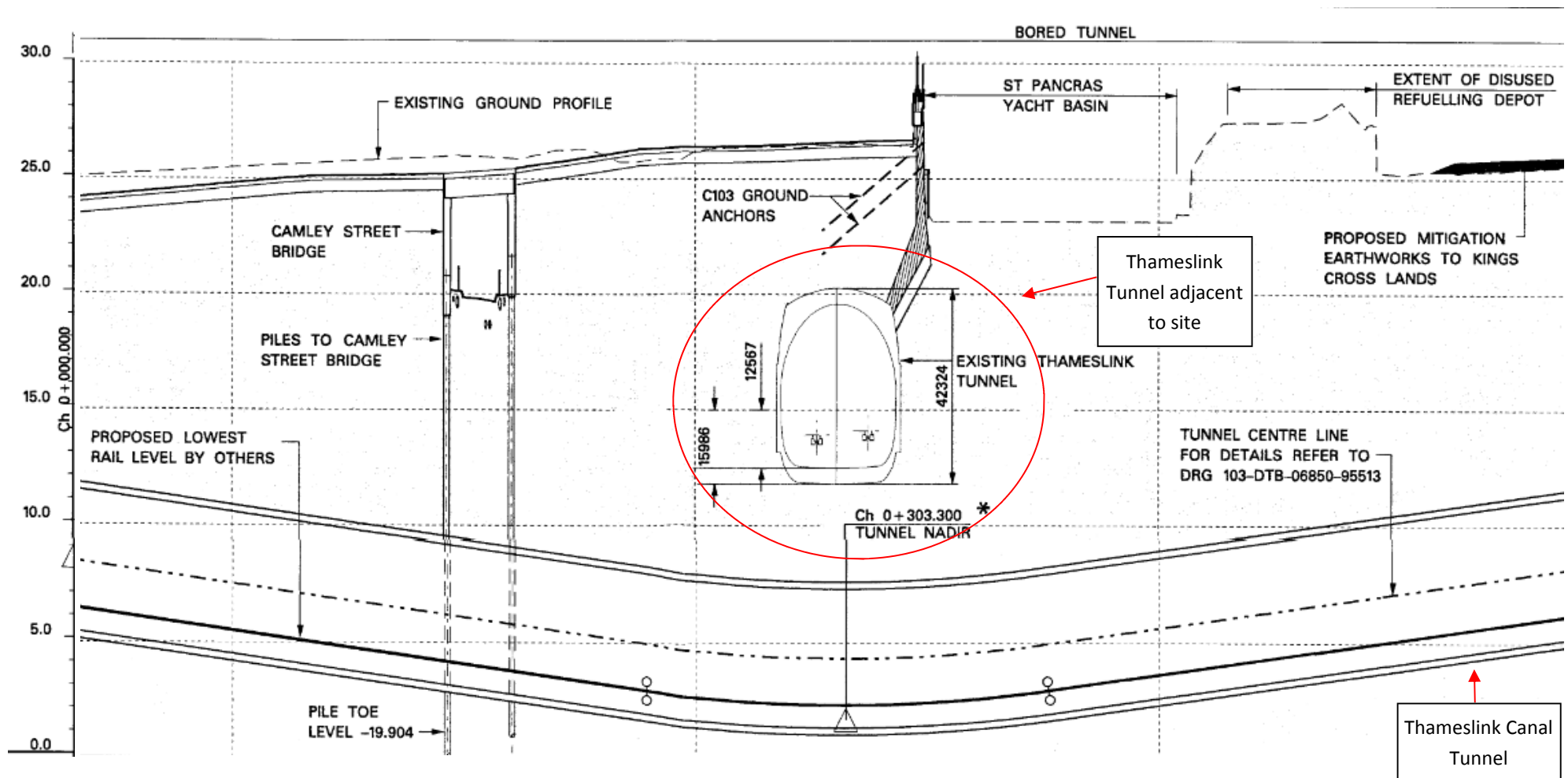
102 CAMLEY STREET

TUNNEL ADJACENT TO 102 CAMLEY STREET

234937-00

FIGURE 21





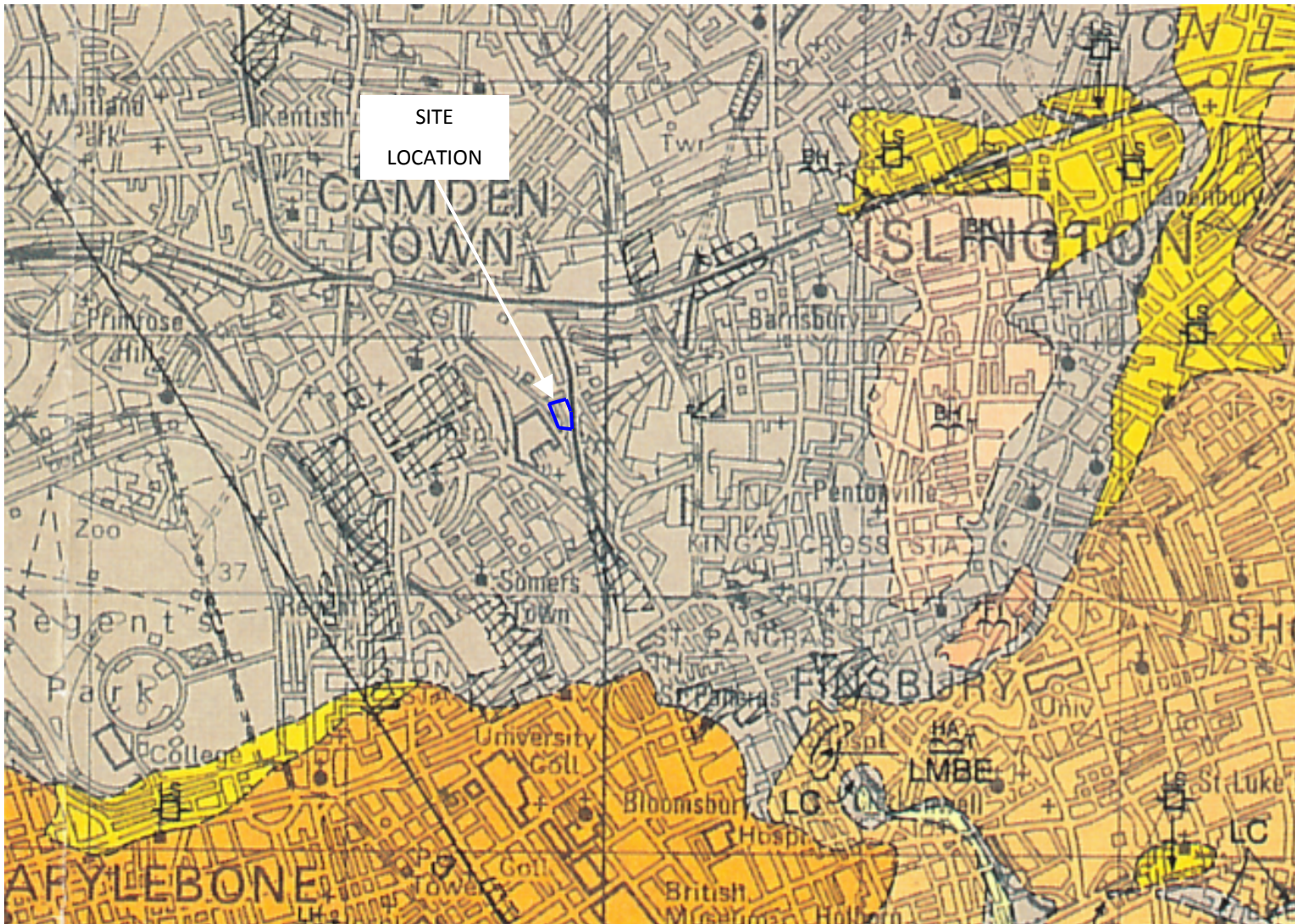
Source: CTRL Drawing Number 103-DTB-06850-95511-Z0

102 CAMLEY STREET  
CROSS SECTION THROUGH THAMESLINK SOUTH OF SITE

234937-00

FIGURE 22

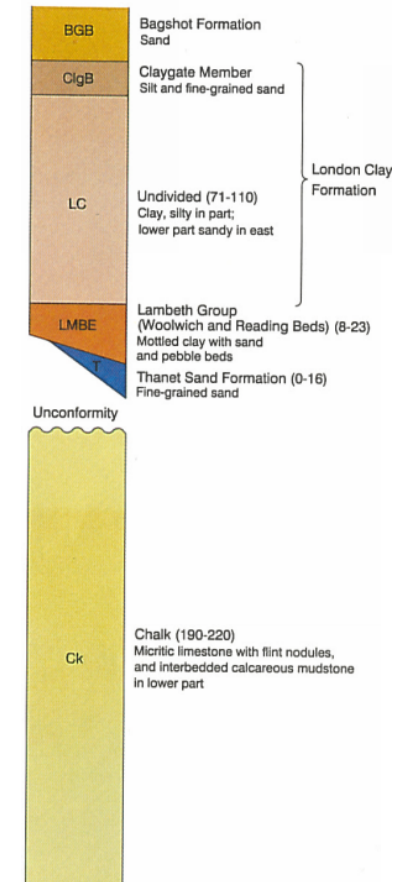
ARUP



1994 British Geological Survey © NERC. All rights reserved

# GENERALISED VERTICAL SECTION

Scale 1:2500 (1cm to 25m)



**102 CAMLEY STREET**

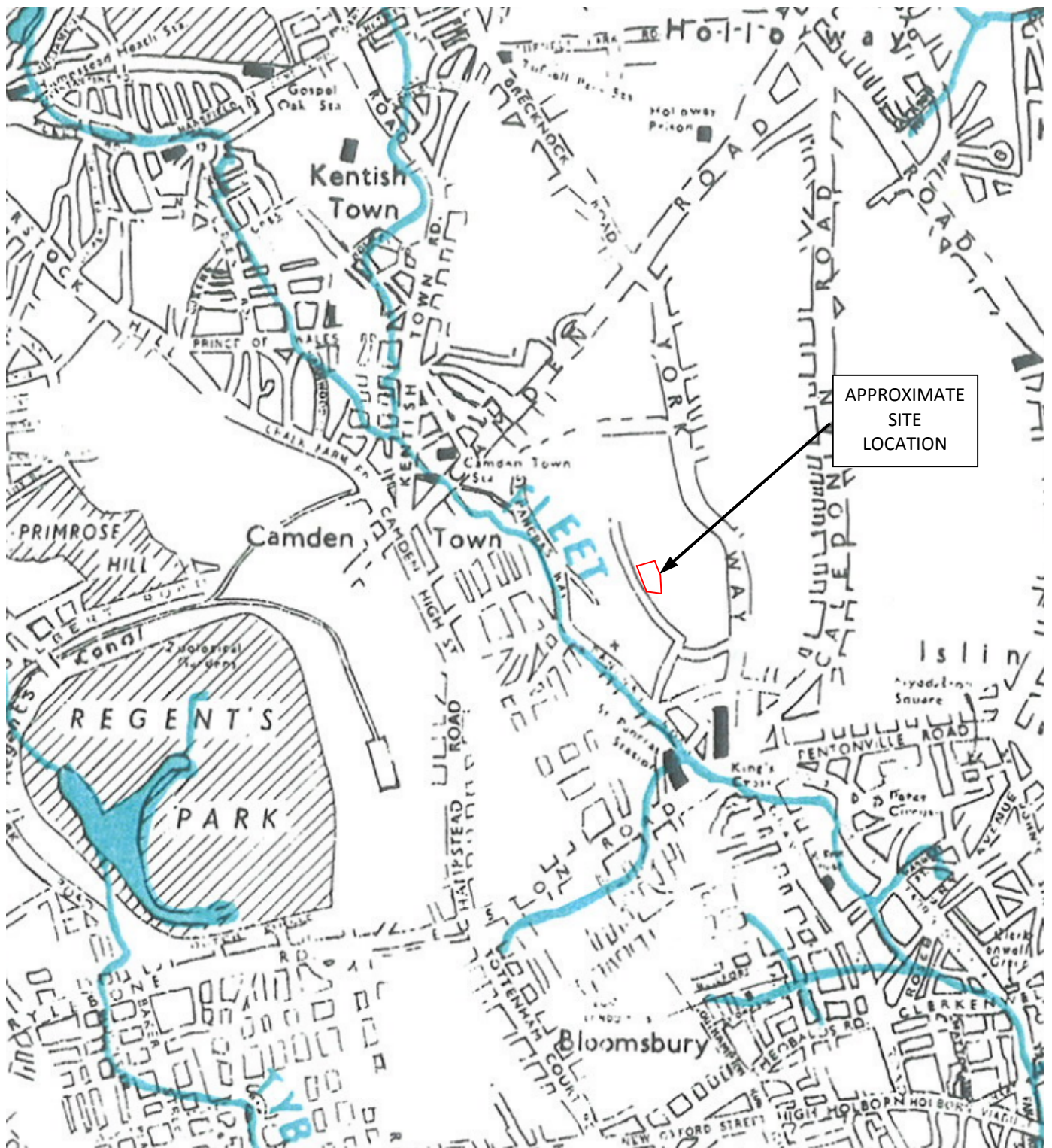
**GEOLOGICAL MAP**

**ARUP**

**234937-00**

**FIGURE 23**





ARUP

102 CAMLEY STREET

EXCERPT FROM THE LOST RIVERS OF  
LONDON

234937-00

FIGURE 24





ARUP

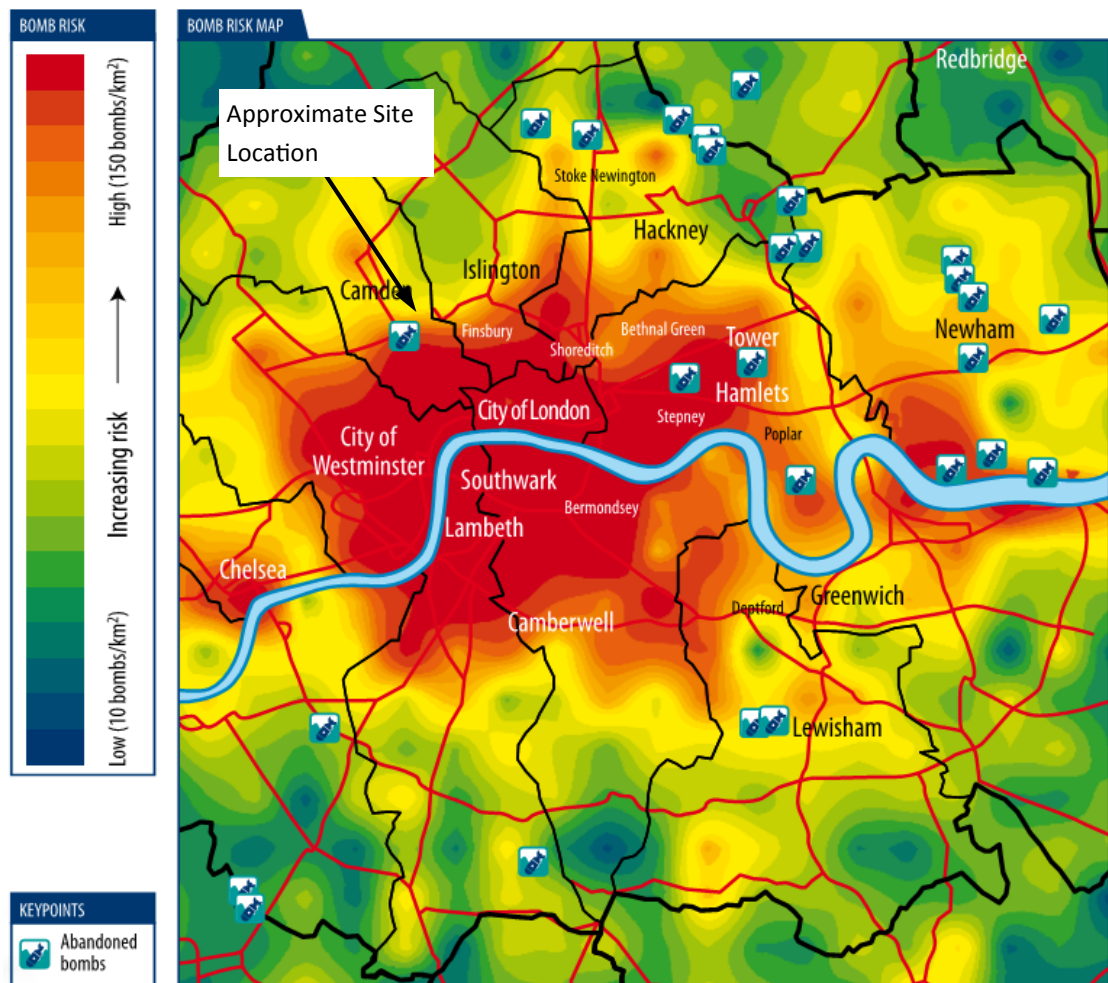
102 CAMLEY STREET

PHOTOGRAPHS OF FOOTINGS OUTSIDE  
WAREHOUSE ON 102 CAMLEY STREET

234937-00

FIGURE 25



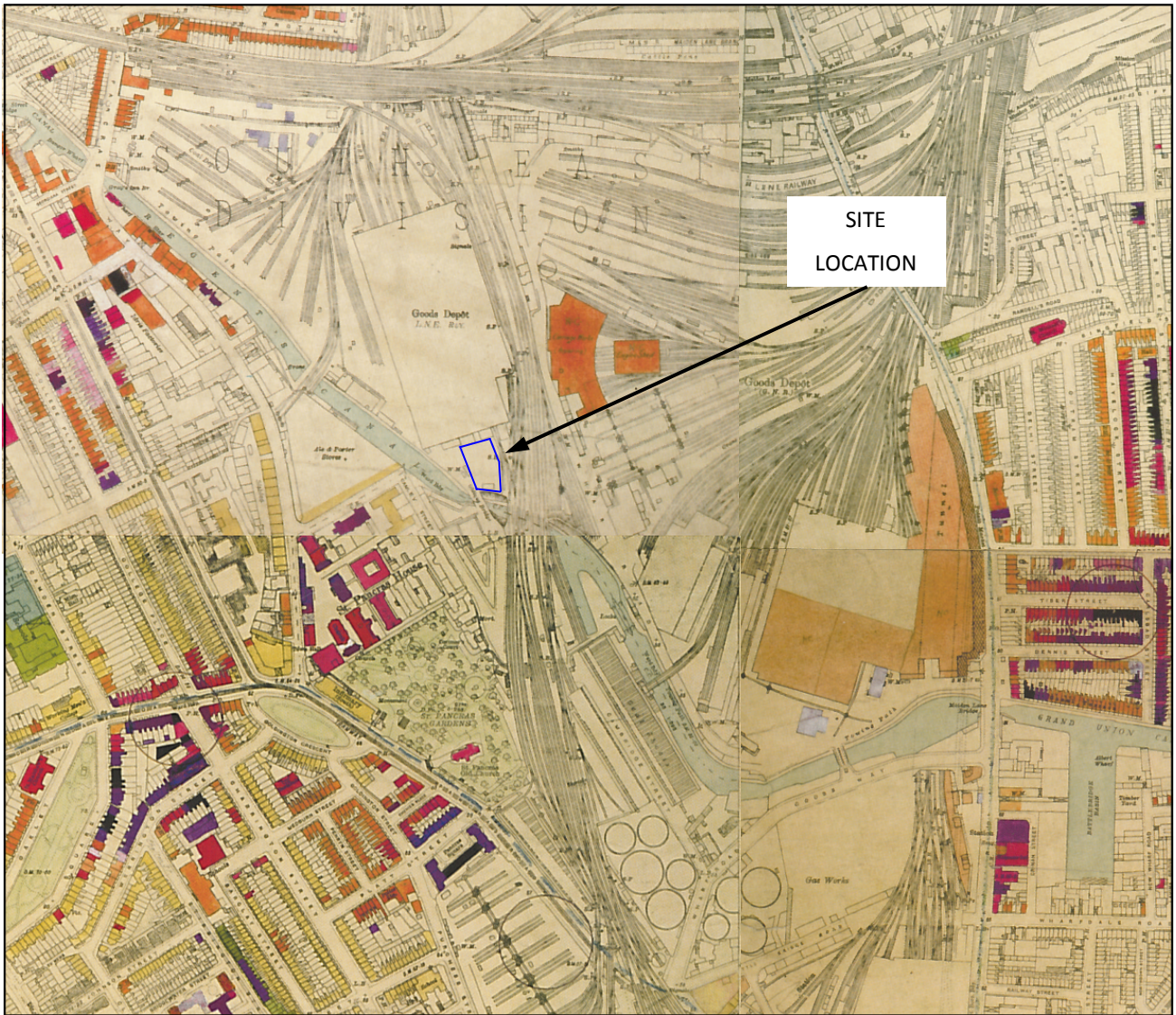


ARUP

102 CAMLEY STREET  
BOMB RISK MAP

234937-00

FIGURE 26



**Colour Key  
References**  
*(for guidance only)*

**Black**  
Total  
destruction

**Purple**  
Damaged beyond  
repair

**Dark Red**  
Seriously damaged;  
doubtful if  
repairable

**Light Red**  
Seriously damaged,  
but repairable  
at cost

**Orange**  
General blast  
damage – not  
structural

**Yellow**  
Blast damage,  
minor in nature

**Light Blue**  
Clearance  
areas

**Light Green**  
Clearance  
areas



V1 flying bomb



V2 long  
range rocket

ARUP

102 CAMLEY STREET

EXCERPT FROM BOMB DAMAGE  
MAPS FOR LONDON

234937-00

FIGURE 27