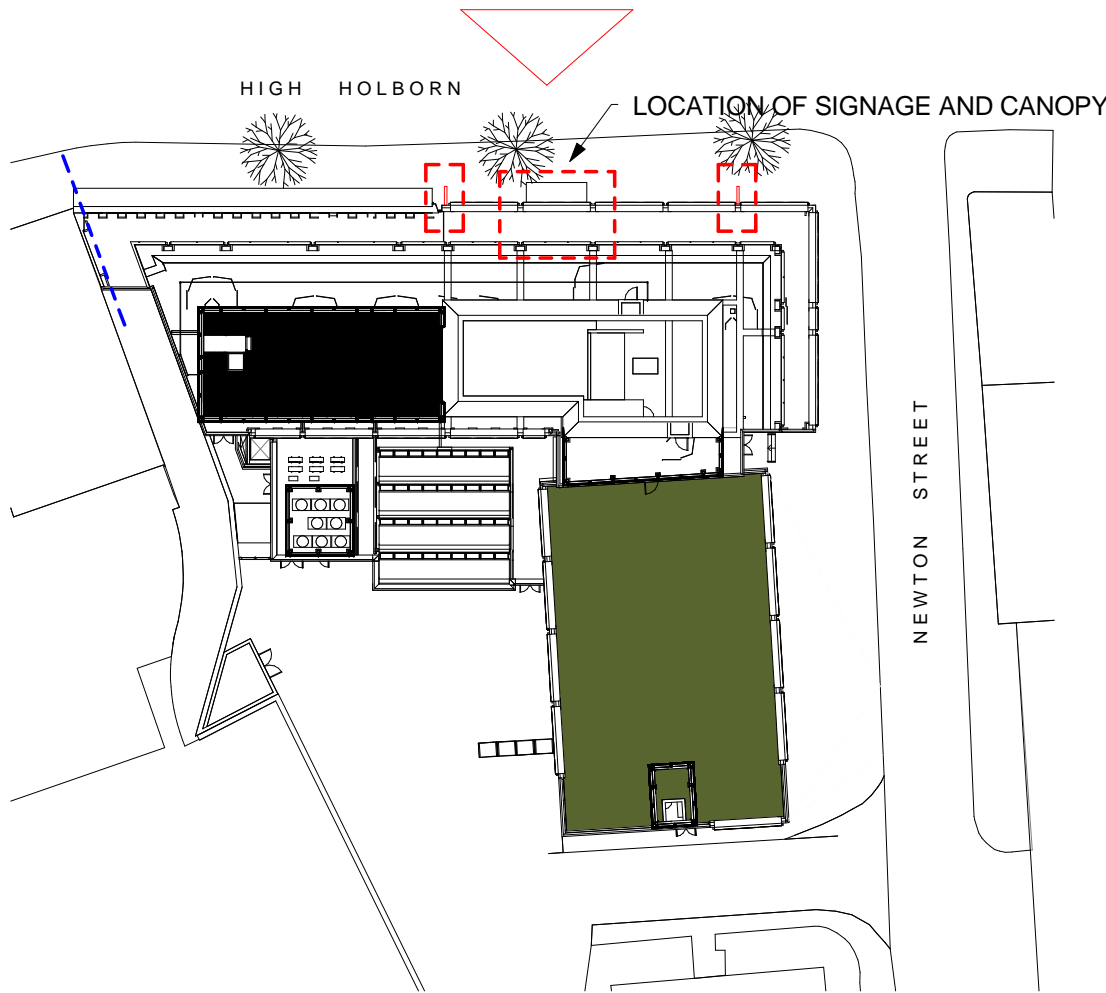


Responsibility is not accepted for errors made by others in scaling from this drawing. All construction information should be taken from figured dimensions only.

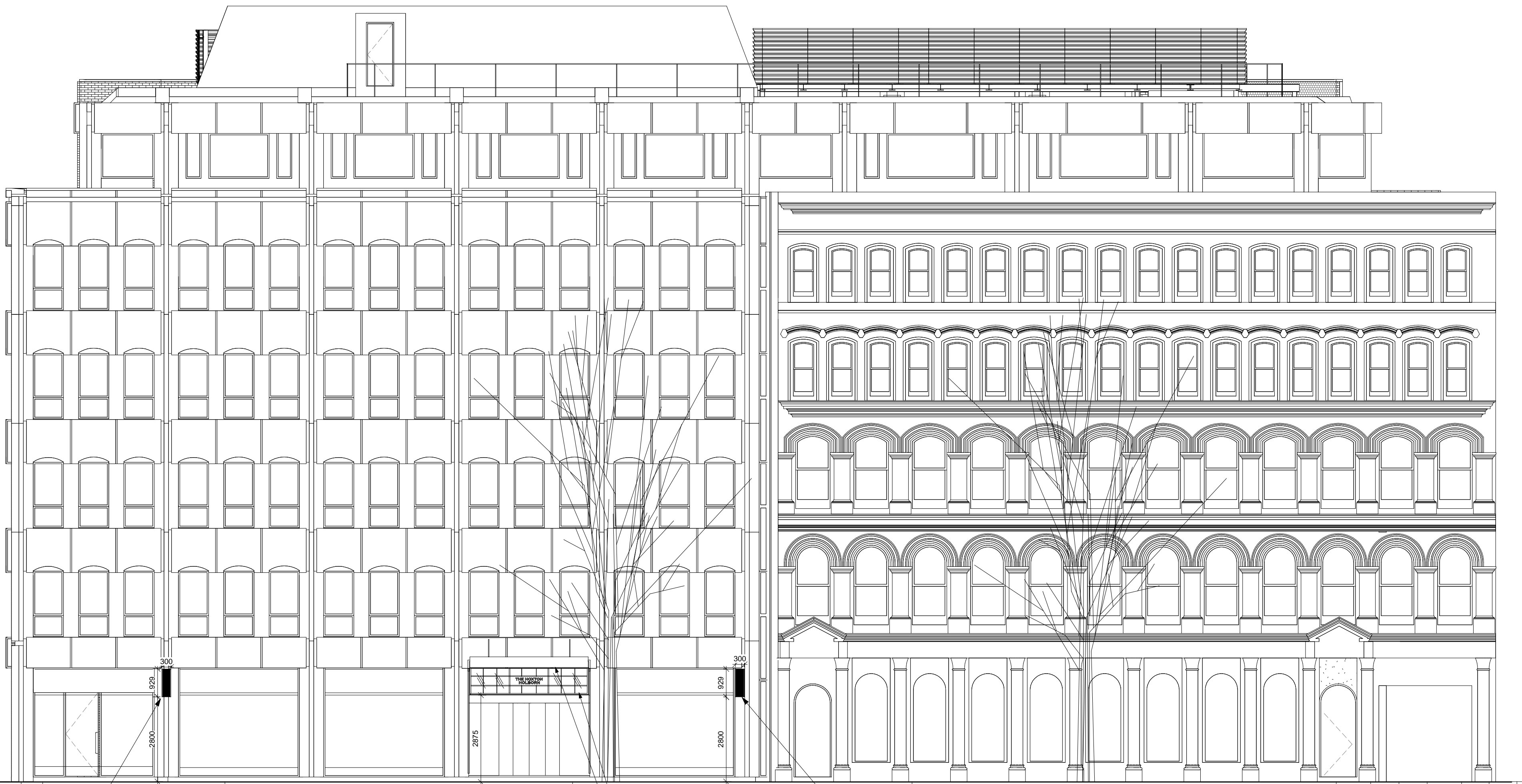
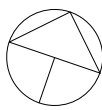
0mm 50mm 100mm

A1 Original Sheet Size

NORTH ELEVATION



SIGNAGE - NORTH ELEVATION - KEY PLAN  
1 : 500



08/07/2014	L	NBH	AB	Further Minor amendments for planning
25/06/2014	K	NBH	AB	Information added
16/06/2014	J	NBH	AB	Signage Updated
09/04/2014	I	NBH	AB	Annotation added according to planning consultants comments
08/04/2014	H	NBH	AB	Amended according to Planning Consultants comments
03/04/2014	G	NBH	AB	Amended according to Planning comments
26/03/2014	F	NBH	AB	Canopy amended
26/02/2014	E	NBH	AB	Information added
13/02/2014	D	NBH	AB	Minor amendments
10/02/2014	C	NBH	AB	Revised according to comments
27/01/2014	B	NH	AB	Shopfront Extension Added
10/12/2013	A	NH	AB	Revised According to IDs Comments

date	rev	name	chk	note
------	-----	------	-----	------

© Stride Treglown Limited 2012.

**Stride Treglown**

Architecture Town Planning Interior Design Building Surveying Landscape Design Graphic Design  
3 Cosser Street, London, SE1 7BU  
T 020 7401 0700 F 020 7401 0701 www.stridetreglown.co.uk

PROJECT  
HOXTON HOTEL HOLBORN  
199-206 HIGH HOLBORN  
LONDON WC1V 7BU

DRAWING TITLE  
SIGNAGE - GENERAL ARRANGEMENT -  
NORTH ELEVATION (PROPOSED)

STATUS  
PLANNING

SCALE	DATE	DRAWN BY	CHECKED BY
As indicated	04/12/2013	NH	AB

PROJECT NUMBER	DRAWING NUMBER	REVISION
20918	AP(00)9102	L

NORTH ELEVATION - SIGNAGE  
1 : 100

HIGH HOLBORN

C:\Revit Local\20918\_HH\_CONSTRUCTION\_2013\_Nik Hoggarth.rvt 08/07/2014 14:34:25