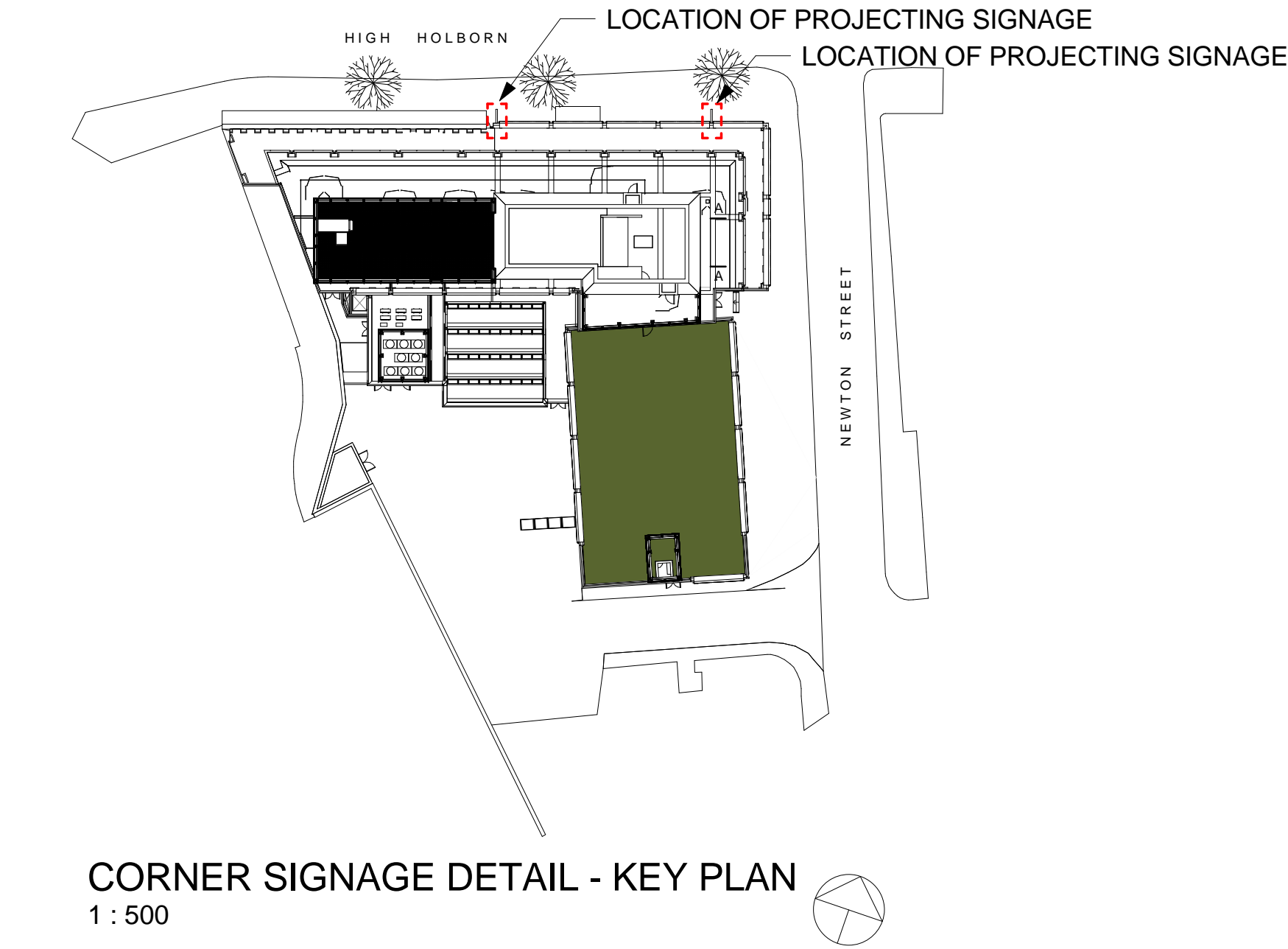
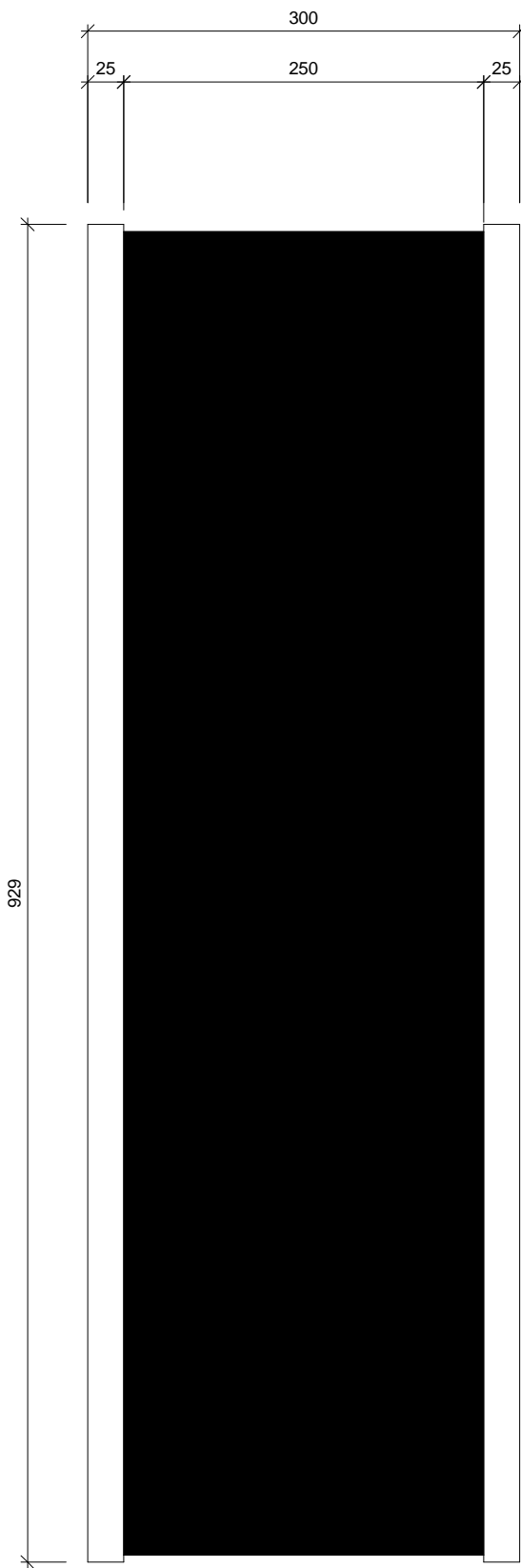
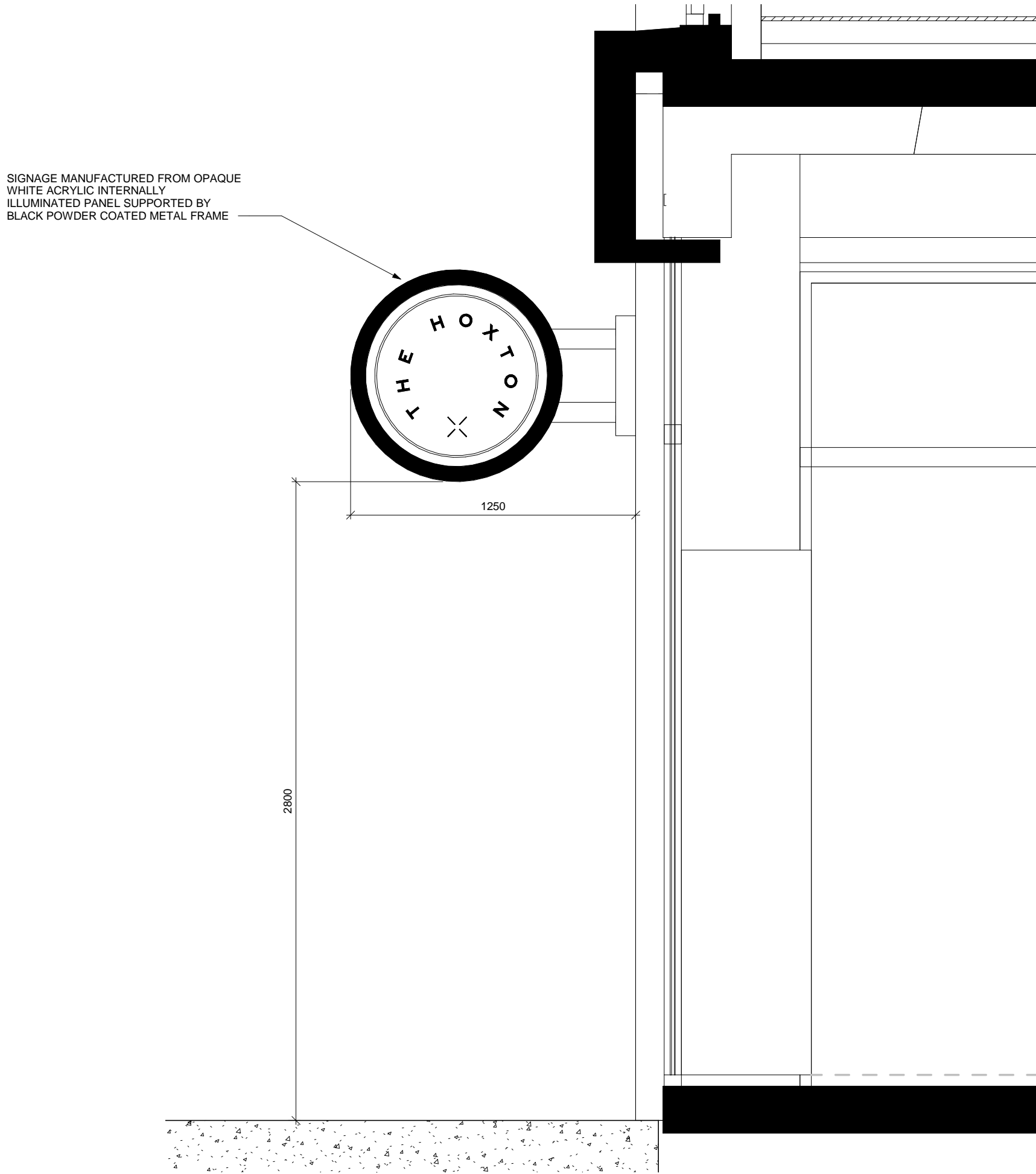


SIGNAGE DETAILING
1 : 5



CORNER SIGNAGE DETAIL - KEY PLAN
1 : 500



DETAIL SECTION A-A - SIGNAGE
1 : 20

Responsibility is not accepted for errors made by others in scaling from this drawing. All construction information should be taken from figured dimensions only.

0mm 50mm 100mm

A1 Original Sheet Size

08/07/2014	H	NBH	AB	Further Minor amendments for planning
25/06/2014	G	NBH	AB	Information added
16/06/2014	F	NBH	AB	Signage Updated
09/04/2014	E	NBH	AB	Annotation added according to planning consultants comments
08/04/2014	D	NBH	AB	Canopy details moved from AP(00)9100 to AP(00)9113
03/04/2014	C	NBH	AB	Amended according to Planning comments
26/03/2014	B	NBH	AB	Canopy amended
26/02/2014	A	NBH	AB	Information added

date	rev	name	chk	note
------	-----	------	-----	------

© Stride Treglown Limited 2012.

Stride Treglown

Architecture Town Planning Interior Design Building Surveying Landscape Design Graphic Design
3 Cosser Street, London, SE1 7BU
T 020 7401 0700 F 020 7401 0701 www.stridetreglown.co.uk

PROJECT
HOXTON HOTEL HOLBORN
199-206 HIGH HOLBORN
LONDON WC1V 7BU

DRAWING TITLE
SIGNAGE - DETAIL

STATUS
PLANNING

SCALE	DATE	DRAWN BY	CHECKED BY
As indicated	13/02/2014	NBH	AB
PROJECT NUMBER	DRAWING NUMBER	REVISION	
20918	AP(00)9100	H	

C:\Revl\Local20918_HH_CONSTRUCTION_2013_Nik.Hogarth.rvt 08/07/2014 14:36:34