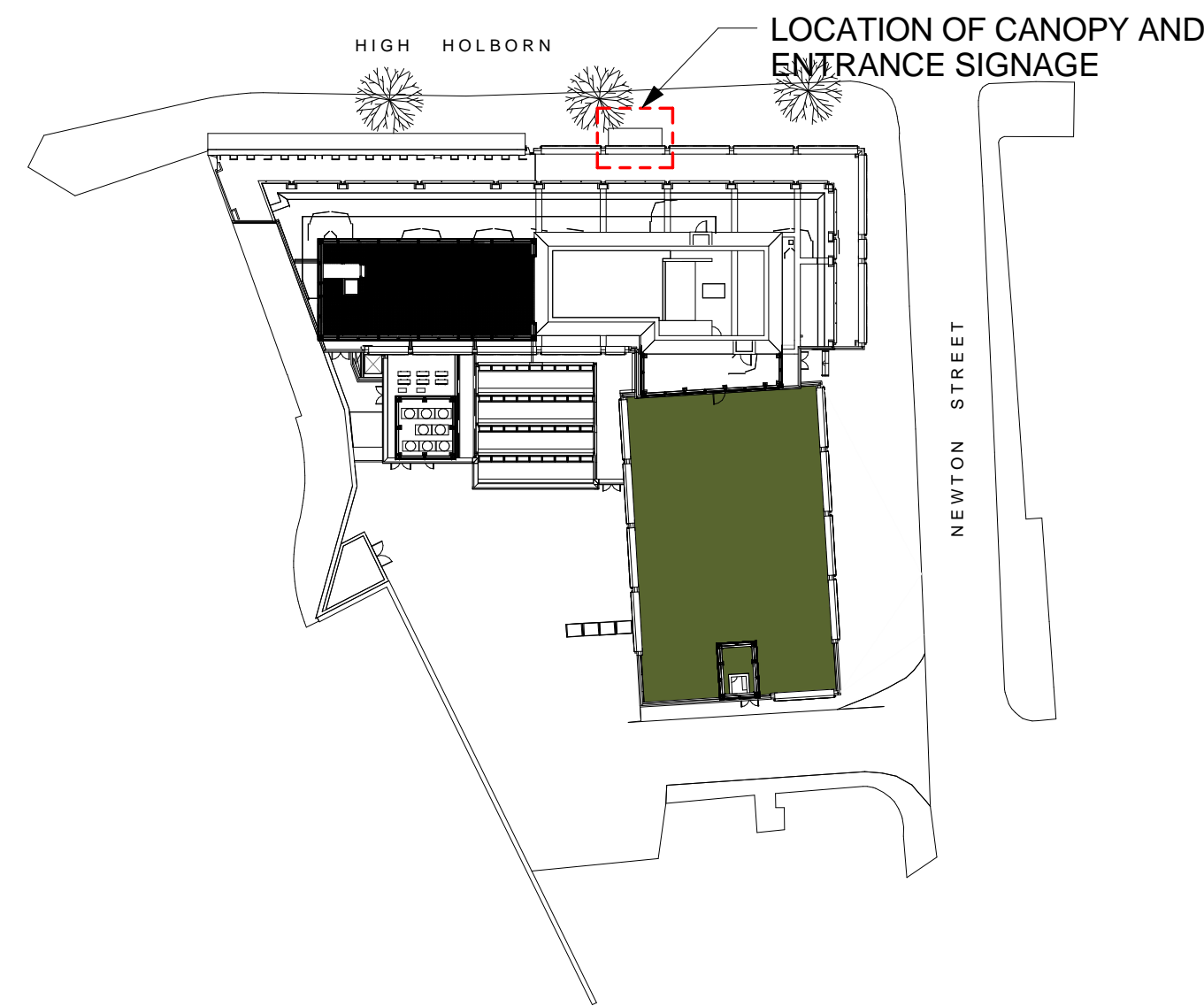
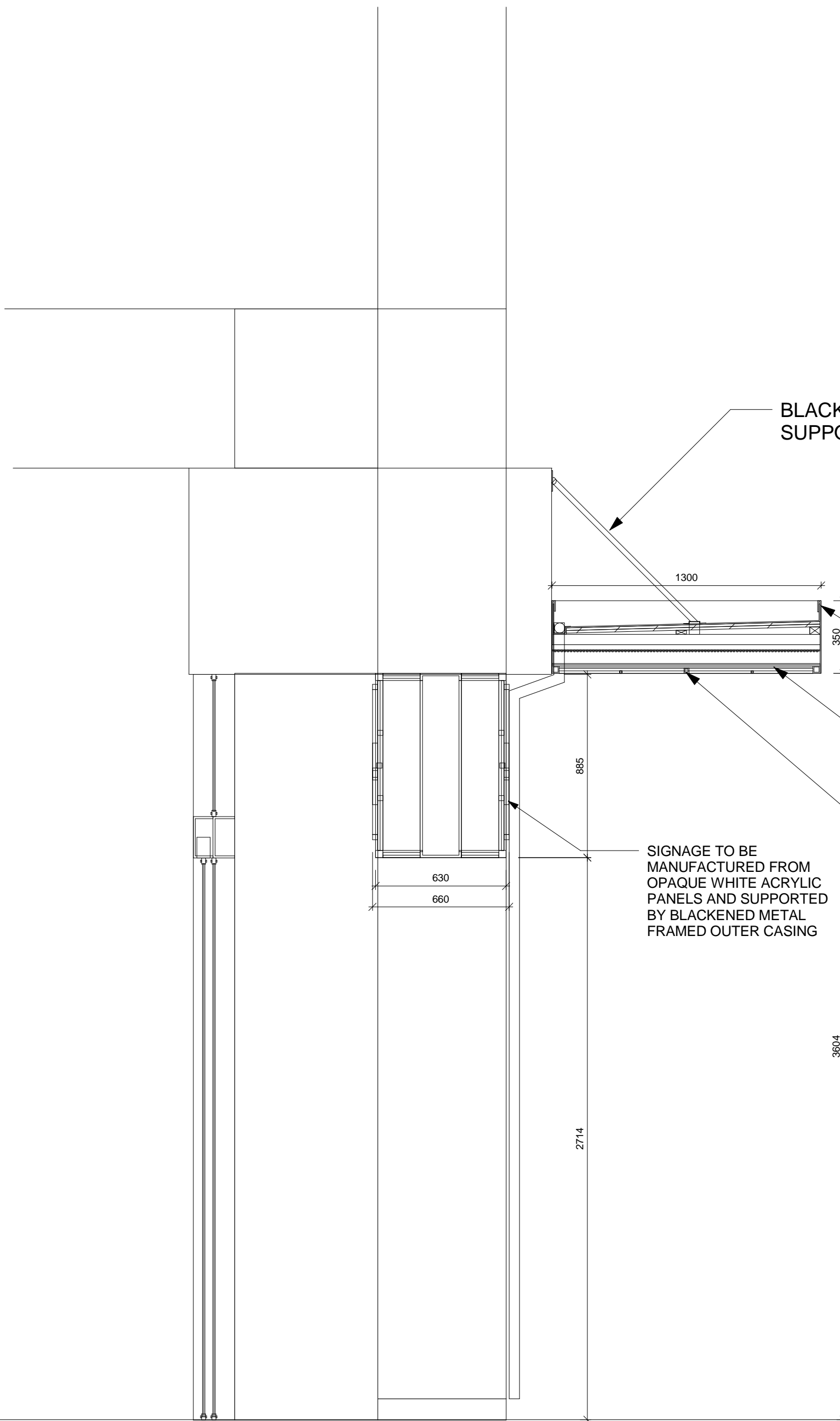


GROUND FLOOR PLAN - CANOPY  
1 : 100



CANOPY DETAIL - KEY PLAN  
1 : 500



CANOPY SECTION B-B  
1 : 20

HOXTON METAL BRANDED EMBLEM  
TO HOXTON SPECIFICATIONS

CANOPY FASCIA MANUFACTURED FROM  
BLACKENED METAL PANELS

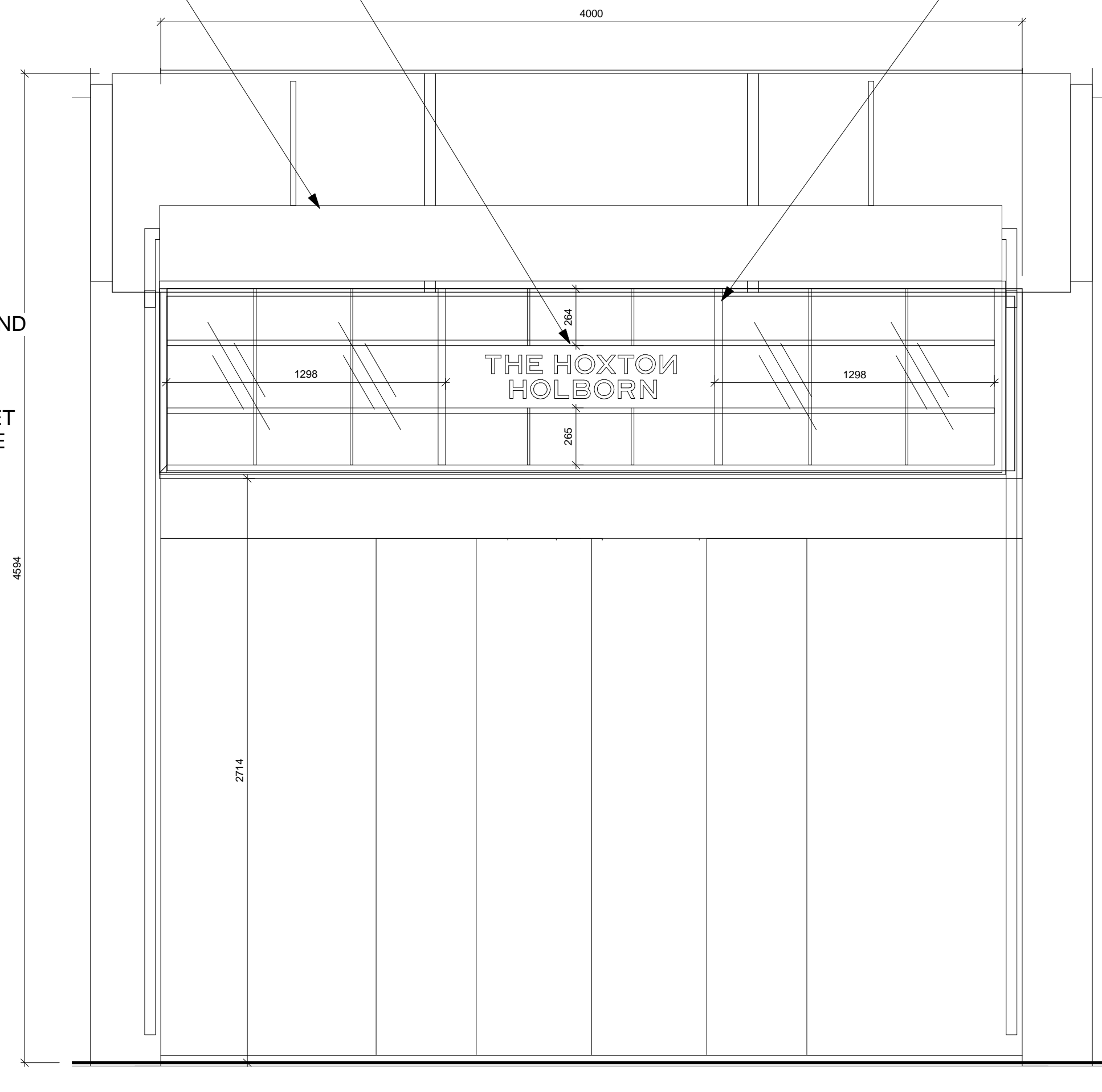
BLACKENED METAL ROD  
SUPPORT BRACKET FOR CANOPY

BLACKENED METAL  
FACING PANELS AROUND  
EDGES OF CANOPY

OPAQUE PLASTIC SHEET  
PANELS ON UNDERSIDE  
OF CANOPY

BLACKENED METAL  
GRID ON UNDERSIDE  
OF CANOPY TO  
MATCH GRID PATTERN  
AS SHOWN ON DETAIL  
NORTH ELEVATION -  
SIGNAGE

SIGNAGE TO BE  
MANUFACTURED FROM  
OPAQUE WHITE ACRYLIC  
PANELS AND SUPPORTED  
BY BLACKENED METAL  
FRAMED OUTER CASING



DETAIL NORTH ELEVATION - SIGNAGE  
1 : 20

Responsibility is not accepted for errors made by others in scaling from this drawing. All construction information should be taken from figured dimensions only.

0mm 50mm 100mm

A1 Original  
Sheet Size

09/07/2017	G	NBH	AB	Minor Amendment
01/07/2014	F	NBH	AB	Signage Amended
25/06/2014	E	NBH	AB	Information added
16/06/2014	D	NBH	AB	Signage Updated
14/04/2014	C	NBH	AB	Amendments according to planning consultants comments
09/04/2014	B	NBH	AB	Annotation added according to planning consultants comments
08/04/2014	A	NBH	AB	Canopy details moved from AP(00)9100 to AP(00)9113
date	rev	name	chk	note

© Stride Treglown Limited 2012.

**Stride Treglown**

Architecture Town Planning Interior Design Building Surveying Landscape Design Graphic Design  
3 Cosser Street, London, SE1 7BU  
T 020 7401 0700 F 020 7401 0701 www.stridetreglown.co.uk

PROJECT  
HOXTON HOTEL HOLBORN  
199-206 HIGH HOLBORN  
LONDON WC1V 7BU

DRAWING TITLE  
SIGNAGE - CANOPY DETAIL

STATUS  
PLANNING

SCALE DATE DRAWN BY CHECKED BY  
As indicated 07/04/2014 NBH AB

PROJECT NUMBER DRAWING NUMBER REVISION  
20918 AP(00)9113 G

C:\Revl Local\20918\_HH\_CONSTRUCTION\_2013\_Nik Hoggarth.rvt 09/07/2014 16:31:16